

TENT HILL No.1

Composite Logs

| | |
|--------------------------|------------------------------|
| Company | PANCONTINENTAL PETROLEUM LTD |
| Well Name | TENT HILL No.1 |
| Field | WILDCAT |
| Township | ALICE SPRINGS |
| Country | AUSTRALIA |
| State | NORTHERN TERRITORY |
| Continent | AUSTRALIA |
| Field Location | 195KM WEST OF ALICE SPRINGS |
| Latitude | 024 13' 45.000" S DMS |
| Longitude | 132 02' 30.000" E DMS |
| Perm. Datum | GL |
| Elevation Perm. Datum | 577.30 M |
| Elevation KB (wrt EPD) | 577.30 M |
| Elevation DF (wrt EPD) | 577.30 M |
| Elevation GL (wrt EPD) | 575.00 M |
| Elev. Log Zero (wrt EPD) | 2.30 M |
| Log measured from | KB |
| Drill measured from | KB |
| Basin | AMADEUS |
| Rig Release Date | 28-08-1983 |
| Date Plotted | Wednesday, 7 October 2009 |
| Time Plotted | 2:57:36 PM |

Run Information

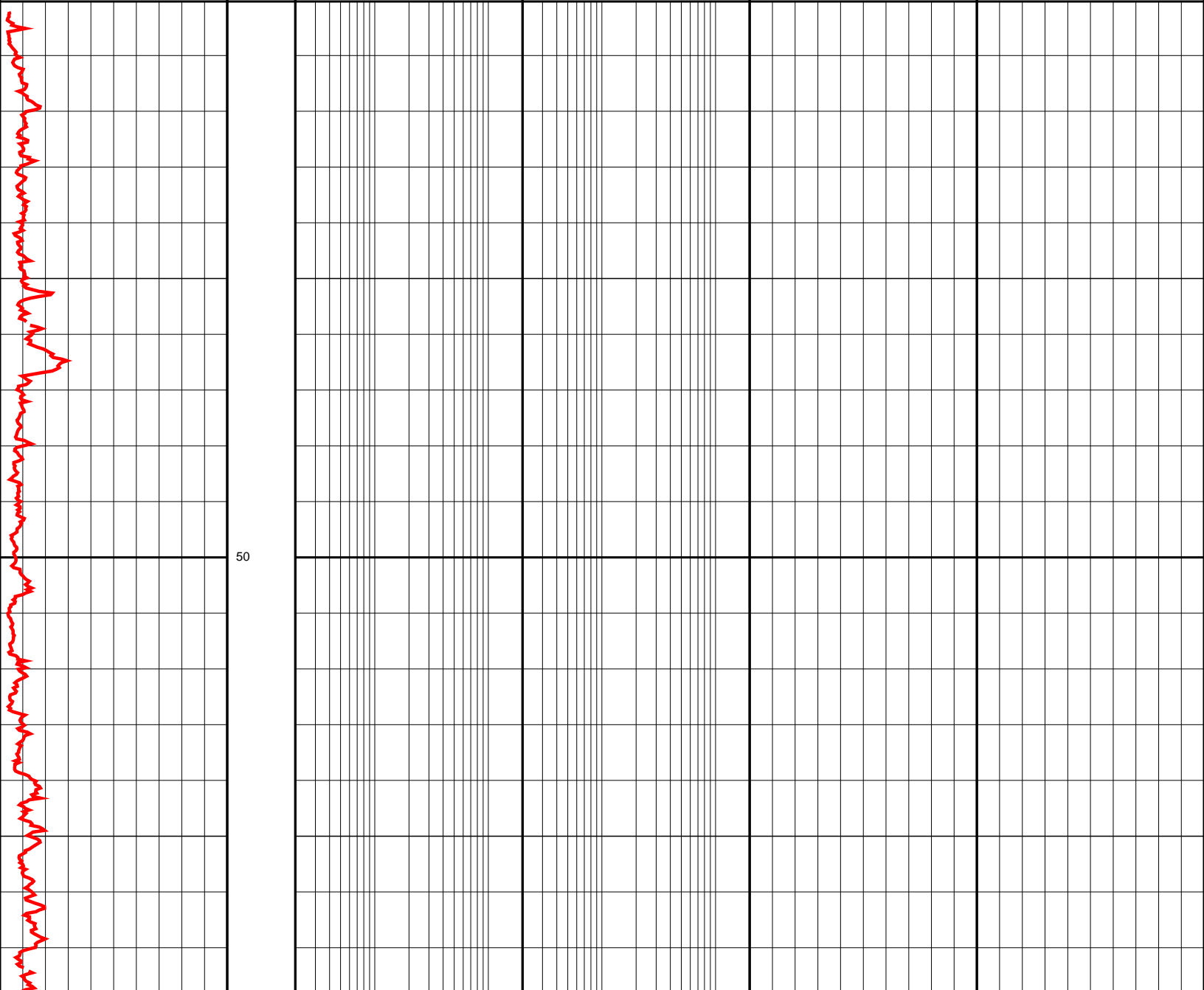
| | | | | | |
|---------------------|--------------------|--|--|--|--|
| Bottom log interval | 1386.84 M | | | | |
| Recorded by | G. HIGGING, A. BAT | | | | |
| Witness | J. HEUGH, G. K WHI | | | | |
| | | | | | |

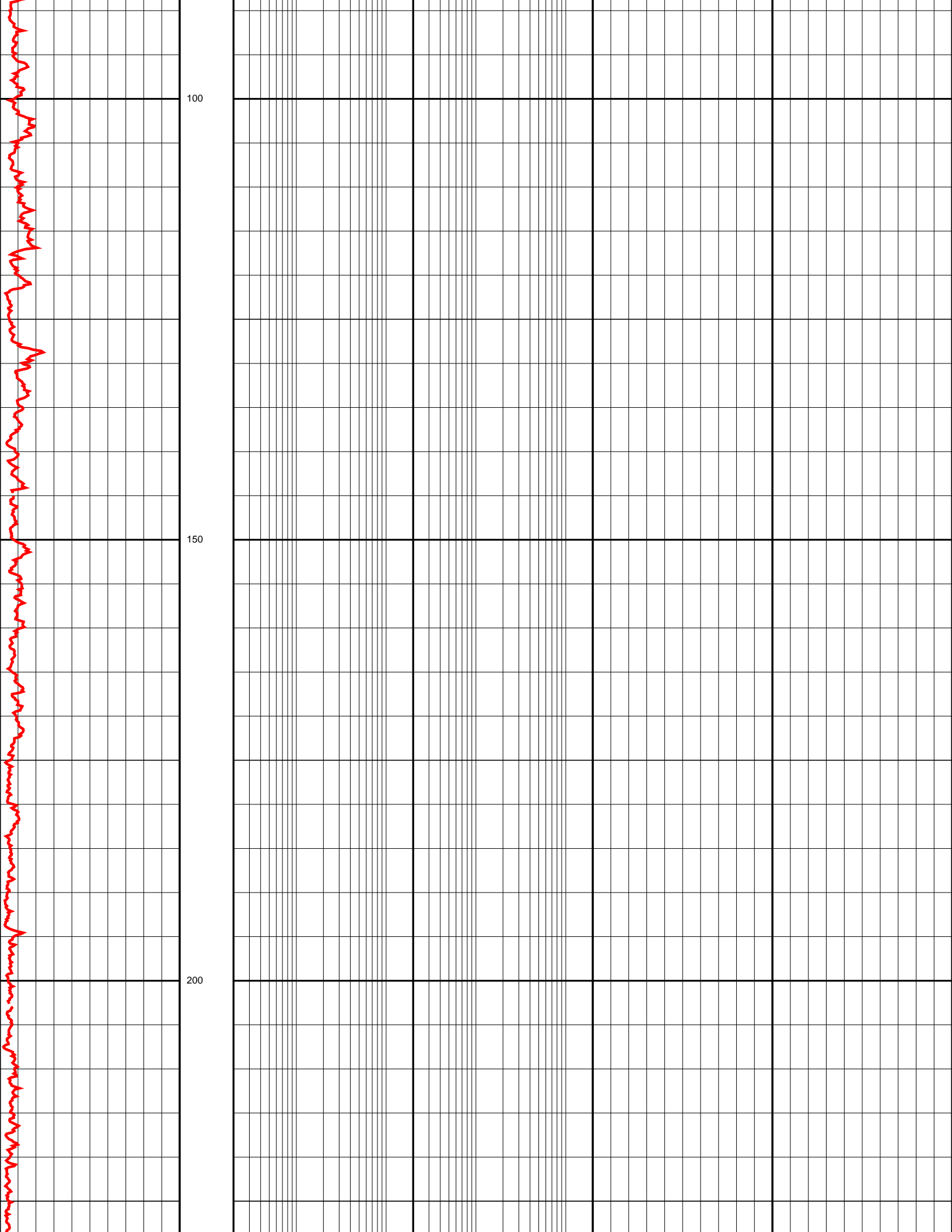
Since well log interpretations are opinions based upon inferences from well logs, we cannot and do not guarantee the correctness or accuracy of any interpretation. Therefore we shall not be liable or responsible for any loss, damage, cost or expense incurred or sustained by anyone resulting from any interpretation.

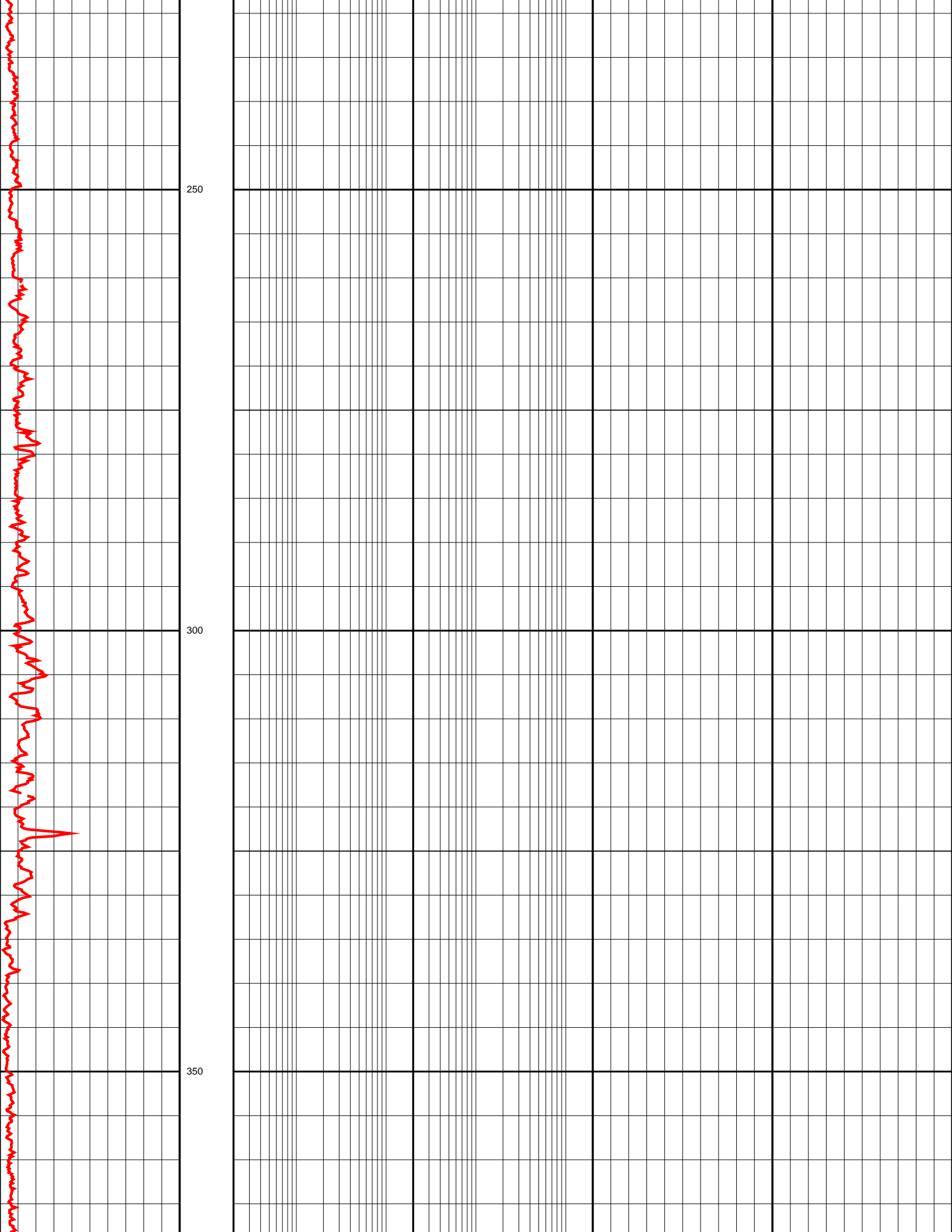
Log Description

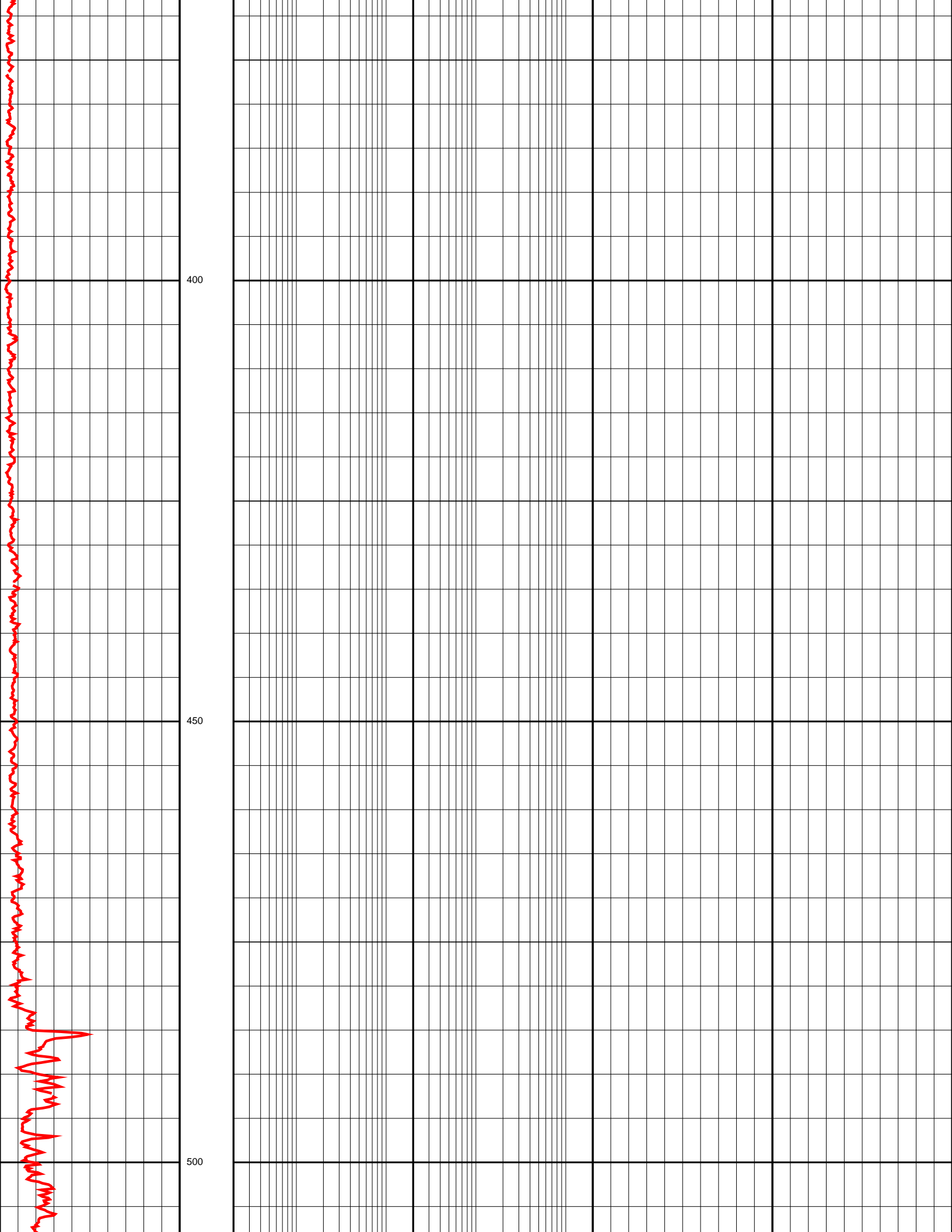
- GR Gamma Ray
- CALI Caliper
- SP Spontaneous Potential Log
- LLS Shallow Laterolog
- RHOB Compensated Formation Density
- NPHI Neutron Porosity
- DT Delta T Compressional
- BS Bit Size

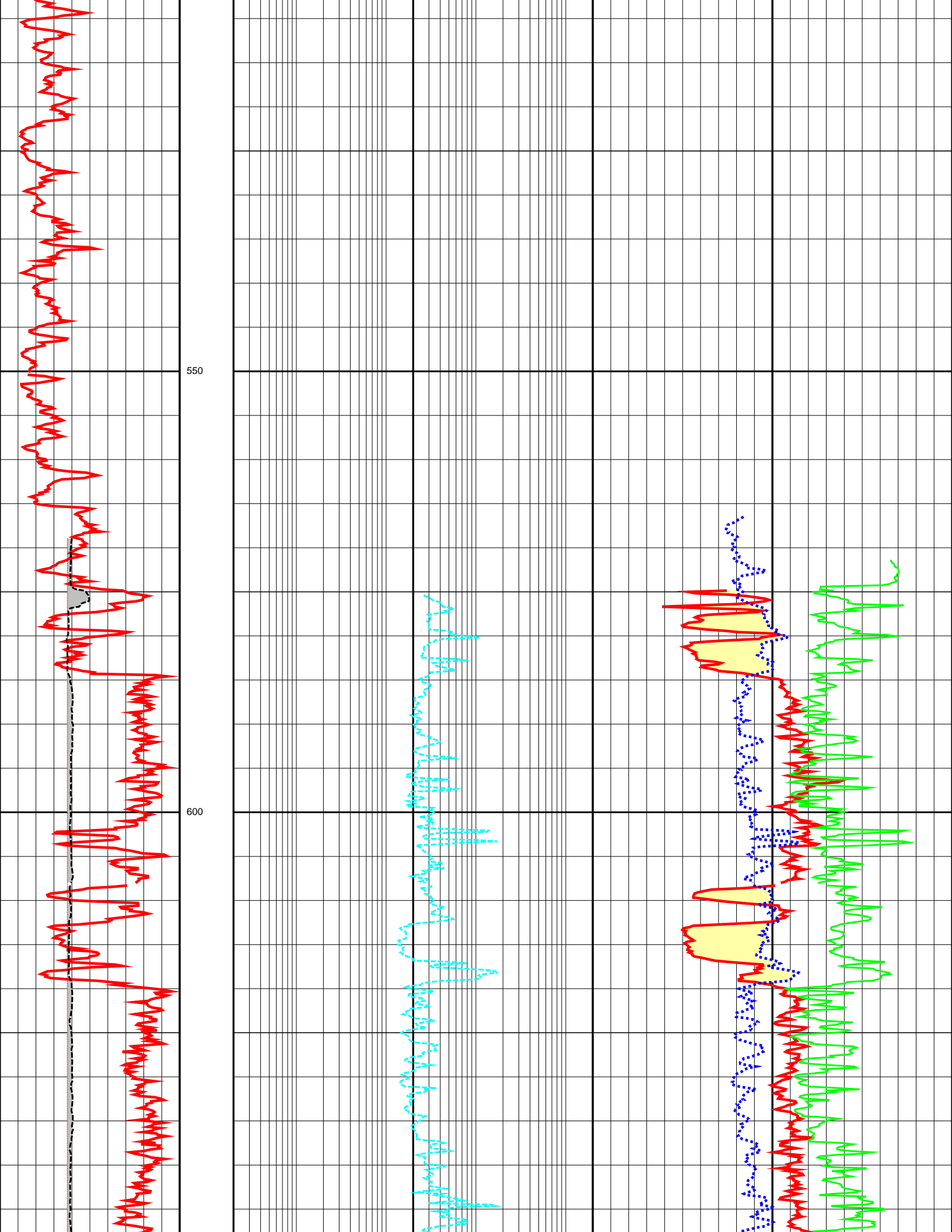
| | | | | | | | | | |
|-------|-------------|-------|-------|-----|------------|--------|-------|-------------|-------|
| 0.0 | GR (API) | 250.0 | DEPTH | 0.2 | LLS (OHMM) | 2000.0 | 1.95 | RHOB (G/C3) | 2.95 |
| 0.0 | CALI (INCH) | 16.0 | M | | | | 0.45 | NPHI (V/V) | -0.15 |
| -80.0 | SP (MV) | 20.0 | 1:500 | | | | 140.0 | DT (US/F) | 40.0 |
| 0.0 | BS (INCH) | 16.0 | | | | | | | |

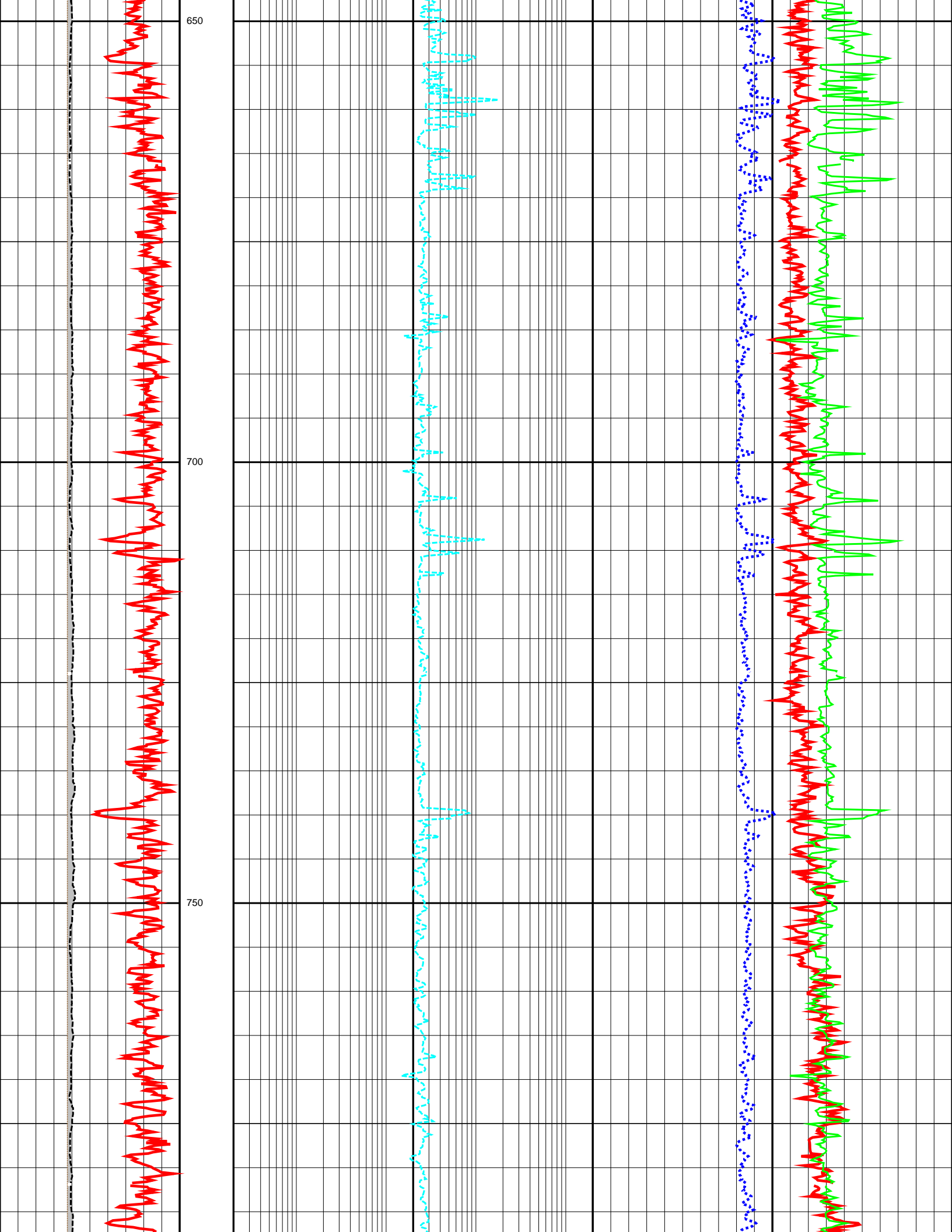


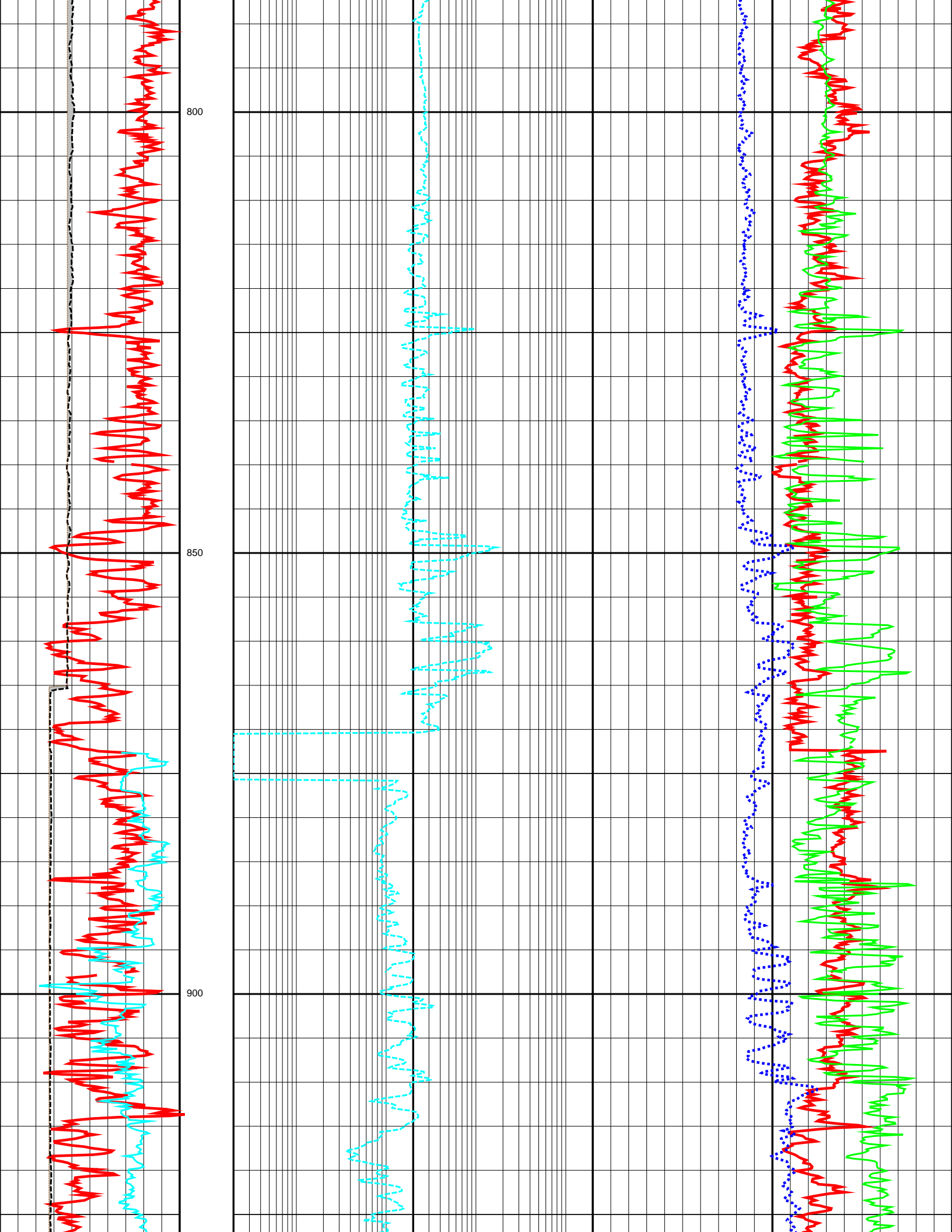


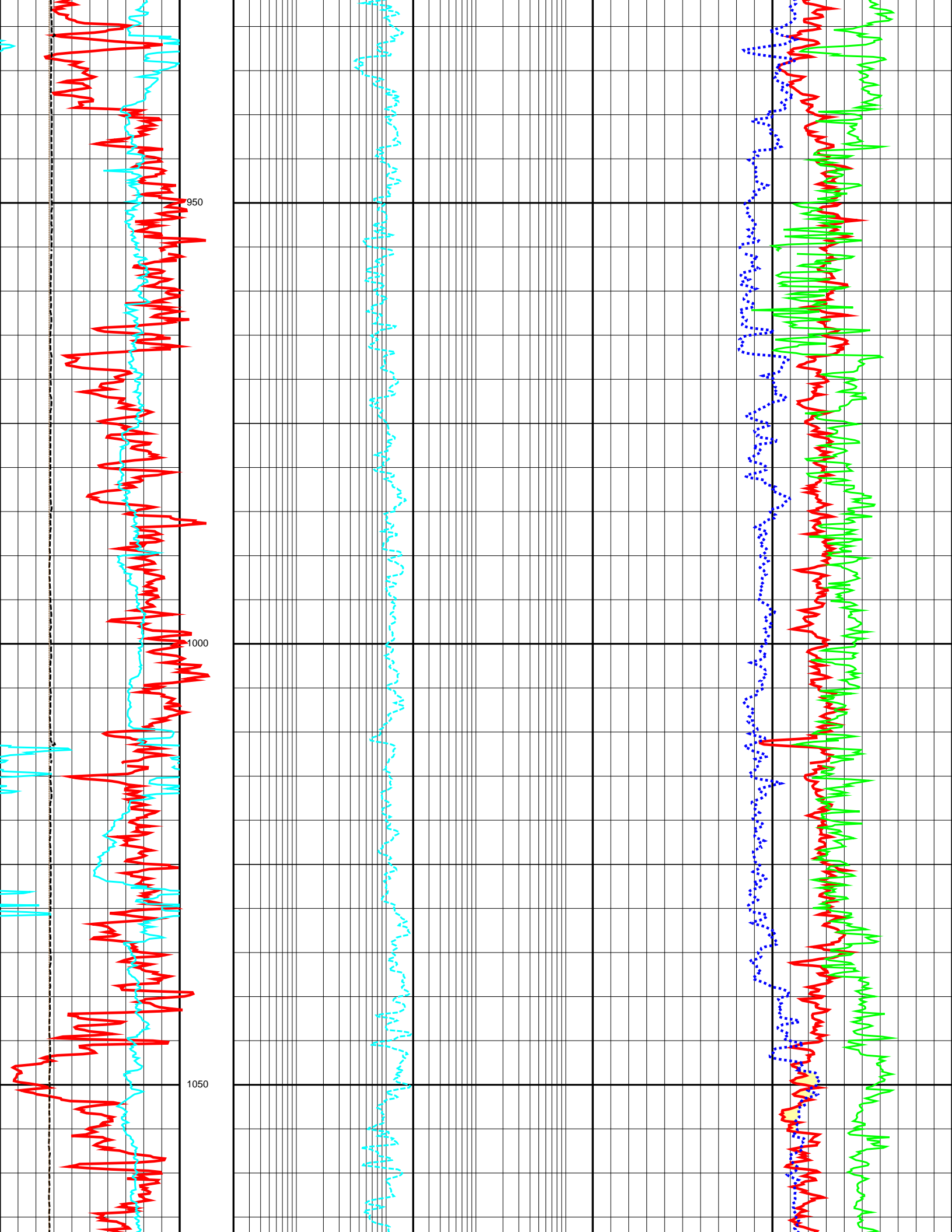


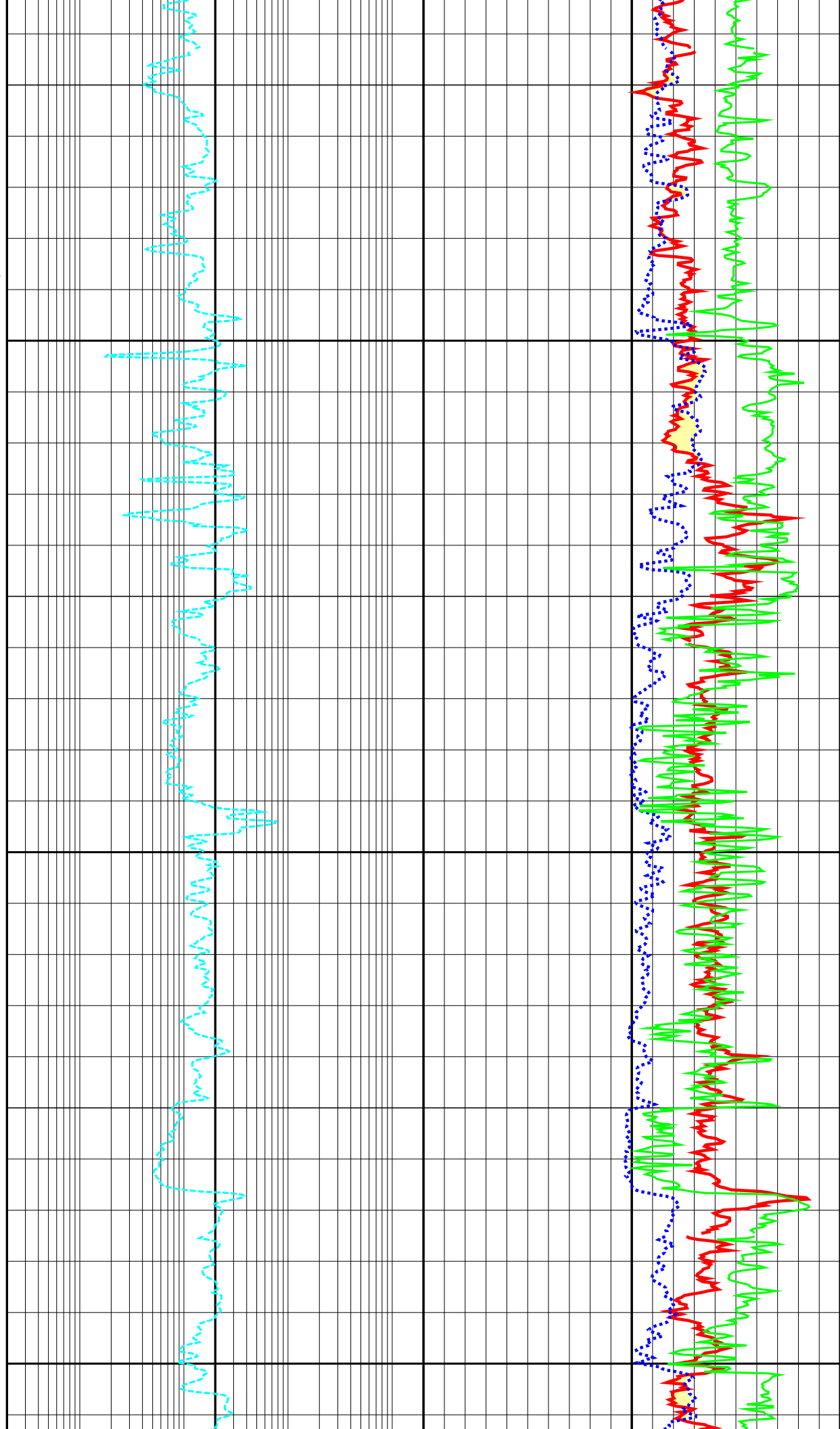
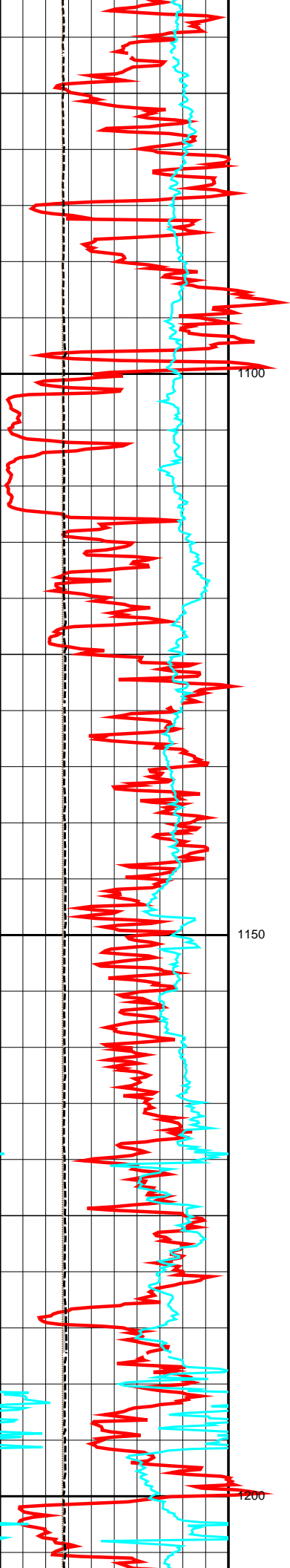


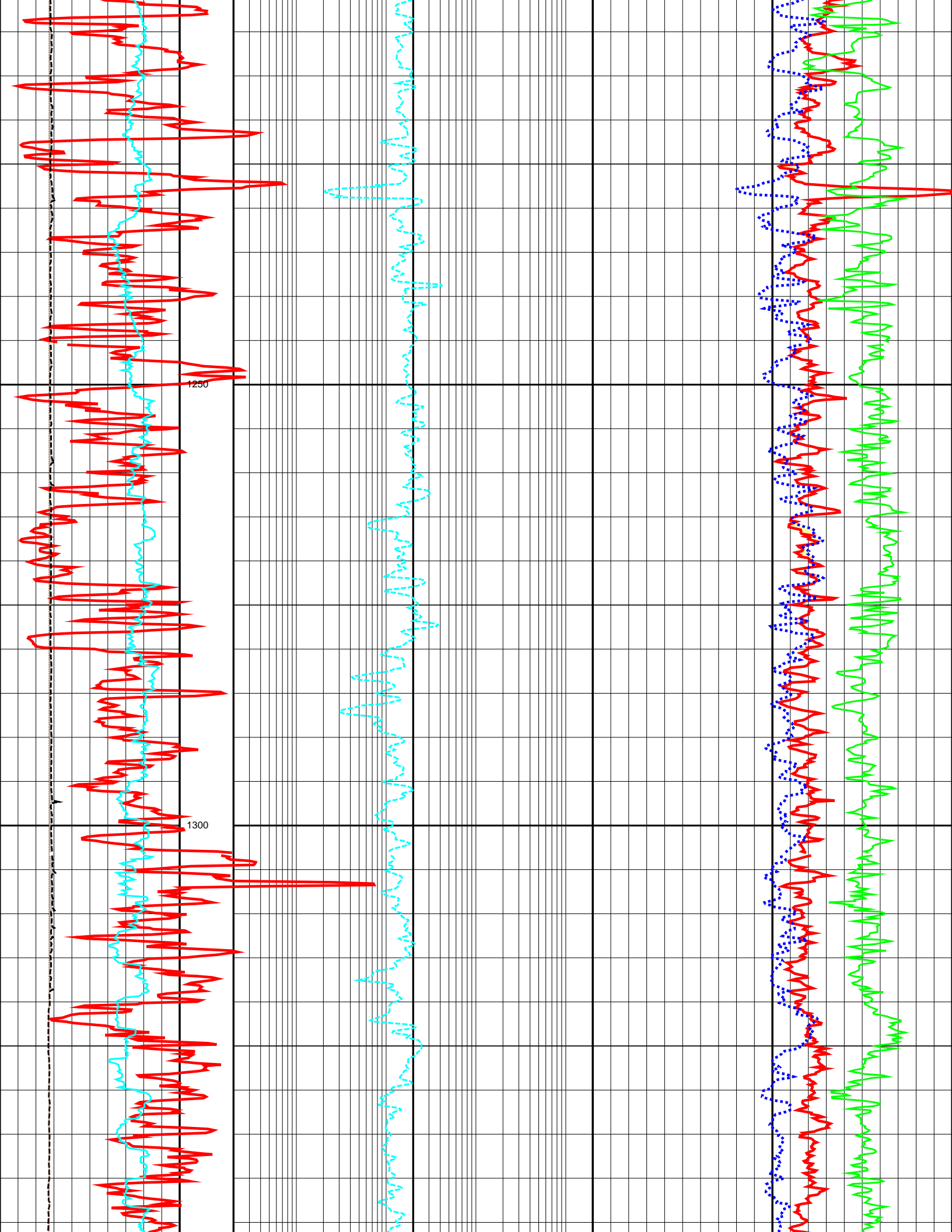


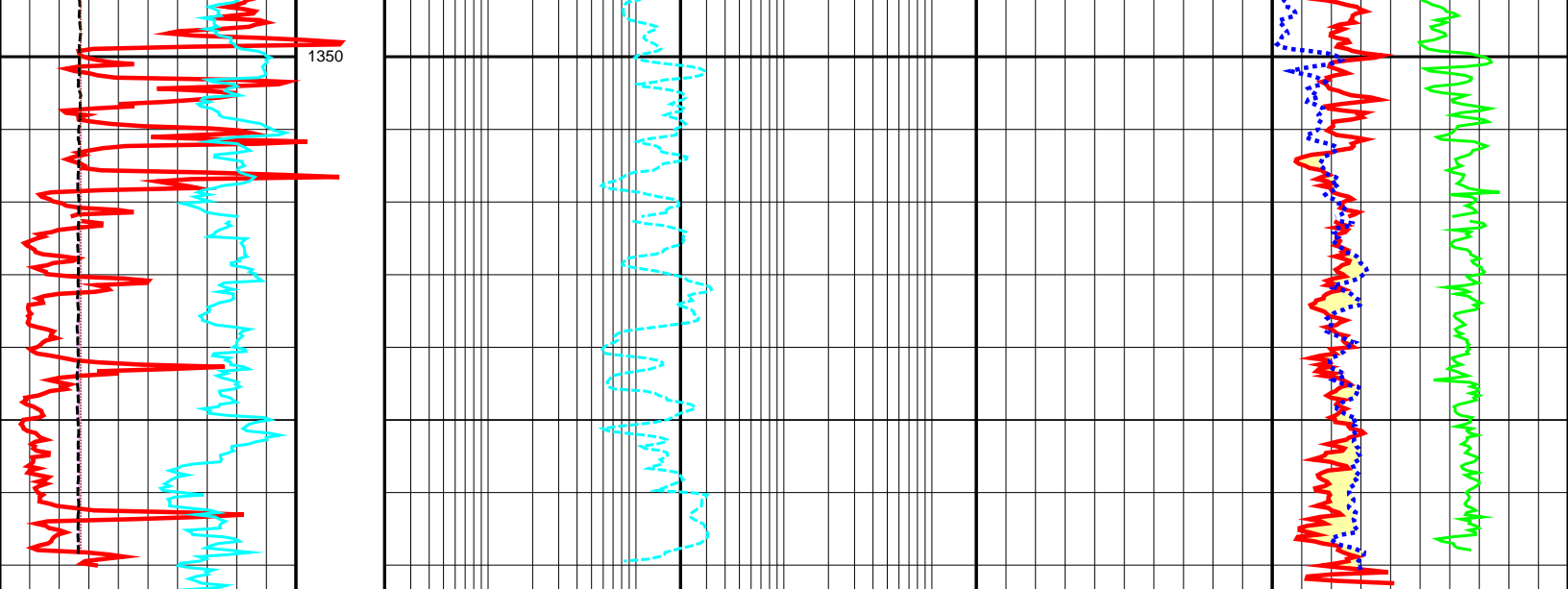












| | | | | | | | | | |
|-------|-------------|-------|-------|-----|------------|--------|-------|-------------|-------|
| 0.0 | GR (API) | 250.0 | DEPTH | 0.2 | LLS (OHMM) | 2000.0 | 1.95 | RHOB (G/C3) | 2.95 |
| 0.0 | CALI (INCH) | 16.0 | M | | | | 0.45 | NPHI (V/V) | -0.15 |
| -80.0 | SP (MV) | 20.0 | 1:500 | | | | 140.0 | DT (US/F) | 40.0 |
| 0.0 | BS (INCH) | 16.0 | | | | | | | |