

Undandita - 1A

Composite Logs

Company	PANCONTINENTAL PETROLEUM LIMITED
Well Name	UNDANDITA-1A
Field	UNDANDITA
Nation	AUSTRALIA
State	NORTHERN TERRITORY
Latitude	041 55' 58.300" S DMS
Longitude	023 42' 47.700" E DMS
Perm. Datum	GL
Elevation Perm. Datum	544.30 M
Elevation KB (wrt EPD)	761.50 M
Elevation GL (wrt EPD)	759.00 M
Elev. Log Zero (wrt EPD)	761.50 M
Basin	AMADEUS
Rig Release Date	01-02-1983
Date Plotted	Monday, 5 October 2009
Time Plotted	2:12:54 PM

Run Information

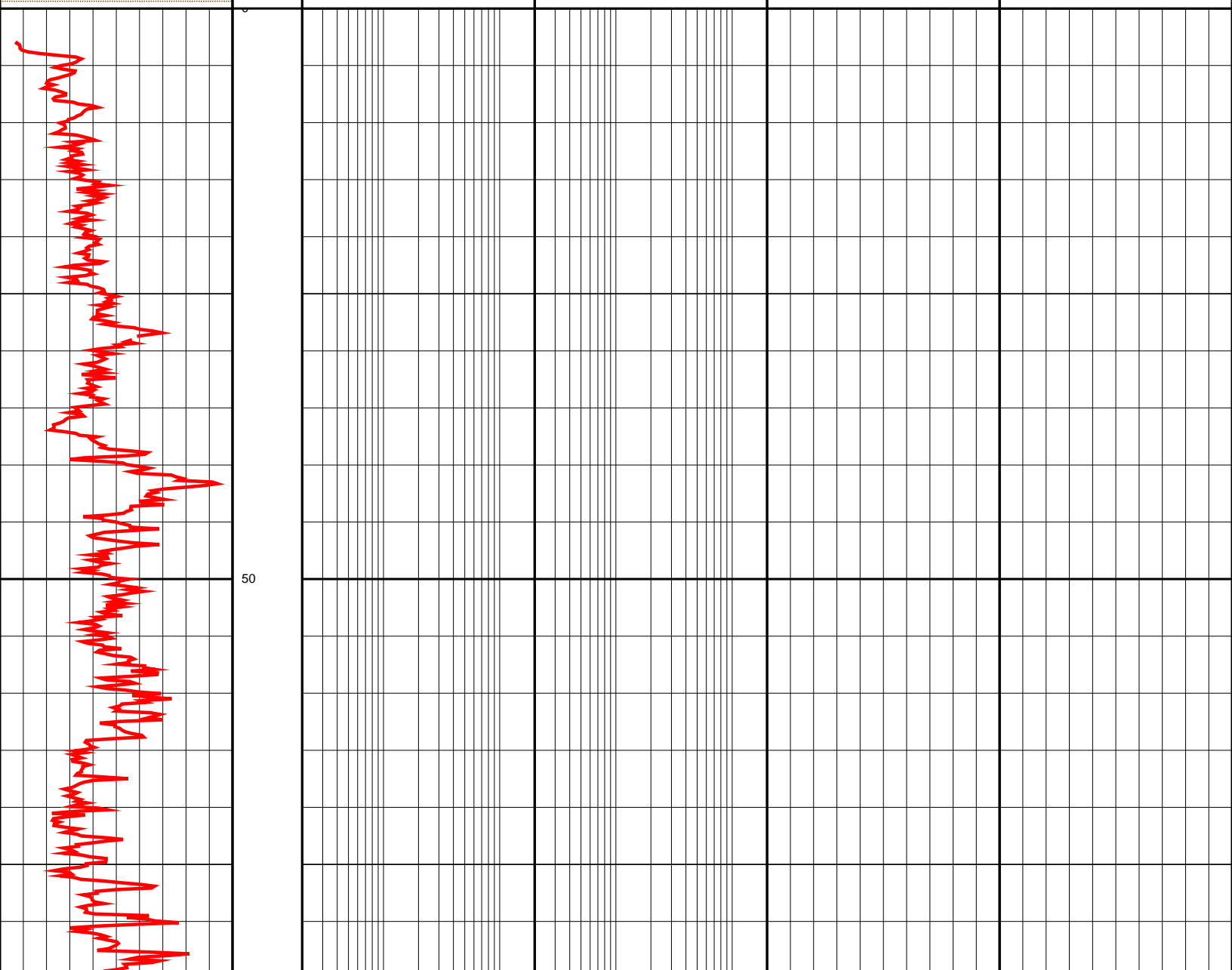
Run number	1				
Log date	17-12-1982				
Depth-Driller	1201.25 M				
Depth-Logger	1199.69 M				
Bottom log interval	1199.69 M				
Top log interval	0.00 M				
Bit Size	4.200 INCH				
Logging unit Loc	V326/33				
Recorded by	D. MYLREA, W. PEN				
Witness	R. LA RUE				

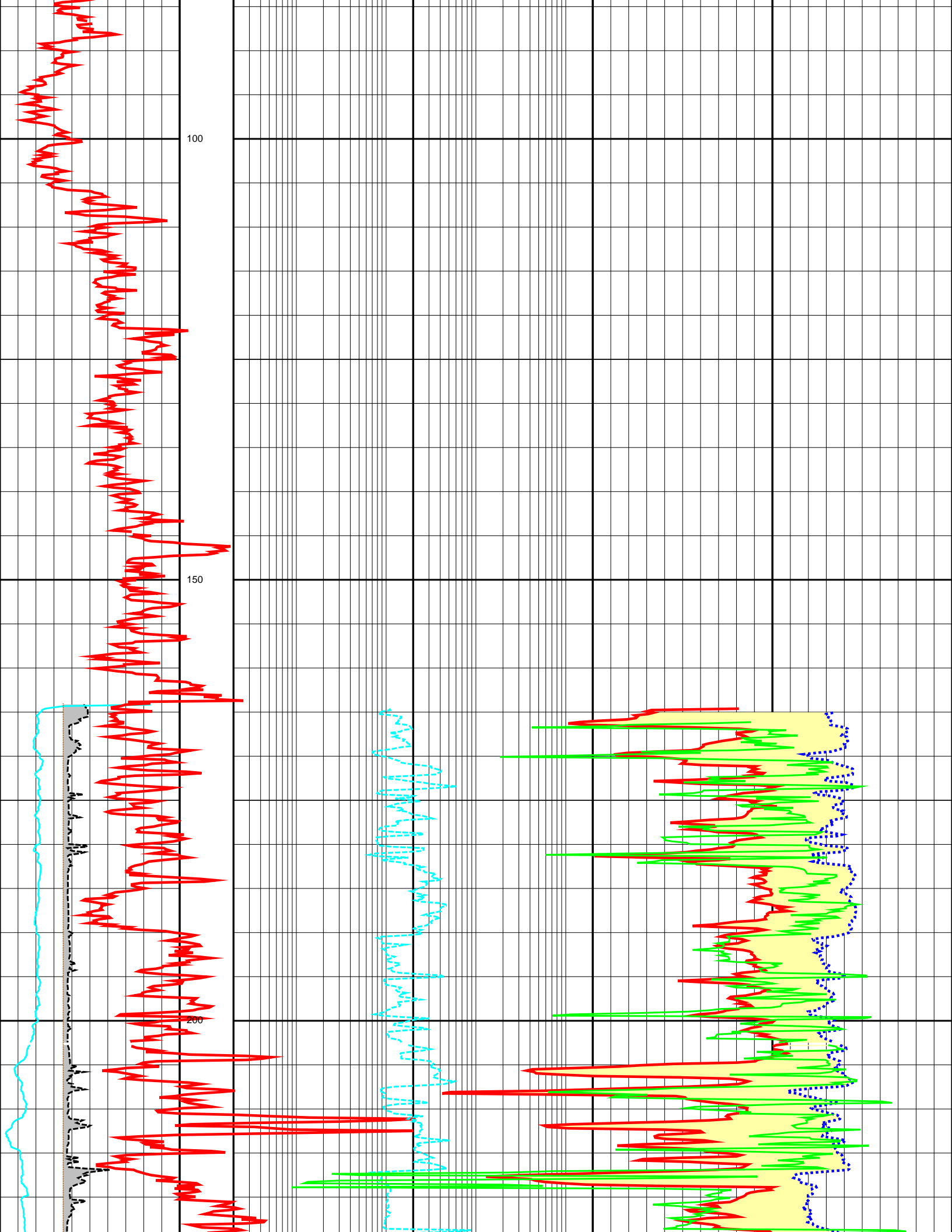
Since well log interpretations are opinions based upon inferences from well logs, we cannot and do not guarantee the correctness or accuracy of any interpretation. Therefore we shall not be liable or responsible for any loss, damage, cost or expense incurred or sustained by anyone resulting from any interpretation.

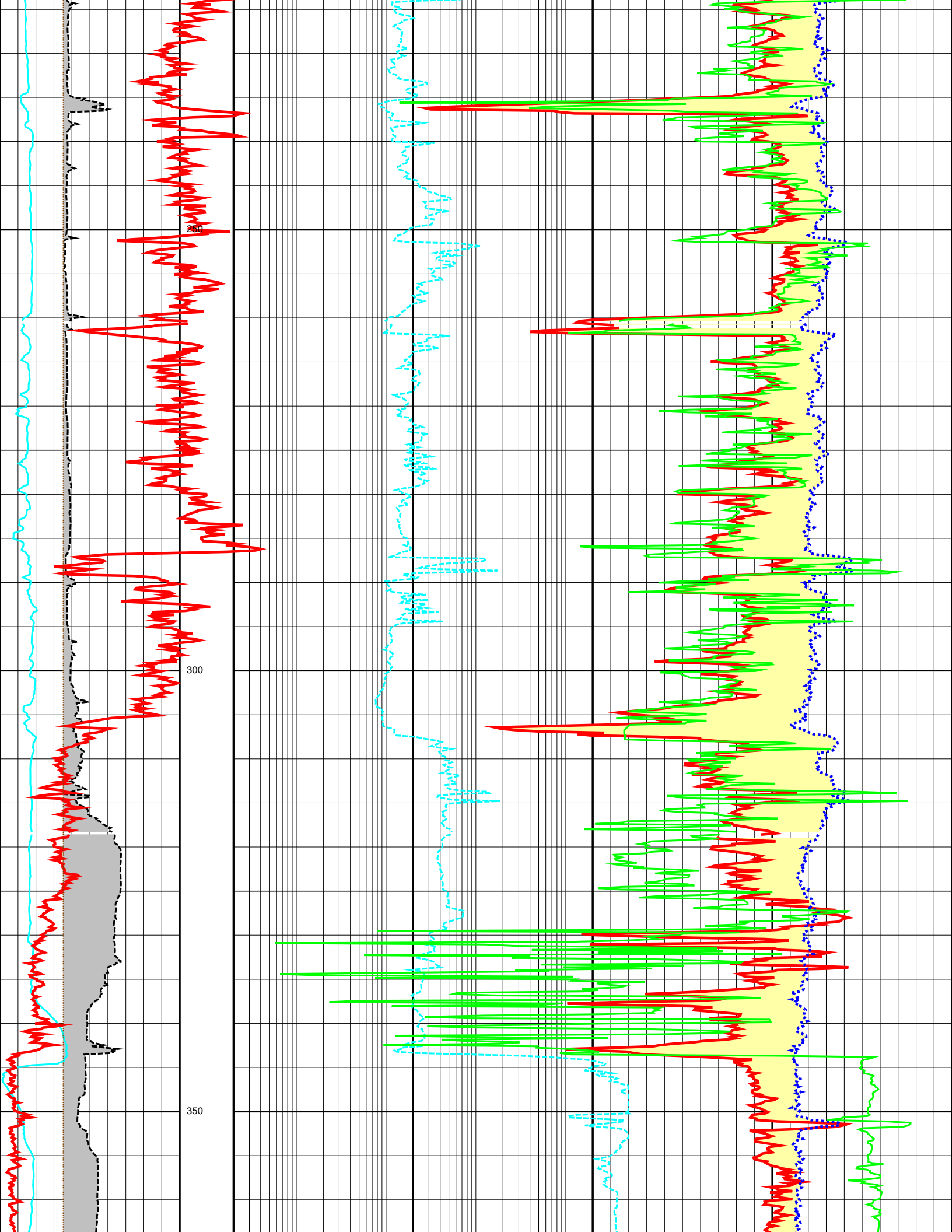
Log Description

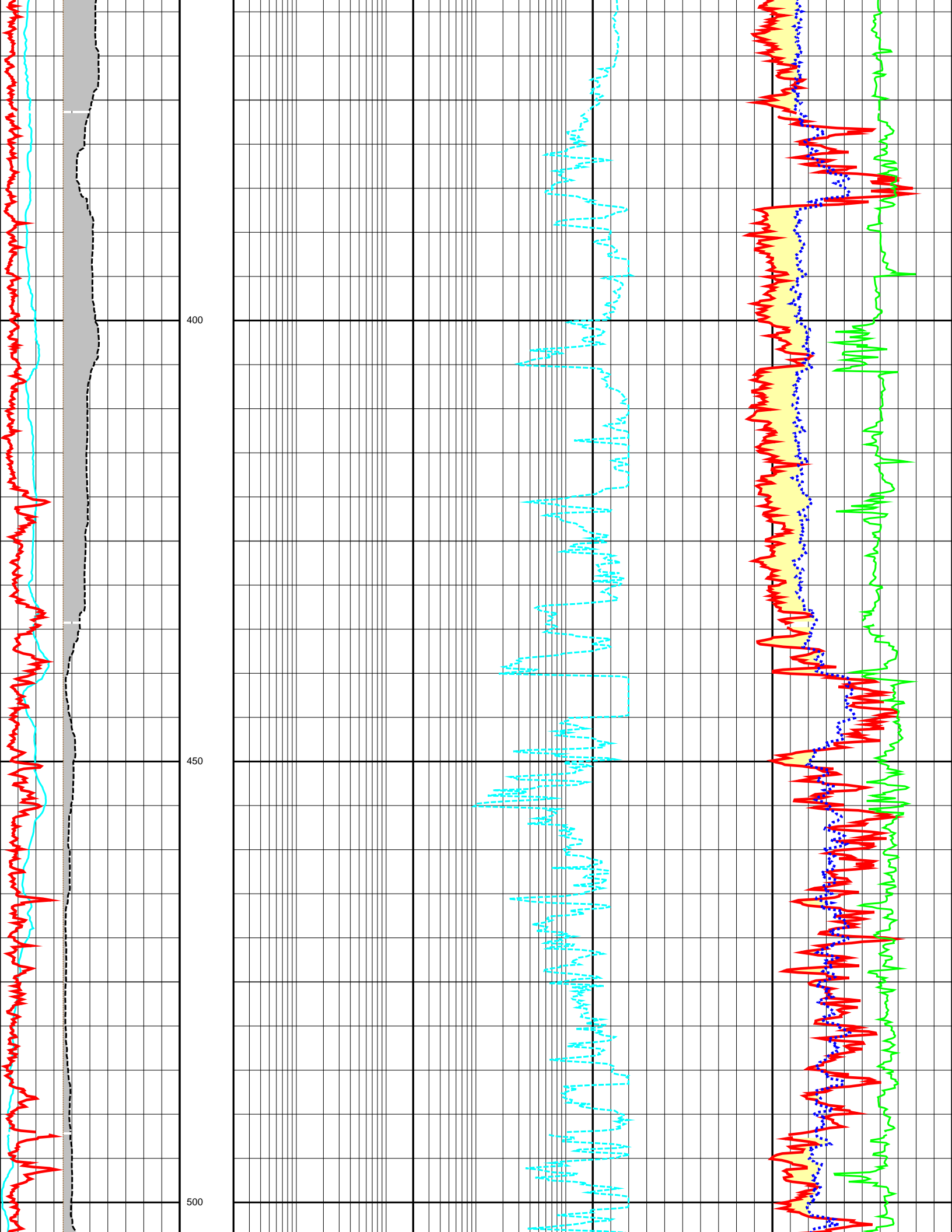
CALI	Caliper
SP	Spontaneous Potential Log
GR	Gamma Ray
LLS	Shallow Laterolog
RHOB	Compensated Formation Density
NPHI	Neutron (Converted from API Counts)
DT	Delta T Compressional
BS	Bit Size

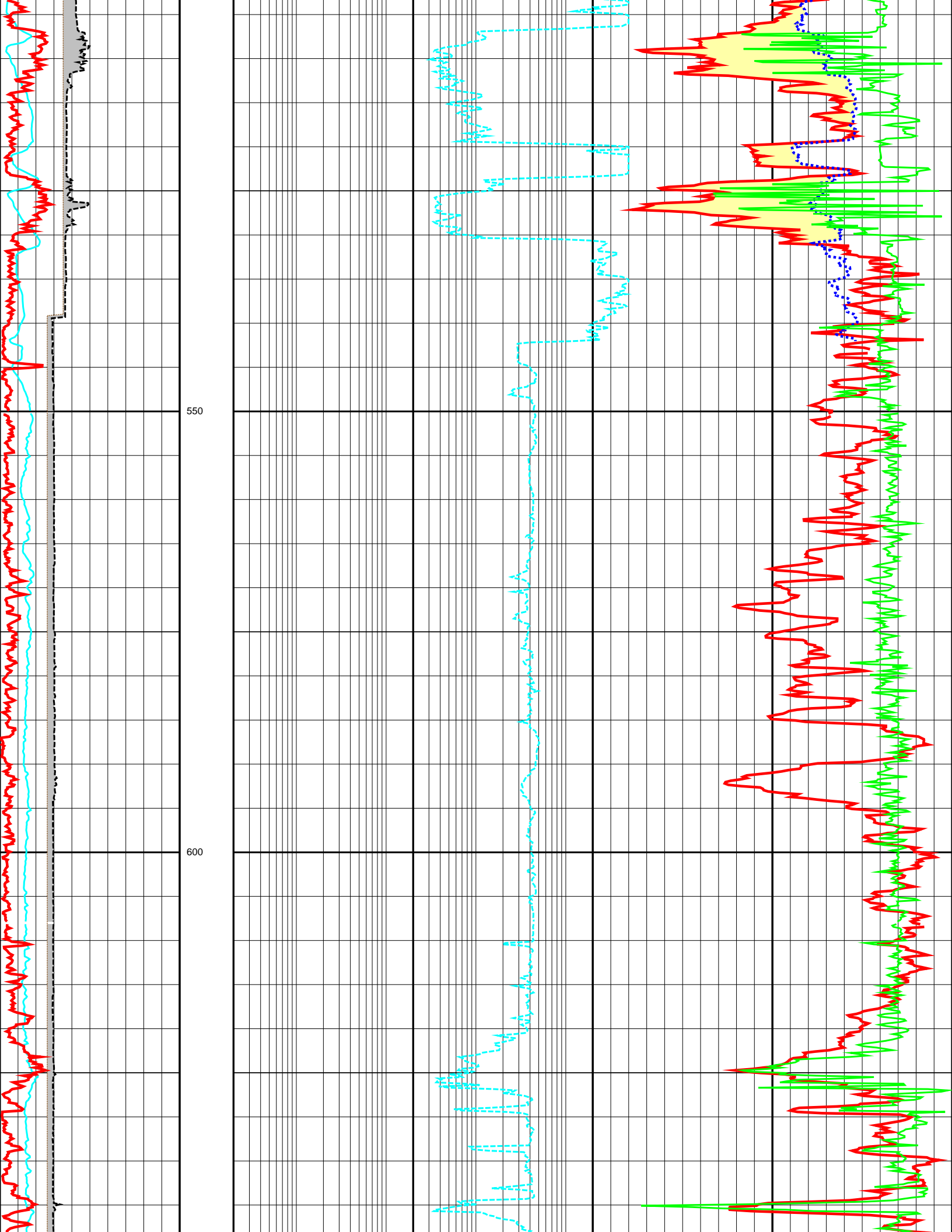
0.0	CALI (INCH)	16.0	DEPTH	0.2	LLS (OHMM)	2000.0	1.95	RHOB (G/C3)	2.95
-50.0	SP (MV)	250.0	M						
			1:500						
0.0	GR (API)	200.0					0.45	NPHI (V/V)	-0.15
							140.0	DT (US/F)	40.0
0.0	BS (INCH)	16.0							

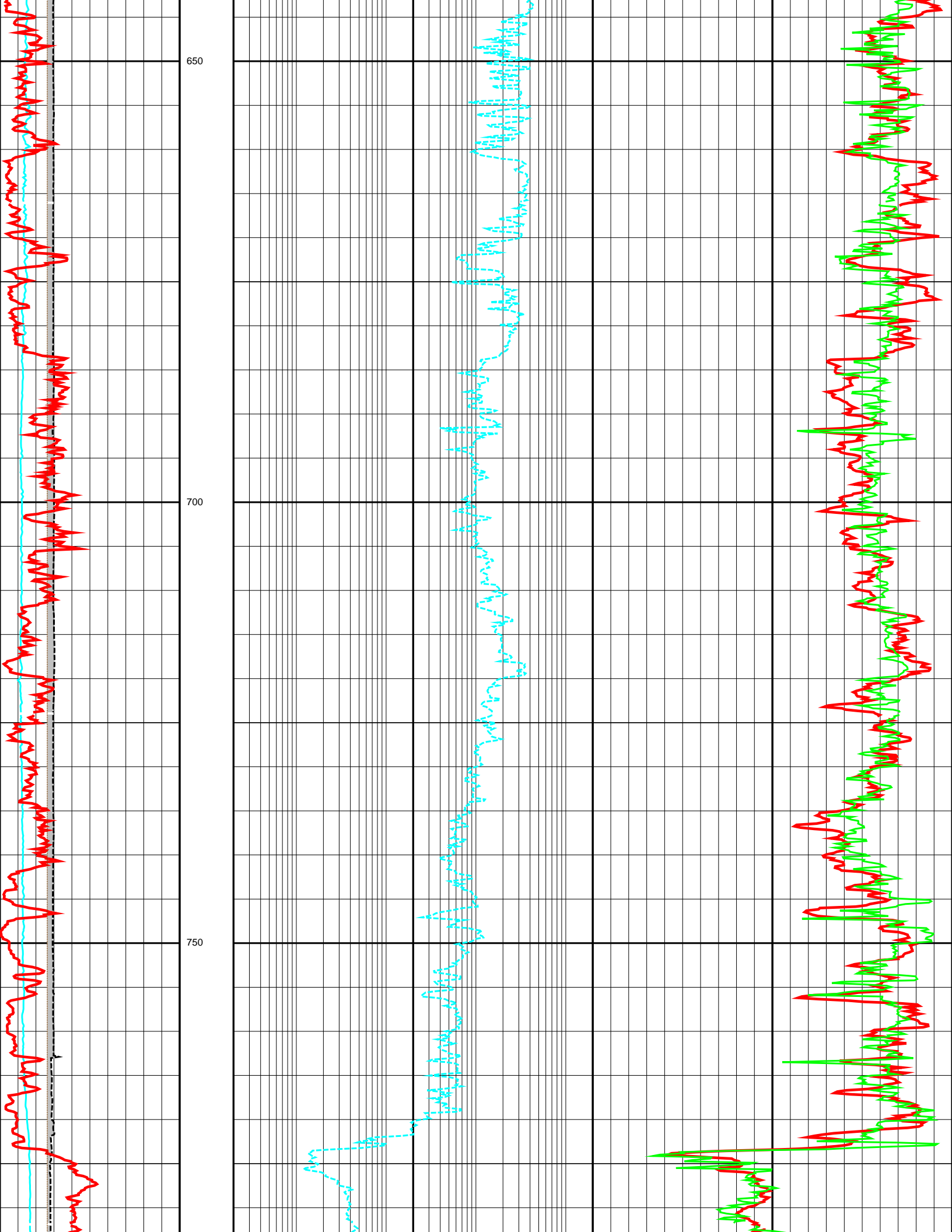


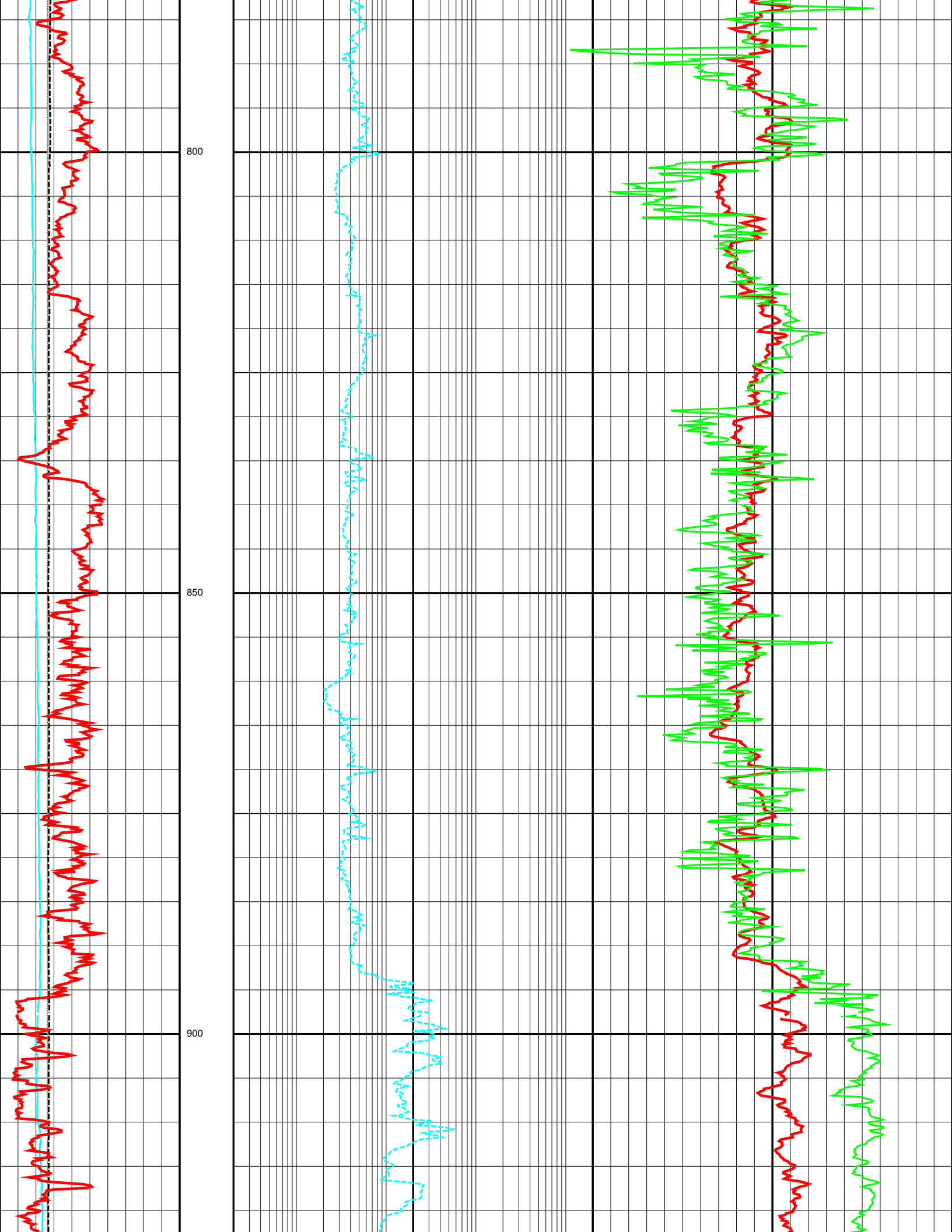


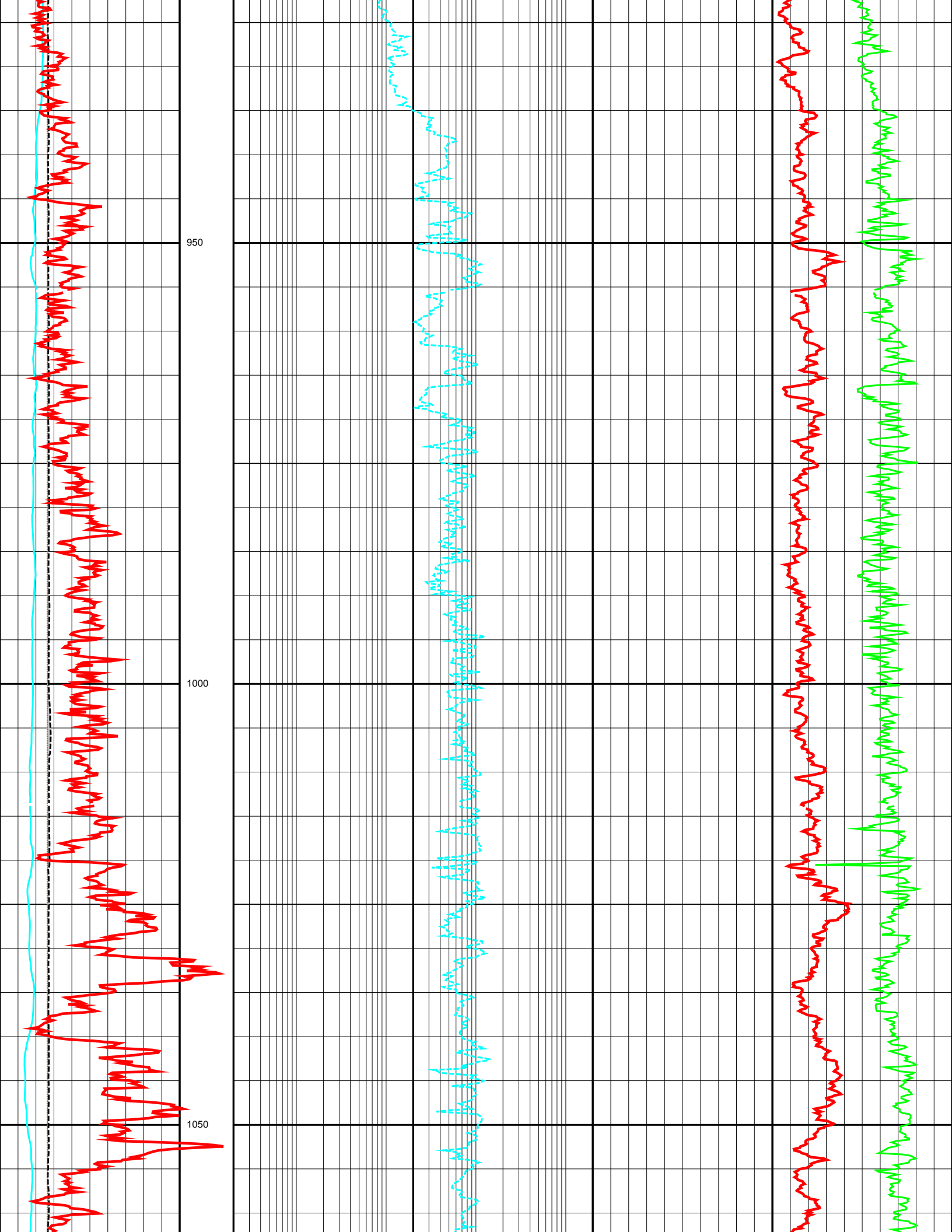


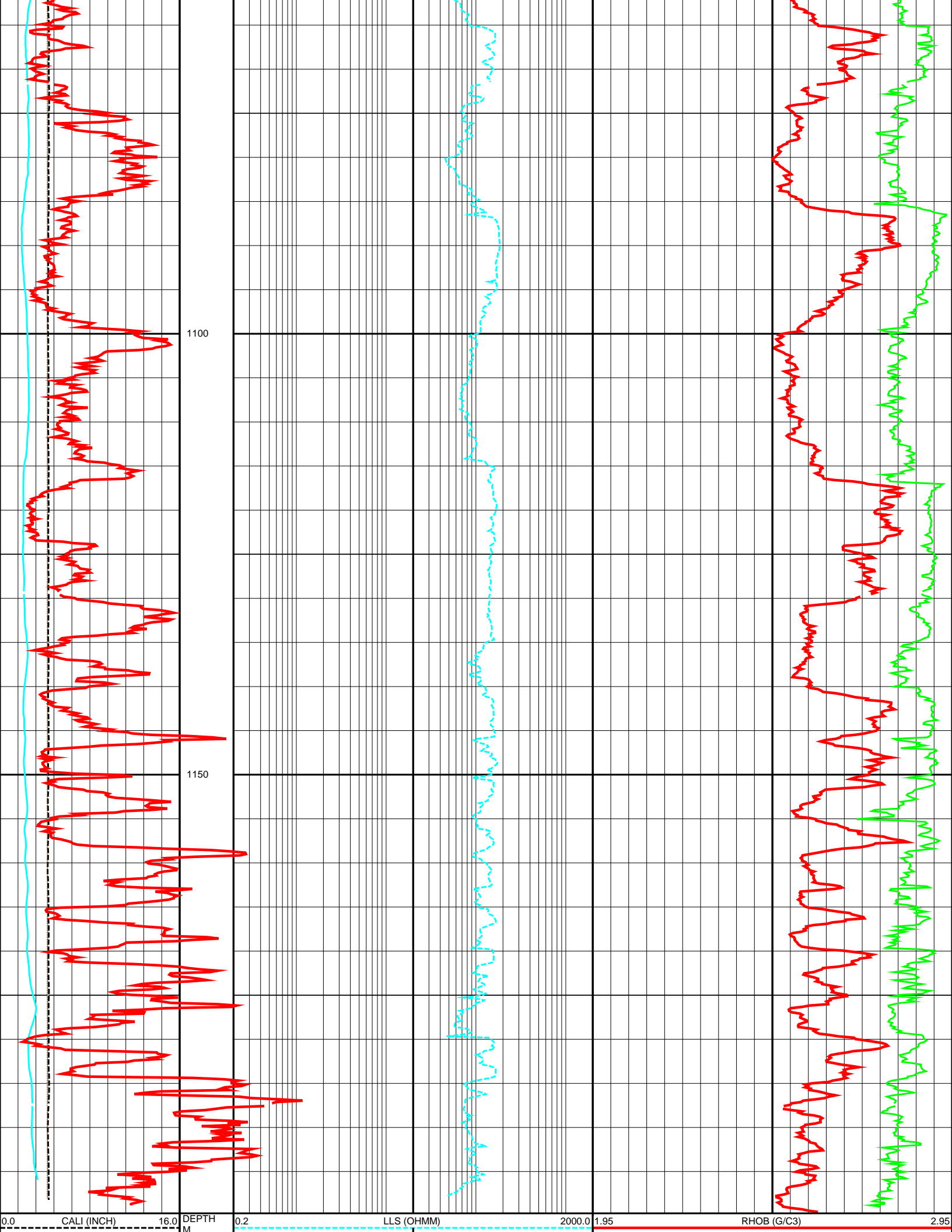












-50.0	SP (MV)	250.0	1:500
0.0	GR (API)	200.0	
0.0	BS (INCH)	16.0	

0.45	NPHI (V/V)	-0.15
140.0	DT (US/F)	40.0