

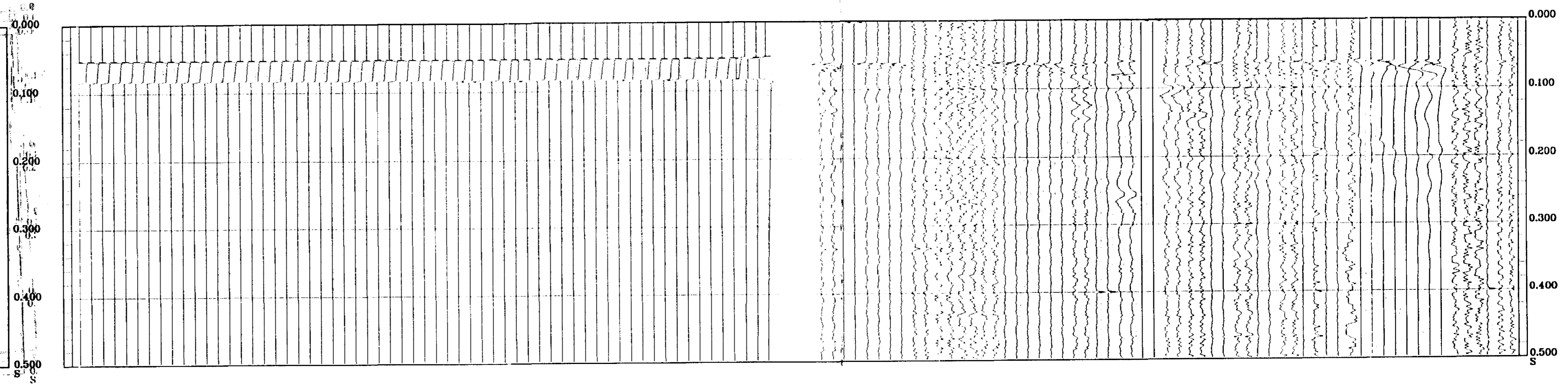
Plot 1

RAW DEPTH	SHOTSEQ NO	LEVEL NO
1115.0	1	1
1115.0	2	1
1115.0	3	1
1115.0	4	1
1115.0	5	1
1115.0	6	1
1115.0	7	1
1065.0	8	2
1015.0	9	3
985.0	10	4
915.0	11	5
885.0	12	6
815.0	13	7
785.0	14	8
715.0	15	9
685.0	16	10
685.0	17	10
685.0	18	11
685.0	19	11
615.0	20	12
615.0	21	12
585.0	22	13
585.0	23	13
515.0	24	14
515.0	25	14
515.0	26	14
515.0	27	14
485.0	28	15
485.0	29	15
485.0	30	15
485.0	31	15
485.0	32	16
485.0	33	16
485.0	34	16
485.0	35	16
415.0	36	17
415.0	37	17
415.0	38	18
385.0	39	18
385.0	40	18
385.0	41	18
315.0	42	19
315.0	43	19
285.0	44	20
285.0	45	20
214.9	46	21
214.9	47	21
214.9	48	21
214.9	49	21
214.9	50	21
214.9	51	21
214.9	52	21
185.0	53	22
185.0	54	22
185.0	55	22
185.0	56	22
185.0	57	22
115.0	58	23
115.0	59	23
115.0	60	23
115.0	61	23

M	SHOTSEQ NO	LEVEL NO
1115.0	1	1
1115.0	2	1
1115.0	3	1
1115.0	4	1
1115.0	5	1
1115.0	6	1
1115.0	7	1
1065.0	8	2
1015.0	9	3
985.0	10	4
915.0	11	5
885.0	12	6
815.0	13	7
785.0	14	8
715.0	15	9
685.0	16	10
685.0	17	10
685.0	18	11
685.0	19	11
615.0	20	12
615.0	21	12
585.0	22	13
585.0	23	13
515.0	24	14
515.0	25	14
515.0	26	14
515.0	27	14
485.0	28	15
485.0	29	15
485.0	30	15
485.0	31	15
485.0	32	16
485.0	33	16
485.0	34	16
485.0	35	16
415.0	36	17
415.0	37	17
385.0	38	18
385.0	39	18
385.0	40	18
385.0	41	18
315.0	42	19
315.0	43	19
285.0	44	20
285.0	45	20
214.9	46	21
214.9	47	21
214.9	48	21
214.9	49	21
214.9	50	21
214.9	51	21
214.9	52	21
214.9	53	21
214.9	54	21
185.0	55	22
185.0	56	22
185.0	57	22
185.0	58	22
115.0	59	23
115.0	60	23
115.0	61	23

PR97/1A

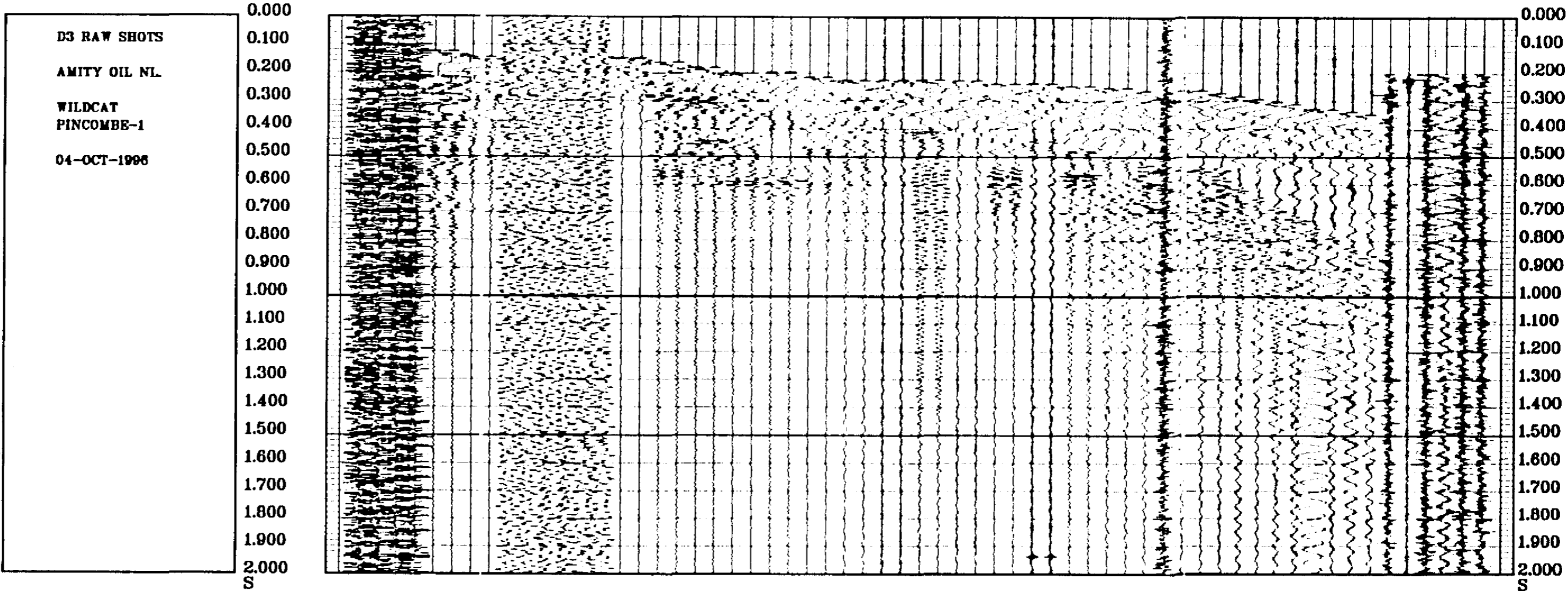
AMITY OIL NL
 WILDCAT OIL NL
 PINCOMBE-1
 WESTERN AUSTRALIA
 WESTERN AUSTRALIA
 SAT SHOTS
 S1 HYDROPHONE LEFT
 S2 HYDROPHONE RIGHT
 04-OCT-1996
 04-OCT-1996



R97/1A

Plot 2

RAW DEPTH	SHOTSEQ NO	LEVEL NO	CSU SHOT NO
1115.0	1	1	1
1115.0	2	1	2
1115.0	3	1	3
1115.0	4	1	4
1115.0	5	1	5
1115.0	6	1	6
1115.0	7	1	7
1065.0	8	2	8
1015.0	9	3	9
965.0	10	4	10
915.0	11	5	11
885.0	12	6	12
815.0	13	7	13
785.0	14	8	14
715.0	15	9	15
685.0	16	10	16
685.0	17	10	1
685.0	18	11	18
685.0	19	11	17
615.0	20	12	2
615.0	21	12	2
585.0	22	13	3
585.0	23	13	3
515.0	24	14	4
515.0	25	14	4
515.0	26	14	5
515.0	27	14	5
485.0	28	15	6
485.0	29	15	6
485.0	30	15	7
485.0	31	15	7
485.0	32	16	8
485.0	33	16	8
485.0	34	16	9
485.0	35	16	9
415.0	36	17	10
415.0	37	17	10
385.0	38	18	11
385.0	39	18	11
385.0	40	18	12
385.0	41	18	12
315.0	42	19	13
315.0	43	19	13
285.0	44	20	14
285.0	45	20	14
214.9	46	21	15
214.9	47	21	15
214.9	48	21	16
214.9	49	21	16
214.9	50	21	17
214.9	51	21	17
214.9	52	21	18
214.9	53	21	18
214.9	54	21	19
165.0	56	22	19
165.0	57	22	20
115.0	58	23	20
115.0	59	23	21
115.0	60	23	21
115.0	61	23	22



Plot 3

PR97/1A

AMITY OIL

WILDCAT

PINCOMBE-1

WESTERN AUSTRALIA

PLOT REFERENCE : RAW STACKS

DATE PROCESSED : 04TH OCTOBER 1996

**** L1 STACKED DATA ****
(X - COMPONENT)

PROCESSING SEQUENCE:
 MEDIAN STACK APPLIED

SCALE : 20 CM/SEC
 POLARITY (S.E.G.) : NORMAL

**** L2 STACKED DATA ****
(Y - COMPONENT)

PROCESSING SEQUENCE:
 MEDIAN STACK APPLIED

SCALE : 20 CM/SEC
 POLARITY (S.E.G.) : NORMAL

**** L3 STACKED DATA ****
(Z - COMPONENT)

PROCESSING SEQUENCE:
 MEDIAN STACK APPLIED

SCALE : 20 CM/SEC
 POLARITY (S.E.G.) : NORMAL

RAW DEPTH M	TRANSIT TIME S	LEVEL NO
165.0	0.070	15
214.9	0.091	21
265.0	0.109	20
315.0	0.128	19
365.0	0.144	18
415.0	0.162	17
465.0	0.173	16
515.0	0.184	14
565.0	0.193	13
615.0	0.201	12
665.0	0.210	10
715.0	0.218	9
765.0	0.230	8
815.0	0.240	7
865.0	0.250	6
915.0	0.257	5
965.0	0.273	4
1015.0	0.275	3
1065.0	0.285	2
1115.0	0.294	1

