



# COMPOSITE WELL LOG PINCOMBE-1

Scale 1:500

LOCATION : LAT.: 15° 21' 01.54" S LONG.: 129° 01' 03.75" E PERMIT : EP 66 REGION : BONA PARTE BASIN N.V.

ELEVATIONS : K B 24.5 m. amsl TOTAL DEPTH : 1118 m WELLS STATUS : PLUGGED AND ABANDONED

RIG : CYGNET RIG 1 IDECO RAMBLER H45C PERFORATIONS : NI DRILLING CONTRACTOR : CYGNET DRILLING SERVICES

DATE SPOOLED : 18.09.96 WIRELINE LOGGING BY : Schlumberger

DATE AT TOTAL DEPTH : 01.10.96 CEMENTING : Cygnat Drilling Services

DATE RIG RELEASED : 04.10.96 MID LOGGING BY : Pectil Engineering

LOGS COMPLETION : AMITY OIL N.L. DRAFTING : Biron Drafting Service

**ELECTRIC LOGS DATA**

LOG SUFFIX/NUMBER  
LOG TYPE/COMBINATION  
DATE  
INTERVAL RECORDED  
MUD TYPE

171	271	371
DLL-MSFL-CHC-GR-SP	DLL-DML-GR	SAT
01.10.96	02.10.96	02.10.96
1114.5-240.0m	1118.5-248.0m	1115.0-185.0m
KCL/PPA	KCL/PPA	KCL/PPA

Ref @ TEMP MEAS.  
0.32°C OHMM @26.5% 0.37°C OHMM @31°C

**CASING**

SIZE	WEIGHT	INTERVAL
244mm	54kg/m	0-250m

**CEMENT PLUGS**

FROM	TO	CLASS
750	800	CLASS 'A'
300	200	CLASS 'A'
50	0	SURFACE CLASS 'A'

**HOLE SIZE**

SIZE	FROM	TO
mm	m	m
311	4	251
216	251	1118

**ENGINEERING SYMBOLS**

▣ CASING BEAT  
⊠ DRILL STEM TEST  
⊥ PERFORATED INTERVAL

■ CORE No. AND INTERVAL  
— SIDEWALL CORE (Not recovered)  
— Repeat Formation Test-RFT (or FET)  
— RFT SAMPLE RECOVERED  
2" DEVIATION SURVEY

**LITHOLOGY SYMBOLS**

ROCK TYPE  
SANDSTONE (medium)  
SANDSTONE (fine)  
SILTSTONE  
CLAYSTONE/SHALE  
CONGLOMERATE  
TILLITE  
COAL

LIMESTONE (massive)  
LIMESTONE (porphyroclastic)  
CALCARENITE  
CALCIBLITITE  
MARL  
DOLMITE

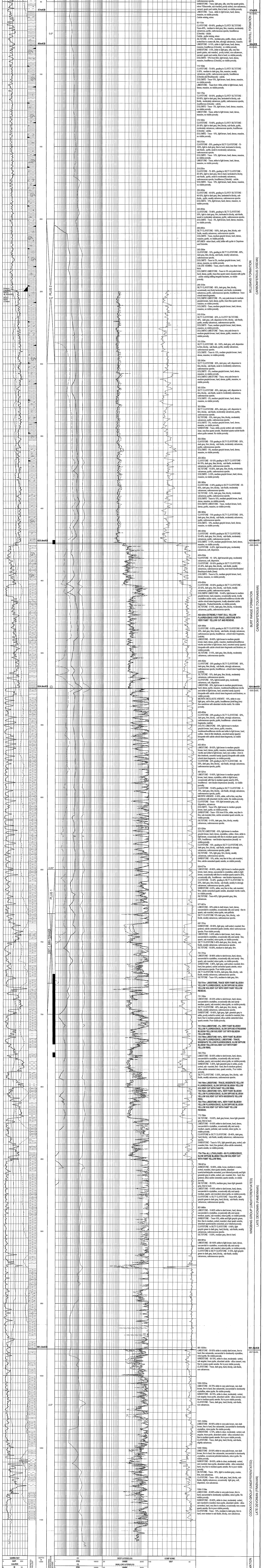
MALITE  
GYPSUM  
ANHYDRITE  
VOLCANICS  
METAMORPHIC BASEMENT  
DOLMITE

OTHER CONSTITUENTS  
ARGILLACEOUS  
GLAUCONITIC  
FELDSPATHIC  
MUCOUS  
PYRITE  
PLANT REMAINS

CALCAREOUS  
DOLOMITIC  
CHERT  
GARNETIFEROUS  
KALONITIC

**SHOW LEGEND**

MODERATE TO STRONG GAS SHOW  
MINOR GAS SHOW  
OIL SHOWS  
FOUR  
GOOD



D.S.T Results : One conventional by-pass straddle test was carried out on Pincombe-1. D.S.T. 1 was carried out over the interval 60-720mKBL by Australian D.S.T. Co. Pty. Ltd., to test a possible oil saturated zone with the sandstones of the Ningbing group indicated from wireline log analysis. Preflow:-19 HRCUGS, >50bbl of watery drilling mud, 200m of muddy water and 300m of fresh water.