



# PR99-2

## COMPLEX LITHOLOGY + LDT RESULTS

Company	AMITY OIL N.L.
Well Name	WEABER-5
Field	WEABER
Country	AUSTRALIA
State	NORTHERN TERRITORY
Province	ONSHORE BONAPARTE
Field Location	015 19' 58.680" S DMS
Latitude	129 07' 33.870" E DMS
Longitude	MSL
Permanent Datum	.00 M
Elevation of PD	38.75 M
Elevation of KB	
Elevation of DF	
Elevation of RT	
Elevation Ground Lv	34.00 M
Log measured from	KB
Drill measured from	KB
Services	CNS-PDS
Other Services Ln 1	
Service company	BPB Wireline Services
Basin	BONAPARTE
Tenement/Concession	RL-1
Date logged	20-OCT-1998
Date computed	21-10-98
Date plotted	04-12-98
Time plotted	09:59:35

Software by Crocker Data Processing Program Revision 6.31

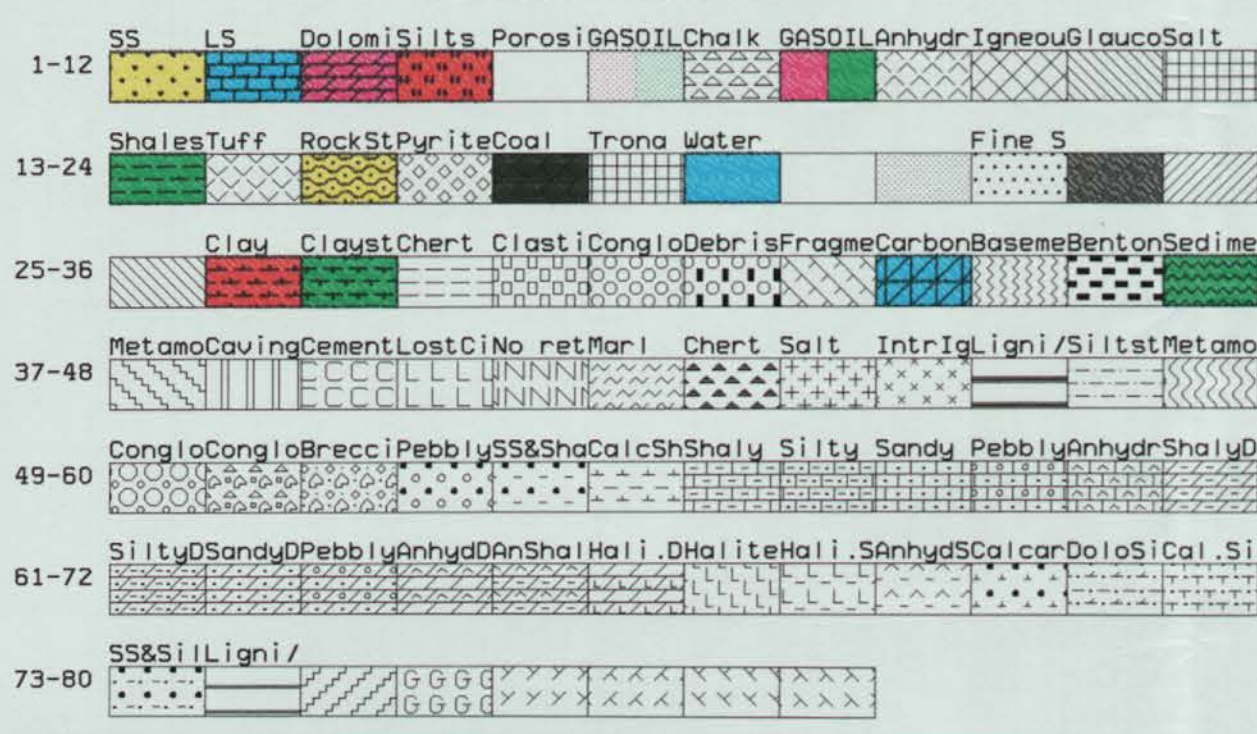
### COMPUTATION PARAMETERS

DEPTH INTERVAL	Rw	TEMP	GR	GR	R	RHOB	PHIN	t	RHOH	a	m	n
			MIN	MAX	Clay	Clay	Clay	Clay				
501.0 600.0	.100	45.2	24	133	17	2.50	.260	84	.80	.62	2.15	2.0
600.1 800.3	.110	50.2	23	138	12	2.51	.260	84	.80	.62	2.15	2.0
800.4 1000.0	.109	56.9	24	143	11	2.49	.260	84	.80	.62	2.15	2.0
1000.1 1260.5	.112	64.6	23	154	7.9	2.51	.260	85	.80	.62	2.15	2.0
1260.6 1308.9	.105	69.8	30	135	11	2.63	.241	79	.80	.62	2.15	2.0
1309.0 1350.0	.071	71.3	27	150	8.4	2.63	.222	79	.10	.62	2.15	2.0
1350.1 1590.3	.099	76.0	30	159	19	2.53	.266	86	.20	.62	2.15	2.0

REMARKS  
Logging finished 21st Oct 1998 at 05:13:29

Since well log interpretations are opinions based upon inferences from well logs we cannot and do not guarantee the correctness or accuracy of any interpretation. Therefore we shall not be liable or responsible for any loss, damage, cost or expense incurred or sustained by anyone resulting from any interpretation.

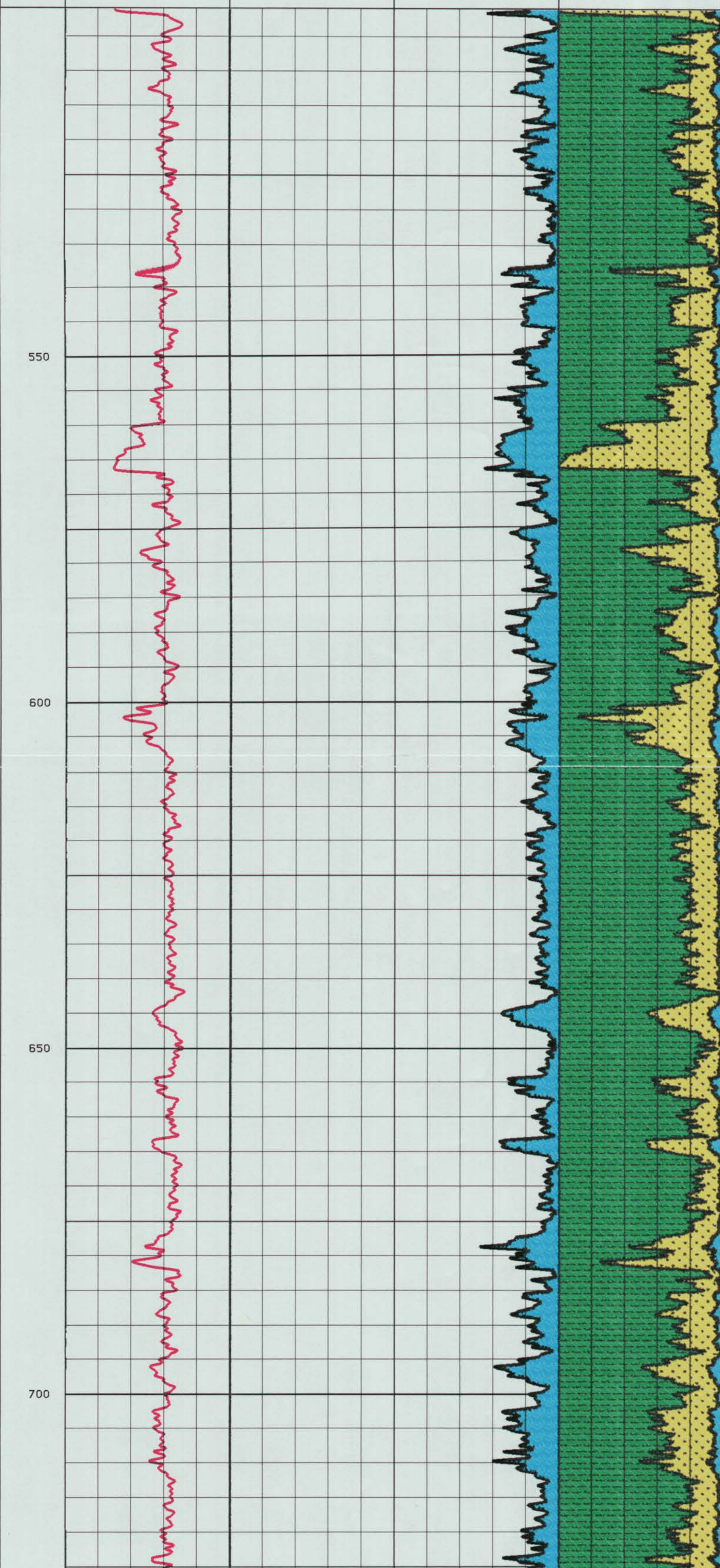
### LITHOLOGIES

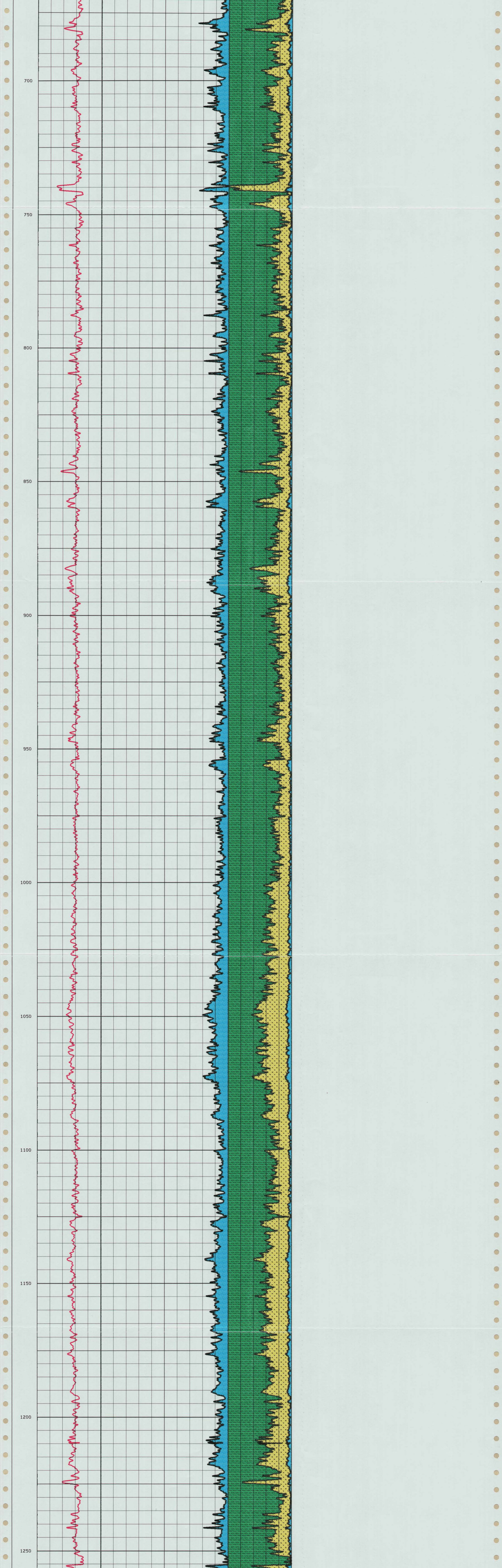


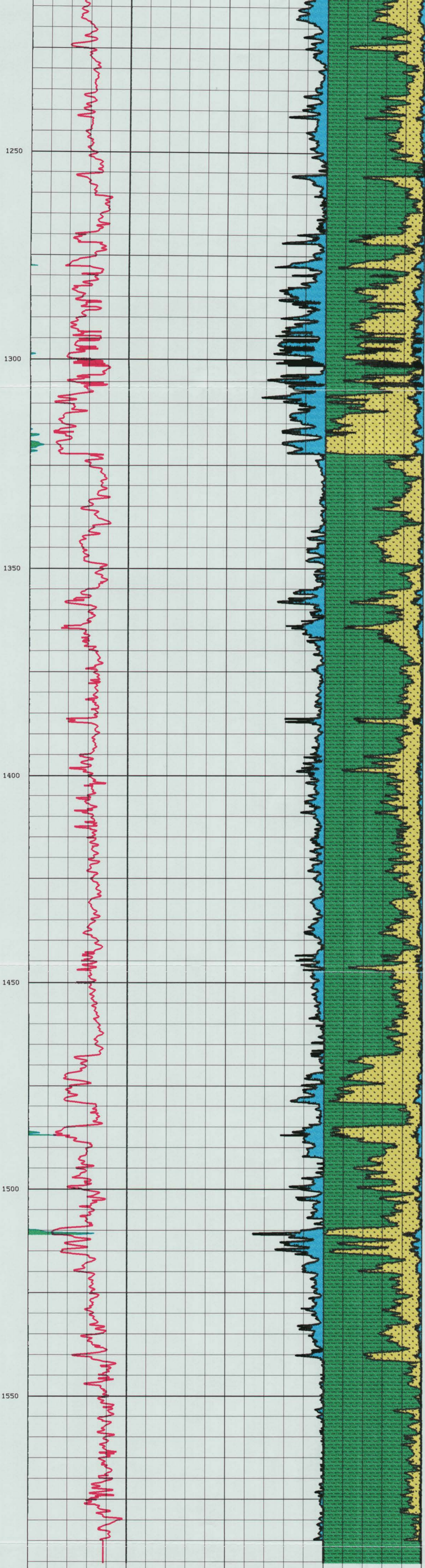
### LOG DESCRIPTIONS

- ROMA-CPX Apparent Matrix Density (Complex Litho Model)
- SPI -CPX Secondary Porosity Index = PHIT-PHIS >=0 (Complex Litho Model)
- PAY -CPX Pay flag (Complex Litho Model)
- SW -CPX Formation Water Saturation <=1.0 (Complex Litho Model)
- DD Caliper-bit size
- PHIE-CPX Effective Porosity (Complex Litho Model)
- PHXO-CPX Product (PHIE \* SXO) (Complex Litho Model)
- PHSW-CPX Product (PHIE \* SW) (Complex Litho Model)
- MINERAL Special Mineral Table output flag (Salt, Trona, Anhydrite, Gypsum, Coal)
- UCL -CPX
- USND-CPX
- ULS -CPX
- UDOL-CPX
- PHIE-CPX
- PHSW-CPX

DEPTH ft	ROMA-CPX	SW -CPX	PHIE-CPX	UCL -CPX
1:500	2.50 G/CC	3	0 .25 PU	0 0
			DD	USND-CPX
0	PU	.25	INCH	20 0
	PAY -CPX			PHXO-CPX
30		0	.25	0 0
				PHSW-CPX
			.25	0 0
				PHIE-CPX
				1 PU
				PHSW-CPX
				1 0







ROMA-CPX	SW -CPX	PHIE-CPX	UCL -CPX
2.50 G/CC	3 1 PU	0 .25 PU	0 0 1
SPI -CPX		DP	USND-CPX
0 PU	.25 -20	INCH	20 0 1
PAY -CPX		PHXO-CPX	ULS -CPX
30 0		.25	0 0 1
		PHSW-CPX	VDOL-CPX
		.25	0 0 1
			PHIE-CPX
			1 PU 0
			PHSW-CPX
			1 0