

# CROCKER

## DATA PROCESSING

# ALTREE-2

## Composite Logs

Company	PACIFIC OIL & GAS PTY LTD
Well Name	ALTREE-2
Field	MACARTHUR BASIN
Country	AUSTRALIA
State	N.T.
Latitude	015 55' 30.000" S DMS
Longitude	133 47' 07.000" E DMS
Perm. Datum	MSL
Elevation Perm. Datum	0.00 M
Elevation DF (wrt EPD)	216.40 M
Elevation GL (wrt EPD)	214.00 M
Elev. Log Zero (wrt EPD)	216.40 M
Log measured from	DF
Drill measured from	DF
Services	SLIM LINE: GR-CALI-DUAL RES-SP
Other Services Ln 1	NN1- DD3 MS1
Other Services Ln 2	SONIC
Service company	BPB
Number of runs	2
Basin	MACARTHUR
Date Plotted	Thursday, 29 May 2008
Time Plotted	3:30:15 PM



PETROLOG SOFTWARE Version 10.5 (Beta)



### Run Information

Run number	1	2			
Log date	6 DEC 1988	8 DEC 1988			
Depth-Driller	209.20 M	1699.85 M			
Depth-Logger	209.50 M	1699.00 M			
Bottom log interval	208.00 M	1698.00 M			
Top log interval	1.00 M	195.00 M			
Casing-Driller	103.40 M	205.70 M			
Casing-Logger	103.00 M	205.50 M			
Drill Bit	2 1/2 INCH	4 1/2 INCH			

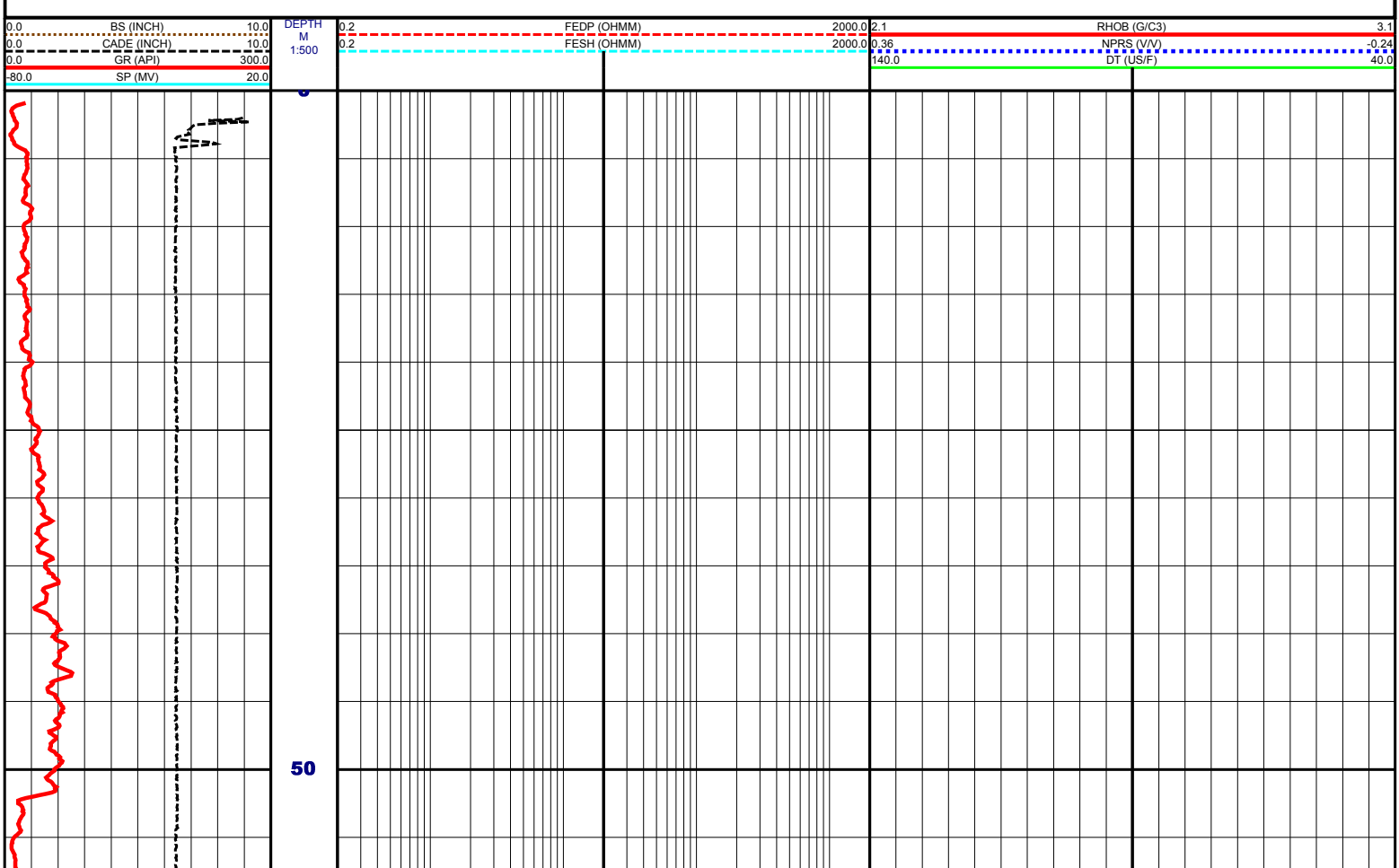
Bit Size	6.125 INCH	4.060 INCH		
Hole Fluid type	NATURAL	KCL POLYMER		
Fluid Density	1.010 G/CC	1.070 G/CC		
Mud Sample Source	PIT	PIT		
RM @ Surface	7.100 OHMM	0.260 OHMM		
Mud temp @ Surface	33.00 DEGC	28.50 DEGC		
RMF @ Surface	4.900 OHMM	0.260 OHMM		
MF temp @ Surface	31.00 DEGC	33.00 DEGC		
Mud Filtrate Sample Source	PRESS	PRESS		
Bottom hole temp	45.00 DEGC	84.00 DEGC		
Logging unit No	328/25	328/25		
Logging unit Loc	BNE	BNE		
Recorded by	D. LONG	D. LONG		
Witness	G. WESTE	J. CHIUPKA		

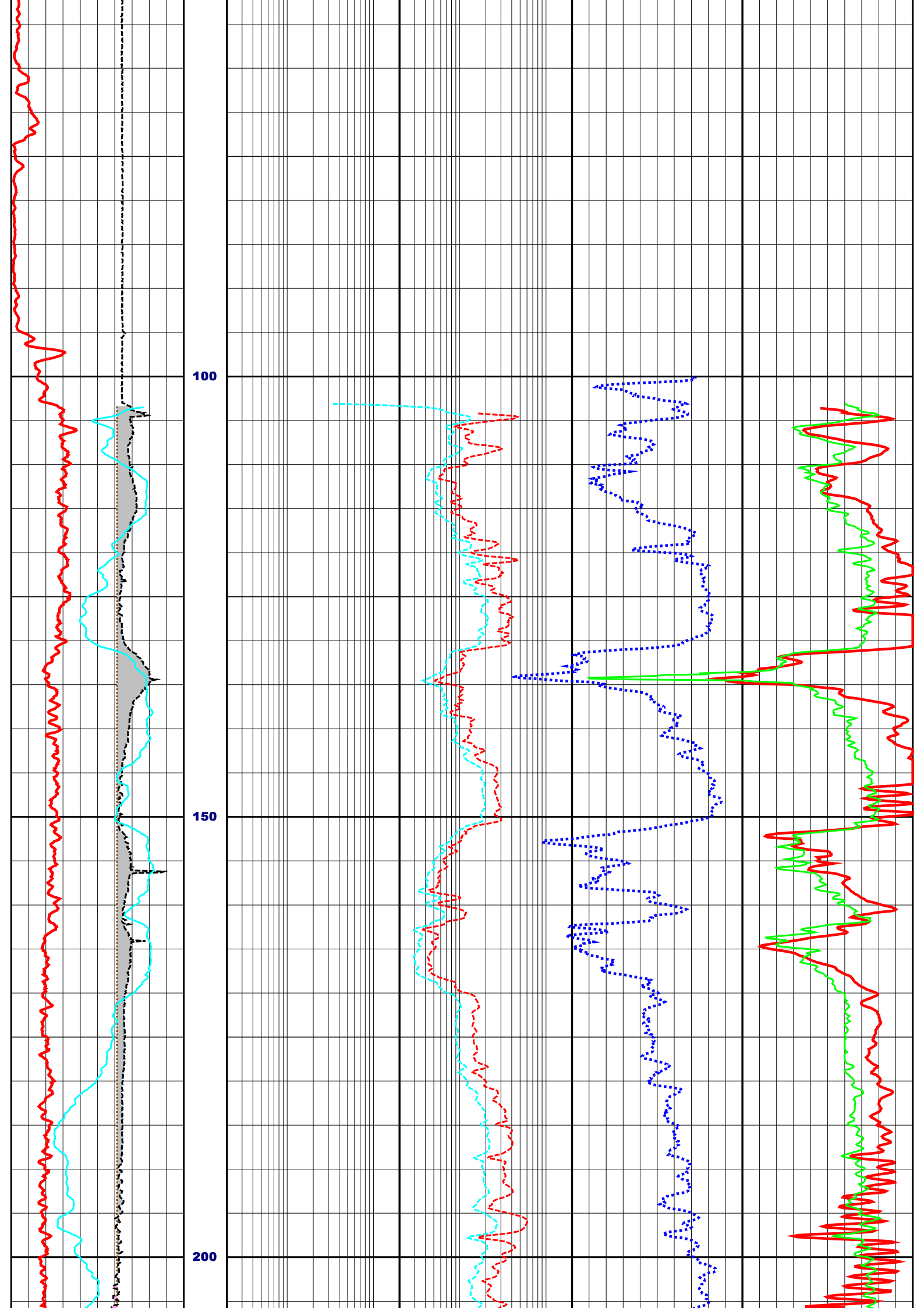
Logs loaded, edited and merged from dumped LIS files by CDP in May 2008  
 SP Drift corrected and smoothed.  
 DT very noisy below 1225 m. Despiked manually.

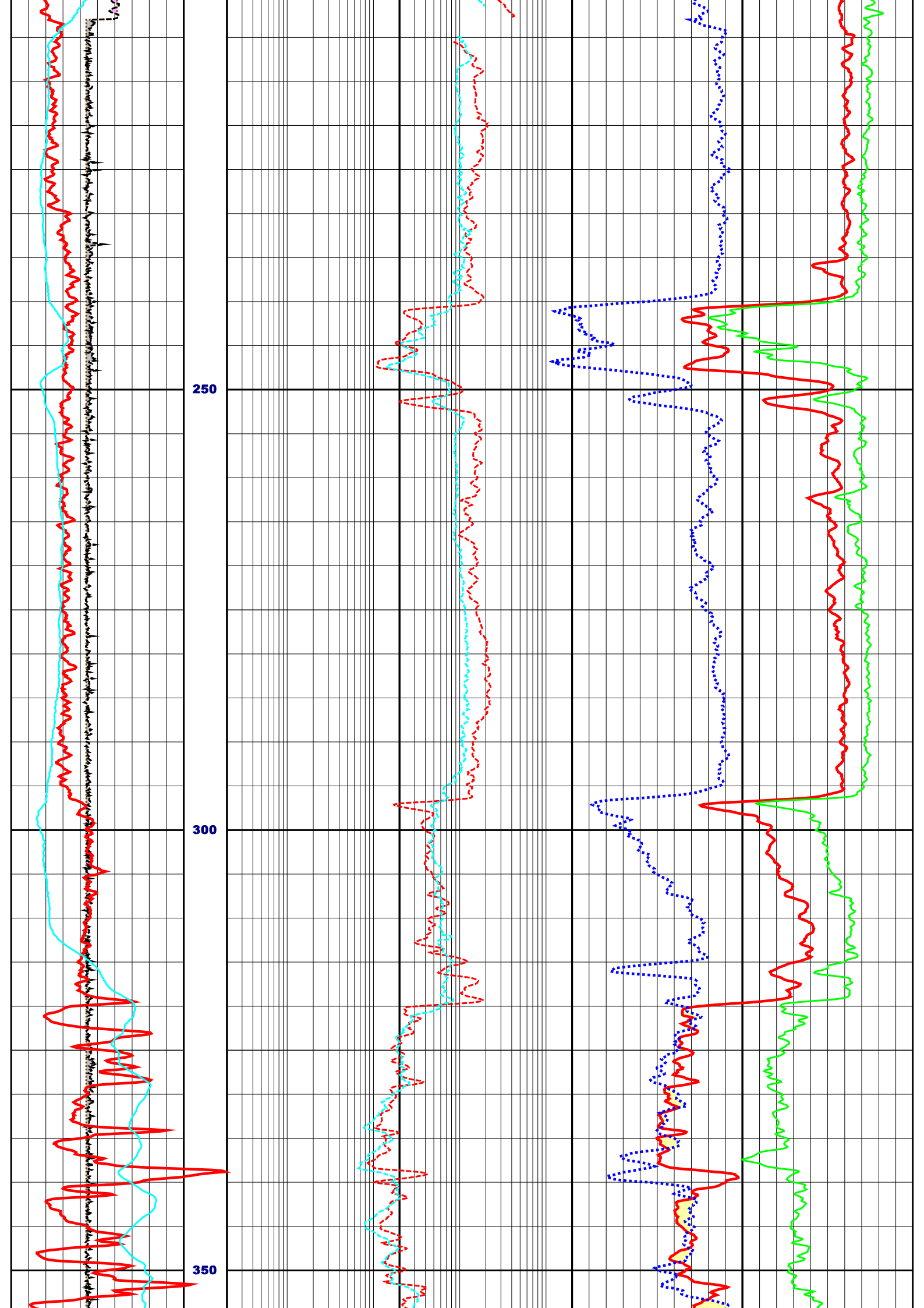
Since well log interpretations are opinions based upon inferences from well logs, we cannot and do not guarantee the correctness or accuracy of any interpretation. Therefore we shall not be liable or responsible for any loss, damage, cost or expense incurred or sustained by anyone resulting from any interpretation.

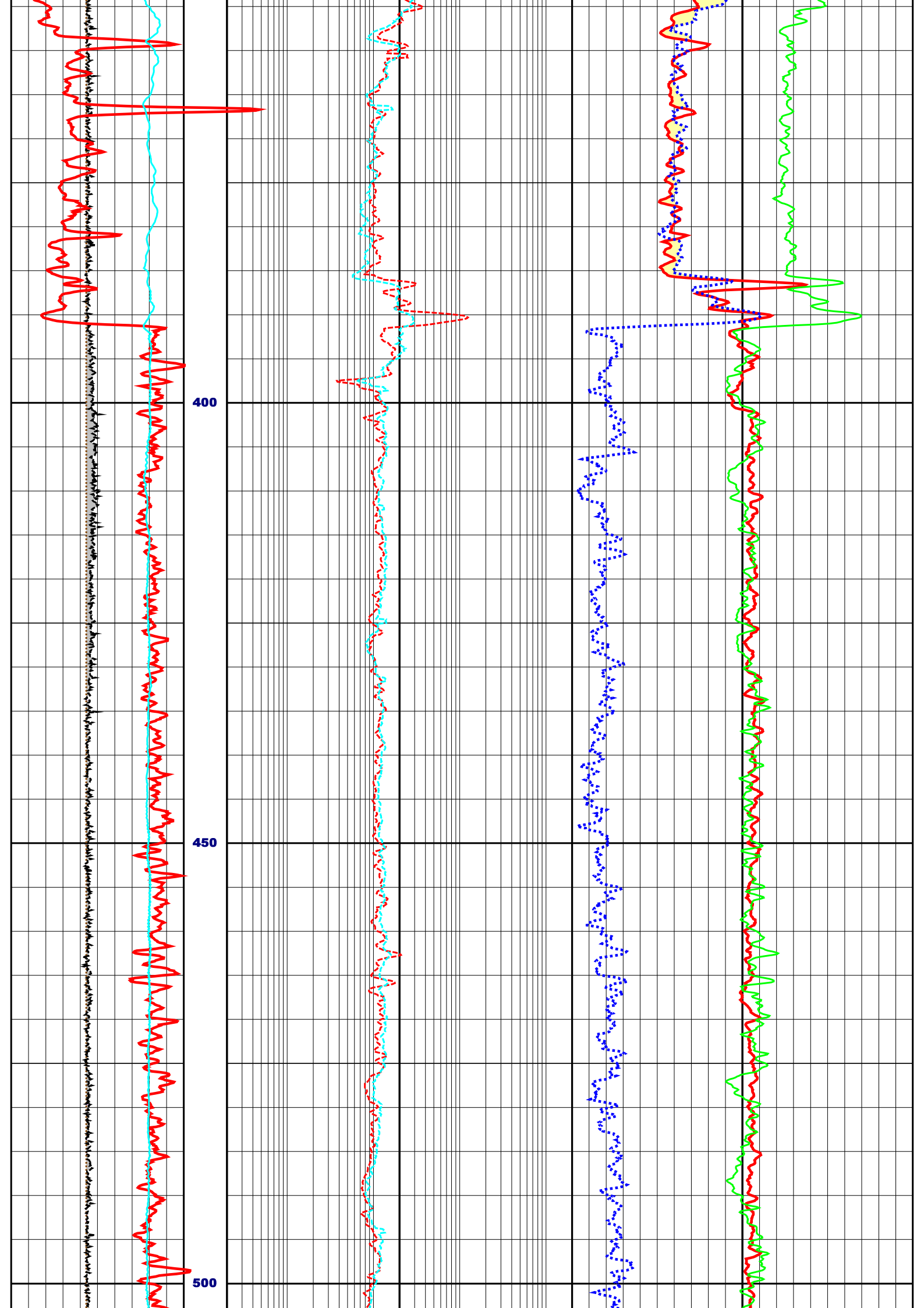
## Log Description

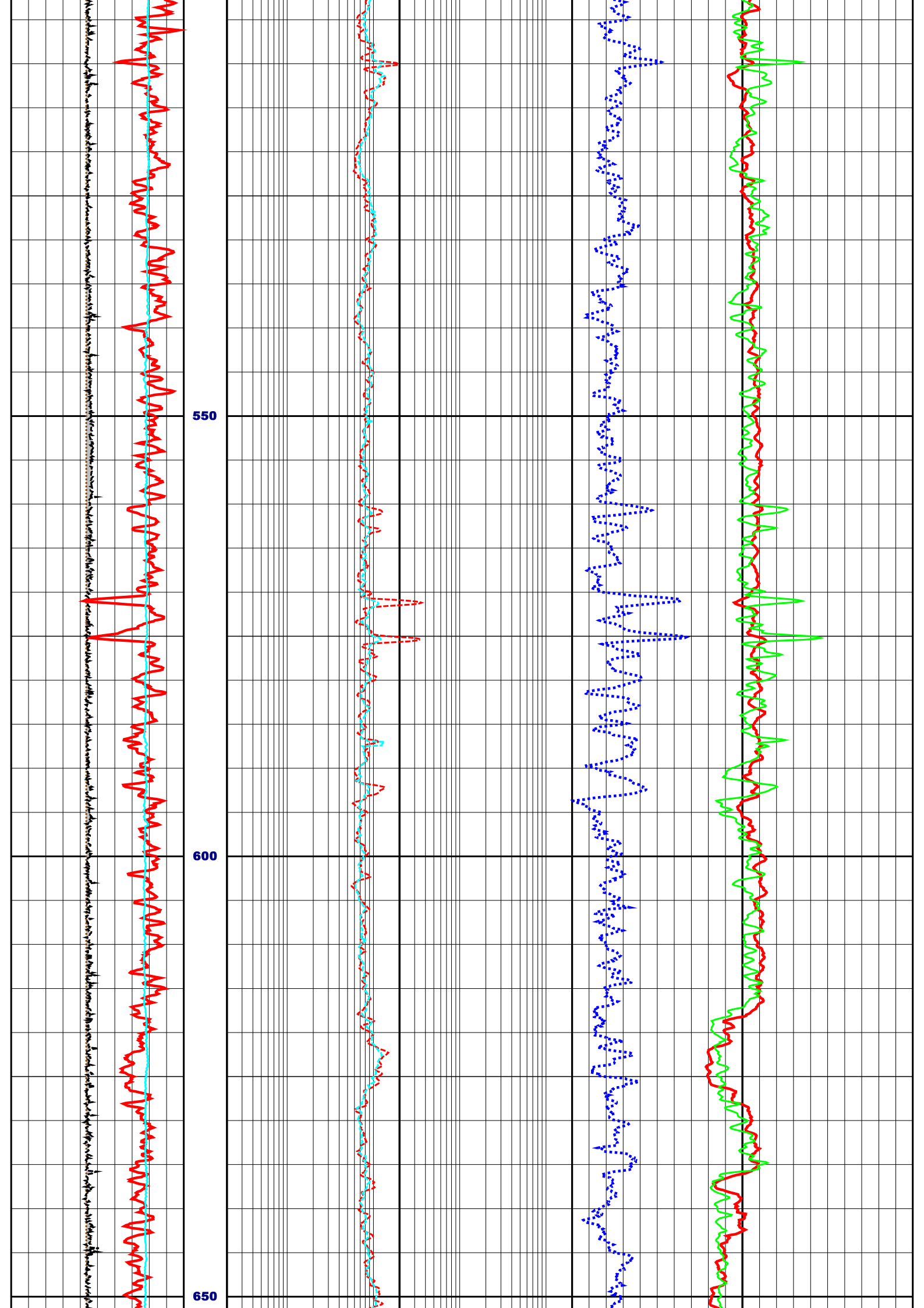
- BS Bit Size
- CADE BPB Density Caliper
- FEDP BPB Slim hole tool Deep Resistivity
- FESH BPB Slim hole tool Shallow Resistivity
- RHOB BPB slim hole tool Density
- NPRS Neutron Sandstone Porosity
- DT Delta T Compensated
- GR Gamma Ray
- SP Spontaneous Potential Log

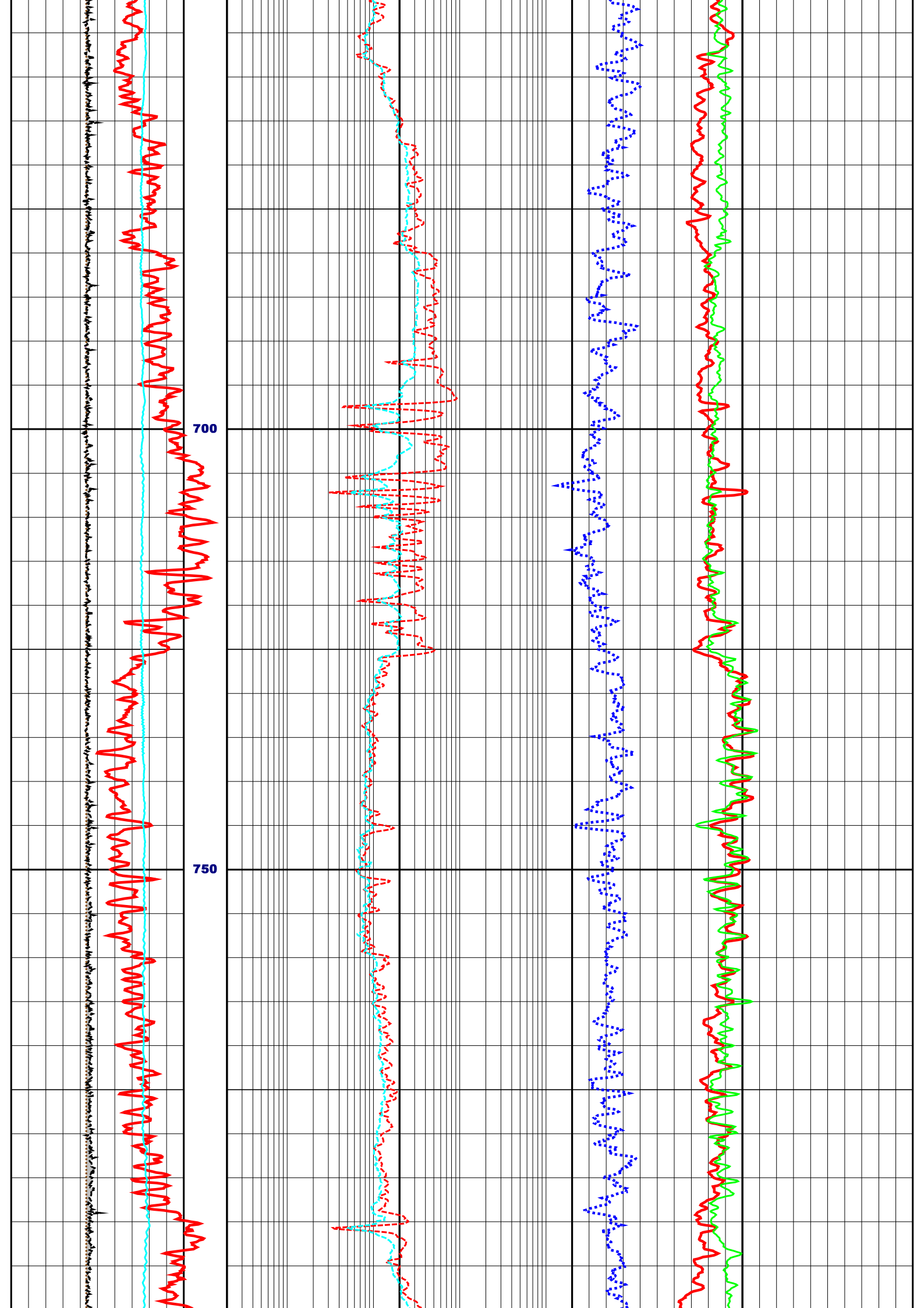


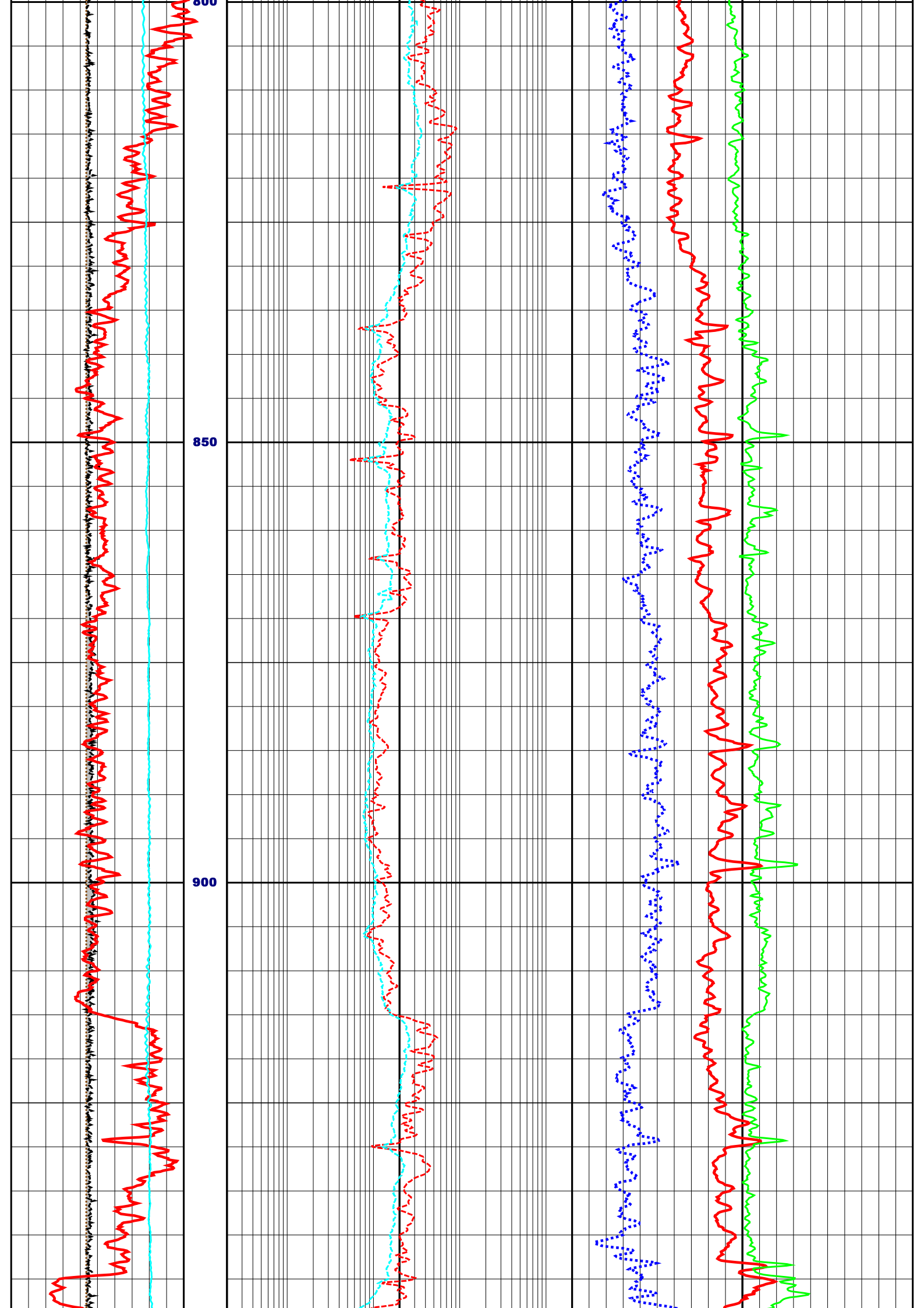




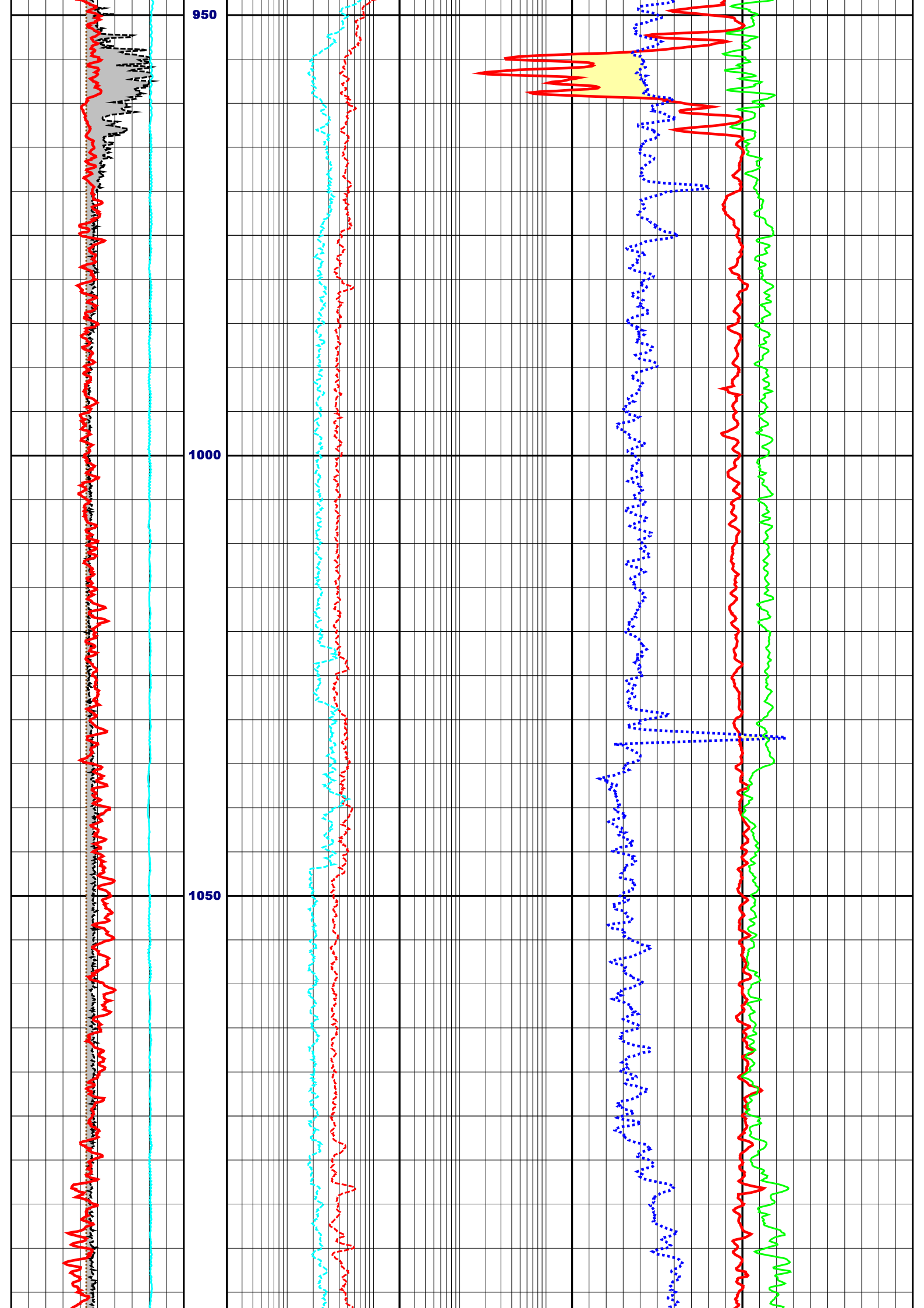


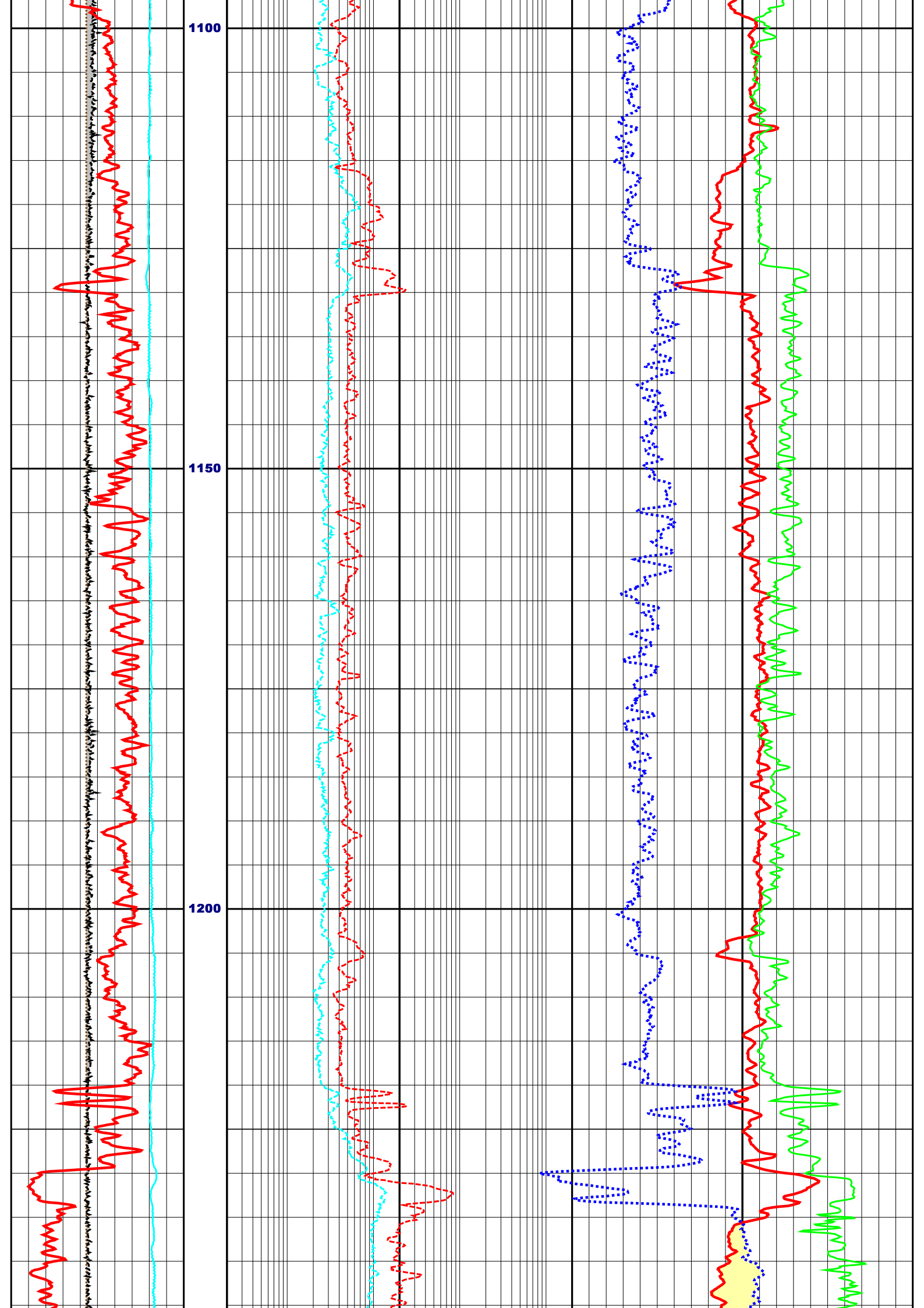


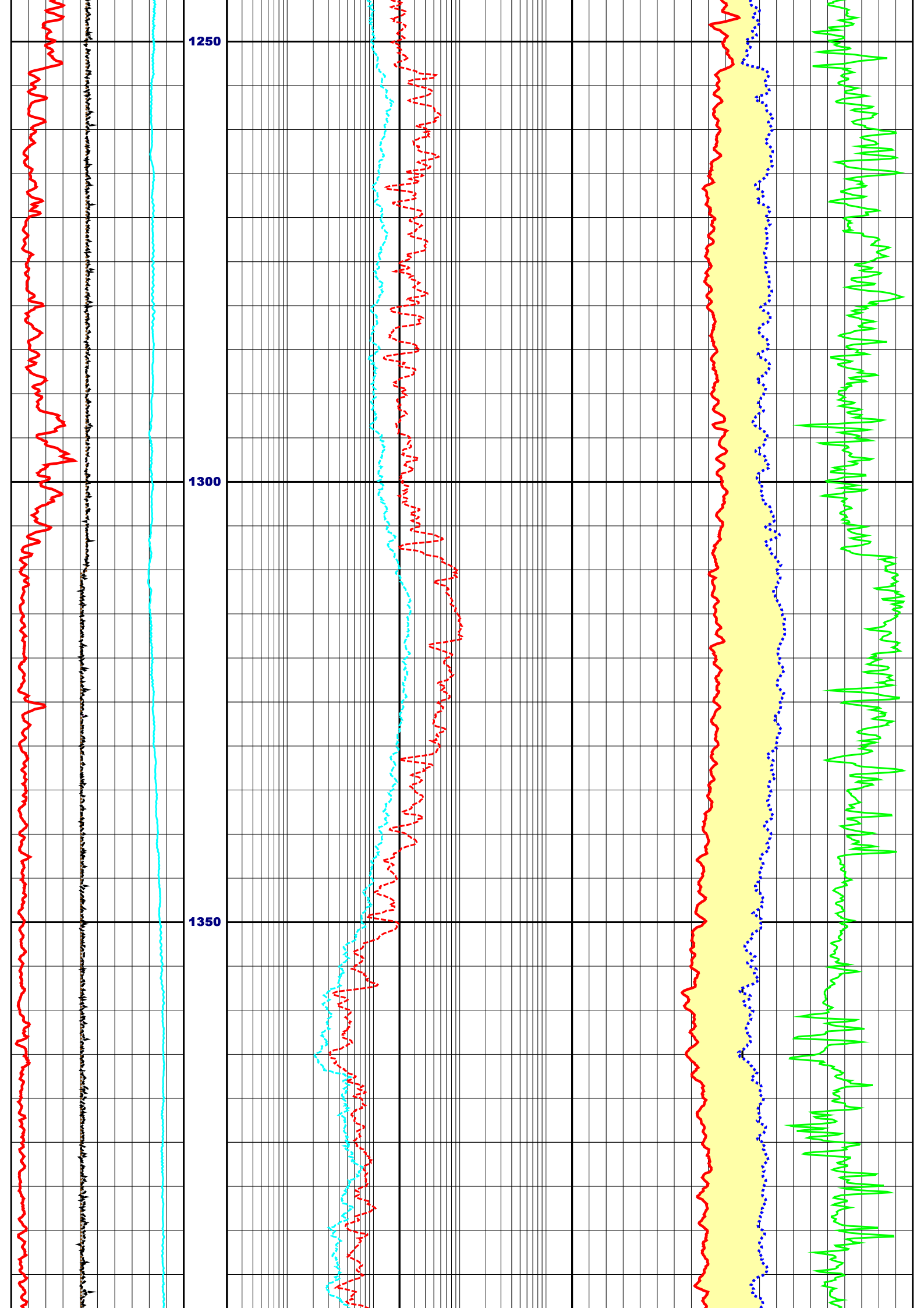


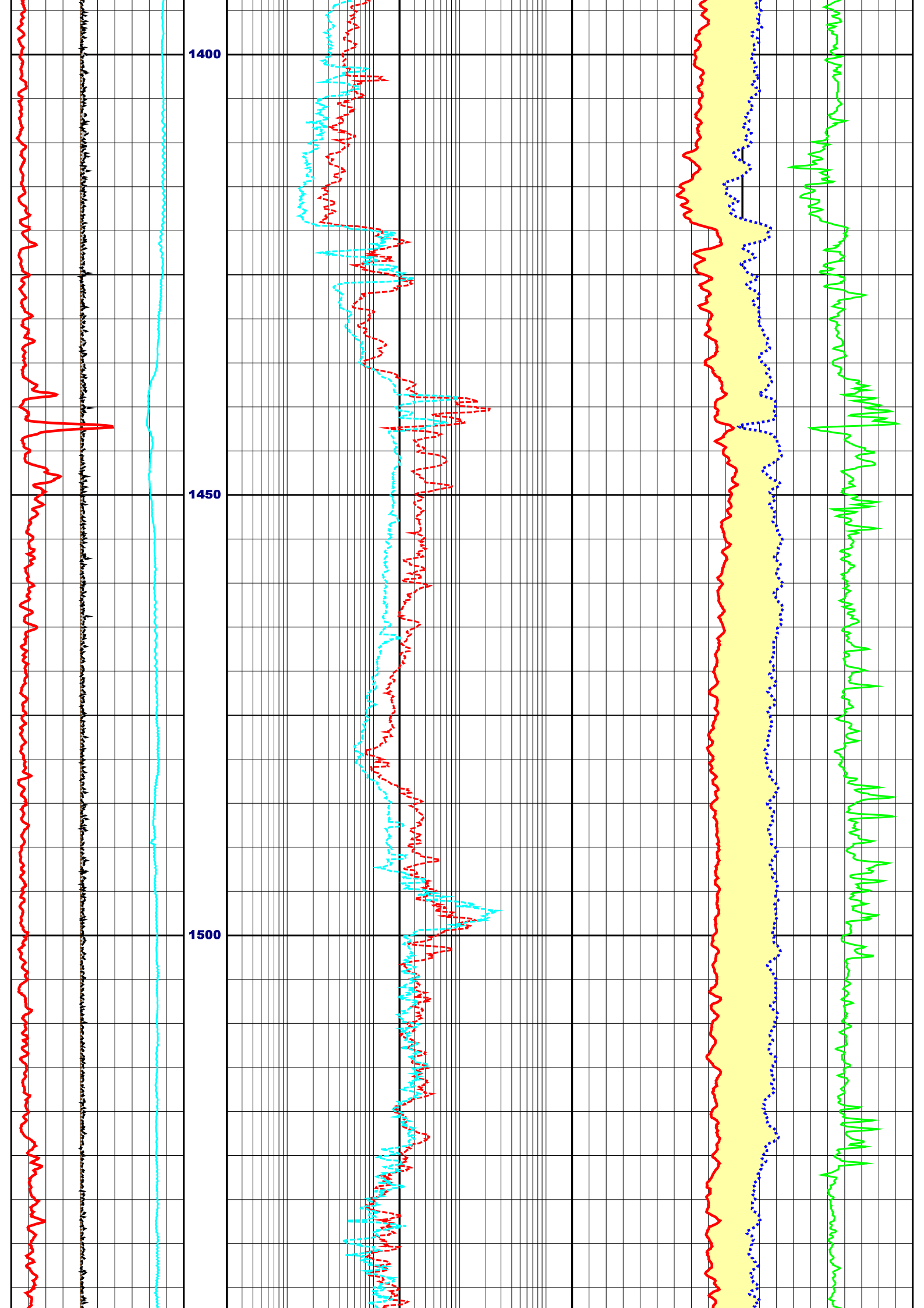


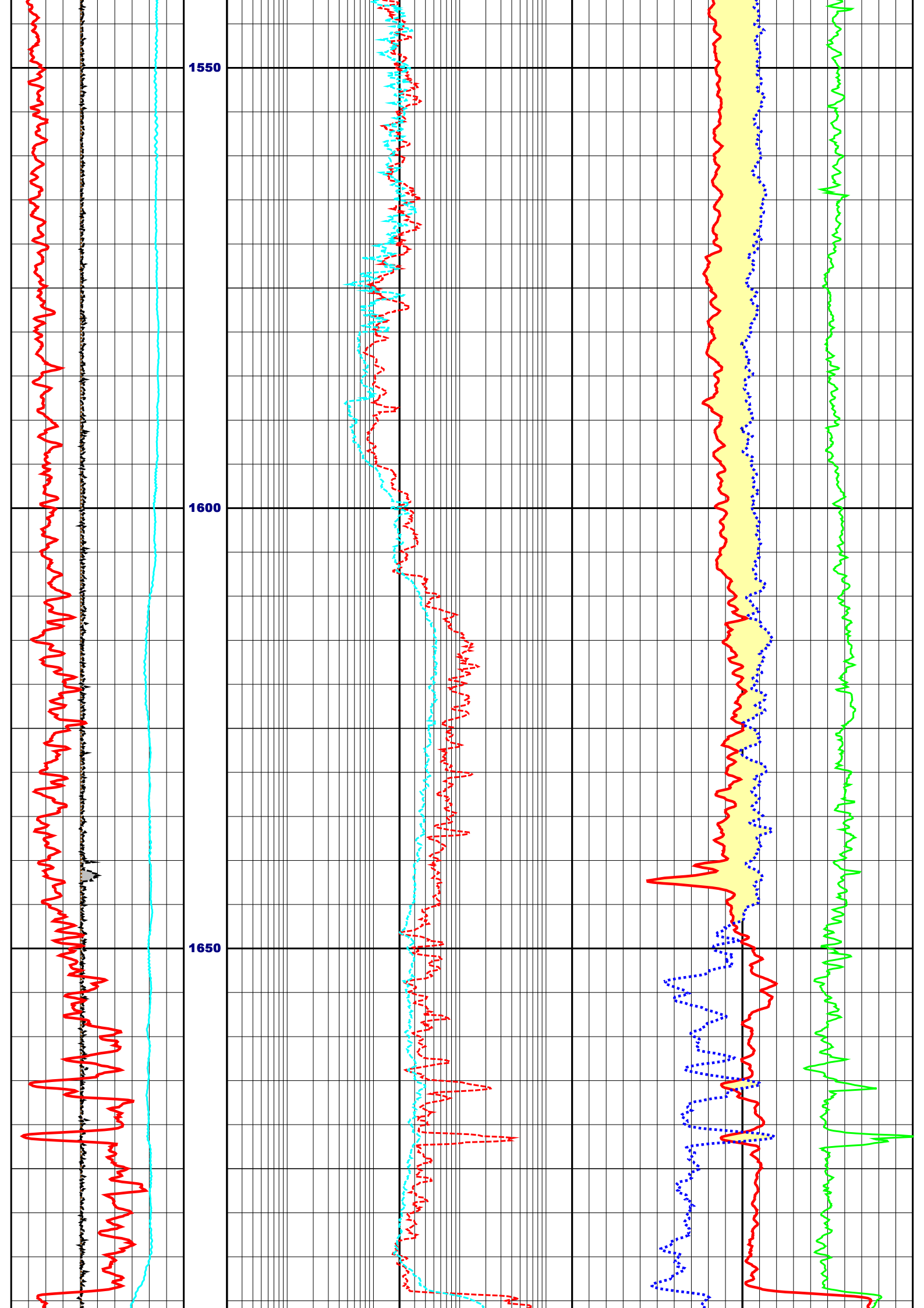


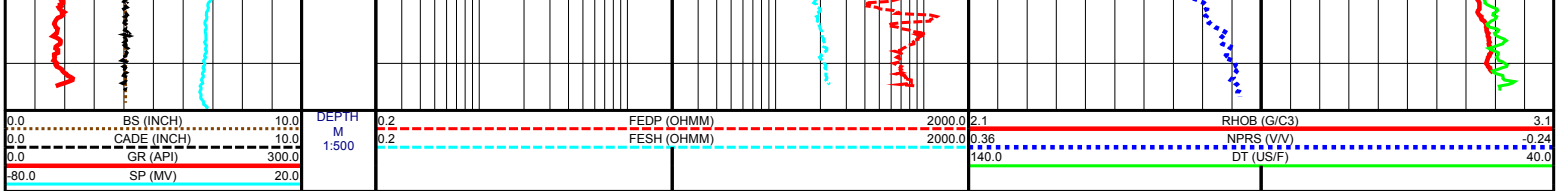












0.0	BS (INCH)	10.0
0.0	CADE (INCH)	10.0
0.0	GR (API)	300.0
-80.0	SP (MV)	20.0

DEPTH  
M  
1:500

0.2	FEDP (OHMM)	2000.0
0.2	FESH (OHMM)	2000.0

2.1	RHOB (G/C3)	3.1
0.36	NPRS (V/V)	-0.24
140.0	DT (US/F)	40.0