

DRILLING RATE
min/ft
1 2 3 4 5 10

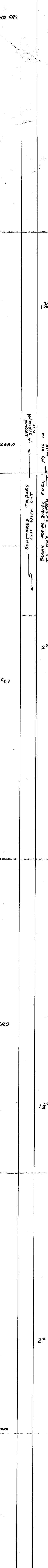
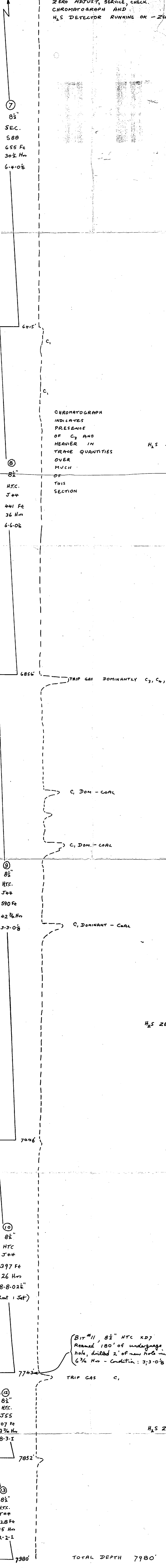
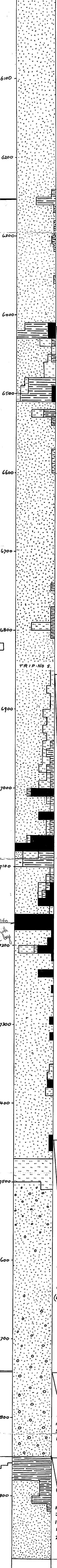
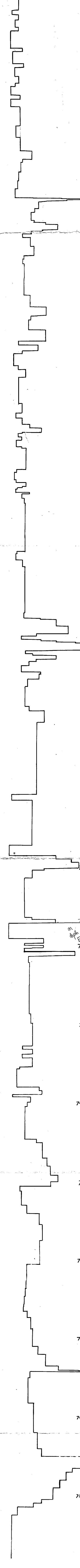
% LITHOLOG

BITS

GAS DETECTOR DATA
0 10 100 1000
ZERO ADJUST, SERVICE, CHECK.
CHROMATOGRAPH AND
H₂S DETECTOR RUNNING OK - ZERO GAS

VELOSITY
STRAINS

ENGINEERING DATA
LITHOLOGIC DESCRIPTION
FORMATION, AGE



5999 - 6010' - weathered profile - red siltstone traces common.

6000' - 6251' - Sandstone - medium to very coarse grained and pebbly, clean along to subrounded quartz, clay and silica cement poor to good porosity, no show.

6251' - Top of basal Triassic section.

6251-6255' - Shale - dark brown - grey to black, silty, carb. and coally, mod. ld. fissile.

6255-6390' - Sandstone - thin red grey, medium to very coarse grained mod. hard friable foot sorted subangular quartz, clay, silica minor calcite cement. Poor to fair por. No show.

Minor interbedded shale - as above.

6390-6402' - S.S. - brown, hard, fine to coarse grained quartz with Fe-stained calc. clay cement. Tight with no show.

6402-6410' - S.S. & grey clay, fine, sp.

6410-6541' - Shale, siltstone, minor sandstone.

Shale: medium to dark brown to black, mod. hard, carb., coally, silty. Siltstone: medium brown, carb., mica, mod. hard.

Sandstone: light grey, fine grained siliceous quartz, hard & brittle, tight, no show.

6541-6780' - Sandstone - medium to coarse grained fair sorted subrounded quartz, silica and clay cement. Porosity poor to fair generally, is excellent in parts (especially at top). Top 30 ft off core has brown stain, no th. or gas. Dried sample gives good cut & texture. (Residual stain).

Traces of fluorescence, no gas in rest of section.

6780' Triassic - shale, siltstone - medium grey, oxidized. S.S. with light silica enrichment. Trace siliceous sulphate min.

6826' - POSSIBLE TOP OF PURNI FM.

6826-7012' - Sandstone, minor siltstone and shale S.S. - thin med grey, fine minor carb, hard, siliceous, foot sorted, lithic, silica & clay cement, generally non-carbonac. Tight with no show.

Siltstone and shale are pale grey and brown, mod. hard, non-carb except in basal 50'.

7012-7240' - COAL, Shale, siltstone and Sandstone.

The coals are black, dull to bright, shaly. No associated gas in sig. quantity.

Shale & siltstone are medium to dark grey to black, carb & coaly in darker parts, mod. hard.

S.S. is foot sorted thin med grey lithic, clayey, silty, tight, no show - similar to that above 7012'.

7240' - 7446' - Sandstone - light to medium grey, mod. hard to hard, lithic foot sorted medium to very coarse grained quartzose, tight to trace poor porosity, no show.

Siltstone - medium grey, finely carbonac. mod. hard.

7446' - 7506' - TOP OF ? CROWN POINT.

7446' - 7506' siltstone pale, med grey, mod. hard, shaly, finely micac, very little organic content.

7506' - 7850' - Conglomeratic S.S. - hard, polygenetic with fine, grey, white, brown quartzite pebbles, white sandstone matrix is fine, clay filled, silty and pyritic, tight with no show.

Interval 7600-7650' is less pebbly, but still is hard, tight with no show.

7850' ? TOP PRE-PERMIAN? Shale - medium grey, some pale green & red brown to chocolate, mod. hard, some phyllitic shales, fissile. Chlorite, muscovite in phyllitic material. S.S. - white fine & th. green, grey, some fine, well sorted subround quartz, silica & clay cement, to chlorite & quartz. Top 30' tight, lower has poor por., no show throughout.

JURASSIC
DE SOULT SANDSTONE
JURASSIC BEDS
EARLY JURASSIC
POOLO WANNA
PERMIAN
CROWN POINT
LOWER PERMIAN
CROWN POINT
? ORDOVICIAN ?

TOTAL DEPTH 7980'