

HORIZON OPERATING CO. - BENNETT PETROLEUM

COMPOSITE WELL LOG

HORIZON-BENNETT-TERRITORY-BRIDGE-ALLCO-ARABASIN

ETINGIMBRA #1

EROMANGA / PEDIRKA / AMADEUS BASINS

Location: LATITUDE: 25° 51' 26.63" S (Final)  
 LONGITUDE: 135° 45' 09.87" E (Final)  
 SEISMIC-STATION: 150, LINE NT87-15

Petroleum Tenement: E.P.1  
 Elevation: K.B.+123m R.T.+120m  
 Date Spudded: 12/01/90  
 Date at T.D.: 18/01/90  
 Rig Release: 20/01/90

Report: TERRITORY PETROLEUM PTY. LTD. & GLOFORT PTY. LTD.  
 Composite Log: TERRITORY PETROLEUM PTY. LTD.

Log Coverage:  
 DDL-MSFL-GR 1005.7-106.6m  
 BCS-GR 1003-106.6m (GR to 16.1m)  
 CDL-CNS-GR 880-633m & 350-292m

Total Depth: 1004.8m (Driller), 1006.3m (Logger)  
 Well Status: PLUGGED & ABANDONED  
 Drafted: A.C.FINCH Date: MARCH, 1990 Scale: 1:500

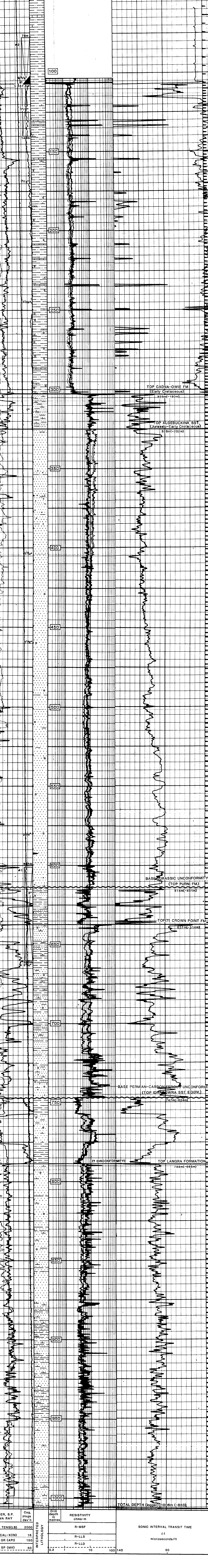
LITHOLOGY			ENGINEERING		
	SANDSTONE		ARGILLACEOUS		GLAUCOPONIC
	SILTSTONE		CALCAREOUS		COARSE SAND
	CLAYSTONE/SHALE		SIDERITIC		UNCONFORMITY
	LIMESTONE		PYRITIC		CASING SHOE
					PLUGGED INTERVAL
					1/2" HOLE DEVIATION

CALIPER, S.P. GAMMA RAY	Csg. plugs, dev'n	Drill depth in metres	RESISTIVITY ohms-m	SONIC INTERVAL TRANSIT TIME
-2000 TENS(LB)	2000		R-MSF	Δt
8 CAL-X(IN)	16		R-LLS	microseconds/ft
0 GR (API)	150		R-LD	
-50 SP (MV)	50		DATUM — K.B. G.L.	

Surface

TOP SURFICIAL DEPOSITS (Tertiary-Recent)  
 3.25m(-120m)

TOP WALLUMBILLA FM. (Early Cretaceous)  
 10m(-113m)



CALIPER, S.P. GAMMA RAY	Csg. plugs, dev'n	Drill depth in metres	RESISTIVITY ohms-m	SONIC INTERVAL TRANSIT TIME
-2000 TENS(LB)	2000		R-MSF	Δt
8 CAL-X(IN)	16		R-LLS	microseconds/ft
0 GR (API)	150		R-LD	
-50 SP (MV)	50		(? DISCONFORMITY)	

TOTAL DEPTH (logger) 1006m (-883)