

CROCKER

DATA PROCESSING

ETINGIMBRA_001

Composite Logs

Company	HORIZON OPERATING CO. / BENNET PETROLEUM
Well Name	ETINGIMBRA_001
Field	WILDCAT
Country	AUSTRALIA
State	N.T.
Latitude	025 00' 51.000" S DMS
Longitude	035 00' 45.000" E DMS
Perm. Datum	MSL
Elevation Perm. Datum	0.00 M
Elev. Log Zero (wrt EPD)	0.00 M
Service Order No	ET # 1
Service company	GEARHART INDUSTRIES
Date Plotted	Thursday, 12 June 2008
Time Plotted	4:08:50 PM



PETROLOG SOFTWARE Version 10.5 (Beta)



Run Information

Run number	1			
Log date	19 JAN 1990			
Depth-Driller	1004.80 M			
Depth-Logger	1006.60 M			
Bottom log interval	1005.70 M			
Top log interval	16.10 M			
Casing-Logger	107.00 M			
Casing Diameter	9.625 INCH			
Bit Size	8.500 INCH			
Fluid Density	1.000 G/CC			
RM @ Surface	1.900 OHMM			
Mud temp @ Surface	60.56 DEGC			
RMF @ Surface	1.500 OHMM			
MF temp @ Surface	60.56 DEGC			
RMC @ Surface	1.300 OHMM			
MC temp @ Surface	60.56 DEGC			
Mud Filtrate Sample Source	MEAS			

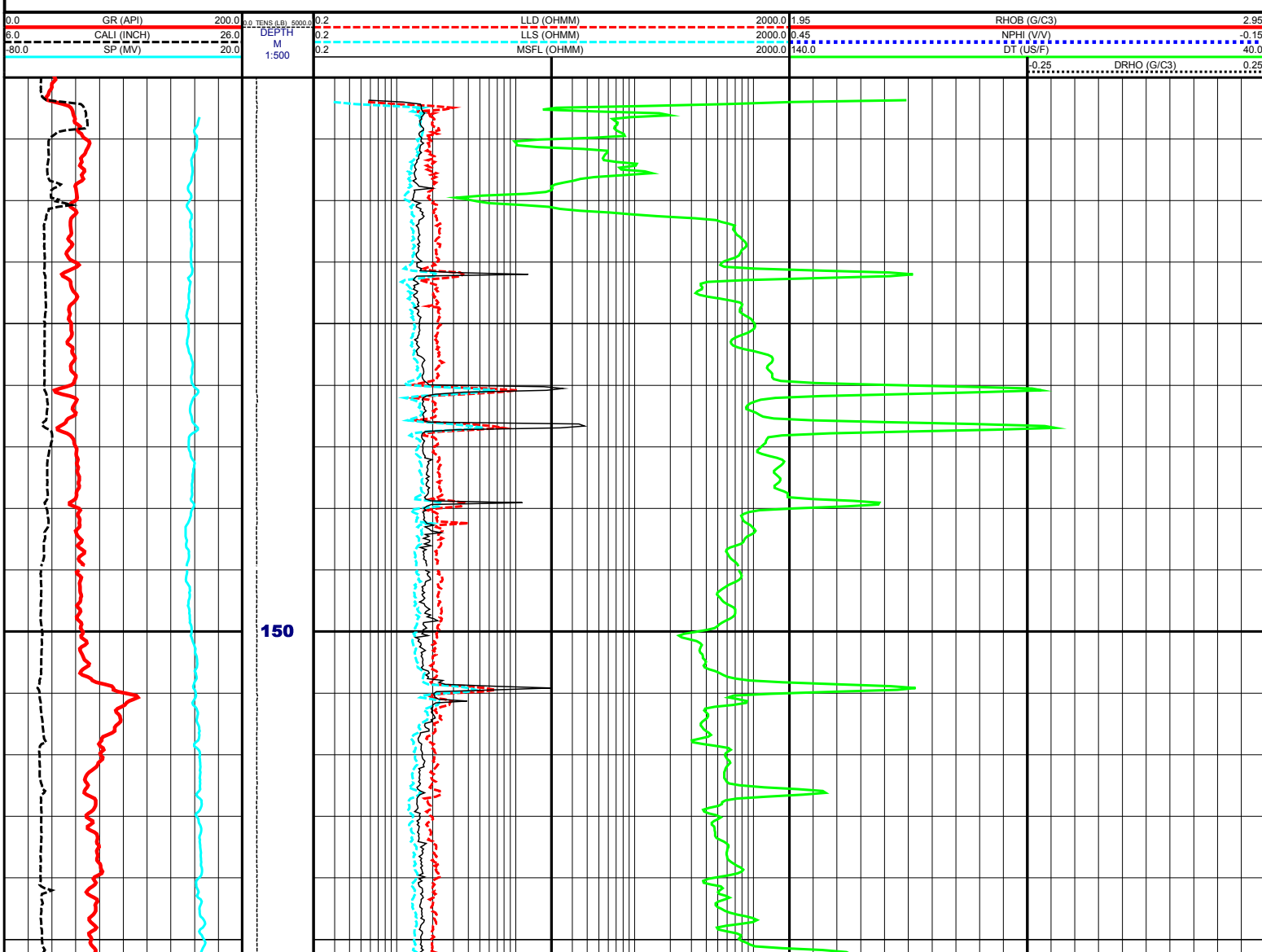
Mud Cake Sample Source	MEAS				
Bottom hole temp	60.56 DEGC				
Logging unit No	DD3				
Logging unit Loc	ROMA				
Logging Company ID	30				
Recorded by	S. JACKSON				
Witness	MR. ROWEKAMP				

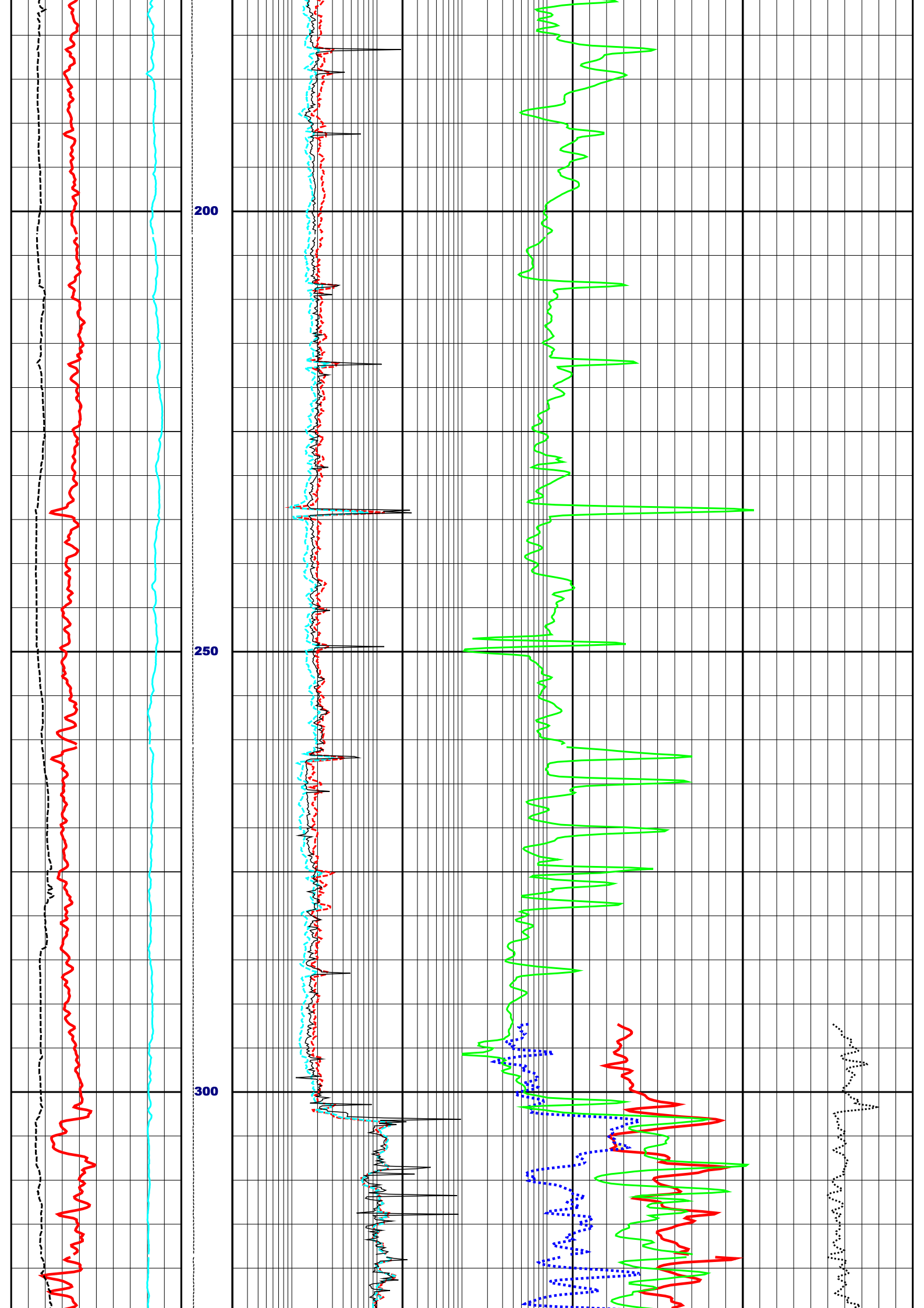
Logs loaded, edited and merged from varioius LIS format tapes by CDP in June 2008

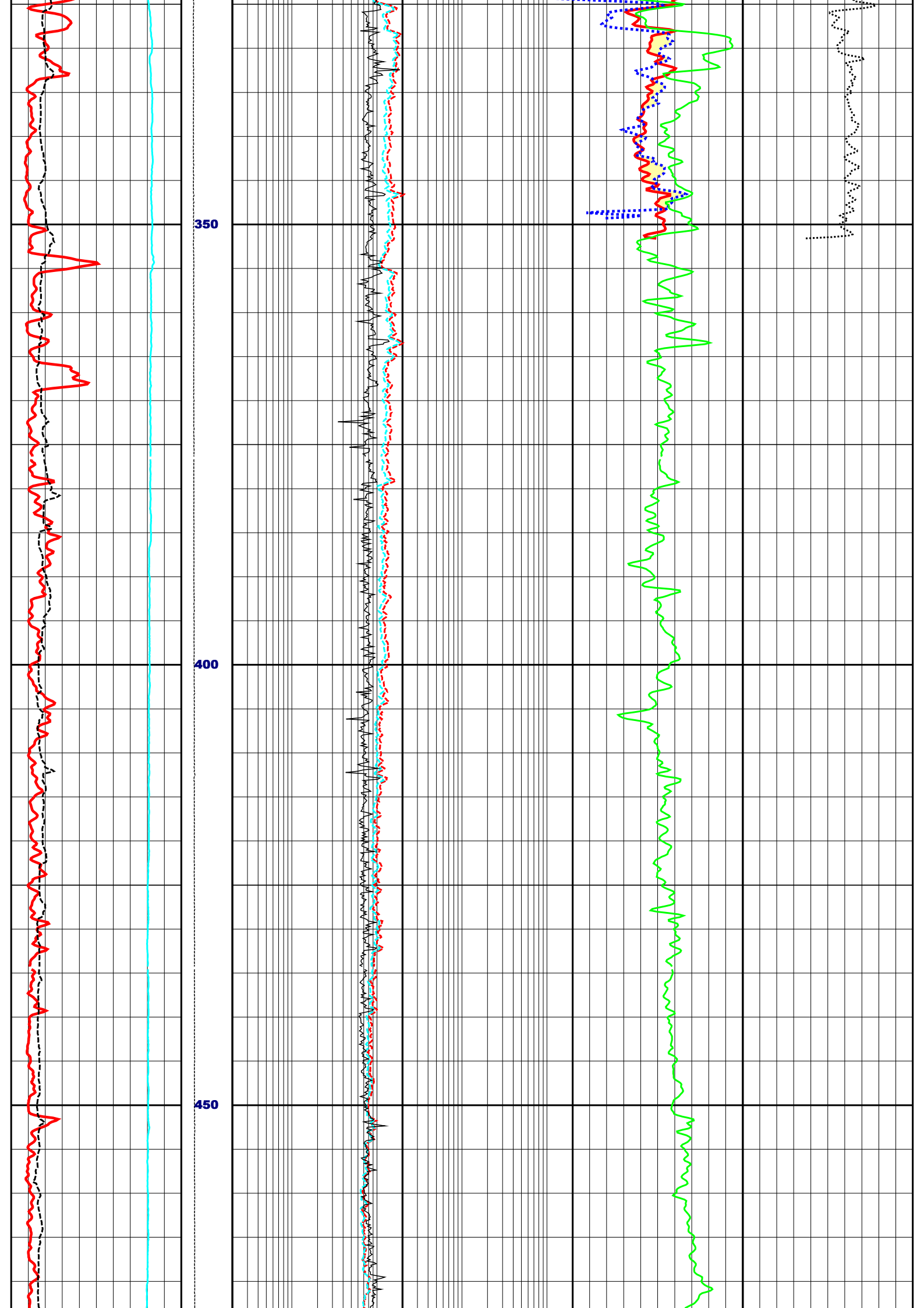
Since well log interpretations are opinions based upon inferences from well logs, we cannot and do not guarantee the correctness or accuracy of any interpretation. Therefore we shall not be liable or responsible for any loss, damage, cost or expense incurred or sustained by anyone resulting from any interpretation.

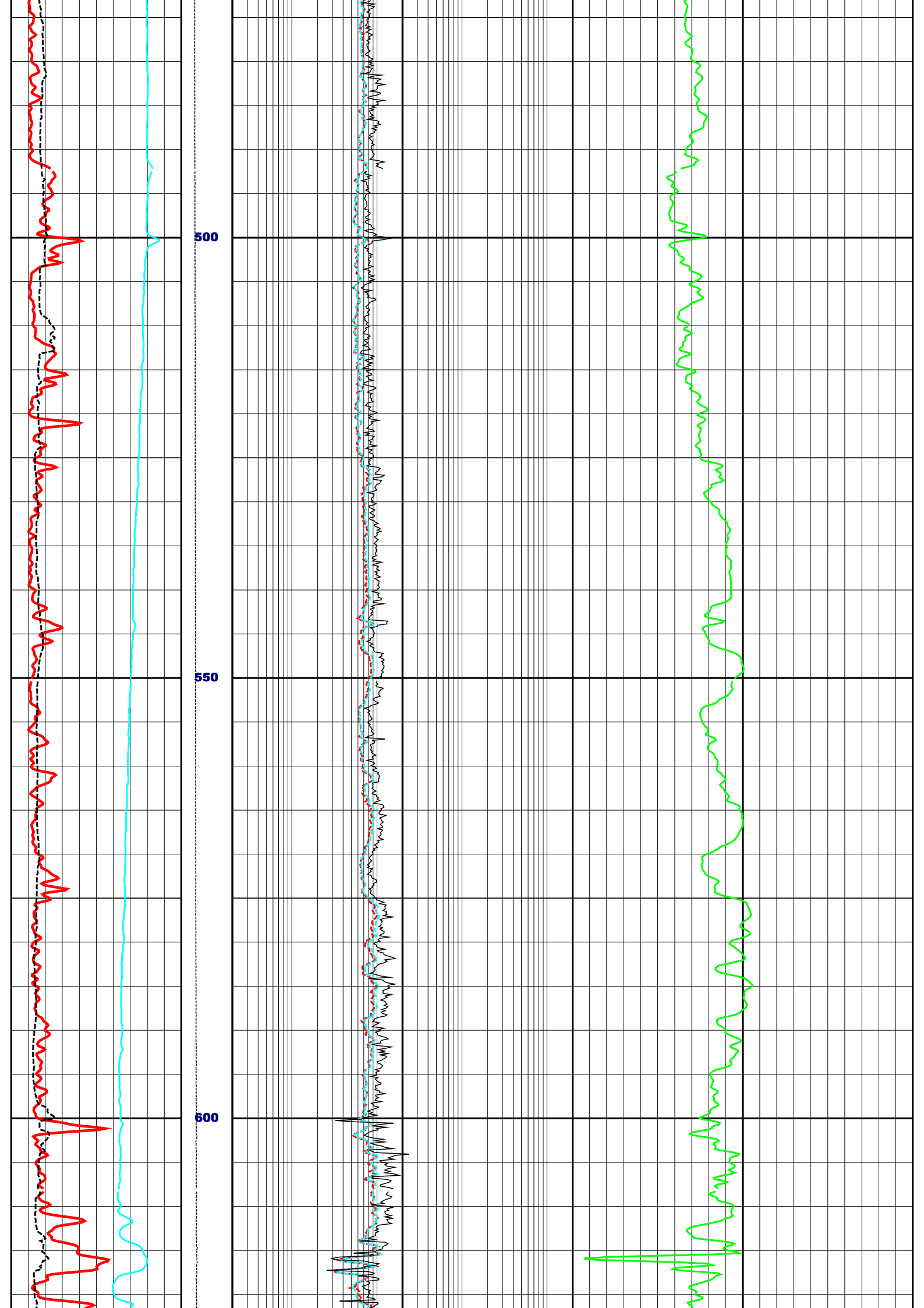
Log Description

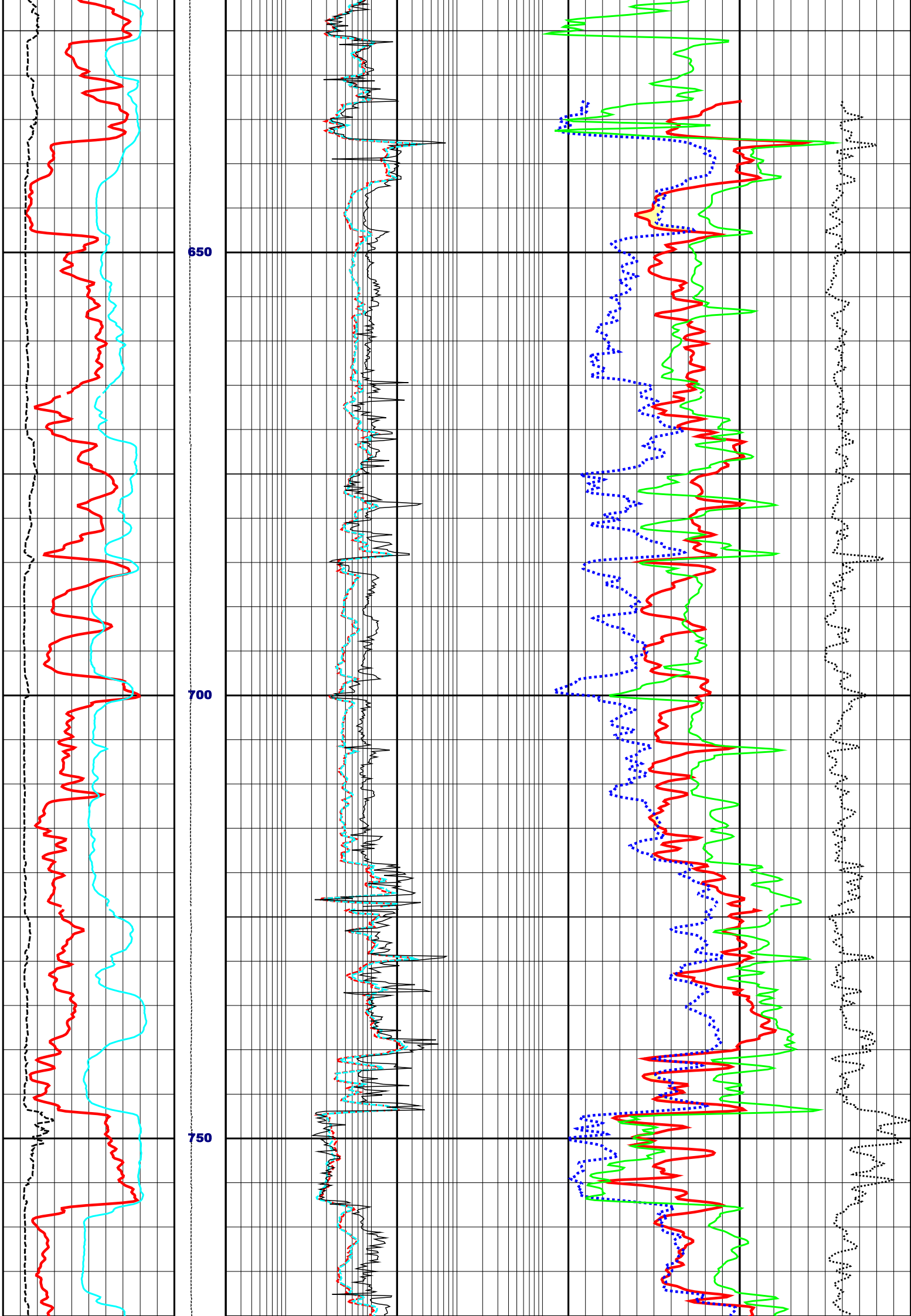
- GR Gamma Ray
- CALI Caliper
- SP Spontaneous Potential Log
- LLD Laterolog Deep Resistivity
- LLS Shallow Laterolog
- MSFL Micro Spherically Focused Log
- RHOB Compensated Formation Density
- NPHI Neutron Porosity
- DT Delta T Compressional
- DRHO Density Correction
- TENS Cable tension at surface

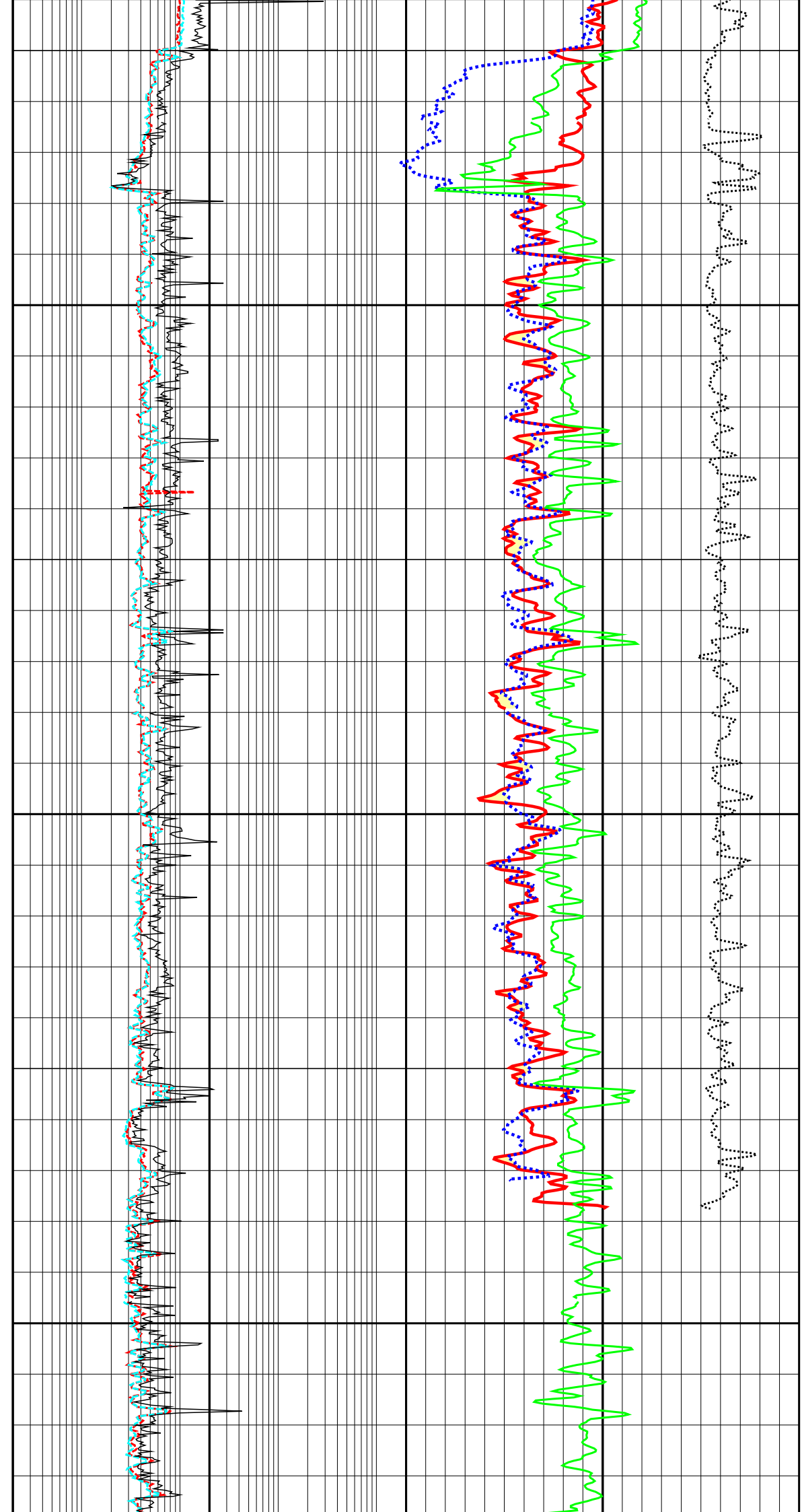
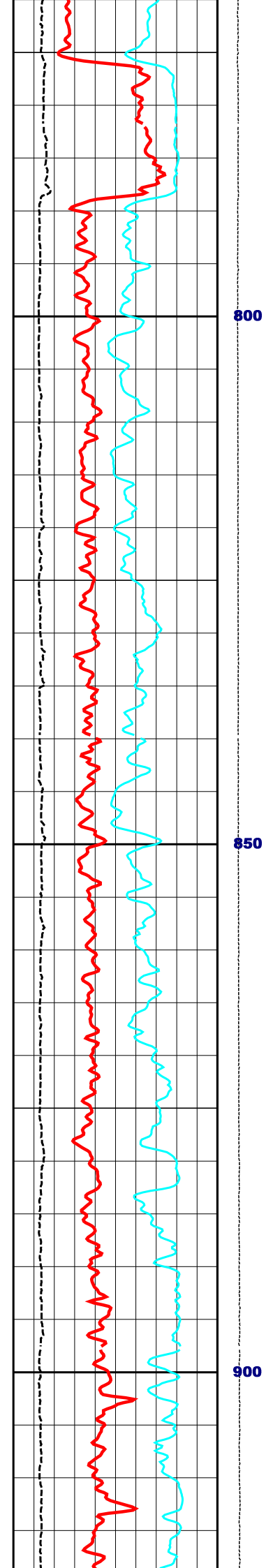


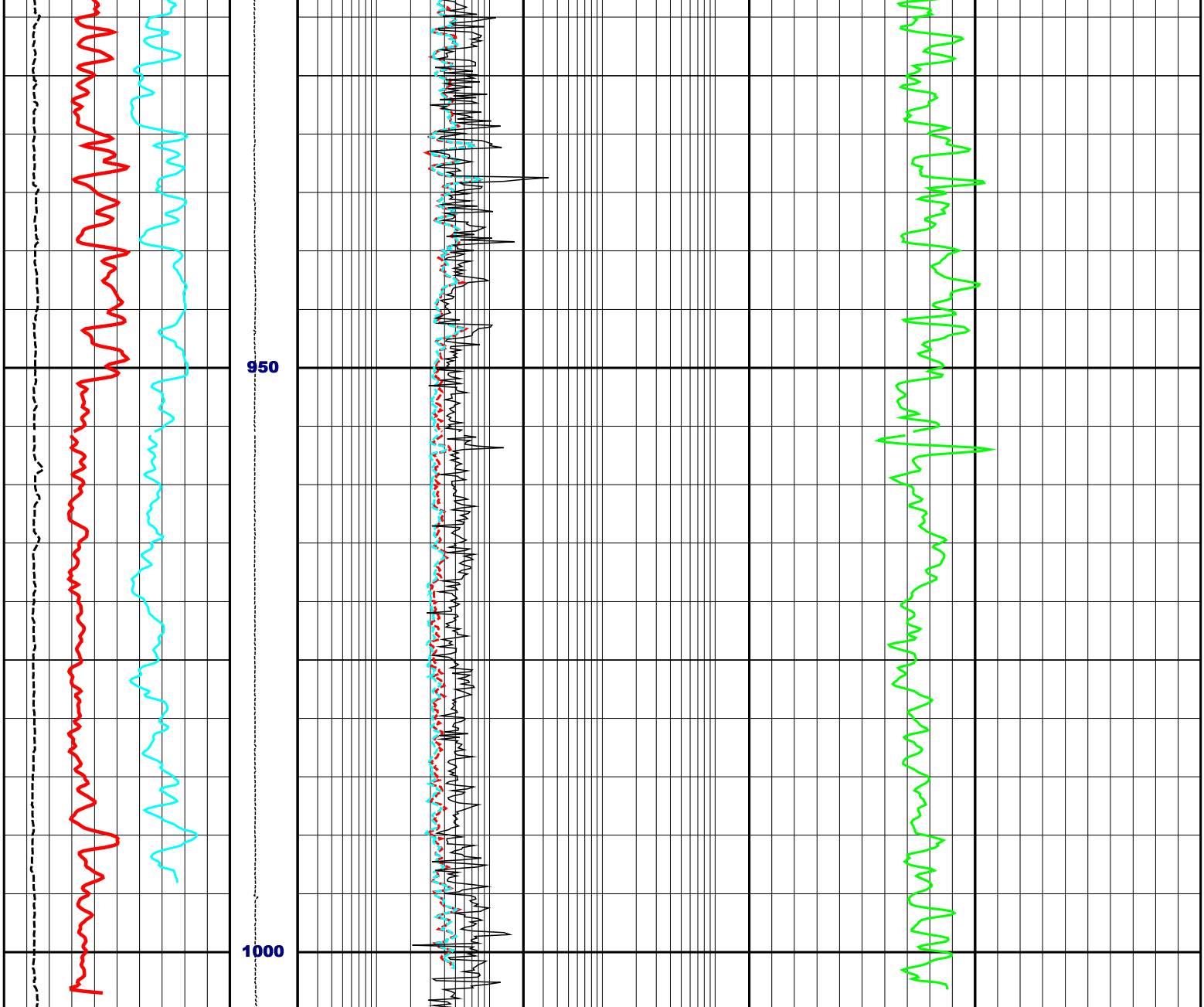












0.0	GR (API)	200.0	0.2	LLD (OHMM)	2000.0	1.95	RHOB (G/C3)	2.95	
6.0	CALI (INCH)	26.0	0.2	LLS (OHMM)	2000.0	0.45	NPHI (VV)	-0.15	
-80.0	SP (MV)	20.0	0.2	MSFL (OHMM)	2000.0	140.0	DT (US/F)	40.0	
			1:500				-0.25	DRHO (G/C3)	0.25