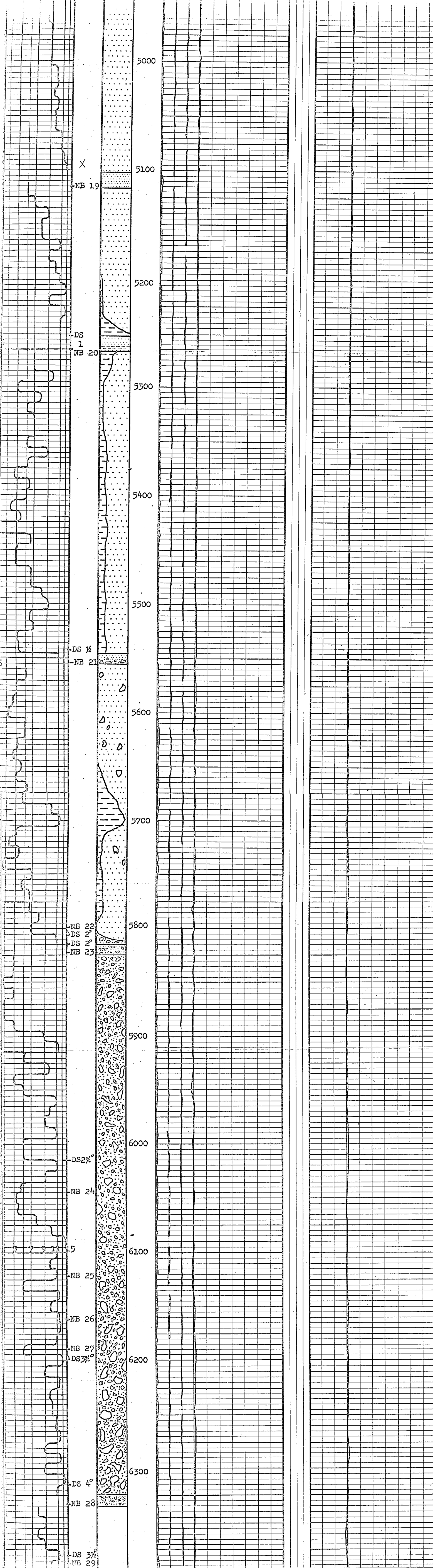


PR 65-12



5102-5117 CORE 14
REC 14'
-NB19 SEC M4L 8%

Sandstone GRAY ORANGE
CLEAR TO MILKY QUARTZ
GRAINS FINE TO MEDIUM
GRAINS SUBROUNDED TO
WELL ROUNDED

SHALE LIGHT GRAY TO
DARK GRAY RED GREEN
SANDY SILTY GLAUCOUS
IN PART

5252-5276 CORE 15
REC 10'6"
-NB 20 SEC M4L 8%

MUD DATA

W-10 V-40 F-8
PH-10.5 CK-2
TEMP 130 RMF 1.

5544-5556 CORE 16
REC 11'
NB 21 SEC M4L 8%

SANDSTONE REDDISH
WHITE ORANGE FINE
TO MEDIUM GRAINED
SUBANGULAR TO WELL
ROUNDED POORLY
CEMENTED WITH CLAY
MATRIX SCATTERED
QUARTZ AND CHERT
PEBBLES

NB 22 SEC M4L 8%

5817-5825 CORE 17
REC 5'
NB 23 REED YHGJ 8%

SANDSTONE AND
CONGLOMERATE REDDISH
BROWN FINE TO COARSE
GRAINED SUBANGULAR TO
WELL ROUNDED VERY
HARD AND TITIE WITH
RED AND GREEN SHALE
PEBBLES AND CHERT
PEBBLES

SHALE PEBBLES RED
AND GREEN SOFT AND
SILTY

QUARTZ PEBBLES

NB 24 REED YHWGJ 8%

MUD DATA

W-9.3 V-35
F-9.5 PH-9
SD-1/4 CK-2
S-1100

NB 25 REED YHGJ 8%

NB 26 REED YHGJ 8%

NB 27 SEC H10 8%

SANDSTONE AND
CONGLOMERATE BUFF
FINE TO COARSE
GRAINED HARD TITIE
WITH DARK RED QUARTZ
AND CHERT PEBBLES
ALSO RED GREEN AND
GRAY SHALE PEBBLES

CORE 18 6325-6335
REC 6'6"
NB 28 REED YHGJ 8%

NB 29 REED YGGJ 8%