


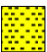









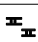
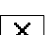


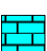
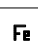

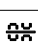






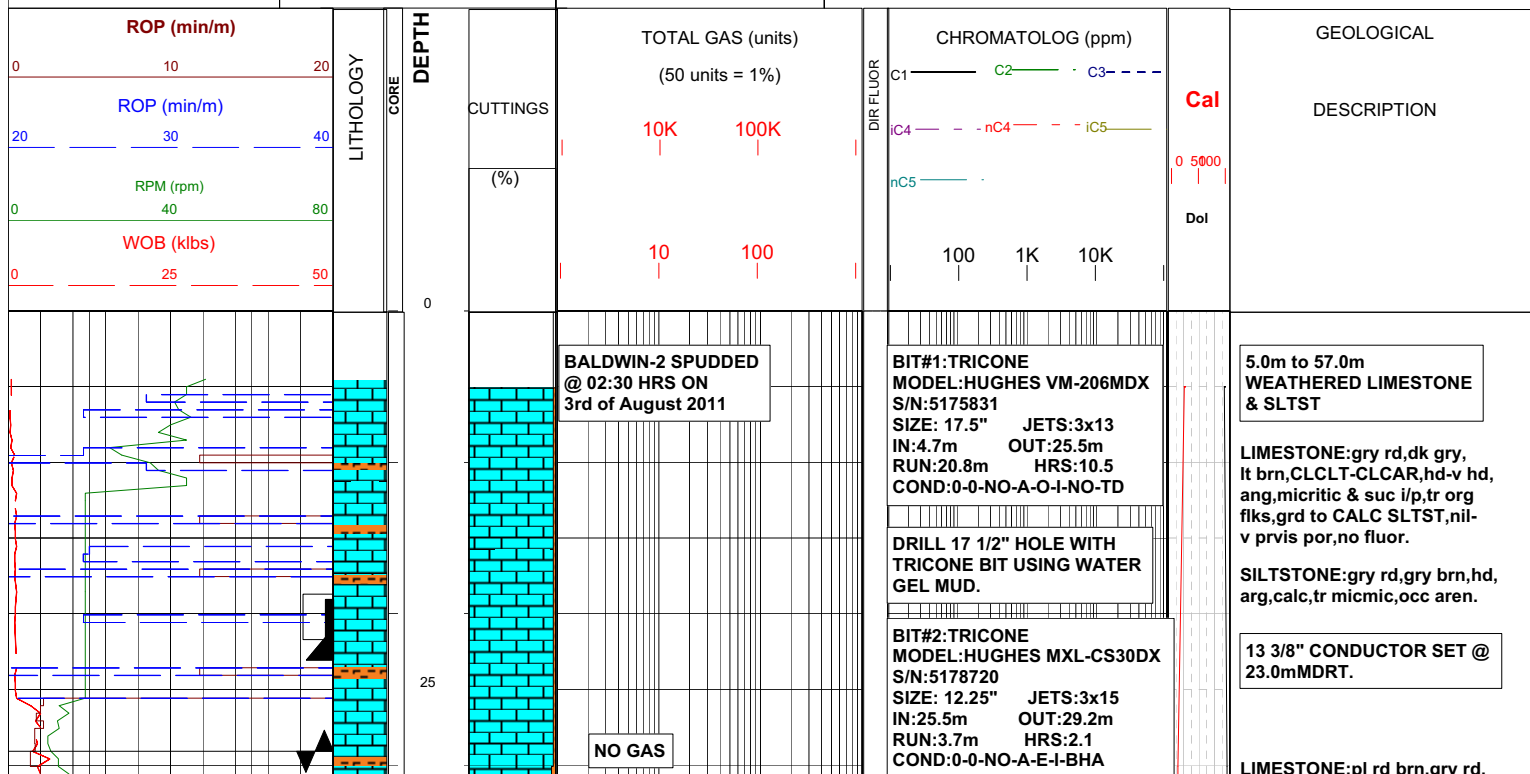
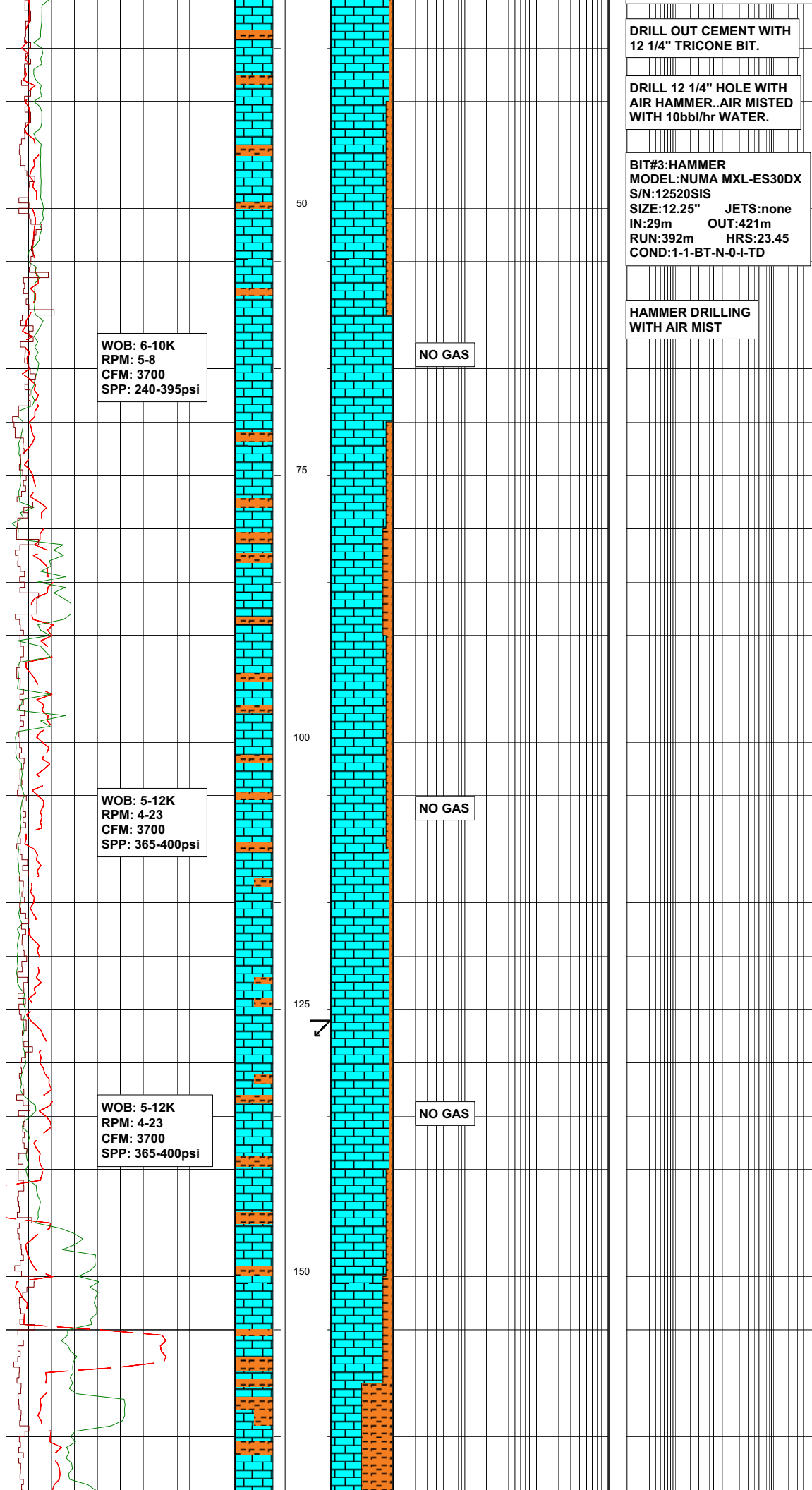




| | | | | | |
|----------------------------|-------------------------|------------------------------------|-----------------|----------------------|----------------------|
| Field : BALDWIN | Rotary Table : 352.08m | Rig : Schramm TXD 200 | Open Hole: | Cased Hole: | Loggers : A.Sullivan |
| Permit : EP-103 | Ground Level : 348.38m | Spud Date : 22/09/11 | 17 1/2": 29.0 | 13 3/8": 23.0m | K.Nikkhah |
| State : Northern Territory | Datum: GDA 94 | TD Date : 01/10/11 | 12 1/4": 421.0m | 9 5/8": 417.8m | A.Poetsch |
| Country : Australia | Lat. : 22°15'49.76" S | Total Depth : 1952.5m | 6 1/8": 1952.5m | 7": 515.1m | K. Velauthapilai |
| Scale: 1/ 500 | Long. : 136°02'19.36" E | Final Status : CASED AND SUSPENDED | | 5.5" / 4.5": 1945.7m | |

| LITHOLOGY | | ACCESSORIES | | DRILLING DATA | | ABBREVIATIONS | |
|------------------------------------------------------------------------------------|----------------------|-------------------------------------------------------------------------------------|--------------|-----------------------------------------------------------------------------------|------------------|---------------|-------------------------------|
|  | Calcareous Siltstone |  | Pyrite |  | Casing shoe | BOPD | - Barrels of Oil Per Day |
|  | Loose Sand |  | Glauconite |  | Deviation survey | BWPD | - Barrels of Water Per Day |
|  | Silty Sandstone |  | Mica |  | Dst | CG | - Connection Gas |
|  | Siltstone |  | Chert |  | Core | CO | - Circulate Out |
|  | Carb Siltstone |  | Calcareous |  | Calcmtery | COND | - Condensate |
|  | Clay-shale |  | Fossils | | | c/c | - Crush Cut |
|  | Limestone |  | Iron | | | DST | - Drill Stem Test |
|  | Dolomite |  | Breccia | | | FLOW | - Flow Rate (gal/min) |
|  | Coal-lignite |  | Argillaceous | | | GCM | - Gas Cut Mud |
|  | Granit |  | Carbonaceous | | | GCM | - Gas Cut Water |
|  | Volcanic rock |  | Foraminifera | | | GTS | - Gas To Surface |
| | | | | | | INJ | - Injection of Mist (bbls/hr) |
| | | | | | | LCM | - Lost Circulation Material |
| | | | | | | MMCFD | - Million Cubic Feet / Day |
| | | | | | | NGTS | - No Gas To Surface |
| | | | | | | NOTS | - No Oil To Surface |
| | | | | | | NR | - No Returns |
| | | | | | | OCM | - Oil Cut Mud |
| | | | | | | OG | - Over Gauge |
| | | | | | | OH | - Open Hole |
| | | | | | | OTS | - Oil To Surface |
| | | | | | | Q | - Flow Rate |
| | | | | | | REC | - Recovery |
| | | | | | | Rmf | - Resistivity mud filtrate |
| | | | | | | ROP | - Rate Of Penetration |
| | | | | | | RPM | - Revolutions Per Minute |
| | | | | | | RTSTM | - Rate Too Small To Measure |
| | | | | | | Rw | - Resistivity water |
| | | | | | | r/r | - Ring Residue |
| | | | | | | SCFM | - Standard Cubic Ft/Min (air) |
| | | | | | | SGCM | - Slightly Gas Cut Mud |
| | | | | | | SPM | - Strokes Per Minute |
| | | | | | | SPP | - Stand Pipe Pressure |
| | | | | | | SWC | - Side-Wall Core |
| | | | | | | TG | - Trip Gas |
| | | | | | | WOB | - Weight On Bit |





pl brn,yel brn,CLCSLT-CLCLT,
xln,hd-v hd,ang,suc,tr anhyd,
tr rnd qtz,mnr micmic,tr blk
min spks,nil-pr vis pr.

57.0m to 120m
LIMESTONE with interbedded
SLTST

LIMESTONE:pl brn,grysh brn,
CLCLT-CLCAR,xln,homog,hd-
v hd,blk-ang,tr brn liths,nil vis
por.

SILTSTONE:dk gry-med gry,dsty
red,mottled i/p,mod hd-v hd,ang,
calc,micmic i/p,tr vf qtz.

LIMESTONE:gry brn,lt brn,
lt olv gry,pl yel brn,hd-v hd,
xln,CLCLT-CLCAR,ooids,
spar & suc,tr pyr,nil-pr vis por.

WELL PRODUCING WATER
MIST: @ 5 bbl/hr

LIMESTONE:gry brn,lt brn,
lt olv gry,hd-v hd,xln,CLCLT
-CLCAR,tr ooid,occ suc txt,
dol i/p,tr pyr,nil-v pr vis por.

SILTSTONE:gry rd,gry brn,
frm-mod hd,ang-blky,micmic,
sli aren,wk calc.

SANDSTONE:gry pnk,lse-mod
hd,vf-occ med,rnd,mod srt,
aeolien,apar calcite cmt,tr yel
orng min,v pr vis to pr inf por,
no fluor.

LIMESTONE:pl red brn,
grysh red,pl brn,CLCSLT-
CLCLT,xln,hd v hd,ang,
suc,tr anhyd,tr rnd qtz,
mnr micmic,tr blk min spks,
nil-pr vis por.

120.0m to 190.0m
LIMESTONE with interbedded
SLTST

SURVEY @ 126m 0.75° 010T

LIMESTONE:pl yel brn,lt brn,
pl rd,lt olv gry,CLCAR-CLCLT,
xln,mod hd-v hd,ang,spar,suc,
ooids,tr styol,nil-pr vis por.

SILTSTONE:gry rd,lt gry,lt olv
gry,ang,grd to CLYST,micmic,
aren i/p,tr rnd qtz grns,calc
i/p,tr blk flks.

LIMESTONE:brnsh gry,gry red,
gry red,CLCLT-CLCAR,hd-v hd,
spry i/p and suc,occ yel brn
coated incls,rr bitum incls.

SILTSTONE:gry red,red brn,med
gry,var arg,grd to CALC SLTST.

HAMMER DRILLING
WITH AIR MIST

LIMESTONE:brnsh gry,gry red,
med dk gry i/p,pl red,CLCLT-
CLCAR,xln,spry i/p w/ yel brn
min coating,suc i/p,var arg,
grd to CALC SLTST i/p,tr lith
flks.

SILTSTONE:dom gry red,
red brn,med gry i/p,frm-hd,ang-
sbfiss i/p,micmic,com calc,occ

WOB: 6-10K
RPM: 5-8
CFM: 3700
SPP: 240-395psi

WOB: 6-10K
RPM: 15-24
CFM: 3700
SPP: 295-400psi

WOB: 6-10K
RPM: 10-25
CFM: 3700
SPP: 340-410psi

WOB: 6-11K

175

200

225

250

275

300

NO GAS

NO GAS

NO GAS

WELL PRODUCING WATER
MIST: @ 1 bbl/hr

qtz grns,grd to arg LST,mnr pyr.
rr bitum incl @ 160m

LIMESTONE:brnsh gry,gry red,
med dk gry i/p,pl red,CLCLT-
CLCAR,xln,spry i/p w/ yel brn
min coating,suc i/p,var arg,
grd to CALC SLTST i/p,tr lith
flks,tr bitum.

SURVEY @ 183m 0.5° 010T

SILTSTONE:dom gry red,red
brn,occ olv gry,med gry i/p,
frm-hd,ang-sbfiss i/p,micmic,
com calc,occ qtz grns,grd to
arg LST,mnr pyr.

190.0m to 305.0m
LIMESTONE with decreasing
SST beds & SLTST

SANDSTONE:lt olv gry,fri
-occ hd,mnr lse in smpl,vf-f,
occ med,rnd-sbrnd,sbsph,clr
qtz,calc cmt,calc mtx,bitum
stng,mnr lith flks,tr pyr,tr flour,
nil-pr vis por,no fluor.

HAMMER DRILLING
WITH AIR MIST

LIMESTONE:lt olv gry,pl brn,
dk gry,dk brn,CLCLT,mnr
CLCAR,hd-v hd,xln,homog,
ang,arg i/p,slty & bit styol,
occ ool lyrs,nil-occ v pr
vis por,dll yel solid min fluor.

WELL PRODUCING WATER
MIST @ 5 bbl/hr

SILTSTONE:med-dk gry,gry brn,
hd,ang,micmic,calc,grd to LST,
tr org lyrs.

SURVEY @ 240m 0.0° 045°T

SANDSTONE:lt-med gry,mod
hd-fri,vf-f,wl srt,calc cmt &
mtx,bit mtx i/p,v pr-pr por,
no fluor.

LIMESTONE:gry orng,pnk,lt
olv gry,gry rd,pl brn,CLCLT-
CLCAR,xln,hd-v hd,suc i/p,
ool,arg i/p,grd to SLTST,occ
bit incl, nil-occ pr vis por.

LIMESTONE:gry orng,pnk,lt
olv gry,gry rd,pl brn,CLCLT-
CLCAR,xln,hd-v hd,suc i/p,
ool,arg i/p,lse crs spar calc,
grd to SLTST,occ bit incl, nil-
occ pr vis por.

LIMESTONE:brn blk,med-
dk gry,gry brn,hd-v hd,ang
CLCLT,CLCAR i/p,xln,mnr ool,
spar w/ lse crs calc crystals,
mnr styol,arg i/p,nil-occ pr
vis por.

305.0m to 350.0m
DOLOMITE with interbedded
LST,Mnr SLTST & SST

LIMESTONE:brn blk,med-dk gry,
gry brn,hd-v hd,ang,CLCLT,dol
i/p,CLCAR i/p,xln,mnr ool,
spar w/ lse crs calc crystals,
mnr styol,arg i/p,no-occ pr
vis por.

SILTSTONE:med-dk gry,dk gry
brn,hd-frm,blk-ang,micmic,
grd to CLYST,var calc.

SURVEY @ 309m 0.5° 010T

RPM: 10-25
CFM: 3700
SPP: 370-440psi

WOB: 7-11K
RPM: 5-25
CFM: 3700
SPP: 405-480psi

WOB: 6-11K
RPM: 10-38
CFM: 3700
SPP: 370-440psi

NO GAS

NO GAS

NO GAS

NO GAS

BIT#4:TRICONE
MODEL:HUGHES MXL-DS44CDX
S/N:5191787
SIZE: 8.5" JETS:3x20
IN:421m OUT:950m
RUN:529m HRS:41.27
COND:3-1-CT-C-4-I-BT

9 5/8" SURFACE CASING SET
@ 417.8mMDRT.

TOP HAGEN MEMBER:
429.0mMDRT(-73.8m)

DOLOMITE:pl brn-brn gry,
CLCLT-CLCAR,xln,suc i/p,hd-
v hd,ang,mnr vugs w/ calc fill,
mnr org flks,arg & carb lyrs,tr
bitum,nil-v pr vis por,no fluor.

SANDSTONE:(tr)v pl brn,v lt
olv gry,hd-fri,vf,wl srt,sbrnd,
mnr f-rr med qtz,var calc cmt
& mtx,occ bitum,blk min flks,v pr
-occ fr vis por,no fluor.

LIMESTONE:med lt gry,lt olv
gry,med-dk gry,com lse spar
calc,fri-lse xln,w/ mnr bitum
coated,dol i/p,

DOLOMITE:lt gry-lt olv gry,
CLCLT,xln,v hd-fri,ang,suc,mnr
styo,rr ooids,mnr vugs,nil-pr
vis por,dll yel min fluor.

com lse spar calcite,occ bitum
coated grs.

LIMESTONE:as above,dol i/p.

350.0m to 405.0m
DOLOMITE with interbedded
LST, Mnr SST beds

LIMESTONE:med lt gry-lt olv
gry,med gry i/p,CLCLT,xln,
micritic txt i/p,v hd-occ fri,
ang-crmby,occ suc txt,arg i/p,
dol i/p,rr ooids,v pr vis por i/p.

SURVEY @ 366m 0.5° 035T

DOLOMITE:wht,hd-v hd,ang,
spr frac fill & replacement
of calc,mnr assoc fluorite,
agate,interstit bitum.

DOLOMITE:pl brn,hd,ang,suc,
calc filled vugs,tr bitum,nil-
mnr pr vis por,no fluor,discont
anhyd strm & lyrs.

SILTSTONE:dk gry-brn blk,
hd-mod hd,ang,tr pyr.

LIMESTONE:med gry-grysh brn,
CLCLT,xln,hd-v hd,dol,mnr pyr,
nil vis por.

405.0m to 429.0m
Dolomite with thin SST beds

SANDSTONE:pl yelsh brn,mod
hd-hd,v f grns,wl srt,sbrd,sbsph,
calc cmt & mtx,blk min spks,
dissem pyr,mnr slty lyrs,nil-
v pr vis por,no fluor.

DOLOMITE:pl yelsh brn,pl brn,
brn gry,DOLoar,hd w/ com lse
spr dol grns,mnr bitum coated
grns,tr dead oil stng,nil-pr inf
por,yel solid min fluor,no direct
hydcrbn fluor,no cut fluor.

DOLOMITE:lt olv gry-lt brn,
DOLOSLT,xln,mod hd-hd,brit,
ang,tr styol,tr min flks,nil-v
pr vis por,dll yel solid min fluor.

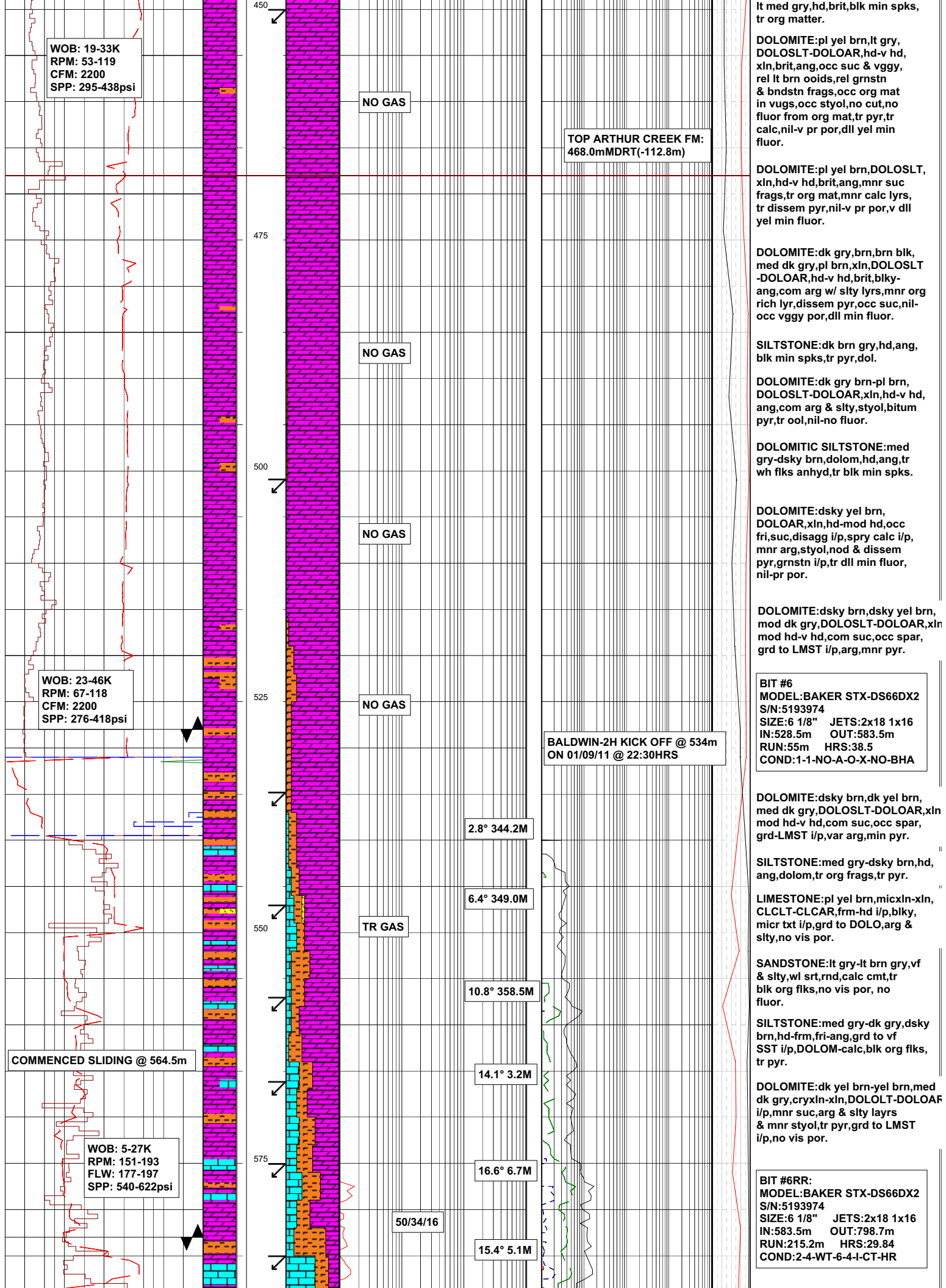
DOLOMITE:pl brn-pl yel brn,
DOLOLT-DOLOAR,xln,mod hd-
v hd,rr fri,brit,suc i/p,tr
styo,ls,bndstn i/p,tr pyr,nil
-occ pr vis por,mnr vgy por,
dll yel min fluor.

429.0m to 468.0m
DOLOMITE w/ tr Calc SLTST

DOLOMITE:pl yel brn,lt olv
gry,brn blk-gry blk i/p,xln,
DOLOLT-DOLOAR,mod hd-hd,
suc & fri i/p,tr spr calc,tr qtz
grns,rel ooids,rel grnstrn,mnr
aren lyr,tr bitum mat,nil-pos
fr vgy por,dll yel min fluor.

468.0m to 555.0m
DOLOMITE w/ Siltstone beds

CALCAREOUS SILTSTONE:



It med gry,hd,brit,blk min spks, tr org matter.

DOLOMITE:pl yel brn,lt gry, DOLOSLT-DOLOAR,hd-v hd, xln,brit,ang,occ suc & vggy, rel lt brn ooids,rel grnstrn & bndstn frags,occ org mat in vugs,occ stylol,no cut,no fluor from org mat,tr pyr,tr calc,nil-v pr por,dll yel min fluor.

DOLOMITE:pl yel brn,DOLOSLT, xln,hd-v hd,brit,ang,mnr suc frags,tr org mat,mnr calc lyrs, tr dissem pyr,nil-v pr por,v dll yel min fluor.

DOLOMITE:dk gry,brn,brn blk, med dk gry,pl brn,xln,DOLOSLT -DOLOAR,hd-v hd,brit,blk-ang,com arg w/ slty lyrs,mnr org rich lyr,dissem pyr,occ suc,nil-occ vggy por,dll min fluor.

SILTSTONE:dk brn gry,hd,ang, blk min spks,tr pyr,dol.

DOLOMITE:dk gry brn-pl brn, DOLOSLT-DOLOAR,xln,hd-v hd, ang,com arg & slty,stylol,bitum pyr,tr ool,nil-no fluor.

DOLOMITIC SILTSTONE:med gry-dsky brn,dolom,hd,ang,tr wh flks anhyd,tr blk min spks.

DOLOMITE:dsky yel brn, DOLOAR,xln,hd-mod hd,occ fri,suc,disagg i/p,spry calc i/p, mnr arg,stylol,nod & dissem pyr,grnstrn i/p,tr dll min fluor, nil-pr por.

DOLOMITE:dsky brn,dsky yel brn, mod dk gry,DOLOSLT-DOLOAR,xln mod hd-v hd,com suc,occ spar, grd to LMST i/p,arg,mnr pyr.

BIT #6
MODEL:BAKER STX-DS66DX2
S/N:5193974
SIZE:6 1/8" JETS:2x18 1x16
IN:528.5m OUT:583.5m
RUN:55m HRS:38.5
COND:1-1-NO-A-O-X-NO-BHA

DOLOMITE:dsky brn,dk yel brn, med dk gry,DOLOSLT-DOLOAR,xln mod hd-v hd,com suc,occ spar, grd-LMST i/p,var arg,min pyr.

SILTSTONE:med gry-dsky brn,hd, ang,dolom,tr org frags,tr pyr.

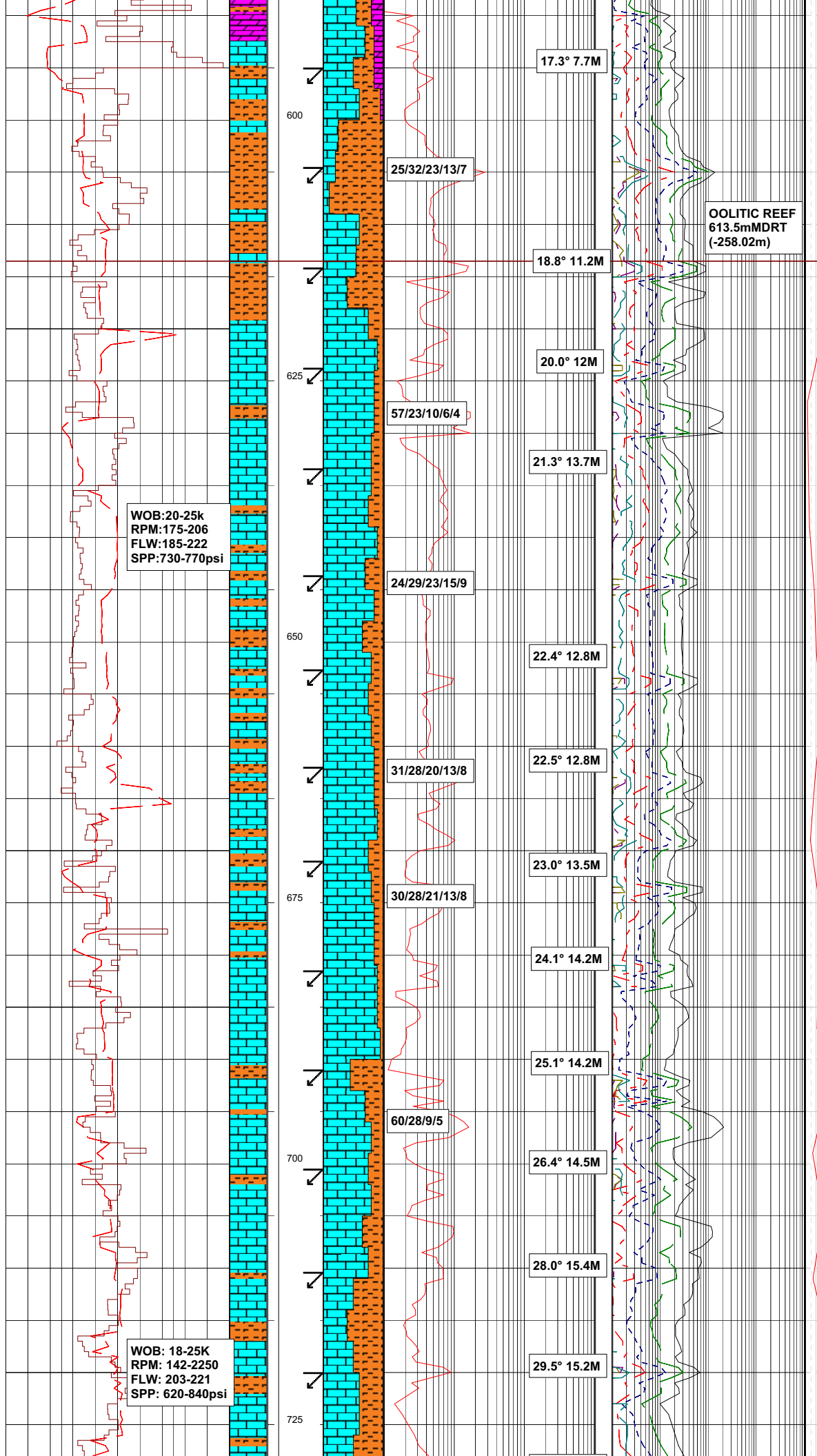
LIMESTONE:pl yel brn,micxln-xln, CLCLT-CLCAR,frm-hd i/p,blkly, micr txt i/p,grd to DOLO,arg & slty,no vis por.

SANDSTONE:lt gry-lt brn gry,vf & slty,wl srt,rd,calc cmt,tr blk org flks,no vis por, no fluor.

SILTSTONE:med gry-dk gry,dsky brn,hd-frm,fri-ang,grd to vf SST i/p,DOLOM-calc,blk org flks, tr pyr.

DOLOMITE:dk yel brn-yel brn,med dk gry,cryxln-xln,DOLOLT-DOLOAF i/p,mnr suc,arg & slty layrs & mnr stylol,tr pyr,grd to LMST i/p,no vis por.

BIT #6RR:
MODEL:BAKER STX-DS66DX2
S/N:5193974
SIZE:6 1/8" JETS:2x18 1x16
IN:583.5m OUT:798.7m
RUN:215.2m HRS:29.84
COND:2-4-WT-6-4-I-CT-HR



SILTSTONE: med gry-blk, occ med lt gry, hd-mod hd, fri-ang, grd-vf SST i/p, calc-DOLOLIT, blk org frag, disem & nod pyr, tr micmic.

LIMESTONE: yel gry-lt olv gry, dsky brn, micr xln-xln, CLCLT-com CLCAR sft frm, occ mod hd, blk, suc-micr txt i/p, grd to DOLOM, arg & silty i/p, no vis por.

SILTSTONE: med gry-blk, occ med lt gry, frm-mod hd, hd i/p, ang-occ fri, aren i/p, calc to dolomitic, blk org frag, disem & nod pyr, tr micmic.

621-627 NO DIRECT FLUOR TR DIM SPTTD THN RNG YEL RES RNG AFTER CRSH

LIMESTONE: dsky yel brn, dk gry brn, mot i/p, CLSLT-CLCAR i/p, xln frm-mod hd i/p, ang, brit i/p, occ dolomitic, var arg, grd to calc SLTST, tr pyr nod, tr min flks, nil-v pr vis por.

SILTSTONE: med gry-gry blk, dsky b hd-mod hd, ang, occ aren, var calc, occ f lam w/ LMST, blk org frag, dissem & nod pyr, tr micmic.

639-642 NO DIRECT FLUOR TR V THN DIM RES RNG RES AFTER CRSH CUT.

LIMESTONE: dsky yel brn, yel gry-pl brn, mot, CLCLT i/p, xln, frm-mod hd i/p, ang-brit i/p, suc-occ spar, tr silica frac & vug fill, occ pl grn min, mnr bit standvugs, rel grnd txt, ool i/p, styol & org rich silty patings, occ dol, tr nod pyr, tr min flks, nil-v pr vis por.

LIMESTONE: dsky yel brn, yel gry-pl brn, CLCLT-CLCAR i/p, xln-cryp xln, frm-v hd, fri-ang, arg i/p & grd to SLTS, blk min spks & occ pyrmsuc i/p, no fluor.

SILTSTONE: dsky yel brn-brn blk, hr, ang, calc, frm-mod hd, blkky, dissem pyr, micmic, grd to LMST, chrtly i/p.

LIMESTONE: pl brn-dsky yel brn, xln, CLCSLT, hd-mod hd, ang-crmblly micr txt i/p, arg, styol, pyr, rr asic yel min, no vis por.

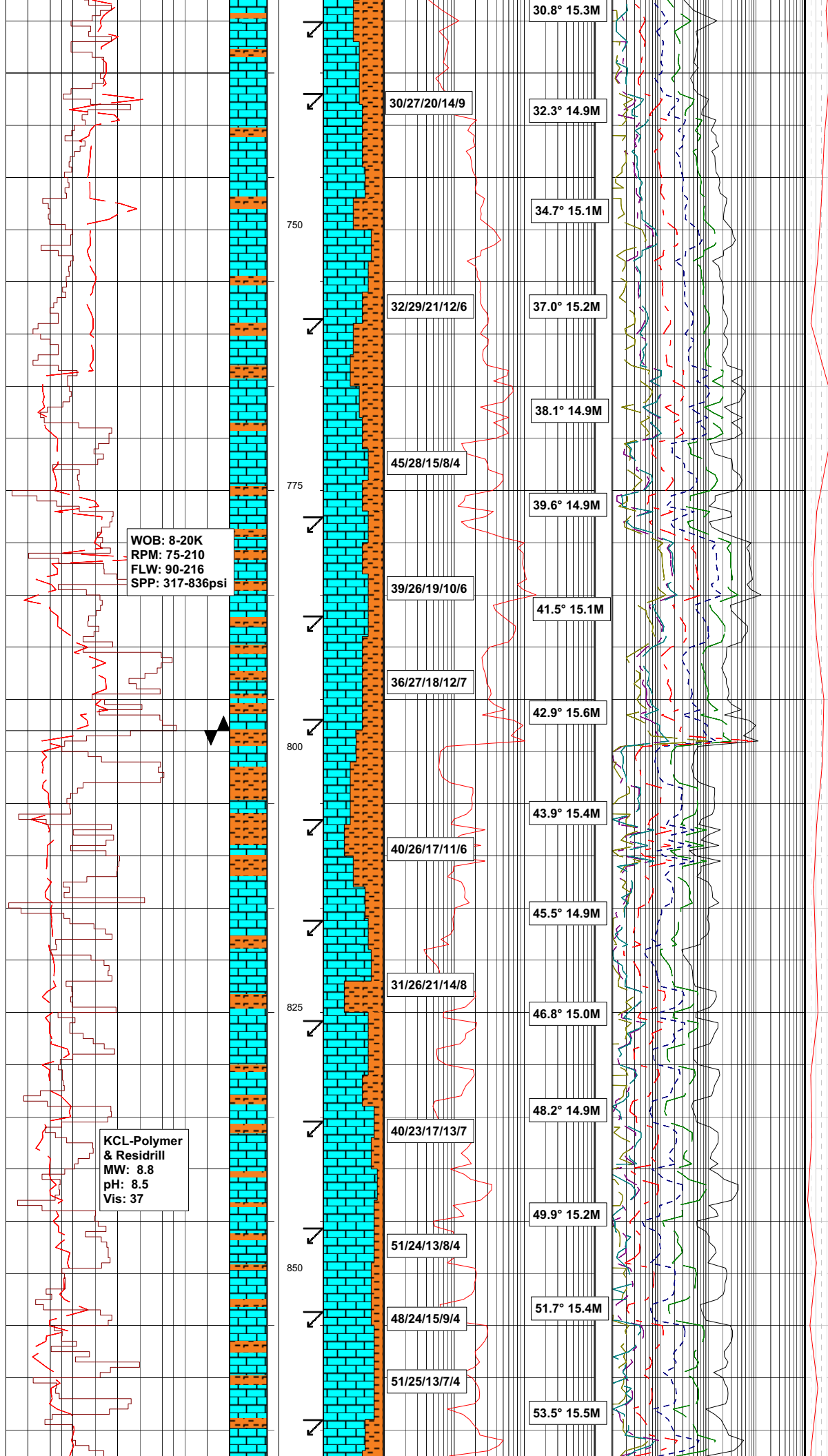
LIMESTONE: dk yel brn-pl brn, CLCSLT-CLCAR, xln, v hd-frm, ang-crmblly, suc, tr pyr, occ anhyd mtx, no-occ pr vis por, no fluor.

SILTSTONE: med gry-brn blk, com hd, ang, var calc, v frm-mod hd i/p, & blk, dissem pyr, micmic, grd to arg LMST, some v hd brn blk chrtly frag & layers, some thn anhyd layers & incls.

LIMESTONE: lt olv gry-pl brn-brn blk CLSLT-CLCAR, xln-crypto xln i/p, hd frm, v hd i/p, ang-fri, com suc, occ micr txt, tr pyr, com arg, occ anhyd mtx, no-occ pr vis por, no fluor.

SILTSTONE: med gry-brn blk, frm-hc v hd i/p, and-blky, var calc, dissem pyr, micmic, grd to arg LMST, some v hd brn blk chrtly frag & layers, some thn anhyd layers & incls.

LIMESTONE: dsky yel brn-brn blk, occ pl brn, CLSLT, xln, frm-mod hd, ang-fri-brit i/p, com suc, occ micr txt, tr pyr, occ grd to SLTST, occ anhyd mtx, no-pr vis por, no fluor.



WOB: 8-20K
RPM: 75-210
FLW: 90-216
SPP: 317-836psi

KCL-Polymer
& Residrill
MW: 8.8
pH: 8.5
Vis: 37

30/27/20/14/9

30.8° 15.3M

32/29/21/12/6

32.3° 14.9M

34.7° 15.1M

45/28/15/8/4

37.0° 15.2M

38.1° 14.9M

39/26/19/10/6

39.6° 14.9M

41.5° 15.1M

36/27/18/12/7

42.9° 15.6M

40/26/17/11/6

43.9° 15.4M

45.5° 14.9M

31/26/21/14/8

46.8° 15.0M

48.2° 14.9M

40/23/17/13/7

49.9° 15.2M

51/24/13/8/4

51.7° 15.4M

48/24/15/9/4

53.5° 15.5M

51/25/13/7/4

SILTSTONE:med gry-brn blk,frm-hd
v hd i/p,ang-blky,calc,dissm pyr,
micmic,grd to arg LMST,org spks,
some thnandy layers & incl.

LIMESTONE:olv gry-dsky yel brn,
CLCLT,xln-occ crypto xln,frm-mod
hd,v hdi/p,ang-com suc,occ micr
txt,tr pyr,occ anhyd mtz,no vis
por.

LIMESTONE:gry brn-dsky yel brn,
CLCSLT grd to CLCLT,xln,hd-fri,
ang-crmby,rel grnsth,fossfer
i/p,grd to SLTST,occ DOLOM,no-
v pr vis por,no fluor.

SILTSTONE:med gry-dsky yel brn,
brn blk,v hd-mod hd,ang-blky,
var calc,grd to LMST,f interlam
w/ tr foss frags,micmic,org rich
lay,tr dissem pyr,no vis por.

LIMESTONE:gry brn-olv gry,med
gry,CLCSLT,xln,frm-hd,crmby-
ang,micr txt,foss frags,min
anhyd,v pr vis por,no fluor.

LIMESTONE:gry brn-olv gry,brn blk
CLCSLT,xln,frm-hd,crmby-ang,mic
txt,rel grnsth txt,com foss frags,
com arg,grd to SLTST,v pr-nil vis
por,nil fluor.

SILTSTONE:brn blk-dk gry brn,dk
gry-hd-frm,blky-occ subfiss,
calc,tr micmic,grd to LMST,mnr
foss frag.

BIT #7:HUGHES
MODEL:STX-DS50DX
S/N:5192233
SIZE: 6 1/8" JETS:2x18,1x16
IN:798.7m OUT:971.7m
RUN:173 HRS:28.7
COND:3-3-WT-6-4-2-CT-DMF

LIMESTONE:olv gry-olv blk-brn blk
CLSLT,xln,cryxln i/p,frm-hd i/p,
crmby-ang,micr txt,rel grnsth
& boundsth txt i/p,com foss frags,
freq arg & grd to SLTS,v pr-
nil vir por.

LIMESTONE:olv gry,olv blk,CLSLT,
xln-cryxln,frm-hd,ang-crmby,rel
grnsth,foss frag,tr chrt,arg &
grd to SLTST,v pr-nil vis por.

SILTSTONE:med dk gry,brn blk,gry
brn,mod hd-hd,blky-ang,var calc,
inter lam with LMST

LIMESTONE:pl yel brn,gry brn,
med gry,CLCLT-CLCSLT,xln,v hd-
frm,ang-crmby,micr txt,occ suc,
rel grnsth,occ styol,occ foss
frags,arg grd to SLTST,nil-v pr
por.

LIMESTONE:dk brn,brn blk,grysh
blk,grysh brn,pl brn,mott brn,
CLCLT-CLCAR,xln,mod hd-hd,ang-
crmby,occ suc,tr spar calc,
dolom i/p,arg grd to SLTST,foss
frags,no vis por.

SILTSTONE:brn blk,med dk gry,
gry blk,hd-mod hd,blky-ang,
calc,tr micmic,occ pyr.

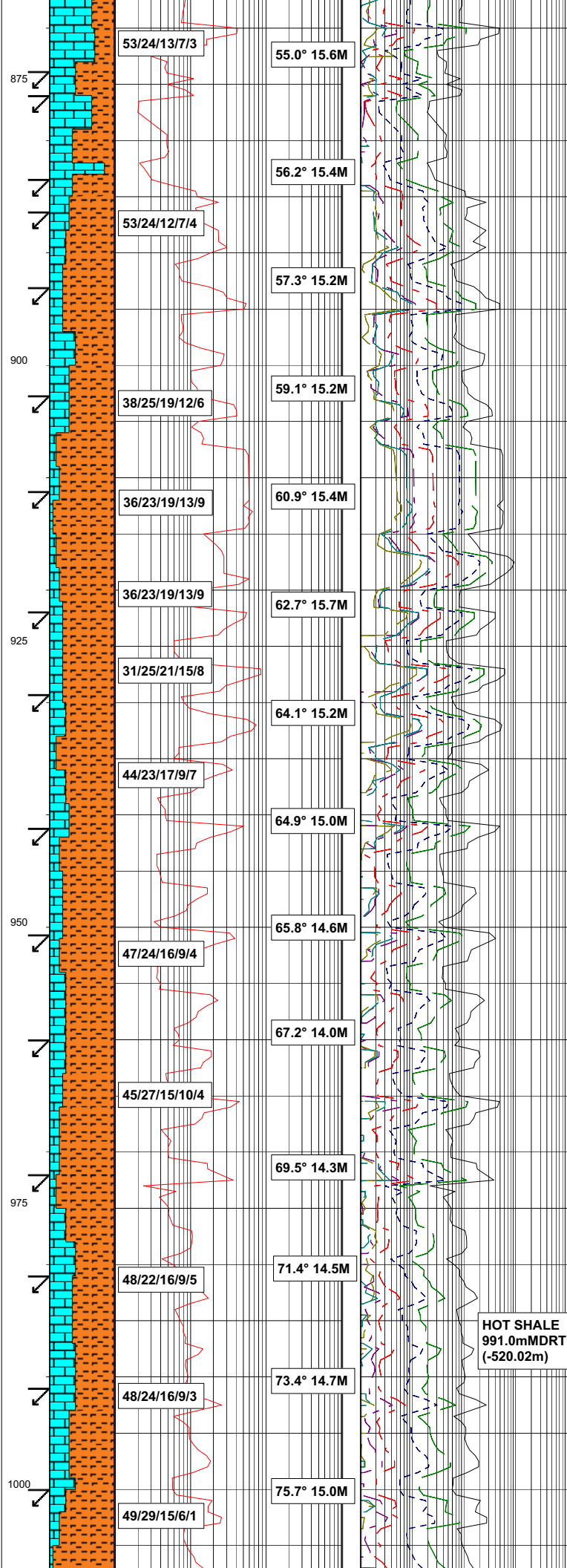
LIMESTONE:brn blk,dsky yel brn,
pl brn,CLCLT-CLCAR,xln,v hd-
frm,ang-blkv,micr txt i/p.

WOB: 6-29K
RPM: 127-198
FLW: 145-221
SPP: 489-881psi

WOB: 8-16K
RPM: 143-196
FLW: 176-218
SPP: 694-927psi

WOB: 8.9-23K
RPM: 158-222
FLW: 175-254
SPP: 890-1232 psi

KCL-Polymer
& Residrill
MW: 8.8



com arg grd to SLTST,blk org
mat,occ grnstrn & boundstrn txt,
trfoss frags,no vis por.

SILTSTONE:brn blk-med dk gry,
gry blk,hd-mod hd,blky-ang,var
calc,tr micmic,tr v f qtz,occ
nod pyr.

LIMESTONE:gry ben-brn blk,dsky
yel brn,CLCLT-CLCAR,xln-cryxln,
hd-frm,ang-crmby,micr i/p,com
arg & grd to SLTST,tr org rich
layers,tr pyr,no vis por.

SILTSTONE:med dk gry-gry blk,
hd-mod hd,v hd i/p,blky-ang,
com calc & grd to LMST,micmic,
occ nod pyr.

LIMESTONE:olv gry-dk gry blk,
CLSLT-CLCAR,xln-cryxln,frm-mod
hd,ang-crmby,micr i/p,com arg
& grd to SLTST,dol i/p,tr foss
frag,no vis por.

SILTSTONE:med gry-pred gry blk,
hd-v hd,ang-blky,rr foss,arg
grd to LMST i/p,var calc,tr
nod pyr.

LIMESTONE:dsky yel brn-olv blk,
CLCLT-CLCAR,xln,frm-mod hd,ang
grnstrn,com arg grd to SLTST,foss
frag,no vis por.

LIMESTONE:med gry,brn gry,mott,
CLCLT,xln,frm-mod hd,ang-crmby,
micr txt,arg grd to SLTST,tr
anhyd mtx,no vis por.

SILTSTONE:med dk gry-brn blk,
mod hd-hd,ang-occ sbply,var
calc,grd to LMST,micmic layers,
tr pyr.

LIMESTONE:grysh brn,dsky yel brn
brnsh blk,CLCLT-CLCLT,xln,hd-frm
ang-crmby,micr txt i/p,com arg
grd to SLTST,rr styal,no vis por.

SILTSTONE:grysh blk-brnsh blk,
mod hd-hd,ang-blky,calc i/p,
grd to LMST,micmic,tr dissem
& nod pyr.

LIMESTONE:grysh brn,dsky yel
brn,brnsh blk,CLCLT-CLCLT,xln,
hd-frm,ang-crmby,micr txt i/p,
com arggrd to SLTST,rr styal,no
vis por.

SILTSTONE:grysh blk-brn blk,
med gry,hd-v hd,ang,blky,calc,
grd to LMST,mnr micmic,dolom
i/p,tr dissem pyr.

BIT#8:PDC DP406
S/N:7025543
JETS:5x11,2x12
IN:971.7m OUT:1243m
RUN:271.3m HRS:28.5
COND:0-0-NO-A-X-I-NO-BHA

LIMESTONE:gry brn-med gry,dk
gry,mott,CLCSLT,xln,mod hd,blky,
micr txt i/p,com silty & arg grd
to SLTST,f interbed w/ SLTST,
dolom i/p,occ ool frags,some
suc aggs,no vis por.

SILTSTONE:brnsh blk-grysh blk,
mod hd-v hd i/p,blky-ang,occ
fiss,occ calc micro veins,
dissem pyr,occ f interlams w/
LMST.

LIMESTONE:mott lt-med gry,dk
gry-grysh blk,CLCSLT-CLCAR,xln
i/p,frm-occ mod hd,fri i/p,blky,

pH: 8.5
vis: 37

WOB: 8.7-21K
RPM: 128-200
FLW: 136-216
SPP: 793-1162psi

1025

1050

1075

1100

1125

53/29/14/4/tr

78.1° 15.7M

48/28/15/6/3

80.1° 16.0M

48/28/12/4/tr

81.9° 16.4M

83.7° 16.2M

49/28/14/6/3

85.9° 16.2M

49/29/14/6/2

87.6° 16.0M

53/28/13/4/2

89.2° 15.8M

57/27/12/3/1

90.2° 15.8M

57/28/11/3/1

90.7° 15.8M

56/28/11/3/2

90.5° 15.7M

90.4° 13.8M

80/16/3/1/tr

90.6° 12.9M

81/16/3/tr/tr

91.6° 12.8M

81/15/3/1/tr

92.7° 12.7M

83/14/2/tr/tr

92.9° 12.6M

occ micr txt,com slty & arg grd to SLTST,f interbed w/ SLTST, dolom i/p w/ some suc aggs,no vis por.

SILTSTONE:brn-gry blk,hd-v hd, ang-blky,variably calc,com nod & disem pyr,mnr calcite micro veins,some calcite xln re-growth,com interlam w/ LMST.

LIMESTONE:mot lt-med gry w/ dk gry,gry blk,CLSLT,occ xln i/p, frm-occ mod hd,com fri,blky,occ micrtext,v com slty & arg & grd to SLTST,finterbedded w/ SLTST, some suc agg,no vis por.

SILTSTONE:med dk gry-brn blk, hd-vhd,ang-blky,sl calc,mnr calcite re-growth,com nod & disem pyr,tr mnr calcite micro veins.

SANDSTONE:med lt gry,brn blk,brn blk,vf,hd-mod hd,ang-blky i/p,sbrnd sbang,w/ srt,calc cmt,slty,m/m,tr disem pyr,grd to SLTST,no vis por fluor.

LIMESTONE:med gry-med dk gry,gr brn i/p,CLCAR-CLSLT,xln,mod hd-frm,ool i/p,mnr suc tex,tr prple min,arg & grd to SLTST,nil-occ pr vis por,no fluor.

SILTSTONE:gry blk-brn blk,frm-hd, blky-ang,com disem pyr,occ calc incls,f LMST partings i/p,tr vf qtz grns.

LIMESTONE:pl brn-brn gry,brn blk, CLSLT grd to CLCAR i/p,xln,fri-mod hd,suc i/p,rel ool,possible brn stns,tr oil blebs @ shkers, v pr vis por,possible pr inf por,no direct fluor.

SILTSTONE:gry blk-brn blk,mod hd-hd,blky-ang,mnr sub-platy, calc i/p,disem pyr,tr v f qtz, mnr calcite incls.

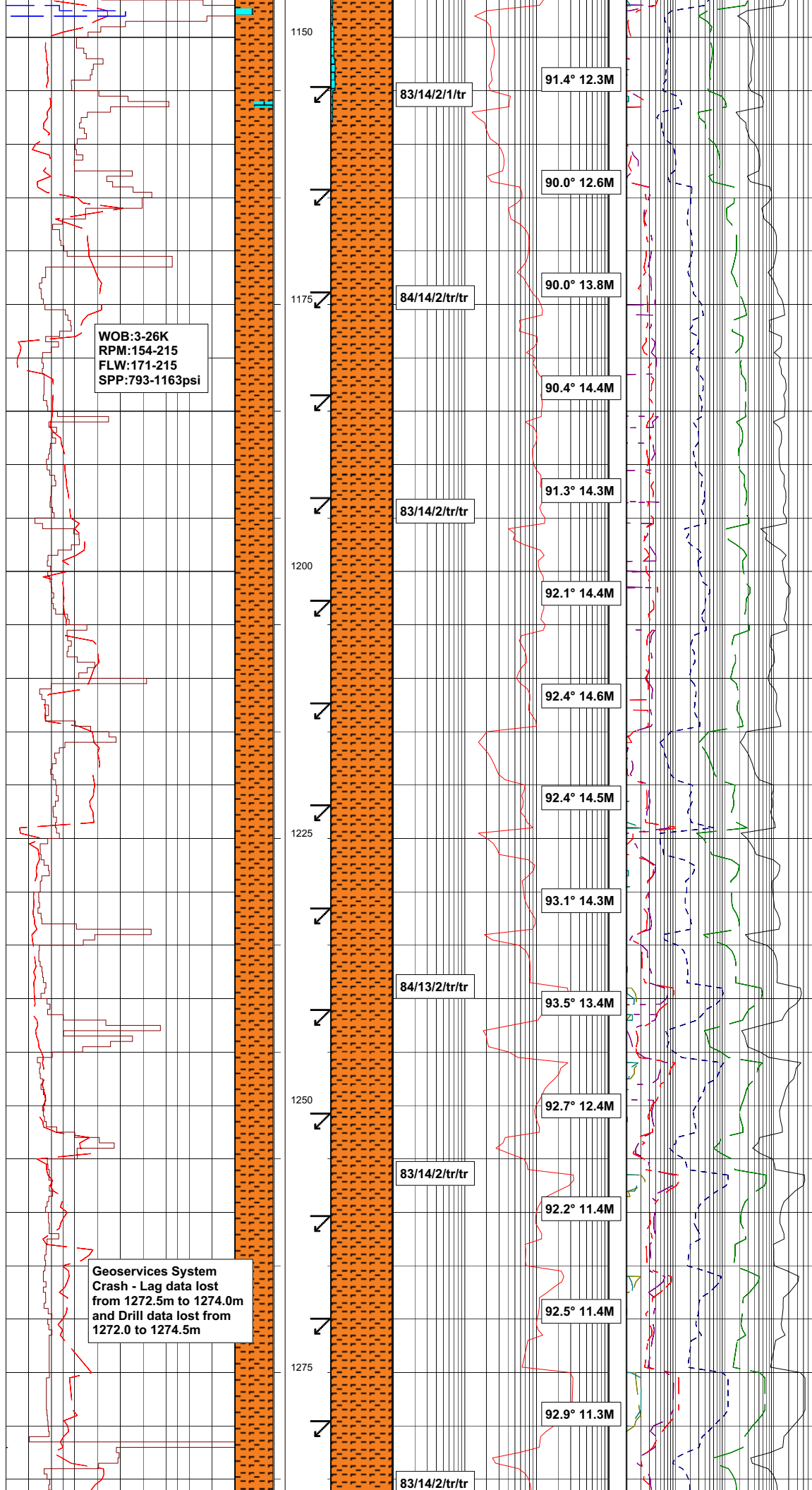
LIMESTONE:v pl brn-dk yel brn, CLSLT-CLCAR i/p,fri-sft,mod hd i/p,crumb-ang,tr ool frag,slty & occ qtz,com suc tex,occ dolom, nil-occ v pr vis por,no fluor.

BALDWIN-2H-ST1 KICK OFF @ 1104m on 22/09/2011 @ 14:00hrs

BIT#9RR PDC
MODEL:BAKER DP405
S/N:7025542
SIZE:6 1/8"
JETS:7x11,2x12
IN:1104m OUT:1473.3m
COND:1-3-CT-S-X-I-WT-WO

SILTSTONE:dk gry blk-brn blk -gry blk,arg,mod carb i/p,sl calc, occ grd to & mnr int w/ LMST, rr-occ vf qtz gr,disem pyr,occ carb spks,tr calcite incl & micr vn,tri & disp-mod hd,rr v hd,blky-tr sbky,no fluor,no shw.

LIMESTONE:gry brn-dsk brn,occ pl brn mott w/ med-dk gry i/p, CLSLT-CLCAR i/p,sft-frm,fri i/p, crumb-ang,tr ool frag,slty & occ qtz,disem pyr,tr blk org incl,com suc tex,occ dolom,pr vis & inf por,no flour,no cut.



WOB:3-26K
RPM:154-215
FLW:171-215
SPP:793-1163psi

Geoservices System
Crash - Lag data lost
from 1272.5m to 1274.0m
and Drill data lost from
1272.0 to 1274.5m

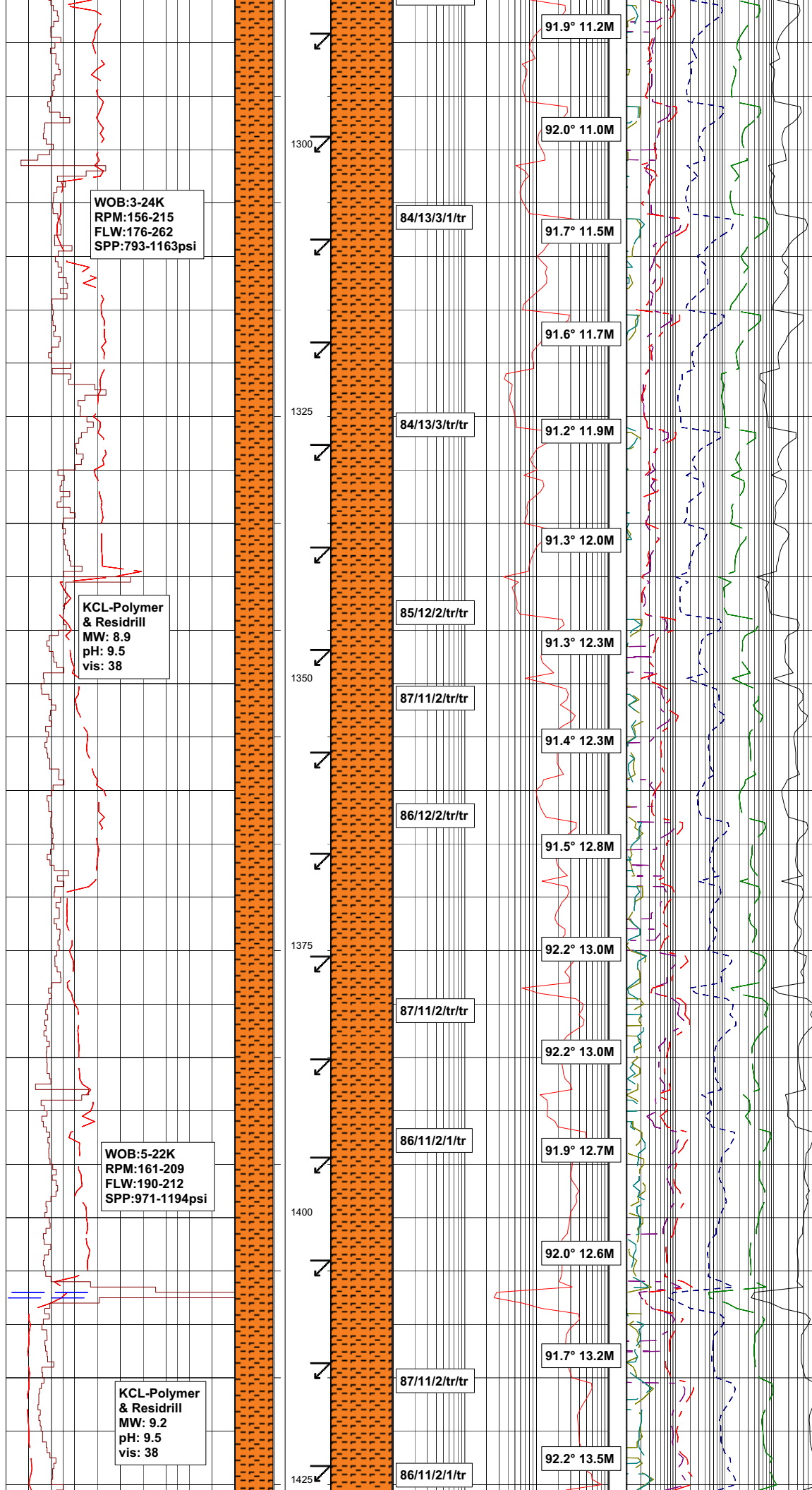
SILTSTONE:dk gry blk-brn blk-gry blk,arg,mod carb i/p,sli calc, occ grd to & mntr int w/ LMST, rr-occ vf qtz gr,disem pyr,occ carb spks,tr calcite incl & micr vn,tri & disp-mod hd,rr v hd,blky-tr sbfis,occ concoidal,no fluor, no shw.

SILTSTONE:dk gry blk-brn blk-gry blk,arg,mod carb i/p,sli calc, occ grd to & mntr int w/ LMST, rr-occ vf qtz gr,micr pyr,occ carb flk i/p,tr calcite incl & micr vn,tri & disp-mod hd,rr v hd,blky-tr sbfis,occ concoidal,no fluor, no shw.

SILTSTONE:dk gry blk-brn blk-gry blk,arg,mod carb i/p,sli calc, occ grd to & mntr int w/ LMST, rr-occ vf qtz gr,micr pyr,occ carb flk i/p,tr calcite incl & micr vn,tri & disp-mod hd,rr v hd,blky-tr sbfis,occ concoidal,no fluor, no shw.

SILTSTONE:dk gry blk-brn blk-gry blk,arg,mod carb i/p,tr calc, occ carb spks,rr vf qtz gr,abd disem-f pyr,occ calcite & dolomite incl & micr vn,occ gypsum micr vn & lse gr,mod hd-v hd,occ fri & disp,blky-sbfis,tr conc-hac frac, no fluor,no shw.

SILTSTONE:dk gry blk-brn blk-gry blk,arg,mod carb i/p,occ carb spks,rr vf qtz gr,com-abd disem-f pyr,occ calcite & dolomite incl & micr vn,occ gypsum micr vn & lse gr,mod hd-v hd,occ fri-disp,blky-sbfis,tr conc-hac frac,no fluor, no shw.



SILTSTONE:dk gry blk-brn blk-gry blk,arg,mod carb i/p,occ carb spks,rr vf qtz gr,com-abd disem-f pyr,occ calcite & dolomite incl & micr vn,occ gypsum micr vn & lse gr,mod hd-v hd,occ fri-disp,blky -sbfis,tr conc-hac frac,no fluor, no shw.

SILTSTONE:dk gry blk-brn blk-gry blk,arg,mod carb i/p,occ carb spks,rr vf qtz gr,com-abd disem-f pyr,occ calcite & dolomite incl & micr vn,occ gypsum micr vn & lse gr,mod hd-v hd,occ fri-disp,blky -sbfis,tr conc-hac frac,no fluor, no shw.

SILTSTONE:dk gry blk-brn blk-gry blk,arg,mod-v carb,mod calc -dol,com carb flks i/p,rr graphite frag,rr vf qtz gr,com-abd disem-f pyr,calcite & dolomite incl & micr vn,occ gypsum micr vn,sli-mod micmici/p,mod hd-v hd,tr fri & disp,blky-sbfis,conc-hac frac, no fluor,no shw.

SILTSTONE:dk gry blk-brn blk-gry blk,arg,mod-v carb,mod calc -dol,com carb flks i/p,rr graphite frag,rr vf qtz gr,com-abd disem-f pyr,calcite & dolomite incl & micr vn,occ gypsum micr vn,sli-mod micmici/p,mod hd-v hd,tr fri & disp,blky-sbfis,conc-hac frac, no fluor,no shw.

SILTSTONE:dk gry blk-brn blk-gry blk,arg,mod-v carb,mod calc -dol,com carb flks i/p,rr graphite frag,rr vf qtz gr,com-abd disem-f pyr,calcite & dolomite incl & micr vn,occ gypsum micr vn,sli-mod micmici/p,mod hd-v hd,tr fri & disp,blky-sbfis,conc-hac frac, no fluor,no shw.

WOB:4-22K
RPM:157-203
FLW:176-216
SPP:604-1333psi

KCL-Polymer
& Residrill
MW: 9.7
pH: 9.5
vis: 37

KCL-Polymer
& Residrill
MW: 9.9
pH: 9.5
vis: 39

1450

1475

1500

1525

1550

86/11/2/1/tr

86/12/2/tr/tr

86/11/2/1/tr

86/11/2/1/tr

87/10/2/1/tr

88/10/2/tr/tr

85/12/2/1/tr

86/11/2/1/tr

88/10/1/1/tr

88/10/2/tr/tr

87/11/2/tr/tr

89/10/1/tr/tr

86/12/2/tr/tr

86/12/2/tr/tr

87/11/2/tr/tr

92.8° 13.6M

92.3° 13.4M

93.0° 13.4M

93.1° 13.4M

92.6° 12.9M

92.7° 12.8M

91.3° 13.0M

90.0° 13.1M

90.4° 13.0M

90.8° 13.0M

91.5° 13.0M

91.9° 12.8M

91.6° 12.4M

SILTSTONE:dk gry blk-brn blk-gry blk,arg,mod-v carb,mod calc -dol,com carb flks i/p,rr graphite frag,rr vf qtz gr,com-abd disem-f pyr,calcite & dolomite incl & micr vn,occ gypsum micr vn,sli-mod micmici/p,mod hd-v hd,tr fri & disp,blky-sbfis,conc-hac frac, no fluor,no shw.

BIT#9RR PDC
MODEL:BAKER DP405
S/N:7025542
SIZE:6 1/8"
JETS:7x11,2x12
IN:1473.3m OUT:1474.3m
COND:1-3-CT-S-X-I-WT-WO

BIT#9RR PDC
MODEL:BAKER DP405
S/N:7025542
SIZE:6 1/8"
JETS:7x11,2x12
IN:1474.3m OUT:1952.5m
COND:3-4-BT-A-X-1-TR-DTF

SILTSTONE:dk gry blk-brn blk-gry blk,arg,mod-v carb,mod calc -dol,com carb flks i/p,rr graphite frag,rr vf qtz gr,com-abd disem-f pyr,calcite & dolomite incl & micr vn,occ gypsum micr vn,sli-mod micmici/p,mod hd-v hd,tr fri & disp,blky-sbfis,conc-hac frac, no fluor,no shw.

SILTSTONE:dk gry blk-brn blk-gry blk,arg,mod-v carb,mod calc -dol,com carb flks i/p,rr graphite frag,rr vf qtz gr,com-abd disem-f pyr,calcite & dolomite incl & micr vn,occ gypsum micr vn,sli-mod micmici/p,mod hd-v hd,tr fri & disp,blky-sbfis,conc-hac frac, no fluor,no shw.

WOB:1-14K
RPM:100-217
FLW:100-219
SPP:812-1601psi

KCL-Polymer
& Residriill
MW: 9.7
pH: 9.5
vis: 37

1575

88/10/2/tr/tr

91.9° 12.3M

92.0° 12.8M

91.1° 12.3M

85/12/2/1/tr

91.2° 12.1M

1600

85/12/2/1/tr

91.5° 12.6M

91.8° 13.0M

1625

85/13/2/tr/tr

92.1° 13.1M

92.7° 13.0M

86/12/2/tr/tr

93.5° 12.9M

1650

83/13/3/1/tr

93.5° 12.7M

93.7° 12.4M

82/13/4/1/tr

93.2° 12.3M

1675

84/12/3/1/tr

92.4° 12.0M

91.6° 11.6M

80/14/4/1/tr

91.6° 11.6M

1700

SILTSTONE:dk gry blk-brn blk-gry blk,arg,mod-v carb,mod calc -dol,com carb flks i/p,rr graphite frag,rr vf qtz gr,com-abd disem-f pyr,calcite & dolomite incl & micr vn,occ gypsum micr vn,sli-mod micmic/p,mod hd-v hd,tr fri & disp,blky-sbfis,conc-hac frac, no fluor,no shw.

SILTSTONE:dk gry blk-brn blk-gry blk,arg,mod-v carb,mod calc -dol,com carb flks i/p,rr graphite frag,rr vf qtz gr,com-abd disem-f pyr,calcite & dolomite incl & micr vn,occ gypsum micr vn,sli-mod micmic/p,mod hd-v hd,tr fri & disp,blky-sbfis,conc-hac frac, no fluor,no shw.

LIMESTONE(Tr-2%):off wh-wh,v dk gy,oolitic,spartic,vf-f,w/ f-med ools,v frm-mod hd, v pr vis por,no fluor.

SILTSTONE:dk gry blk-brn blk-gry blk,arg,mod-v carb,mod calc -dol,com carb flks i/p,rr graphite frag,rr vf qtz gr,com-abd disem-f pyr,calcite & dolomite incl & micr vn,occ gypsum micr vn,sli-mod micmic i/p,mod hd-v hd,tr fri & disp,blky-sbfis,conc-hac frac, no fluor,no shw.

KCL-Polymer
& Residrill
MW: 9.7
pH: 9.5
vis: 37

WOB:1-13K
RPM:174-230
FLW:188-225
SPP:1417-1848psi

1725

1750

1775

1800

1825

87/10/2/1/tr

91.4° 12.0M

90.3° 12.1M

89.2° 11.8M

88/10/1/1/tr

88.7° 12.1M

86/12/2/tr/tr

88.8° 12.4M

89.1° 12.2M

87/11/2/tr/tr

89.0° 12.9M

89.3° 13.0M

88/10/2/tr/tr

89.8° 13.0M

90.7° 13.1M

89/9/1/tr/tr

91.2° 12.9M

90.5° 12.4M

88/11/1/tr/tr

90.8° 12.3M

90.9° 12.2M

91.0° 12.1M

LIMESTONE:mott pl yel brn-
med lt gry w/ med gry-blk,occ
ool,vf-f,f-med blk ool,sli
sparitic,frm disem pyr w/ tr
vf nod pyr,com foss frag,occ
carb spks,rr inter w/ SLTST
i/p,v pr vis por,no shw,no
fluor.

SILTSTONE:dk gry blk-brn blk-
gry blk,arg,mod-com carb i/p,mod
calc-dol,com carb flks,rr graphite
frag,occ vf qtz gr,com disem
pyr,occ calcite & dolomite micr
vn,occ gypsum micr vn,sli-mod
micmic i/p,mod hd-v hd,tr fri &
disp,blky-sbfis,conc-hac frac,
no fluor,no shw.

SILTSTONE:dk gry blk-brn blk-
gry blk,arg,mod-com carb i/p,mod
calc-dol,com carb flks,rr graphite
frag,occ vf qtz gr,com disem
pyr,occ calcite & dolomite micr
vn,occ gypsum micr vn,sli-mod
micmic i/p,mod hd-v hd,tr fri &
disp,blky-sbfis,conc-hac frac,
no fluor,no shw.

SILTSTONE:dk brn gry-brn blk,
arg,mod-com carb i/p,sli mod
calc-dol,occ vf qtz gr,com disem
pyr,occ calcite & dolomite micr
vn,occ gypsum micr vn,sli-mod
micmic i/p,mod hd-v hd, tr fri
& disp,blky-sbfis,occ conc-hac
frac,no fluor,no shw.

