


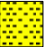









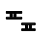

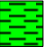











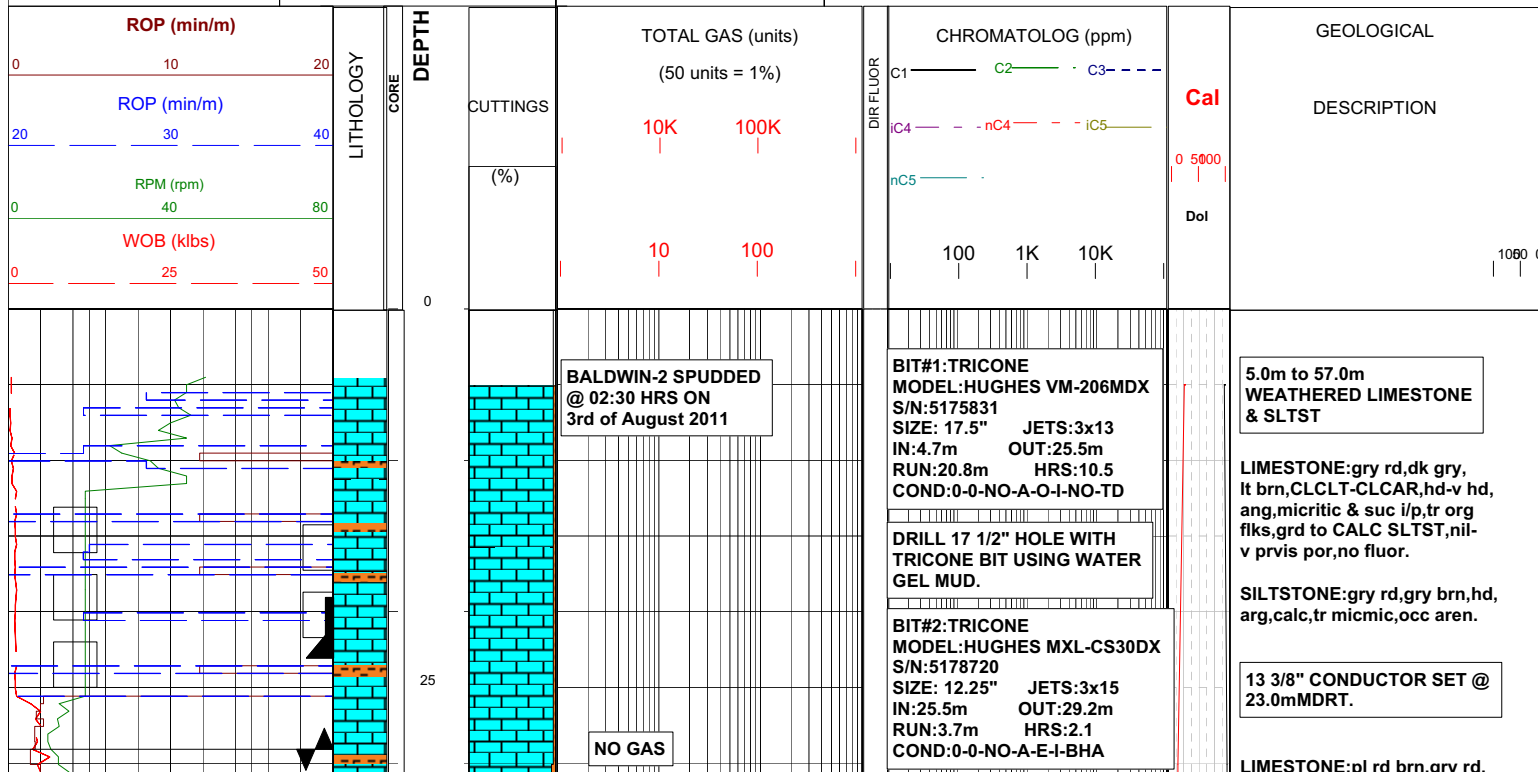
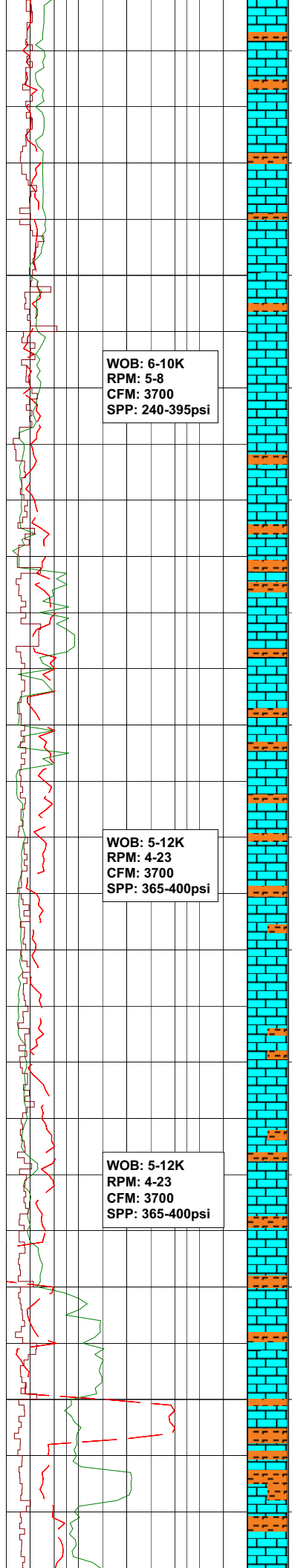


Field : BALDWIN	Rotary Table: 352.08m	Rig : Schramm TXD 200	Open Hole:	Cased Hole:	Loggers : A.Sullivan
Permit : EP-103	Ground Level : 348.38m	Spud Date : 01/09/11	17 1/2": 29.0	13 3/8": 23.0m	K.Nikkhah
State : Northern Territory	Datum: GDA 94	TD Date : 19/09/11	12 1/4": 421.0m	9 5/8": 417.8m	A.Poetsch
Country : Australia	Lat. : 22°15'49.76" S	Total Depth : 1605.0m	6 1/8" : 1605.0m	7": 515.1m	K. Velauthapilai
Scale: 1/ 500	Long. : 136°02'19.36" E	Final Status : Plugged & Abandoned			

LITHOLOGY	ACCESSORIES	DRILLING DATA	ABBREVIATIONS
 Calcareous Siltstone	 Pyrite	 Casing shoe	BOPD - Barrels of Oil Per Day OG - Over Gauge
 Loose Sand	 Glauconite	 Deviation survey	BWPD - Barrels of Water Per Day OH - Open Hole
 Silty Sandstone	 Mica	 Dst	CG - Connection Gas OTS - Oil To Surface
 Siltstone	 Chert	 Core	CO - Circulate Out Q - Flow Rate
 Carb Siltstone	 Calcareous	 Calcimetry	COND - Condensate REC - Recovery
 Clay-shale	 Fossils	MUD DATA	c/c - Crush Cut Rmf - Resistivity mud filtrate
 Limestone	 Iron	MW - Mud Weight (lb/gal)	ROP - Rate Of Penetration
 Dolomite	 Breccia	FV - Funnel Viscosity (s/qt)	RPM - Revolutions Per Minute
 Coal-lignite	 Argillaceous	PV - Plastic Viscosity (cps)	RTSTM- Rate Too Small To Measure
 Granit	 Carbonaceous	YP - Yield Point (lb/100ftsq)	Rw - Resistivity water
 Volcanic rock	 Foraminifera	Gel - Gel Strength (10sec)	r/r - Ring Residue
		WL - Water Loss (cc/30min)	SCFM - Standard Cubic Ft/Min (air)
		pH - Acidity / Alkalinity	SGCM - Slightly Gas Cut Mud
		Ck - Cake (32nd/inch)	SPM - Strokes Per Minute
		Sol - Solids (% vol)	SPP - Stand Pipe Pressure
		Cl - Chlorides (mg/l)	SWC - Side-Wall Core
			TG - Trip Gas
			WOB - Weight On Bit





WOB: 6-10K
RPM: 5-8
CFM: 3700
SPP: 240-395psi

NO GAS

WOB: 5-12K
RPM: 4-23
CFM: 3700
SPP: 365-400psi

NO GAS

WOB: 5-12K
RPM: 4-23
CFM: 3700
SPP: 365-400psi

NO GAS

DRILL OUT CEMENT WITH
12 1/4" TRICONE BIT.

DRILL 12 1/4" HOLE WITH
AIR HAMMER..AIR MISTED
WITH 10bbl/hr WATER.

BIT#3:HAMMER
MODEL:NUMA MXL-ES30DX
S/N:12520SIS
SIZE:12.25" JETS:none
IN:29m OUT:421m
RUN:392m HRS:23.45
COND:1-1-BT-N-0-I-TD

HAMMER DRILLING
WITH AIR MIST

pl brn,yel brn,CLCSLT-CLCLT,
xln,hd-v hd,ang,suc,tr anhyd,
tr rnd qtz,mnr micmic,tr blk
min spks,nil-pr vis pr.

57.0m to 120m
LIMESTONE with interbedded
SLTST

LIMESTONE:pl brn,grysh brn,
CLCLT-CLCAR,xln,homog,hd-
v hd,blk-ang,tr brn liths,nil vis
por.

SILTSTONE:dk gry-med gry,dsty
red,mottled i/p,mod hd-v hd,ang,
calc,micmic i/p,tr vf qtz.

LIMESTONE:gry brn,lt brn,
lt olv gry,pl yel brn,hd-v hd,
xln,CLCLT-CLCAR,ooids,
spar & suc,tr pyr,nil-pr vis por.

WELL PRODUCING WATER
MIST: @ 5 bbl/hr

LIMESTONE:gry brn,lt brn,
lt olv gry,hd-v hd,xln,CLCLT
-CLCAR,tr ooid,occ suc txt,
dol i/p,tr pyr,nil-v pr vis por.

SILTSTONE:gry rd,gry brn,
frm-mod hd,ang-blky,micmic,
sli aren,wk calc.

SANDSTONE:gry pnk,lse-mod
hd,vf-occ med,rnd,mod srt,
aeolien,apar calcite cmt,tr yel
orng min,v pr vis to pr inf por,
no fluor.

LIMESTONE:pl red brn,
grysh red,pl brn,CLCSLT-
CLCLT,xln,hd v hd,ang,
suc,tr anhyd,tr rnd qtz,
mnr micmic,tr blk min spks,
nil-pr vis por.

120.0m to 190.0m
LIMESTONE with interbedded
SLTST

SURVEY @ 126m 0.75° 010T

LIMESTONE:pl yel brn,lt brn,
pl rd,lt olv gry,CLCAR-CLCLT,
xln,mod hd-v hd,ang,spar,suc,
ooids,tr styol,nil-pr vis por.

SILTSTONE:gry rd,lt gry,lt olv
gry,ang,grd to CLYST,micmic,
aren i/p,tr rnd qtz grns,calc
i/p,tr blk flks.

LIMESTONE:brnsh gry,pl red,
gry red,CLCLT-CLCAR,hd-v hd,
spry i/p and suc,occ yel brn
coated incls,rr bitum incls.

SILTSTONE:gry red,red brn,med
gry,var arg,grd to CALC SLTST.

HAMMER DRILLING
WITH AIR MIST

LIMESTONE:brnsh gry,gry red,
med dk gry i/p,pl red,CLCLT-
CLCAR,xln,spry i/p w/ yel brn
min coating,suc i/p,var arg,
grd to CALC SLTST i/p,tr lith
flks.

SILTSTONE:dom gry red,
red brn,med gry i/p,frm-hd,ang-
sbfiss i/p,micmic,com calc,occ

WOB: 6-10K
RPM: 5-8
CFM: 3700
SPP: 240-395psi

WOB: 6-10K
RPM: 15-24
CFM: 3700
SPP: 295-400psi

WOB: 6-10K
RPM: 10-25
CFM: 3700
SPP: 340-410psi

WOB: 6-11K

NO GAS

NO GAS

NO GAS

WELL PRODUCING WATER
MIST: @ 1 bbl/hr

qtz grns,grd to arg LST,mnr pyr.
rr bitum incl @ 160m

LIMESTONE:brnsh gry,gry red,
med dk gry i/p,pl red,CLCLT-
CLCAR,xln,spry i/p w/ yel brn
min coating,suc i/p,var arg,
grd to CALC SLTST i/p,tr lith
flks,tr bitum.

SURVEY @ 183m 0.5° 010T

SILTSTONE:dom gry red,red
brn,occ olv gry,med gry i/p,
frm-hd,ang-sbfiss i/p,micmic,
com calc,occ qtz grns,grd to
arg LST,mnr pyr.

190.0m to 305.0m
LIMESTONE with decreasing
SST beds & SLTST

SANDSTONE:lt olv gry,fri
-occ hd,mnr lse in smpl,vf-f,
occ med,rnd-sbrnd,sbsph,clr
qtz,calc cmt,calc mtx,bitum
stng,mnr lith flks,tr pyr,tr flour,
nil-pr vis por,no fluor.

HAMMER DRILLING
WITH AIR MIST

LIMESTONE:lt olv gry,pl brn,
dk gry,dk brn,CLCLT,mnr
CLCAR,hd-v hd,xln,homog,
ang,arg i/p,slty & bit styol,
occ ool lyrs,nil-occ v pr
vis por,dll yel solid min fluor.

WELL PRODUCING WATER
MIST @ 5 bbl/hr

SILTSTONE:med-dk gry,gry brn,
hd,ang,micmic,calc,grd to LST,
tr org lyrs.

SURVEY @ 240m 0.0° 045°T

SANDSTONE:lt-med gry,mod
hd-fri,vf-f,wl srt,calc cmt &
mtx,bit mtx i/p,v pr-pr por,
no fluor.

LIMESTONE:gry orng,pnk,lt
olv gry,gry rd,pl brn,CLCLT-
CLCAR,xln,hd-v hd,suc i/p,
ool,arg i/p,grd to SLTST,occ
bit incl, nil-occ pr vis por.

LIMESTONE:gry orng,pnk,lt
olv gry,gry rd,pl brn,CLCLT-
CLCAR,xln,hd-v hd,suc i/p,
ool,arg i/p,lse crs spar calc,
grd to SLTST,occ bit incl, nil-
occ pr vis por.

LIMESTONE:brn blk,med-
dk gry,gry brn,hd-v hd,ang
CLCLT,CLCAR i/p,xln,mnr ool,
spar w/ lse crs calc crystals,
mnr styol,arg i/p,nil-occ pr
vis por.

305.0m to 350.0m
DOLOMITE with interbedded
LST,Mnr SLTST & SST

LIMESTONE:brn blk,med-dk gry,
gry brn,hd-v hd,ang,CLCLT,dol
i/p,CLCAR i/p,xln,mnr ool,
spar w/ lse crs calc crystals,
mnr styol,arg i/p,no-occ pr
vis por.

SILTSTONE:med-dk gry,dk gry
brn,hd-frm,blky-ang,micmic,
grd to CLYST,var calc.

SURVEY @ 309m 0.5° 010T

RPM: 10-25
CFM: 3700
SPP: 370-440psi

WOB: 7-11K
RPM: 5-25
CFM: 3700
SPP: 405-480psi

WOB: 6-11K
RPM: 10-38
CFM: 3700
SPP: 370-440psi

NO GAS

NO GAS

NO GAS

NO GAS

BIT#4:TRICONE
MODEL:HUGHES MXL-DS44CDX
S/N:5191787
SIZE: 8.5" JETS:3x20
IN:421m OUT:950m
RUN:529m HRS:41.27
COND:3-1-CT-C-4-I-BT

9 5/8" SURFACE CASING SET
@ 417.8mMDRT.

TOP HAGEN MEMBER:
429.0mMDRT(-73.8m)

SURVEY @ 366m 0.5° 035T
DOLOMITE:pl brn-brn gry,
CLCLT-CLCAR,xln,suc i/p,hd-
v hd,ang,mnr vugs w/ calc fill,
mnr org flks,arg & carb lyr,tr
bitum,nil-v pr vis por,no fluor.

SANDSTONE:(tr)v pl brn,v lt
olv gry,hd-fri,vf,wl srt,sbrnd,
mnr f-rr med qtz,var calc cmt
& mtx,occ bitum,blk min flks,v pr
-occ fr vis por,no fluor.

LIMESTONE:med lt gry,lt olv
gry,med-dk gry,com lse spar
calc,fri-lse xln,w/ mnr bitum
coated,dol i/p,

DOLOMITE:lt gry-lt olv gry,
CLCLT,xln,v hd-fri,ang,suc,mnr
styo,rr ooids,mnr vugs,nil-pr
vis por,dll yel min fluor.

com lse spar calcite,occ bitum
coated grs.

LIMESTONE:as above,dol i/p.

350.0m to 405.0m
DOLOMITE with interbedded
LST, Mnr SST beds

LIMESTONE:med lt gry-lt olv
gry,med gry i/p,CLCLT,xln,
micritic txt i/p,v hd-occ fri,
ang-crmby,occ suc txt,arg i/p,
dol i/p,rr ooids,v pr vis por i/p.

SURVEY @ 366m 0.5° 035T

DOLOMITE:wht,hd-v hd,ang,
spr frac fill & replacement
of calc,mnr assoc fluorite,
agate,interstit bitum.

DOLOMITE:pl brn,hd,ang,suc,
calc filled vugs,tr bitum,nil-
mnr pr vis por,no fluor,discont
anhyd strm & lyr.

SILTSTONE:dk gry-brn blk,
hd-mod hd,ang,tr pyr.

LIMESTONE:med gry-grysh brn,
CLCLT,xln,hd-v hd,dol,mnr pyr,
nil vis por.

405.0m to 429.0m
Dolomite with thin SST beds

SANDSTONE:pl yelsh brn,mod
hd-hd,v f grns,wl srt,sbrd,sbsph,
calc cmt & mtx,blk min spks,
dissem pyr,mnr slty lyr,nil-
v pr vis por,no fluor.

DOLOMITE:pl yelsh brn,pl brn,
brn gry,DOLOAR,hd w/ com lse
spr dol grns,mnr bitum coated
grns,tr dead oil stng,nil-pr inf
por,yel solid min fluor,no direct
hydcrbn fluor,no cut fluor.

DOLOMITE:lt olv gry-lt brn,
DOLOSLT,xln,mod hd-hd,brit,
ang,tr styol,tr min flks,nil-v
pr vis por,dll yel solid min fluor.

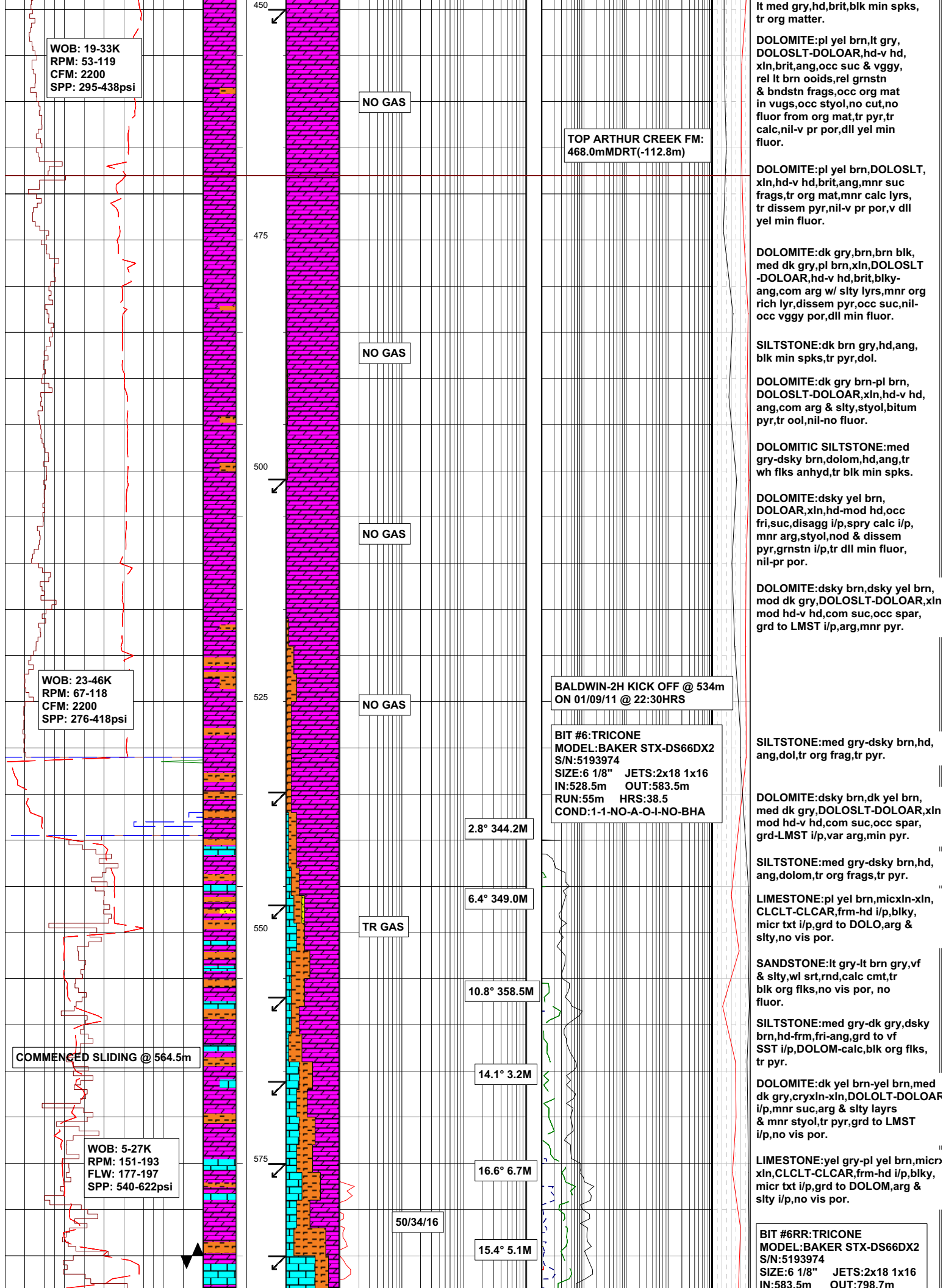
DOLOMITE:pl brn-pl yel brn,
DOLOLT-DOLOAR,xln,mod hd-
v hd,rr fri,brit,suc i/p,tr
styo,ls,bndstn i/p,tr pyr,nil
-occ pr vis por,mnr vgy por,
dll yel min fluor.

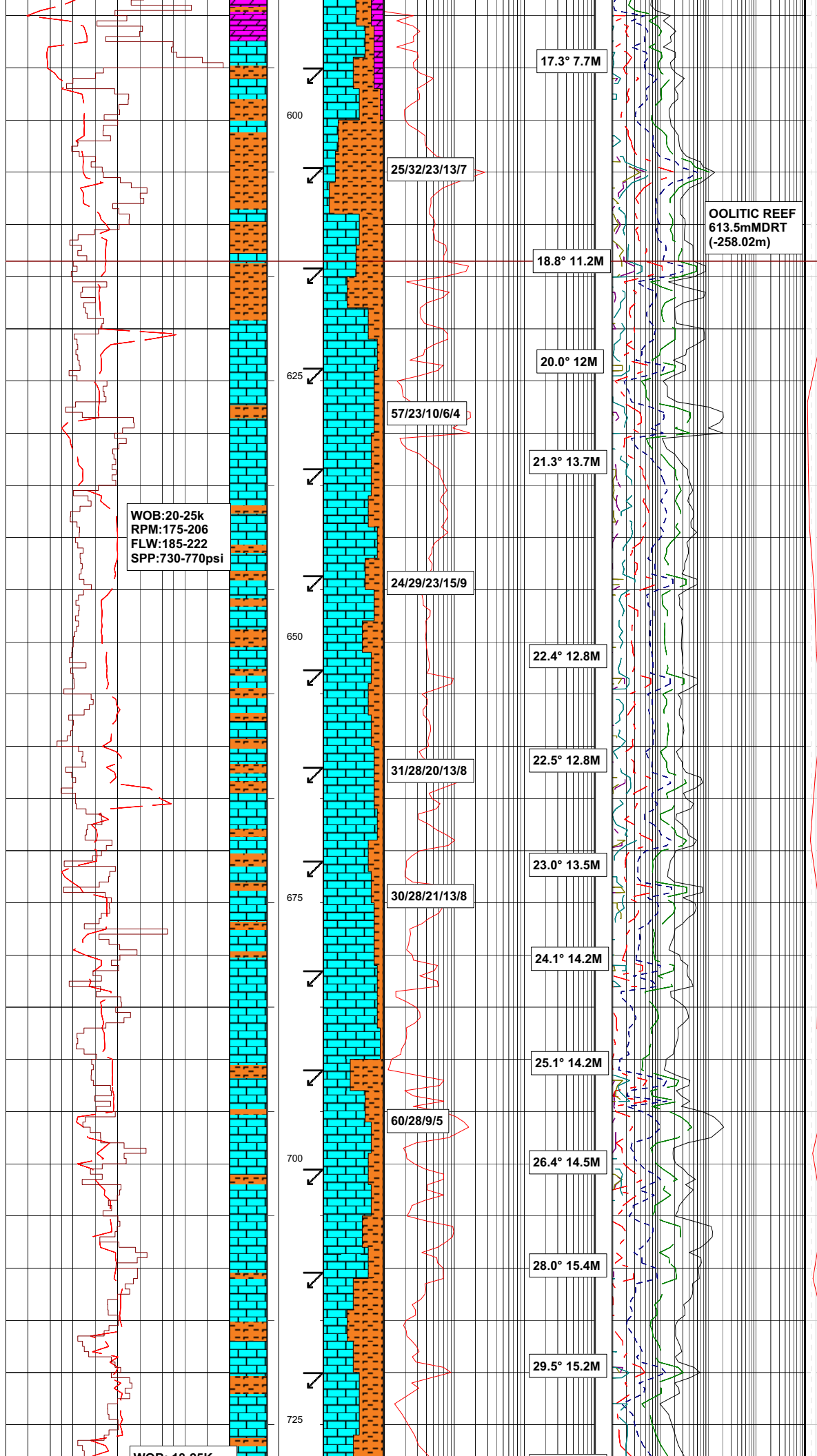
429.0m to 468.0m
DOLOMITE w/ tr Calc SLTST

DOLOMITE:pl yel brn,lt olv
gry,brn blk-gry blk i/p,xln,
DOLOLT-DOLOAR,mod hd-hd,
suc & fri i/p,tr spry calc,tr qtz
grns,rel ooids,rel grnstrn,mnr
aren lyr,tr bitum mat,nil-pos
fr vgy por,dll yel min fluor.

468.0m to 555.0m
DOLOMITE w/ Siltstone beds

CALCAREOUS SILTSTONE:





LIMESTONE:yel gry-lt olv gry,dsky brn,micrxln-xln,CLCLT-com CLCAR sft frm,occ mod hd,blky,suc-micr txt i/p,grd to DOLOM,arg & slty i/p,no vis por.

SILTSTONE:med gry-blk,occ med lt gry,frm-mod hd,hd i/p,ang-occ fri, aren i/p,calc to dolomitic,blk org frag,disem & nod pyr,tr micmic.

621-627 NO DIRECT FLUOR TR DIM SPTTD THN RNG YEL RES RNG AFTER CRSH

LIMESTONE:dsky yel brn,dk gry brn,pl brn,mot i/p,CLSLT-CLCAR i/p,xln frm-mod hd i/p,ang,brit i/p,occ dolomitic,var arg,grd to calc SLTST,tr pyr nod,tr min flks,nil-v pr vis por.

SILTSTONE:med gry-gry blk,dsky b hd-mod hd,ang,occ aren,var calc,oc f lam w/ LMST,blk org frag,dissem & nod pyr,tr micmic.

639-642 NO DIRECT FLUOR TR V THN DIM RES RNG RES AFTER CRSH CUT.

LIMESTONE:dsky yel brn,yel gry-pl brn,mot,CLCLT i/p,xln,frm-mod hd i/p,ang-brit i/p,suc-occ spar,tr silica frac& vug fill,occ pl grn min,mnr bit standvugs,rel grnd txt,oal i/p,stylol & org rich slty patings,occ dol,tr nod pyr,tr min flks,nil-v pr vis por.

LIMESTONE:dsky yel brn,yel gry-pl brn,CLCLT-CLCAR i/p,xln-cryp xln, frm-v hd,fri-ang,arg i/p & grd to SLTS,blk min spks & occ pyrmsuc i/p,no fluor.

SILTSTONE:dsky yel brn-brn blk, hr,ang,calc,frm-mod hd,blkky, dissem pyr,micmic,grd to LMST, chrtly i/p.

LIMESTONE:pl brn-dsky yel brn, xln,CLCSLT,hd-mod hd,ang-crmblly micr txt i/p,arg,stylol,pyr,rr asic yel min,no vis por.

LIMESTONE:dk yel brn-pl brn, CLCSLT-CLCAR,xln,v hd-frm,ang-crmblly,suc,tr pyr,occ anhyd mtx, no-occ pr vis por,no fluor.

SILTSTONE:med gry-brn blk,com hd,ang,var calc,v frm-mod hd i/p,& blkky,dissem pyr,micmic, grd to arg LMST,some v hd brn blk chrtly frag & layers,some thn anhyd layers & incls.

LIMESTONE:lt olv gry-pl brn-brn bl CLSLT-CLCAR,xln-crypto xln i/p,hd frm,v hd i/p,ang-fri,com suc,occ micr txt,tr pyr,com arg,occ anhyd mtx,no-occ pr vis por,no fluor.

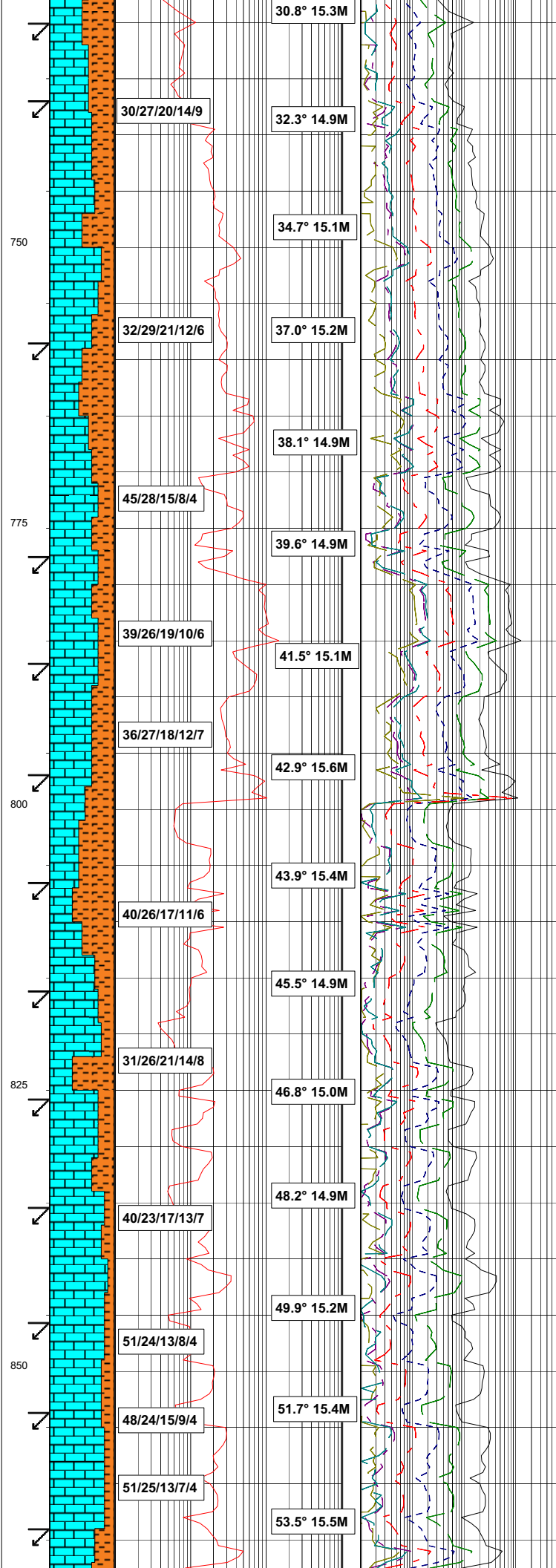
SILTSTONE:med gry-brn blk,frm-hc v hd i/p,ang-blky,var calc,dissem pyr,micmic,grd to arg LMST, some v hd brn blk chrtly frag & layers,some thn anhyd layers & incls.

LIMESTONE:dsky yel brn-brn blk, occ pl brn,CLSLT,xln,frm-mod hd, ang-fri-brit i/p,com suc,occ micr txt,tr pyr,occ grd to SLTST,occ anhyd mtx,no-pr vis por,no fluor.

WOB: 18-25K
RPM: 142-2250
FLW: 203-221
SPP: 620-840psi

WOB: 8-20K
RPM: 75-210
FLW: 90-216
SPP: 317-836psi

KCL-Polymer
& Residrill
MW: 8.8
pH: 8.5
Vis: 37



SILTSTONE: med gry-brn blk, frm-hd
v hd i/p, ang-blky, calc, dissem pyr,
micmic, grd to arg LMST, org spks,
some thnandy layers & incl.

LIMESTONE: olv gry-dsky yel brn,
CLCLT, xln-occ crypto xln, frm-mod
hd, v hdi/p, ang-com suc, occ mic
txt, tr pyr, occ anhyd mtx, no vis
por.

LIMESTONE: gry brn-dsky yel brn,
CLCSLT, grd to CLCLT, xln, hd-fri,
ang-crmby, rel grnstr, fossfer
i/p, grd to SLTST, occ DOLOM, no-
v pr vis por, no fluor.

SILTSTONE: med gry-dsky yel brn,
brn blk, v hd-mod hd, ang-blky,
var calc, grd to LMST, f interlam
w/ tr foss frags, micmic, org rich
lay, tr dissem pyr, no vis por.

LIMESTONE: gry brn-olv gry, med
gry, CLCSLT, xln, frm-hd, crmbly-
ang, micr txt, foss frags, min
anhyd, v pr vis por, no fluor.

LIMESTONE: gry brn-olv gry, brn blk
CLCSLT, xln, frm-hd, crmbly-ang, mic
txt, rel grnstr txt, com foss frags,
com arg, grd to SLTST, v pr-nil vis
por, nil fluor.

BIT #7: HUGHES
MODEL: STX-DS50DX
S/N: 5192233
SIZE: 6 1/8" JETS: 2x18, 1x16
IN: 798.7m OUT: 971.7m
RUN: 173m HRS: 28.7
COND: 3-3-WT-6-4-2-CT-DMF

SILTSTONE: brn blk-dk gry brn, dk
gry-hd-frm, blk-occ subfiss,
calc, tr micmic, grd to LMST, mnr
foss frag.

LIMESTONE: olv gry-olv blk-brn blk,
CLSLT, xln, cryxln i/p, frm-hd i/p,
crmbly-ang, micr txt, rel grnstr
& boundstr txt i/p, com foss frags,
freq arg & grd to SLTS, v pr-
nil vir por.

LIMESTONE: olv gry, olv blk, CLSLT,
xln-cryxln, frm-hd, ang-crmby, rel
grnstr, foss frag, tr chrt, arg &
grd to SLTST, v pr-nil vis por.

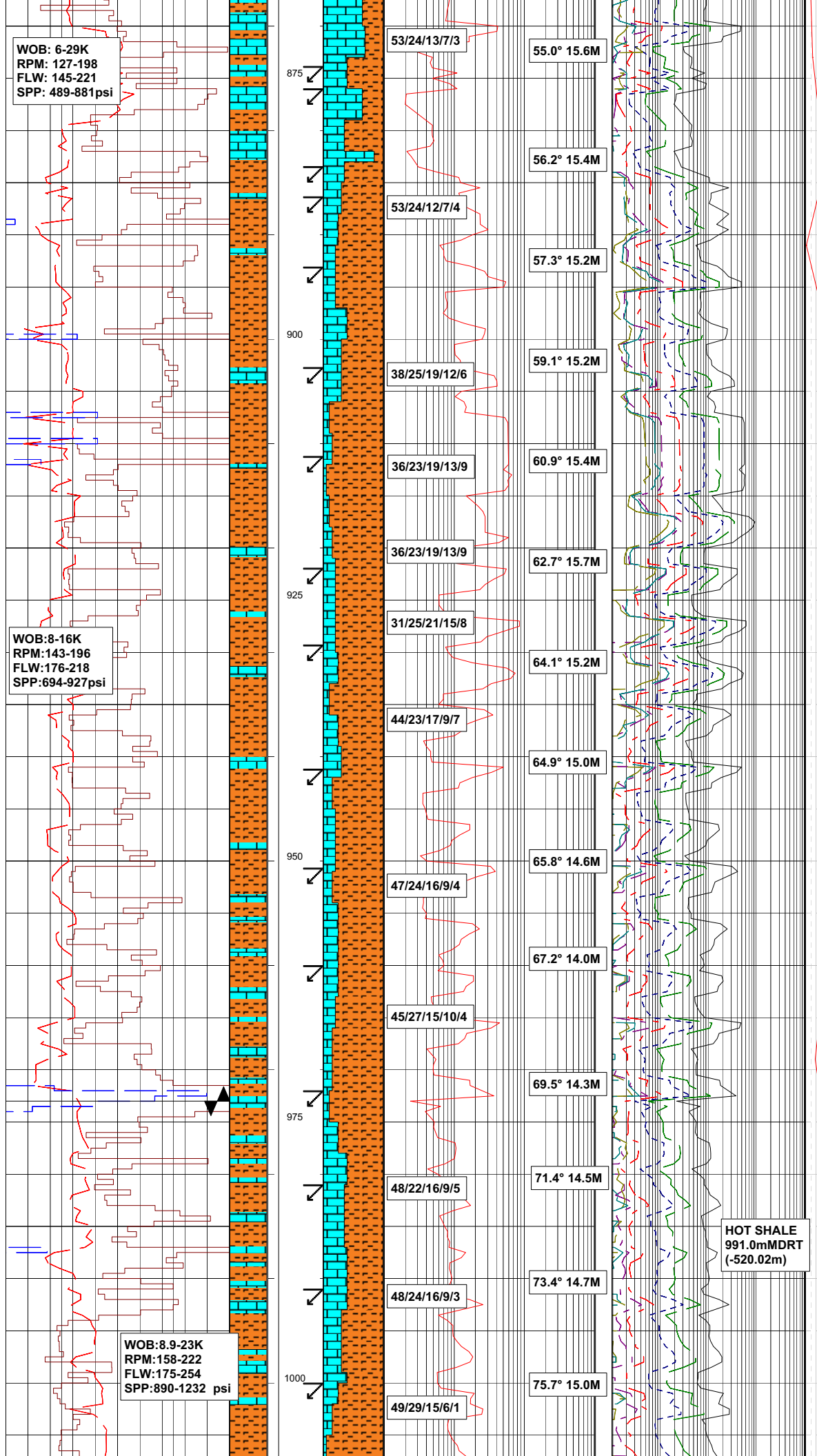
SILTSTONE: med dk gry, brn blk, gry
brn, mod hd-hd, blk-ang, var calc,
inter lam with LMST

LIMESTONE: pl yel brn, gry brn,
med gry, CLCLT-CLCSLT, xln, v hd-
frm, ang-crmby, micr txt, occ suc,
rel grnstr, occ styol, occ foss
frags, arg grd to SLTST, nil-v pr
por.

LIMESTONE: dk brn, brn blk, grysh
blk, grysh brn, pl brn, mott brn,
CLCLT-CLCAR, xln, mod hd-hd, ang-
crmbly, occ suc, tr spar calc,
dolom i/p, arg grd to SLTST, foss
frags, no vis por.

SILTSTONE: brn blk, med dk gry,
gry blk, hd-mod hd, blk-ang,
calc, tr micmic, occ pyr.

LIMESTONE: brn blk, dsky yel brn,
pl brn, CLCLT-CLCAR, xln, v hd-
frm, ang-blky, micr txt i/p.



com arg grd to SLTST,blk org
mat,occ grnstrn & boundstrn txt,
trfoss frags,no vis por.

SILTSTONE:brn blk-med dk gry,
gry blk,hd-mod hd,blky-ang,var
calc,tr micmic,tr v f qtz,occ
nod pyr.

LIMESTONE:gry ben-brn blk,dsky
yel brn,CLCLT-CLCAR,xln-cryxln,
hd-frm,ang-crmby,micr i/p,com
arg & grd to SLTST,tr org rich
layers,tr pyr,no vis por.

SILTSTONE:med dk gry-gry blk,
hd-mod hd,v hd i/p,blky-ang,
com calc & grd to LMST,micmic,
occ nod pyr.

LIMESTONE:olv gry-dk gry blk,
CLSLT-CLCAR,xln-cryxln,frm-mod
hd,ang-crmby,micr i/p,com arg
& grd to SLTST,dol i/p,tr foss
frag,no vis por.

SILTSTONE:med gry-pred gry blk,
hd-v hd,ang-blky,rr foss,arg
grd to LMST i/p,var calc,tr
nod pyr.

LIMESTONE:dsky yel brn-olv blk,
CLCLT-CLCAR,xln,frm-mod hd,ang,
grnstrn,com arg grd to SLTST,foss
frag,no vis por.

LIMESTONE:med gry,brn gry,mott,
CLCLT,xln,frm-mod hd,ang-crmby,
micr txt,arg grd to SLTST,tr
anhyd mtx,no vis por.

SILTSTONE:med dk gry-brn blk,
mod hd-hd,ang-occ sbply,var
calc,grd to LMST,micmic layers,
tr pyr.

LIMESTONE:grysh brn,dsky yel brn
brnsh blk,CLCLT-CLCLT,xln,hd-frm
ang-crmby,micr txt i/p,com arg
grd to SLTST,rr styol,no vis por.

SILTSTONE:grysh blk-brnsh blk,
mod hd-hd,ang-blky,calc i/p,
grd to LMST,micmic,tr dissem
& nod pyr.

LIMESTONE:grysh brn,dsky yel
brn,brnsh blk,CLCLT-CLCLT,xln,
hd-frm,ang-crmby,micr txt i/p,
com arggrd to SLTST,rr styol,no
vis por.

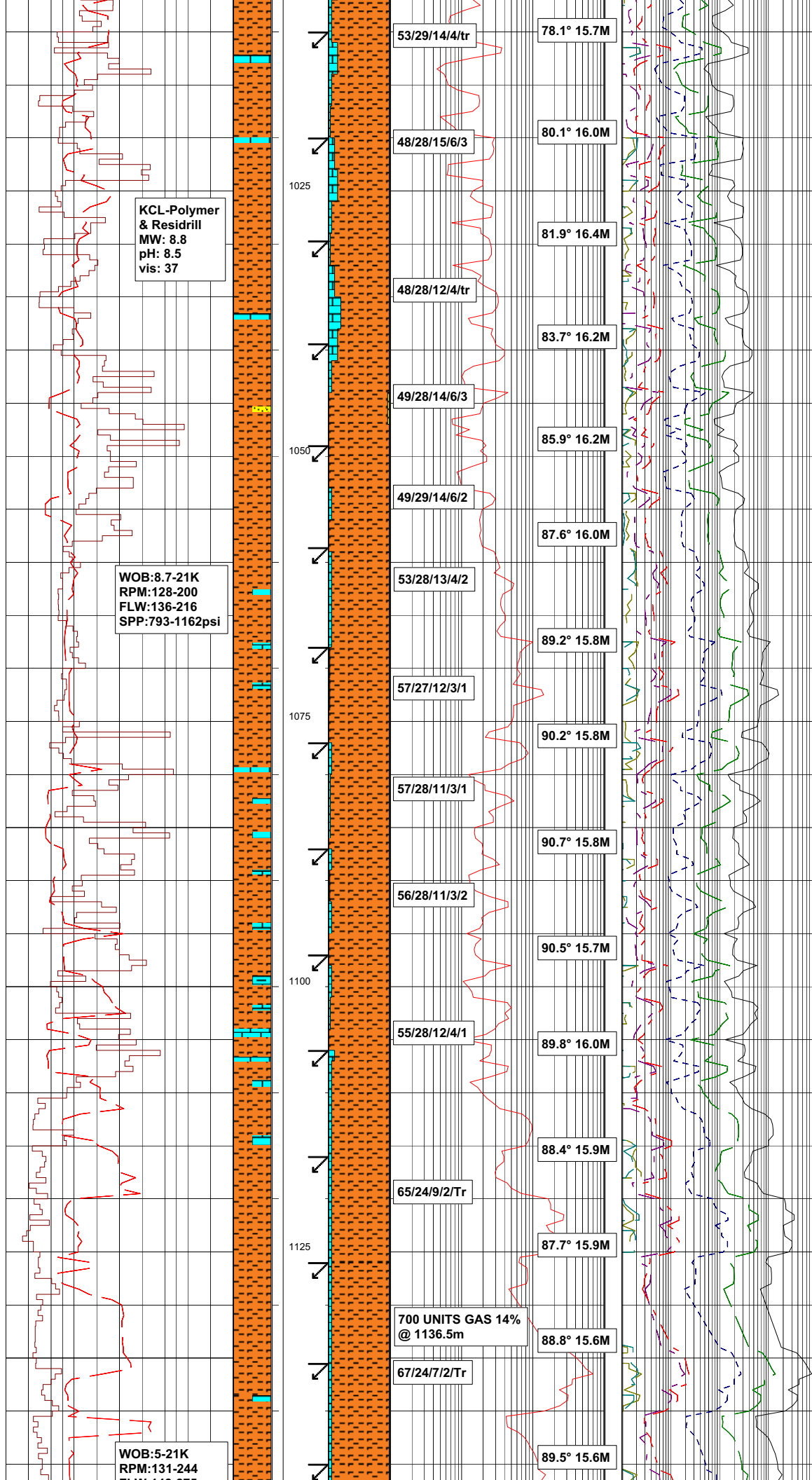
SILTSTONE:grysh blk-brn blk,
med gry,hd-v hd,ang,blky,calc,
grd to LMST,mnr micmic,dolom
i/p,tr dissem pyr.

BIT#8:PDC
MODEL:DP406
S/N:7025543
JETS:5x11,2x12
IN:971.1m OUT:1243m
RUN:271.9m HRS:28.5
COND:0-0-NO-A-X-I-NO-BHA

LIMESTONE:gry brn-med gry,dk
gry,mott,CLCSLT,xln,mod hd,blky,
micr txt i/p,com silty & arg grd
to SLTST,f interbed w/ SLTST,
dolom i/p,occ ool frags,some
suc aggs,no vis por.

SILTSTONE:brnsh blk-grysh blk,
mod hd-v hd i/p,blky-ang,occ
fiss,occ calc micro veins,
dissem pyr,occ f interlams w/
LMST.

LIMESTONE:mott lt-med gry,dk
gry-grysh blk,CLCSLT-CLCAR,xln
i/p,frm-occ mod hd,fri i/p,blky,



occ micr txt,com slty & arg grd to SLTST,f interbed w/ SLTST, dolom i/p w/ some suc aggs,no vis por.

SILTSTONE:brn-gry blk,hd-v hd, ang-blky,variably calc,com nod & disem pyr,mnr calcite micro veins,some calcite xln re-growth,com interlam w/ LMST.

LIMESTONE:mot lt-med gry w/ dk gry,gry blk,CLSLT,occ xln i/p, frm-occ mod hd,com fri,blky,occ micrtxt,v com slty & arg & grd to SLTST,finterbedded w/ SLTST, some suc agg,no vis por.

SILTSTONE:med dk gry-brn blk, hd-vhd,ang-blky,sl calc,mnr calcite re-growth,com nod & disem pyr,tr mnr calcite micro veins.

SANDSTONE:med lt gry,brn blk,brn blk,vf,hd-mod hd,ang-blky i/p,sbrnd sbang,w/ srt,calc cmt,slty,m/m, tr diem pyr,grd to SLTST,no vis por,n fluor.

LIMESTONE:med gry-med dk gry,gi brn i/p,CLCAR-CLSLT,xln,mod hd-frm,ool i/p,mnr suc tex,tr prple min,arg & grd to SLTST,nil-occ pr vis por,no fluor.

SILTSTONE:gry blk-brn blk,frm-hd, blky-ang,com disem pyr,occ calc incls,f LMST partings i/p,tr vf qtz grns.

SILTSTONE:gry blk-brn blk,mod hd-hd,blky-ang,mnr sub-platy, calc i/p,disem pyr,tr v f qtz, mnr calcite incls.

LIMESTONE:pl brn-brn gry,brn blk, CLSLT grd to CLCAR i/p,xln,fri-mod hd,suc i/p,rel ool,possible brn stns,tr oil blebs @ shkers, v pr vis por,possible pr inf por,no direct fluor.

LIMESTONE:brn gry-dk brn,med dk gry,CLCSLT,xln,micr-suc i/p, fri-mod hd,crmbly-blky,ool txt i/p,arg inc,occ lam SLTST,no vis por,no fluor.

SILTSTONE:brn blk-gry blk,gry brn, hd-frm,blky-occ sbfiss,ang i/p,grd to CLYST,micmic i/p,calc i/p w/ incls & layers,mnr calcite veining, disem pyr.

LIMESTONE:gry blk-brn blk-med gry,mott,xln,CLSLT-CLCAR i/p,fri-mod hd,fri-mod hd,crmbly-ang,ool frag,slty & occ qtz layers,suc tex i/p,tfoss frag,slty CLYST, occ dol,nil-occ v pr vis por,no direct fluor.

SANDSTONE:med gry-brn blk,vf, hd-mod hd,ang-blky,sbrnd-sbang, w/ srt,calc cmt,slty,micmic,tr disem pyr,grd toSLTST,n vis por, v dll yel fluor.

LIMESTONE:mott lt-med gry w/ gry brn-gry blk,xln,CLSLT-CLAR i/p, fri-mod hd,crmbly-ang,ool frag, slty & occqtz layers,suc tex i/p, tr foss frag,occ dol,nil-occ v pr vis por,no direct fluor.

SILTSTONE:brn blk-gry blk,gry brn, hd-frm,blky-occ sbfiss,occ sft-amorph& disp i/p,com grd-org rich CLYST,micmic i/p,mnr calc incls & layers,mnr calcite veining,disem nvr occv carb w/ coalv tex

FLW:148-275
SPP:450-1510psi

KCL-Polymer
& Residrill
MW: 9.0
pH: 8.5
vis: 38

KCL-Polymer
& Residrill
MW: 9.0
pH: 8.5
vis: 37

1150

1175

1200

1225

1250

1275

60/27/10/2/1

89.0° 15.3M

68/24/7/1/Tr

88.1° 15.2M

65/25/8/1/1

87.4° 15.2M

67/25/6/1/tr

86.5° 15.1M

52/27/13/6/2

87.5° 14.7M

56/23/12/9

89.0° 14.7M

60/20/12/8

89.4° 14.6M

49/20/15/16

90.0° 14.5M

60/18/10/10/2

90.1° 14.5M

90.2° 14.3M

73/17/5/5

89.7° 13.8M

88.8° 13.9M

70/19/6/4/1

89.4° 14.1M

68/20/7/3/2

90.2° 13.8M

LIMESTONE(Tr):mott lt-med gry w/
gry brn to gry blk,xln,CLSLT-CLCAI
i/p,fri-mod hd,crmbly-ang,ool frag,
silty i/p,suc tex i/p,tr foss frag,
occ dol,nil vis por,no direct fluor.

SILTSTONE:gry blk-olv blk,frm-moc
hd,blky-sbfiss,sft-amorph i/p-occ
disp,grd to org rich CLYST,occ v
carb w/coaly tex,com disem pyr,
occ micmic,occ calc incls & layers,
tr veins,trqtz veins.

DOLOMITE:v lt gry-brn gry,
DOLOSLT,xln,frm-hd i/p,ang-
crmbly,calcincils & micro lam,grd
to LMST i/p,com arg,disem pyr,
no vis por,dilyel minfluor,no
direct hydrocarbon fluor.

DOLOMITE:v lt gry-brn gry-pl brn,
DOLOAR-DOLOSLT,xln,frm-hd i/p,
ang-crmbly,suc i/p,calc incls &
micro lam,grd to LMST i/p,com lt
brn-locblk staining,vugs filled w/
bit mat & secondary min,disem pyr,
tr lse qtz grs,no vis por-loc pr
por & inf vug por,dll yel min
fluor,no fluor.

SILTSTONE:gry blk-olv blk,frm-
mod hd,blky-sbfiss,carb grd to
CLYST i/p,com disem pyr,occ
micmic,occ calc incls & layers,
calcite veins.

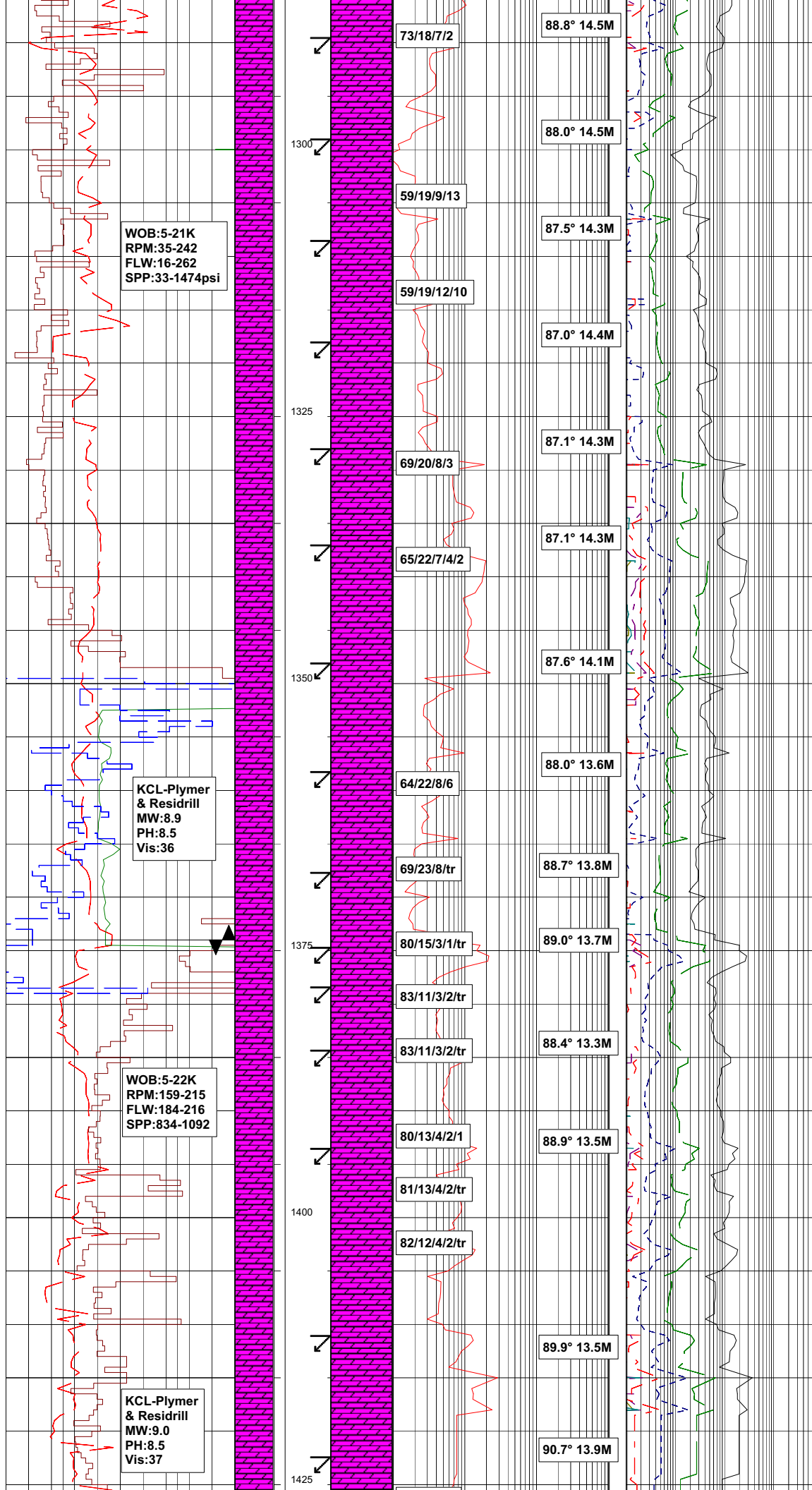
DOLOMITE:v lt gry-dk brn gry-pl
brn,DOLOAR-DOLOSLT,xln,frm-hd
i/p,ang-crmbly,suc i/p,occ grd to
LMSTi/p,occ vugs filled w/ bit mat,
somelrg rhombs of clear trnsf min,
disem pyr,tr styol,nil-occ pr vis
por,pr-fr,secondary por & vug por,
dll yel min fluor,no direct
hydrocarbon fluor,no cut.

BIT#8RR:PDC
MODEL:DP406
S/N:7025543
JETS:5x11,2x12
IN:1243m OUT:1351m
RUN:108m HRS:7.8
COND:2-3-CT-6-X-1-RO-PR

SILTSTONE:gry blk-olv blk,frm-moc
hd,blky-sbfiss,carb grd to CLYST
i/p,com disem pyr,occ micmic,occ
calc incls & lays,calcite veins.

DOLOMITE:v lt gry-pred dk brn
gry,rr pl brn,DOLOAR-DOLOSLT,
xln,frm-hd i/rr v hd,ang-occ
vugs filled w/ bit mat,rr
whombic gypsum,occ disem pyr,
tr styol,nil-occ pr vis por,
pr-fr inf secondary por & vug
por,dll org yel min fluor,no
direct fluor,no cut.

DOLOMITE:pl brn gry-lt gry-med
gry,occ brn blk,DOLOAR-DOLOSLT



WOB:5-21K
RPM:35-242
FLW:16-262
SPP:33-1474psi

KCL-Plymer
& Residrill
MW:8.9
PH:8.5
Vis:36

WOB:5-22K
RPM:159-215
FLW:184-216
SPP:834-1092

KCL-Plymer
& Residrill
MW:9.0
PH:8.5
Vis:37

73/18/7/2

88.8° 14.5M

59/19/9/13

88.0° 14.5M

59/19/12/10

87.5° 14.3M

69/20/8/3

87.0° 14.4M

65/22/7/4/2

87.1° 14.3M

64/22/8/6

87.6° 14.1M

69/23/8/tr

88.0° 13.6M

80/15/3/1/tr

88.7° 13.8M

83/11/3/2/tr

89.0° 13.7M

83/11/3/2/tr

88.4° 13.3M

80/13/4/2/1

88.9° 13.5M

81/13/4/2/tr

82/12/4/2/tr

89.9° 13.5M

90.7° 13.9M

hd-v hd i/p,occ fri,ang-sbang,
rr sbfiss,com suc,midly calc,
grd to LMST,com chert,disem
pyr,tr styol,occ rhombic
gypsum,tr qtz slt,no-v pr vis
por,pr inf por,dll yel min
fluor,no cut.

DOLOMITE:pl brn gry-lt gry-med
gry,occ brn blk,DOLOAR-DOLOSLT
hd-v hd i/p,occ fri,ang-sbang,
rr sbfiss,com suc,sl calc,grd
to LMST,com chert,disem pyr,tr
styol,occ rhombic gypsum,tr qtz
slt,no-v pr vis por,pr inf por,
dll yel min fluor,no cut.

DOLOMITE:pl brn gry-med gry,
com brn blk,DOLOAR-DOLOSLT,
hd-v hd i/p,occ fri,ang-sbang,
rr sbfiss,com suc,midly calc,
grd to LMST,occ grd to CLYST,
com chert,disem pyr,tr styol,
occ bit mat in vug & frac,occ
rhombic gypsum,tr qtz slt,no-v
pr vis por,pr inf por,dll yel
min fluor,no cut.

DOLOMITE:pl brn-gry-med gry,
com brn-blk,DOLOAR-DOLOSLT,
hd-v hd,ang-sbang,sucr,sl calc
grd to LST,sl-mod arg,occ cht,
tr-com disem pyr,tr styl,occ-
com bit pore fill,occ gypsum,
occ calcit vn,tr qtz slt,no-v pr
vis por,pr inf por,sblky-sbfiss,
com trans grn frac,occ dl yel
min fluor,no cut.

BIT#9:PDC
MODEL:DP405
S/N:7025545
SIZE:6 1/8" JETS:2x18,1x16
IN:1351m OUT:1352m
RUN:1m
COND:0-0-NO- -0-I-NO-DMF

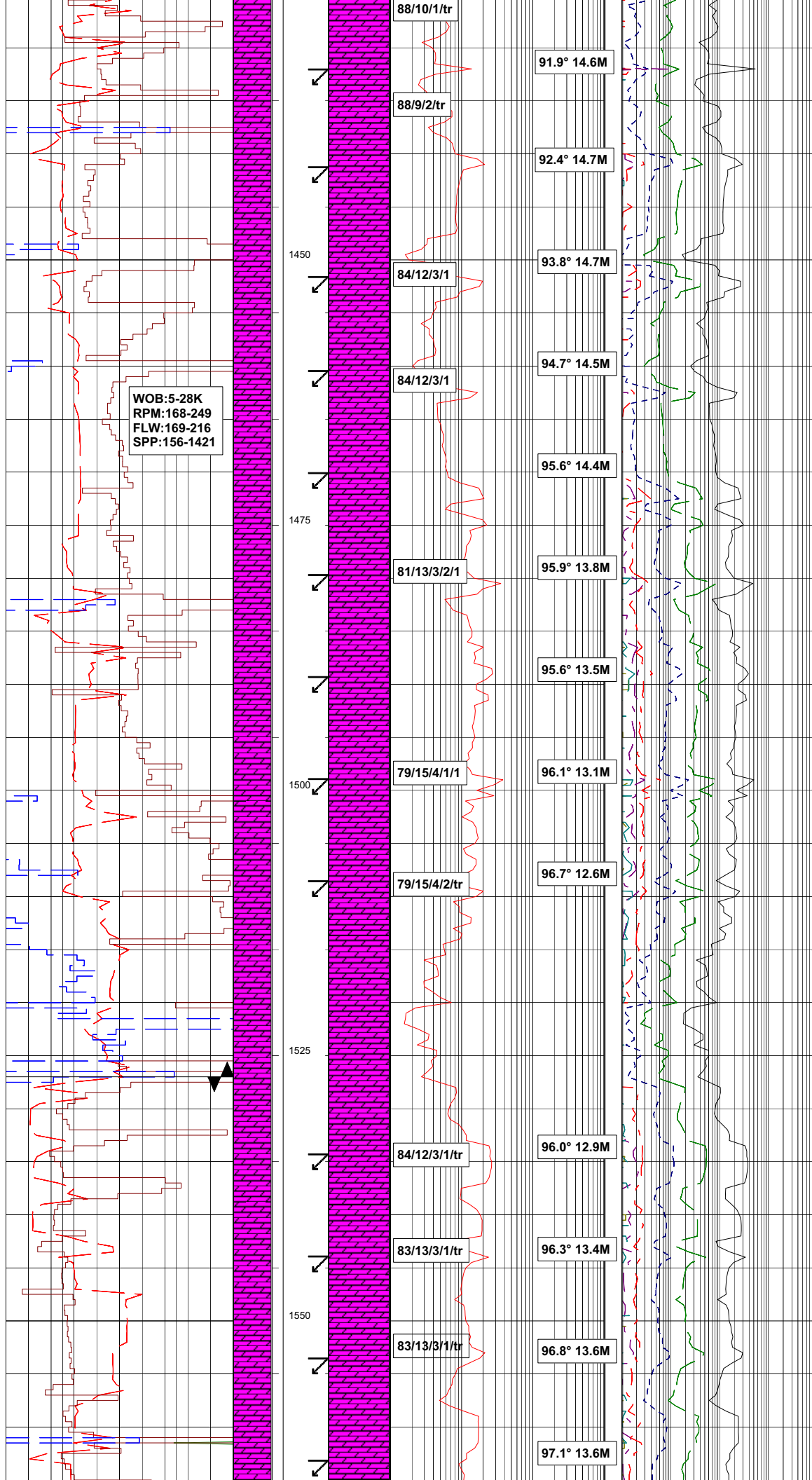
BIT#7RR:TRICONE
MODEL:STX-DX50DX
S/N:5192233
SIZE:6 1/8" JETS:5x11,2x12
IN:1352m OUT:1374m
RUN:22m
COND:I-01-D-L-B-6-02-R

BIT#9RR:PDC
MODEL:DP406
S/N:7025545
SIZE:6 1/8" JETS:5x11,2x12
IN:1374m OUT:1527m
RUN:153m
COND:3-4-CT-A-X-1-RO-PR

SILTSTONE (Tr):dk gry-gry blk,
occ olv blk,frm-mod hd,ang-
bkly,com disem pyr,occ micmic,
occ calc incl & layers,calcite
micr vn.

DOLOMITE:brn gry-med gry,
com brn blk,DOLOAR-DOLOSLT,
fm-hd i/p,fri i/p,ang-sbang,
com suc,sl calc,sl-mod arg i/p,
sl-mod arg,occ cht,tr-com
disem pyr,tr styl,occ rho
gypsum,occ calcit vn,no-v
pr vis por,pr inf por,
no fluor.

DOLOMITE:pl-dk yel brn,
com brn blk,DOLOAR-DOLOSLT,
hd-v hd i/p,occ fri,ang-sbang,
com suc,sl calc,sl-mod arg i/p,
occ-abd cht,tr-com disem pyr,tr
styl,occ rho gypsum,occ calcit
& gypsum vn,no-v pr vis por,pr
inf por,occ dl yel min fluor,
no cut.



No records from 1418m-1424m
System down, trouble shoot.

DOLOMITE: v pl-med, occ dk gry
brn, rr brn blk, DOLOAR-DOLOSLT,
hd-v hd i/p, occ fri, ang-sbang,
com suc, sl calc, sl-mod arg i/p,
occ cht, tr-com disem pyr, tr styl,
occ calcit & gypsum vn, no-v pr
vis por, pr inf por, occ dll yel
min fluor, no cut.

DOLOMITE: pl brn-dk gry brn, com
med gry brn, rr brn blk, DOLOAR-
DOLOSLT, vf-f, wl srt, ang-sbang,
com suc, sl calc, sl-mod arg i/p,
com cht, tr-com disem pyr, tr
styl, occ rho gypsum vn, hd-v hd
i/p, occ fri, no-v pr vis por, pr
inf por, occ dll yel min fluor,
no cut.

DOLOMITE: dk gry brn-pred
med gry brn, rr brn blk, DOLOAR-
SOLOSLT, vf-f, wl srt, ang-sbang,
com suc, sl calc, sl-mod arg i/p,
com cht, tr-com disem pyr, tr styl,
occ rho gypsum, occ calcite, dol &
gypsum vn, hd-v hd i/p, occ fri,
no-v pr vis por, pr inf por, occ
dll yel min fluor, no cut.

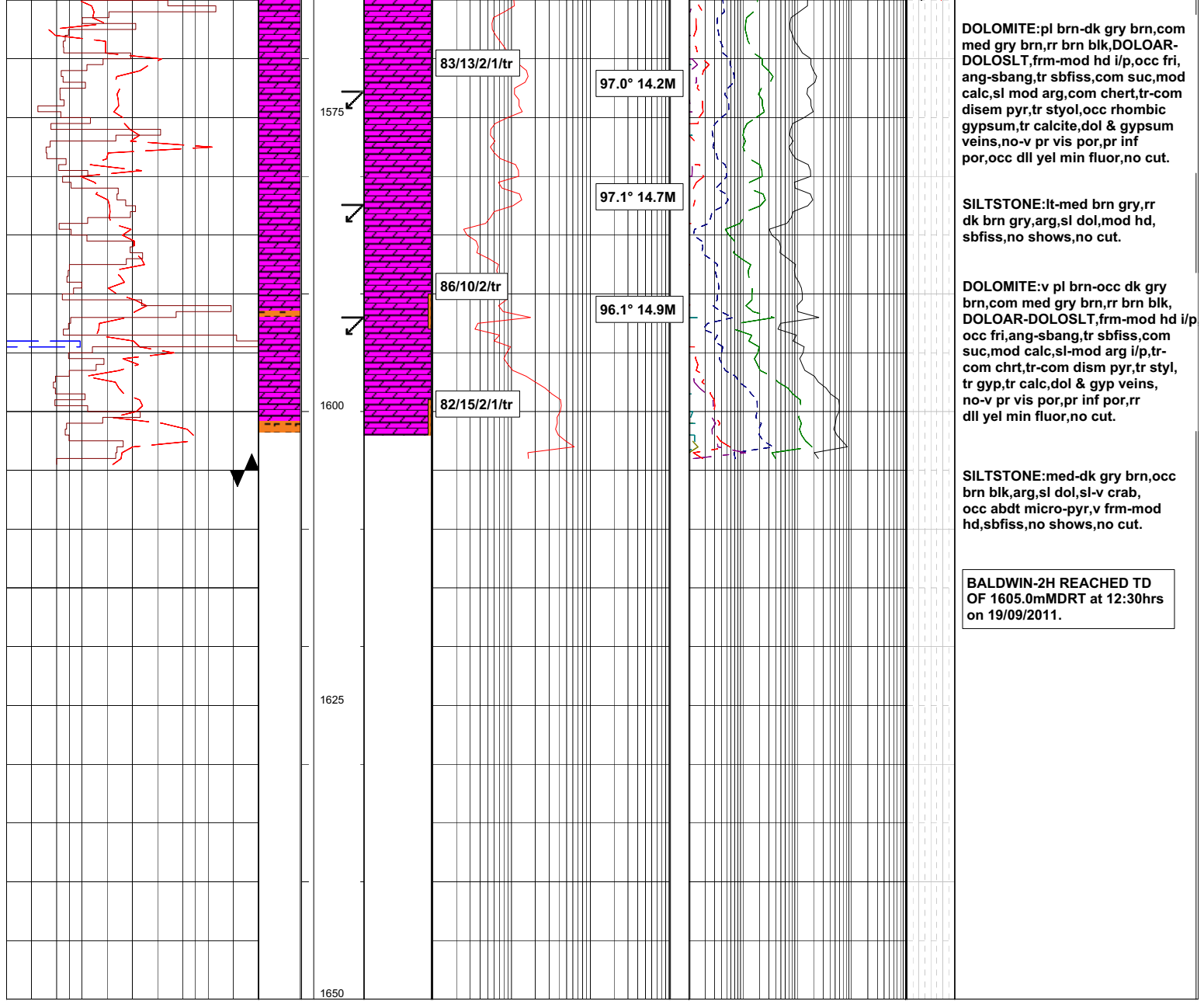
DOLOMITE: pl brn-dk gry brn,
com med gry brn, rr brn blk,
DOLOAR-SOLOSLT, vf-f, mod
hd-v hd i/p, occ fri, ang-sbang,
tr sbfis, com suc, mod calc, sl-
mod arg i/p, tr cht, tr-com disem
pyr tr stylo, occ rho gypsum, tr
calcite, dol & gypsum vn, no-v
pr vis por, pr inf por, occ
dll yel min fluor, no cut.

DOLOMITE: v lt gry-pl brn-occ
dk brn gry, DOLOAR-SOLOSLT,
frm-mod hd, hd i/p, ang-crumbly,
com suc, calc, occ grd to LST i/p,
tr cht, tr vugs fill w/ bit matt,
occ rho gypsum, com disem pyr, tr
stylo, nil-occ v pr vis por, pr inf
por, occ dll yel min fluor, no cut.

BIT#10:PDC
MODEL:DP405
S/N:7025542
SIZE:6 1/8" JETS:2x18,1x16
IN:1527m OUT:1605m
RUN:78m
COND:3-4-BT-A-X-1-TR-DTF

DOLOMITE: pl brn-dk gry brn, com
med gry brn, rr brn blk, DOLOAR-
SOLOSLT, frm-mod hd i/p, occ fri,
ang-sbang, tr sbfis, com suc, mod
calc, sl-mod arg, tr cht, tr-com
disem pyr, tr stylo, occ rho
gypsum, tr calcite, no-v por vis
por, pr inf por, occ dll yel min
fluor, no cut.

DOLOMITE: pl brn-dk gry brn, com
med gry brn, rr brn blk, DOLOAR-
SOLOSLT, frm-mod hd i/p, occ fri,
ang-sbang, tr sbfis, com suc, mod
calc, sl-mod arg, tr cht, tr-com
disem pyr, tr stylo, occ rho
gypsum, tr calcite, dolomite &
gypsum vn, no-v por vis por, pr
inf por, occ dll yel min fluor,
no cut.



DOLOMITE:pl brn-dk gry brn,com med gry brn,rr brn blk,DOLOAR-DOLOSLT,frm-mod hd i/p,occ fri, ang-sbang,tr sbfiss,com suc,mod calc,sl mod arg,com chert,tr-com disem pyr,tr styol,occ rhombic gypsum,tr calcite,dol & gypsum veins,no-v pr vis por,pr inf por,occ dll yel min fluor,no cut.

SILTSTONE:lt-med brn gry,rr dk brn gry,arg,sl dol,mod hd, sbfiss,no shows,no cut.

DOLOMITE:v pl brn-occ dk gry brn,com med gry brn,rr brn blk, DOLOAR-DOLOSLT,frm-mod hd i/p occ fri,ang-sbang,tr sbfiss,com suc,mod calc,sl-mod arg i/p,tr-com chrt,tr-com dism pyr,tr styl, tr gyp,tr calc,dol & gyp veins, no-v pr vis por,pr inf por,rr dll yel min fluor,no cut.

SILTSTONE:med-dk gry brn,occ brn blk,arg,sl dol,sl-v crab, occ abdt micro-pyr,v frm-mod hd,sbfiss,no shows,no cut.

BALDWIN-2H REACHED TD OF 1605.0mMDRT at 12:30hrs on 19/09/2011.