

















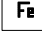
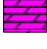
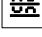






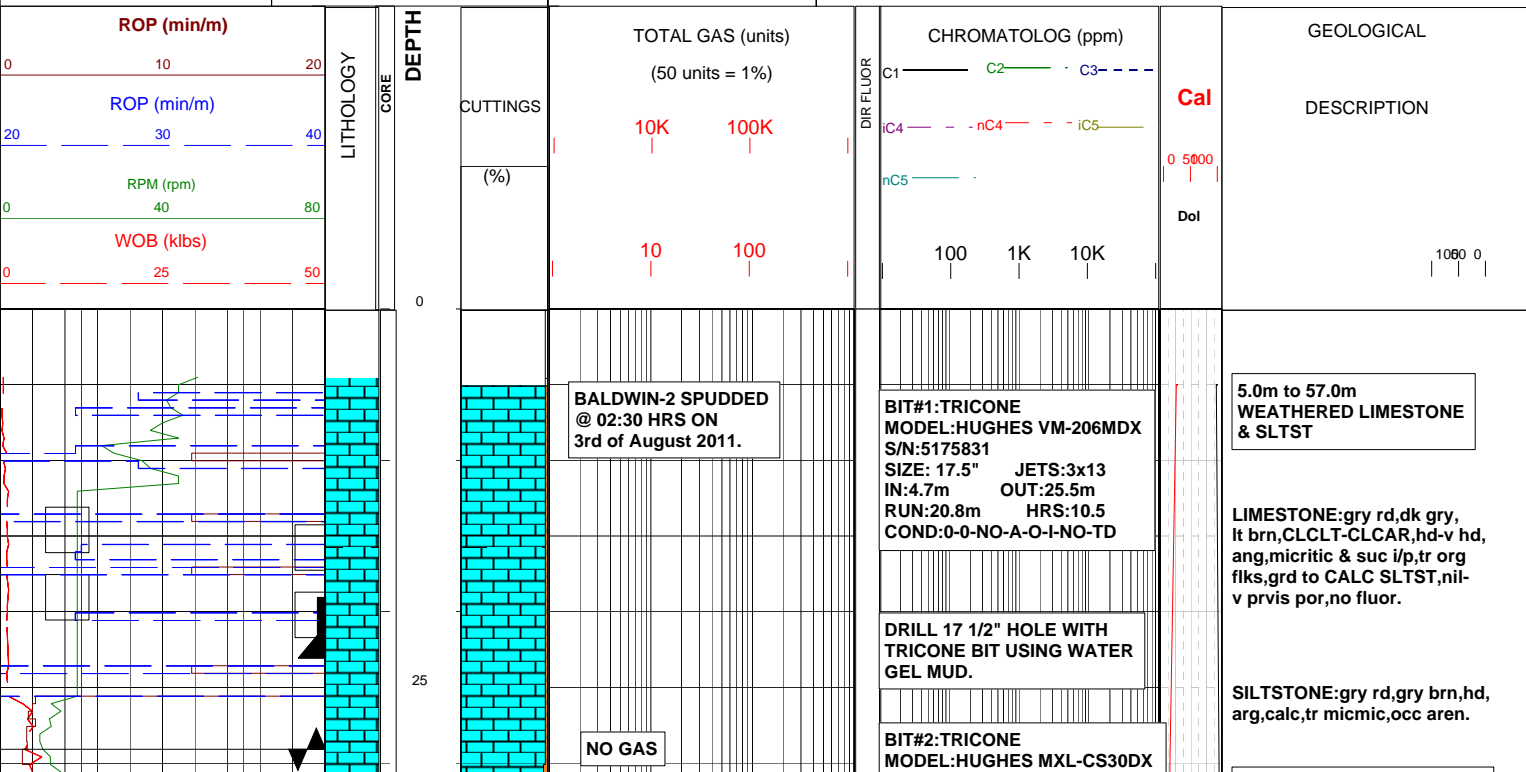


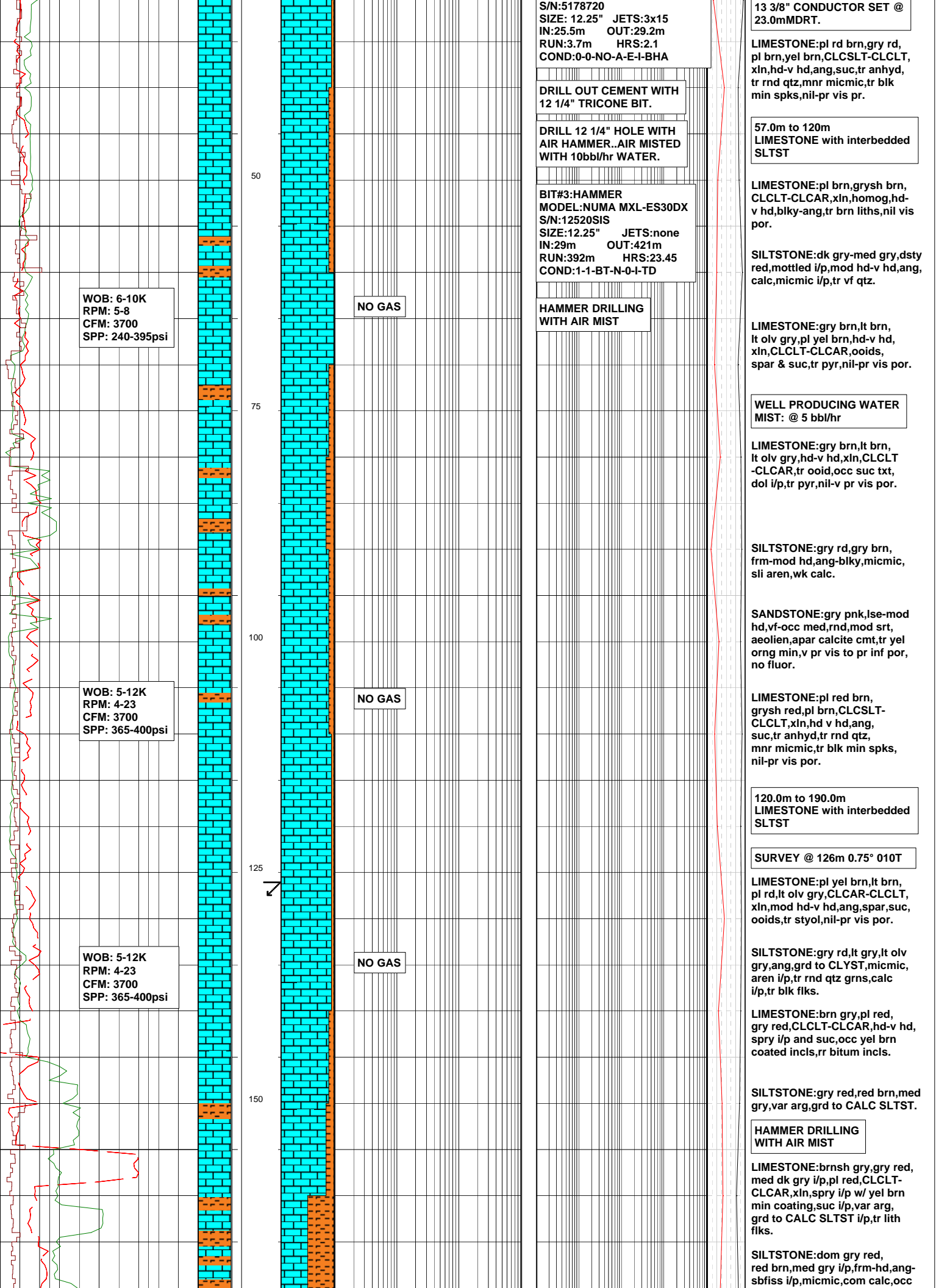
# BALDWIN 2

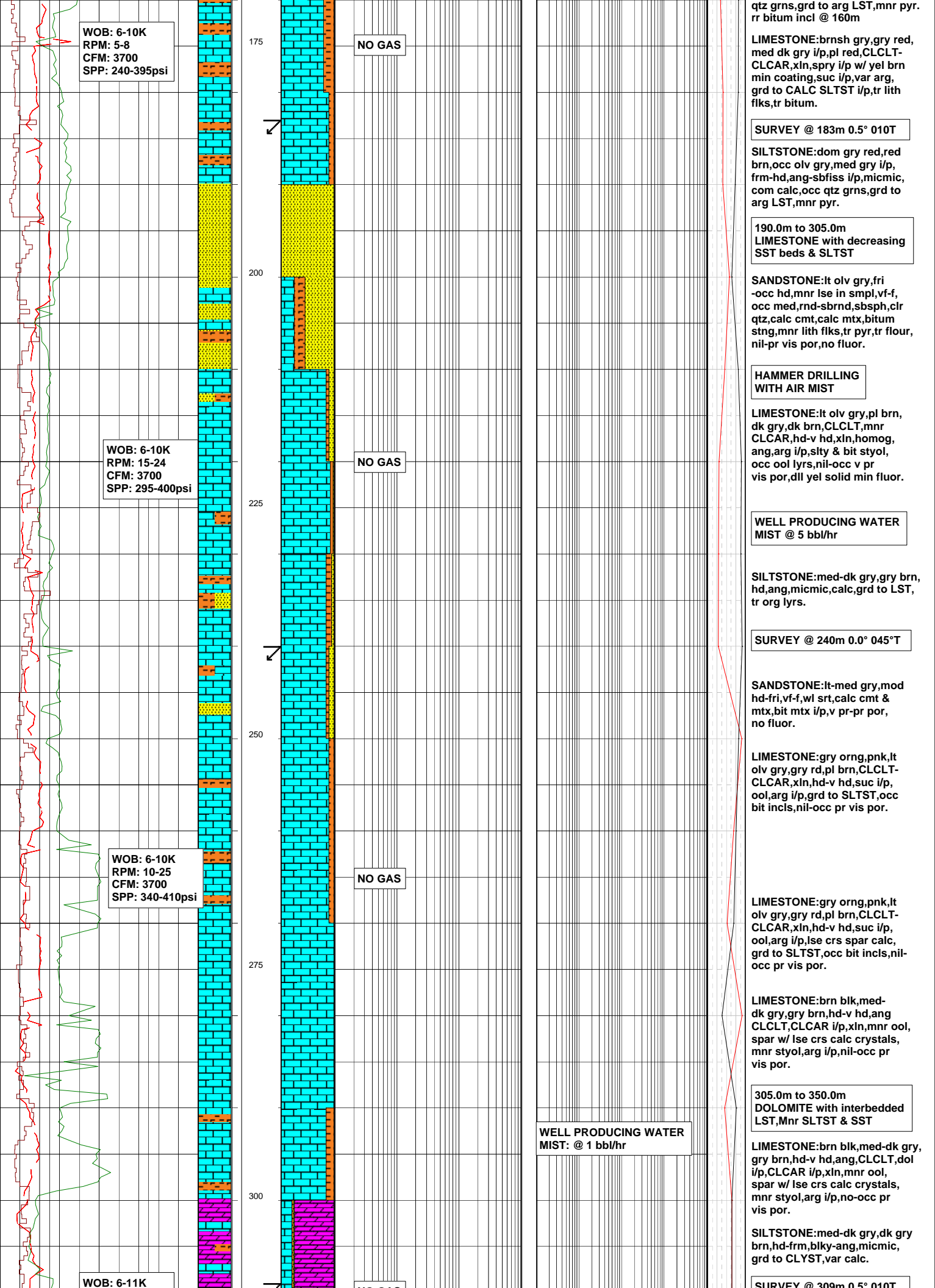
## MASTERLOG

Field : Baldwin	Rotary Table: 352.08m	Rig : Schramm TXD 200	Open Hole:	Cased Hole:	Loggers : A.Sullivan
Permit : EP-103	Ground Level : 348.38m	Spud Date : 03/08/11	17 1/2": 29.0m	13 3/8": 23.0m	K.Nikkhah
State : Northern Territory	Datum: GDA 94	TD Date : 22/08/11	12 1/4": 421.0m	9 5/8": 417.8m	A.Poetsch
Country : Australia	Lat. : 22deg15'49.76" S	Total Depth : 950.0m	8.5" : 950.0m	7": 515.0m	G.MacEachern
Scale: 1/ 500	Long. : 136deg02'19.36" E	Final Status : Plugged & Suspended			

LITHOLOGY	ACCESSORIES	DRILLING DATA	ABBREVIATIONS
 Coarse sand	 Pyrite	 Casing shoe	BOPD - Barrels of Oil Per Day      OG - Over Gauge
 Medium sand	 Glaucanite	 Deviation survey	BWPD - Barrels of Water Per Day      OH - Open Hole
 Silty Sandstone	 Mica	 Dst	CG - Connection Gas      OTS - Oil To Surface
 Siltstone	 Chert	 Core	CO - Circulate Out      Q - Flow Rate
 Carb Siltstone	 Pyrite	 Wiper Trip	COND - Condensate      REC - Recovery
 Claystone	 Fossils	<b>MUD DATA</b>	c/c - Crush Cut      Rmf - Resistivity mud filtrate
 Limestone	 Iron	MW - Mud Weight (lb/gal)	DST - Drill Stem Test      ROP - Rate Of Penetration
 Dolomite	 Breccia	FV - Funnel Viscosity (s/qt)	FLOW - Flow Rate (gal/min)      RPM - Revolutions Per Minute
 Coal	 Argillaceous	PV - Plastic Viscosity (cps)	GCM - Gas Cut Mud      RTSTM- Rate Too Small To Measure
 Granit	 Carbonaceous	YP - Yield Point (lb/100ftsq)	GCW - Gas Cut Water      Rw - Resistivity water
 Volcanic rock	 Foraminifera	Gel - Gel Strength (10sec)	GTS - Gas To Surface      r/r - Ring Residue
		WL - Water Loss (cc/30min)	INJ - Injection of Mist (bbls/hr)      SCFM - Standard Cubic Ft/Min (air)
		pH - Acidity / Alkalinity	LCM - Lost Circulation Material      SGCM - Slightly Gas Cut Mud
		Ck - Cake (32nd/inch)	MMCFD - Million Cubic Feet / Day      SPM - Strokes Per Minute
		Sol - Solids (% vol)	NGTS - No Gas To Surface      SPP - Stand Pipe Pressure
		Cl - Chlorides (mg/l)	NOTS - No Oil To Surface      SWC - Side-Wall Core
			NR - No Returns      TG - Trip Gas
			OCM - Oil Cut Mud      WOB - Weight On Bit







RPM: 10-25  
CFM: 3700  
SPP: 370-440psi

WOB: 7-11K  
RPM: 5-25  
CFM: 3700  
SPP: 405-480psi

WOB: 6-11K  
RPM: 10-38  
CFM: 3700  
SPP: 370-440psi

NO GAS

NO GAS

NO GAS

NO GAS

BIT#4:TRICONE  
MODEL:HUGHES MXL-DS44CDX  
S/N:5191787  
SIZE: 8.5" JETS:3x20  
IN:421m OUT:950m  
RUN:529m HRS:41.27  
COND:3-1-CT-C-4-I-BT

9 5/8" SURFACE CASING SET  
@ 417.8mMDRT.

TOP HAGEN MEMBER:  
438.0mMDRT(-84.9mTVD)

SURVEY @ 366m 0.5° 035T

DOLOMITE:pl brn-brn gry,  
CLCLT-CLCAR,xln,suc i/p,hd-  
v hd,ang,mnr vugs w/ calc fill,  
mnr org flks,arg & carb lys,lr  
bitum,nil-v pr vis por,no fluor.

SANDSTONE:(tr)v pl brn,v lt  
olv gry,hd-fri,vf,wl srt,sbrnd,  
mnr f-rr med qtz,var calc cmt  
& mtx,occ bitum,blk min flks,v pr  
-occ fr vis por,no fluor.

LIMESTONE:med lt gry,lt olv  
gry,med-dk gry,com lse spar  
calc,fri-lse xln,w/ mnr bitum  
coated,dol i/p,

DOLOMITE:lt gry-lt olv gry,  
CLCLT,xln,v hd-fri,ang,suc,mnr  
styol,rr ooids,mnr vugs,nil-pr  
vis por,dll yel min fluor.

Com lse spar calcite,occ bitum  
coated grs.

LIMESTONE:as above,dol i/p.

350.0m to 405.0m  
DOLOMITE with interbedded  
LST, Mnr SST beds

LIMESTONE:med lt gry-lt olv  
gry,med gry i/p,CLCLT,xln,  
micritic txt i/p,v hd-occ fri,  
ang-crmby,occ suc txt,arg i/p,  
dol i/p,rr ooids,v pr vis por i/p.

SURVEY @ 366m 0.5° 035T

DOLOMITE:wht,hd-v hd,ang,  
spry frac fill & replacement  
of calc,mnr assoc fluorite,  
agate,interstit bitum.

DOLOMITE:pl brn,hd,ang,suc,  
calc filled vugs,tr bitum,nil-  
mnr pr vis por,no fluor,discont  
anhyd strm & lysr.

SILTSTONE:dk gry-brn blk,  
hd-mod hd,ang,tr pyr.

LIMESTONE:med gry-grysh brn,  
CLCLT,xln,hd-v hd,dol,mnr pyr,  
nil vis por.

405.0m to 429.0m  
Dolomite with thin SST beds

SANDSTONE:pl yelsh brn,mod  
hd-hd,v f grns,wl srt,sbrd,sbsph,  
calc cmt & mtx,blk min spks,  
dissem pyr,mnr silty lysr,nil-  
v pr vis por,no fluor.

DOLOMITE:pl yelsh brn,pl brn,  
brn gry,DOLOAR,hd w/ com lse  
spry dol grns,mnr bitum coated  
grns,tr dead oil stng,nil-pr inf  
por,yel solid min fluor,no direct  
hydrchrn fluor,no cut fluor.

DOLOMITE:lt olv gry-lt brn,  
DOLOSLT,xln,mod hd-hd,brit,  
ang,tr styol,tr min flks,nil-v  
pr vis por,dll yel solid min fluor.

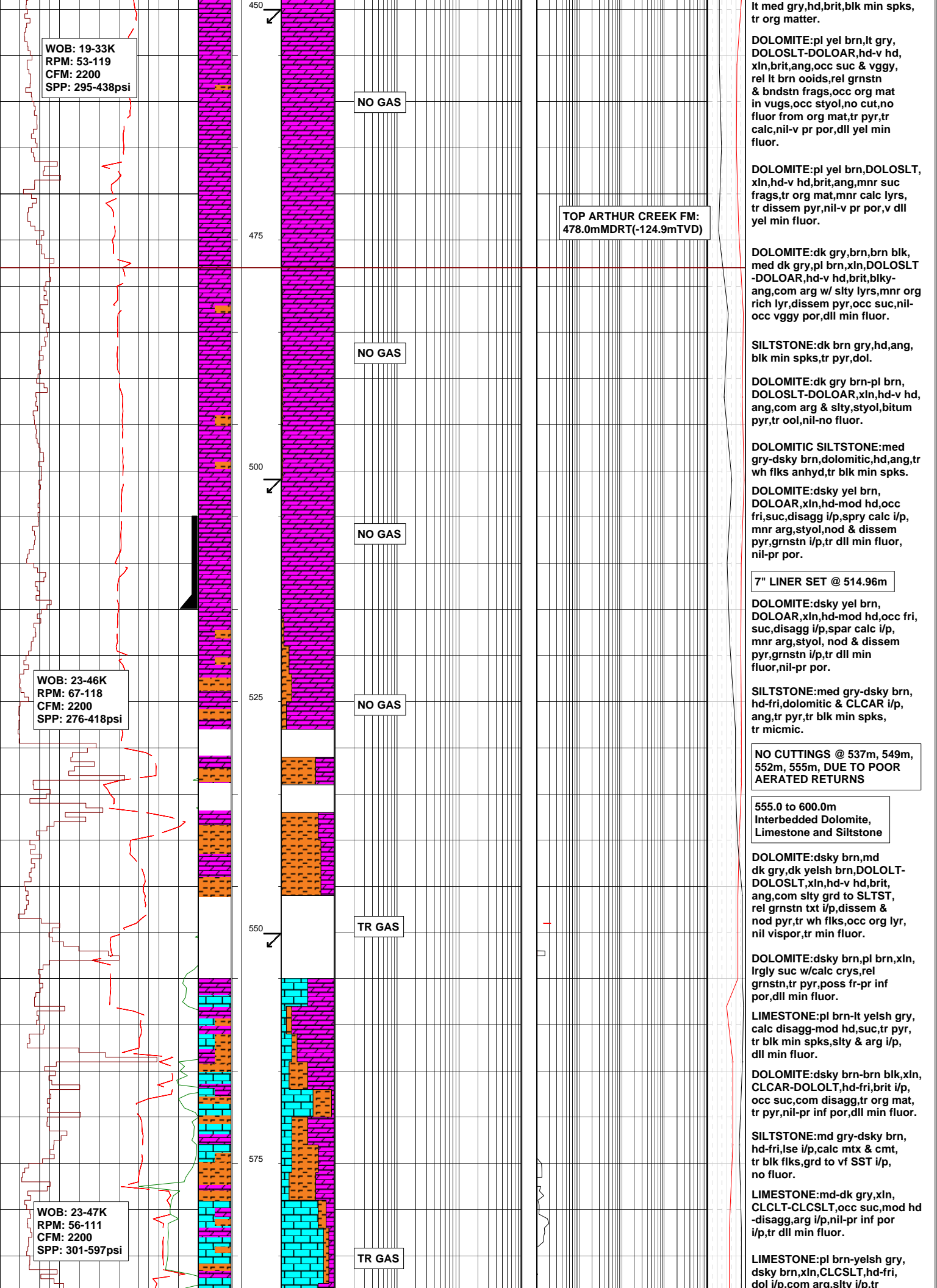
DOLOMITE:pl brn-pl yel brn,  
DOLOLT-DOLOAR,xln,mod hd-  
v hd,rr fri,brit,suc i/p,tr  
styols,bndstn i/p,tr pyr,nil  
-occ pr vis por,mnr vgyg por,  
dll yel min fluor.

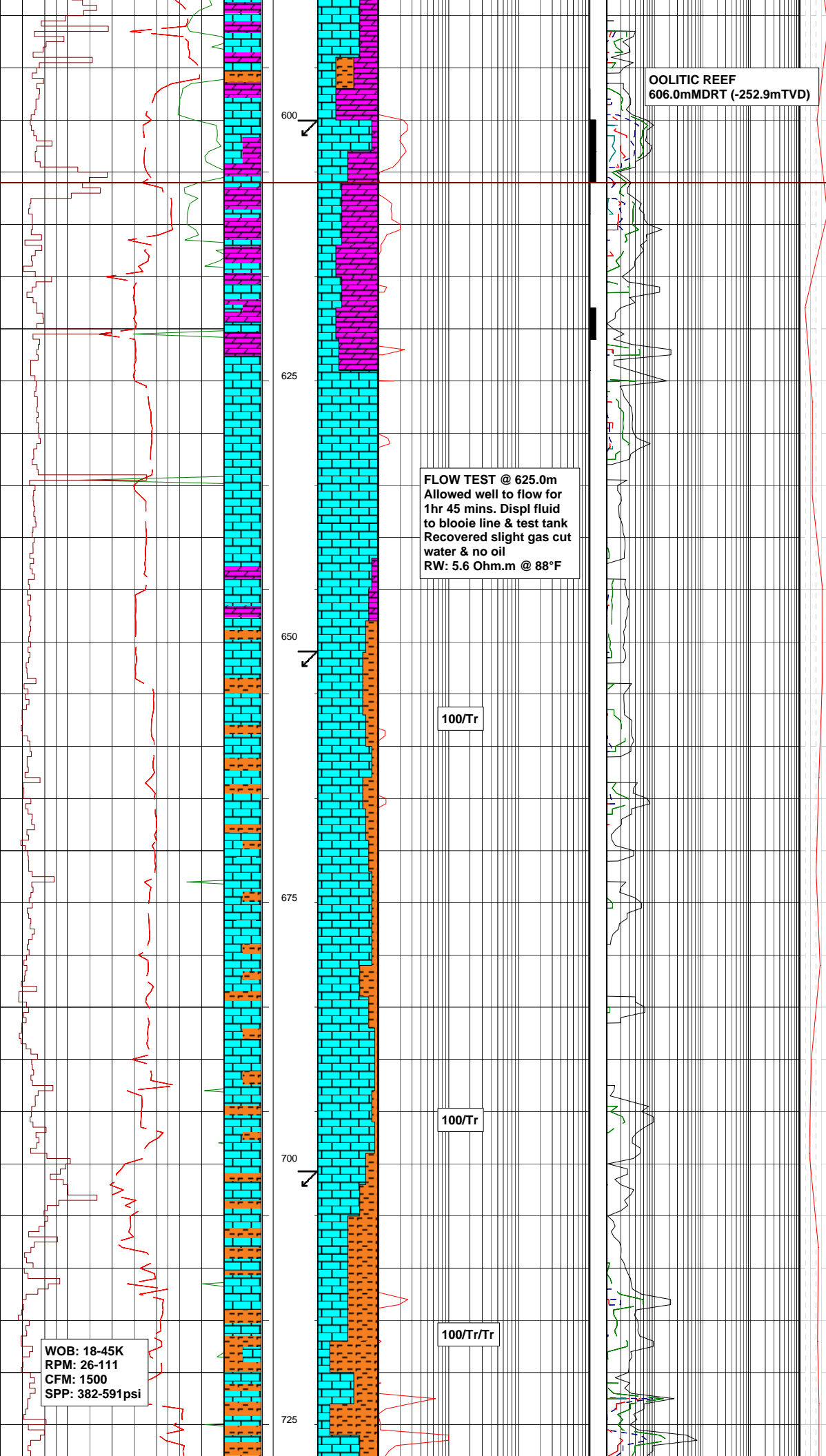
429.0m to 468.0m  
DOLOMITE w/ tr Calc SLTST

DOLOMITE:pl yel brn,lt olv  
gry,brn blk-gry blk i/p,xln,  
DOLOLT-DOLOAR,mod hd-hd,  
suc & fri i/p,tr spry calc,tr qtz  
grns,rel ooids,rel grnsth,mnr  
aren lyr,tr bitum mat,nil-pos  
fr vgyg por,dll yel min fluor.

468.0m to 555.0m  
DOLOMITE w/ Siltstone beds

CALCAREOUS SILTSTONE:





OOLITIC REEF  
606.0mMDRT (-252.9mTVD)

FLOW TEST @ 625.0m  
Allowed well to flow for  
1hr 45 mins. Displ fluid  
to blooie line & test tank  
Recovered slight gas cut  
water & no oil  
RW: 5.6 Ohm.m @ 88°F

100/Tr

100/Tr

100/Tr/Tr

WOB: 18-45K  
RPM: 26-111  
CFM: 1500  
SPP: 382-591psi

org matter, tr rel grnstr, nod pyr,  
dll min fluor, nil-pr inf por.

SILTSTONE: med gry-olv gry, lse  
-fri, calc cmt, tr org mat, tr pyr.

600.0m to 650.0m  
LIMESTONE w/ Dolomite  
and Siltstone

DOLOMITE: dsky yel brn, dk  
olv gry, DOLOSLT, xln, hd-fri,  
brit i/p, arg, tr styol, tr pyr,  
tr dll min fluor.

dll thn res yel grn rr on  
crush cut from 600-606m,  
no dir fluor.

LIMESTONE: lt gry, pl brn i/p,  
CLCAR, xln, mod hd-fri, brit, com  
dissag grns, nil-pr inf por,  
tr min fluor.

DOLOMITE: pl brn-mod brn,  
DOLOSLT-DOLOAR, xln, mod  
hd, fri-brit, arg i/p, org mat, rel  
grnstr, suc i/p, vgggy w/ tr anhyd,  
nil-occ fr inf por, tr min fluor.

dll yel grn res rr on crush cut  
from 618-621m, no dir fluor.

LIMESTONE: dsky yel brn,  
dk gry brn, CLCLT-CLCSLT,  
mod hd-v hd, ang-brit, var arg,  
styol, bitum i/p, occ suc, nod &  
dissem pyr, grd to SLTST, tr  
anhyd, tr min spks, nil vis por.

SILTSTONE: brn blk, dsky yel  
brn, hd, ang, blk, calc, tr org  
matter.

650.0m to 868.0m  
LIMESTONE w/ Siltstone beds

LIMESTONE: dsky yel brn,  
drk gry brn, CLCLT-CLCSLT,  
mod hd-v hd, ang, brit, tr rel  
grnstr, occ DOLOMITE, var  
arg, styol, grd to CALC CLYST,  
tr pyr nodes, tr min flks, nil  
vis por.

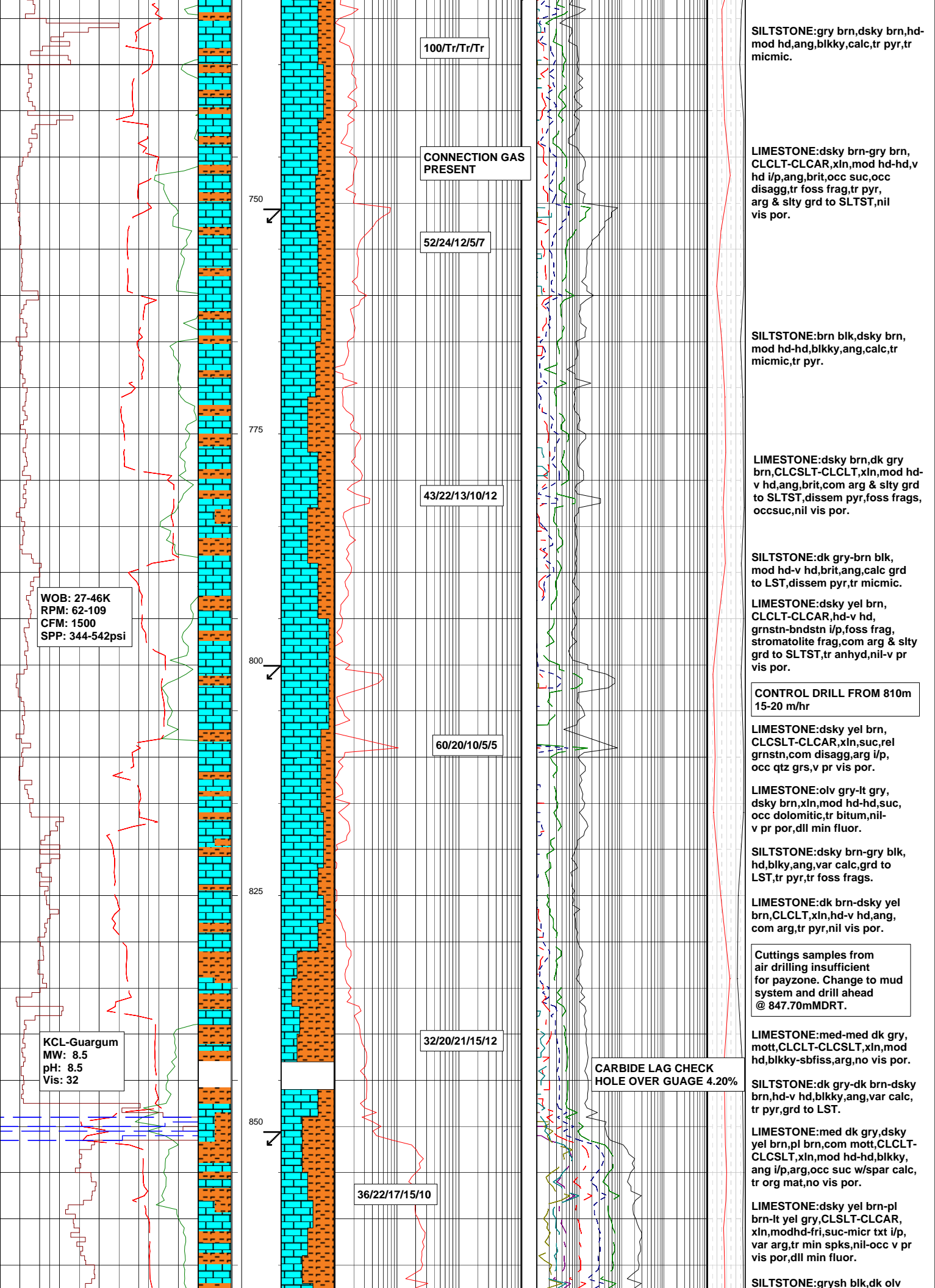
SILTSTONE: dk gry brn, dk brn,  
hd-mod hd, calc, ang-blky, tr  
pyr.

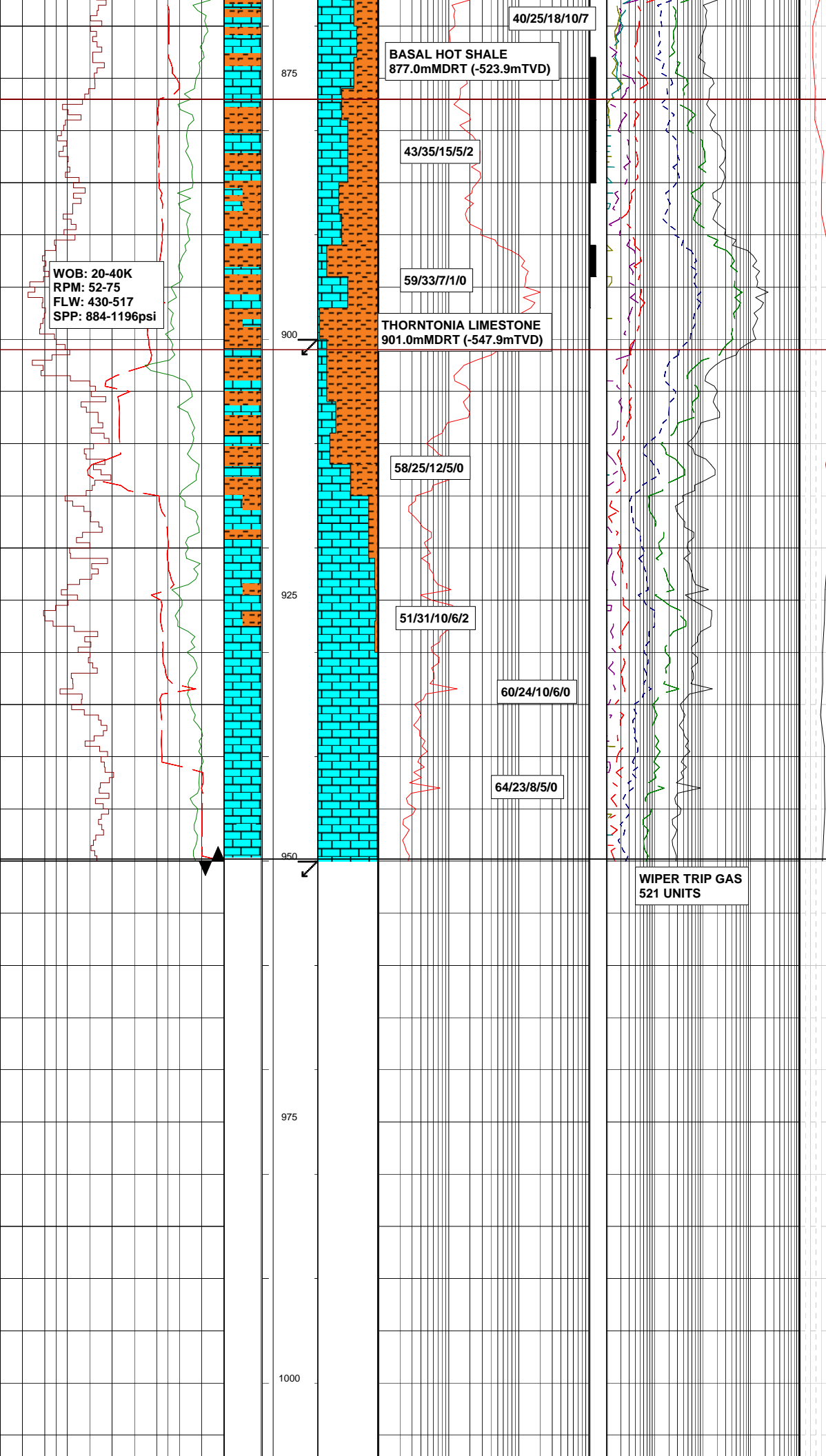
LIMESTONE: dsky yel brn,  
dk gry brn, dsky brn, CLCLT-  
CLCSLT, xln, mod hd-v hd i/p,  
ang, mnr micritic txt, tr rel grnstr,  
occ suc & dissag arg grd to  
SLTST, tr dissem pyr, tr anhyd,  
nil-occ pr vis por, no fluor.

LIMESTONE: dsky brn-dk  
gry brn, CLCSLT-CLCLT, xln,  
mod hd-v hd i/p, brit, ang, occ  
suc, arg & slty, foss frag, tr rem  
grnstr, nil vis por.

LIMESTONE: dsky yel brn,  
CLCLT-CLCSLT, mod hd-hd, ang,  
brit, com arg & slty grd to SLTST,  
tr pyr, tr org mat, nil vis por.







40/25/18/10/7

**BASAL HOT SHALE**  
877.0mMDRT (-523.9mTVD)

43/35/15/5/2

59/33/7/1/0

**THORNTONIA LIMESTONE**  
901.0mMDRT (-547.9mTVD)

58/25/12/5/0

51/31/10/6/2

60/24/10/6/0

64/23/8/5/0

**WIPER TRIP GAS**  
521 UNITS

gry,dsky brn,mott,mod hd-hd,  
blkky-ang,brit,var calc,tr  
vf qtz,tr micmic,tr plty foss  
frags,bitum odour @ shakers.

**SHOW: 874.0-877.0**  
SILTSTONE:thk mod brt  
yel grn rr after crush cut.

**LIMESTONE:**yelsh gry,pl brn  
i/p,dsky yelsh brn,CLCSLT-  
CLCAR,xln,micr txt-suc,oidal  
i/p w/ dk gry ooids,mod hd-fri,  
occ dol,tr slty rnd qtz res,arg  
i/p,poss lt brn oil stn,nil-occ pr  
vis por w/ some vggy por.

**SHOW: 879.0-885.0m**  
LIMESTONE:dll thn yel  
rr after crush cut.

**SHOW: 891.0-894.0m**  
SILTSTONE:thk dll yel  
grn rr after crush cut.

**902.0m to 950.0m**  
LIMESTONE W/ mnr Siltstone

**SILTSTONE:**grysh blk-brn blk,  
dsky brn,hd-mod hd,blkky-sbfiss,  
var calc,tr micmic,calc micro-  
frac fill.

**LIMESTONE:**v lt gry,yelsh  
gry,pl brn,CLCSLT-CLCAR,  
mod hd-fri,micr txt-suc,sl dol,  
ool i/p,tr blk min spks,occ fluor  
cryst vug fill,nil-occ pr vis  
por,tr vggy por,tr min fluor.

**SILTSTONE:**brn blk,olv  
blk,hd-v hd,brit i/p,blkky-ang,  
gen non-calc,diss & occ hd nod  
pyr,tr micmic,bitum odour @  
shakers,blk bitum smearing  
when handling.

**LIMESTONE:**wh-v pl gry,  
yel brn,CLCLT-CLCAR,fri-  
v hd,ang,suc i/p,rel grnstn,  
dissem & euhedral pyr,arg i/p,  
tr brit bitum lyrs,nil-occ pr  
vis por.

**SILTSTONE:**brn blk,dsky  
yel brn,frm-hd,blkky-ang,  
var calc,grd to LST,tr org  
mat,tr micmic.

**LIMESTONE:**yel gry,med gry,  
med dk gry,wh i/p, xln,  
clclt-clcar,v hd-fri i/p,  
occ dol,dissem & nod pyr,  
mnr styol,tr rel ools,nil-  
occ pr vis por.

**BALDWIN-2 REACHED TD**  
OF 950.0mMDRT at 14:30 hrs  
on 22-08-2011.

**WIRELINE LOGGING RUNS:**  
1: PEX-SONIC-GR  
2: FMI-SONIC SCANNER-SP  
3: FMI-SONIC SCANNER  
4: SONIC SCANNER  
5: MDT w/ MINI DSTS

**DIRECTIONAL DATA**  
FROM G.P.I.T:

Depth:	Deg:	Azi:
450m	0.4	001
500m	0.6	028
550m	0.7	028
600m	1.0	033
650m	0.9	025
700m	1.0	022
750m	1.0	027
800m	0.9	021
850m	0.9	012
900m	0.9	235
950m	1.7	195



[illegible]