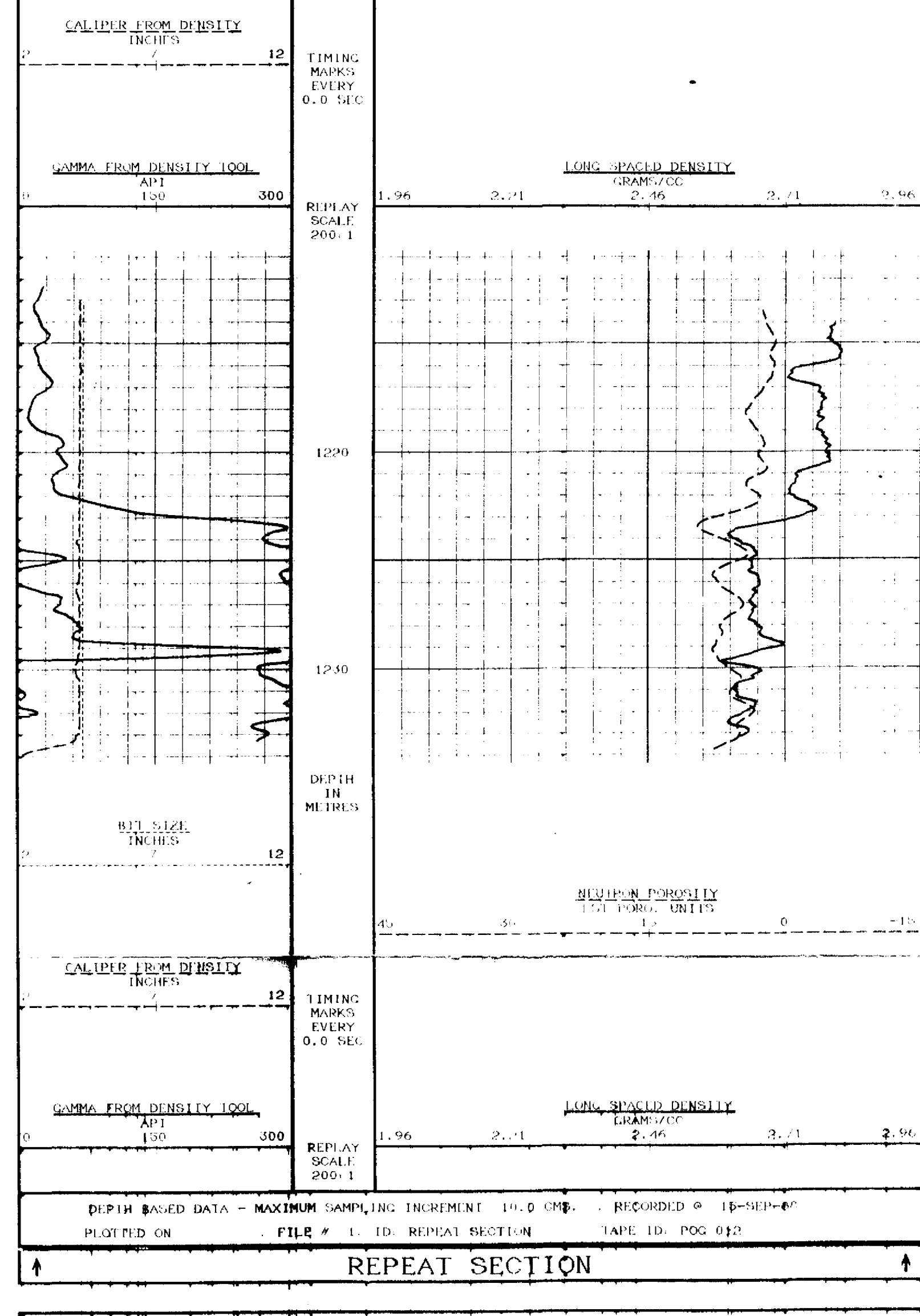


DEPTH BASED DATA - MAXIMUM SAMPLING INCREMENT 10.0 CM. - RECORDED @ 10-SEP-80
 PLOTTED ON FILE # 1 ID REPEAT SECTION TAP ID: POG 012



DEPTH BASED DATA - MAXIMUM SAMPLING INCREMENT 10.0 CM. - RECORDED @ 10-SEP-80
 PLOTTED ON FILE # 1 ID REPEAT SECTION TAP ID: POG 012

COMPANY: PACIFIC OIL & GAS
 WELL: HACKING #1
 FIELD: WILD CAT
 PROVINCE/COUNTY: NORTHERN TERRITORY
 COUNTRY/STATE: AUSTRALIA



3 ARM DIPMETER ANALYSIS

PR 88/079 B

CLIENT _____
 BOREHOLE _____
 AREA _____
 COUNTRY _____

PACIFIC OIL & GAS
 HACKING #1
 GEORGINA BASIN
 AUSTRALIA

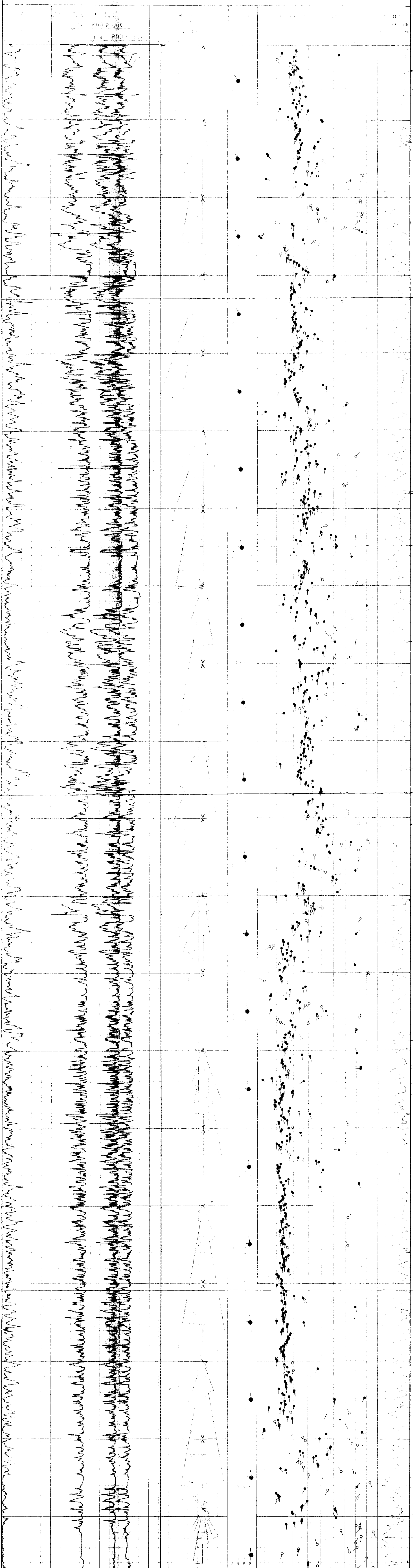
DATE LOGGED: 11 SEP 88
 DATE PROCESSED: 11 OCT 88



COMMENTS.....

INTERPRETATION PARAMETERS

STEP: 0.5 MM
 INTERVAL: 1 MIN
 CORRECTION: 0.0
 FILTER: 5.00 HZ
 DEPTH: 240.00 FT
 SCALE: 100.00
 SENSITIVITY: 100.00
 GROUND: 0.00
 TILT: 0.00



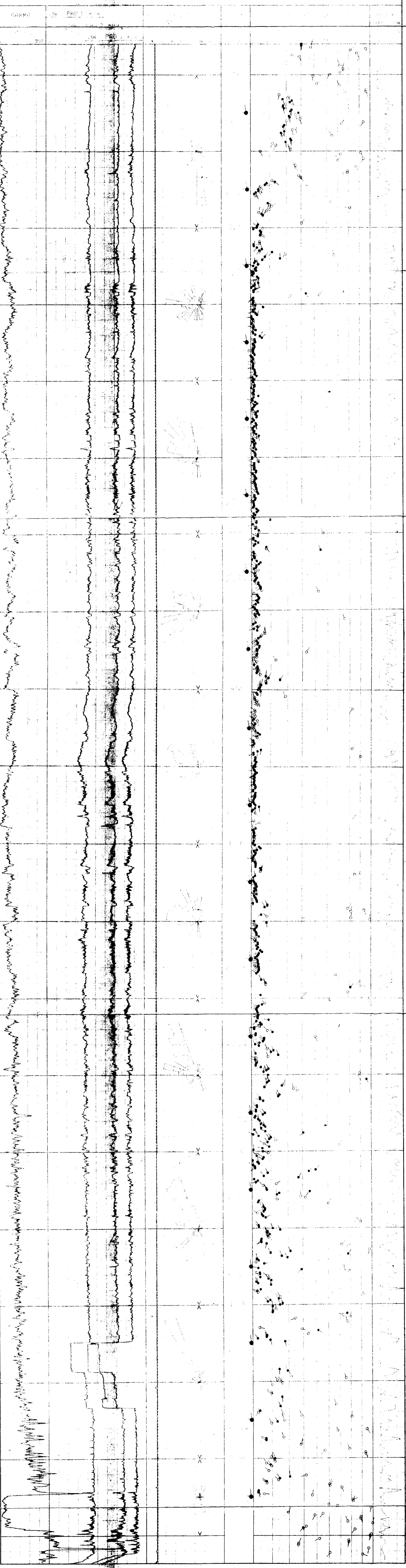


COMMENTS.....

INTERPRETATION PARAMETERS

STEP 0.50M. DECLINATION 5.00 EAST
INTERVAL 1.00M. DEPTH RANGE 740.00 - 1234.00M.
SEARCH ANGLE 810 DATE PROCESSED 20-OCT-88
AVERAGE BOREHOLE DEVIATION AND DIRECTION ANNOTATED EVERY 25.0M.
ROSE DIRECTION SEGMENTED EVERY TEN DEGREES, 1" RADIUS PER DIP MARKER DISPLAYED

LEGEND: ● GOOD (INCL) ○ FAIR (INCL)



COMMENTS.....

INTERPRETATION PARAMETERS

STEP 0.50M. DECLINATION 5.00 EAST
INTERVAL 1.00M. DEPTH RANGE 1201.86 - 1234.00M.
SEARCH ANGLE 810 DATE PROCESSED 20-OCT-88
AVERAGE BOREHOLE DEVIATION AND DIRECTION ANNOTATED EVERY 25.0M.
ROSE DIRECTION SEGMENTED EVERY TEN DEGREES, 1" RADIUS PER DIP MARKER DISPLAYED

LEGEND: ● GOOD (INCL) ○ FAIR (INCL)

