

# CROCKER

## DATA PROCESSING

# HACKING #1

## Composite Logs

Company	PACIFIC OIL & GAS
Well Name	HACKING #1
Field	WILDCAT
Country	AUSTRALIA
County or Rig name	NORTHERN TERRITORY
Perm. Datum	MSL
Elev. Log Zero (wrt EPD)	0.00 M
Date Plotted	Wednesday, 28 May 2008
Time Plotted	10:24:20 AM



PETROLOG SOFTWARE Version 10.5 (Beta)



### Run Information

Run number	1	2			
Log date	SEPT 1988	15-SEPT 1988			
Depth-Driller	251.00 M	1234.30 M			
Depth-Logger	250.93 M	1233.90 M			
Bottom log interval		1233.90 M			
Top log interval	85.90 M	85.30 M			
Casing-Driller	85.90 M	85.90 M			
Casing-Logger	85.90 M	85.90 M			
Bit Size	6.000 INCH	4.350 INCH			
Hole Fluid type	GEL/CMC	NEWDRILL			
Fluid Density	1.120 G/CC	1.030 G/CC			
Fluid Viscosity	34.00 S	43.00 S			
Fluid PH	9	8			
Mud Sample Source	PIT	PIT			
RM @ Surface	5.000 OHMM	2.600 OHMM			
Mud temp @ Surface	26.00 DEGC	23.00 DEGC			
RMF @ Surface		2.900 OHMM			
MF temp @ Surface		23.00 DEGC			
Mud Filtrate Sample Source	PRESS	PRESS			
Bottom hole temp	33.00 DEGC	63.00 DEGC			
Logging unit No	V331	V331			
Logging unit Loc	BNE	BNE			
Drill Unit	D-LOGIC	D-LOGIC			

Recorded by	D. LONG	D. LONG			
Witness	G.W. KING	G.W. KING			
Range	EP13NT	EP13NT			

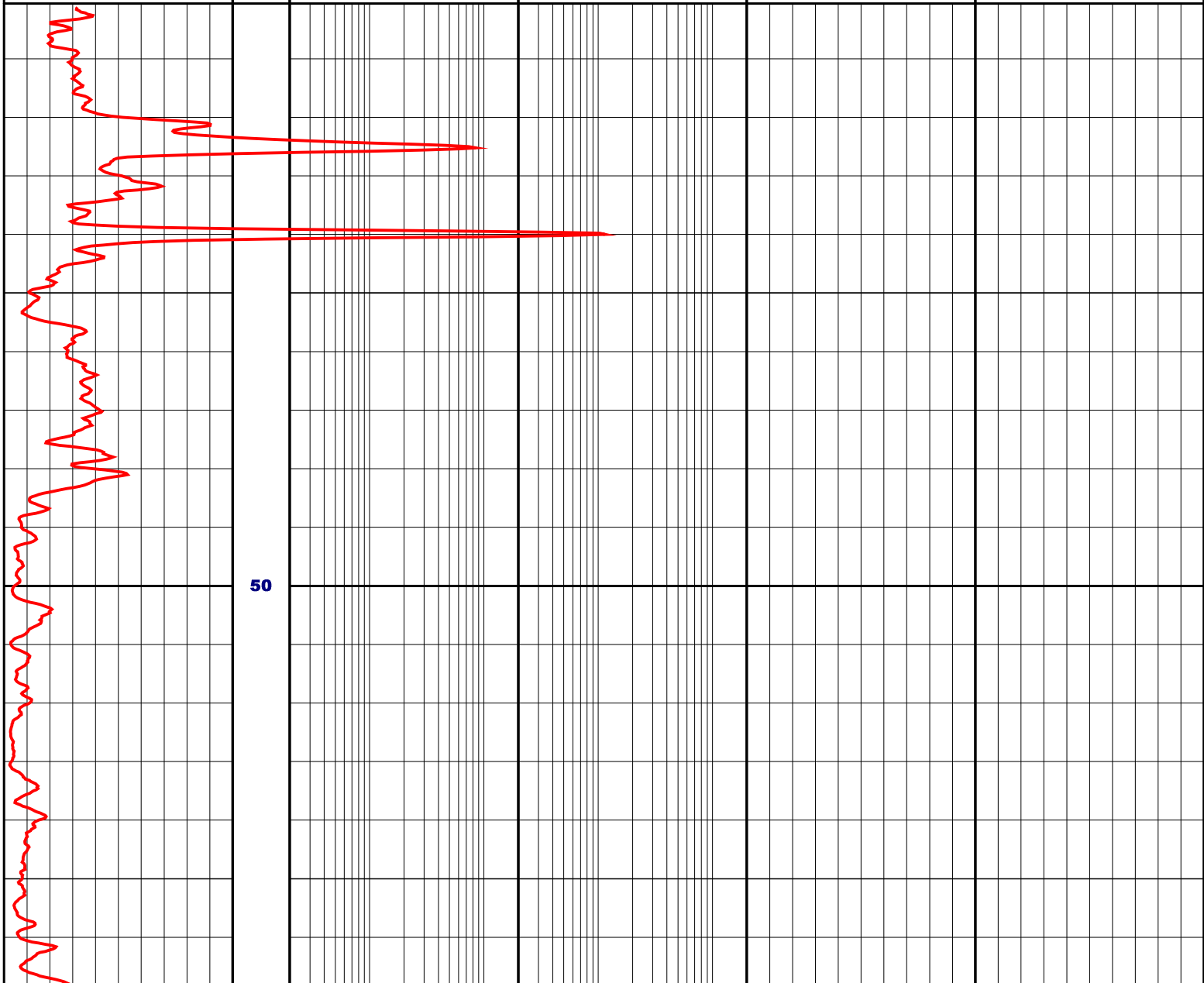
Logs loaded, edited and merged from dumped LIS format files by CDP in May 2008  
 Log header filled from scanned completion report. (Information incomplete)

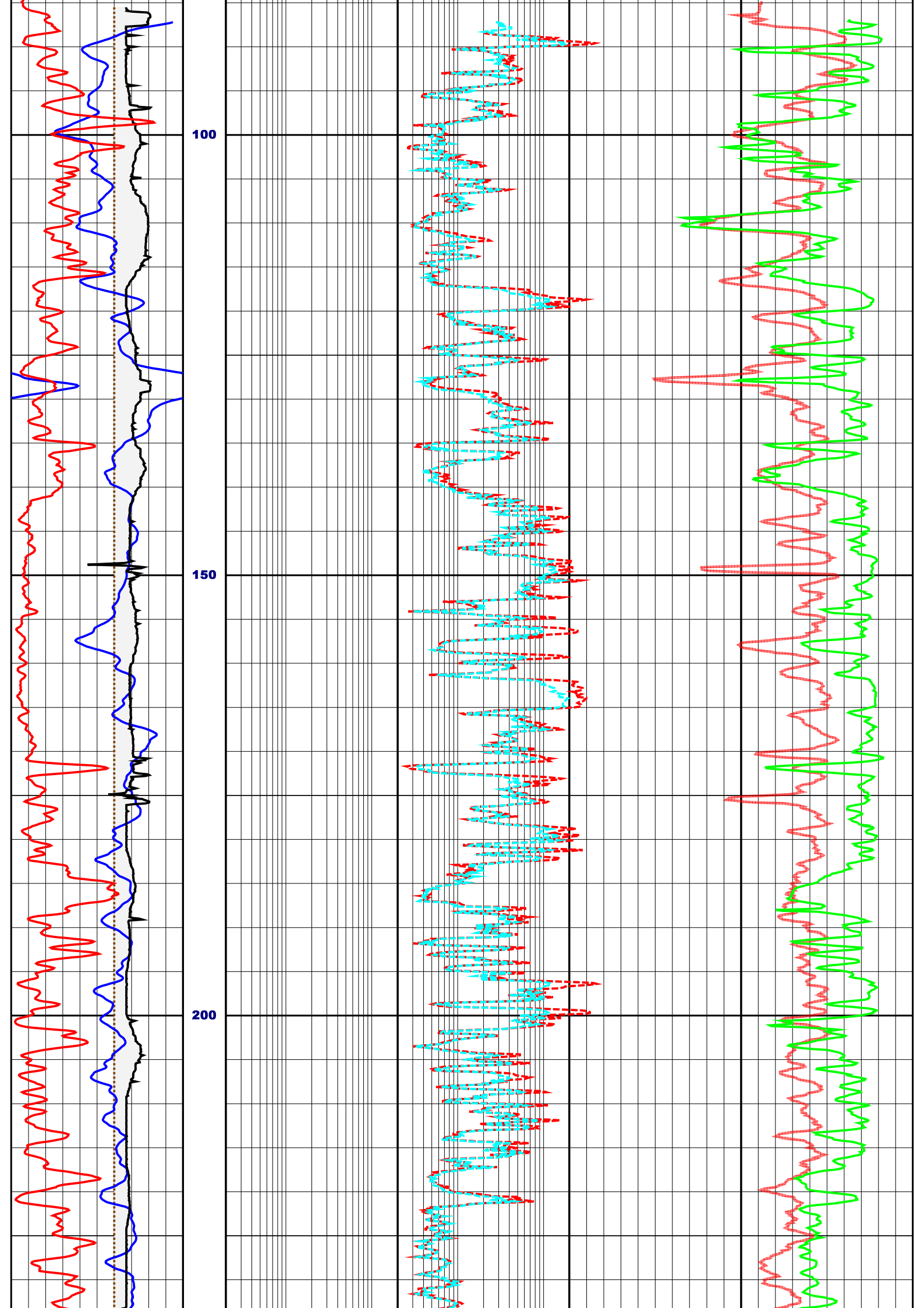
Since well log interpretations are opinions based upon inferences from well logs, we cannot and do not guarantee the correctness or accuracy of any interpretation. Therefore we shall not be liable or responsible for any loss, damage, cost or expense incurred or sustained by anyone resulting from any interpretation.

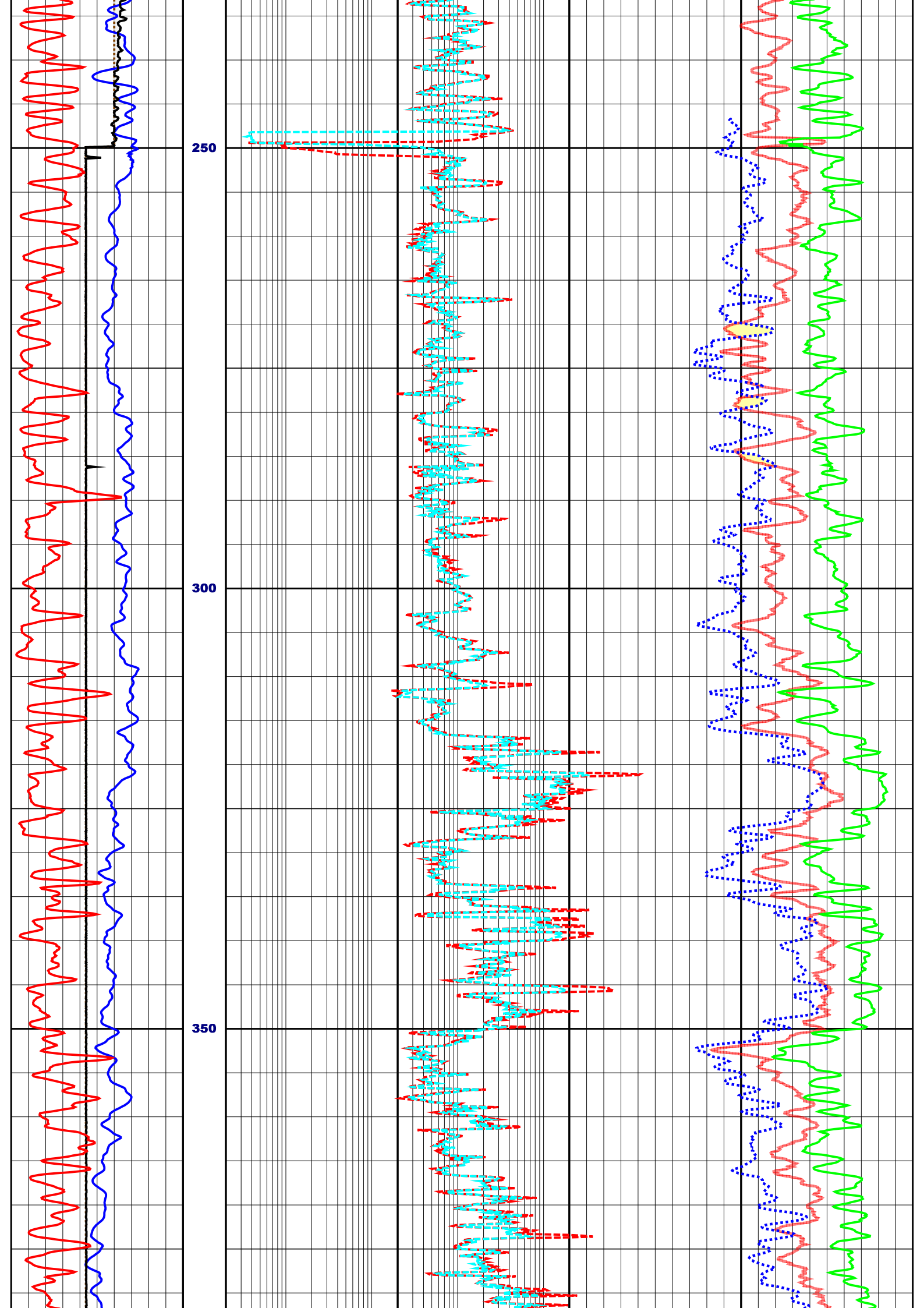
## Log Description

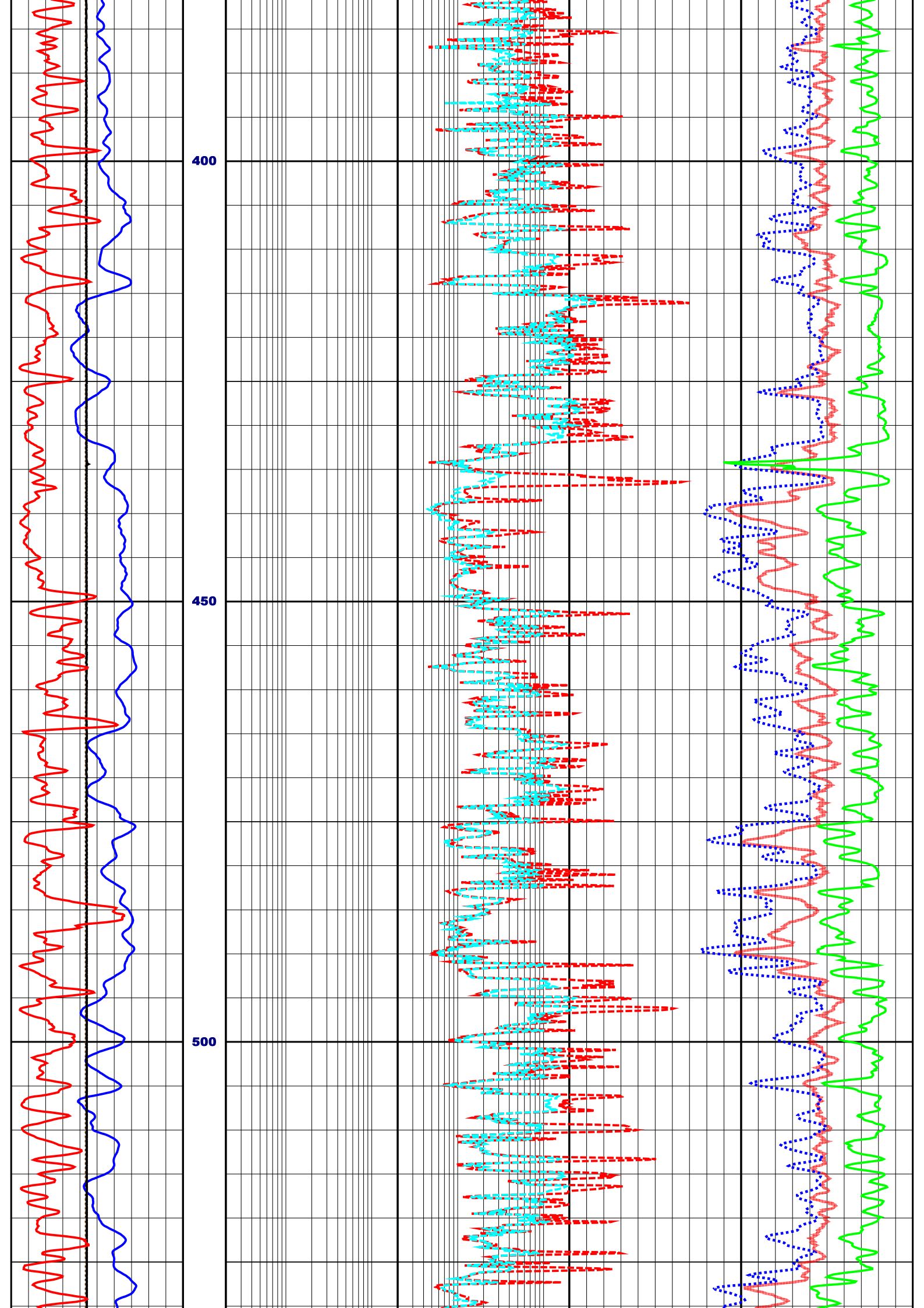
- BS            Bit Size
- SP            Spontaneous Potential Log
- FEDP        Deep Resistivity
- FESH        Shallow resistivity
- RHOB        Compensated Formation Density
- NPRS        Neutron Sandstone Porosity
- DTCM        Delta T Compensated
- CADE        Density Caliper
- GRDE        Gamma-Ray

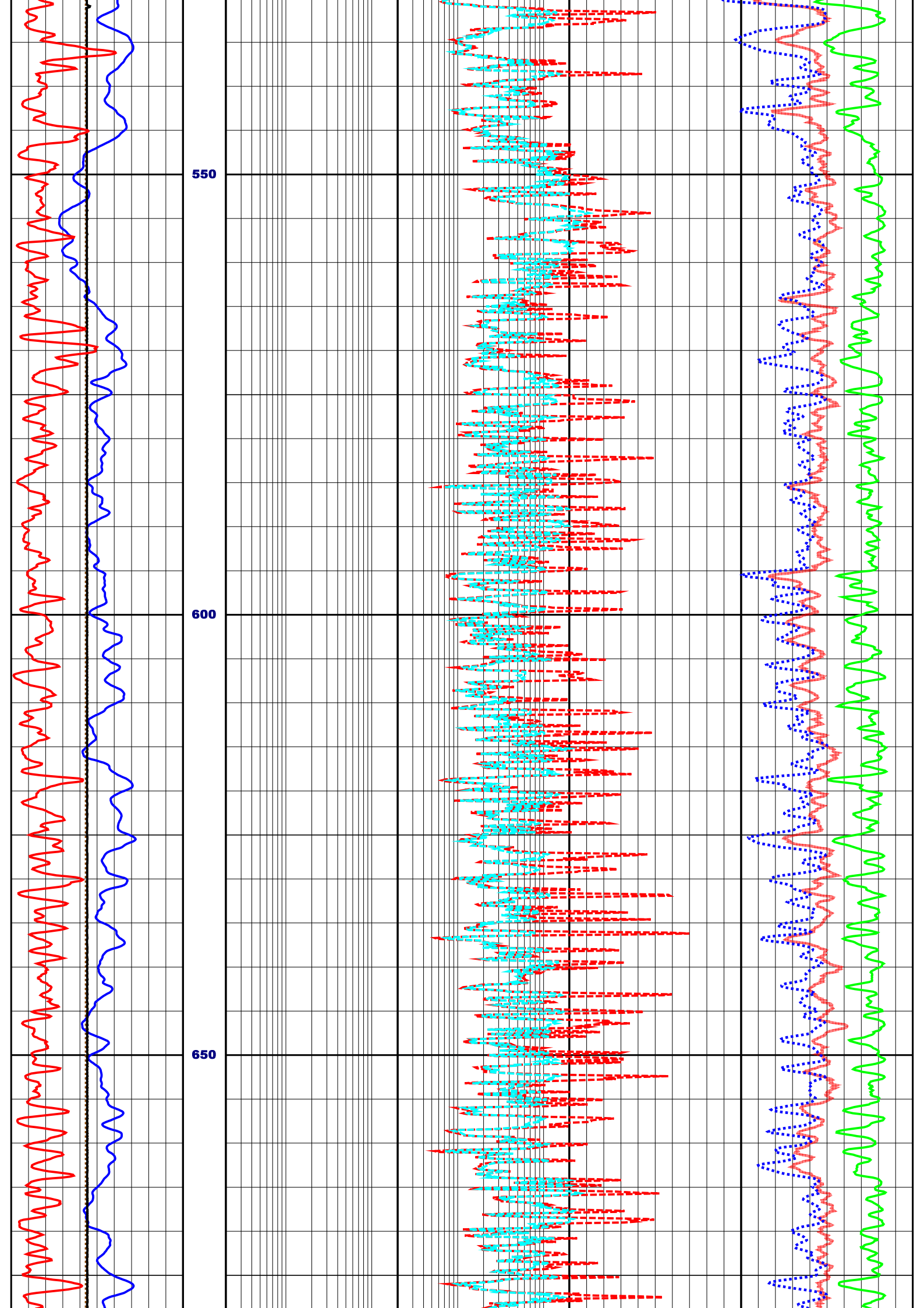
0.0	BS (INCH)	10.0	DEPTH	0.2	FEDP (OHMM)	2000.0	1.95	RHOB (G/C3)	2.95
-70.0	SP (MV)	30.0	M	0.2	FESH (OHMM)	2000.0	0.45	NPRS (W/V)	-0.15
0.0	CADE (INCH)	10.0	1:500					DTCM (US/F)	40.0
0.0	GRDE (API)	250.0					140.0		

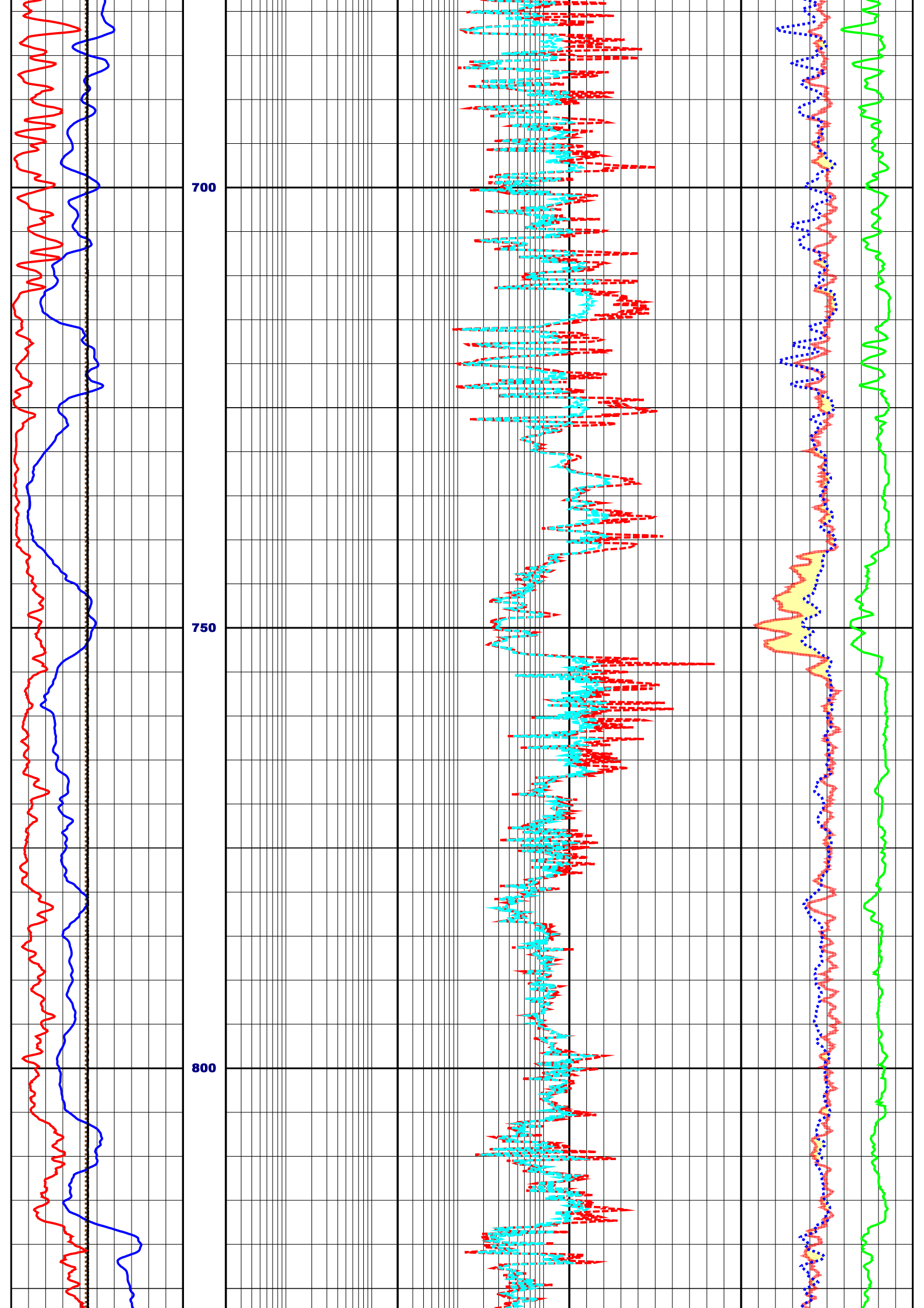


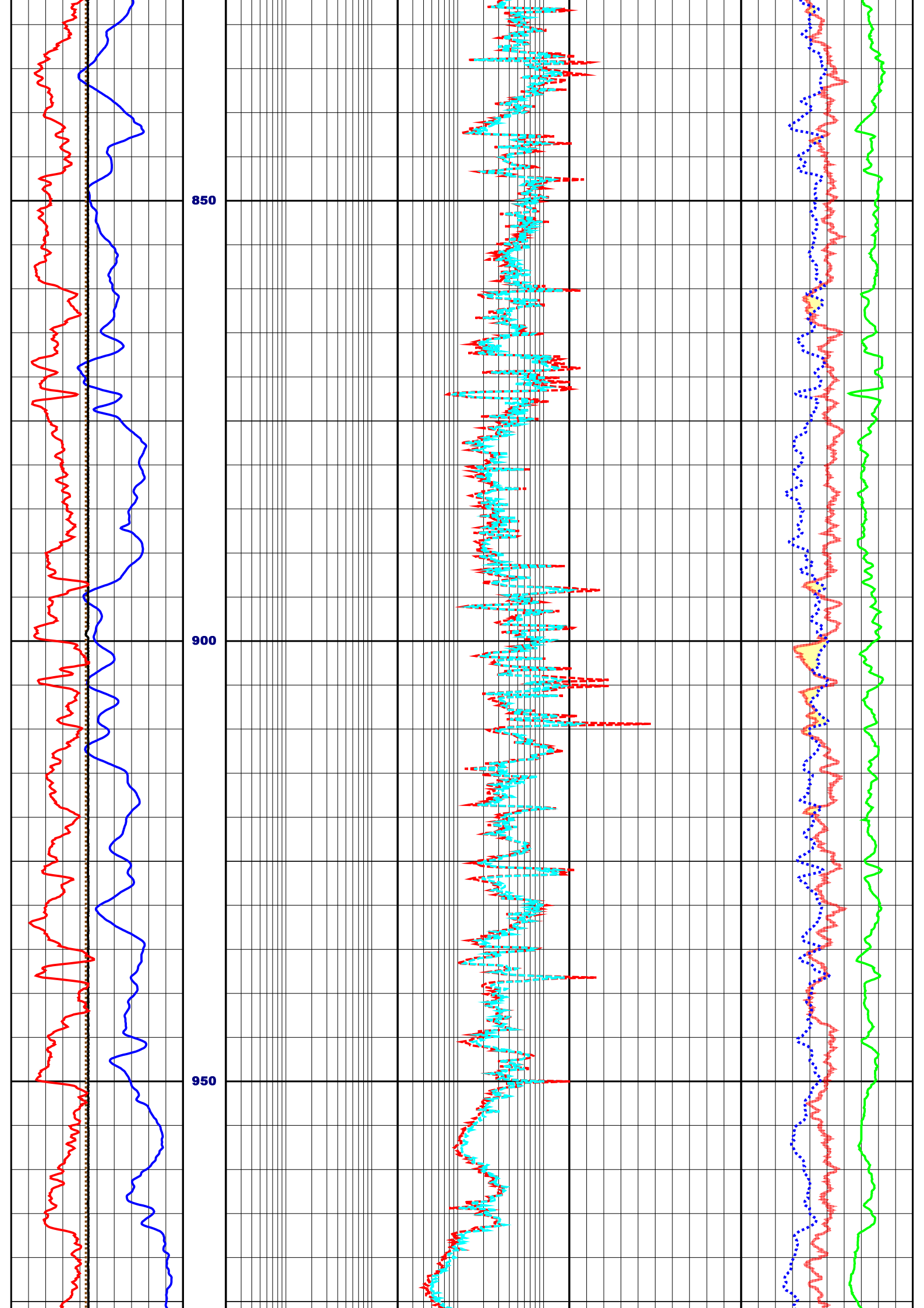




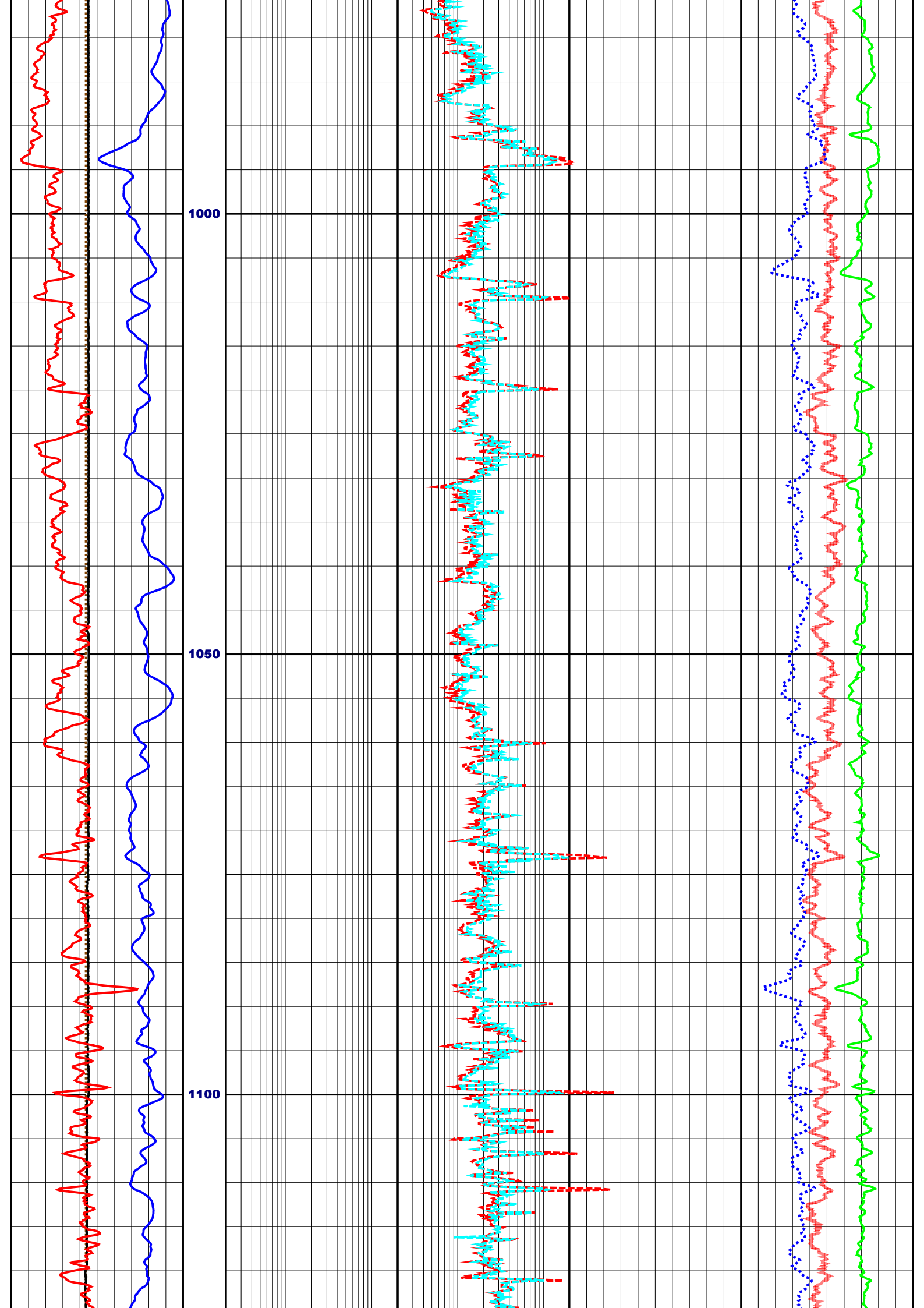


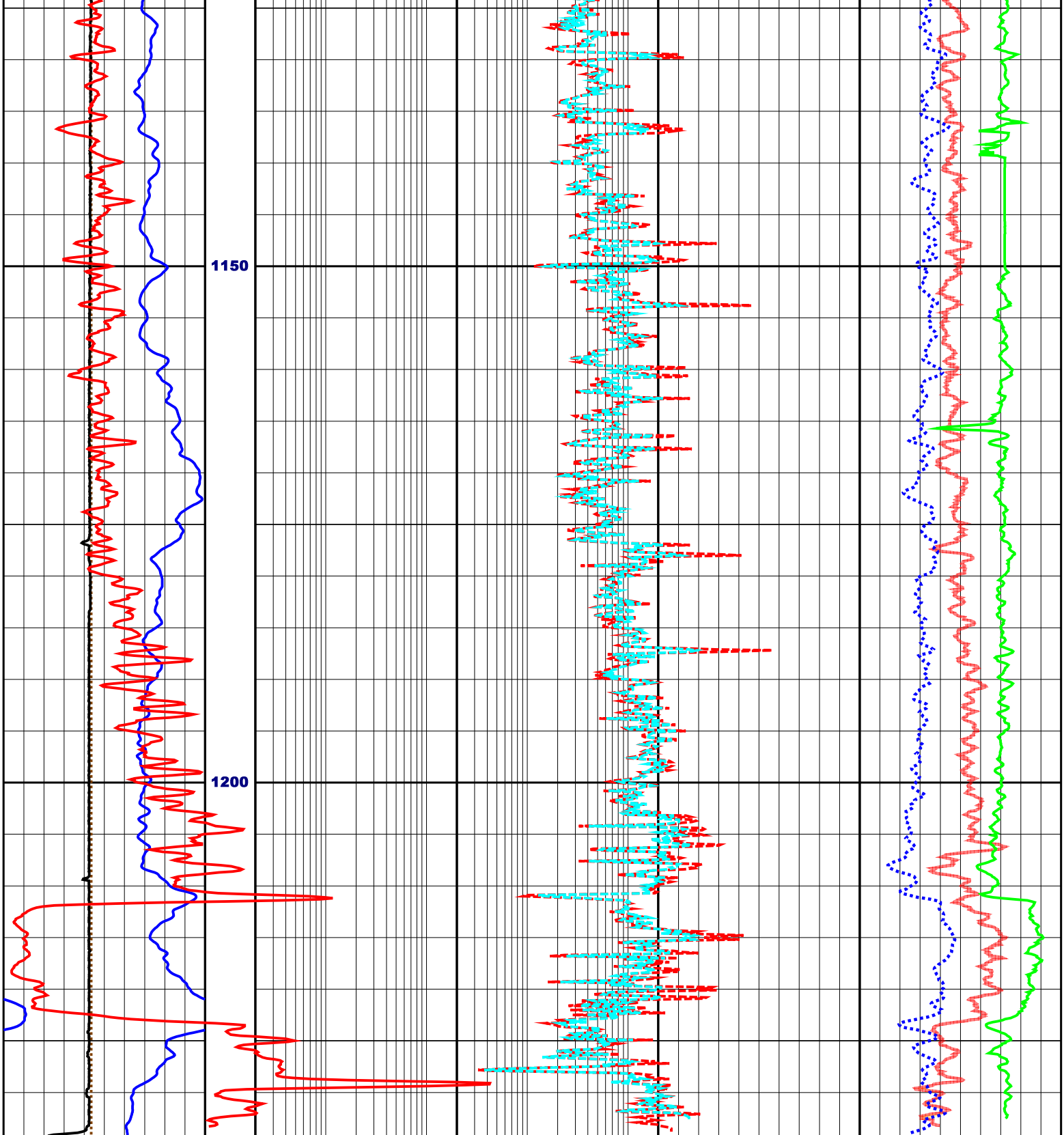












0.0	BS (INCH)	10.0	DEPTH	0.2	FEDP (OHMM)	2000.0	1.95	RHOB (G/C3)	2.95
70.0	SP (MV)	30.0	M	0.2	FESH (OHMM)	2000.0	0.45	NPRS (V/V)	-0.15
0.0	CADE (INCH)	10.0	1:500					DTCM (US/F)	40.0
0.0	GRDE (API)	250.0							