

COMPOSITE WELL LOG

EXOIL OIL COMPANY LIMITED

LUCY CREEK No. 1

PETROLEUM TENEMENT: O.P. 136 STATE: NORTHERN TERRITORY 4-MILE SHEET: F-53-12 TOBERMORAY BASIN: GEORGINA

WELL STATUS: DRY & ABANDONED

LOCATION
 Lat. 22° 23' 50" S
 Long. 136° 38' 40" E

ELEVATION
 Ground 980' a.s.l.
 K.B. 992' a.s.l.

Date Spudded: 6th November, 1966.
Date Drilling Stopped: 27th November, 1966.
Date Rig off: 29th November, 1966.

Total Depth: 3627'
 Driller: E. Log
 E. Log: 3627'

Notes Size	Inches	From	To
	17 1/2	Surface	44'
	13 3/4	310'	1860'
	9 7/8	310'	1860'
	7 7/8	1860'	3624'
	7 1/8	1860'	3627'

Casing Size	Inches	Wt.	Gr.	Depth	Cmf.	Cmf's to
	15	Conductor	—	44'	50 sacks	surface
	10 3/4	40.5	H-40	303'	120 sacks	surface
	8 5/8	32	H-40	1860'	110 sacks	—

Cement Plugs	From	To	Sacks	Top Feet
1	3450'	3627'	45	—
2	2850'	3000'	40	—
3	2400'	2550'	40	2437'
4	1800'	1950'	40	1785'
5	surface	140'	10	—

INDUCTION - ELECTRICAL LOG DATA

Run No.	1	2
Date	14. 11. 66	28. 11. 66
First Reading	370'	1860'
Last Reading	1840'	3627'
Interval Measured	1440'	1762'
Casing Strainberg	303'	1859'
Casing Driller	303'	1860'
Depth Reached	1865'	3627'
Bottom Driller	1868'	3627'
Well Name	NATURAL FORMATION WATER	
Density / Viscosity	—	
W.C. Resistivity	3.12 @ 68°F	2.10 @ 68°F
W.C. Resistivity R.M.T.	112.7'	1.35 @ 142°F
µm/Fluid Loss @ 30min.	—	
Origin of Sample	BLOODY LINE	BLOODY LINE
Run	—	
Revised by	BILIDA	BILIDA
Witness	HODGKINSON	HODGKINSON

RADIOMETRIC LOG DATA

Type of Log	Gamma-Ray
Run No.	1
Date	28. 11. 66
Total Depth Drilled	3627'
Top Logged Interval	20'
Bottom of Logged Interval	3620'
Type of Fluid in Well	NATURAL WATER
Fluid Level	400'
Maximum Recorded Temperature	142°F
Natural Source, Strength and Type	—
Source Spacing	—
Length of Measuring Device	24"
O.D. of Instrument	3 3/4"
Time Constant	5 sec.
Logging Speed	100 ft./hr.
Statistical Variation	± 20 UNITS
Specialty Reference	180 UNITS/IN.
Recorded by	BILIDA

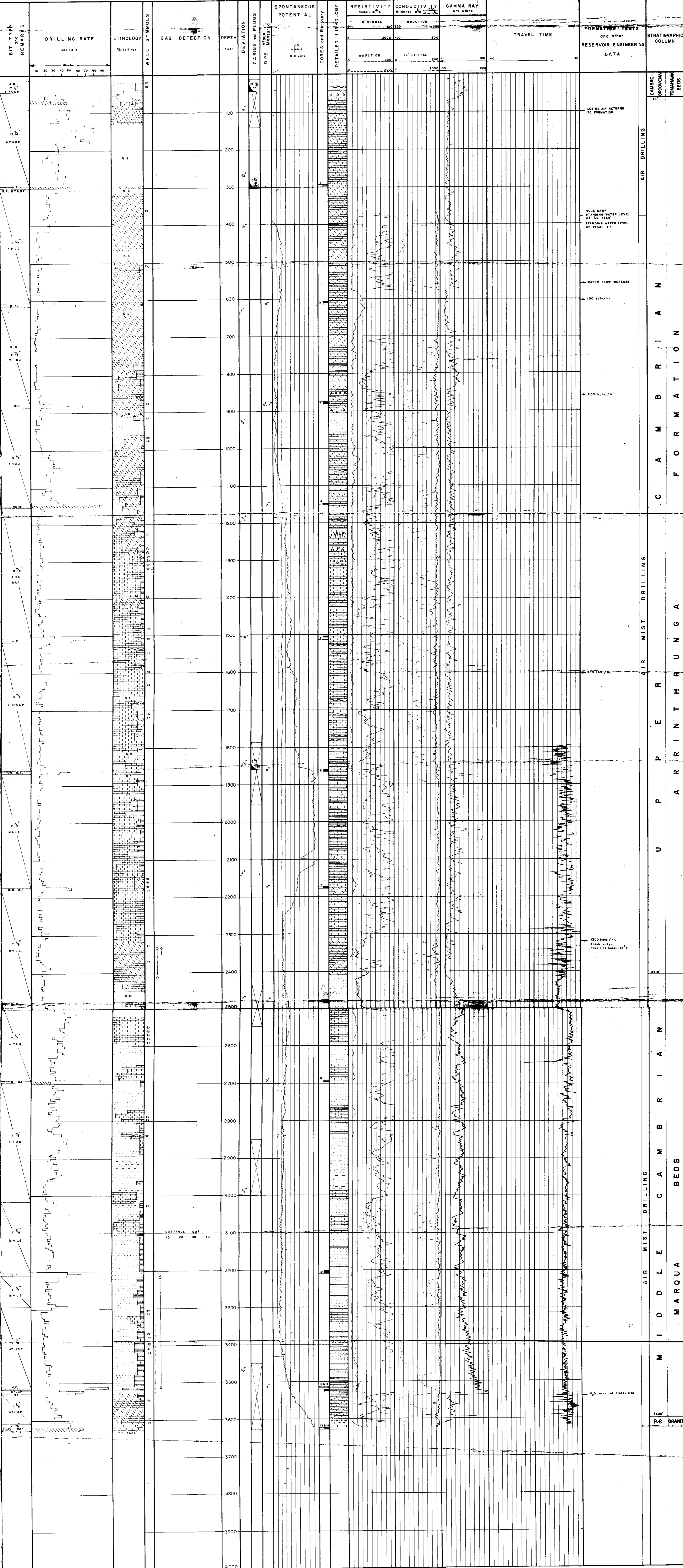
OTHER LOGS

Acoustic Velocity: 1860' - 3620'

Well Head Fitting: Welded Steel Plate
 Drilled by: Oil Drilling & Exploration Ltd.
 Logged by: Halliburton
 Drilling Method: Rotary - Air & Mist
 Cemented by: Halliburton
 Gas Logging by: Exoil
 Lithology by: R.L. Pemberton

LITHOLOGIC REFERENCE

- Sandstone
- Limestone
- Siltstone
- Dolomite
- Shale
- Granite
- Chert
- Gallies pellets
- Gypsum
- Chert
- Pyrite



STRATIGRAPHIC COLUMN
 CAMBRO-PROTEROZOIC
 TORIAN
 TORIAN BEGS
 AIR DRILLING
 C A M B R I A N
 F O R M A T I O N
 AIR MIST DRILLING
 U P P E R
 M A R Q U A
 B E D S
 C A M B R I A N
 B E D S
 GRANITE