

**INDUCTION-  
ELECTRIC LOG**

COMPANY Alliance Petroleum of Australia

WELL Mulga #1

FIELD Wildcat

County \_\_\_\_\_ State N.T.

Location  
 Lat. 21° 41' 55" South  
 Long. 137° 38' 30" East  
 Sec. \_\_\_\_\_ Twp. \_\_\_\_\_ Rge. \_\_\_\_\_

Permanent Datum Ground level Elev. 898'  
 Log Measured From Kelly Bunking Fl. Above Perm. Datum  
 Drilling Measured From Kelly Bunking

Date 31-8-65  
 Run No. 020  
 Depth: Driller 2610'  
 Depth: Wellex 2605'  
 Born Log Interval \_\_\_\_\_

Top Log Interval 823'  
 Current Driller 1034' 825'  
 Closing Well 823'

Temperature of Hole \_\_\_\_\_  
 Temperature \_\_\_\_\_

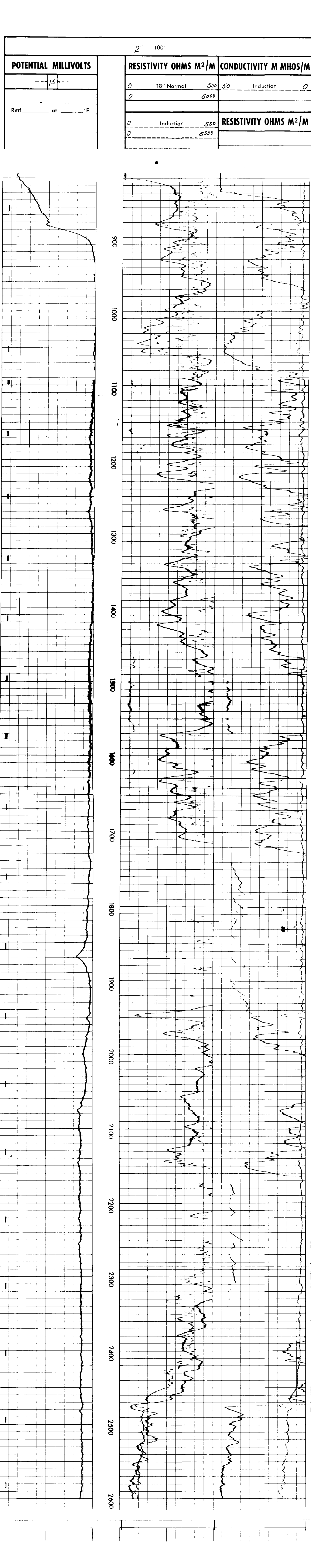
Log Interval \_\_\_\_\_  
 Log Interval \_\_\_\_\_  
 Log Interval \_\_\_\_\_

Log Interval \_\_\_\_\_  
 Log Interval \_\_\_\_\_  
 Log Interval \_\_\_\_\_

Log Interval \_\_\_\_\_  
 Log Interval \_\_\_\_\_  
 Log Interval \_\_\_\_\_

| REMARKS                                  |             |          |         | SCALE CHANGES     |                 |               |               |
|--|-------------|----------|---------|-------------------|-----------------|---------------|---------------|
| Date                                     | Sampler No. | Type Log | Depth   | Scale Up Hole     | Scale Down Hole |               |               |
|  |             |          |         |                   |                 |               |               |
| Change in Mud Type or Additional Samples |             |          |         |                   |                 |               |               |
| Type Fluid in Hole                       |             |          |         |                   |                 |               |               |
| Dens.                                    | Visc.       |          |         |                   |                 |               |               |
| ph                                       | Fluid loss  |          |         |                   |                 |               |               |
| Source of Sample                         |             |          |         | EQUIPMENT DATA    |                 |               |               |
| R  | Meas. Temp. | F        | Run No. | Tool Type and No. | Pad Type        | Tool Position | Other         |
| R  | Meas. Temp. | F        | 020     | 5620" Inductor    |                 |               | 1.5" S. - off |
| R  | Meas. Temp. | F        |         |                   |                 |               |               |
| Source R                                 |             |          |         |                   |                 |               |               |
| R  | BHT         | F        |         |                   |                 |               |               |
| R  | BHT         | F        |         |                   |                 |               |               |
| R  | BHT         | F        |         |                   |                 |               |               |

*Hole drilled with air. Water in hole is ...*



|                       |                  |        |                                    |                       |
|-----------------------|------------------|--------|------------------------------------|-----------------------|
| Rmf _____ at _____ F. | 0 Induction 500  | 0 5000 | RESISTIVITY OHMS M <sup>2</sup> /M | 50 Induction 0        |
| → S ←+                | 0 18" Normal 500 | 0 5000 | RESISTIVITY OHMS M <sup>2</sup> /M | CONDUCTIVITY M MHOS/M |

ALLIANCE PETROLEUM OF AUSTRALIA N.L.  
 MULGA #1  
 WILDCAT  
 NORTHERN TERRITORY  
 T.D. LOGGED 2600  
 T.D. DRILLER 2610  
 T.D. WELLEX 2605