



# RADIOACTIVITY LOG

COMPANY Alliance Petroleum of Australia

COMPANY *Alliance Petroleum of Australia*

WELL *Mulga #1*

FIELD *Wildcat*

COUNTY *Wilkes* STATE *N.T.*

Location: *Lat: 21° 41' 55" South Long: 137° 38' 30" East*

Other Services: *Acoustic Velocity Induction E.T.*

Permanent Datum: *Island Aerial* Elev: *835'*

Log Measured from: *Kelly Boring* Ft. Above Perm. Datum

Drilling Measured from: *Kelly Boring*

Date: *31-8-65*

Run No. *One*

Type Log: *Gamma-Neutron*

Depth - Driller: *2570'*

Depth - Wellex: *2570'*

Bottom Logged Interval: *4'0"*

Top Logged Interval: *2570'*

Type Fluid in Hole: *Water*

Solubility: *From Cl*

Density: *1.05*

Levee: *330'*

Max. rec. temp. deg. F: *105*

Operating Rig Time: *7.1.11.11*

Recorded by: *G. Lange*

Witnessed by: *G. Lange*

BORE-HOLE RECORD

Run No.	Bit	From	To	Size	W.L.	From	To
1	1 3/4	5467	825	10 3/8	5467	825	
2	1 3/4	825	2610	5 1/2	825	2610	

CASING RECORD

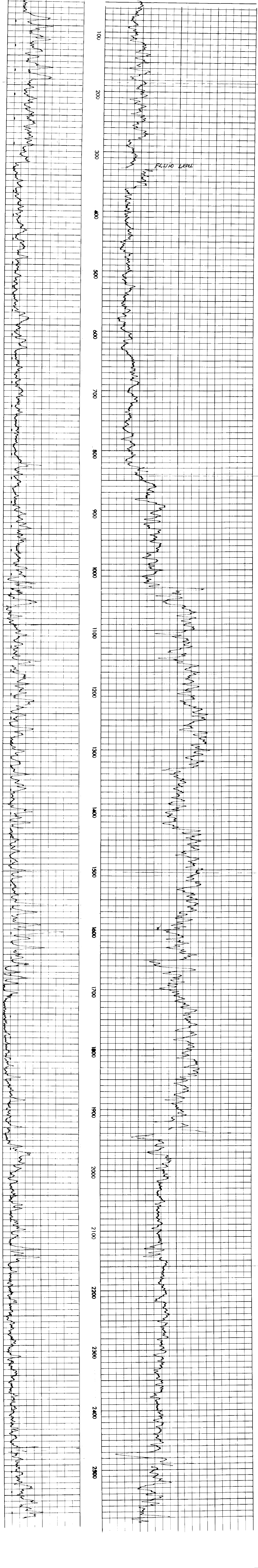
Run No. *1* Bit *1 3/4* From *5467* To *825* Size *10 3/8* W.L. *5467* From *825* To *825*

EQUIPMENT DATA			
GAMMA RAY		NEUTRON	
Run No.	<i>2112</i>	Run No.	<i>One</i>
Tool Model No.	<i>2200</i>	Log Type	<i>Neutron-Gamma</i>
Diameter	<i>3 3/8"</i>	Tool Model No.	<i>2200</i>
Detector Model No.	<i>1-E-11</i>	Diameter	<i>3 3/8"</i>
Type	<i>G.M.</i>	Detector Model No.	<i>1-E-8</i>
Length	<i>28"</i>	Type	<i>G.M.</i>
Distance to N. Source	<i>1.07"</i>	Length	<i>14"</i>
GENERAL		Source Model No.	<i>554</i>
Hoist Truck No.	<i>3222</i>	Serial No.	
Instrument Truck No.	<i>3222</i>	Spacing	<i>13.2"</i>
Tool Serial No.	<i>2468</i>	Type	<i>PdBe</i>
		Strength	<i>8.5 x 10<sup>6</sup> N/sec</i>

LOGGING DATA											
GENERAL		GAMMA RAY				NEUTRON				API N. Units per Log Div.	
Run No.	Depths	T.C. Sec.	Sens. Settings	Zero Div. L or R	API G.R. Units per Log Div.	T.C. Sec.	Sens. Settings	Zero Div. L or R			
<i>40</i>	<i>2590</i>	<i>*</i>	<i>200</i>	<i>0</i>	<i>20</i>	<i>2</i>	<i>1500</i>	<i>4.60%</i>	<i>75</i>		

Reference Literature: *Wellex Radioactivity Logging Bulletin A-124*

Remarks: *Hole drilled with six water in hole is natural pump at sea level. Fluid level 513*



0	200	300	400	1800	4300
200		4200			

T.D. LOGGED *2570'*

T.D. DRILLER *2610'*

T.D. WELLEX *2570'*