

WELEX

Acoustic Velocity Log
Caliper Log

COMPANY *Alliance Petroleum of Australia*

COMPANY *Alliance Pet. of Aust.*
 WELL *Mulga #1*
 FIELD *Wildcat* STATE *Western Territory*
 COUNTY _____ State *N.T.*

Location:
 Lat. *21° 41' 53" South*
 Long. *137° 39' 50" East*
 Sec. *89a*

Other Services:
 Induction - *EX*
 Gamma-Ray/Neutron

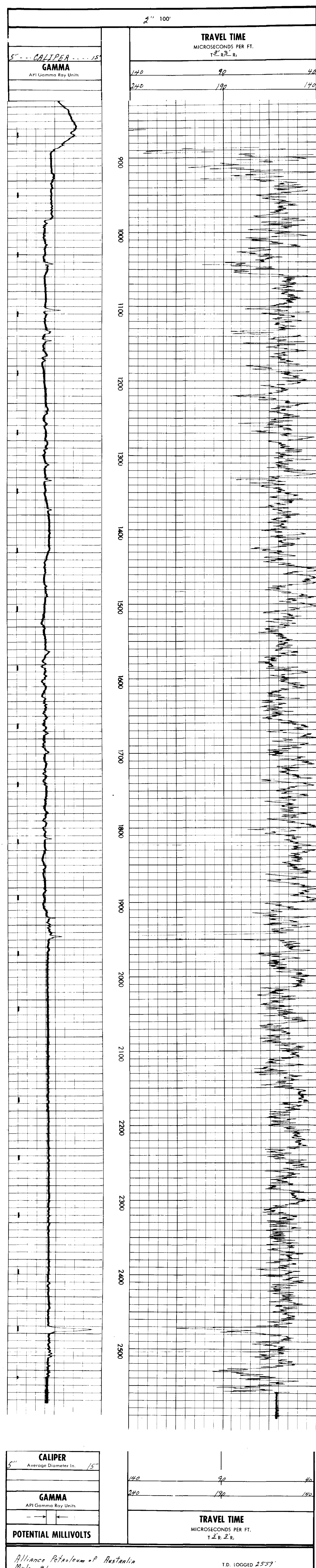
Permanent Datum *Ground Level* Elev. *895'*
 Log Measured From *Kelly Building* Ft. Above Perm. Datum
 Drilling Measured From *Kelly Building* Elev. *K.S. 806'*
 D.F. *895'*

Date	<i>31-8-65</i>
Run No.	<i>022</i>
Depth-Driller	<i>2640'</i>
Depth-Welex	<i>2559'</i>
Btm. Log Inter.	<i>2559'</i>
Top Log Inter.	<i>2559'</i>
Casing-Driller	<i>1032' @ 21.5"</i>
Casing-Welex	<i>833"</i>
Bit Size	<i>8 3/4"</i>
Type Fluid in Hole	<i>Water</i>
Dens. Visc.	
PH Fluid Loss	ml
Source of Sample	
R ₁₀ @ Meas. Temp.	@ °F
R ₁₀₀ @ Meas. Temp.	@ °F
R ₁₀₀₀ @ Meas. Temp.	@ °F
Source: R ₁₀ R ₁₀₀ R ₁₀₀₀	
R ₁₀ @ BHT	@ °F
R ₁₀₀ @ BHT	@ °F
R ₁₀₀₀ @ BHT	@ °F
Max. Rec. Temp.	<i>103°F @ 8 1/4"</i>
Equip. Location	<i>2522' 1000'</i>
Recorded by	<i>D.F. 8/1/1</i>
Witnessed by	<i>G. Camp</i>

REMARKS

Change in Mud Type or Additional Samples	Type Log	Depth	Scale Up Hole	Scale Down Hole
Date Sample No.				
Depth-Driller				
Type Fluid in Hole				
Dens. Visc.				
PH Fluid Loss				
Source of Sample				
R ₁₀ @ Meas. Temp.	@ °F	@ °F		
R ₁₀₀ @ Meas. Temp.	@ °F	@ °F		
R ₁₀₀₀ @ Meas. Temp.	@ °F	@ °F		
Source: R ₁₀ R ₁₀₀ R ₁₀₀₀				
R ₁₀ @ BHT	@ °F	@ °F		
R ₁₀₀ @ BHT	@ °F	@ °F		
R ₁₀₀₀ @ BHT	@ °F	@ °F		

*Hole drilled with Air
Water in hole is natural fill up after drilling stopped*



Alliance Petroleum of Australia
Mulga #1
Wildcat
Western Territory

T.D. LOGGED 2559'
 T.D. DRILLER 2610'
 T.D. WELEX 2565'