

ENCLOSURE I

HALLIBURTON MUDLOG (1:500 SCALE)

COMPANY PACIFIC OIL & GAS  
 RIG ROCKDRIL RIG 22  
 WELL OWEN - 1  
 FIELD WILDCAT  
 COUNTRY NORTHERN TERRITORY  
 CO-ORDINATES 22°22'08.12"S, 137°56'23.11"E

DEPTH LOGGED FROM 7 m  
 TO 135.3 m  
 DATE LOGGED FROM 27 AUGUST 1990  
 TO 12 SEPT 1990

**GEARHART PTY. LTD.**  
**Geodata Services**  
 AUSTRALIA Telephone: (08) 46 9333  
 No. AH1500100 Telex: AA87137

LITHOLOGY

CONGLOMERATE	LIMESTONE	CALCLITIC	PYRITE
SANDSTONE	DOLOMITE	MICROMICACEOUS	GLAUCONITE
SILTSTONE	GRANITE	FOSSILIFEROUS	LITHIC
CLAYSTONE/SHALE	DOLOMITIC	CARBONACEOUS	SILICEOUS

ABBREVIATIONS

Z	NB	New bit	PP	Pump pressure	POH	Pull out of hole
X	NCB	New core bit	SPM	Strokes per minute	RIH	Run in hole
↓		Coring	CR	Circulated returns	WOW	Wait on weather
↓	CS	Casing shoe	PR	Poor returns	LAT	Logged after trip
↓	SWC	Sidewall cores	NR	No returns	LCM	Lost circulation material
↓	EL	Electric log	TG	Trip gas	DC	Depth connection
↓	RRB	Rerun bit	CG	Connection gas	DST	Drill stem test
↓	WOB	Weight on bit	DS	Directional survey		
↓	RPM	Revolutions per minute	WT	Wiper trip		

LOGGING ENGINEERS  
 1 SIMON DENT  
 2 WINARNO  
 3 \_\_\_\_\_  
 4 \_\_\_\_\_

CHROMATOGRAPH SHIMADZU  
 TOTAL GAS RECORDER SHIMADZU  
 H<sub>2</sub>S RECORDER \_\_\_\_\_

INSTRUMENTS CHECKED DAILY  
 24 HRS. LOGGING SERVICE

SCALE 1:500

MUD TYPE Variable details specified in drilling rate column

POROSITY (Visible or inferred from texture)

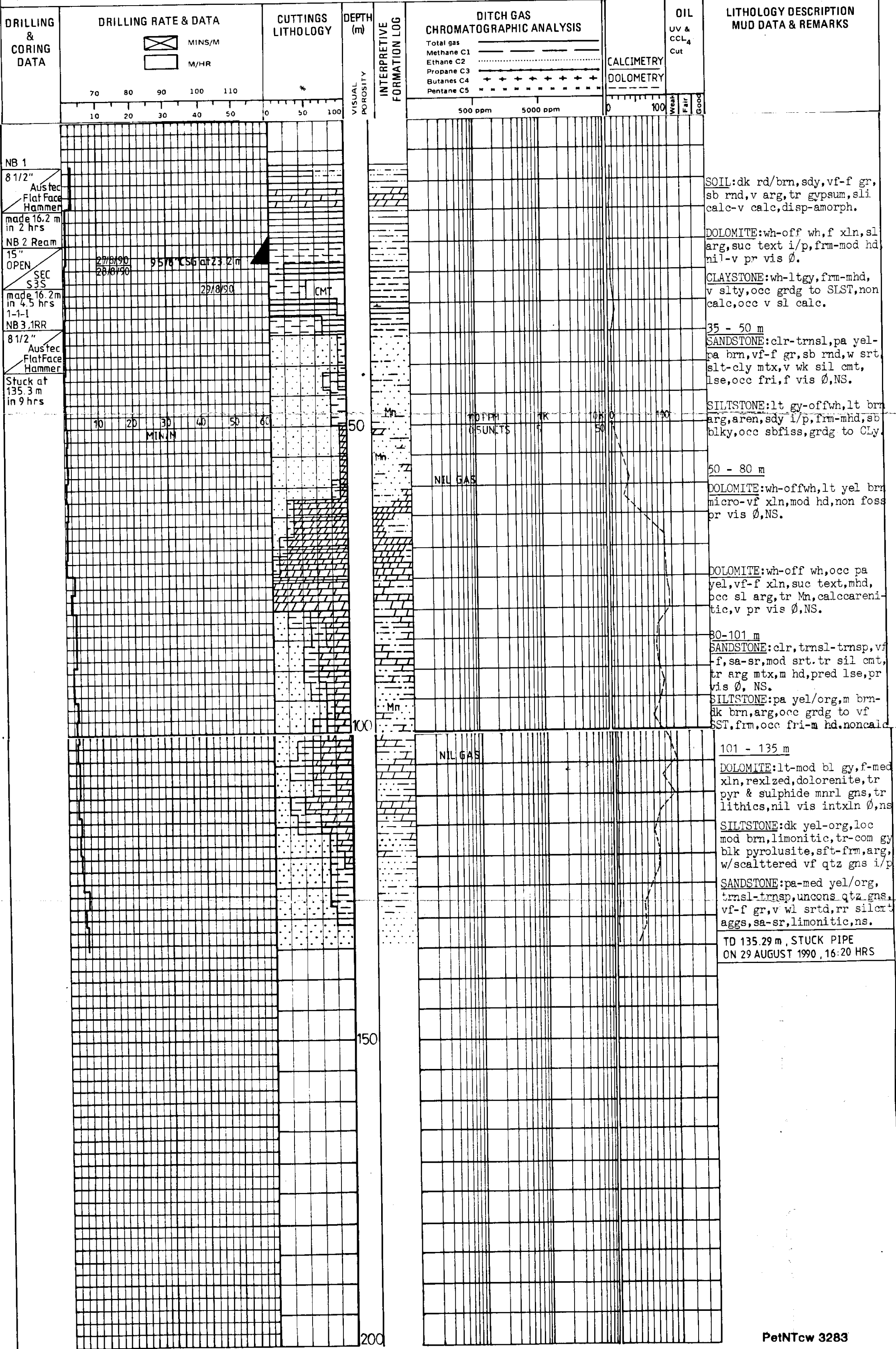
CASING AND HOLE DATA

MUD DATA

W	Weight lb/gal	CK	Cake thickness 32nd inch
MG	Mud gradient psi/1000 ft	S	Salinity gm/ltr Cl
V	Funnel viscosity sec/qt	SD	Sand content % by volume
PV	Plastic viscosity Cps	O	Oil content % by volume
YP	Yield point lbs/100 ft	WL	Water loss % by volume
GEL	Gel strength lbs/100 ft	SOL	Solids content % by volume
pH		PI	Alkalinity of filtrate
F	Filtrate API ml/30 minutes	GYP	Gypsum total/dissolved

MATRIX POROSITY	VUGULAR POROSITY
slightly porous < 10%	isolated vugs < 10%
porous 10-30%	isolated vugs > 10%
Mixed porosity > 10%	visibly interconnected vugs < 10%

BIT SIZE	HOLE DEPTH	CASING SIZE	CASING SHOE
12 1/4"	23.2 m	9 5/8"	23.2 m



PR90/086B