



# DAVIS 1

## Composite Logs

Company	MOONIE OIL COMPANY LIMITED
Well Name	DAVIS NO. 1
Field	WILDCAT
Country	AUSTRALIA
State	NORTHERN TERRITORY
Field Location	ADELAIDE
Latitude	022 15' 00.000" S DMS
Longitude	131 05' 00.000" E DMS
Perm. Datum	GL
Elevation Perm. Datum	1968.50 FT
Elevation KB (wrt EPD)	1988.70 FT
Elevation DF (wrt EPD)	1987.70 FT
Elevation GL (wrt EPD)	1968.50 FT
Elev. Log Zero (wrt EPD)	1988.70 FT
Log measured from	KB
Drill measured from	KB
Service Order No	4102
Date Plotted	Wednesday, June 17, 2009
Time Plotted	8:44:26 AM

### Run Information

Run number	1	2			
Log date	7/ 5/81	7/ 5/81			
Depth-Driller	705.00 FT	6229.00 FT			
Depth-Logger	702.00 FT	6230.00 FT			
Bottom log interval	690.00 FT	6229.00 FT			
Top log interval	48.00 FT	699.00 FT			
Casing-Driller	43.00 FT	699.00 FT			
Casing-Logger	48.00 FT	699.00 FT			

Casing Diameter	10.750	10.750		
Bit Size	13.750	9.875		
Hole Fluid type	Chem. Gel	Chem. Gel		
Fluid Density		8.400 G/CC		
Fluid Viscosity	38.00 SEC	40.00 SEC		
Fluid PH		10		
Fluid Loss		9.60 C3		
Mud Sample Source		FLOWLINE		
RM @ Surface		1.300 OHMM		
Mud temp @ Surface		25.56 DEGC		
RMF @ Surface		1.200 OHMM		
MF temp @ Surface		27.78 DEGC		
RMC @ Surface		1.500 OHMM		
MC temp @ Surface		28.89 DEGC		
Mud Filtrate Sample Source		MEAS		
Mud Cake Sample Source		MEAS		
RM @ Bottom		0.690 OHMM		
Mud temp @ Bottom		66.67 DEGC		
RMF @ Bottom		1.200 OHMM		
MF temp @ Bottom		27.78 DEGC		
RMC @ Bottom		1.500 OHMM		
MC temp @ Bottom		28.89 DEGC		
Time circ. stopped	1700	1430		
Date circ. stopped	15.04.1981	07.05.1981		
Time logger at btm	2021	2130		
Date logger at btm	15.04.1981	07.05.1981		
Bottom hole temp	32.22 DEGC	66.67 DEGC		
Max recorded temp	32.22 DEGC	66.67 DEGC		
Logging unit No	DDL-003	DDL-003		
Logging unit Loc	ADELAIDE	ADELAIDE		
Logging Company ID	30	30		
Recorded by	L.WHITE	L.WHITE		
Witness	F.BAARDER	F.BAARDER		
API Serial Number	0	0		

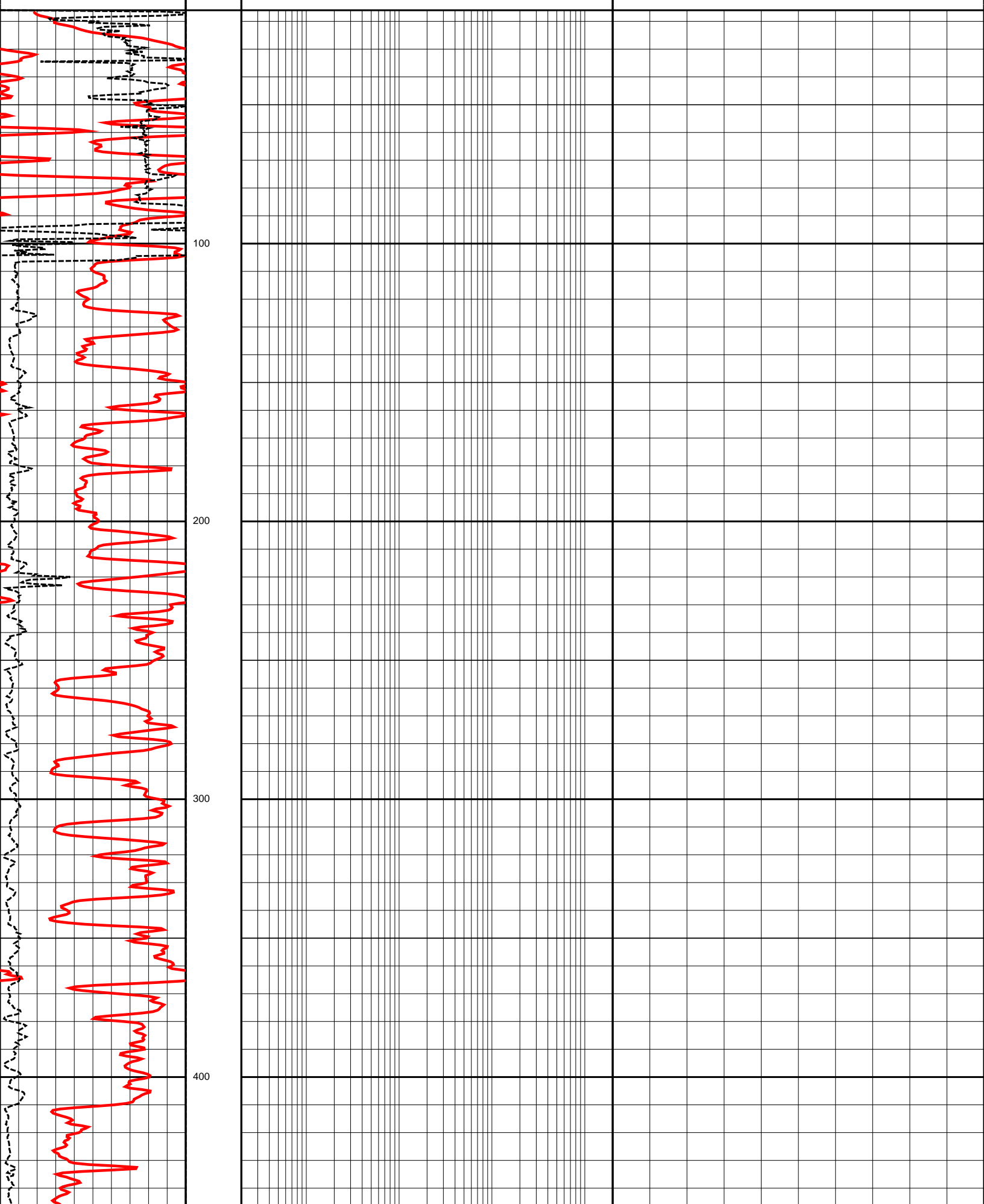
Logs loaded, edited and merged from LIS format file by CDP in May 2009  
Well header information completed from scanned PDF well header  
\*\*\*\*\*  
Other Remarks from scanned PDF well header  
Run 1: Sonic stopped at 106' (fluid level)  
Run 2: Sonic run in combination with Dual Induction

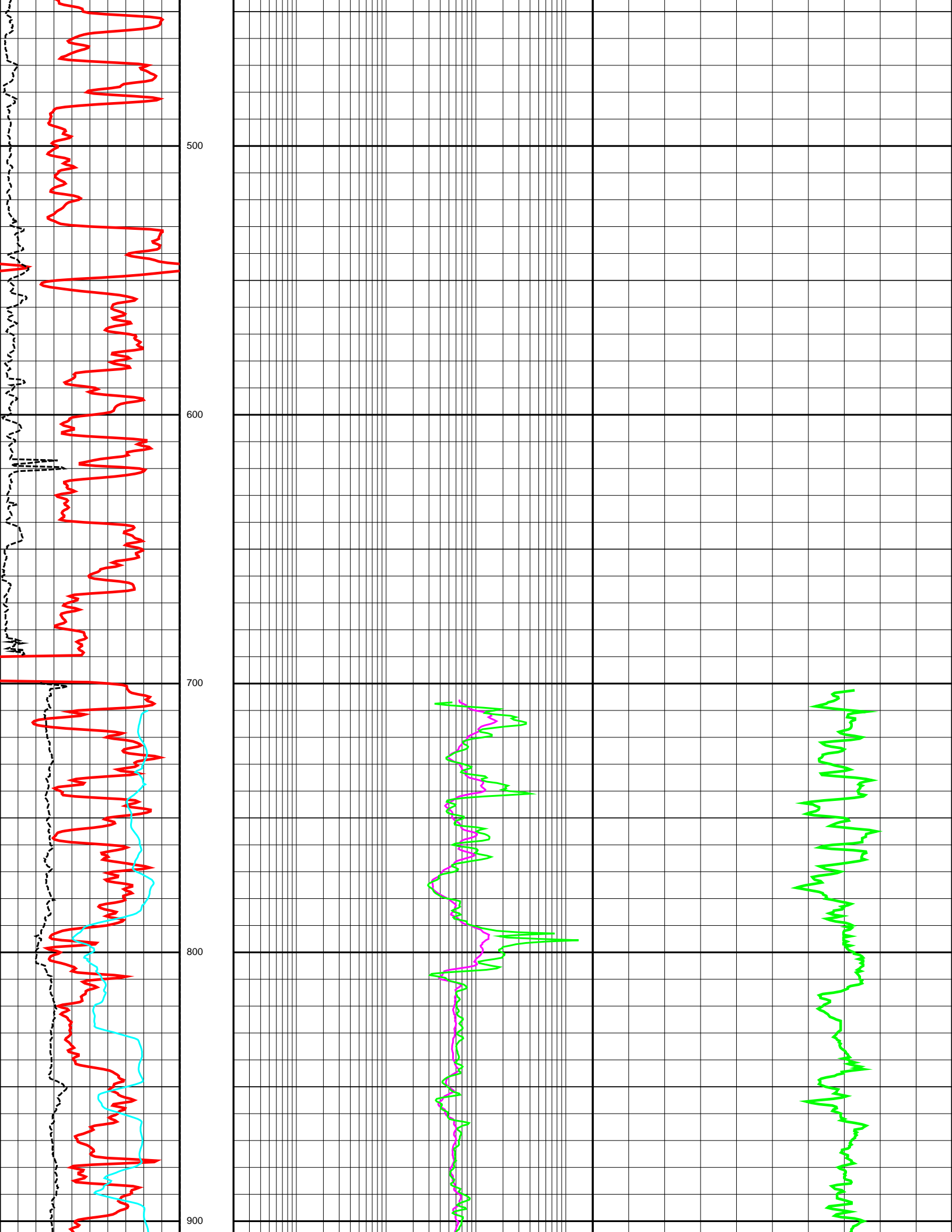
Since well log interpretations are opinions based upon inferences from well logs, we cannot and do not guarantee the correctness or accuracy of any interpretation. Therefore we shall not be liable or responsible for any loss, damage, cost or expense incurred or sustained by anyone resulting from any interpretation.

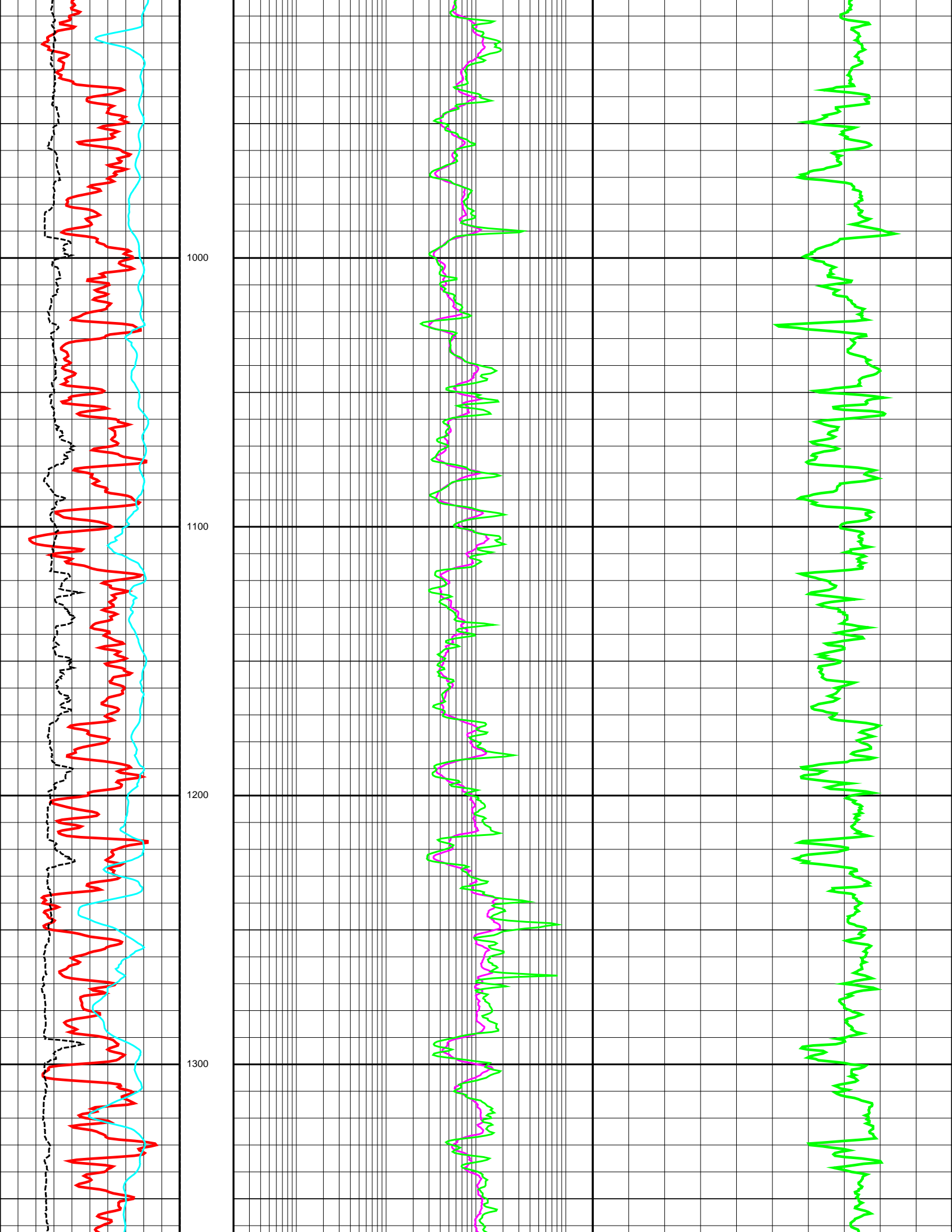
## Log Description

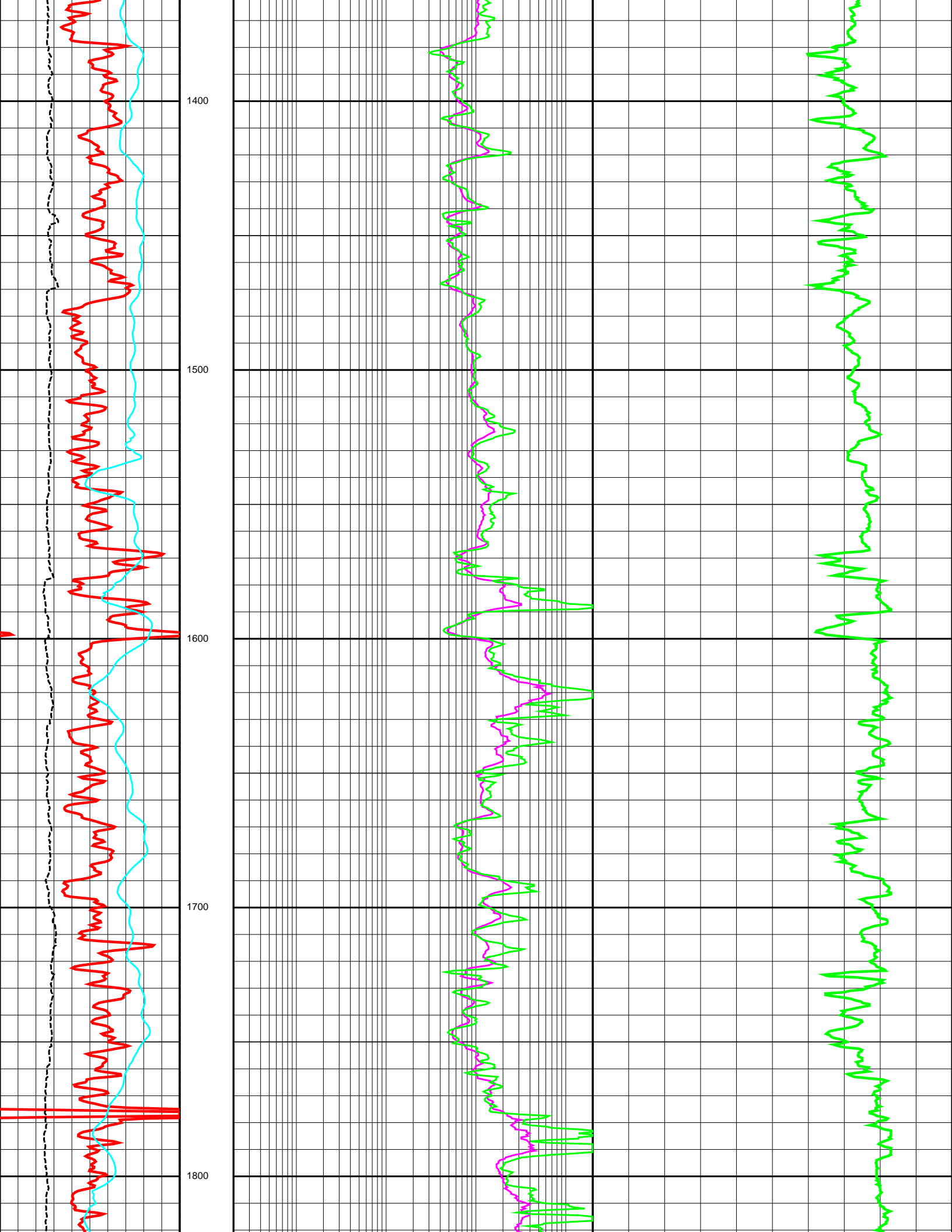
GR	Gamma Ray
CALI	Caliper
SP	Spontaneous Potential Log
ILD	Deep Induction Log
ILM	Medium Induction Log
DT	Delta T Compressional
TENS	Cable tension at surface

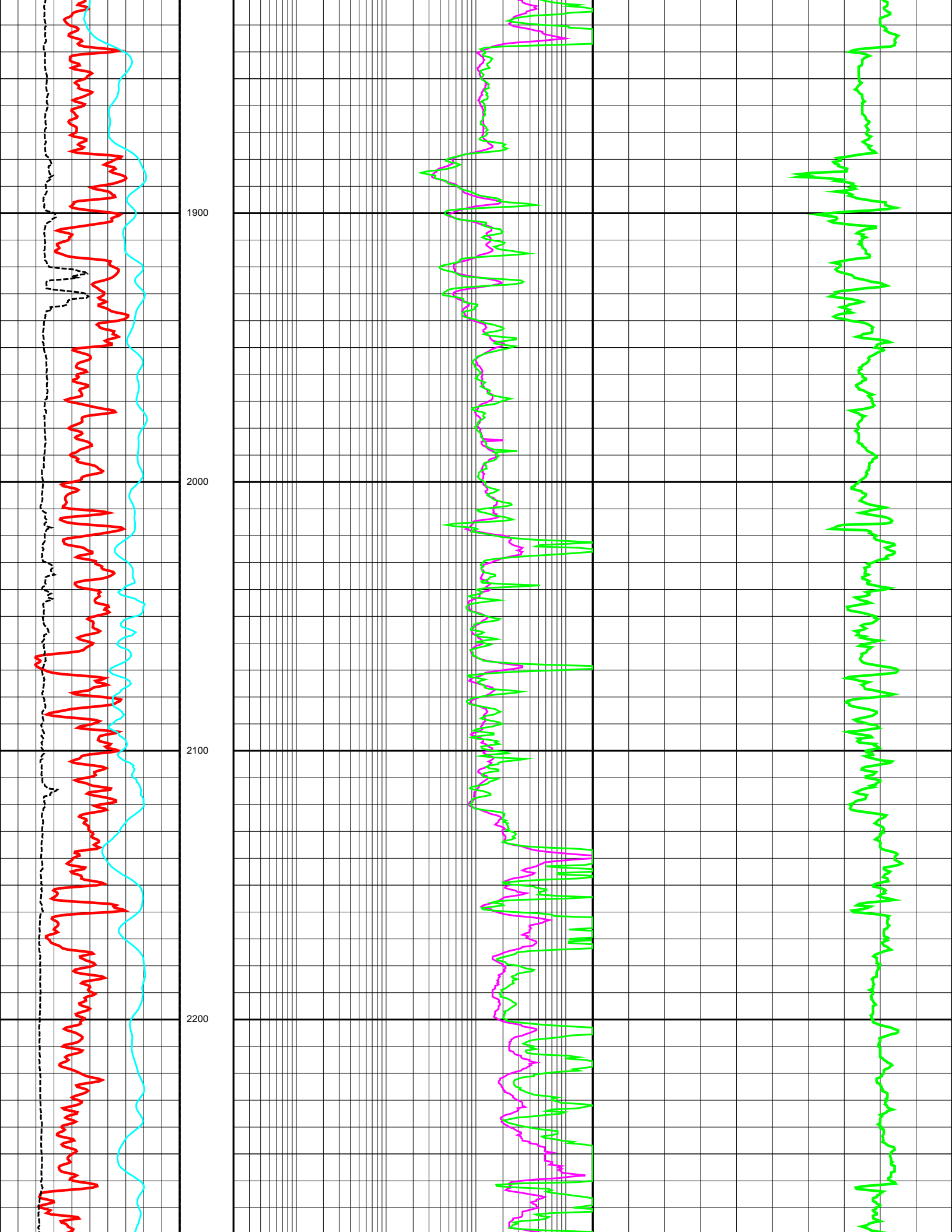
0.0	GR (API)	200.0	0.2	ILD (OHMM)	2000.0	140.0	DT (US/F)	40.0
6.0	CALI (INCH)	26.0	0.2	ILM (OHMM)	2000.0			
-80.0	SP (MV)	20.0						
	DEPTH	FT						
		1:500						

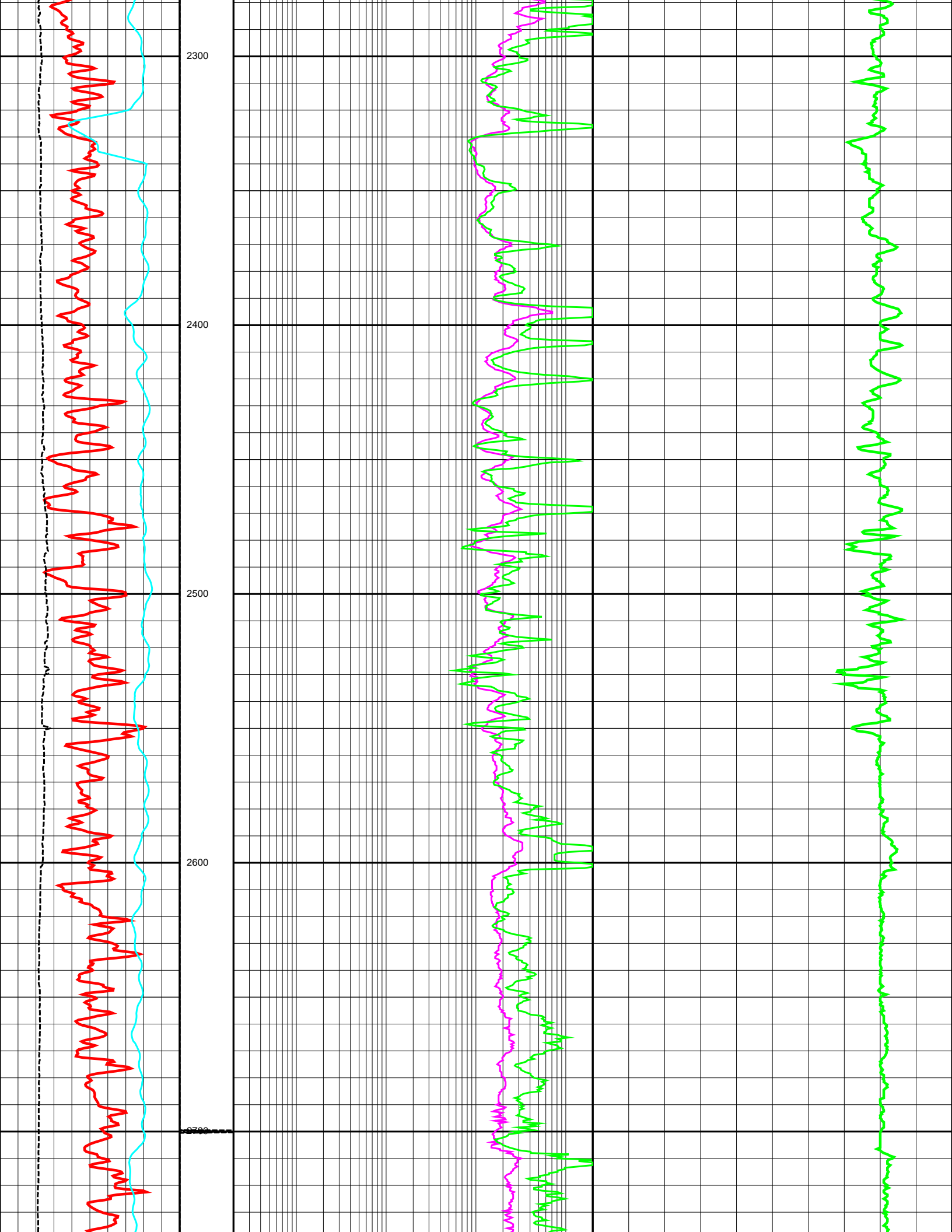




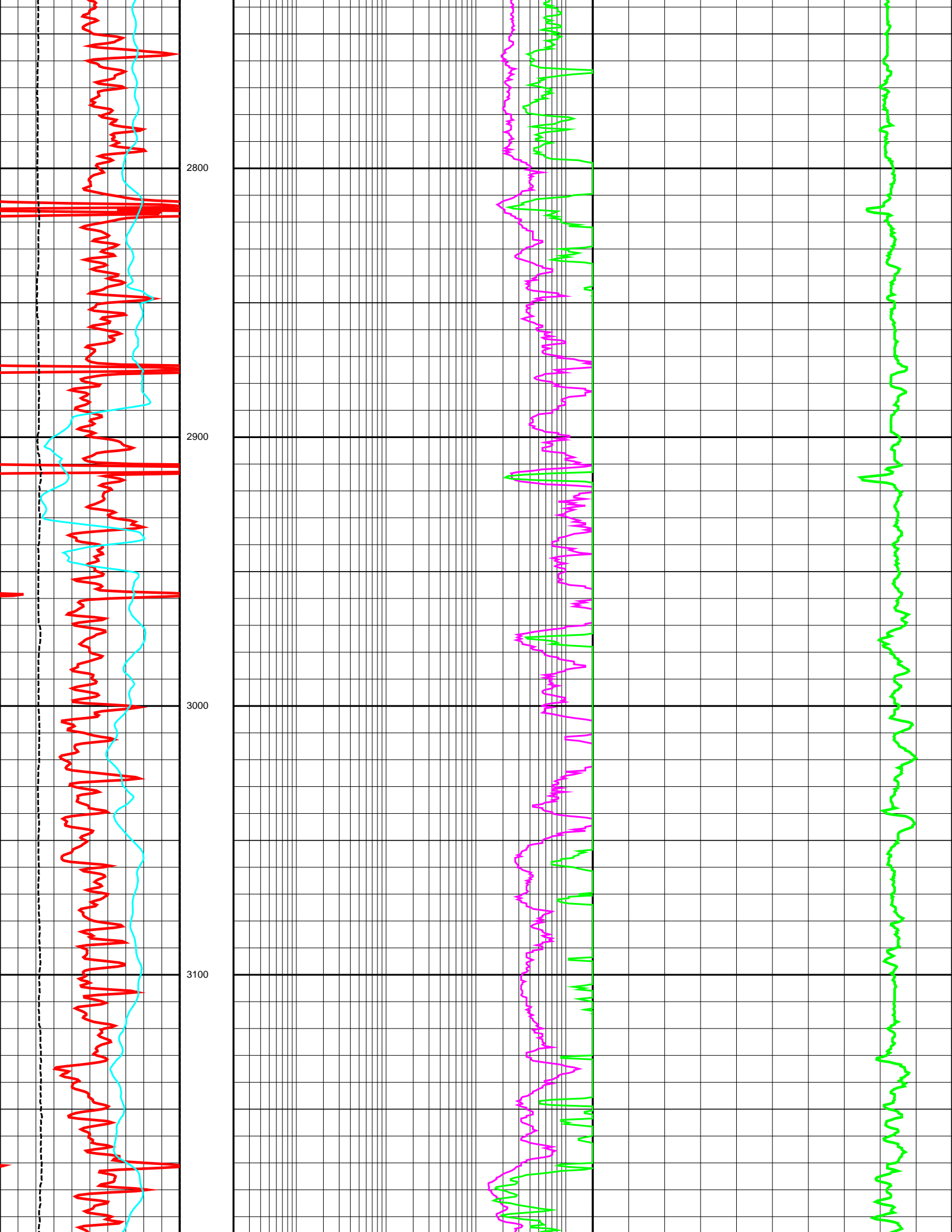


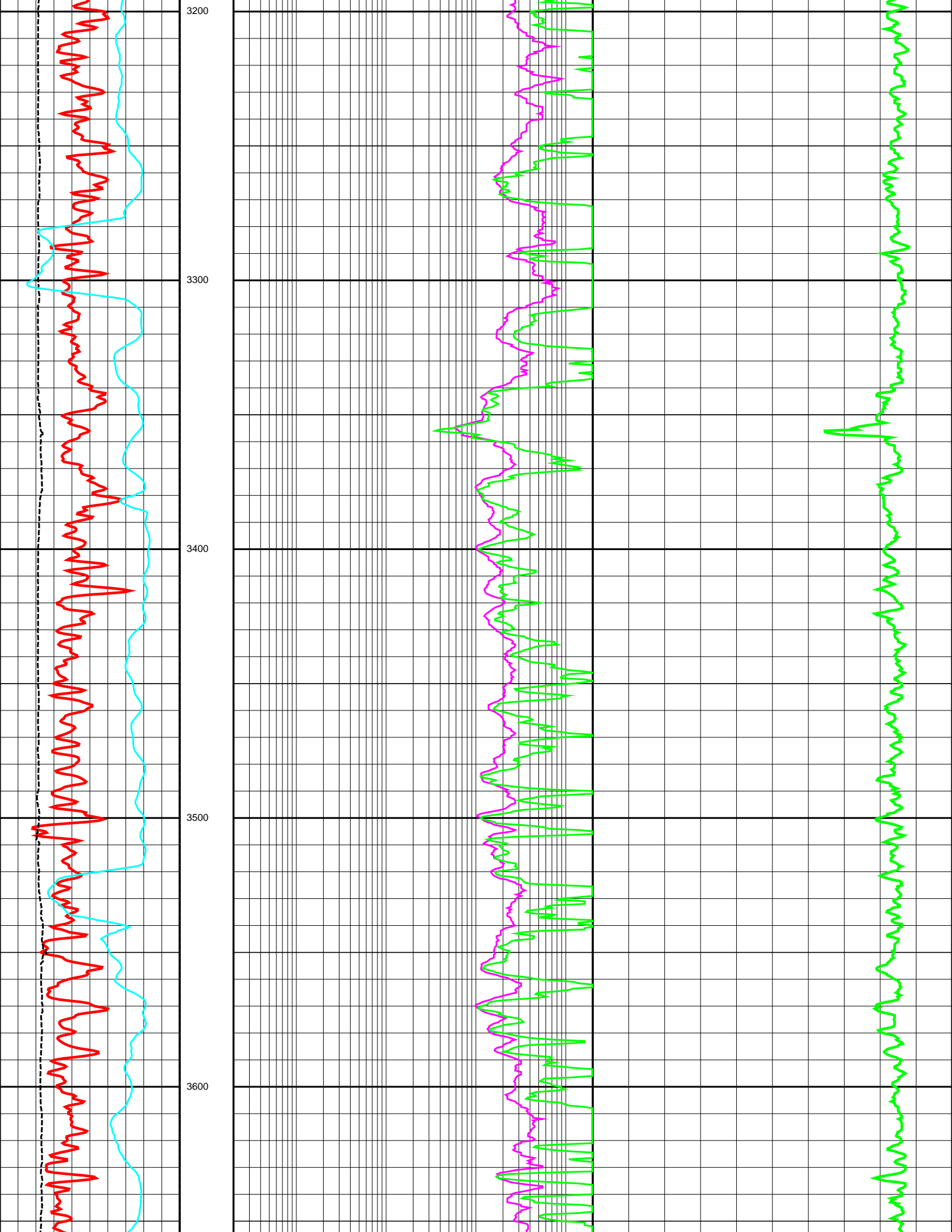


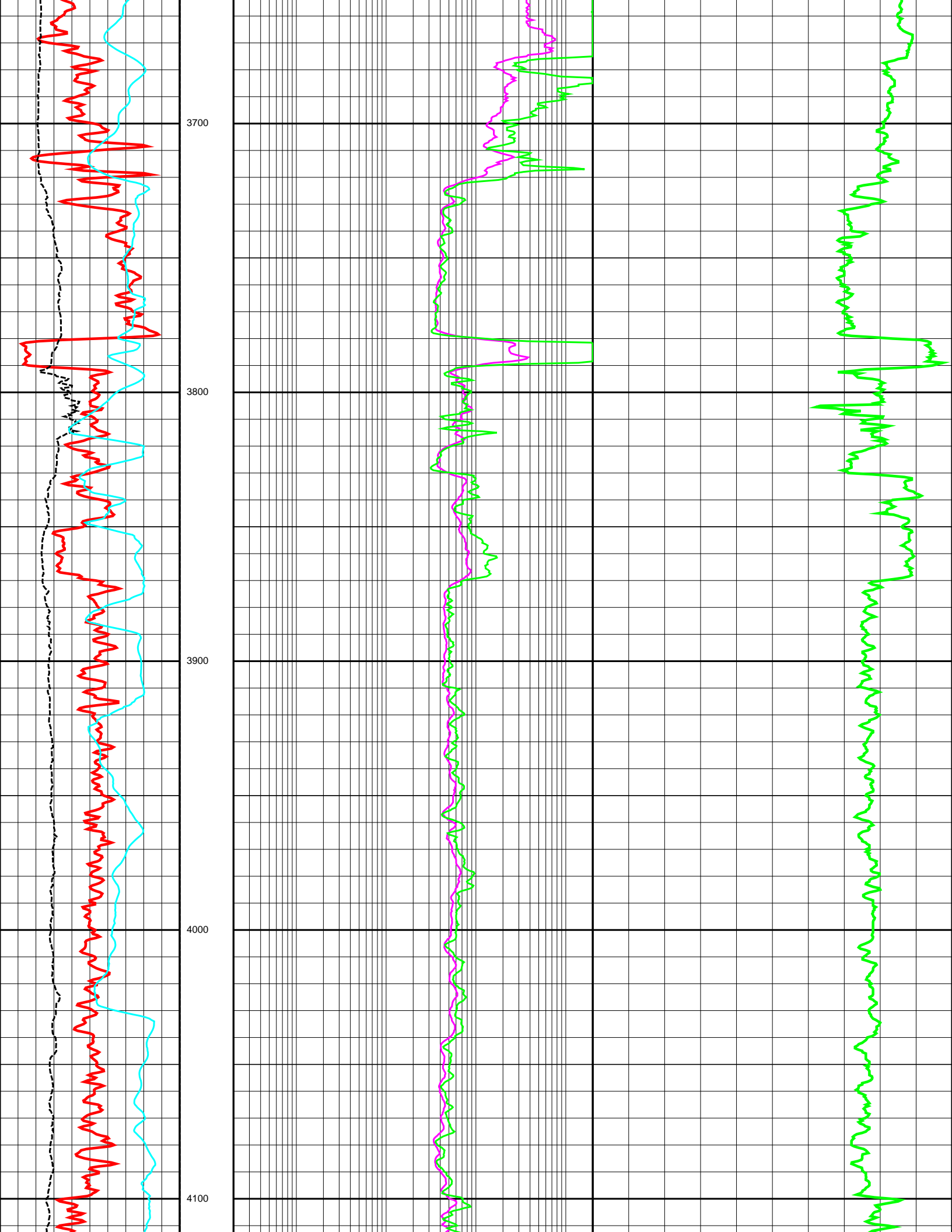


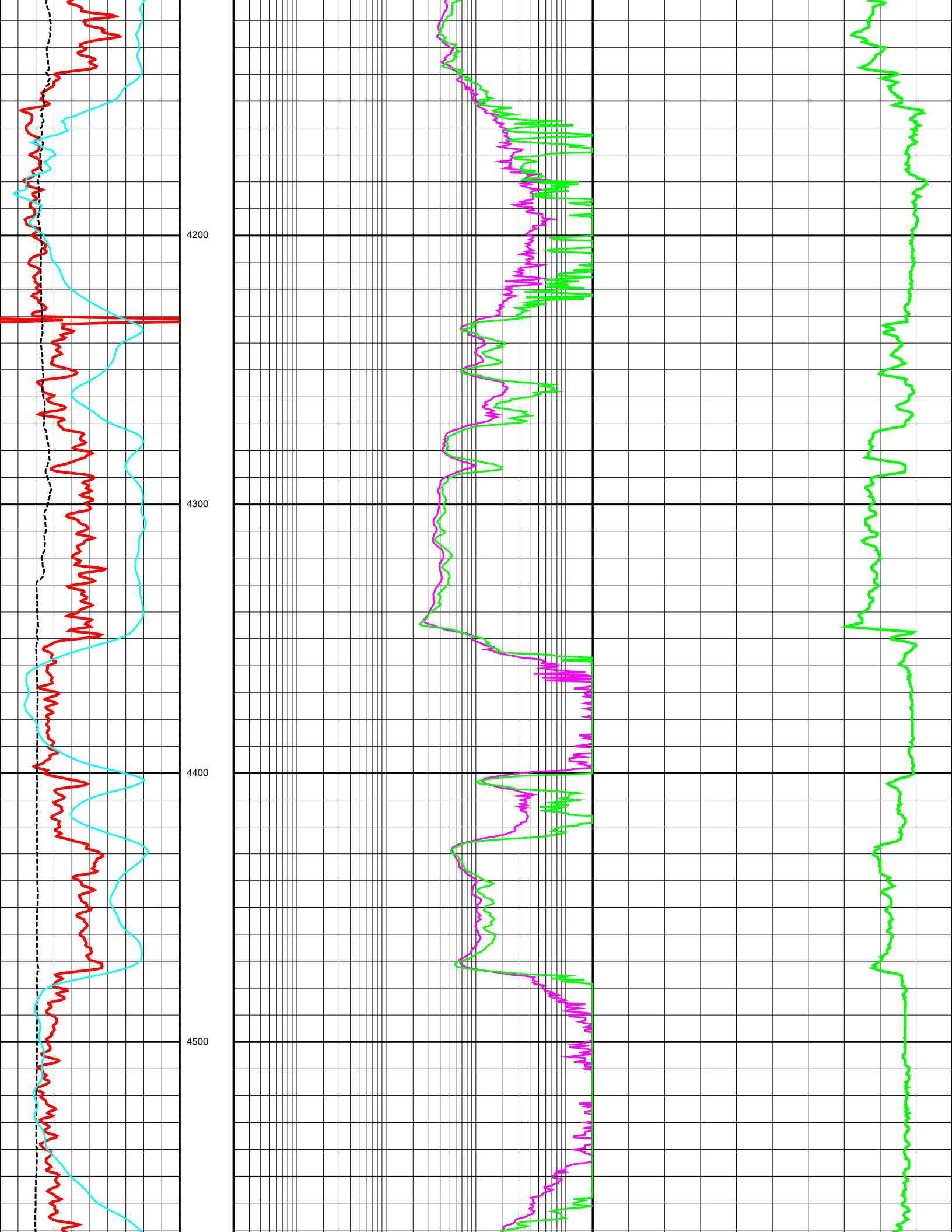


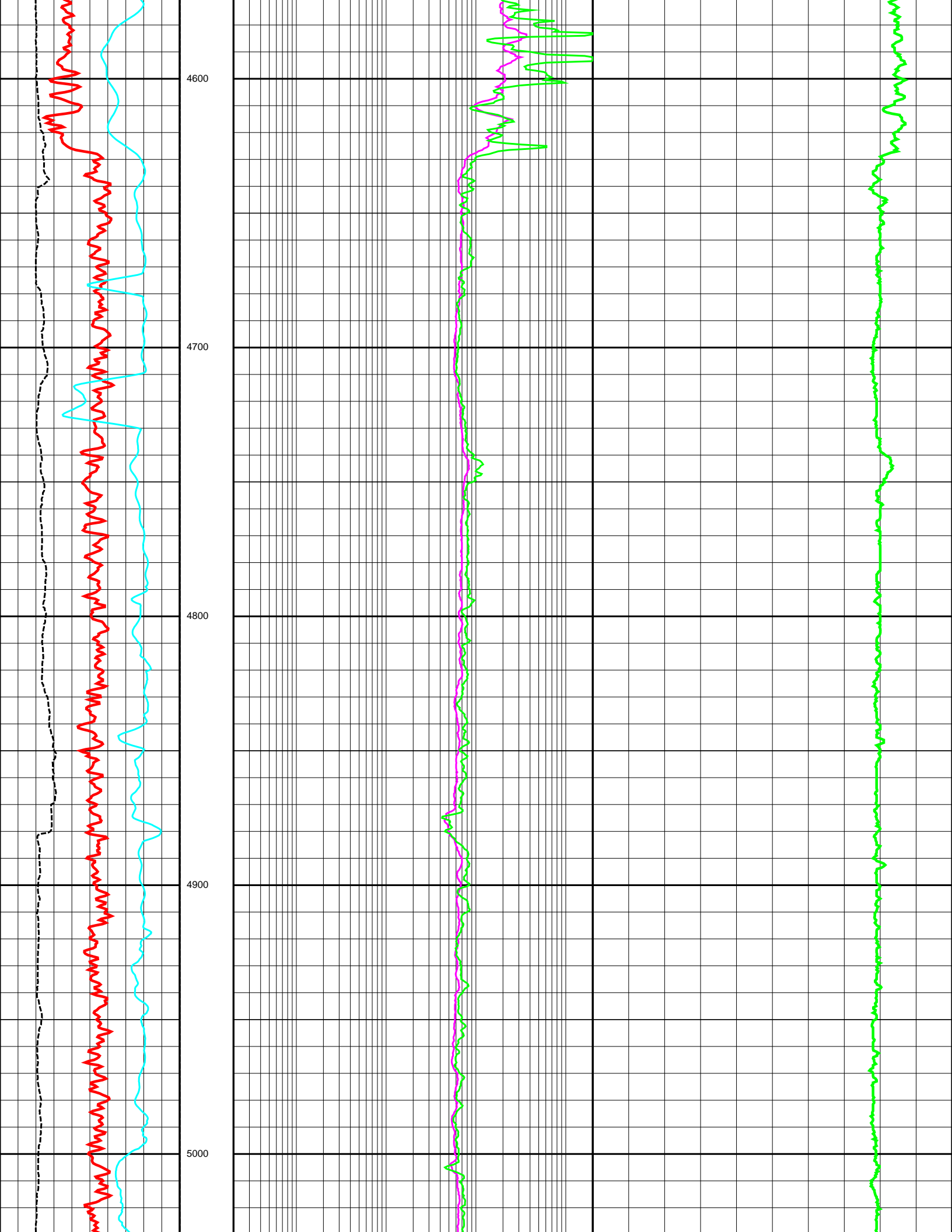


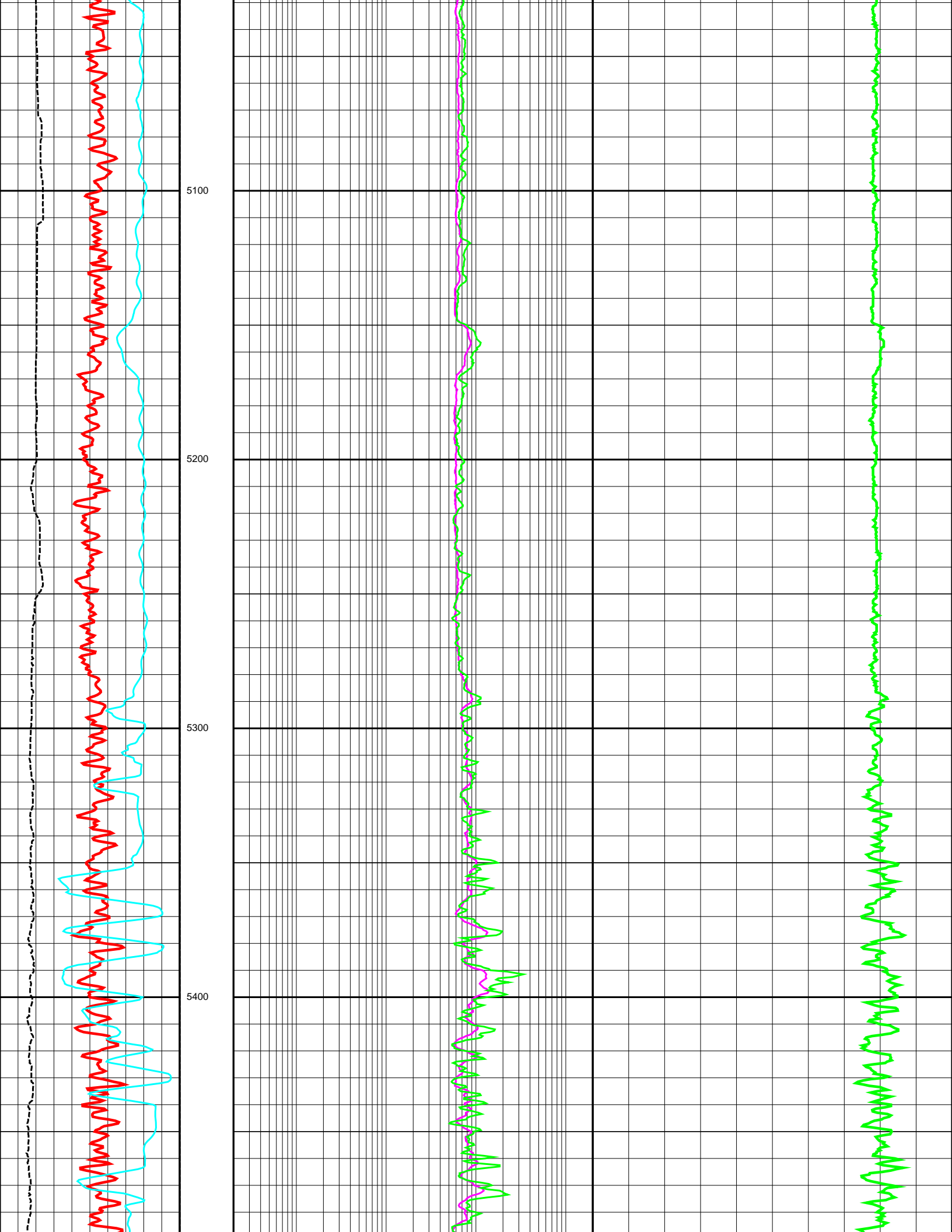


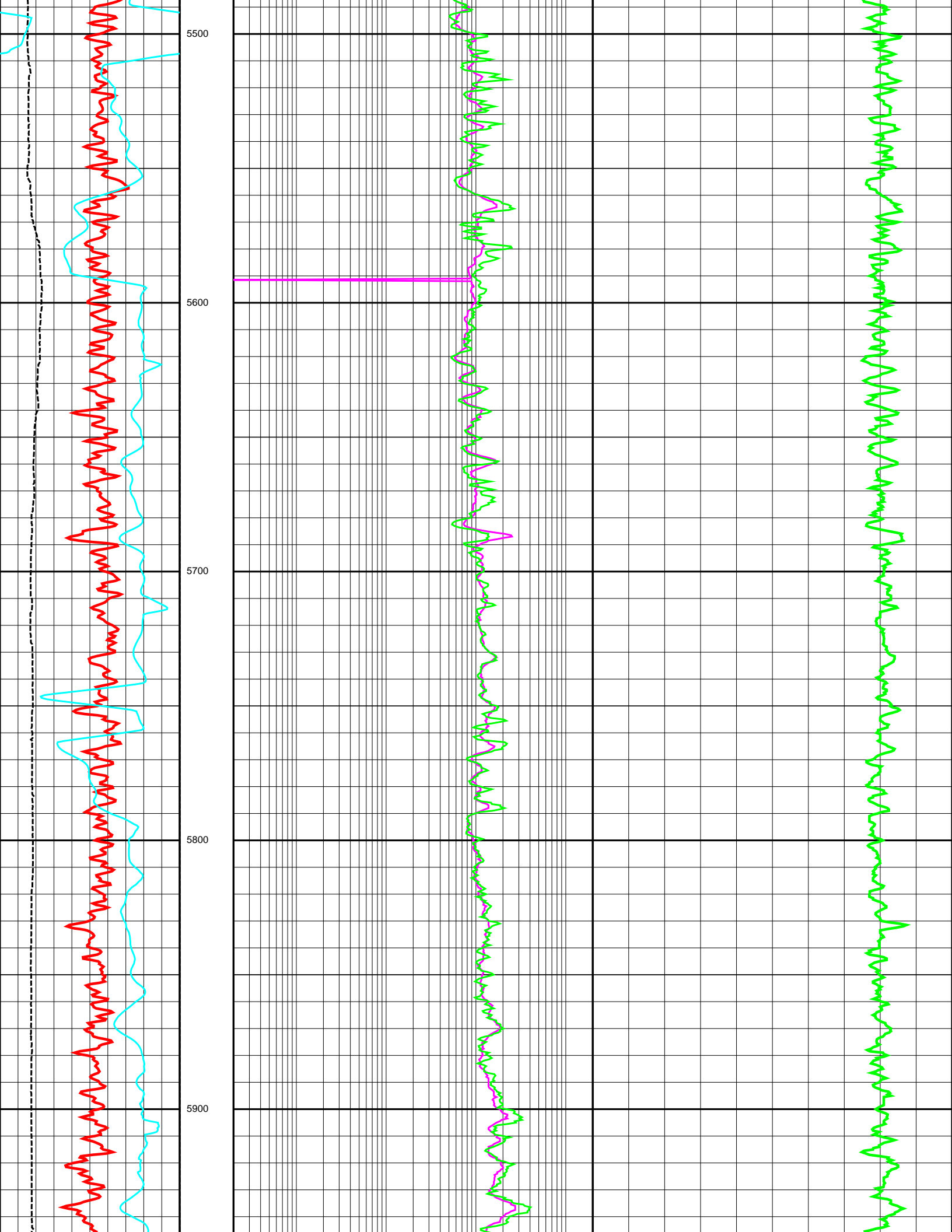


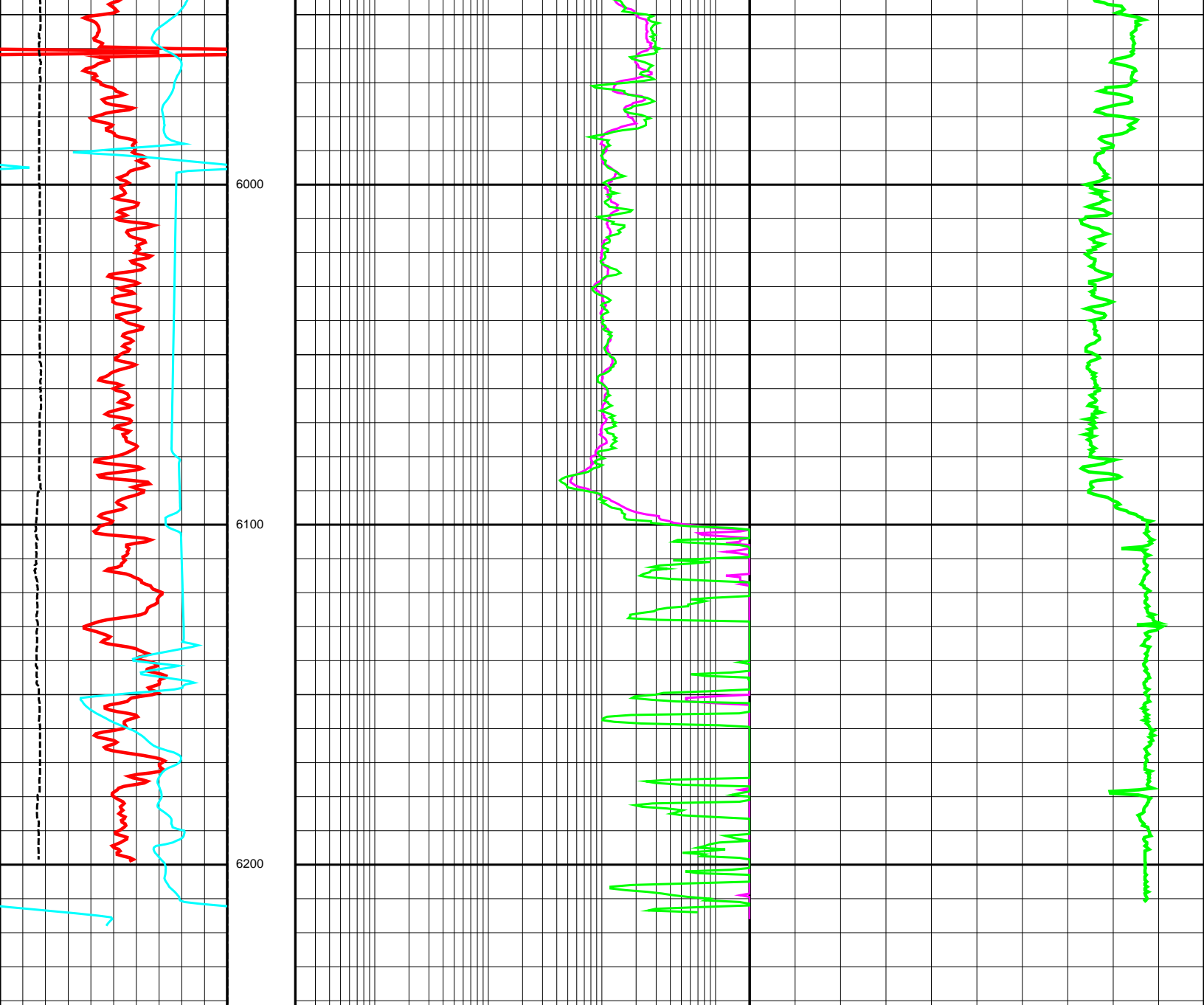












0.0	GR (API)	200.0	0.2	ILD (OHMM)	2000.0	140.0	DT (US/F)	40.0
6.0	CALI (INCH)	26.0	0.2	ILM (OHMM)	2000.0			
-80.0	SP (MV)	20.0						

DEPTH  
FT  
1:500