

UNDANDITA #2

Composite Logs

Company	MAGELLAN PETROLEUM
Well Name	UNDANDITA #2
Field	AMADEUS
Township	ALICE SPRINGS
Country	AUSTRALIA
State	NORTHERN TERRITORY
Continent	AUSTRALIA
Latitude	023 42' 49.050" S DMS
Longitude	131 55' 59.520" E DMS
Perm. Datum	MSL
Elevation Perm. Datum	0.00 M
Elevation KB (wrt EPD)	770.84 M
Elevation GL (wrt EPD)	764.13 M
Elev. Log Zero (wrt EPD)	770.84 M
Above Perm. Datum	770.84 M
Log measured from	KB
Other Services Ln 1	SLS GR
Other Services Ln 2	FMS
Other Services Ln 3	DLL MSFL GR
Other Services Ln 4	LDL CNL GR
Other Services Ln 5	SAS
Other Services Ln 6	CST
Date Plotted	Wednesday, 7 October 2009
Time Plotted	9:51:48 AM

Run Information

Run number	1			
Log date	08-JUL-88			
Depth-Driller	2560.32 M			
Depth-Logger	2559.25 M			

Bottom log interval	2560.32 M				
Top log interval	2566.42 M				
Bit Size	8.500 INCH				
Hole Fluid type	KCL POLYMER				
Fluid Density	8.600 G/CC				
Fluid Viscosity	38.00 SEC				
Fluid PH	10				
Fluid Loss	8.00 C3				
Mud Sample Source	FLOWLINE				
RM @ Surface	0.220 OHMM				
Mud temp @ Surface	21.00 DEGC				
RMF @ Surface	0.260 OHMM				
MF temp @ Surface	20.00 DEGC				
RMC @ Surface	0.305 OHMM				
MC temp @ Surface	20.00 DEGC				
Mud temp @ Bottom	75.56 DEGC				
Surface hole temp	22.78 DEGC				
Bottom hole temp	72.22 DEGC				
Max recorded temp	72.22 DEGC				
Logging unit No	2763				
Logging unit Loc	QEA ROMA				
Logging Company ID	440				
Recorded by	CHARLES HAJEK				
Witness	NICK MILNE / COLIN				
Operator's code	0				

SONIC LOG USED FOR CORRELATION
PINEAPPLE SHAPED BULLETS IN 13 LOWER SHOTS
HARD ROCK BULLETS IN TOP 17 SHOTS
ONLY 2 CORES RECOVERED DUE TO HARDNESS OF FORMATION;
AT 6812 AND AT 6150 FT
TEMP TAKEN FROM CHECK SHOT LOG

5420-700 feet NEUTRON POROSITY USED, DPHI READING HIGHER THAN EXPECTED 700-8400 FEET SONIC POROSITY USED, DUE TO EXTREMELY BAD

Logs loaded, edited and merged from LIS format file by CDP in June 2009
SP Log Basline Shift and log smoothed, Neutron API count converted to Neutron Porosity V/V
Well header information completed from scanned PDF well header

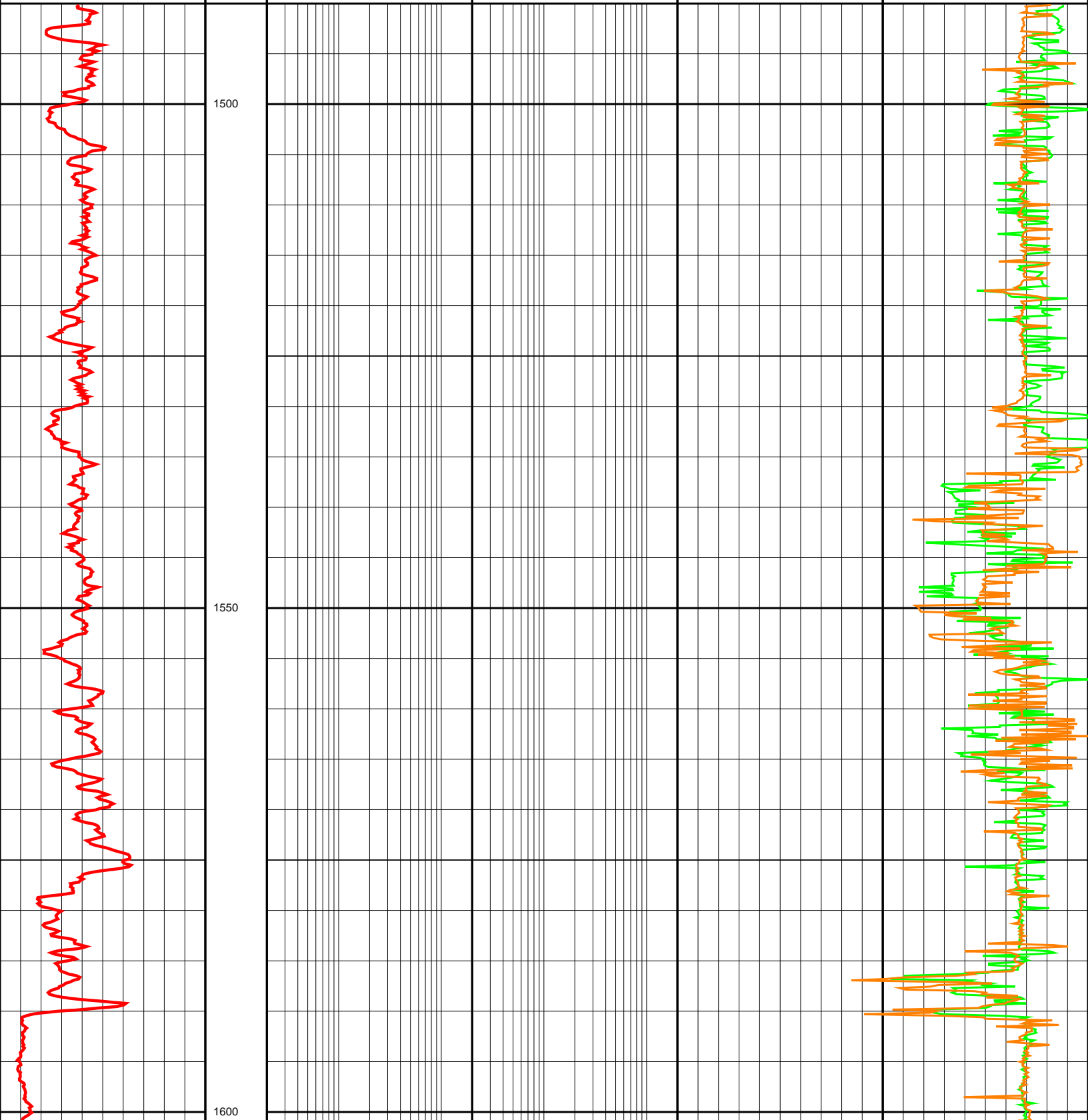
Since well log interpretations are opinions based upon inferences from well logs, we cannot and do not guarantee the correctness or accuracy of any interpretation. Therefore we shall not be liable or responsible for any loss, damage, cost or expense incurred or sustained by anyone resulting from any interpretation.

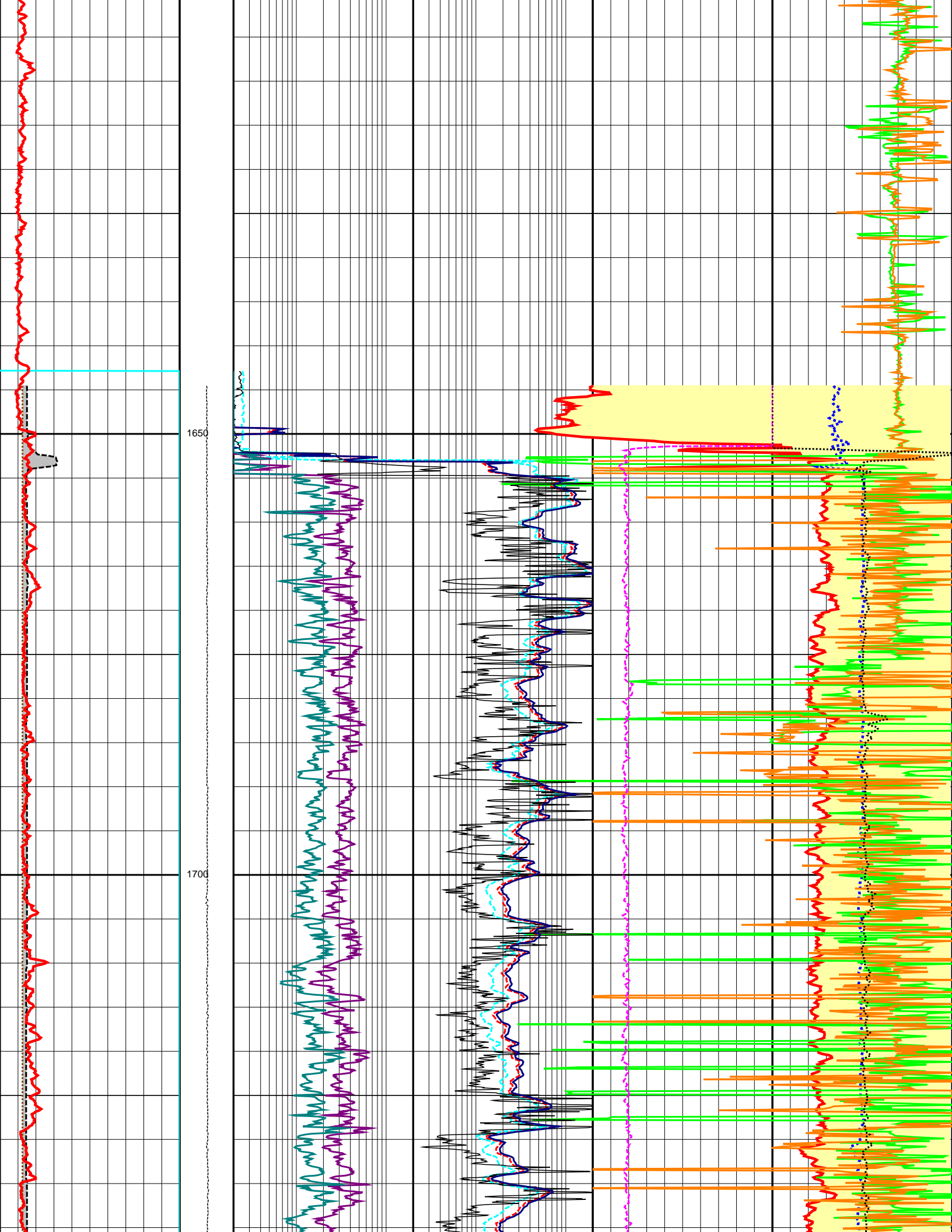
Log Description

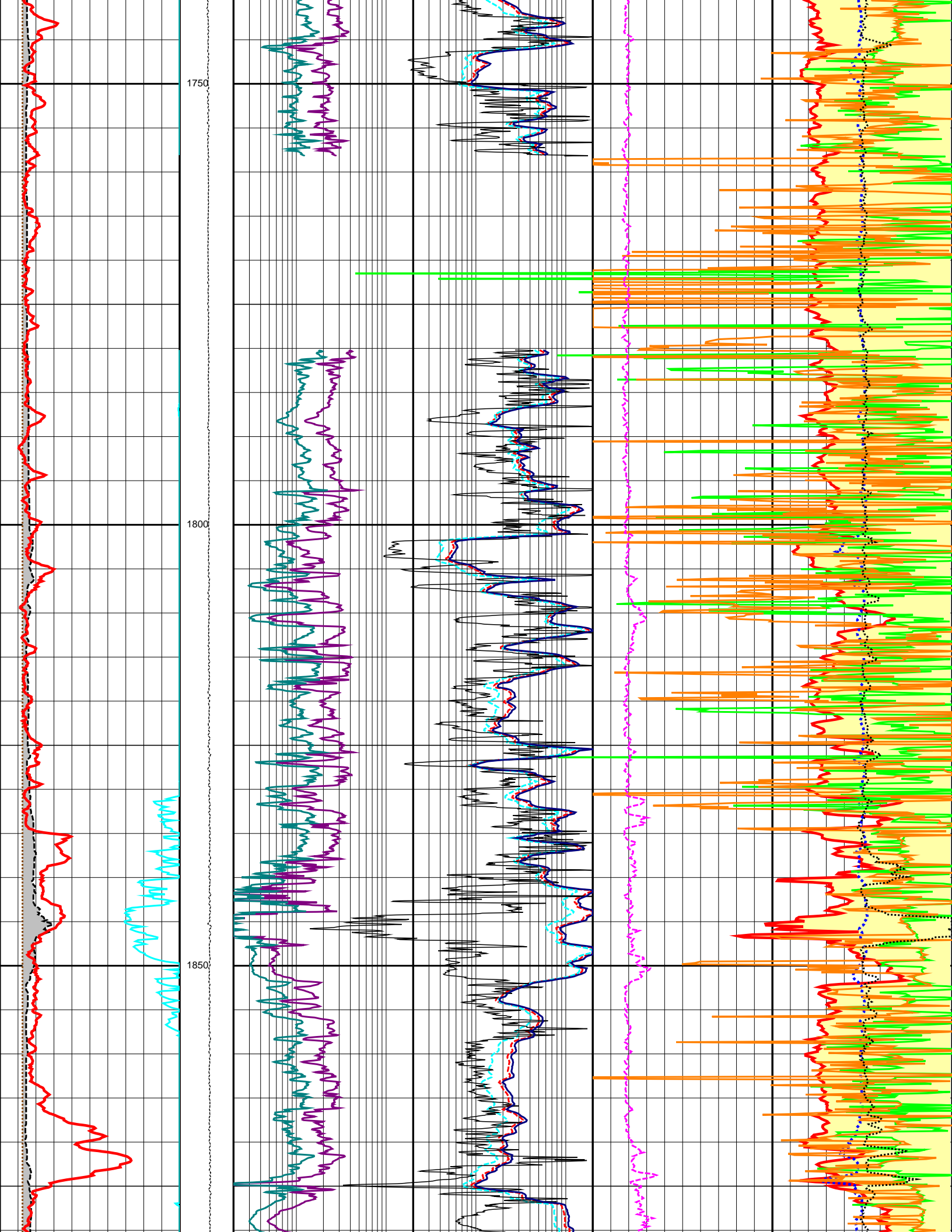
- RHOB Compensated Formation Density
- NPHI Neutron Porosity
- DT Delta T Compressional
- DTL Delta T Long Spacing
- PEF Photoelectric Factor
- BS Bit Size
- CALI Caliper
- SP Spontaneous Potential Log
- LLD Laterolog Deep Resistivity
- LLS Shallow Laterolog
- MSFL Micro Spherically Focused Log

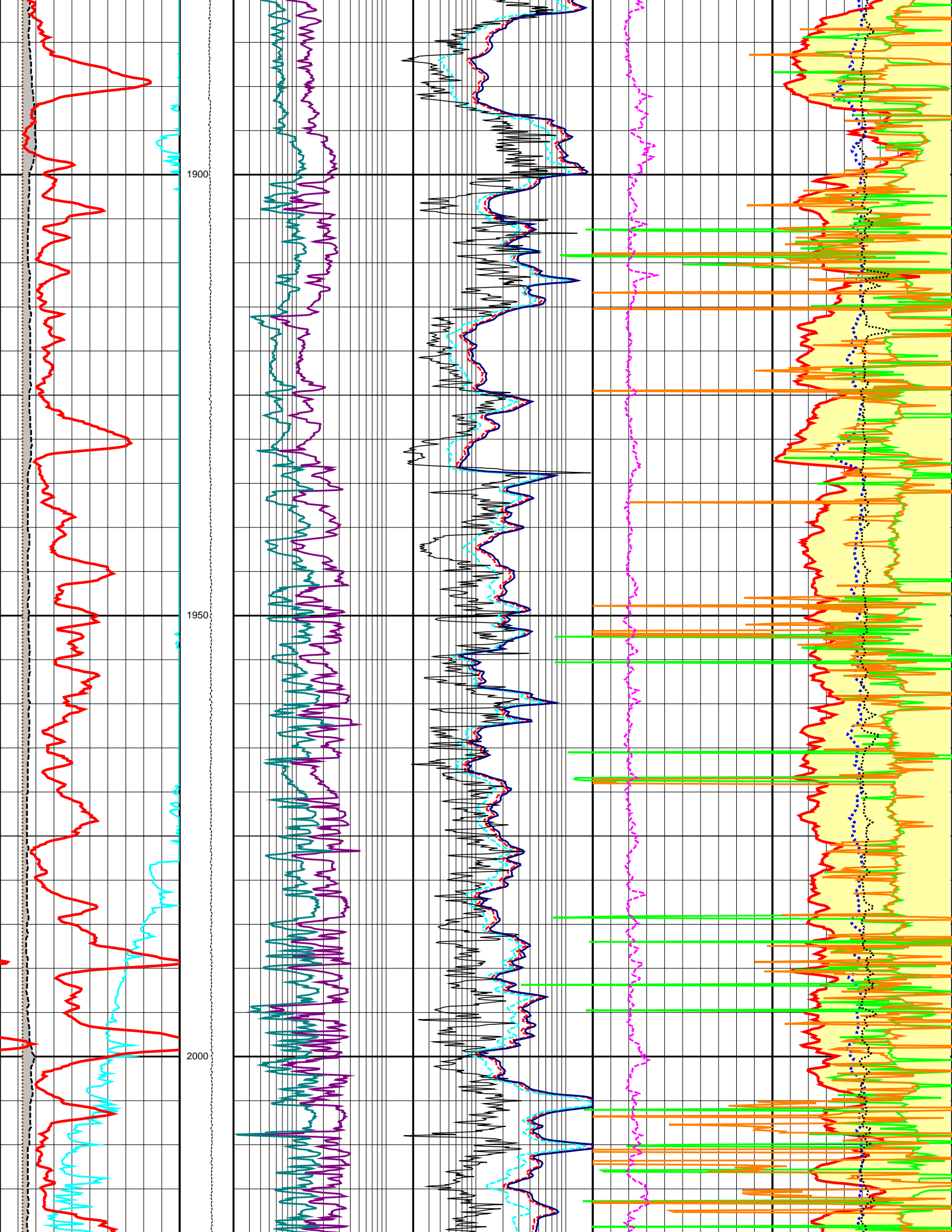
DRHO	Density Correction
TENS	Cable tension at surface
LLG	Gronigen Laterolog Resistivity
SMNO	Synthetic Micro Normal Resistivity
SMIN	Synthetic Micro Inverse Resistivity
GR	Gamma Ray

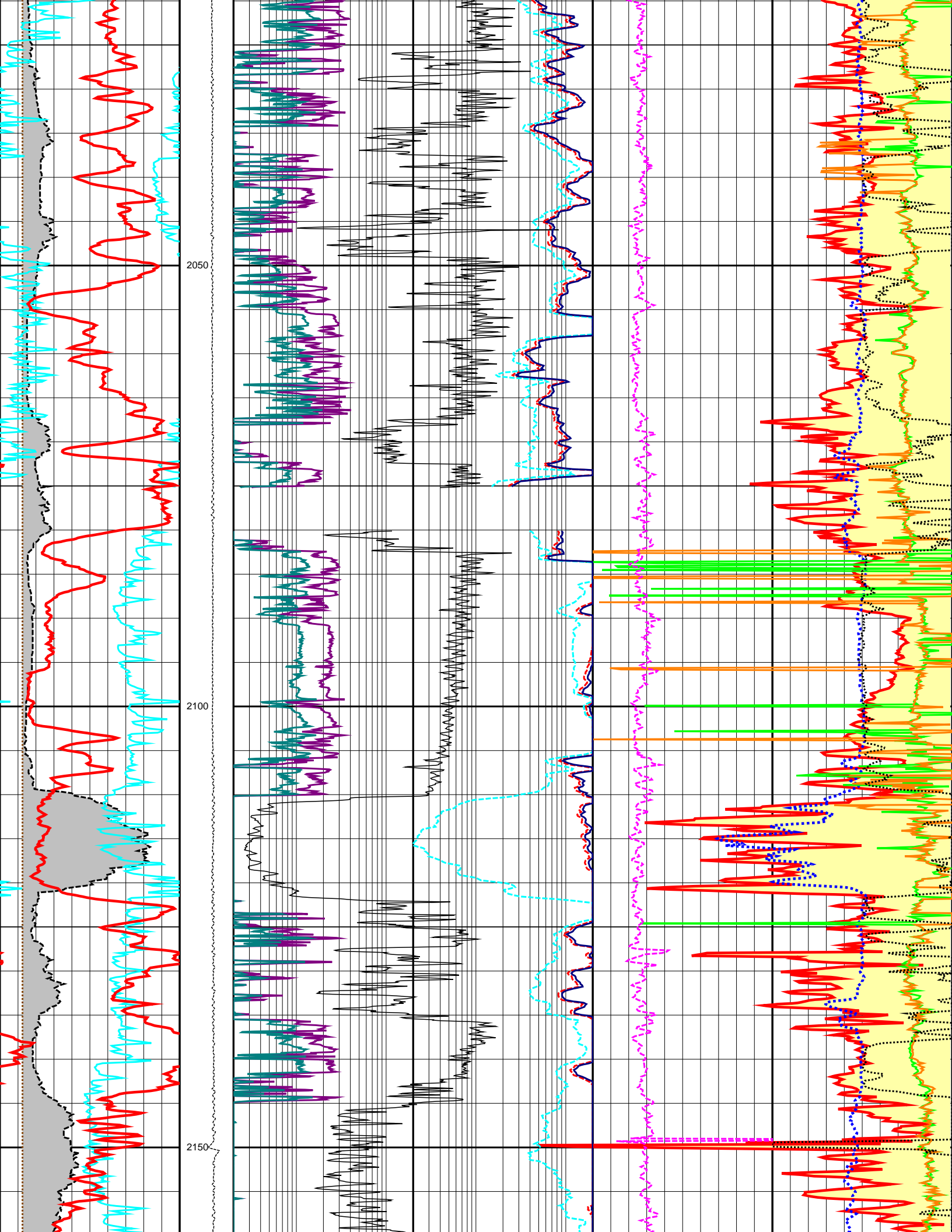
6.0	BS (INCH)	26.0	0.2	LLD (OHMM)	2000.0	1.95	RHOB (G/C3)	2.95
6.0	CALI (INCH)	26.0	0.2	LLS (OHMM)	2000.0	0.45	NPHI (V/V)	-0.15
-80.0	SP (MV)	20.0	0.2	MSFL (OHMM)	2000.0	140.0	DT (US/F)	40.0
0.0	GR (GAPI)	200.0	0.2	LLG (OHMM)	2000.0	140.0	DTL (US/F)	40.0
			0.2	SMNO (OHMM)	2000.0	0.0	PEF (B/E)	10.0
			0.2	SMIN (OHMM)	2000.0		DRHO (G/C3)	0.25

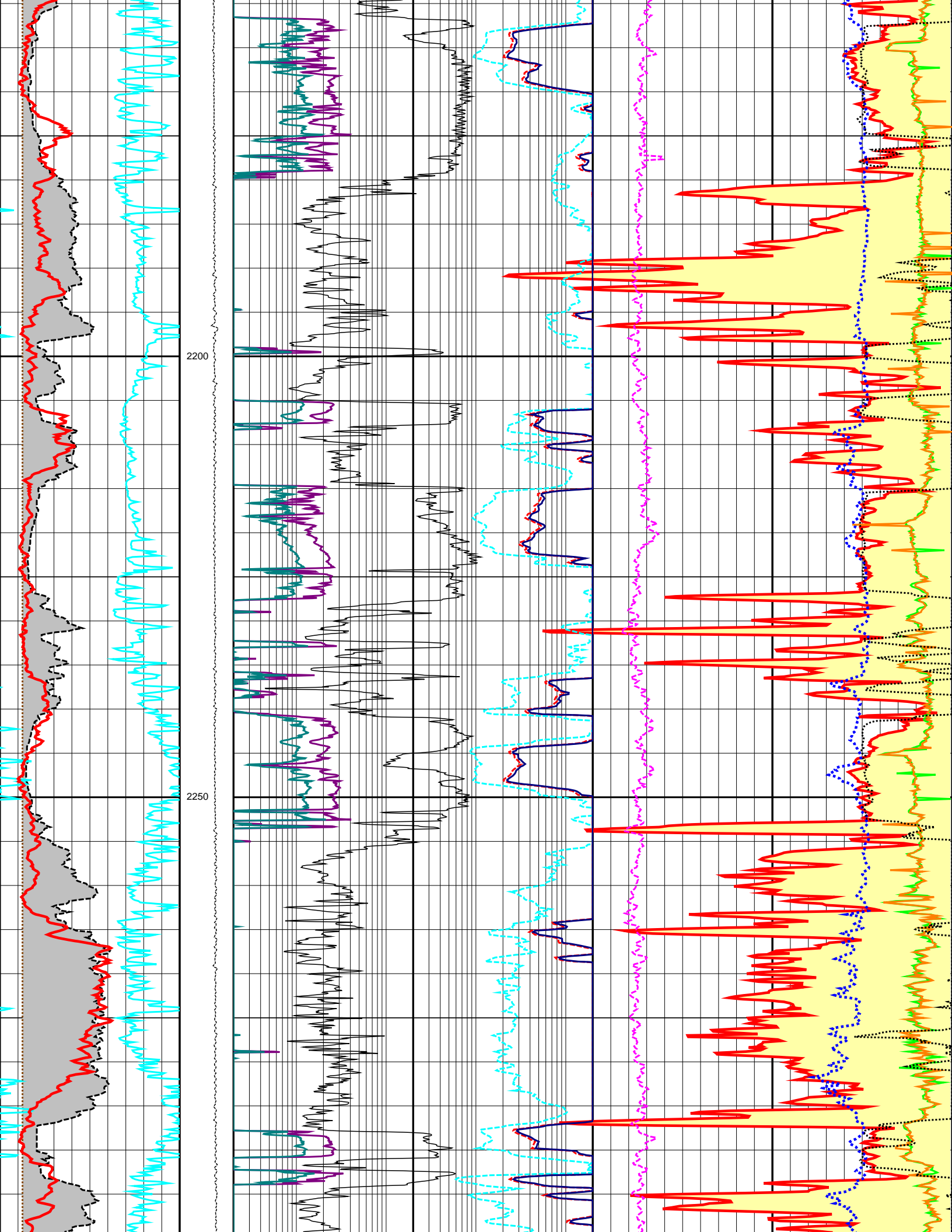


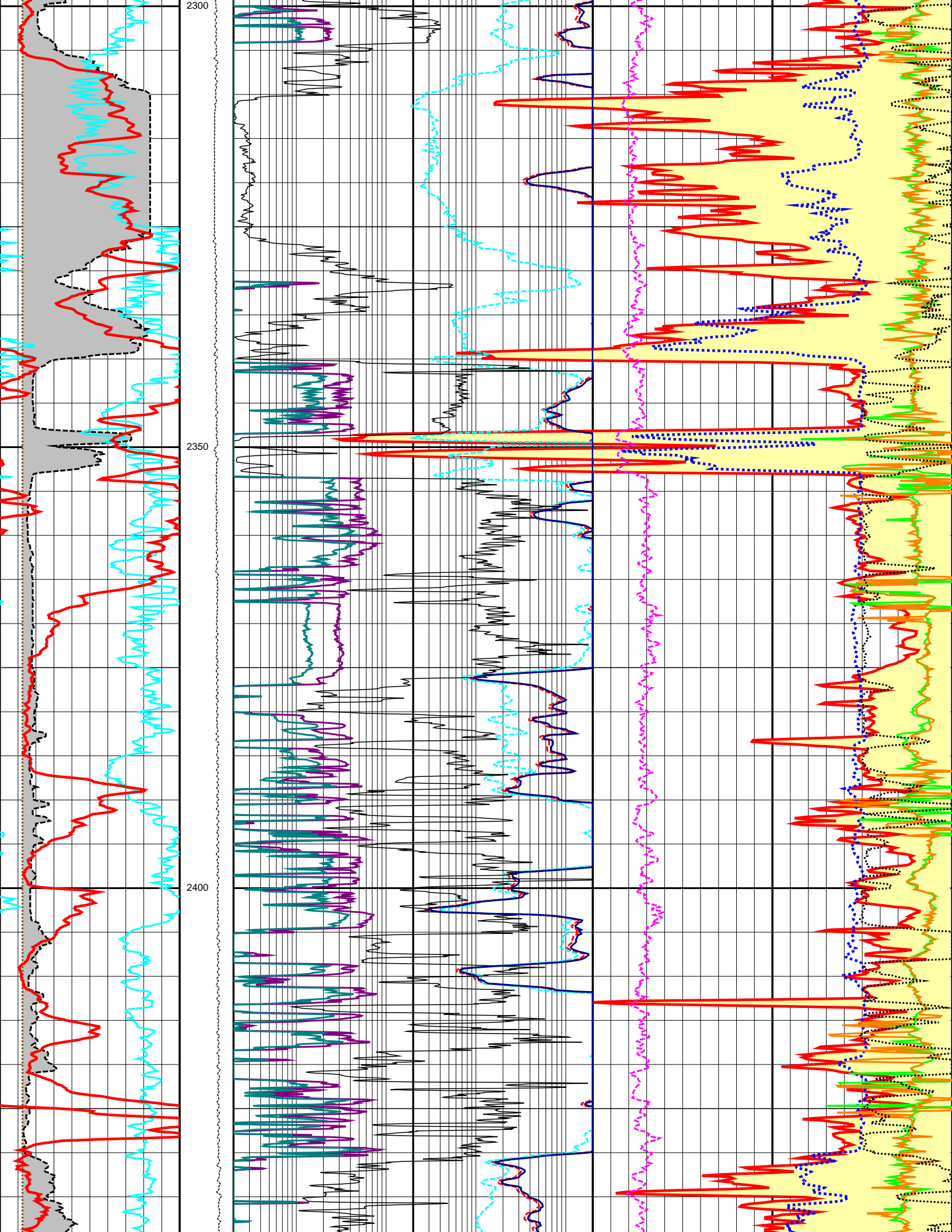


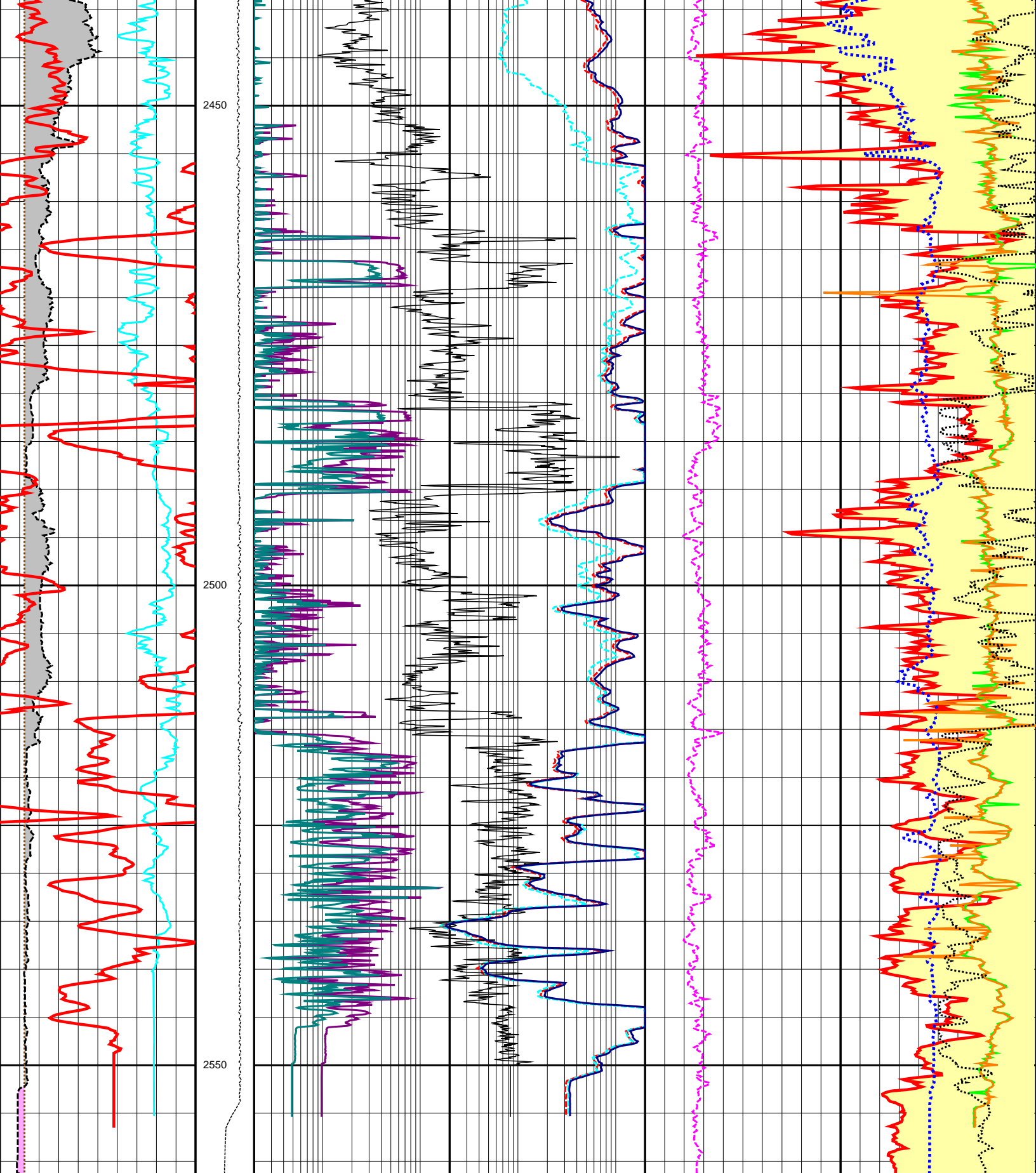












6.0	BS (INCH)	26.0	0.2	LLD (OHMM)	2000.0	1.95	RHOI (G/C3)	2.95
6.0	CALI (INCH)	26.0	0.2	LLS (OHMM)	2000.0	0.45	NPFI (V/V)	-0.15
-80.0	SP (MV)	20.0	0.2	MSFL (OHMM)	2000.0	140.0	DT (US/F)	40.0
0.0	GR (GAPI)	200.0	0.2	LLG (OHMM)	2000.0	140.0	DTL (US/F)	40.0
			0.2	SMNO (OHMM)	2000.0	0.0	PEF (B/E)	10.0
			0.2	SMIN (OHMM)	2000.0		DRHO (G/C3)	0.25

DEPTH
M
1:500

0.0 TENS (LB) 5000.0