

## **19. ANOMALY 17 (EL 2369)**

### **19.1 Introduction**

Anomaly 17 lies 40 km north of The Granites Gold Mine. Access to Anomaly 17 is via Mt. Pilotus and then northwards following a NFM exploration track.

Anomaly 17 was generated through first pass reconnaissance vacuum drilling during 1989 which highlighted a gold BCL anomaly comprising two samples within alluvial cover. These samples were on the margin of a major alluvial channel. Maximum gold BCL result was 1.76 ppb.

The principle objective of the 1992 program was to drill test the area to further define the limits of the gold anomaly.

Drilling was designed to in-fill the existing pattern (1.8km x 1km), closing down to a 1km x 0.9km grid to test the "reproducibility" of the original anomalous results.

### **19.2 Work Undertaken**

A follow up vacuum drilling programme of 21 holes for a total of 210 metres was carried out. Drilling was completed on a 1km x 0.9km AMG grid.

<b>SUMMARY OF WORK COMPLETED - ANOMALY 17</b>		
Number of Holes	21	(A17V001 - A17V021)
Total metres advanced	210	
BOH Samples	24	
BCL Samples	25	

Bulk cyanide leach (BCL) and bottom of hole (BOH) samples were collected from all holes.

The BCL sample was collected immediately below surficial transported material. BOH samples were collected in recognisable bedrock, but where this was not reached, colluvium at the bottom of hole was sampled.

BCL samples (5kg) were submitted to Rapley Wilkinson Laboratories for Au (0.01 ppb detection limit), Cu (0.01ppm detection limit) and Ag (0.01 ppb detection limit) analyses. BOH samples were submitted to Analabs for Au (method 334, 1ppb detection limit) and As (method 115, 5 ppm detection limit) analyses.

### **19.3 Results**

This program was unsuccessful in reproducing the original reconnaissance BCL anomaly. Maximum results are shown in the table below.

MAXIMUM RESULTS : ANOMALY 17		
BLEG	gold	0.85 ppb
BOH	gold arsenic	4ppb 15ppm

Geological interpretation of the area is based entirely on drill cuttings and airborne magnetics. This data indicates the area to be underlain by medium to course grained muscovite/biotite granite.

The prospect was significantly down graded when reconnaissance BCL anomalies (which constituted Anomaly 17) were reinterpreted to be hosted in alluvium.

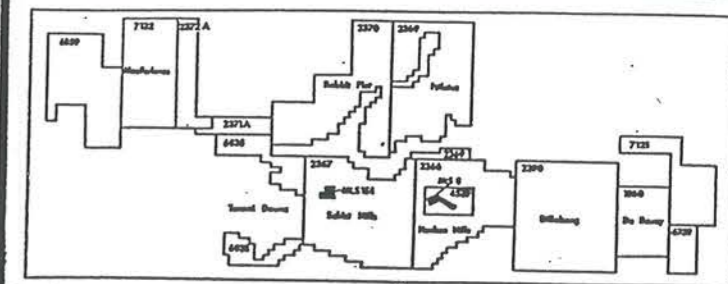
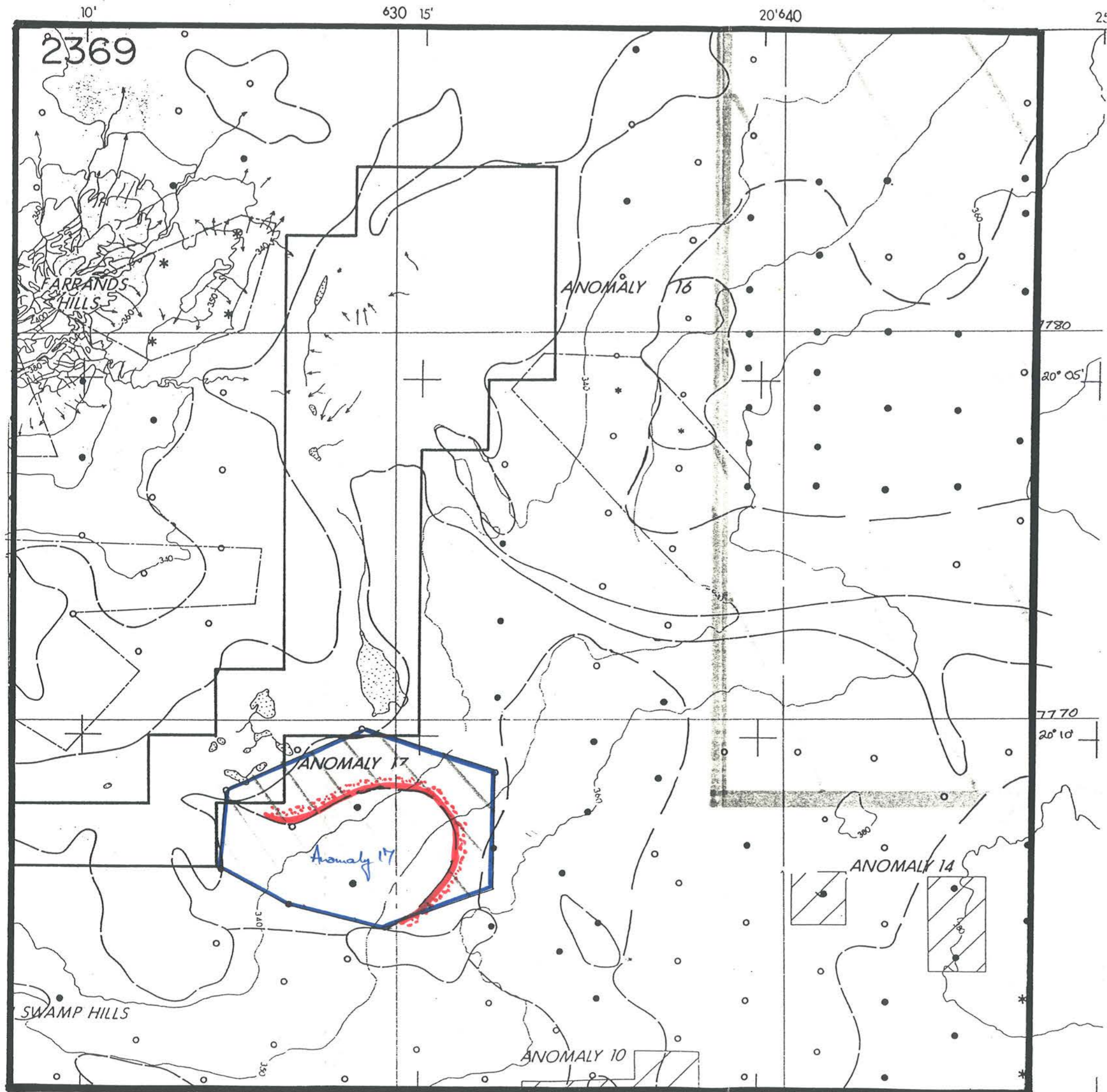
The maximum BLEG (0.85ppb) and BOH (4ppb) gold values approach minimum anomaly thresholds and occur in adjacent holes. They are not considered significant enough to follow up.

The granite bedrock in this area lies under approximately three metres of alluvium. In this terrain type, economic outcropping stockwork/vein mineralisation would produce a far greater surficial geochemical response than the one present.

#### 19.4 **Plans**

All plans relating to Anomaly 16 exploration are presented as text figures.





Alluvial cover >18m

Reconnaissance Vacuum coverage 1992

Anomaly 16

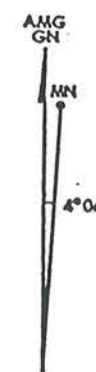
Anomaly 17

SCALE 1:100 000



NORTH FLINDERS MINES LIMITED

DATA BY	
DRAWN	
CHECKED	
APPROVED	
AMENDED	



Tanami Reconnaissance: Northern Territory

LOCATION MAP - ANOMALY 17

Fig. 19.2



