

**JANDAPA 1
4th ANNUAL REPORT
EXPLORATION LICENCE
EL25395**

Fourth Annual
For the Period 1 December 2012 to 30 November 2013
EL 25395 Jandapa
SD 5303 Arnhem Bay
Northern Territory

RTX Report No.29596

Author	G. Hartshorn
Date	December 2013
Distribution	TUC Resources Ltd RTX Perth Information Centre

This report and its contents are strictly confidential. All rights to the report and its contents, including, without limitation, rights to confidential information and copyright in all works whether at common law or statute (including photographs, diagrams, charts, maps and graphs) comprised in the report, remain the property of Rio Tinto Exploration Pty. Limited. No part of this report or the information contained in it may be disclosed to any person without the consent of Rio Tinto Exploration Pty. Limited. No part of this report, or the information contained in it, may be disclosed, reproduced (including being stored in any form), transmitted, published or used for any purpose without the prior written consent of Rio Tinto Exploration Pty. Limited. As per Regulation 126(3)(a) of the *Mineral Titles Regulations* the Minister is authorised to copy and distribute the report and associated data.

BIBLIOGRAPHIC DATA SHEET

PROJECT NAME: Jandapa
TENEMENT NUMBER/S: EL25395
TENEMENT OPERATOR: TUC Resources
TENEMENT HOLDER: TUC Resources
REPORT TYPE: Annual Report
REPORT TITLE: Fourth Annual Report For the Period 1 December 2012 to 30 November 2013 EL 25395
REPORT PERIOD: 1 December 2012 – 30 November 2013
PERSONAL AUTHOR: Greg Hartshorn
YEAR OF PUBLICATION: 2013
1:250,000 MAP SHEET: Arnhem Bay SD5303
1:100,000 MAP SHEET: Arnhem 6173
TARGET COMMODITY: Bauxite
KEYWORDS: bauxite, Annual Report, Cretaceous, laterite
DOCUMENT DETAILS: 14 pages,7 figures

CONTENTS

SUMMARY	4
1 INTRODUCTION	4
2 TENURE STATUS	5
3 LOCATION AND ACCESS	5
4 GEOLOGY	7
5 GEOMORPHOLOGY	10
6 GEOPHYSICS	11
7 PREVIOUS EXPLORATION	12
8 EXPLORATION ACTIVITIES DURING THE REPORTING PERIOD	12
9 ENVIRONMENT AND SAFETY	12
10 FUTURE WORK	13
11 REFERENCES	14
DESCRIPTOR	14
KEYWORDS	14

FIGURES

- Figure 1 *Location Map of EL 25395 showing the area recommended for partial relinquishment.*
- Figure 2 *EL25395 showing the bauxite target areas (in green) with the main target highlighted in blacked dotted line*
- Figure 3 *EL25395 showing the bauxite target areas (in green) with the main target highlighted in blacked dotted line plotted on the 1:250,000 topographic map*
- Figure 4 *EL25395 showing the bauxite target areas (in green) with the main target highlighted in blacked dotted line plotted on the SRTM digital elevation model data*
- Figure 5 *EL25395 showing the bauxite target areas (in green) with the main target highlighted in blacked dotted line plotted on the 1:250,000 geology plan*
- Figure 6 *EL25395 showing the bauxite target areas (in green) with the main target highlighted in blacked dotted line plotted on the grey scale imaged regional thorium radiometric data*
- Figure 7 *EL25395 showing the area where access was in dispute*

SUMMARY

This is the fourth annual report for EI 25395.

The Jandapa Hill Project consists of two granted Exploration Licences, EL 25395 and EL 27591, granted on 01/12/2009 and an application ELA 27592 under the name Territory Uranium Company Ltd. Territory Uranium has now been re-named TUC Resources Ltd. Rio Tinto Exploration (RTX) was the operator of this project under an Option Agreement with TUC until the date of withdrawal from the agreement which was 22 October 2013.

The approved field exploration programme is still in dispute due to unresolved access issues over the key target areas. Informal discussions held by the NLC with the regard to the disputed area did not indicate any easy resolution. Due to this impasse and a review of the prospectivity, RTX decided to withdraw from the project.

No field work was conducted during the reporting period.

Following the exit of RTX from the Option Agreement, this license was reviewed and a relinquishment of 46 out of the original 87 sub blocks completed effective as of 1 December 2013. The remaining tenement area consists of 41 sub blocks for an area of 84.03km².

RTX has compiled this annual report as part of their commitment under the Option Agreement.

1 INTRODUCTION

The Jandapa Hill Project consists of two granted Exploration Licences, EL 25395 and EL 27591, granted on 01/12/2009 under the name Territory Uranium Company Ltd, now TUC Resources. Rio Tinto Exploration had an Option Agreement with Territory Uranium to conduct exploration on the project for bauxite. RTX formerly withdrew from this Option effective of the 22 October 2013. This report covers activities on the tenement EL 25395, Jandapa 1 which were conducted by RTX during the Option period. No work other than the RTX work was completed. This report has been written by RTX to cover their obligations under the Option. The tenements are located approximately 50 km west of Nhulunbuy in north-east Arnhem Land and were consequently processed under the Aboriginal Land Rights Act 1975 (ALRA).

After the tenement was granted in December 2009, a work programme clearance meeting was held on the 18th May 2010. The approved work programme was planned to be conducted in October 2010 following all necessary final approvals by the NLC and during the dry season to aid in access and general work conditions. Due to issues with

community members and an early onset of the Northern Territory 2010 wet season, the approved work program was rescheduled for the 2011. However due to a dispute to access over the key target area, this work could not be undertaken. In 2013 the fundamental access issue with respect to the key target area remained unresolved and a review of the project by RTX led to them exiting from the Option Agreement.

2 TENURE STATUS

EL 25395 was granted on 1 December 2009 and its first relinquishment of greater than 50% (46 out of 87 sub blocks) was finalised on 1 December 2013.

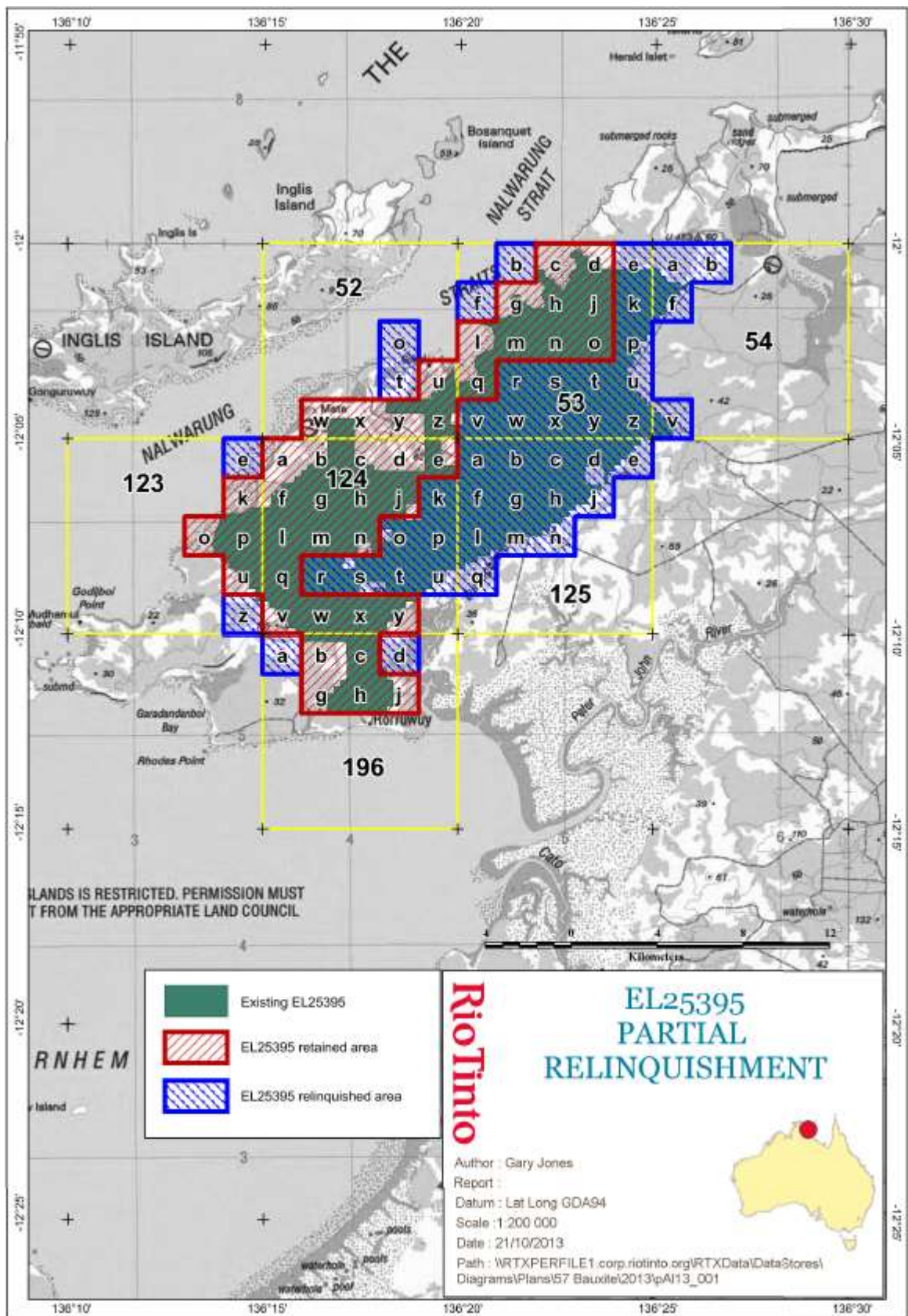
EL 25395 and EL 27591 were granted from the original application area of ELA 25395 following the consent process from the Northern Land Council. The remaining area was split out and put into moratorium under ELA 27592. The original EL 25395 tenement application covered 483 km² of which 174 km² was granted as EL 25395 and 5 km² as EL 27591.

The tenement falls wholly within Arnhem Land and is subject to the provisions of the Aboriginal Land Rights Act which is administered by the Northern Land Council.

3 LOCATION AND ACCESS

EL25395 covers 174 km² in NE Arnhem Land approximately 50km east of Nhulunbuy. The licence area lies adjacent the small community of Mata Mata. There is dry season road access to the licence area.

Figure 1 Location Map of EL 25395 showing the area recommended for partial relinquishment.



4 GEOLOGY

The primary target for the exploration programme within this license is lateritic bauxite of similar style as the nearby world class, Gove deposit. The main geological formation of interest are preserved lateritic surfaces on clay rich Cretaceous sediments.

The geology of the license area is dominated by a northeast trending ridge of Neoproterozoic hard quartz rich sandstones of the Mantugula Fm, Roper Group (see geological survey map SD5303, figure 5). The coastal areas have low elevation gently sloping plateaus which are mapped as recent cover or laterite. It is these areas (shown in green on figures below) which constitute the broad geological area prospective for bauxite. Due to access issues the main areas of interest have not been visited or mapped. The target areas are shown in the figures below. The prime target area which is located to the south of Mata Mata covers an area of approximately 18km²

Figure 2: EL25395 showing the bauxite target areas (in green) with the main target highlighted in blacked dotted line

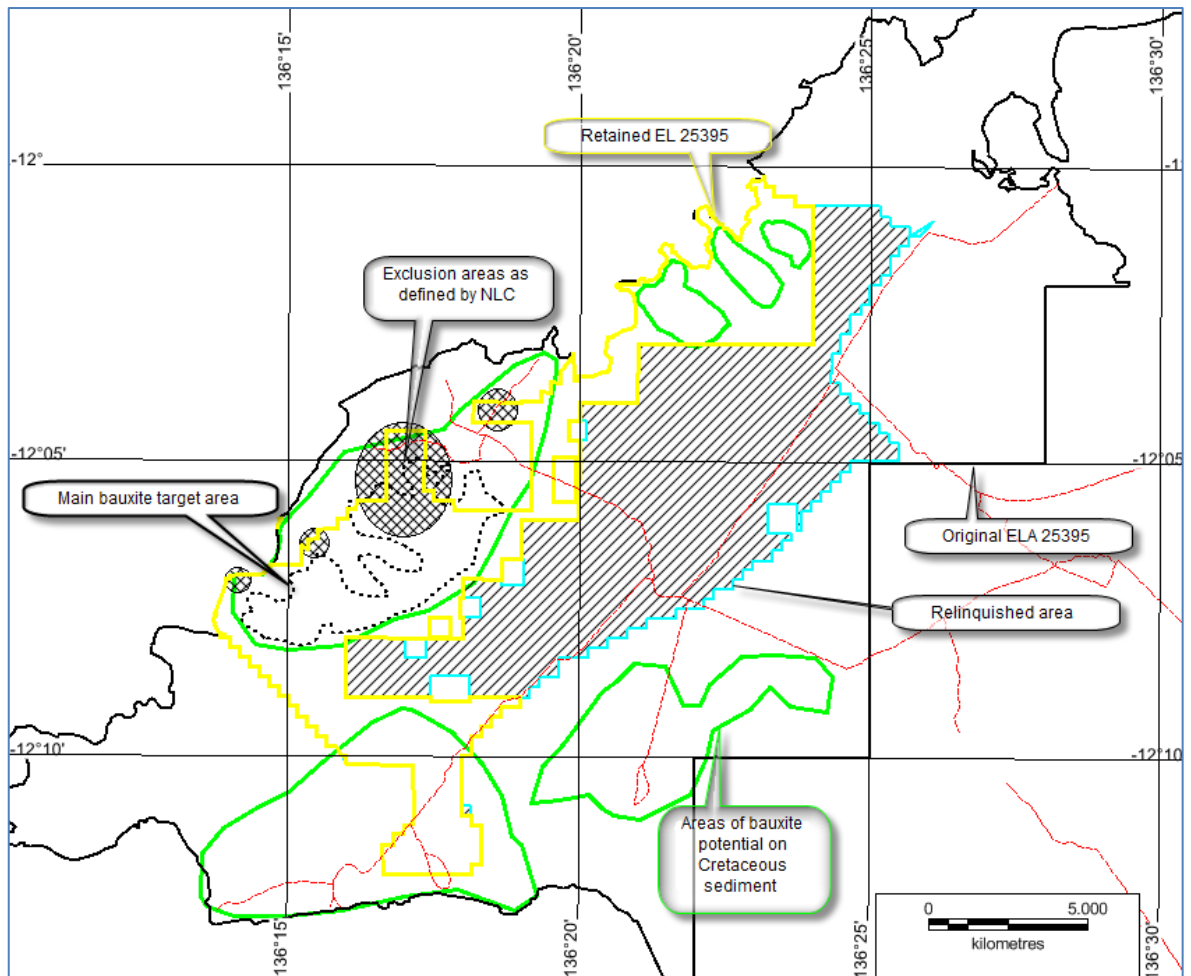


Figure 3: EL25395 showing the bauxite target areas (in green) with the main target highlighted in blacked dotted line plotted on the 1:250,000 topographic map

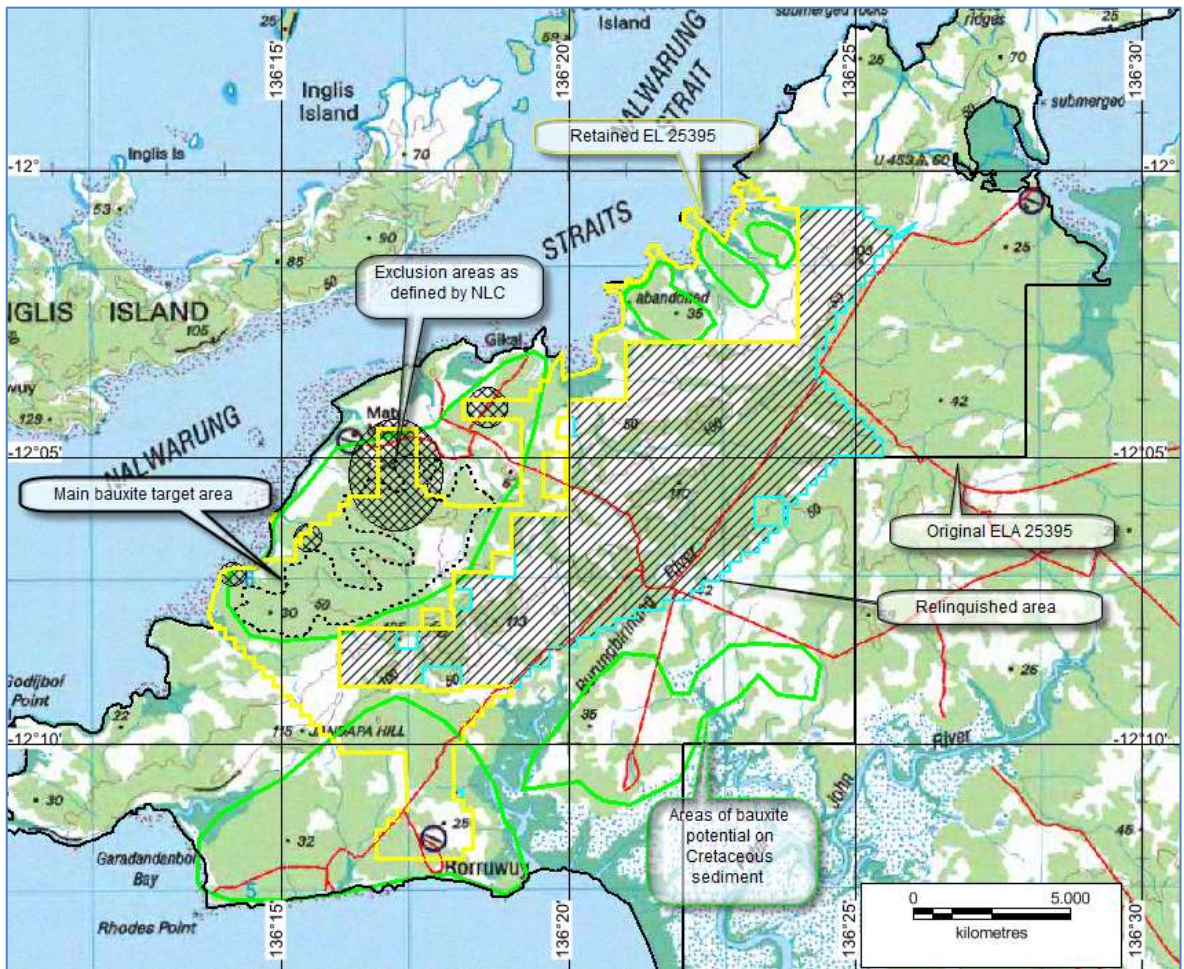


Figure 4: EL25395 showing the bauxite target areas (in green) with the main target highlighted in blacked dotted line plotted on the SRTM digital elevation model data

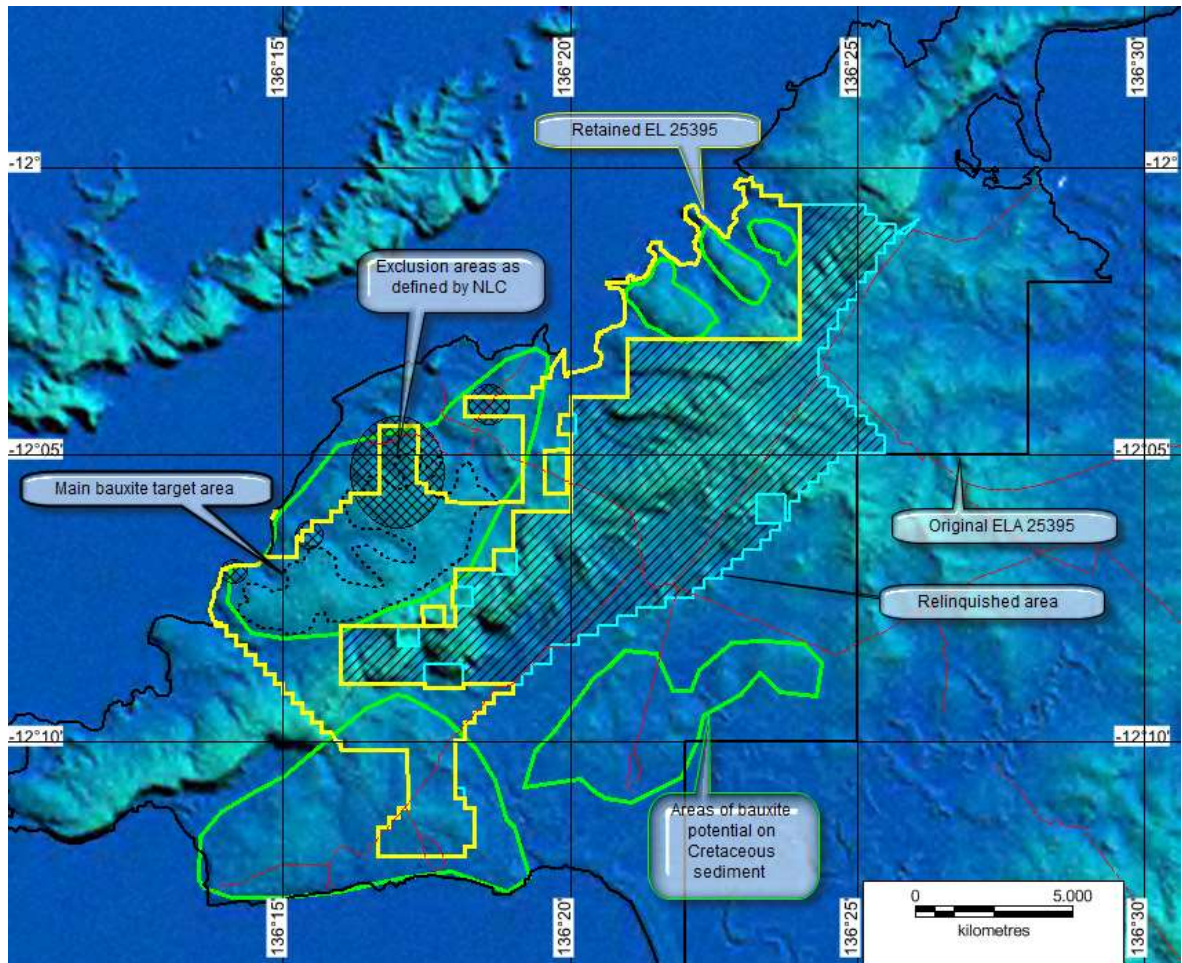
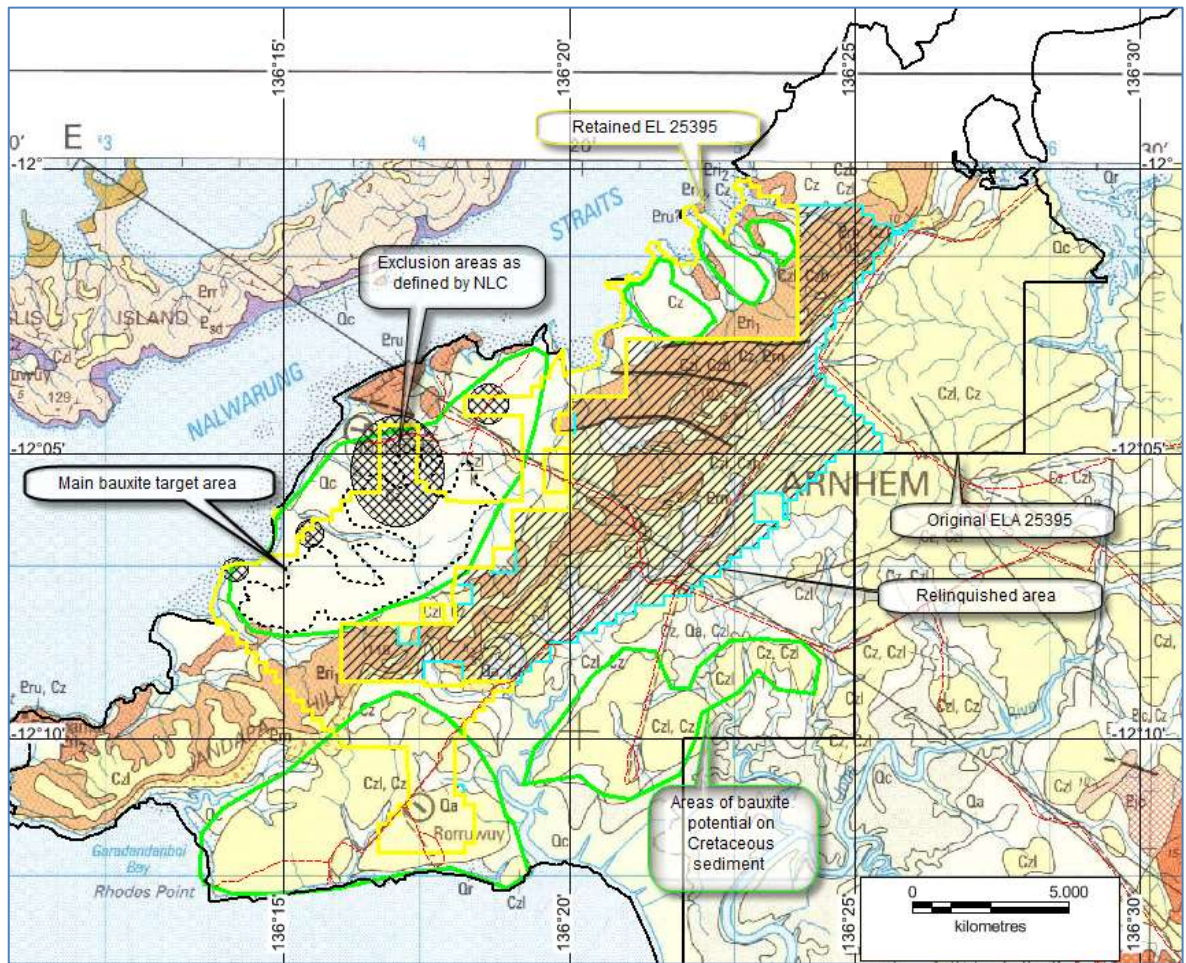


Figure 5: EL25395 showing the bauxite target areas (in green) with the main target highlighted in blacked dotted line plotted on the 1:250,000 geology plan



5 GEOMORPHOLOGY

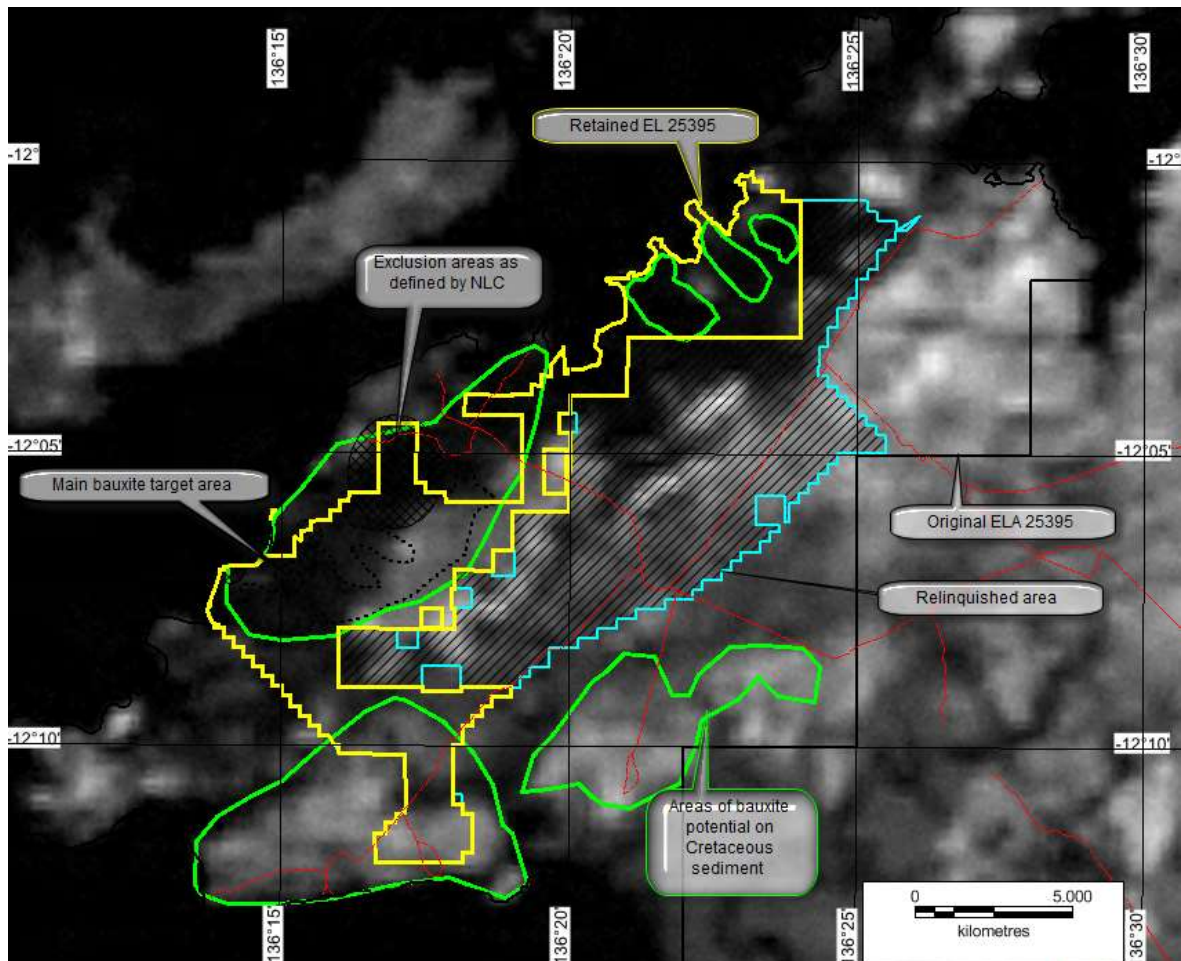
The geomorphology of EL 25395 clearly shows the northeast trending ridge of hard Proterozoic sediments (see figure 4). This ridge of older sediments mostly makes up the area recommended for relinquishment.

6 GEOPHYSICS

The project area is covered by a regional scale aeromagnetic survey flown for the NTGS in 1990-92 (Rawlings et al., 1997). The radiometric data (elevated thorium response) can be used to help distinguish the laterite-covered areas from those of both basement and Quaternary sand cover. This method does not distinguish between bauxitic and non-bauxitic laterite. The thorium radiometric response within EL 25395 is not particularly elevated.

Digital terrain data has been acquired and processed to assess areas for plateaus that may be prospective for bauxite.

Figure 6: EL25395 showing the bauxite target areas (in green) with the main target highlighted in black dotted line plotted on the grey scale imaged regional thorium radiometric data



7 PREVIOUS EXPLORATION

Previous exploration within the area of EL25395 is limited to early reconnaissance work completed by BHP for manganese and bauxite. Within the original application area, BHP had previously drilled 11 holes, of which 4 are within the granted area of EL 25395. Of these four holes drilled to an average depth of 37m, no geochemical assays are recorded. No further work has been conducted in the area since the late 1960's

Year	Company	Tenement	Exploration Completed
1960-1970	BHP Ltd	ATP1138	Manganese and Bauxite reconnaissance exploration. Eleven (11) holes completed on the original ELA 25395 area, including four (4) within the granted area of EL 25395.

8 EXPLORATION ACTIVITIES DURING THE REPORTING PERIOD

Exploration within EL 25395 was restricted to desk top review of the existing data, mostly being landforms and radiometric data. Field work on the area was to be conducted within EL 25395 however due to ongoing access issues this was never completed.

A review of the license after RTX withdrew from the Option Agreement has resulted in the relinquishment of 46 of the 87 sub blocks.

9 ENVIRONMENT AND SAFETY

No ground disturbance activities took place within the EL within the reporting period. The figure below (Figure 7) shows the area where access was disputed. This area covers most of the licence and all of the main bauxite target area. Discussions with the NLC were held in mid-2013 however there was no progress on the access dispute

Figure 7: EL25395 showing the area where access was in dispute



10 FUTURE WORK

A review of the remaining license area will be conducted now that RTX have withdrawn from the Option Agreement

11 REFERENCES

- Blake, J. 2010, Annual Report For Period Ending 30 November , 2010, EL 25395 Jandapa 1, Gove SD5304, Northern Territory. RTX Report Number 28912.
- Hartshorn, G. 2011, Annual Report For Period Ending 30 November , 2012, EL Jandapa 1, Gove SD5304, Northern Territory. RTX Report Number 29194.
- Chestnut W., Gunn, M. and McGregor, P., BHP Pty Ltd., 1968. Report on Exploration Within AP1138, Eastern Arnhem Land. Northern Territory Department of Mines and Energy, Open File Company Report CR1968-0011.
- Chestnut W., Blayden, I., Edyvean, M. & Gee, C., BHP Pty Ltd., 1966. Report on Exploration Within AP1138, Eastern Arnhem Land. Northern Territory Department of Mines and Energy Open File Report CR1966-0008.
- Ferenczi P.A., 2001, Iron Ore, Manganese and Bauxite Deposits of the Northern Territory. Northern Territory Geological Survey Report No. 13.
- Rawlings, D.J., 1997, 1:250 000 Geological Map. Explanatory Notes. Arnhem Bay Gove SD5303-04, Northern Territory Geological Survey.

LOCALITY

Arnhem Bay SD5303 1:250 000

DESCRIPTOR

Fourth Annual Report For the Period 01 December 2012 to 30 November 2013 EL 25395 Arnhem Bay SD5303, Northern Territory. Located within the Arnhem Lands Aboriginal Land Trust, Northern Territory, Australia. Bauxite exploration activities included only desk top studies. No field work was conducted due to access dispute. RTX withdrew from Option Agreement..

KEYWORDS

Bauxite, Annual Report, Final Report, Cretaceous, laterite