

# **NT Minerals Pty Ltd**

## **EL 29085 & 29086**

### **Annual and Final Report** **For the period** **6 June 2012 to 3 April 2014**

**Reporting Period:** 06/06/12 – 03/04/14  
**Author:** NT Minerals  
**Date Of Report:** 03/04/2014  
**Target Commodity:** All Minerals  
**Relevant 250K Map sheets:** Napperby, Hermannsburg,  
Alice Springs  
**Relevant 100K Map sheets:** Aileron, Anburla, Burt,  
Laughlen  
**Contact Email:** [tenements@ntminerals.com.au](mailto:tenements@ntminerals.com.au)

---

---

## **DISCLAIMER**

The information contained in this document ("Information") has been prepared by NT Minerals Pty Ltd ("NTM") from publically available sources as well as from its own exploration work. The information may be based on NTM's interpretation of data and should not be relied on by any third party without prior express written approval by NTM. The Information is being provided to the recipient ("Recipient") for informational purposes only.

The Information is not, nor does it purport to be, all inclusive, nor does it purport to contain all of the information with respect to Amadeus West Project that the Recipient may require, desire or should obtain.

The Information does not constitute a recommendation with respect to Amadeus West Project, an offer or invitation by or on behalf of NTM with respect to Amadeus West Project, or a representation by or on behalf of NTM that it will be entering into a transaction with the Recipient or with any other person. The Recipient is solely responsible for ensuring that they are lawfully entitled to receive the Information, and to distribute the Information under the laws of any jurisdiction applicable to them or any such distribution. The Information does not constitute investment, accounting, financial, legal or tax advice.

This disclaimer and legal notice applies to, and any reference in this disclaimer and legal notice to the Information includes, any update of or supplement to the Information. Each Recipient should read this disclaimer and legal notice carefully and in its entirety.

## **NO REPRESENTATIONS, WARRANTIES OR LIABILITIES**

No representation or warranty (either express or implied) is given by or on behalf of NTM (including without limitation their related bodies corporate and any employees, associates and advisors) (collectively, the "Parties") as to the quality, accuracy, reliability or completeness of the Information or any part of it or any other information supplied by or on behalf of the Parties, or that reasonable care has been taken in compiling or preparing the Information.

The Information may not be relied upon in any way by a Recipient in assuming any contractual or other obligation or liability under or in relation to the Recipient or otherwise. The Information does not and will not form any part of any agreement that may be entered into in relation to Amadeus West Project. None of the Parties nor any other person or entity assumes any obligation to provide any additional information or to update the Information or to correct or inform any person or entity of any inaccuracies which may become apparent, however, if additional information is provided (at the absolute discretion of the Parties), that additional information will be provided subject to this notice.

Any liability of the Parties to any Recipient, or to any other person or entity in relation to the Information is to the maximum extent permitted by law, expressly disclaimed and excluded.

## **NO LIABILITY FOR COSTS**

None of the Parties are liable to compensate or reimburse any Recipient for any liabilities, costs or expenses incurred in reviewing, investigating or analysing the Information or documentation otherwise in connection with Amadeus West Project.

NTM retains ownership of copyright on all of the report.

NTM also authorises the Minister to publish information in which the copyright subsists where "publish" has the meaning under Regulation 10 or 125 of the Copyright Act 1968 (Cth). This includes authorising the department to copy and distribute the report and associated data (Regulation 126(3)(a)).

---

## TABLE OF CONTENTS

1.0	ABSTRACT .....	4
2.0	LOCATION AND OVERVIEW .....	5
2.1	TENEMENT DETAILS .....	5
3.0	REGIONAL GEOLOGY .....	6
4.0	EXPLORATION HISTORY .....	6
5.0	EXPLORATION RATIONALE .....	7
6.0	OPERATIONS REPORT.....	7
7.0	CONCLUSION AND RECOMMENDATIONS .....	7
8.0	REFERENCES .....	7

### LIST OF FIGURES

Figure 1 - Burt Plains Project surrendered titles location map .....	5
Figure 2 - Burt Plain Project local geology map .....	6

### LIST OF TABLES

Table 1 - Tenement summary .....	5
----------------------------------	---

---

## 1.0 ABSTRACT

The Exploration Licenses (EL) 29085 and 29086 were the two remaining Titles of the original four amalgamated into the Burt Plain Project. The Titles EL 29085 and 29086 were surrendered on 03 April 2014. EL 29085 and EL 29086 are located north and northwest of Alice Springs respectively. Together they cover an approximate area of 1,127 km<sup>2</sup> of the Aileron Province in the Northern Territory.

From the grant date to surrender no field activities were conducted over EL 29085 or 29086.

The Burt Plains Project is located within the Paleo to Mesoproterozoic rocks of the Aileron Province within the Arunta Region of Central Australia. The main commodities targeted within the project include base metals, Ni-Cu, uranium, mafic-hosted vanadiferous magnetite, REE and orogenic gold. A detailed review of historical exploration and validation of historical exploration data has been the initial focus of exploration.

The review and assessment of the historical data found that EL 29085 and 29086 were not prospective areas for the targeted types of mineralisation. As a result these titles were surrendered and NT Minerals Pty Ltd has instead chosen to focus on more prospective projects.

## 2.0 LOCATION AND OVERVIEW

The Burt Plains Project (EL 29085 and 29086) is elongate in the northwest-southeast orientation and located 30 km north of Alice Springs. There are limited vehicle tracks within the project area apart from the Stuart Highway and the Arltunga Tourist Drive which traverse EL 29086. Numerous cleared fence lines throughout the project would provide some vehicle access.

Refer to Figure 1 below.

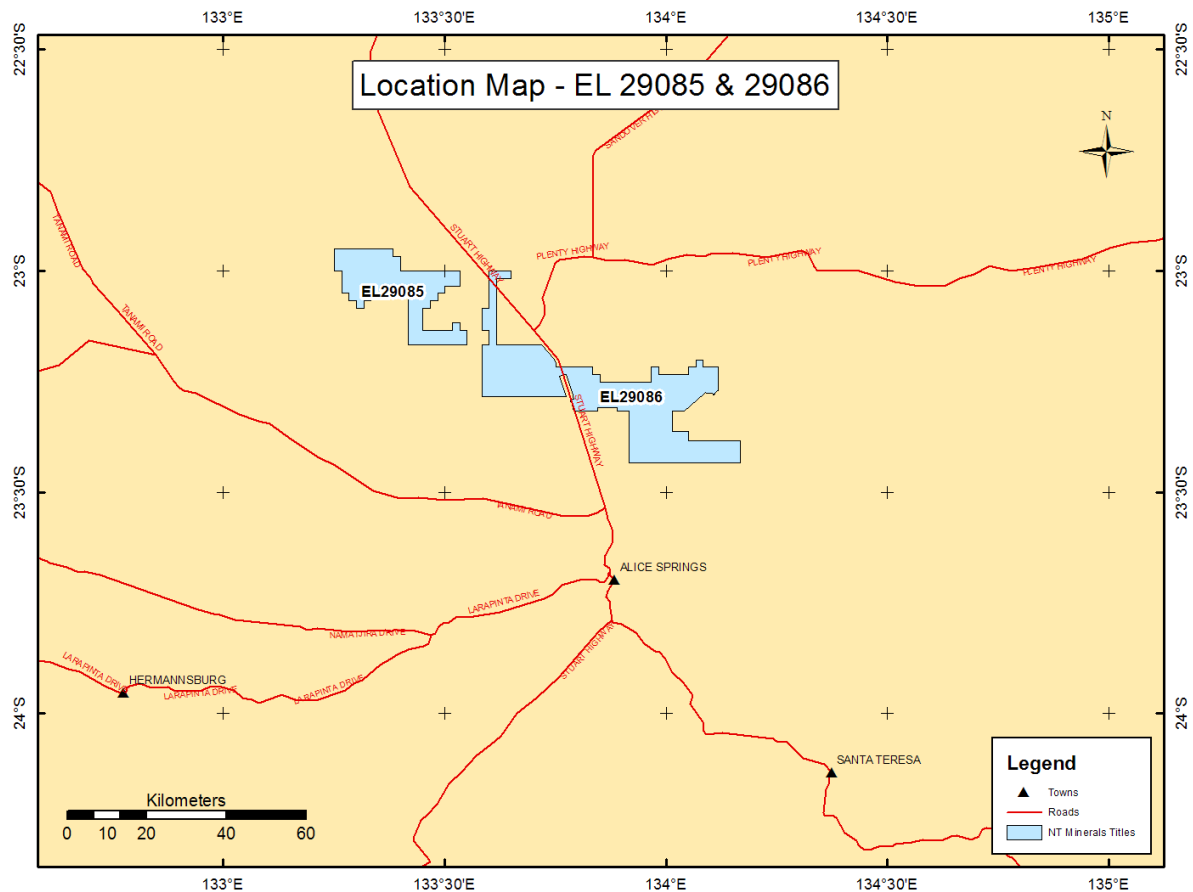


Figure 1 - Burt Plains Project surrendered titles location map

## 2.1 TENEMENT DETAILS

The Burt Plains Project was comprised of a total of four Titles and covered an area of 2,771 km<sup>2</sup>. The details of the remaining two Titles surrendered on 03 April 2014 are shown in Table 1 below.

Table 1 - Tenement summary

EL NUMBER	EL 29085	EL 29086
Date Granted	6/6/12	6/8/12
Years	6 years	6 years
Sub-Blocks	106	250
Size Km <sup>2</sup>	335	792

### 3.0 REGIONAL GEOLOGY

The Burt Plains project lies in the south eastern portion of the Palaeoproterozoic Aileron Province of the Arunta Block and slightly overlaps with the northern margin of the Neoproterozoic Amadeus Basin.

Over the northern part of project straddles the boundary between the Lander Rock Beds and the Strangways Metamorphic complex. The region has also been intruded by Palaeoproterozoic mafic intrusive complexes. Copper and gold mineralisation occurs in a north west trending belt to the north of the project and current interpretations are that this mineralisation is related with iron oxide copper gold ('IOCG') style mineralisation. While the previous exploration focus has targeted outcropping mineralisation potential there remains an opportunity to target IOCG style mineralisation under cover using the airborne magnetics data. No previously identified mineral prospects lie within the current project area.

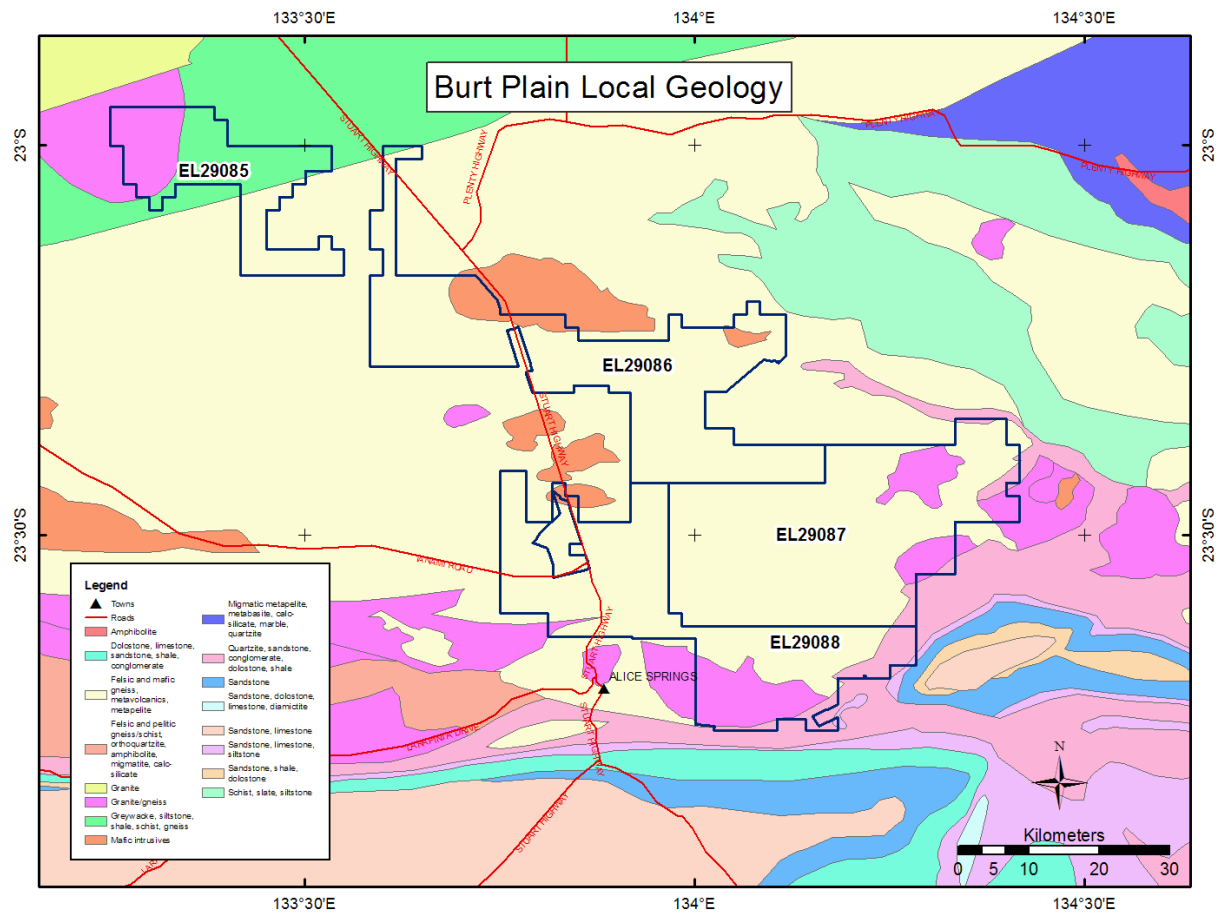


Figure 2 - Burt Plain Project local geology map

### 4.0 EXPLORATION HISTORY

There are a number of historic titles that have overlapped the area covered by EL 29085 and 29086. The exploration conducted over these tenements has been reviewed and reported on in the Year 1 Annual Report for the Burt Plain Project.

---

## 5.0 EXPLORATION RATIONALE

Several commodities were considered prospective within the region including base metals, Ni-Cu, uranium, mafic-hosted vanadiferous magnetite, REE and orogenic gold. A more detailed review of the NTGS digital exploration data base was required to specifically look at the effective sample coverage in conjunction with the regolith data as well as investigate regional data sets such as stream sediment data and look at the coverage for the various elements that have been analysed.

## 6.0 OPERATIONS REPORT

No field work has been completed on the Burt Plain Project. Work associated with this project has focused on a review of previous exploration in order to plan a forward exploration programme.

## 7.0 CONCLUSION AND RECOMMENDATIONS

The review and assessment of the historical data found that EL 29085 and 29086 were not prospective for the targeted types of mineralisation. As a result these titles were surrendered on 03 April 2014.

## 8.0 REFERENCES

Shaw, R.D. 1991. The Tectonic Development of the Amadeus Basin, central Australia

Haines, P.W., Allen, H.J., Grey, K., 2008, The Amadeus Basin in Western Australia: a forgotten corner of the Centralian Superbasin, Geological Survey of Western Australia, Annual Review 2008-09