
EL28793 SECOND AND FINAL ANNUAL REPORT

For period from 02/04/2012 to 26/03/2014
GEORGINA BASIN PROJECT NT

Mount Drummond	SE5312	1:250,000
Ranken	SE5316	1:250,000

Titleholder: Tropical Resources Pty. Ltd

Report No. 2014-016
Tropical Resources Pty. Ltd
By Mingjin HOU
27th May 2014

CONTENTS

1. SUMMARY.....	1
2. LOCATION AND ACCESS.....	1
3. TENEMENT STATUS AND OWNERSHIP.....	3
4. GEOLOGY.....	4
5. PREVIOUS EXPLORATION.....	5
6. EXPLORATION DURING YEAR 1.....	6
7. EXPLORATION DURING YEAR 2.....	6
8. EXPENDITURE.....	6
9. CONCLUSION AND RECOMMENDATION.....	6
10. REFERENCES.....	7

List of Figures

Figure 1 Location Map of EL28793	2
Figure 2 Landholders and Lease Numbers displayed inside EL 28793.....	3
Figure 3 Geological Map of EL 28793.....	4

List of Tables

Table 1 List of the previous exploration Licenses.....	5
Table 2 Expenditure on EL28793.....	6

1. SUMMARY

EL 28793 is about 100km just north of the Barkly Highway. Tropical Resources Pty Ltd applied for EL 28793 primarily to explore for Diamonds, Gold and secondly to evaluate the potential for other types of economic mineralisation such as Iron and Phosphate. Work during Year 1 of tenure consisted of a review of NTGS data and Open File Company reports (geological and geophysical).

Work during Year 2 included field reconnaissance, data evaluation and progressing to geological and geophysical survey. Concerning all of the field work and reviews, Tropical Resources Pty Ltd believe there are no potential targets or possibility to find the Gold, Diamonds or others minerals, within EL 28793 therefore the title was surrendered.

2. LOCATION AND ACCESS

EL 28793 is about 935Km of SSE137° of Darwin, and about 330km of NEE80° of Tennant Creek, about 100km of north side of the Barkly Highway (Figure 1). There is just about 100km east side of Tableland Highway (No.11). Access is along the Tableland Highway via Barkly Highway and Stuart Highway from Darwin. There are several rough road can be reach to the Lease, one just cross the area from west to east. Topography is plains with some hills but the relative elevation is less 50m, several rivers cross the land. Access is advisable in the dry season only.

The tenement has numerous creeks which can flood in heavy rains during the wet season.

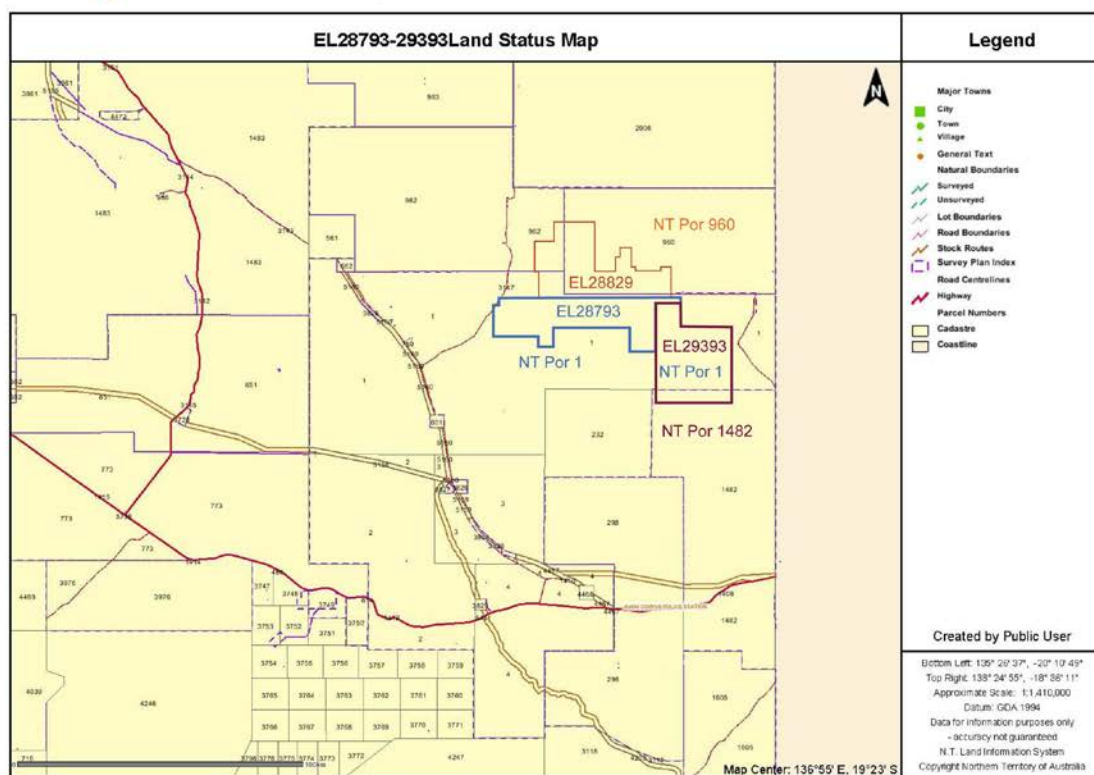
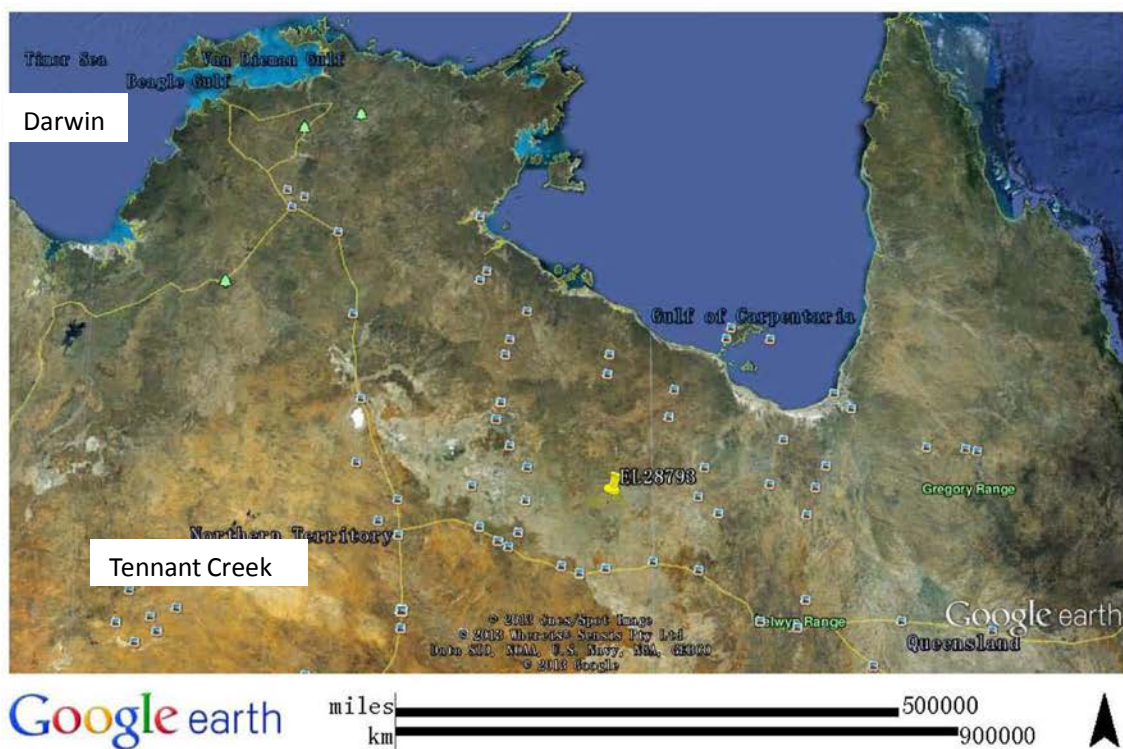


Figure 1 Location of EL28793 in Topography

3. TENEMENT STATUS AND OWNERSHIP

EL 28793 was granted on 2nd April 2012 and expires on 1st April 2018 for a term of six years. It comprises 250 graticular blocks (810.58 sq km). There are no other mining leases or mineral claims shown within the Licence boundaries.

Underlying cadastre is mainly Pastoral Lease. Landholders show below: 1-NT Portion 1, Perpetual Pastoral Lease 913, Nicholson) (Figure 2).

The expenditure covenant set for the second year was \$74,000.

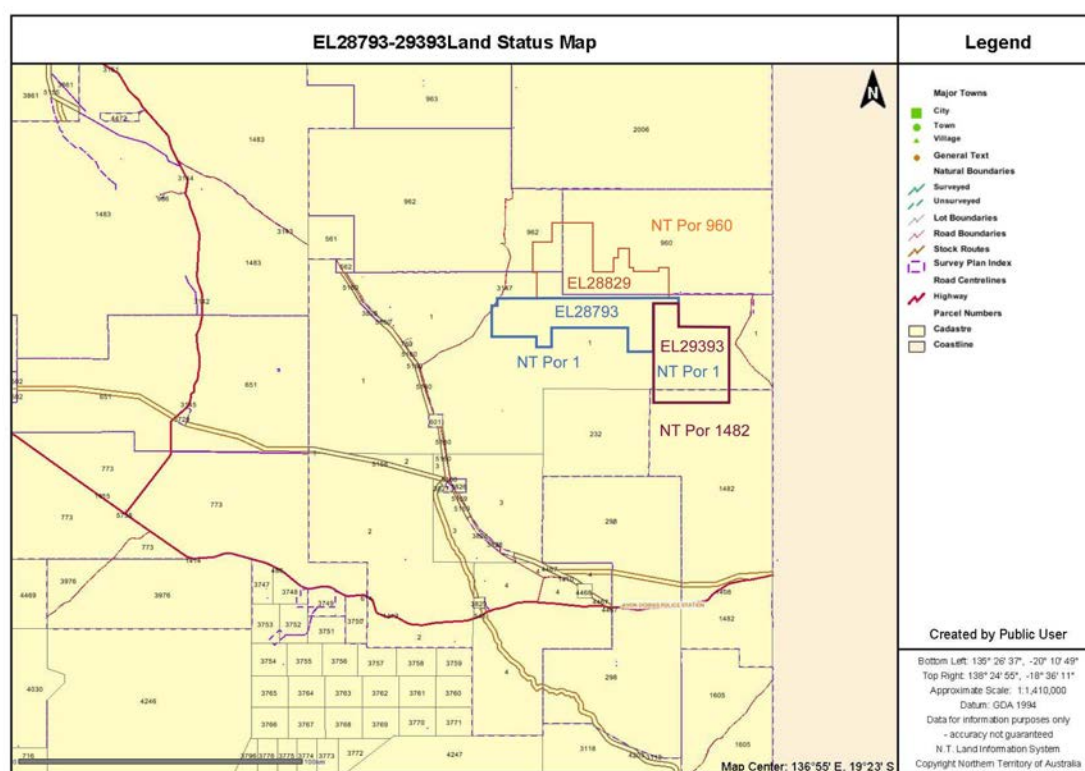


Figure 2 Landholders and Lease Numbers displayed inside EL 28793

4. GEOLOGY

EL28793 is situated within the Georgina Basin, a wildly folded sequence of Cambrian rocks, nearly horizontal. The 1:250,000 Geological maps cover the tenement area (Mt. Drummond, 2006 and Ranken, 2005) (Figure 3).

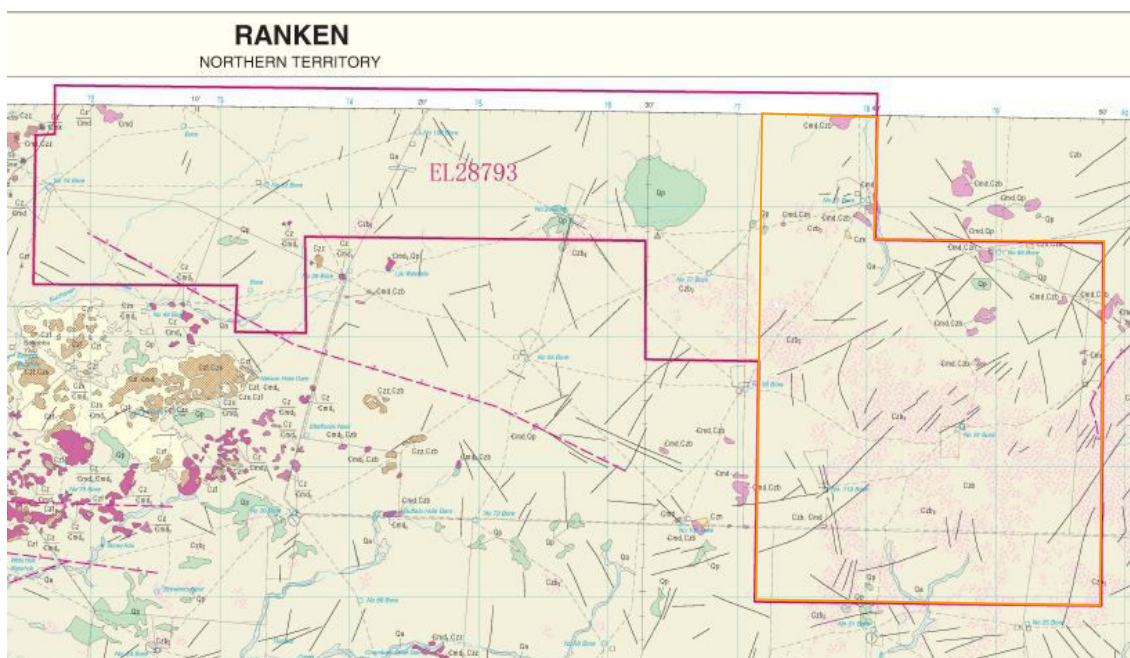


Figure 3 Geological Map of EL 28793 from 1:250000 geologic maps of Mount Drummond and Ranken

All of the economic diamond deposits and other significantly diamondiferous occurrences in Australia occur on the North Australian Craton (“NAC”). The NAC underlies the Kimberley region of northern WA, the northern two thirds of the NT and the north western part of Queensland. It is also host to many significant base metal, gold and uranium deposits. The NAC was formed at about 1850Ma during the Barramundi Orogeny by the amalgamation of Archaean and early Proterozoic rocks which now form the basement rocks to the younger sequence. Proterozoic (1820-1600Ma) platform cover sediments, Palaeozoic volcanics and sediments, and Mesozoic sediments cover these basement rocks.

The Georgina Basin is one such platform cover which developed above the NAC between 1800-1500Ma. Its sedimentary package consists of unmetamorphosed and less intensely deformed rocks of carbonate, siliciclastic and interbedded volcanics deposited in a shallow intracratonic basin.

The Georgina Basin is overlain by the remnants of the Cambrian Barkly Group Camooweal Dolomite, Ranken Formation Limestone. There is a widespread distribution of Cenozoic Limestone, dolomite; and sandy soil, laterite and alluvium cover.

5. PREVIOUS EXPLORATION

Exploration has been carried out in the area since 1977, with several companies working on this area (Some of them show in Table 1). Exploration primarily involved rock chip, soil and stream sampling for Diamond, gold and some base metal analysis.

Table 1 List of the previous exploration Licenses

EL Number	Expiry Date	Company Reports
EL1082	5/05/1977	CR1977-0040
EL4373	8/12/1989	CR1985-0246 CR1985-0026 CR1988-0224
EL4374		CR1989-0288 CR1989-0289 CR1985-0027 CR1986-0013 CR1989-0160
EL4530	24/01/1991	CR1986-0111
EL4531	15/01/1991	CR1986-0113
EL4533	15/01/1991	CR1986-0115
EL6571	30/01/1996	CR1996-0149 CR1993-0336 CR1993-0337 CR1991-0179 CR1991-0180 CR1992-0156 CR1992-0264 CR1995-0323 CR1995-0316 CR1994-0452 CR1994-0319
EL6575	30/01/1996	CR1990-0605
EL6576	30/01/1996	CR1990-0605
EL6577	30/01/1996	CR1995-0323 CR1994-0319 CR1993-0262 CR1991-0168 CR1992-0164 CR1992-0370 CR1995-0316 CR1994-0452 CR1993-0337
EL8102	27/05/1999	CR1994-0433 CR1995-0446 CR1996-0493 CR1995-0618 CR1997-0578 CR1996-0642 CR1998-0310 CR1997-0438

6. EXPLORATION DURING YEAR 1

In 2012, Tropical Resources exploration consisted of historic data compilation including tenure, datasets, open file reports and geo-referencing of relevant maps. This enabled an informed review of the tenements prospectively in regards to Diamond and Gold, Iron and Phosphate. Field reconnaissance was also completed.

7. EXPLORATION DURING YEAR 2

Working program for Year 2 included:

- a) Short field reconnaissance
- b) Reviews
- c) Ground Geological survey

8. EXPENDITURE

Expenditure consisted of:

Table 2 Expenditure on EL28793

works \ year	1	2
Ground Geological survey	\$2,000.00	\$14,000.00
Office studies	\$44,000.00	\$46,000.00
Overheads	\$4,000.00	\$14,000.00
TOTAL	\$124,000.00	

9. CONCLUSION AND RECOMMENDATION

The exploration target was Diamonds and Gold, Base metal, Iron, and Phosphate. Following a review of all the data collected, we think there are no potential targets or possibility to find the Gold, Diamonds or others minerals, so the title has been surrendered.

10. REFERENCES

Rawlings DJ, Sweet IP and Kruse PD, 2006. Mount Drummond, Northern Territory (Second Edition). 1:250,000 Geological map series, SE53-12. Northern Territory Geological Survey, Darwin.

Kruse PD, Radke BM and Duffett ML., 2005. Ranken, Northern Territory (Second Edition). 1:250,000 Geological map series, SE53-16. Northern Territory Geological Survey, Darwin and Alice Springs.

Copyright

This document and its content are the copyright of Tropical Resources Pty Ltd. The document has been written by Tropical Resources Pty Ltd for submission to the Northern Territory Department of Mines and Energy as part of the tenement reporting requirements the Mineral Titles Act 2010.

Any information included in the report that originates from historical reports or other sources is listed in the “References” section at the end of the document.

Tropical Resources Pty Ltd authorise the Department to copy and distribute the report and associated data.