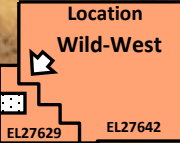


Utopia WILD-WEST (Area 9) - Ionic Soil Sample Grid Gold & metals response ratios plotted



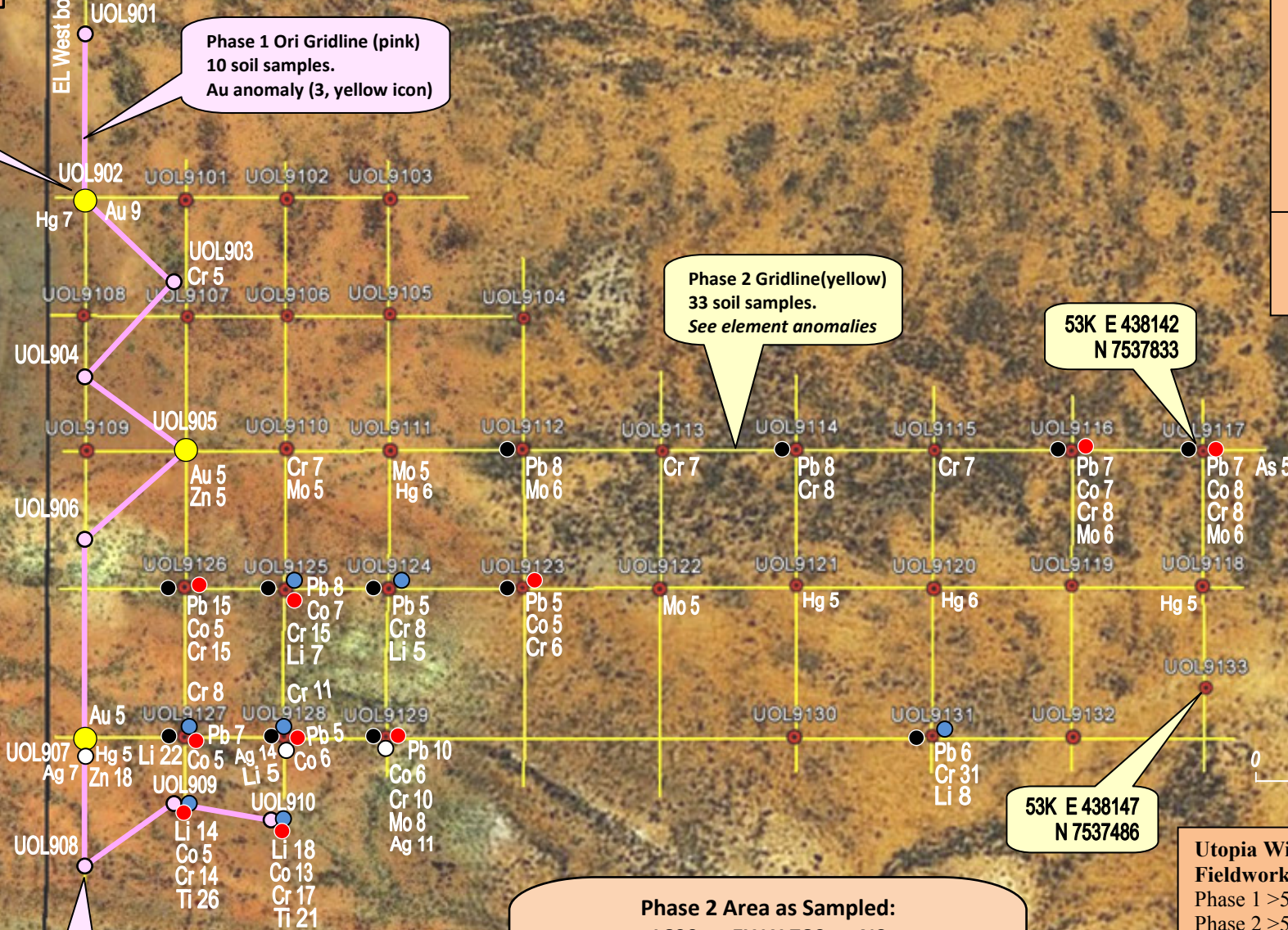
Legend

Response Ratios Tabled

- Ionic soil sample
- Gold (3 off, Phase 1 Ori.)
- Silver (3)
- Hg & Mo (6ea, no symbol)
- Lithium (7)
- Lead (12)
- Cobalt (10)
- Chrome (15 no symbol)
- Zinc (2 no symbol)

Elements shown on Map grid indicate Phase 2 samples >5 RR, including Phase 1 & 2 Au.

Figure 7



Phase 2 Area as Sampled:
1600mt EW X 780mt NS

Phase 1: UOL9XX Gold + >Elements tabled
Phase 2: UOL91XX Gold + >Elements tabled

Element values tabled are response ratios (RR) above background. Only selected elements tabled

Utopia Wild-West EL27629
Fieldwork Mapsheet
Phase 1 >5 Au RR Ionic Soil Samples
Phase 2 >5 Au RR Ionic Soil Samples
Phase 2: 33 Samples 150 x 200mt grid
Revised GB. June 2013

Map: Utopia Ph-2 Wild-West – Sat View

*Oneva Exploration Pty Ltd
Alice Springs NT*