



11 Dennison Drive
Ocean Reef, WA 6027
Phone 618 9300 6689
Fax 618 9300 4429

Email: pfinder@bigpond.net.au
Web: www.pathfinderexploration.com.au

PETROGRAPHIC AND MINERAGRAPHIC DESCRIPTIONS

BRIEF PETROGRAPHIC DESCRIPTIONS

SAMPLE NO: Sample TK 651567

TYPE: Rock Chip

LOCATION:

FIELD IDENTIFICATION: Silicified quartz sericite schist representing a possible felsic tuff.

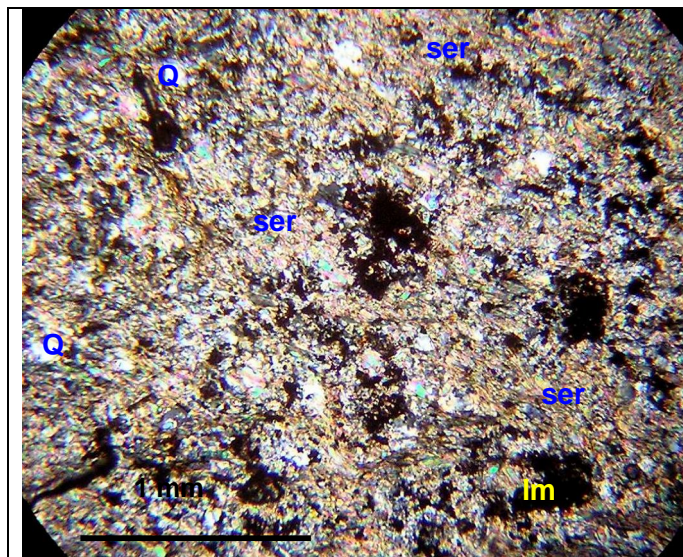
SECTION TYPE: Thin Section

DESCRIPTION: Fine, angular quartz clasts (2 vol%) are dispersed through a foliated matrix comprising oriented fibrous sericite/muscovite. Sericite/muscovite parallels a weakly anastomosing schistosity. Fine, granular limonite aggregates have penetrated the matrix.

Comments: The presence of fine angular quartz clasts suggest a felsic tuffaceous precursor that has been pervasively altered - sericitised and subsequently metamorphosed.

PIMA Analysis: Muscovite/illite.

CLASSIFICATION: *Quartz sericite schist representing a low grade greenschist facies metamorphosed felsic tuff that has been possibly hydrothermally altered (sericite).*



Sample TK 651567

Oriented fibrous sericite/muscovite dominates and parallels a penetrative schistosity. Relict quartz (Q) clasts occur in the foliated matrix. Crossed polars. Field of view – 3 mm.
