

This report accompanies a QuickBird VHR satellite image purchased on behalf of Mr Graham Bubner of Western Desert Resources over the Pine creek Area in the Northern Territory.

The Quickbird imagery was collected on the 8<sup>th</sup> June 2007 and was purchased as ortho ready standard. The client supplied ground control information in a tab file of what appears to be Tenements and land boundaries over the image however these features were not visible on the imagery. A vector of the railroad was supplied and this has been used to fine tune the orthorectification of the data using the SRTM dem for height control.

The imagery was collected at 13deg off nadir.

Files supplied on this DVD include

RAW DATA – data as supplied by DigitalGlobe in tiff format

Orthorectified DATA – ER Mapper format 4 band 0.6m resolution 16bit orthorectified image.

Final\_ecw\_files – ECW format stretched imagery together with TAB headers for display of the data in MapInfo or ARCVIEW. Two files were prepared a natural colour image using the visible bands, and an enhanced colour image which incorporates some of the near Infrared in the green giving a more pleasing green vegetation.

An ECW file of the SRTM DEM was also prepared.

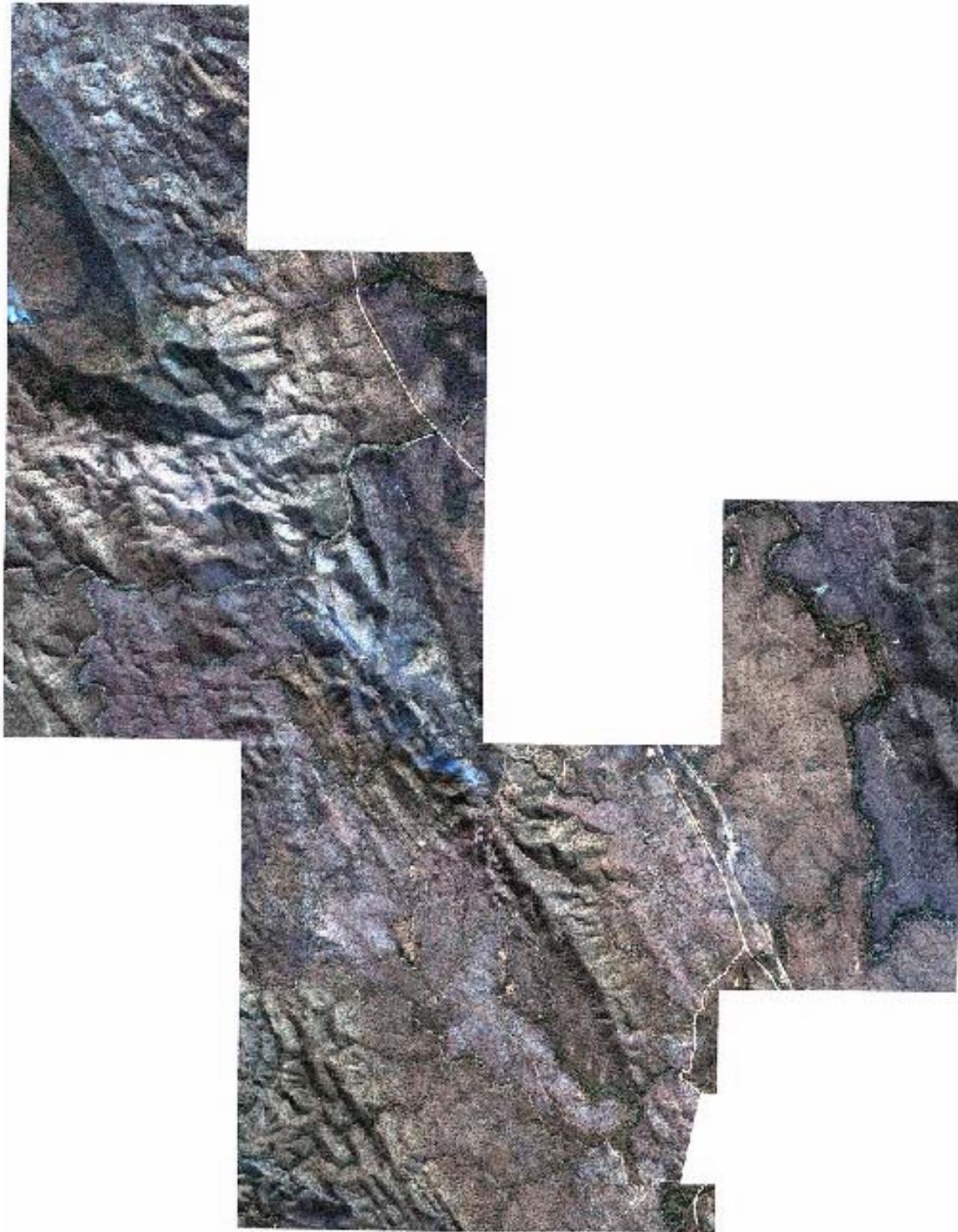
REPORT – graphics used in this readme.

R.Walker  
Dec 9, 2007

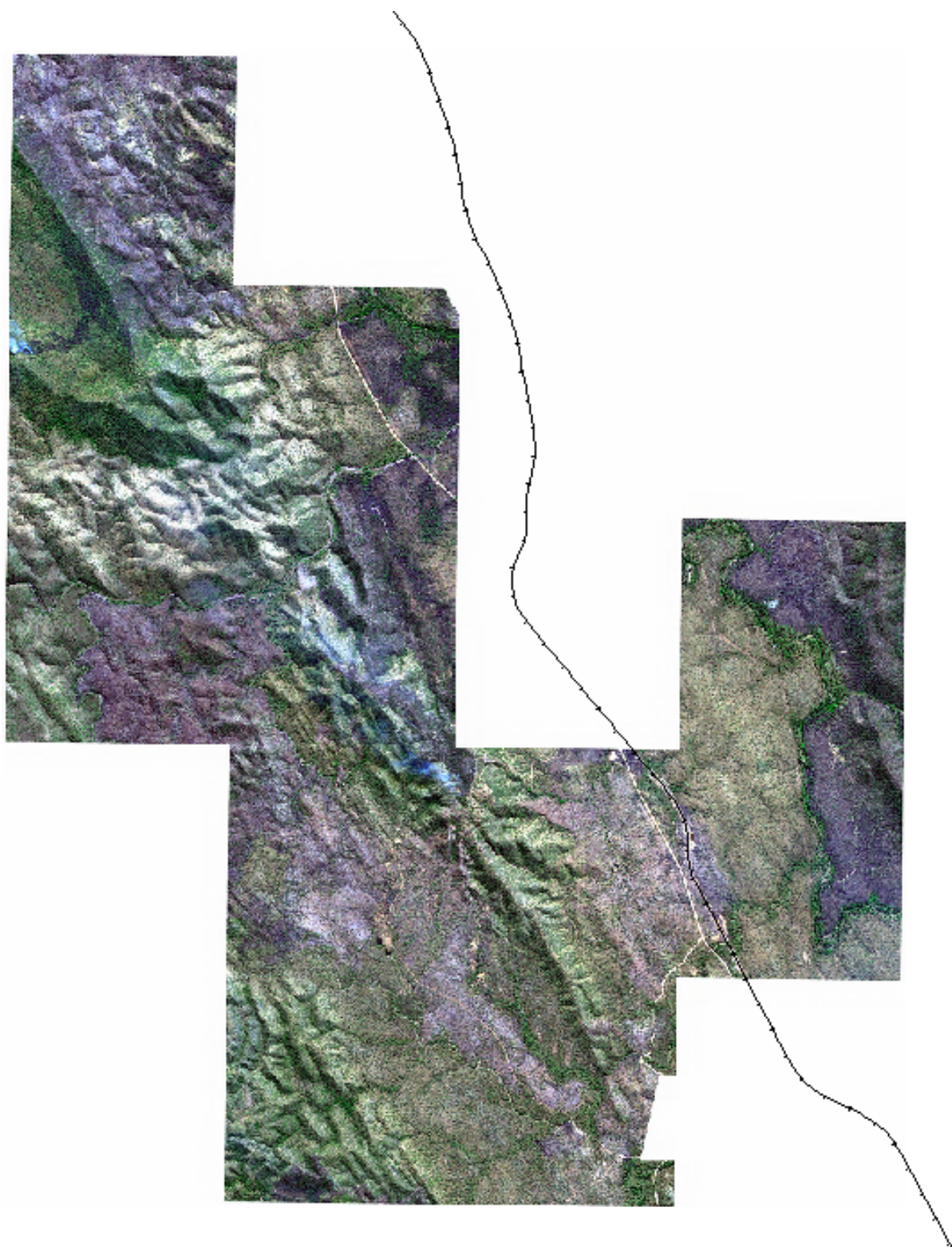
## **GEOIMAGE PTY LTD**

**[www.geoimage.com.au](http://www.geoimage.com.au)**

<b>Brisbane Office</b>	<b>Sydney Office</b>	<b>Perth Office</b>
PO Box 789, Indooroopilly Qld 4068	P.O BOX 208,	PO Box 8013 Subiaco East WA 6008
13/180 Moggill Road	Crows Nest,	27A Townshend Rd
Taringa Qld 4068	New South Wales 1585	Subiaco WA 6008
<b>Tel:</b> 07-3871 0088	<b>Tel:</b> 02 9460 0929	<b>Tel:</b> 08-9381 7099
<b>Fax:</b> 07-3871 0042	<b>Fax:</b> 02 9460 0929	<b>Fax:</b> 08-9381 7399
<b>Email:</b> <a href="mailto:geoimage@geoimage.com.au">geoimage@geoimage.com.au</a>	<b>Email:</b> <a href="mailto:keiko@geoimage.com.au">keiko@geoimage.com.au</a>	<b>Email:</b> <a href="mailto:perth@geoimage.com.au">perth@geoimage.com.au</a>



Natural Colour ECW file



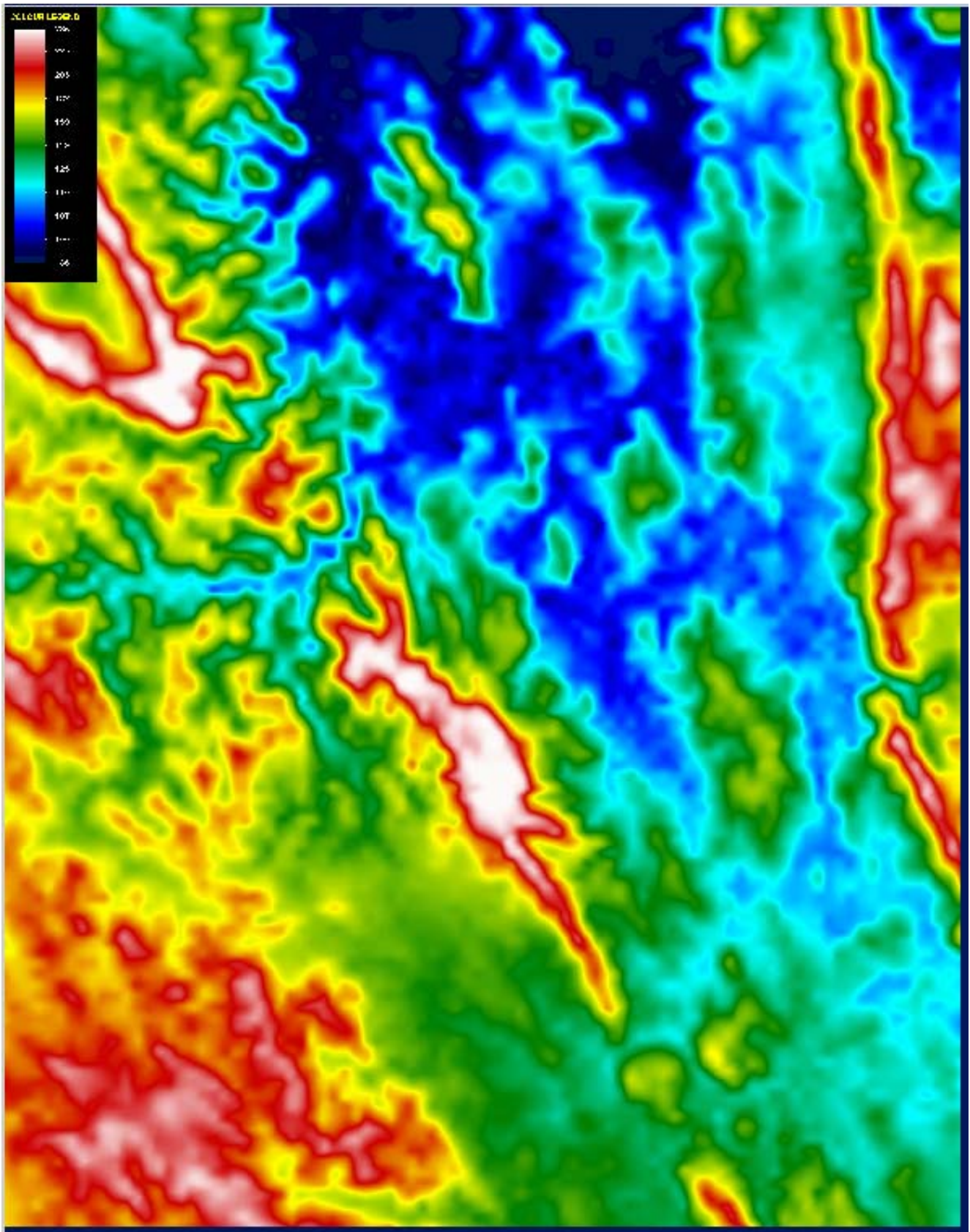
Enhanced natural colour image





Enhanced natural colour image with the railroad track in red.





SRTM DEM used to orthorectify the imagery.