

EL 26962 Part of the Wingates East Group

**ANNUAL TECHNICAL REPORT
For the 12 month period ending 30th May, 2010**

**Wingate Mountains
NORTHERN TERRITORY**

Title holder	Corporate Developments Pty Ltd
Operator (if different from above)	Outback Metals Ltd
Tenement Manager/Agent	Teneman Consulting
Titles/Tenement	EL 26962
Mine/Project Name	Wingate
Report Title including type of report and reporting period including date	Annual Technical report for EL 26962 – Period ending 14/5/2010
Corporate Authors	Outback Metals Ltd
Company Reference No:	EL 26962
Target Commodity or Commodities	Cu, Au, PGM, U
Date of Report	7 th February, 2011
Datum/Zone	GDA94/Zone 52
250 000K mapsheet	Port Keats
100 000K mapsheet	Wingate Mountains
Postal Address	33 Lascelles Ave, Hove, SA, 5048
Phone	08 8298 1045
Email:	tapearce@bigpond.net.au
	rbradey@outbackmetals.com

EXECUTIVE SUMMARY

This report summarises all work conducted in EL 26962 for the period ended 14th May, 2010.

The tenement area lies in the western parts of the Pine Creek Inlier (Litchfield Province) and is considered to have good potential for magmatic Cu-Ni mineralisation related to the Wangi Basics. The Litchfield Province is the continuation of the prospective Halls Creek Province of the Kimberleys, a known significant magmatic Cu-Ni province.

Work conducted includes:

- Analysis of GA AEM coverage
- Brief geological observations from helicopter while enroute from Daly River Hotel to ELs 10140 and 35713
- Preliminary geological and geophysical studies.

INTRODUCTION

EL 26962 of 2 sub-blocks (6.66 sq km) was first granted to Corporate Developments Pty Ltd on 15th May 2009. Corporate Developments entered into an agreement with Outback Metals Limited (OUM) for the outright sale of the EL preparatory to the ASX listing of OUM.

The EL is located about 200km SSW of Darwin in very rugged and dissected country immediately north of the Wingate Mountains on MOYLE and WINGATE MOUNTAINS 1:100 000 scale map sheets. (Fig 1).

Previous exploration was carried out by:

- Planet Gold during 1969-1970 for uranium, gold and base metals
- Carpentaria Exploration Company during 1985-1991 for gold and base metals
- Tipperary Mining with Mobil Energy Minerals during 1992-1995 for uranium and base metals
- Corporate Developments in the mid to late 1990's for gold and base metals

There are several mineral occurrences within the EL as listed in the NTGS MODAT database.

The mineral commodities considered were gold, base metals and uranium.

GEOLOGY

In 1987 NTGS carried out field geological mapping and airphoto mapping of MOYLE and WINGATE MOUNTAINS 1:100 000 scale geological map sheets (Edgoose et al, 1989). The published maps (Fig 2) show that much the EL is located in the shattered ridge country which comprises the Giants Reef Fault Zone. The geological details have been described in previous annual reports.

WORK COMPLETED SINCE MAY 2009

This single sub-block appends to the NE boundary of EL 10140 and the reporting period is from 15th May 2009 to 14th May 2010.

The work carried out included:

- Analysis of GA AEM coverage
- Brief geological observations from helicopter while enroute from Daly River Hotel to ELs 10140 and 35713
- Preliminary geological and geophysical studies

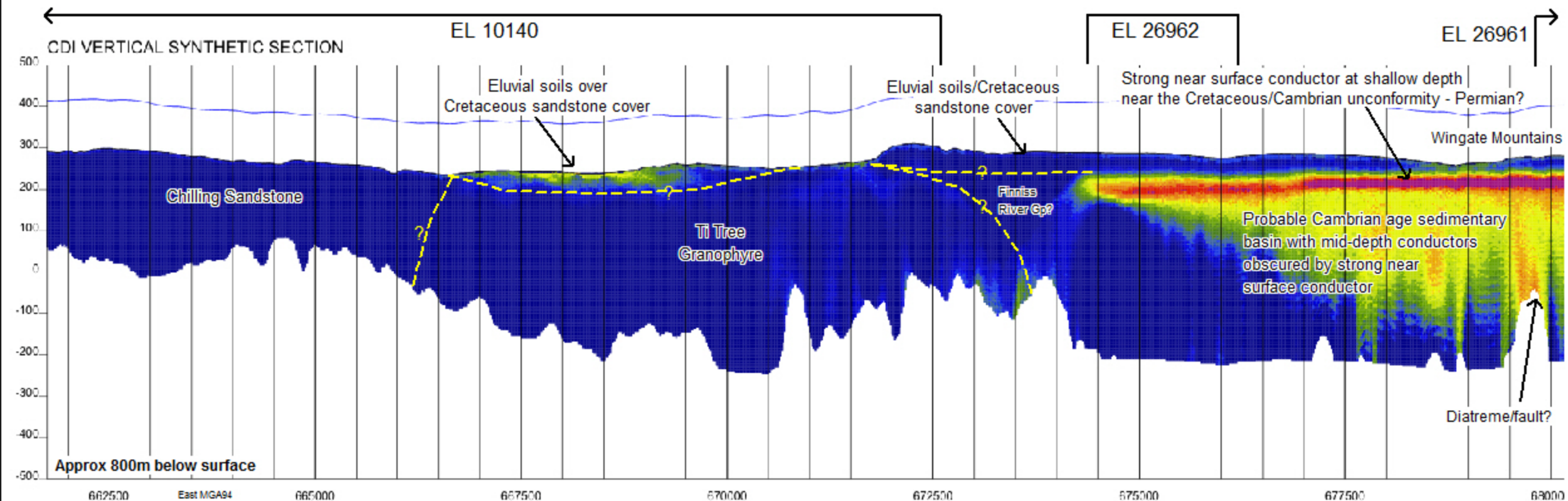
CONCLUSIONS AND RECOMMENDATIONS

Sample and geophysical data supported by favourable geological setting continue to present a reasonable level of prospectively for this tenement. Future work plans for this tenement will be determined for the 2011 field season.

REFERENCES

Edgoose CJ, Fahey GM and Fahey JE, 1989: Moyle 4969, 1:100 000 Geological Map Series, Explanatory Notes. NT Department of Mines And Energy, Darwin.

Edgoose CJ, Fahey GM and Fahey JE, 1989: Wingate Mountains 5069, 1:100 000 Geological Map Series, Explanatory Notes. NT Department of Mines And Energy, Darwin.



ELs 10140, 26961 AND 26962
WINGATE
CDI SYNTHETIC SECTION
PORTION OF GA AEM FLIGHT LINE
F80 1204802
Section A

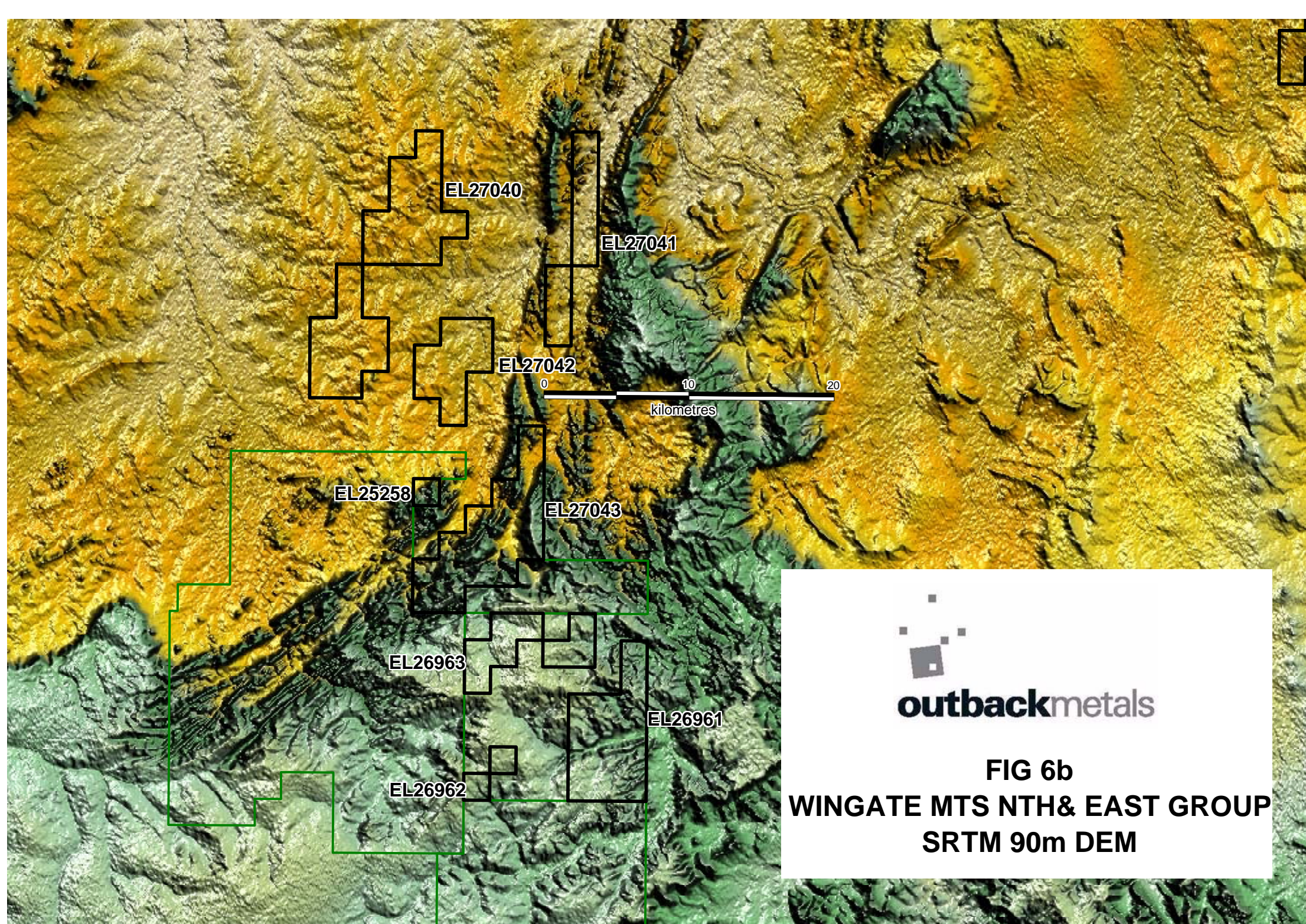


FIG 6b
WINGATE MTS NTH& EAST GROUP
SRTM 90m DEM

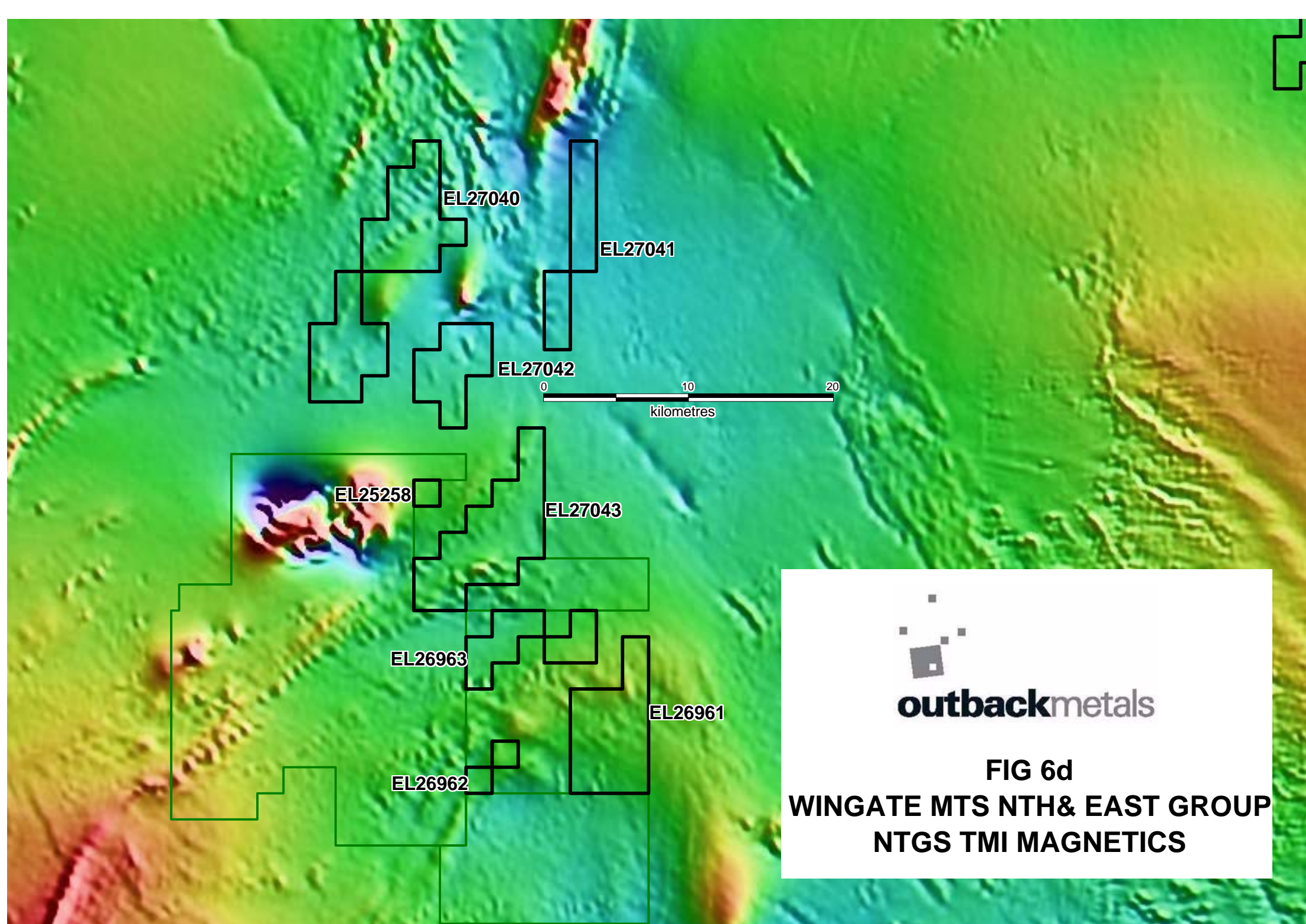


FIG 6d
WINGATE MTS NTH& EAST GROUP
NTGS TMI MAGNETICS

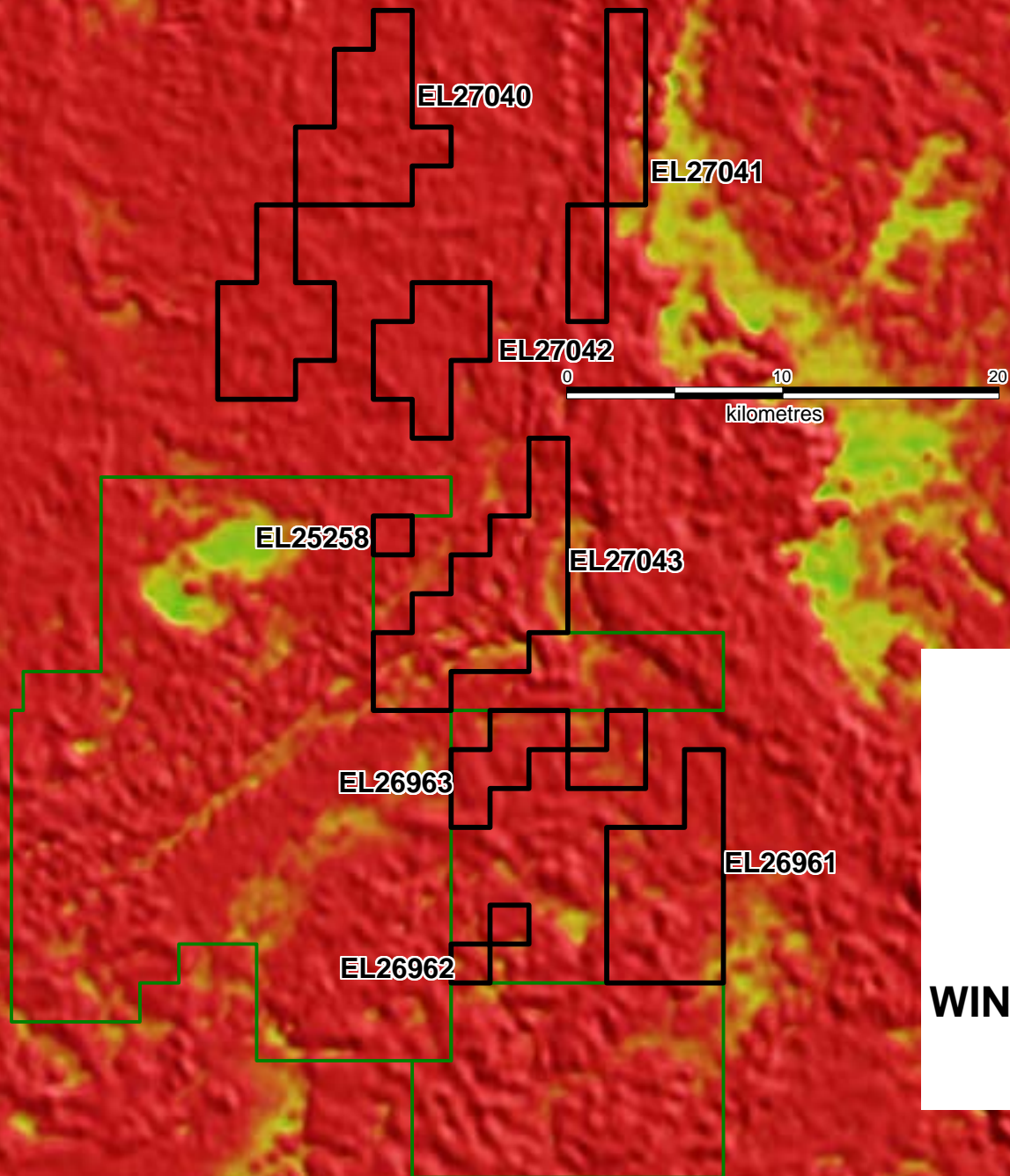


FIG 6e
WINGATE MTS NTH& EAST GROUP
NTGS TC RADIOMETRICS

