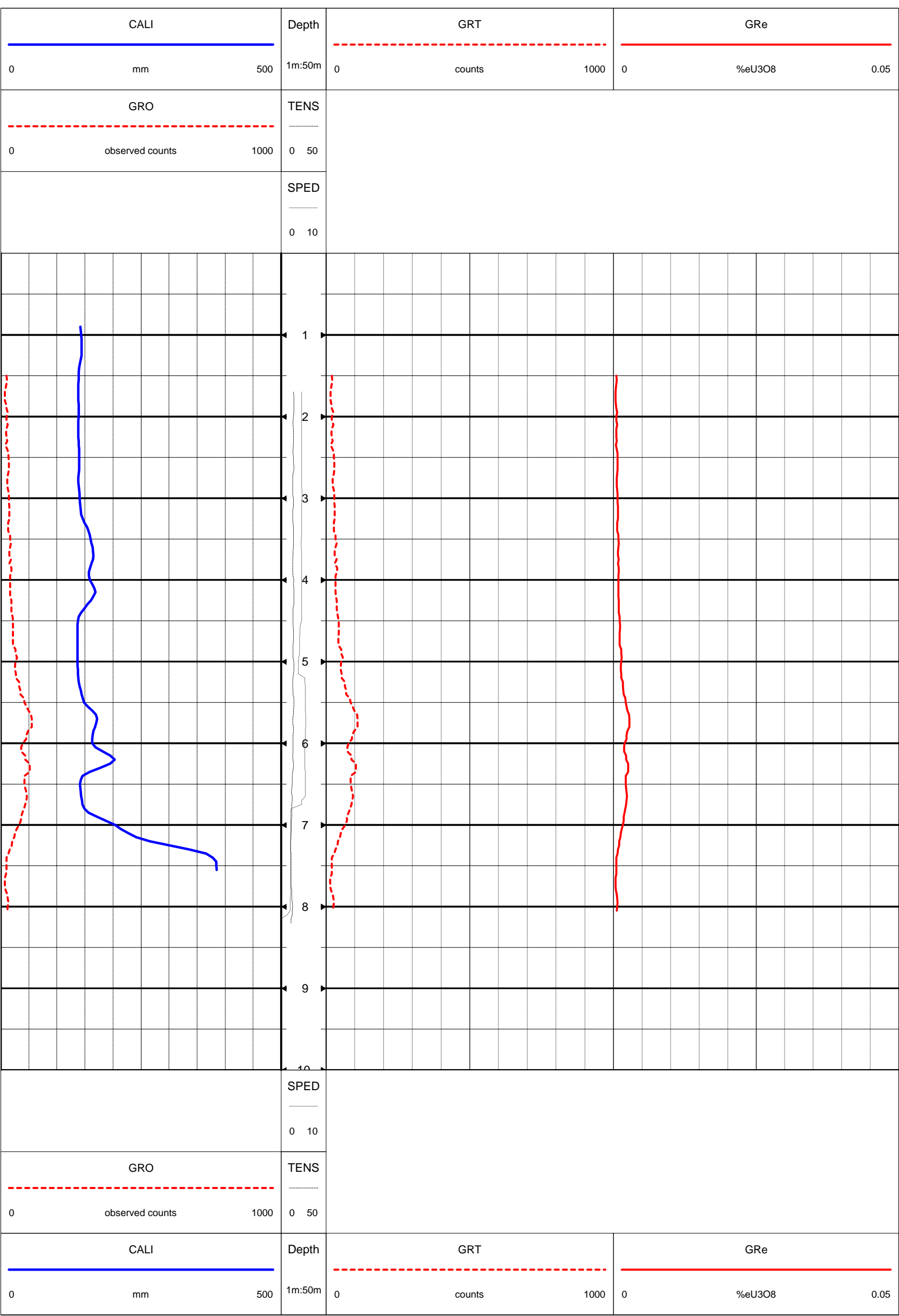

 BOREHOLE WIRELINE <i>"For logging and Interpretation Service"</i>		LOG TYPE CALIPER & GAMMA		BH ECAC168	
STATE NT		COMPANY SCIMITAR RESOURCES		UWI	
LOCATION TILMOUTH WELL		EASTING		AMG PROJ	
FIELD		NORTHING		ELEVATION	
LOG DATE 28/11/07		DRILLED DEPTH 51.0m			
LOGGED DEPTH 8.20m		DRILLED BY			
INTERVAL (m)		RECORDED BY RJAH			
DATUM GL		WITNESSED BY			
SERVICE COMPANY BOREHOLE WIRELINE Pty Ltd		UNIT BW03			
BOREHOLE RECORD (NB: INCL=90=Vertical, INCL=0=Horizontal)				CASING RECORD	
BIT TYPE	BIT SIZE	FROM m	TO m	AZI	INCL
AIRCORE	80.0mm	GL	51.0		
FLUID PROPERTIES				LOGGING RUNS	
TYPE (FLUID)				TOOL ID	RUN No
LEVEL (FLUID)				DUMMY	1
TEMP (FLUID)				CALX GR	2
RES (FLUID)					8.2
MUD SAMPLE					GL
					MAIN
REMARKS					



 BOREHOLE WIRELINE <i>"For Logging & Interpretation Service"</i>		LOG TYPE CALIPER & GAMMA		BH ECAC168	
STATE: NT		COMPANY SCIMITAR RESOURCES		UWI	
LOCATION TILMOUTH WELL		EASTING		AMG PROJ.	
FIELD		NORTHING		ELEVATION	
LOG DATE	28/11/07	DRILLED DEPTH		51.0m	
LOGGED DEPTH	8.20m	DRILLED BY			
INTERVAL		RECORDED BY RJAH			
DATUM	GL	WITNESSED BY			
		UNIT:		BW003	