



LOG TYPE

Gamma Ray

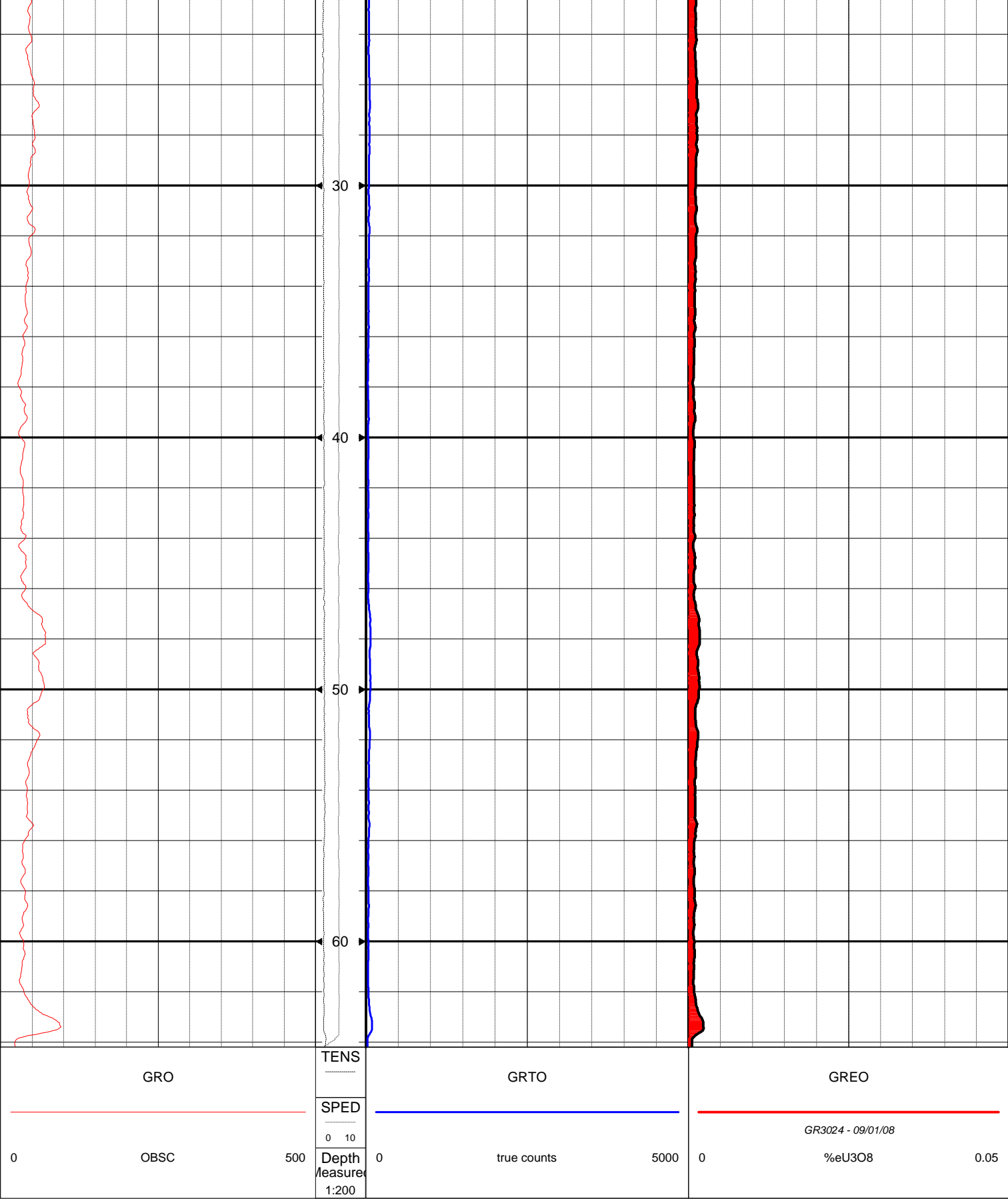
BH


MURB013

The figure displays three depth-based plots side-by-side, labeled GRO, GRT0, and GREO. Each plot has a vertical axis representing depth (0 to 20+) and a horizontal axis representing a measurement. The plots are overlaid on a grid.

- GRO (Left):** The horizontal axis is labeled "OBSC" with values 0 and 500. A red line fluctuates around 0.
- GRT0 (Middle):** The horizontal axis is labeled "true counts" with values 0 and 5000. A blue line fluctuates around 0.
- GREO (Right):** The horizontal axis is labeled "%eU3O8" with values 0 and 0.05. A red line fluctuates around 0.05.

Common labels across the plots include "Depth", "Measure", "1:200", "SPED", "TENS", and "GR3024 - 09/01/08".



 BOREHOLE WIRELINE "For Logging & Interpretation Service"		LOG TYPE Gamma Ray	BH MURB013
STATE:		COMPANY Bondi Mining	UWI 0000
LOCATION Murphy		EASTING	AMG PROJ.
FIELD		NORTHING	ELEVATION
LOG DATE	20/05/08	DRILLED DEPTH	66m
LOGGED DEPTH	64.2m	DRILLED BY	Arrinooka Drilling
INTERVAL		RECORDED BY	JPR
DATUM		WITNESSED BY	

