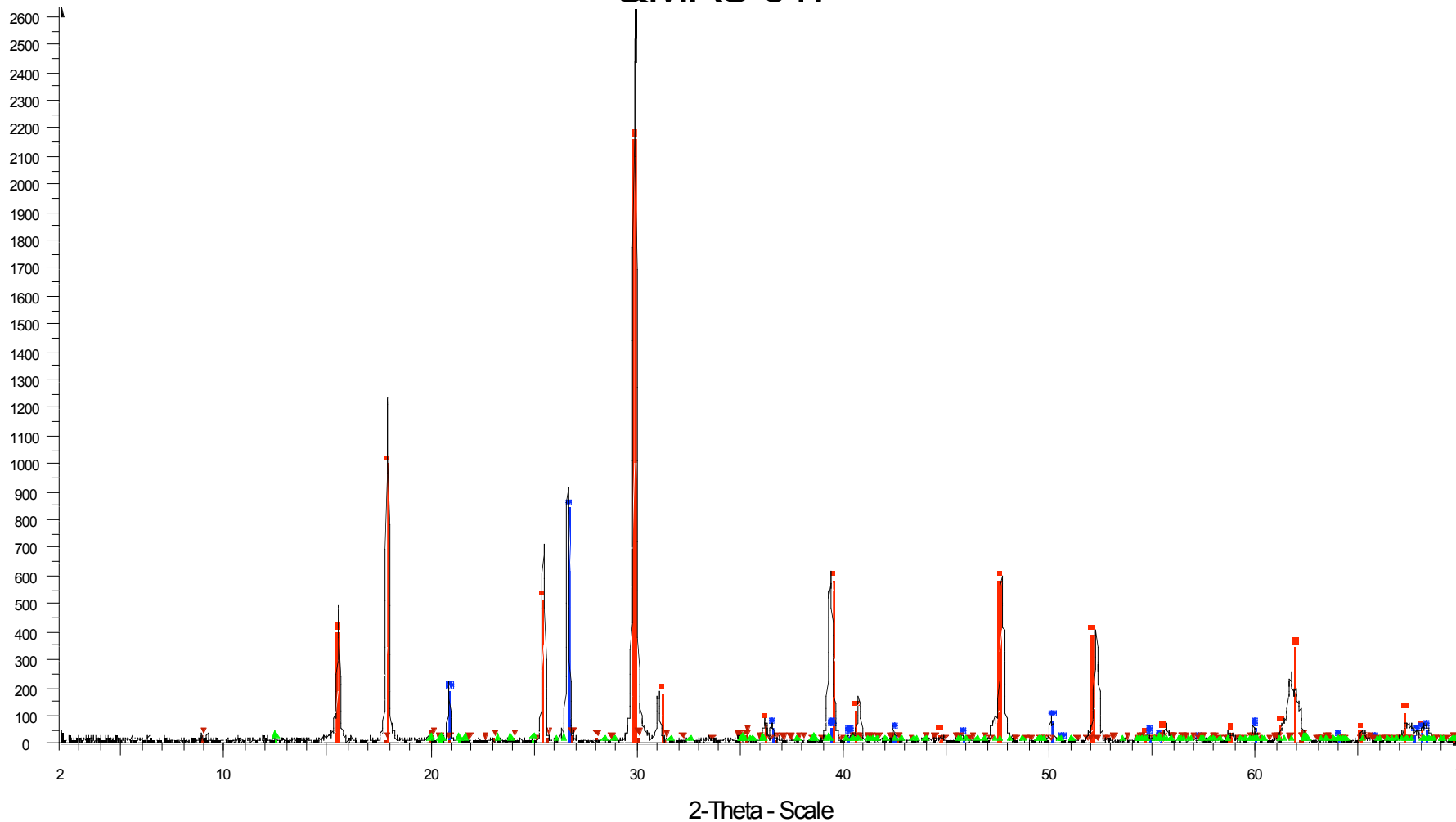


QMRS 617



QMRS617 - File: A22293.raw - Two: 2Th/Th locked - Start: 2.000° - End: 70.000° - Step: 0.020° - Step time: 1.2 s - Temp.: 25 °C (Room) - Time Started: 0 s - 2-Theta: 2.000° - Theta: 1.000° - Chi: 0.00° - Phi: 0.00°
Operations: Background 1.000, 1.000 | Import

- 01-071-1776 (C) - Alunite - $K_4Al_3(SO_4)_2(OH)_6$ - Y: 82.12% - d xbv. 1. - WL: 1.5418 - Rhombo. H.axes - a 7.02000 - b 7.02000 - c 17.22300 - alpha 90.000 - beta 90.000 - gamma 120.000 - Primitive - R-3m(166)-3-
- 01-070-3755 (C) - Quartz - SiO_2 - Y: 31.95% - d xbv. 1. - WL: 1.5418 - Hexagonal - a 4.91600 - b 4.91600 - c 5.40900 - alpha 90.000 - beta 90.000 - gamma 120.000 - Primitive - P3121 (152)-3 - 113.206 - I/cPDF2
- 01-089-6538 (C) - Kaolinite - $Al_2(Si_2O_5)(OH)_4$ - Y: 0.43% - d xbv. 1. - WL: 1.5418 - Tridinic - a 5.15400 - b 8.94200 - c 7.40100 - alpha 91.690 - beta 104.610 - gamma 89.820 - Base-centered - C1 (0)-2 - 329.914 - I
- 01-084-1304 (C) - Muscovite 2M1 - $KAl_3Si_3O_{10}(OH)_2$ - Y: 1.12% - d xbv. 1. - WL: 1.5418 - Monodinic - a 5.15790 - b 8.95050 - c 20.07100 - alpha 90.000 - beta 95.750 - gamma 90.000 - Base-centered - C2/c(15)-