



Tennant Creek
GOLD LIMITED

**RODINGA PROJECT
EL23678**

**ANNUAL TECHNICAL REPORT
For the Period
9 October 2004 to 8 October 2005
(Year 2)**

Prepared by:
Date:
Distribution:

Tennant Creek Gold (NT)
2nd March 2006
Tennant Creek Gold (NT)
Northern Territory Department of Business,
Industry, Resources and Development

1
1
OPEN FILE

CR2005 0639

CONTENTS

1. WORK SUMMARY
2. INTRODUCTION
3. TENURE
4. GEOLOGY
5. WORK COMPLETED
6. CONCLUSIONS AND RECOMMENDATIONS

LIST OF FIGURES

1. EL23678 LOCATION PLAN
2. RODINGA GEOLOGY PLAN
3. RODINGA TMI PLAN

LIST OF TABLES

1. TENEMENT DETAILS

APPENDICES

1. RODINGA GEOLOGY WITH CO ASSAYS
2. RODINGA GEOLOGY WITH CU ASSAYS
3. RODINGA GEOLOGY WITH NI ASSAYS
4. RODINGA GEOLOGY WITH PB ASSAYS
5. RODINGA GEOLOGY WITH ZN ASSAYS

1.0 WORK SUMMARY

Exploration conducted during the reporting period included literature review, geophysical review. No field or rehabilitation work was undertaken during the period. Based on these results, and company priorities, it is recommended that Tennant Creek Gold "TNG" should withdraw from this project. A surrender report shall soon follow.

2.0 INTRODUCTION

This report details work completed EL23678 for the year ending the 8th October 2005.

The Rodinga prospect EL23678 is located in the Amadeus Basin, 140 kilometres south east of Alice Springs (Figure 1).

Assay results from previous explorers returned anomalous Ni-Co-Cu-Pb-Zn over the central and western side of the exploration license. Additionally a large magnetic anomaly on the northern boundary remains untested.

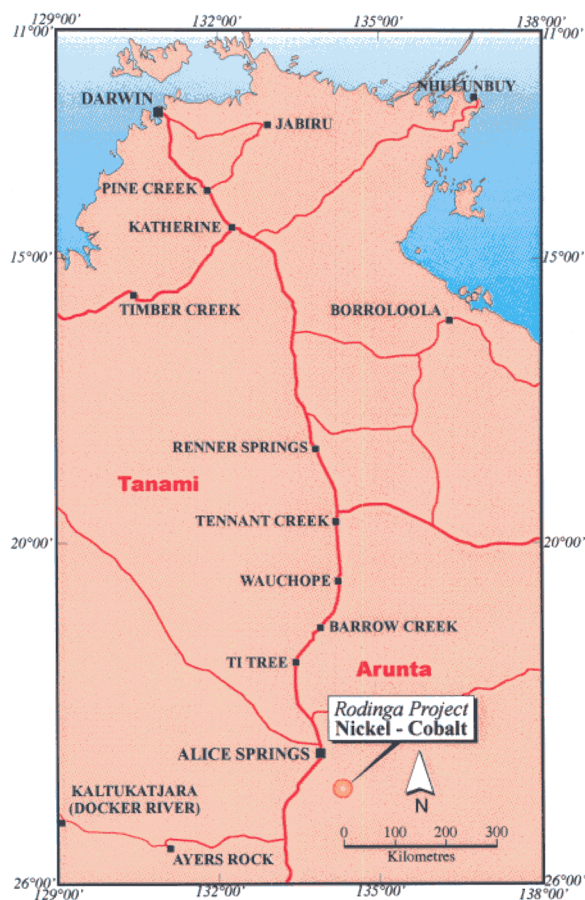


Figure 1 Rodinga EL 23678 Location Map

3.0 TENURE

EL23678 is 100% owned by Tennant Creek Gold (NT). The following table details its current tenure.

Table 1. - Tenement Details

TENEMENT	AREA	STATUS	GRANT DATE	RENT	COVENANT	EXPENDITURE COMMITMENT
EL23678	474 SBKS (1426 km ²)	Live	9/10/2003	NA	\$31,500	\$4740

4.0 GEOLOGY

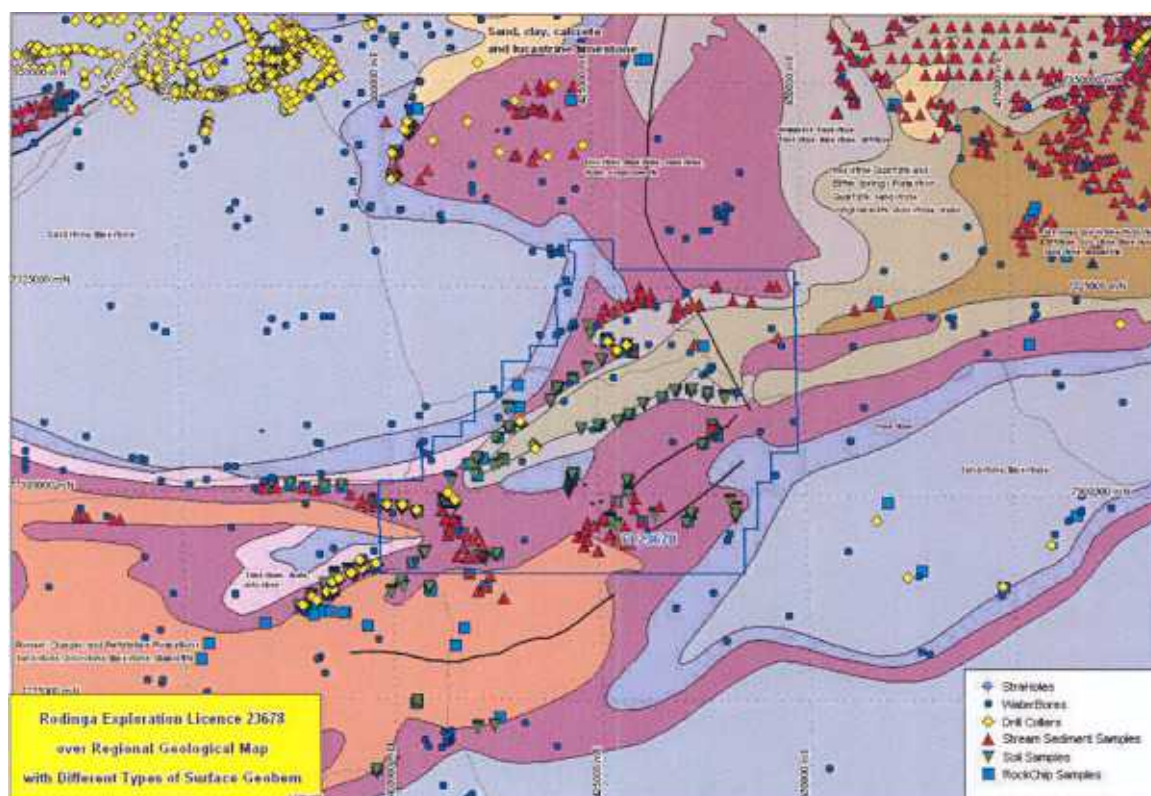


Figure 2 Rodinga Geology Plan

5.0 WORK COMPLETED

Work completed during the reporting period included literature reviews, database compilation and a review of the magnetic anomaly shown below (Figure 3).

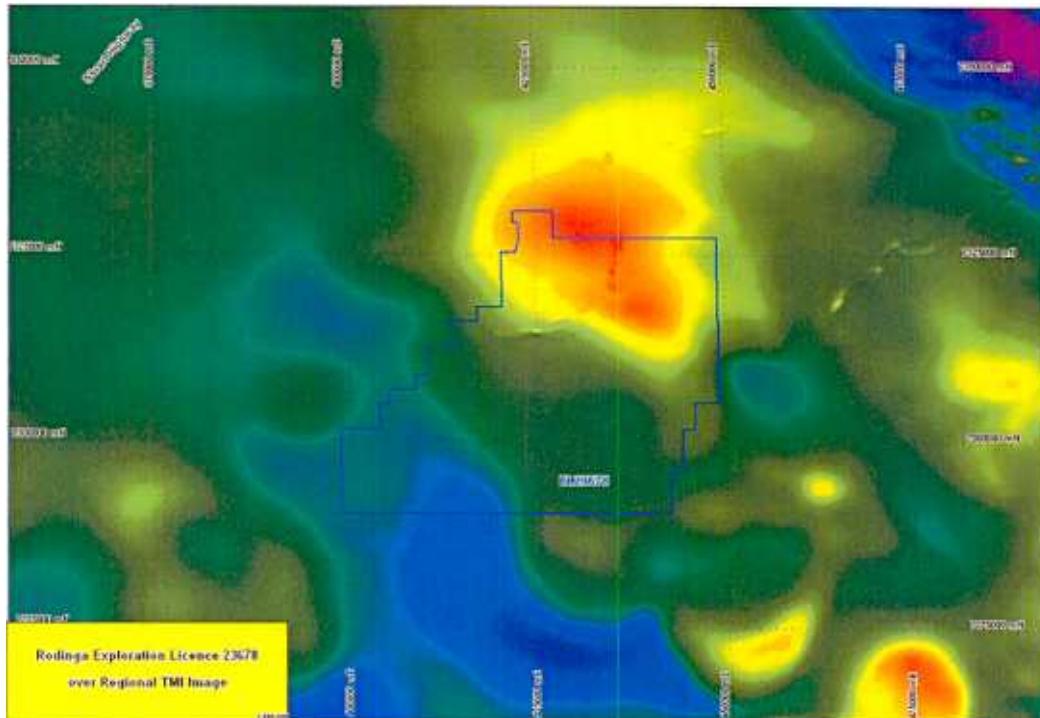


Figure 3 Rodinga TMI Map

This anomaly is deep seated; estimates put the depth at greater than 1km below the surface. Clearly it's too deep to be an exploration target. Combined with the depth of transported cover, meaningful assays will be expensive to obtain.

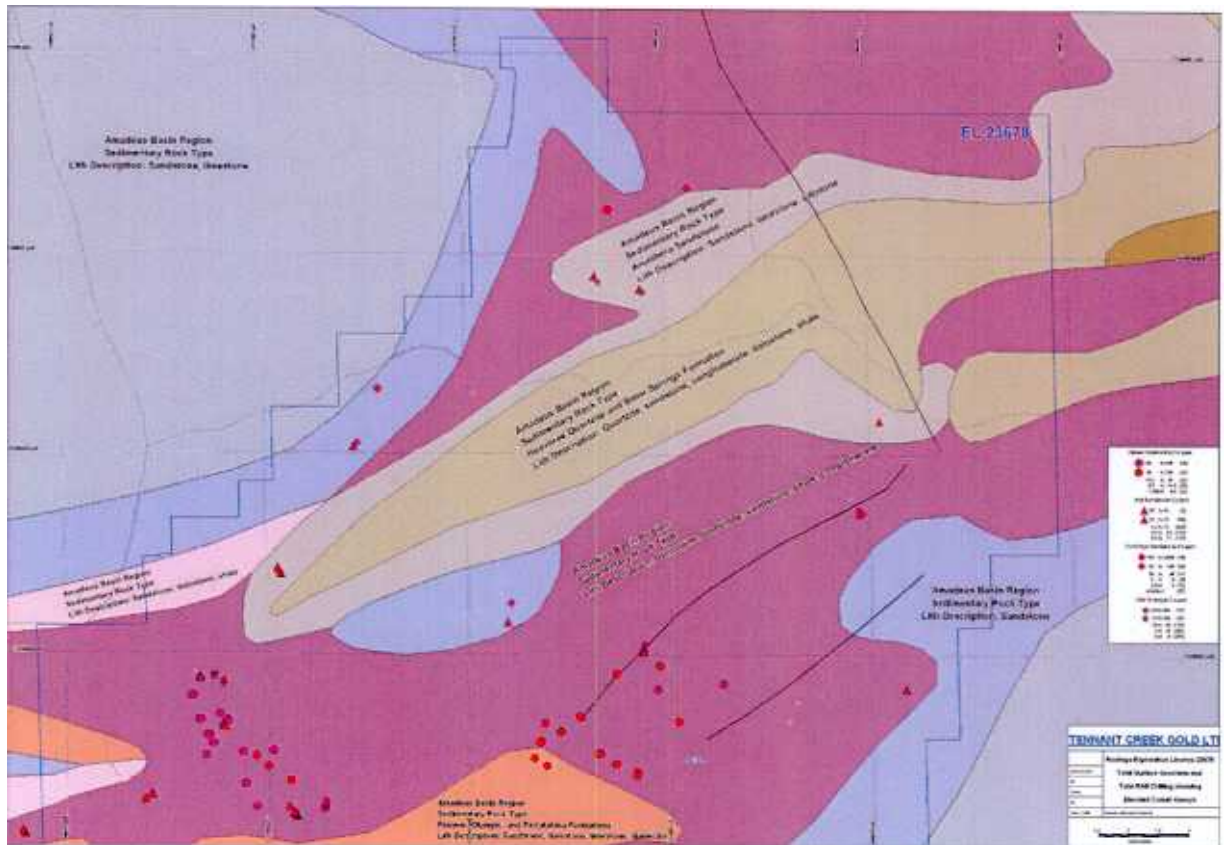
Geochemical maps derived from stream sampling and rock chips show only anomalous base metal values (Appendices 1-5).

6.0 CONCLUSIONS AND RECOMMENDATIONS

EL23678 lies within the Amadaeus Basin, an area historically not associated with economic gold or base metal mines. Follow up exploration, given the chances of success, is costly and time consuming. It's recommended that this ground be surrendered in its entirety.

APPENDICES

APPENDIX 1 RODINGA GEOLOGY WITH CO ASSAYS



TENNANT CREEK GOLD FIELD

Geological Map

Legend

- Geological Units**
 - Archean Basin Region
 - Sedimentary Rock Type
 - Lith Description
- Structural Features**
 - Fault
 - Lineament
- Other Features**
 - Watercourse
 - Topographic Contour

Scale

North Arrow

Map Title

Map Date

Map Author

Map Project

Map Version

Map Status

Map Notes

Map Legend

Map Symbols

Map Units

Map Scale

Map North Arrow

Map Title

Map Date

Map Author

Map Project

Map Version

Map Status

Map Notes

Map Legend

Map Symbols

Map Units

Map Scale

Map North Arrow

[illegible]

1



