

**EL 23722**

**Batchelor, Northern Territory**

**First Relinquishment Report**

**( 10 Blocks Dropped 17/8/2005 )**

by

**J. A. Earthrowl MSc  
PO Box 219  
BATCHELOR. NT 0845**

for

**J.A. Earthrowl  
Wolpers & Flowers Constructions (NT) Pty. Ltd.  
Kimalta Pty. Ltd  
Dolwave Pty. Ltd.  
Poatina Pty.Ltd  
Rod Hass**

**Batchelor , December 2005**

## **TABLE OF CONTENTS**

- 1. INTRODUCTION**
- 2. TENEMENT STATUS**
- 3. LOCATION**
- 4. GEOLOGY**
- 5. PREVIOUS EXPLORATION**
- 6. EXPLORATION PROGRAM AND TARGETS**
- 7. WORK DONE IN AREA RELINQUISHED**

## **LIST OF FIGURES**

**Fig 1 EL 23722– Latitudes and Longitudes**

**Fig 2 EL 23722 – Regional Geology (NTGS)**

**Fig 3 EL 23722 – EL Showing Blocks Relinquished and Areas of Work**

**Fig 4 EL 23722 – NW Corner of EL showing Traverses**

## **LIST OF APPENDICES**

**App 1 Assays of Soil Samples**

**App 2(i) Rock Sample Location and Descriptions**

**App 2(ii) Rock Sample Assays**

**App 3 Stream Sediment (BLEG) Samples with Locations**

**App 4 Rock Sample Assays with Locations**

## **1. INTRODUCTION**

This document is the First Relinquishment Report for Exploration Licence 23722. The document reports on field activities during the period 18<sup>th</sup> September 2003 through to 17<sup>th</sup> September 2005.

## **2. TENEMENT STATUS**

The tenement was applied for by J A Earthrowl on 29<sup>th</sup> October 2002; advertised on 2<sup>nd</sup> April 2002 and granted on 18<sup>th</sup> September 2003. A cash guarantee of \$5,000 has been lodged. The tenement is over Freehold land and all landowners were notified as required.

On 6<sup>th</sup> October 2003 the original grantee J. A. Earthrowl transferred 10% equity to five partners in exchange for financial participation in the exploration of the tenement. This arrangement has been formalised in the 'Rum Jungle West Joint Venture Agreement Exploration Licence 23722' and registered with the Mining Registrar on 20<sup>th</sup> February 2004 as Dealing No. 91866.

The equity partners with 10% each are

Rod Hass

Poatina Pty. Ltd.

Wolpers & Flowers Constructions (NT) Pty. Ltd.

Dolwave Pty. Ltd.

Kimalta Pty.Ltd

leaving John A. Earthrowl with 50% equity.

## **3. LOCATION (Fig 1)**

EL 23722 is located west of Batchelor and is centred at 13° 00" S, 130° 56' E. It is east of Litchfield National Park and is accessible from the bitumen road that serves that park from Batchelor. Poorly maintained bush tracks give access to the EL only during the dry season from June to November, hindering exploration activity at other times.

## **4. GEOLOGY (Fig 2 )**

EL 23722 is underlain by Early Proterozoic stratigraphy basal to and west of the Rum Jungle and Waterhouse Granite Complexes. The regional strike of the rocks is north to north northwest with folding tight. The stratigraphy within the tenement comprises:

Burrell Creek Formation

Gerowie Tuff

Whites Formation

Coomalie Dolomite

## **5. PREVIOUS EXPLORATION**

EL 23722 flanks the Rum Jungle Mineral Field and as such has been subjected to some systematic exploration in the past. The past exploration has been primarily targeting uranium and, to a lesser extent, base metal mineralisation. Some regional sampling of stream sediments and rock chip for gold has been recorded.

## **6. EXPLORATION PROGRAM AND TARGETS**

The main target for EL 23722 is gold mineralisation within the folded Burrell Creek Formation and to a lesser extent base metal mineralisation at the Coomalie Dolomite/Whites Formation interface. Known gold mineralisation has been reported from the south and east of the tenement .

## **7. WORK DONE AND RESULTS WITHIN AREA RELINQUISHED**

### **7.1 Stream Sediment Sampling (BLEG)**

Ten stream sediment samples have been collected and assayed by the BLEG method. Appendix 3 shows their GPS locations with assays.

Of the ten samples collected only two (# 7192, 7196) assayed below the detection limit of 0.1ppbAu . A further two assayed 0.1ppb. The maximum readings of 0.8ppb were recorded from #3383 and #7193 . All other samples returned values between 0.2ppb and 0.7ppb.

### **7.2 Rock Chip Sampling**

The location and assays of the 44 rock chip samples collected are given in App 2

Of the 44 samples assayed:

- one sample (#1941) recorded below the detection limit of 0.001 ppm Au
- thirteen samples recorded 0.001 ppm Au
- twenty-six samples recorded between 0.002 and 0.027 ppm Au

The highest rock sample assay came from #7336 of 0.128 ppm Au which was from a complex quartz vein within the Burrell Creek shales.

The second highest value of 0.05 ppm Au from #7333 was from quartz stockworks also in Burrell creek shales.

## **9. CONCLUSIONS**

Overall the work on EL 23722 is indicating the presence of minor gold mineralisation within quartz veining in the Burrell Creek Formation.

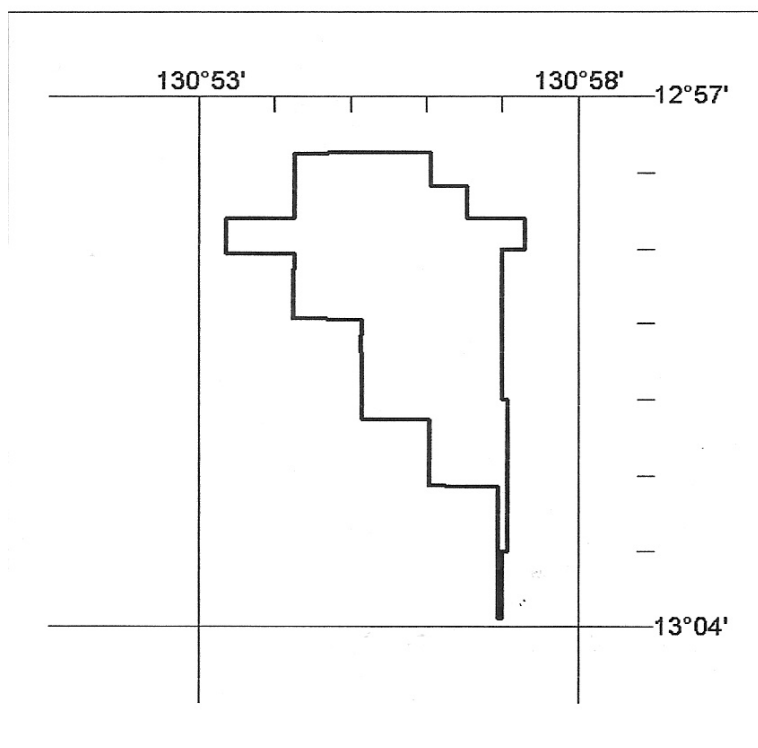
The regional stream sediment results indicate minor gold within the stratigraphy.

Regional rock chips values have produced no highly anomalous values , however they support the widespread presence of minor gold mineralisation as indicated by stream sediment sampling.

**FIG 1**

**FIG 2**

## Second Schedule (Plan of Area)

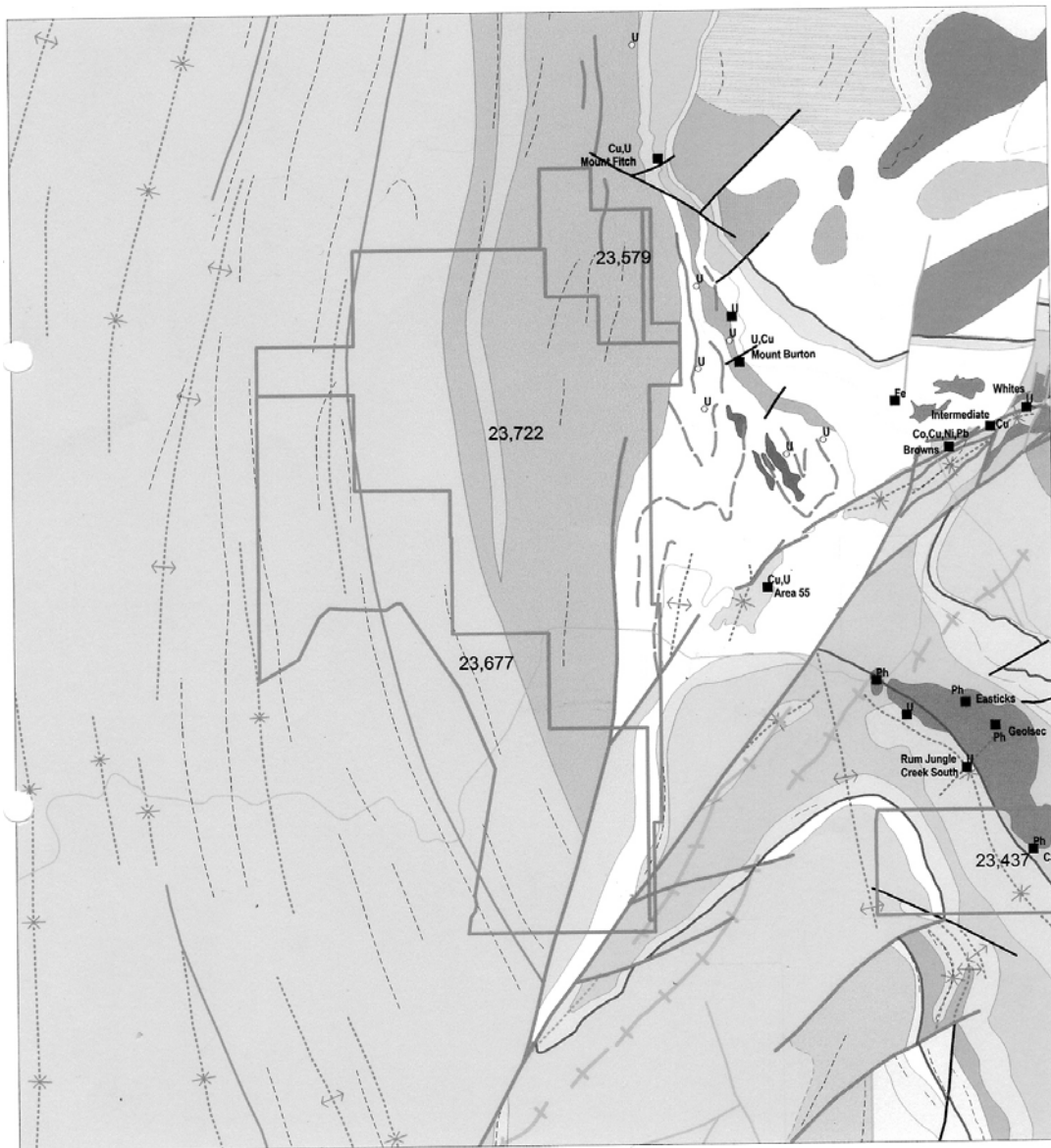


**EL23722**  
**20 Blocks**  
**31.69 sq kms**

Fig. 1



RUM JUNGLE WEST PROJECT EL23677, EL23722  
Geology after NTGS

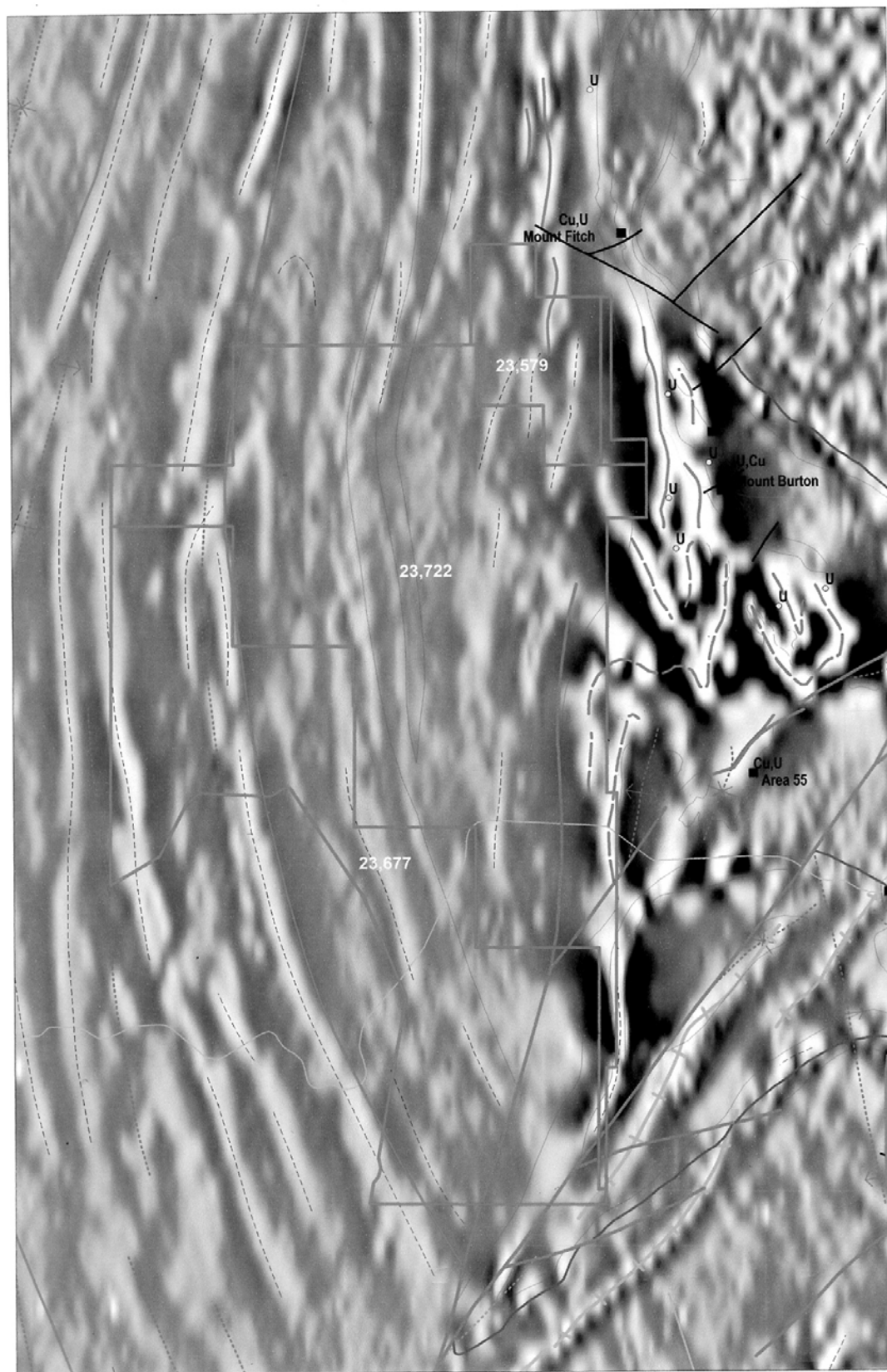


EL23722 Regional Geology

Fig. 2

Fig. 3

RUM JUNGLE WEST PROJECT EL23677, EL23722  
First Vertical Derivative AGC TMI



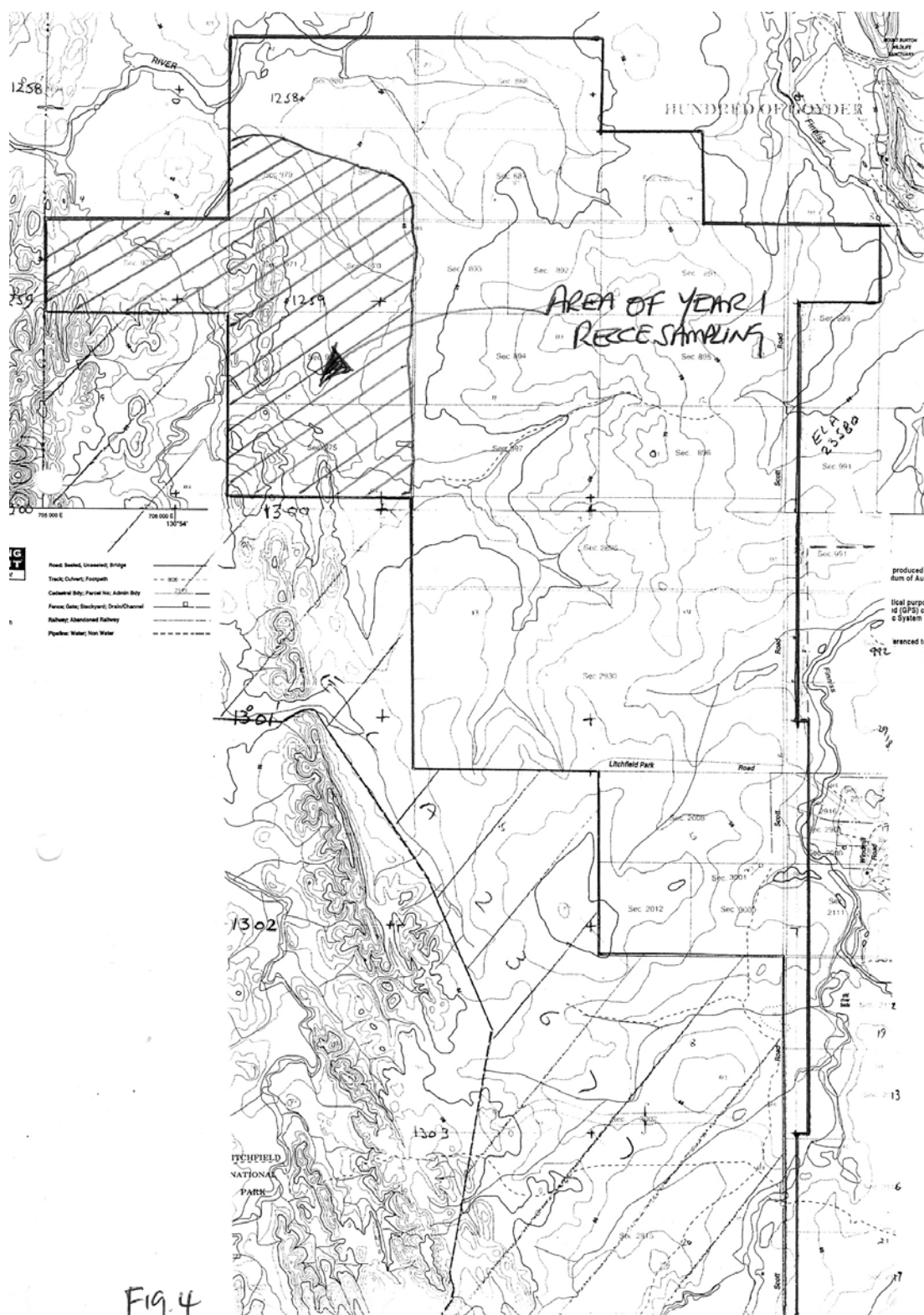
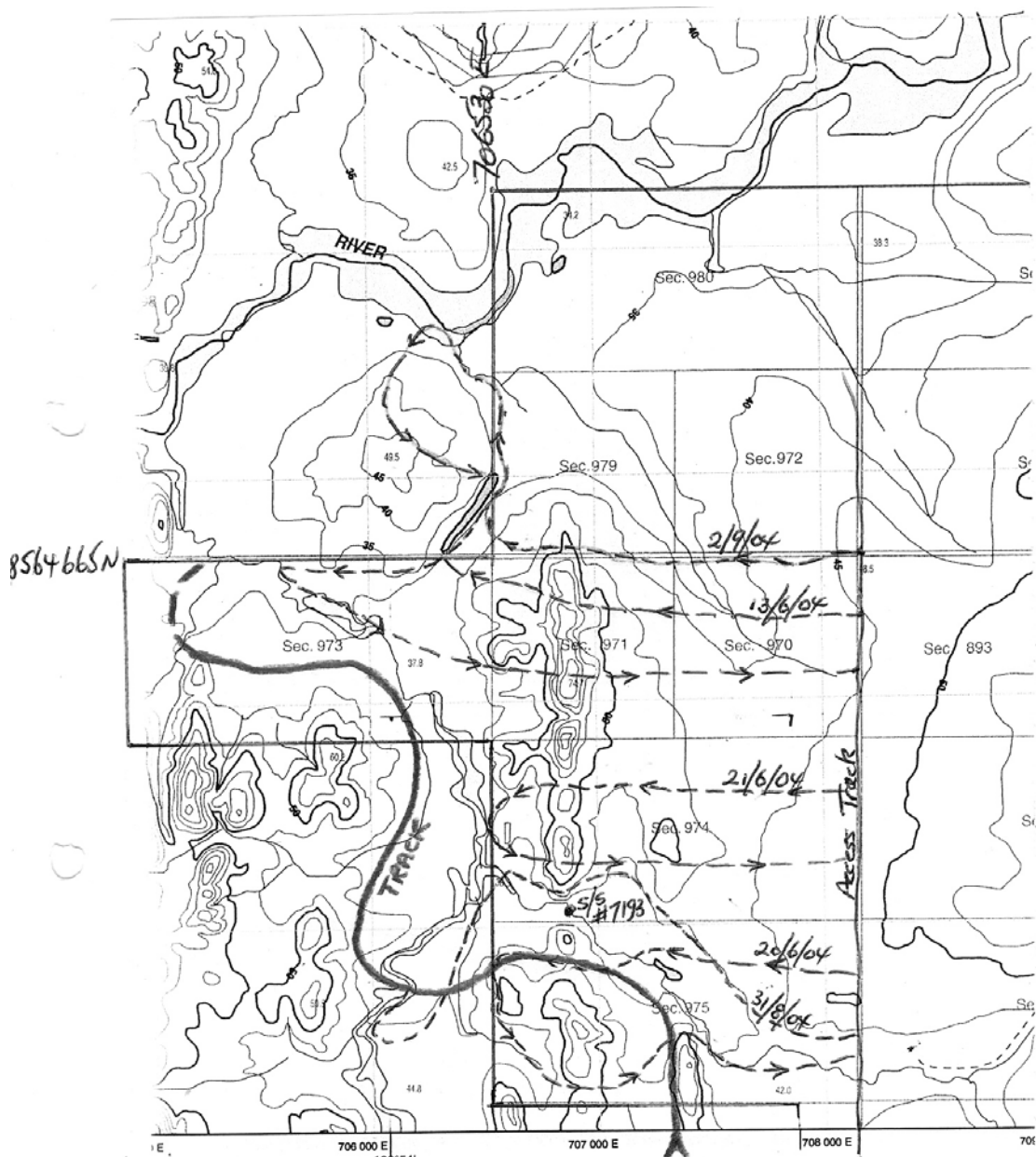


Fig. 4



NW Corner EL 23722 showing Year 2 Travers  
and significant sample sites  
FIG. 5