



**TANAMI**  
**EXPLORATION NL**  
ABN 45 063 213 598

**PARTIAL  
RELINQUISHMENT REPORT**

**EL 22923**

**STRANGWAYS**

28 August 2002 - 27 August 2005

**Author**  
C Rohde

October 2005

**Distribution:**

- Department of Business, Industry, & Resource Development (1)
- Native Title Unit - Central Land Council (1)
- Tanami Exploration NL (1)

File:cr93dpifmRR2005\_Strangways

## CONTENTS

	<i>Page</i>
1.0 Summary .....	1
2.0 Introduction.....	1
3.0 Tenure .....	1
4.0 Geology .....	2
5.0 Exploration.....	2
6.0 Bibliography.....	2

### TABLES

Table 1	Tenement Details
---------	------------------

### FIGURES

Figure 1	Tenement Location Plan	1 : 1,000 000
Figure 2	Tenement Locality	1 : 500,000
Figure 3	Surface Sampling	1 : 500,000

### PLATES

Plate 1	Regional Geology	1 : 250,000
---------	------------------	-------------

### DIGITAL APPENDICES (supplied on CD)

<i>FILE NAME</i>	<i>DESCRIPTION</i>
EL_22923_SG2_ROCK2004A	Rockchip samples
EL_22923_GEOLOGY_CODES	Description of geology codes used for surface sampling and drilling

## 1.0 SUMMARY

EL 22923 'Strangways' lies within the Central Arunta region and is situated approximately 200 km northwest of Alice Springs (**Figure 1**). The tenement was granted on 28 August 2002 to Tanami Exploration NL (TENL), a wholly owned subsidiary of Tanami Gold NL (TGNL), a publicly listed company. A surrender of 203 blocks was completed after the third year of tenure. This report describes exploration carried out on the surrendered portions of EL 22923 'Strangways' during the period 28 August 2002 to 27 August 2005 (**Figure 2**).

The tenement was explored as part of the Burt Plain Project. The relinquished tenement area is mainly underlain by high grade metamorphic rocks of the Strangways Metamorphic Complex, which comprises felsic and mafic granulites, felsic metavolcanics, ortho-quartzite and calc-silicate rocks. Much of the area is overlain by recent cover. Two rockchip samples were taken from the area of the Coles Hill Zinc prospect returning no anomalous results.

## 2.0 INTRODUCTION

The Burt Plain project is located approximately 60 km north of Alice Springs and is accessed via the Stuart Highway, which runs through the western relinquished portion of EL 22923 (**Figure 1 and 2**). The Darwin to Alice Springs railway also traverses the project area. Existing roads and station tracks provide further access.

EL 22923 was applied for by TENL in December 2000 on the grounds of perceived prospective lithologies and aeromagnetic features including major structures.

## 3.0 TENURE

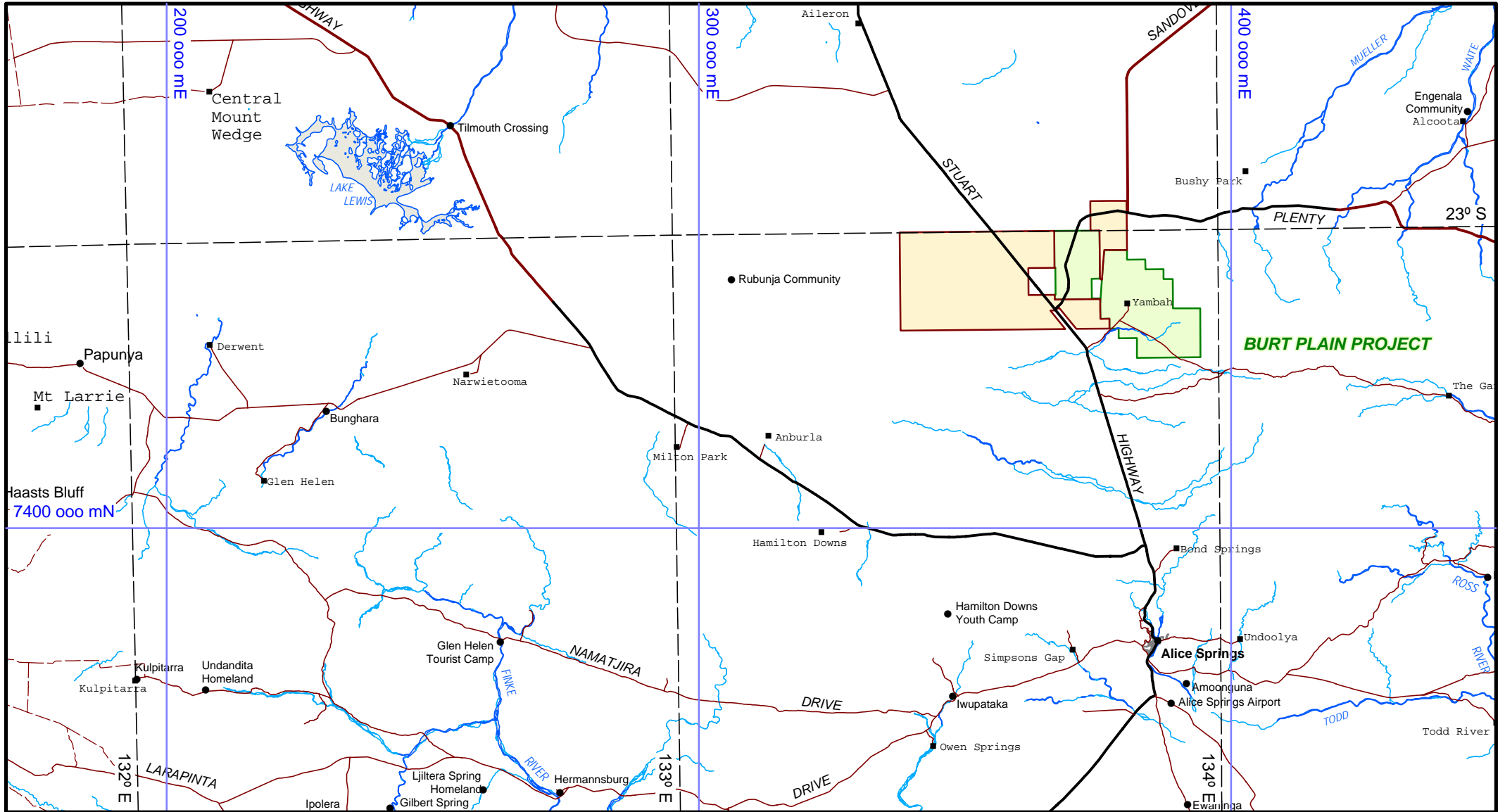
EL 22923 was granted to TENL on 28 August 2002. Tenement details are shown below. At the end of the second year of term the tenement was the subject of a partial surrender in respect of 236 blocks and at the end of the third year of term of 203 blocks (**Figure 2**). EL 22923 was reduced to 33 blocks with effect from 28 August 2005.

**Table 1: Tenement Details**

Tenement	Tenement No	Blocks Granted	Blocks Relinqu (2 <sup>nd</sup> )	Blocks Retained	Grant Date	Expiry Date
Strangways	EL 22923	498	203	33	28-Aug-02	27-Aug-08

In 2002, EL 22923 was incorporated into a joint venture with BHP Billiton / Teck Cominco who explored for Broken Hill-style lead-zinc mineralisation in the Alice Springs district. BHP Billiton/Teck Cominco withdrew from the JV in January 2003.

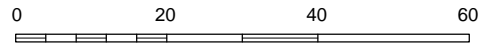
EL 22923 was incorporated into the TENL's 'Harts Range' Indigenous Land Use Agreement (ILUA) by Deed of Covenant on 20 May 2003.



**FIGURE 1**

ORIGINATOR: C.Rohde	DATE: Sept 2005	DRAWN: A. Weston
------------------------	--------------------	---------------------

1 : 1,000,000



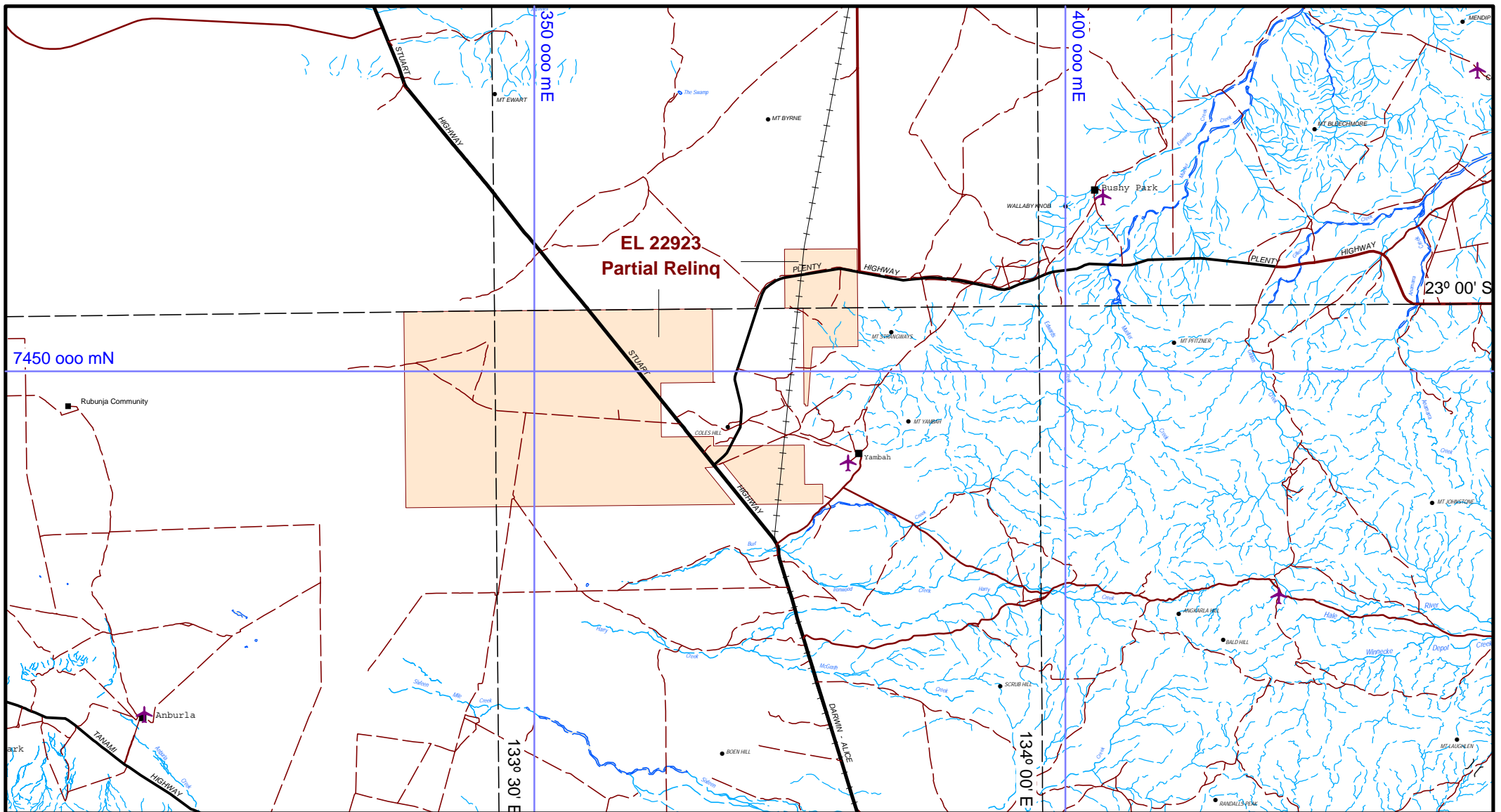
MGA Zone 53 (GDA94)

**BURT PLAIN**

**TENEMENT LOCATION**

**TANAMI GOLD NL**

PLAN No: **48\_Tt\_013**



**FIGURE 2**

ORIGINATOR: <b>C.Rohde</b>	DATE: <b>Sept 2005</b>	DRAWN: <b>A. Weston</b>
-------------------------------	---------------------------	----------------------------

**1 : 500,000**



MGA Zone 53 (GDA94)

kilometres

**BURT PLAIN**

**TENEMENT LOCALITY**

**TANAMI GOLD NL**

PLAN No: **48\_Tt\_014**

## 4.0 GEOLOGY

The Burt Plain Project lies within the Arunta region of the North Australian Craton. Basement geology is dominated by quartzofeldspathic gneiss of the Strangways Metamorphic Complex, which have been interpreted to be basal (>1870 Ma) Narwietooma Metamorphics.

EL 22923 is situated in the northwestern corner of the Alice Springs 1:250,000 sheet (SF53-14). A blanket of recent cover covers the majority of EL 22923 'Strangways'. Regional interpreted geology completed by Ding in 2001 is shown on **Plate 1**. Aeromagnetic interpretation and isolated outcrops in the region suggest Palaeoproterozoic Strangways Metamorphic Complex for the surrendered tenement area. Ding (2001) assigns these rocks to the Lower Proterozoic 'The Garden Metamorphics' unit comprising felsic and mafic granulites, minor felsic metavolcanics, ortho-quartzite and calc-silicate rocks.

## 5.0 EXPLORATION

In 2002-03, EL 22923 was included within an Arunta-wide bedrock geological interpretation and geophysical targeting exercise conducted by consultant geophysicist Dr Jason Myers and Dr Nathan Jombwe. Several targets were identified and reviewed on structural and lithological basis.

In 2004, two rockchip samples were collected from the eastern portion of the surrendered tenement portion near the Coles Hill Zn prospect (**Plate 1, Figure 3**). The rockchip samples were analysed by Genalysis for Au by AAS (ppb level) and As, Ag, Bi, Cd, Co, Cu, Mo, Ni, Pb, Sb, W and Zn by OES after aqua regia digestion. No significantly elevated values were returned.

## 6.0 BIBLIOGRAPHY

Ding, P., 2001. Pre-Cenozoic solid Geology Map of the Strangways Range to Harts Range Area, Explanatory Note, Tanami Gold NL, unpublished report.

English, L. 2003. Huckitta, Harts Range and Burt Plain Project Assessment. Unpublished Tanami Gold NL In-house report.

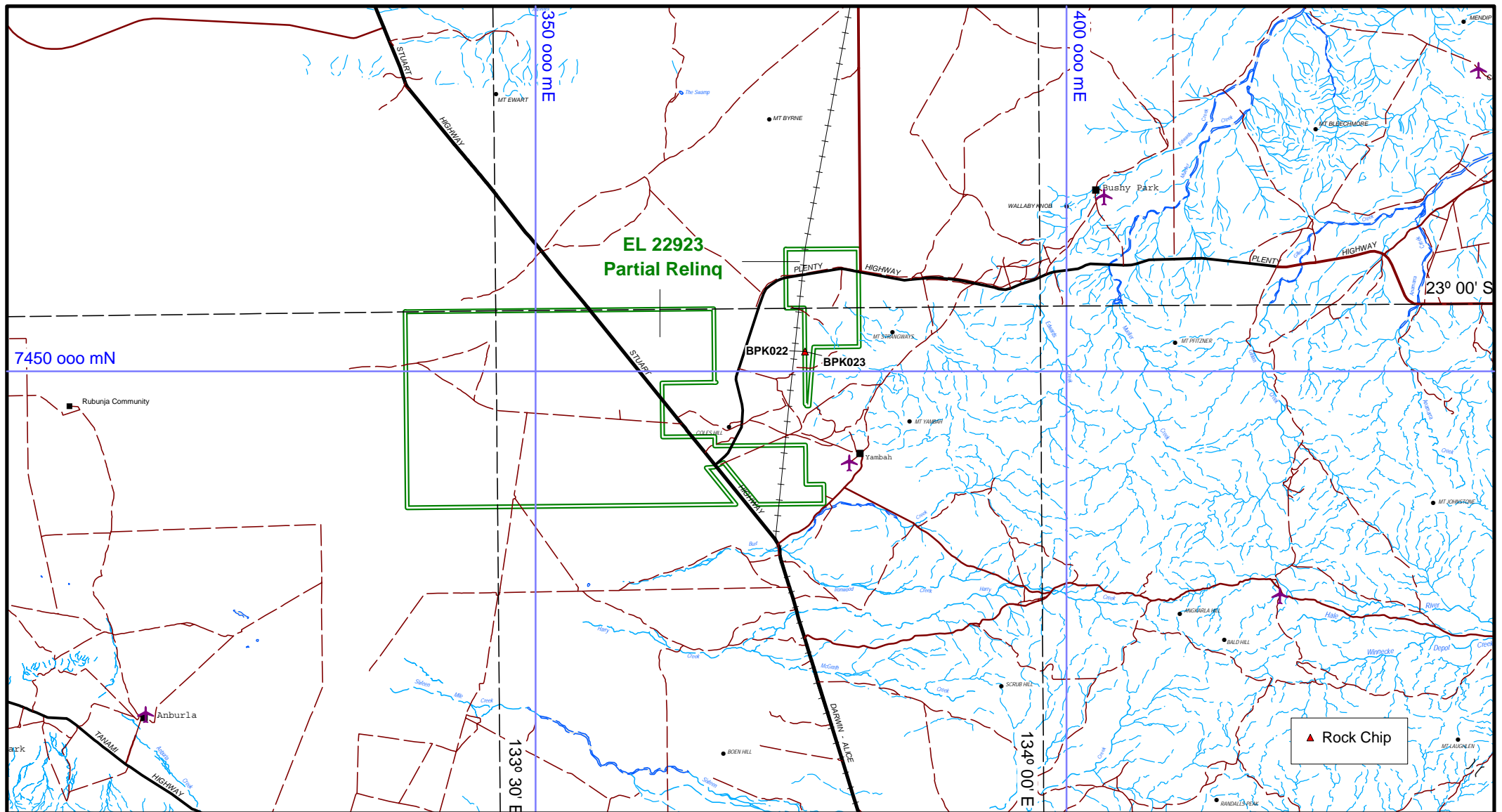
Geodiscovery Group, 2003. Report on Exploration Activities on ELs 9528, 9529, 9774, 10158, 10302, 10401, 22446, 22923 and EL Applications 23630 and 23650, Tanami Gold JV, Central Arunta Project, NT. Unpublished BHP Billiton / Teck Cominco In-house report

Jombwe, N. 2003. Report on evaluation of Openfile Data for ESZ Gold Targets, Stratiform Copper Targets and Iron Oxide Copper Gold Targets, Central Arunta Block, NT. Unpublished Tanami Gold NL In-house report.

Rohde, C., 2004. First Annual Report on EL 22923 'Strangways' for the year ending 27 August 2003, Tanami Exploration NL. Unpublished Report to Northern Territory Department of Mines and Energy.

Rohde, C., 2004. Combined Annual Report on the Burt Plain Project on EL 10401 'Yambah' and EL 22923 'Strangways' for the year ending 5 December 2005, Tanami Exploration NL. Unpublished Report to Northern Territory Department of Mines and Energy.

Scrimgeour, I., 2003. Developing a revised framework for the Arunta Region. AGES, Record of Abstracts, Northern Territory Geological Survey.



**FIGURE 3**

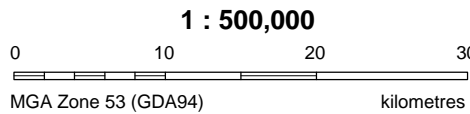
ORIGINATOR:  
C.Rohde

DATE:  
Sept 2005

DRAWN:  
A. Weston

**BURT PLAIN**

**TANAMI GOLD NL**



**SURFACE SAMPLING**

PLAN No: **48\_Cr\_003**

EL 22923

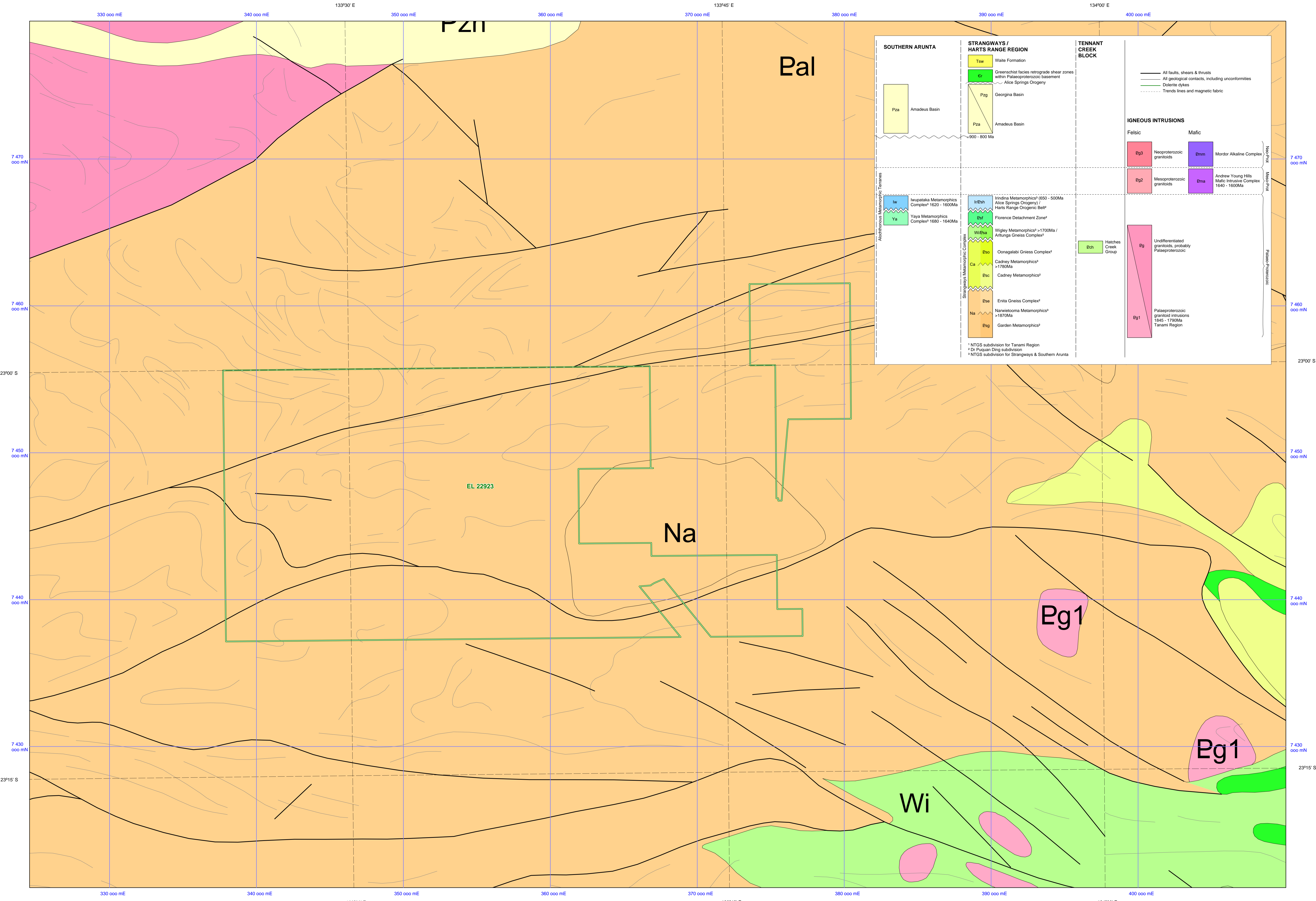
Strangways

ROCK

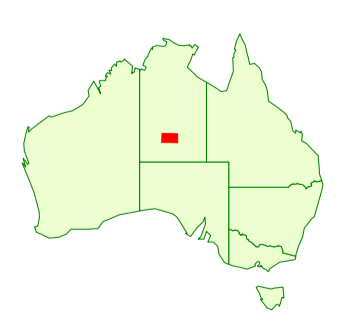
2004

Sample No	Grid	Easting	Northing	Au_ppb	As_ppm	Ag_ppm	Pt_ppb	Pd_ppb	Cu_ppm	Pb_ppm	Zn_ppm	Regolith	Lithology	Date	Geo
BPK022	MGA53	375375	7451848	0	9	0.2	-1	-1	49	77	29	Is	GD	28/10/2004	DMB
BPK023	MGA53	375366	7451855	1	8	0.2	-1	-1	91	25	16	Is	GD	28/10/2004	DMB
2			Maximums	1	9	0.2	-1	-1	91	77	29				





**Explanatory Note:**  
 Bedrock interpretation utilising aeromagnetics, gravity, radiometrics and Landsat imagery tied into published geological fact maps (NTGS and AGSO).  
 Compilation includes NTGS bedrock interpretation of Granites-Tanami region and in-house TGNL bedrock interpretations by Ding PuQuan, Deng Qi, Jayson Meyers and Tim Smith between 2000 and 2002.



**TANAMI GOLD NL**  
**BURT PLAIN - Strangways**

**EL 22923**  
**INTERPRETED GEOLOGY**

1 : 100,000

ORIGINATOR: **C.Rohde** DATE: **Sept 2005** DRAWN: **A. Weston**

PLAN No: **48\_GI\_005**

**PLATE 1**