



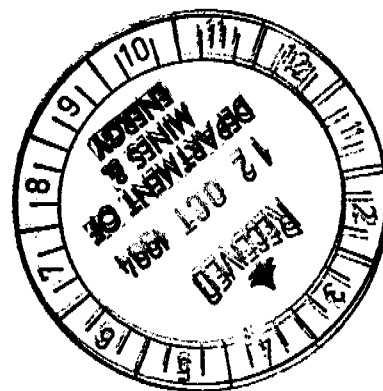
**EXPLORATION LICENCE 7686  
WARREGO EAST**

**SECOND YEAR RELINQUISHMENT REPORT**

**10 APRIL 1992 - 9 APRIL 1994**

**LICENSEE:**

**TC8 PTY LTD  
A.C.N. 009 644 188**



**TENNANT CREEK 1:250 000  
SE53-14  
SHORT RANGE 1:100 000  
5659**

**P. G. SIMPSON  
DARWIN, N.T.  
SEPTEMBER, 1994**

## **SUMMARY**

One graticular block was relinquished from Exploration Licence 7686 at the end of the second year of tenure, on 9th April 1994. This block had been explored by geochemical lag sampling and a detailed airborne magnetic and radiometric survey. The strong aeromagnetic feature in the relinquished block is of interest for possible ironstone related gold/copper mineralisation. To enable further exploration the block was applied for under Mineral Claims C1315 to C1323.

## CONTENTS

|   | PAGE |
|---|------|
| SUMMARY .....                           | i.   |
| CONTENTS .....                          | ii.  |
| 1. INTRODUCTION.....                    | 1    |
| 2. WORK DONE.....                       | 1    |
| 2.1 Geochemical lag sampling trial..... | 1    |
| 2.2 Airborne geophysical survey .....   | 1    |
| 3. CONCLUSIONS.....                     | 2    |

## FIGURES

1. TENEMENT LOCATION
2. GEOCHEMICAL LAG SAMPLE LOCATIONS
3. GEOCHEMICAL LAG SAMPLE TRAVERSE
4. RESIDUAL MAGNETIC INTENSITY CONTOURS

## APPENDIX

### LAG SAMPLE ASSAY RESULTS

## 1. INTRODUCTION

This report records the exploration work for gold and copper carried out on the area of Exploration Licence 7686 relinquished at the end of the second year of tenure on 9th April 1994.

Exploration Licence 7686 "Warrego East" is held by TC8 Pty Ltd, a subsidiary of Giants Reef Mining N.L. The Licence area, originally of 3 blocks totalling approximately 10 square kilometres, was reduced to 2 blocks at the end of the second year.

The area is located approximately 43 kilometres northwest from Tennant Creek, and is centred about 4 kilometres northeast from the Warrego mine (Figure 1). There is no Warramunga Group basement outcrop within the Licence area.

## 2. WORK DONE

### 2.1 Geochemical lag sampling trial

A trial lag sampling exercise was carried out along a northeast-trending traverse which followed a section of the road from the Warrego mine to the No. 1 water dam. The traverse intersected a magnetic linear feature, as shown in Figure 2.

A total of 31 samples of +6mm to -3mm lag material were taken at 50 metre intervals over a 1.5 kilometre distance and were analysed for gold, copper and bismuth. The results are plotted graphically in Figure 3. The assay results are given in the Appendix.

Although some of the gold results are anomalous, (up to 10 ppb Au), no firm conclusion was drawn from this work because of uncertainties about the depth of transported overburden and the possibility of surface contamination in the area.

### 2.2 Airborne geophysical survey

An airborne magnetic and radiometric survey was flown over the area in May 1993, as part of a district-scale survey covering adjacent ELs 7465, 7686 and 7688, held by the Giants Reef group.

The survey was flown by Austrex International Limited (Job No. 2146). Key specifications were north-south flight lines at a line spacing of 80 metres, with a mean ground clearance of 60 metres. The aircraft was a Cessna 206. Instruments were a Scintrex V2321 split beam cesium vapour magnetometer and a Geometrics 256-channel GR800 spectrometer.

Figure 4 shows the residual magnetic intensity contours over the relinquished block of EL 7686. The most prominent feature is the "high" centred on Explorer 74 within MC's C354 and C355, held by other parties (see Figure 2).

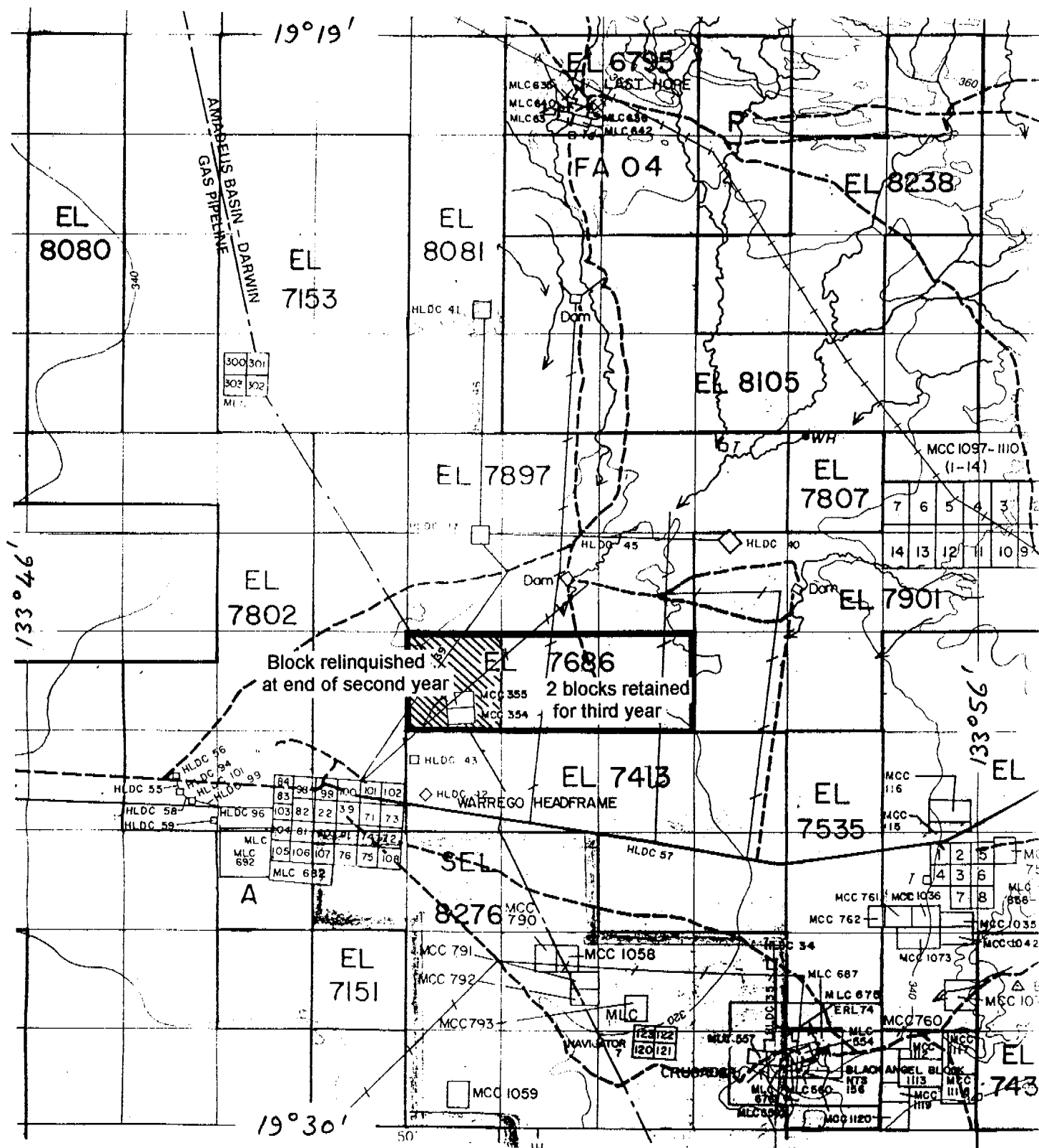
### 3. CONCLUSIONS

Although the lag sampling did not produce clear indications of geochemical anomalies, the strong magnetic feature centred on the Explorer 74 claims suggests that ironstone-related gold/copper mineralisation is a possibility within the block relinquished from EL 7686. For this reason Mineral Claims C1315 to C1323 were applied for over the block prior to the relinquishment date.



P. G. SIMPSON  
EXPLORATION MANAGER

EXPLORATION LICENCE 7686  
"WARREGO EAST"



(March 1994)

TENEMENT LOCATION MAP

Scale 1:100 000

0

5

10km

Base map : NTDME Tenement Map 52/1 Short Range

Figure 1



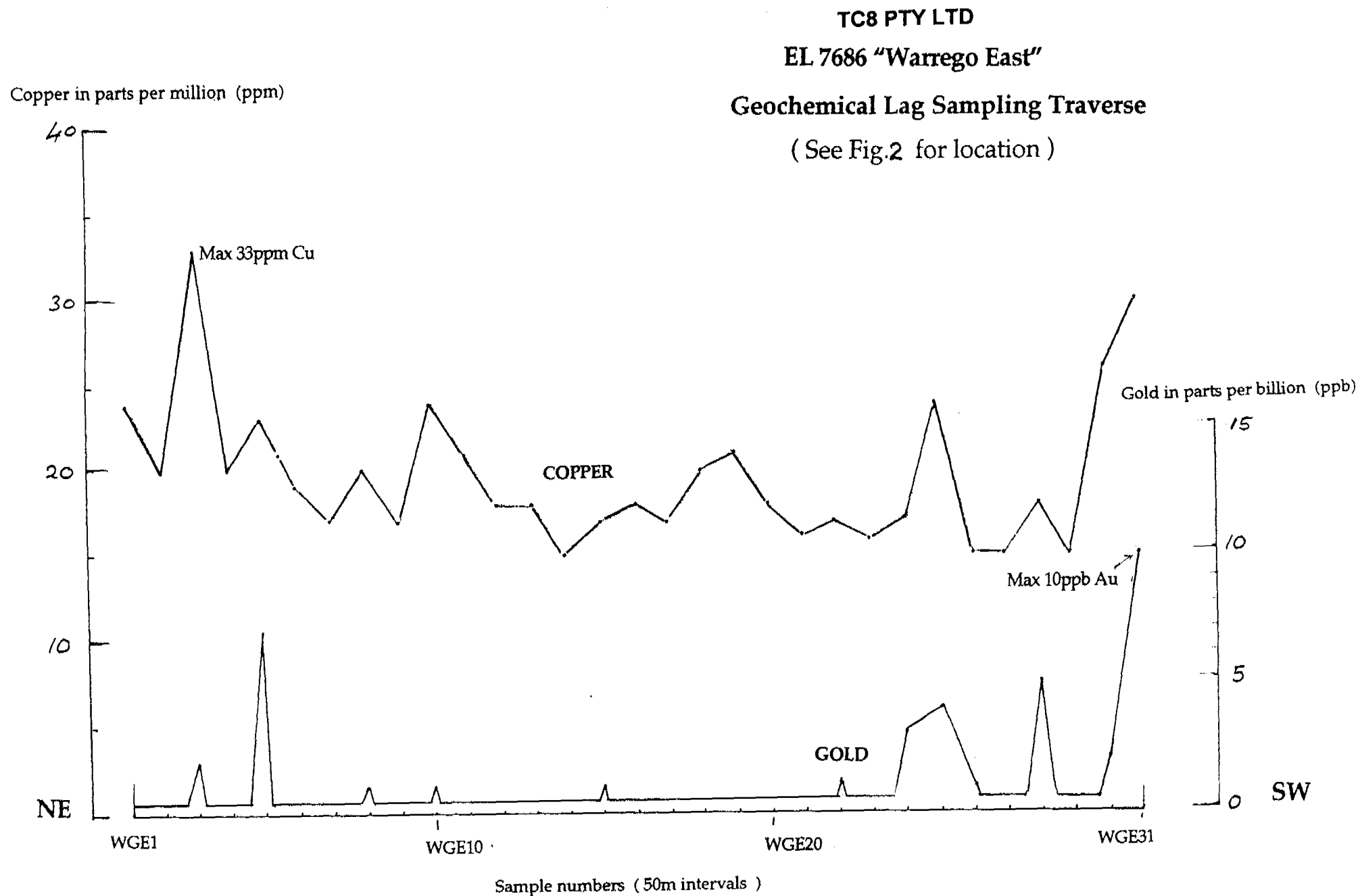
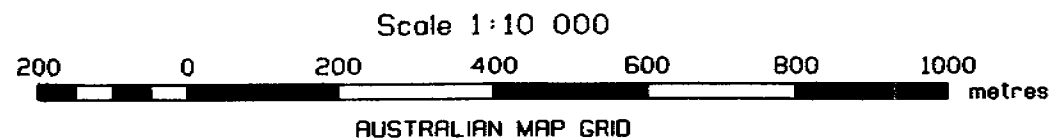
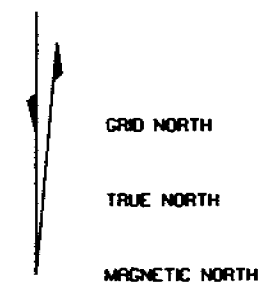


Figure 3



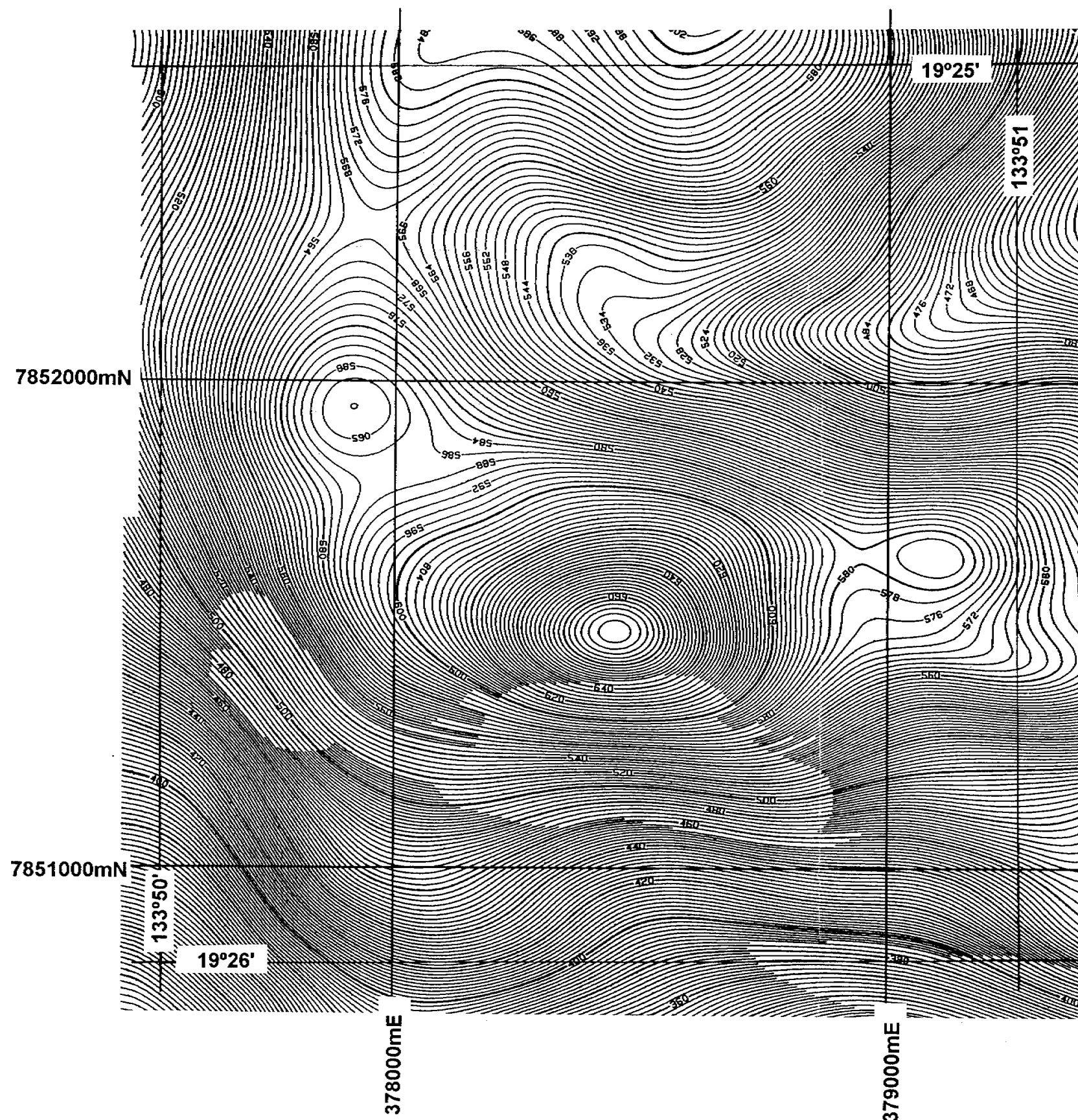


**DATA PROCESSING**  
 GRID CELL SIZE 30 metres  
 CONTOUR INTERVAL 2 nT  
 PARALLAX CORRECTION 0.5 figural  
 REGIONAL FIELD IGRF model 1990 removed



**AIRCRAFT**  
 VH-AZG CESSNA 206  
**MAGNETOMETER**  
 SPLIT BEAM CESIUM SCHNITZER V2321  
 RESOLUTION 0.001 nanoTesla  
 CYCLE RATE 0.1 seconds  
 SAMPLE INTERVAL 6.0 metres  
**SPECTROMETER**  
 256 channel GEOMETRICS GR800  
 VOLUME 33.56 litres  
 CYCLE RATE 1.0 seconds  
 SAMPLE INTERVAL 60 metres  
**DATA ACQUISITION**  
 RMS Multi-channel CHART RECORDER  
 PICODAS PDAS 1000 COMPUTER  
 AERODATA DIGITAL ACQUISITION SYSTEM  
**FLIGHT LINE SPACING**  
 TRAVERSE LINES 80 metres  
 TIE LINES 800 metres  
**FLIGHT LINE DIRECTION**  
 TRAVERSE LINES 180 - 360 degrees  
 TIE LINES 090 - 270 degrees  
**SURVEY HEIGHT**  
 MEAN TERRAIN CLEARANCE - 60 metres  
**NAVIGATION**  
 Using SYLEDIS UHF radio positioning

North point relationships are shown for the centre of the map.  
 Magnetic north is true for 1980.  
 GRID/MAGNETIC ANGLE 4°53'31"  
 GRID CONVERGENCE -0°22'40.67"  
 SECULAR VARIATION 0°0'5" east per year



# GREAT WESTERN AIRBORNE GEOPHYSICAL SURVEY GIANTS REEF MINING N.L.

Surveyed and compiled by AUSTREX INTERNATIONAL LIMITED  
 MAY 1993  
 Job No. 2146  
**austrex**

TC8 PTY LTD  
 EL7686 "WARREGO EAST"  
 BLOCK RELINQUISHED AT END OF SECOND YEAR

**RESIDUAL MAGNETIC  
 INTENSITY CONTOURS**

Figure 4

## **APPENDIX 1**

### **LAG SAMPLE ASSAY RESULTS**

**AMDEL ANALYSIS REPORT 3DN0236**

21 Marjorie Street, Berrimah, Northern Territory  
Postal Address : P.O. Box 58, Berrimah, N.T. 0828  
Telephone: (089) 322 637 Facsimile: (089) 323 531

GIANTS REEF MINING N.L.  
PO BOX 38254  
WINNELLIE

NT 0821

ANALYSIS REPORT :

Your Reference :

Our Reference : 3DN0236

Samples Received : 02/04/93

Results Reported : 06/04/93

Number of Samples : 31

Report Pages : 1 to 1

This report relates specifically to the samples tested in so far as the samples supplied are truly representative of the sample source.


If you have any enquiries please contact the undersigned quoting our reference as above.

Report Codes:

N.A. -Not Analysed

L.N.R. -Listed But Not Received

I.S. -Insufficient Sample



Approved Signature:

for

ALAN CIPLYS  
Manager - Darwin  
AMDEL LABORATORIES LIMITED  
A.C.N. 009 076 555

Final

## ANALYTICAL REPORT

| SAMPLE | Au     | AuDp1  | Cu | Bi  |
|--------|--------|--------|----|-----|
| WGE 01 | <0.001 | --     | 24 | <10 |
| WGE 02 | <0.001 | --     | 20 | <10 |
| WGE 03 | 0.002  | --     | 33 | <10 |
| WGE 04 | <0.001 | --     | 20 | <10 |
| WGE 05 | 0.007  | --     | 23 | <10 |
| WGE 06 | <0.001 | --     | 19 | <10 |
| WGE 07 | <0.001 | --     | 17 | <10 |
| WGE 08 | 0.001  | --     | 20 | <10 |
| WGE 09 | <0.001 | <0.001 | 17 | <10 |
| WGE 10 | 0.001  | --     | 24 | <10 |
| WGE 11 | <0.001 | --     | 21 | <10 |
| WGE 12 | <0.001 | --     | 18 | <10 |
| WGE 13 | <0.001 | --     | 18 | <10 |
| WGE 14 | <0.001 | --     | 15 | <10 |
| WGE 15 | 0.001  | --     | 17 | <10 |
| WGE 16 | <0.001 | --     | 18 | <10 |
| WGE 17 | <0.001 | <0.001 | 17 | <10 |
| WGE 18 | <0.001 | --     | 20 | <10 |
| WGE 19 | <0.001 | --     | 21 | <10 |
| WGE 20 | <0.001 | --     | 18 | <10 |
| WGE 21 | <0.001 | --     | 16 | <10 |
| WGE 22 | <0.001 | --     | 17 | <10 |
| WGE 23 | <0.001 | --     | 16 | <10 |
| WGE 24 | 0.003  | --     | 17 | <10 |
| WGE 25 | 0.004  | --     | 24 | <10 |
| WGE 26 | 0.001  | 0.001  | 15 | <10 |
| WGE 27 | <0.001 | --     | 15 | <10 |
| WGE 28 | 0.005  | --     | 18 | <10 |
| WGE 29 | <0.001 | --     | 15 | <10 |
| WGE 30 | 0.002  | --     | 26 | <10 |
| WGE 31 | 0.010  | --     | 30 | <10 |

|         |       |       |      |      |
|---------|-------|-------|------|------|
| UNITS   | ppm   | ppm   | ppm  | ppm  |
| DET.LIM | 0.001 | 0.001 | 2    | 10   |
| SCHEME  | FA3   | FA3   | AAS2 | AAS2 |