

Otter Gold NL (100%)

TANAMI REGION
NORTHERN TERRITORY

6th ANNUAL REPORT For EXPLORATION LICENCES

ELs 8576, 8727, 8932, 8980 & 9476

(Peccadillo Agreement)

17th FEBRUARY 2003 to 16th FEBRUARY 2004

Volume 1 of 1

Newmont Report No: 31401

Compiled By: M.Muir

DISTRIBUTION:
NT Dept. Business, Industry & Resource Development
Newmont Exploration

The contents of this report remain the property of Otter Gold NL and may not be published in whole or in part nor used in a company prospectus without written consent of the company.

OTTER GOLD NL

TITLE: 6th ANNUAL REPORT FOR EXPLORATION LICENCES
8576, 8727, 8932, 8980 & 9476.

PERIOD: 17th FEBRUARY 2003 to 16th FEBRUARY 2004

REPORT No.: 31401

COMPILED BY: M. MUIR

LOCATION: TANAMI 1:250,000 SE 52-15
THE GRANITES 1:250,000 SF 52-03
PARGEE 1:100,000 4758
McFARLANE 1:100,000 4757

COMMODITY: GOLD

DATE: MARCH 2004

KEYWORDS: COSTS, DOLERITES, PROSPECT GEOLOGY, PROTEROZOIC,
RECONNAISSANCE, REGIONAL GEOLOGY, SEDIMENTARY
GEOLOGY, VEIN DEPOSITS (MAXIMUS PROSPECT).

SUMMARY

The Peccadillo Deed (15/12/97) encompasses Exploration Licences 8576, 8727, 8932, 8980 and 9476, which were granted on 17th February 1998 for a period of six years. The total area covers 238km² and is wholly owned by Otter Gold NL (100%) which is currently operated by Newmont Exploration.

The Peccadillo tenements are located some 50km west of the Tanami Mine. This is the sixth year of tenure. The prospectivity of the Peccadillo Licences is enhanced by the proximity of ML180 (within 10km) where mineral resources have been mined at "Beaver", "Bonsai", "Banjo", "Cheeseman" and "Orion".

During the sixth year of tenure work to be reported concentrated on the Peccadillo group of Licences as part of preparation for a new structural interpretation of the Tanami region. Data review and interpretation continued for the gathering of information for the 2004 budget. Ongoing tenure of these licences by Otter Gold NL means that this report should remain **CLOSED FILE**.

TABLE OF CONTENTS

1.0	INTRODUCTION	1
2.0	LOCATION AND EXPLORATION HISTORY	1
2.1	Location and Access	1
2.2	Tenement Status.....	1
2.3	Exploration History – Otter Gold NL	1
3.0	GEOLOGY	3
3.1	Regional Geology	3
3.2	Local Geology.....	5
4.0	EXPLORATION for 17TH FEB 2003 TO 16TH FEB 2004	6
5.0	EXPENDITURE FOR PERIOD 17/02/2003 TO 16/02/2004.	7
5.1	Expenditure for period 17/02/2003 to 16/02/2004.....	7
6.0	PROPOSED EXPENDITURE 2004-2005	12
7.0	ENVIRONMENT	12
8.0	REFERENCES	13

LIST OF FIGURES

Figure 1 Tenement Location Map

LIST OF TABLES

TABLE 1	Tenement Status
TABLE 2	Comparison of stratigraphic nomenclature
TABLE 3	Expenditure Summary for EL8576 17/02/2003 to 16/02/2004
TABLE 4	Expenditure Summary for EL8727 17/02/2003 to 16/02/2004
TABLE 5	Expenditure Summary for EL8932 17/02/2003 to 16/02/2004
TABLE 6	Expenditure Summary for EL8980 17/02/2003 to 16/02/2004
TABLE 7	Expenditure Summary for EL9476 17/02/2003 to 16/02/2004
TABLE 8	Proposed Expenditures ELs 8576, 8727, 8932, 8980 & 9476 2004-2005

1.0 INTRODUCTION

Exploration Licences (ELs) 8576, 8727, 8932, 8980 & 9476 were granted to Otter Gold NL on the 17th February 1998 for a period of six years.

This report documents the work undertaken by Newmont Exploration on the Peccadillo Licences during the sixth year of tenure.

2.0 LOCATION AND EXPLORATION HISTORY

2.1 Location and Access

The Peccadillo exploration licences are situated approximately 50 km west of the Tanami Mine Site and approximately 10km west of ML180 where mineral resources have recently been mined at Beaver Creek, Bonsai, Banjo, Cheeseman and Orion (Figure 1). Together these leases cover 260 square kilometres (81 blocks). Primary access is via the Tanami Road and Newmont Explorations' 'Wilson's Track'.

2.2 Tenement Status

Collectively referred to as Peccadillo, Exploration Licences 8576, 8727, 8932, 8980 and 9476 were granted to Otter Gold NL (100%) on 17th February 1998 for six years as part of The Peccadillo Deed (15/12/97).

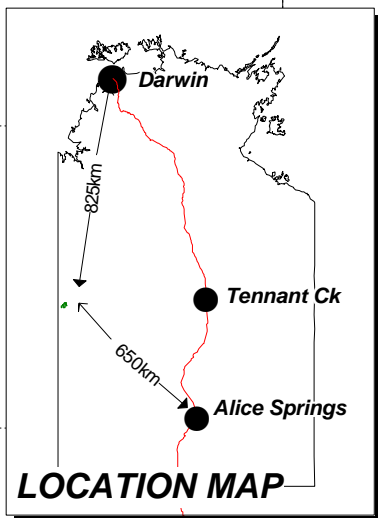
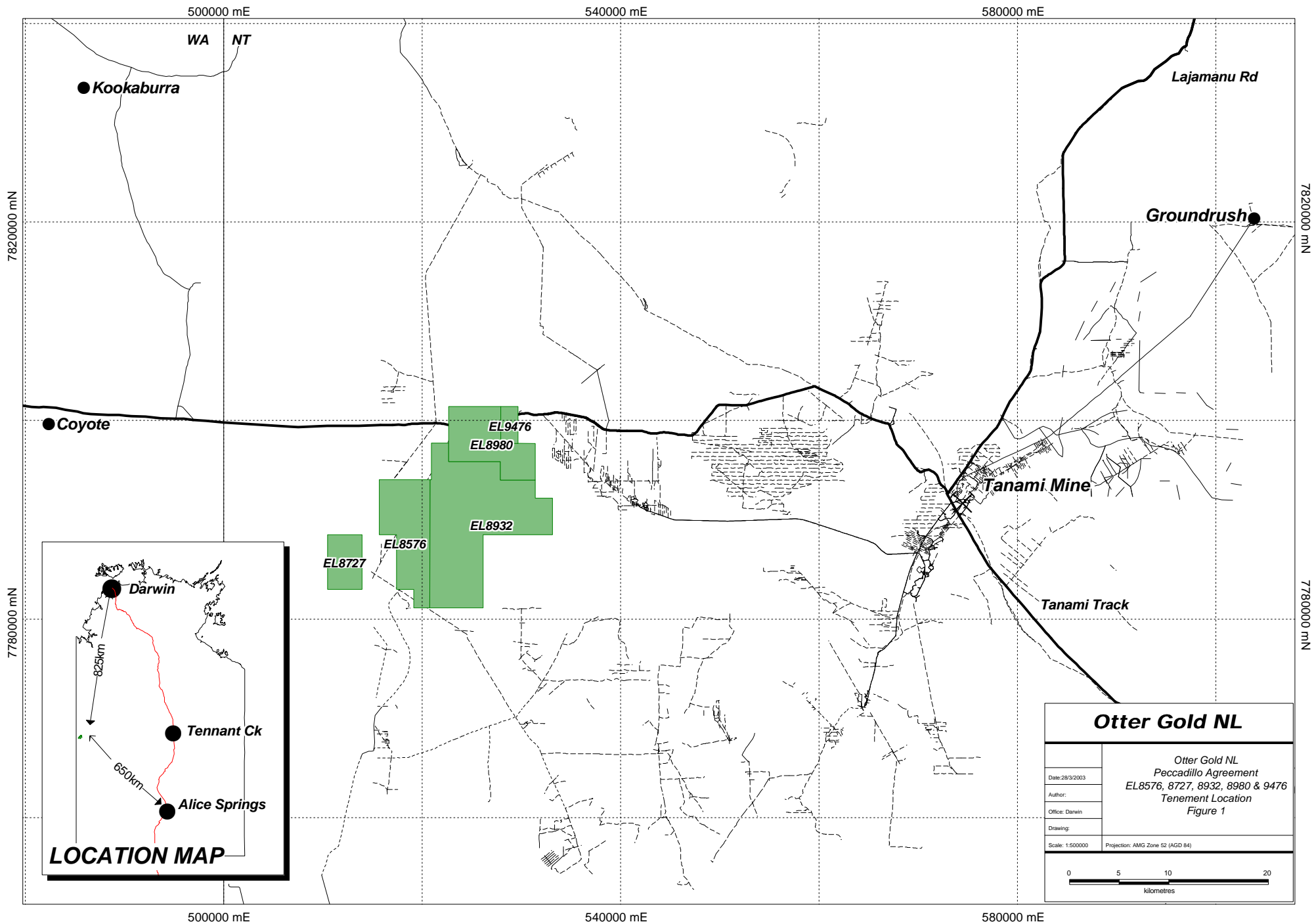
Tenement (EL)	Tenure	Blocks	Km²	Covenant YE 16/02/2004	Rent YE 16/02/2004
8576	6/6	16	51	\$8,000	\$2,816
8727	6/6	6	19	\$2,200	\$1,056
8932	6/6	44	142	\$12,000	\$7,744
8980	6/6	13	42	\$2,500	\$2,288
9476	6/6	2	6	\$3,000	\$352

TABLE 1: Tenement Status

2.3 Exploration History – Otter Gold NL

1998 – 1999: During the first year of exploration delays were encountered with arranging and conduction sacred site clearances within the areas. Clearance procedures were completed with the expectation of commencing work in the 1999 field season. Geophysical Surveys and interpretation were completed of the five Exploration Licences.

1999 – 2000: Second year work programmes included a regional helicopter surface sample programme (400m x 400m), infill programmes (100m x100m) and line sampling at 50m spacing with a high of 28.1ppb Au and 24.5ppb Au being recorded.



Otter Gold NL	
Otter Gold NL Peccadillo Agreement EL8576, 8727, 8932, 8980 & 9476 Tenement Location Figure 1	
Date: 28/3/2003	
Author:	
Office: Darwin	
Drawing:	
Scale: 1:500000	Projection: AMG Zone 52 (AGD 84)
0 5 10 20 kilometres	

2000 – 2001: Work was extensive during this year with widespread infill surface sampling across the Maximus region and Angle RAB used to define the targets produced. Rockchipping was undertaken with a maximum result of 100g/t Au +. Walkabout posthole was completed over at least five of the Licences determining deep cover in the eastern region of EL 8932 & EL 8980. Shallow cover was confirmed on the western licences even with an alluvial channel defined. Smaller surface sampling programmes were completed to the north of Maximus along the unconformity and outlined potential targets within the Killi Killi sediments with a pyritic component.

2001 – 2002: During the fourth year of tenure work focussed on the remote analysis of geophysical data with the use of the Fractal Graphics method for enhanced multi scale edge analysis (worming) of these regions. The resulting data was analysed for potential targets. An area of interest was discerned within fairly tightly folded Killi Killi Beds adjacent to EL 8932/EL8576.

2002 – 2003: Fifth year work programme were put on hold within these regions due to minimal staff being assigned to the Tanami region. Other regions were designated as higher priority targets and thus attention. The takeover of Otter Gold NL by Normandy NFM/Newmont also pushed the field season back with the uncertainty of staff positions and budgets.

3.0 GEOLOGY

3.1 Regional Geology

The Granites – Tanami Block is bounded to the west by the Canning Basin, and to the east by the Wiso Basin and is considered to be one of the western most Palaeoproterozoic inliers of the Northern Australian Orogenic Province. The block is thought to have developed around the Barramundi Orogeny – major event 1845 – 1840 Ma (Blake et al., 1979).

The stratigraphy of the Tanami Region has been revised as a result of an intensive study recently completed by the NTGS (Hendrickx et al., 2000). The stratigraphy outlined by Blake et al (1979) has had some significant modifications (Table 2).

The Archaean Billabong Complex and Browns Range Metamorphics are the oldest rocks in the area. Browns Range Metamorphics comprise granitic gneiss and muscovite schist intruded by fine-grained granite, thin granitic sills, aplite and pegmatite. The Billabong Complex comprises banded granitic gneiss, which are generally elongated and fault bound.

Lying unconformably above the Archaean basement is the Palaeoproterozoic McFarlane Peak Group. These rocks are characterised by a thick sequence of mafic volcanic, volcanoclastic and clastic sedimentary rocks, which possess a distinctive magnetic and gravity signature. This package of rocks is structurally complex and is considered to have a tectonic contact with the overlying Tanami Group.

Blake et al (1979)						Hendrickx et al (2000)		
Birrindudu Group		Coomarie Sandstone				Birrindudu Group	Coomarie Sandstone	Suplejack Downs Sandstone
		Talbot Well Formation					Talbot Well Formation	
		Gardiner Sandstone					Gardiner Sandstone	
Suplejack Downs Sandstone						Nanny Goat Creek Volcanics Mount Winnecke Group Mount Charles Formation Pargee Sandstone		
Mount Winnecke								
Pargee Sandstone								
Tanami Complex	Mt. Charles Beds	Killi Killi Beds	Nanny Goat Creek Beds	Nongra Beds	Helena Creek Beds	Tanami Group	Killi Killi Formation Twigg Formation Dead Bullock Formation	
							McFarlane Peak Group	
Archaean						Browns Range Metamorphics “Billabong Complex”		

TABLE 2. Comparison of stratigraphic nomenclature (Hendrickx et al, 2000).

The Tanami group is subdivided into three formations:

Twigg Formation: purple siltstone with minor sandstone and chert
 Killi Killi Formation: turbiditic sandstone
 Dead Bullock Formation: siltstone, mudstone, chert and banded iron formation

The Dead Bullock Formation occurs at the base of the Tanami Group and is dominated by fine-grained sedimentary rocks. The rocks outcrop at Dead Bullock Soak, Lightning Ridge and Officer Hill. At the Granites the rocks have been metamorphosed to amphibolite facies to form andalusite, garnet and hornblende bearing schists. The Dead Bullock formation is host to significant gold mineralisation at the Granites and Dead Bullock Soak.

The Killi-Killi Formation conformably overlies the Dead Bullock Formation and is the most extensive formation in the group. The sequence of turbidites includes micaceous greywacke, quartzwacke, and lithic greywacke, quartz arenite and lithic arenite, interbedded with siltstone, mudstone and occasional thin chert beds. Detrital mica is a characteristic feature. The Killi-Killi is metamorphosed to lower greenschist facies and is interpreted to be up to 4km thick.

The Twigg formation is confined to a narrow package of rocks immediately west of the Tanami Mine corridor. It comprises a sequence of interbedded purple siltstone with thin-bedded chert and minor medium bedded greywacke.

The Pargee Sandstone unconformably overlies the Tanami Group and is exposed on the western side of the Coomarie Dome extending into Western Australia. The Pargee Sandstone comprises thick-bedded quartz arenite, lithic arenite and conglomerate with pebbly sandstone and conglomerate at the base.

The Mount Charles Formation comprises an intercalated package of basalts and turbiditic sediments, which occur on the western side of the Frankenia Dome. The Mount Charles Formation is host to structurally controlled vein hosted gold mineralisation in the Tanami Mine Corridor. Sediments include sandstone, mudstone, carbonaceous mudstones and intraclast conglomerate. Basalts are predominantly massive units with pillow basalts and basaltic breccias also evident.

The Mt Winnecke Group is also interpreted to lie unconformably over the Tanami Group and is divided into two units - siliciclastic sediments and felsic volcanics.

The Nanny Goat Volcanics are characterised by extrusive volcanic rocks including quartz-feldspar ignimbrite, feldspar ignimbrite, rhyolite lava, basalt and minor siliciclastic sediments.

The Birrindudu group comprises 3 units with Gardiner Sandstone at the base, overlain by Talbot Well Formation and Coomarie Sandstone. The Suplejack Down sandstone is interpreted to belong to this group but its relationship is unclear. The Birrindudu group lie unconformably over the Browns Range Metamorphics, MacFarlane Peak Group, Tanami Group, Pargee Sandstone, Nanny Goat Creek Volcanics and Mount Winnecke Group.

Cenozoic laterite, silcrete, calcrete, and Quaternary debris cover 60 – 70% of the Tanami Desert. The Quaternary sediments are generally unconsolidated, representing the most recent phase of erosion and deposition of sands, gravels and lithic fragments.

3.2 Local Geology

The local geology comprises primarily of Kill Killi Beds and Pargee Sandstone. The Kill Killi Beds are characteristically micaceous to phyllitic sandstones. The Pargee Sandstone lies unconformably over the Killi Killi Beds and comprises of sub lithic to lithic arenites, cross-bedded; minor conglomerate and lithic greywacke. Outcropping Pargee Sandstone is folded into a series of NW-SE trending antiforms and synforms which plunge to the north west.

The Peccadillo group of tenements lies approximately five kilometres north of the major WNW-ESE trending Trans-Tanami Structure. Several north west trending splays pass through western edge of the Leases. The Peccadillo region has a low magnetic response due to the nature of the Killi Killi and Pargee sediments. To the south of the tenements dolerites have been noted from geophysical interpretation and it is hoped these extend to just west of the Maximus prospect – drilling is required to test their viability as potential hosts as they appear to be under cover. Outcropping regions north and south of the Maximus prospect have been investigated. The contact between the Pargee sandstone and the Killi Killi Beds has provided a conduit for fluids – with pyritic sediments being noted to the north of Maximus. Anomalism is

indicated along the north – south unconformity however it appears to be a case of what you see is what you get – with the 10 + ppb Au outcropping. There are extensive plains of quartz float on the west of the Pargee Range.

4.0 EXPLORATION for 17TH FEBRUARY 2003 TO 16TH FEBRUARY 2004

Work within the Peccadillo group of Licences concentrated on interpretation and mapping as part of preparation for a new structural interpretation of the Tanami region by ‘GRU’ (Brett Davies) – as part of a major strategic review of the Tanami Region.

Antony Coote (Petrologist) also prepared a database of all petrological samples taken by Otter Gold in Mapinfo Format for the strategic review. A database of the quartz vein types in the Tanami Region was also prepared.

Data review and interpretation continued for the gathering of information for the 2004 budget.

5.0 EXPENDITURE FOR PERIOD 17/02/2003 TO 16/02/2004.**5.1 Expenditure for period 17/02/2003 to 16/02/2004****TABLE 3 Expenditure Summary for EL8576 17/02/2003 to 16/02/2004**

EL8576	Actual YTD	Admissible Costs
800001 Proj/Explorn labour	9,600.00	9,600.00
839001 Sal & Wages Allocat	0	0
840000 Employee Cost Allo	427.39	427.39
* Expln Employee Costs	10,027.39	10,027.39
520600 Couriers & Bulk Mai	44.64	44.64
520680 Stationery and Supp	245.09	245.09
520685 Telephone & Fax	77.35	77.35
839003 Regnl Office Alloc	55.08	55.08
840007 Expln Other Alloc	26.62	26.62
* Expl Overheads and Alloca	448.78	448.78
512010 Safety Clothing	133.87	133.87
520082 Minor Capital Expen	643.80	643.80
520085 Maintenance	758.60	758.60
520086 Maintenance - Vehcl	1,219.15	1,219.15
520635 Publications & Subs	0	0
520681 Radio Communication	259.10	259.10
520920 Travel & Accom Loca	363.96	363.96
520925 Travel & Accom Osea	182.19	182.19
550020 Consum. - General	22.73	22.73
550999 Consum-Direct Purch	1,610.38	1,610.38
556095 Spares - Tyres/Tube	354.03	354.03
561020 IT Infrass Hardware	(643.80)	(643.80)
562015 Vehicle Registratio	650.75	650.75
840002 Trav & Accom Allo	6.86	6.86
840003 Draft & IT Alloc	62.15	62.15
840005 Equip & Veh Alloc	2.70	2.70
* Expln Operating Costs	5,626.47	5,626.47
521001 TLO - Comp Payments	4,000.00	
521002 TLO - Agrmt Complia	2,442.35	
521010 Legal Fees - Non De	65.31	
560040 Tenement Fees	75.00	
542300 Asset Acquisitions	0	
560042 Tenement Rentals	10,240.00	
840006 Ten/Legal Cost Allo	17.79	
* Expln Tenement Costs	16,840.45	
550030 Consum. - Drilling	0	0
* Expln Drilling Costs	0	0
513000 Consultants - Gen.	5,744.79	5,744.79
840001 Cont & Consul Allo	29.71	29.71
* Expln Specialist Services	5,774.50	5,774.50
** Cost element group	38,717.59	21,877.14
Covenant		\$8,000

TABLE 4 Expenditure Summary for EL8727 17/02/2003 to 16/02/2004

EL8727	Actual YTD	Admissible Costs
511020 Learning & Develop	1,866.36	1,866.36
800001 Proj/Explorn labour	15,682.00	15,682.00
840000 Employee Cost Allo	427.39	427.39
* Expln Employee Costs	17,975.75	17,975.75
520600 Couriers & Bulk Mai	88.65	88.65
520685 Telephone & Fax	196.80	196.80
839003 Regnl Office Alloc	0	0
840007 Expln Other Alloc	26.62	26.62
* Expl Overheads and Alloca	312.07	312.07
510000 Accom & Messing	93.09	93.09
511015 Staff Amenities	97.68	97.68
512010 Safety Clothing	133.87	133.87
512020 Fire Systems and Ex	240.39	240.39
520086 Maintenance - Vehcl	1,175.79	1,175.79
520635 Publications & Subs	0	0
520900 Travel - Air Charte	916.44	916.44
520920 Travel & Accom Loca	5,247.90	5,247.90
520925 Travel & Accom Osea	182.19	182.19
550020 Consum. - General	22.73	22.73
550999 Consum-Direct Purch	105.72	105.72
556095 Spares - Tyres/Tube	603.64	603.64
561025 IT Maintenance Hard	1,672.67	1,672.67
840002 Trav & Accom Allo	6.86	6.86
840003 Draft & IT Alloc	62.15	62.15
840005 Equip & Veh Alloc	2.70	2.70
* Expln Operating Costs	10,563.82	10,563.82
521001 TLO - Comp Payments	4,000.00	
521002 TLO - Agrmt Complia	2,442.35	
521005 Legal Fees - Deduct	5,654.41	
521010 Legal Fees - Non De	65.31	
560040 Tenement Fees	75.00	
542300 Asset Acquisitions	0	
560042 Tenement Rentals	3,840.00	
840006 Ten/Legal Cost Allo	17.79	
* Expln Tenement Costs	16,094.86	
550030 Consum. - Drilling	0	0
* Expln Drilling Costs	0	0
513000 Consultants - Gen.	8,457.50	8,457.50
513030 Consultants - Petro	1,065.08	1,065.08
840001 Cont & Consul Allo	29.71	29.71
* Expln Specialist Services	9,552.29	9,552.29
** Cost element group	54,498.79	38,403.93
Covenant		2200

TABLE 5 Expenditure Summary for EL8932 17/02/2003 to 16/02/2004

EL8932	Actual YTD	Admissible Costs
511020 Learning & Develop	1,401.32	1,401.32
512005 Medical Examination	130.54	130.54
800001 Proj/Explorn labour	13,626.00	13,626.00
840000 Employee Cost Allo	427.39	427.39
* Expln Employee Costs	15,585.25	15,585.25
520600 Couriers & Bulk Mai	507.29	507.29
520680 Stationery and Supp	52.80	52.80
840007 Expln Other Alloc	26.62	26.62
* Expl Overheads and Alloca	586.71	586.71
510000 Accom & Messing	2,269.98	2,269.98
512000 First Aid/Safety	70.46	70.46
512010 Safety Clothing	135.80	135.80
520085 Maintenance	34.23	34.23
520086 Maintenance - Vehcl	1,140.09	1,140.09
520635 Publications & Subs	0	0
520681 Radio Communication	308.54	308.54
520920 Travel & Accom Loca	5,776.31	5,776.31
520925 Travel & Accom Osea	182.19	182.19
550020 Consum. - General	22.72	22.72
550999 Consum-Direct Purch	721.42	721.42
840002 Trav & Accom Allo	6.86	6.86
840003 Draft & IT Alloc	62.15	62.15
840005 Equip & Veh Alloc	2.70	2.70
* Expln Operating Costs	10,733.45	10,733.45
521001 TLO - Comp Payments	4,000.00	
521002 TLO - Agrmt Complia	2,442.35	
521005 Legal Fees - Deduct	3,644.39	
521010 Legal Fees - Non De	866.01	
560040 Tenement Fees	75.00	
542300 Asset Acquisitions	0	
560042 Tenement Rentals	28,160.00	
840006 Ten/Legal Cost Allo	17.79	
* Expln Tenement Costs	39,205.54	
513000 Consultants - Gen.	7,587.50	7,587.50
840001 Cont & Consul Allo	29.71	29.71
* Expln Specialist Services	7,617.21	7,617.21
** Cost element group	73,728.16	34,522.62
Covenant		12000

TABLE 6 Expenditure Summary for EL8980 17/02/2003 to 16/02/2004

EL8980	Actual YTD	Admissible Costs
511020 Learning & Develop	813.19	813.19
512005 Medical Examination	130.54	130.54
800001 Proj/Explorn labour	12,600.00	12,600.00
840000 Employee Cost Allo	427.39	427.39
* Expln Employee Costs	13,971.12	13,971.12
520600 Couriers & Bulk Mai	686.17	686.17
520680 Stationery and Supp	14.40	14.40
839003 Regnl Office Alloc	88.78	88.78
840007 Expln Other Alloc	26.62	26.62
* Expl Overheads and Alloca	815.97	815.97
510000 Accom & Messing	1,413.82	1,413.82
520082 Minor Capital Expen	628.50	628.50
520086 Maintenance - Vehcl	525.91	525.91
520605 Furnitre/Equip <\$50	53.00	53.00
520635 Publications & Subs	94.07	94.07
520920 Travel & Accom Loca	2,777.89	2,777.89
520925 Travel & Accom Osea	181.93	181.93
550020 Consum. - General	22.73	22.73
550065 Consum. - Oil/Greas	310.76	310.76
550999 Consum-Direct Purch	65.91	65.91
556095 Spares - Tyres/Tube	305.00	305.00
840002 Trav & Accom Allo	6.86	6.86
840003 Draft & IT Alloc	62.15	62.15
840005 Equip & Veh Alloc	2.70	2.70
* Expln Operating Costs	6,451.23	6,451.23
521001 TLO - Comp Payments	4,000.00	
521002 TLO - Agrmt Complia	2,442.36	
521005 Legal Fees - Deduct	539.00	
521010 Legal Fees - Non De	59.37	
560040 Tenement Fees	75.00	
542300 Asset Acquisitions	0	
560042 Tenement Rentals	8,320.00	
840006 Ten/Legal Cost Allo	17.79	
* Expln Tenement Costs	15,453.52	
513000 Consultants - Gen.	2,314.68	2,314.68
840001 Cont & Consul Allo	29.71	29.71
* Expln Specialist Services	2,344.39	2,344.39
** Cost element group	39,036.23	23,582.71
Covenant		2500

TABLE 7 Expenditure Summary for EL9476 17/02/2003 to 16/02/2004

EL9476	Actual YTD	Admissible Costs
511020 Learning & Develop	493.18	493.18
520055 Conferences and Sem	200.23	200.23
520155 Temporary Staff	2,500.00	2,500.00
800001 Proj/Explorn labour	9,190.00	9,190.00
840000 Employee Cost Allo	427.39	427.39
* Expln Employee Costs	12,810.80	12,810.80
520600 Couriers & Bulk Mai	5.01	5.01
520680 Stationery and Supp	18.16	18.16
839003 Regnl Office Alloct	12.68	12.68
840007 Expln Other Alloc	26.62	26.62
* Expl Overheads and Alloca	62.47	62.47
512000 First Aid/Safety	70.46	70.46
512010 Safety Clothing	139.65	139.65
512020 Fire Systems and Ex	240.39	240.39
520082 Minor Capital Expen	419.00	419.00
520085 Maintenance	34.22	34.22
520086 Maintenance - Vehcl	512.05	512.05
520400 Donations - Deducti	209.91	209.91
520635 Publications & Subs	0	0
520920 Travel & Accom Loca	1,338.44	1,338.44
550020 Consum. - General	22.73	22.73
550065 Consum. - Oil/Greas	140.00	140.00
550999 Consum-Direct Purch	1,190.89	1,190.89
556095 Spares - Tyres/Tube	370.85	370.85
570025 Freight	25.00	25.00
840002 Trav & Accom Allo	6.86	6.86
840003 Draft & IT Alloc	62.15	62.15
840005 Equip & Veh Alloc	2.70	2.70
* Expln Operating Costs	4,785.30	4,785.30
521001 TLO - Comp Payments	4,000.00	
521002 TLO - Agrmt Complia	2,442.38	
521010 Legal Fees - Non De	65.31	
560040 Tenement Fees	75.00	
542300 Asset Acquisitions	0	
560042 Tenement Rentals	1,280.00	
840006 Ten/Legal Cost Allo	17.79	
* Expln Tenement Costs	7,880.48	
550030 Consum. - Drilling	0	0
* Expln Drilling Costs	0	0
513000 Consultants - Gen.	4,504.63	4,504.63
840001 Cont & Consul Allo	29.71	29.71
* Expln Specialist Services	4,534.34	4,534.34
** Cost element group	30,073.39	22,192.91
Covenant		3000

6.0 PROPOSED EXPENDITURE 2004-2005

Within the Peccadillo Agreement Region there lie several untested possibilities for districts of anomalism, especially under cover. There remain good possibilities within dolerites and the prospective Killi Killi Beds of further discovery. All the tenements are deemed to be under explored (with the exception of the Maximus prospect in EL8932) with the majority of areas only having first pass, regional scale surface sampling.

Work in these regions should involve a review of available data by new staff and assessment of existing targets. Site visits are recommended to any potential targets. If the targets are thought suitable for testing then a base programme of patterned posthole/surface sampling (using the Newmont NFM proprietary technique BLEG) will be used to test the targets validity.

Pending promising results we envisage that at least one target will be generated for angle RAB drilling.

Work will also continue with the major strategic review of the Tanami which will include the Peccadillo group of tenements.

TABLE 8 Proposed Expenditure Summary for the Peccadillo Agreement 2004-2005

Licence	8576	8727	8932	8980	9476
Proposed Expenditure	\$9000	\$4200	\$12000	\$3500	\$4000

7.0 ENVIRONMENT

Environmental disturbance has been kept to a minimum wherever possible through the last five years. Mature trees were not disturbed and trimming of vegetation was limited to small bushes and grasses in order to obtain line of sight in gridding. All drill pads were cleared by hand and holes plugged with concrete plugs and back-filled. All rubbish was removed from sites.

Otter Gold NL has maintained an ongoing commitment to rehabilitation, and has undertaken the following tasks:

- 1) collected sample bags;
- 2) capped and backfilled drill holes;
- 3) backfilled all sumps and mine excavations,
- 4) removed all debris and drilling consumables,
- 5) restricted access to drill sites.

8.0 REFERENCES

Blake D.H., Hodgson I.M., and Muhling, P.C., 1979. Geology of the Granites-Tanami Region, Northern Territory and Western Australia. Bull. 197, Bureau of Mineral Resources, Geology and Geophysics.

Burgess, H & Mohammed, L., 1ST Annual Report for EL's 8576,8727, 8932, 8980 and 9476 - Peccadillo, Year Ending 16th February 1999. Otter Gold NL NTDME Annual Report.

Burgess, H., 2nd Annual Report for EL's 8576,8727, 8932, 8980 and 9476 - Peccadillo, Year Ending 16th February 2000. Otter Gold NL NTDME Annual Report.

Hendrickx M.A., Slater K.R., Crispe A.J., Dean A.A., Vandenberg L.C., and Smith J.B., 2000. Palaeoproterozoic stratigraphy of the Tanami Region: regional correlations and relation to mineralisation – preliminary results. Northern Territory Geological Survey. Geological Survey Record GS 2000-13.

Mohammed, L., 3rd Annual Report for EL's 8576,8727, 8932, 8980 and 9476 - Peccadillo, Year Ending 16th February 2001. Otter Gold NL NTDME Annual Report.

Muir, M., 4th Annual Report for EL's 8576, 8727, 8932, 8980 and 9476 - Peccadillo, Year Ending 16th February 2002. Otter Gold NL NTDME Annual Report.

Muir, M., 5th Annual Report for EL's 8576, 8727, 8932, 8980 and 9476 - Peccadillo, Year Ending 16th February 2003. Otter Gold NL NTDME Annual Report.