

METANA MINERALS N.L.

Allender/Lebrun Joint Venture

EXPLORATION LICENCE 5726

"WHIPPET EAST"

SUMMARY REPORT ON EXPLORATION
FOR THE PERIOD BETWEEN 10th MARCH 1988
TO
1st MARCH 1989

Geological 1:250,000 Tennant Creek Sheet

CR89/271

Compiled by
A.H. Eeles
Project
Geologist
7/3/89

OPEN FILE

1. SUMMARY

The only work that has been conducted on this tenement is the interpretation of the aeromagnetic data and an inspection of aerial photographs.

2. RECOMMENDATIONS

Reconnaissance bedrock drilling should be undertaken to investigate the suitability of soil sampling and to investigate the underlying rock type.

CONTENTS

	Page
1. SUMMARY	1
2. RECOMMENDATIONS	1
3. CONTENTS	2
4. LOCATION	3
5. TENURE	3
6. REGIONAL GEOLOGY	3
7. PHOTOGEOLOGICAL INTERPRETATION	3
8. AEROMAGNETIC INTERPRETATION	3

LIST OF FIGURES

Figure 1 Location Plan
1:100,000

Figure 2 Regional Geology Map
(After B.T. Williams)

Figure 3 Aeromagnetic Interpretation
1:100,000

4. LOCATION

The Exploration Licence is located about 39.5 kilometres north north east of the Tennant Creek township and covers a total area of about 3.42 square kilometres. (See fig. 1).

5. TENURE

Exploration Licence 5726 (Whippet East) is held by Metana Minerals N.L. has been explored by Metana Minerals N.L. under a joint venture agreement with Jim Allender and Tony Lebrun. The Exploration Licence was granted on the 10th June, 1988, and has an annual minimum expenditure commitment of \$ 2,000.

6. REGIONAL GEOLOGY

The regional geology will not be repeated here as it has been adequately described in numerous previous publications. For example the Geological Survey, 1:250,000 series Tennant Creek Sheet explanatory notes. Figure 2 shows a regional geology map taken from Le Messurier et al, "The Tennant Creek Inlier : Regional Geology and Mineralisation": in Economic Geology of Australia and Papua New Guinea - Metals. In Press.

7. PHOTOGEOLOGICAL INTERPRETATION

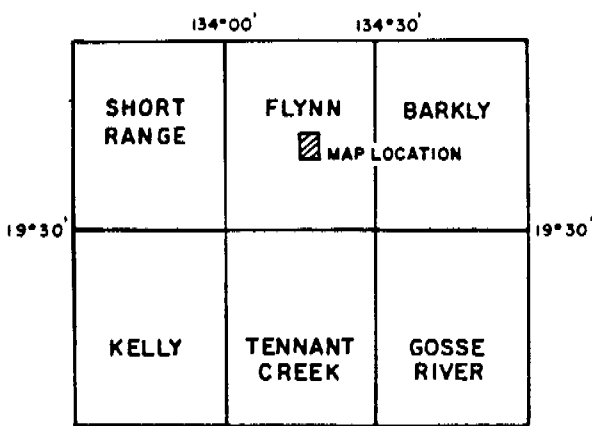
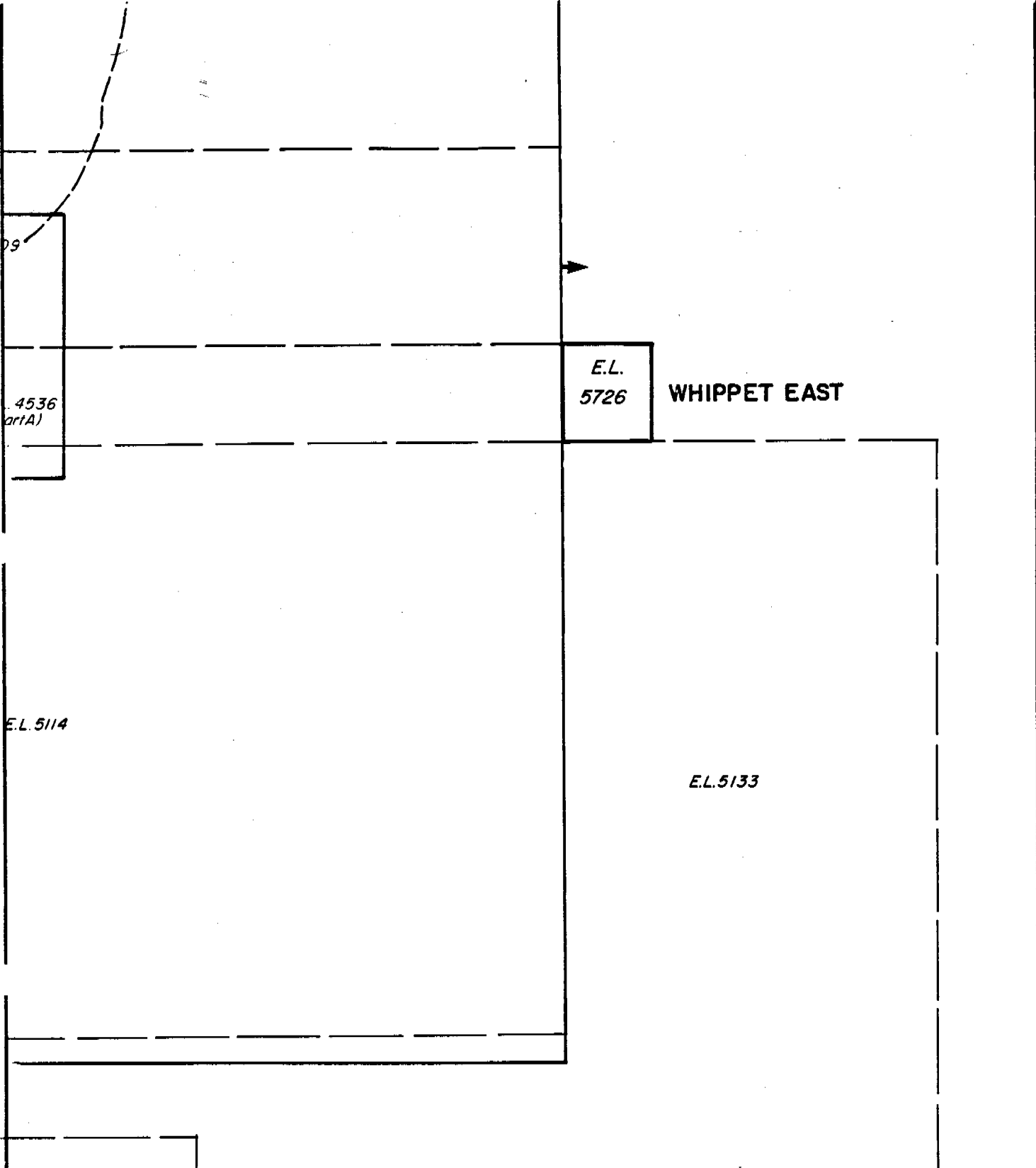
Photogeological examination has shown there to be no outcrop within the Exploration Licence. No interpretation has been attempted. The ground is thought to be underlain by rocks of the Warramunga Group.

8. AEROMAGNETIC INTERPRETATION

A geophysical interpretation was made on the data that was supplied to the company by Austirex International Limited. An airborne geophysical survey was conducted by Austirex between June & July 1984. The flight lines were spaced by 200 metres, with tie lines separated by 4000 metres. A proton precession magnetometer was used for data collection. This had a resolution of 0.1 nano Tesla, a cycle rate of 0.5 seconds and a sample interval of 30 metres.

Metana has purchased and re-interpreted the data. The aeromagnetic interpretation has delineated an east-west trending magnetic sedimentary unit. These rocks probably belong to the Bernborough Formation (C.F. Warramunga Group). (Fig 3.)

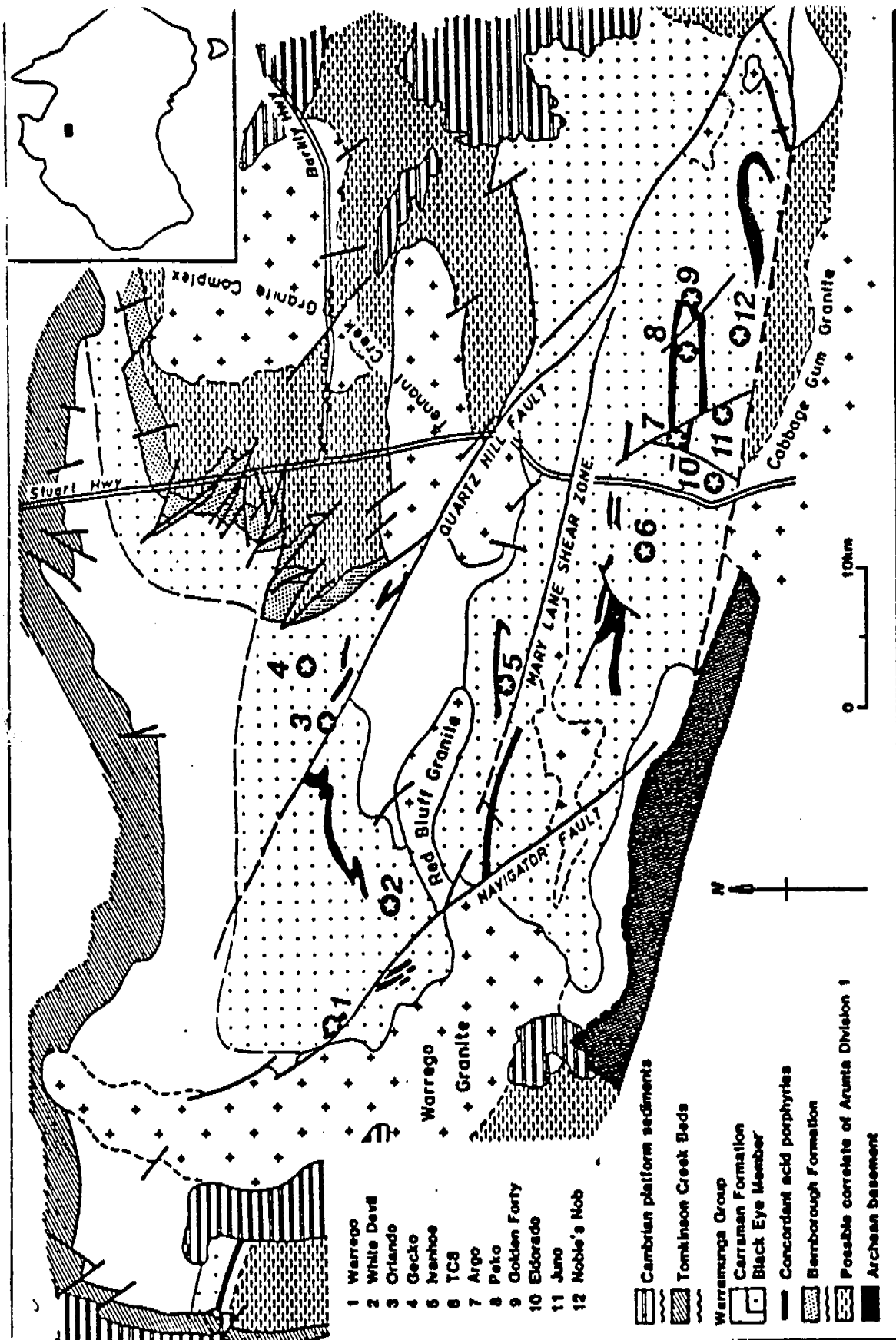
A.H. Eeles
7/3/89



NATIONAL 1:100,000 SHEET INDEX



TENNANT CREEK PROJECT		
WIPPET EAST EL 5726		
LOCATION PLAN		
Scale 1:100000	Date NOV.1988	Plan N° 1
METANA MINERALS N.L.		



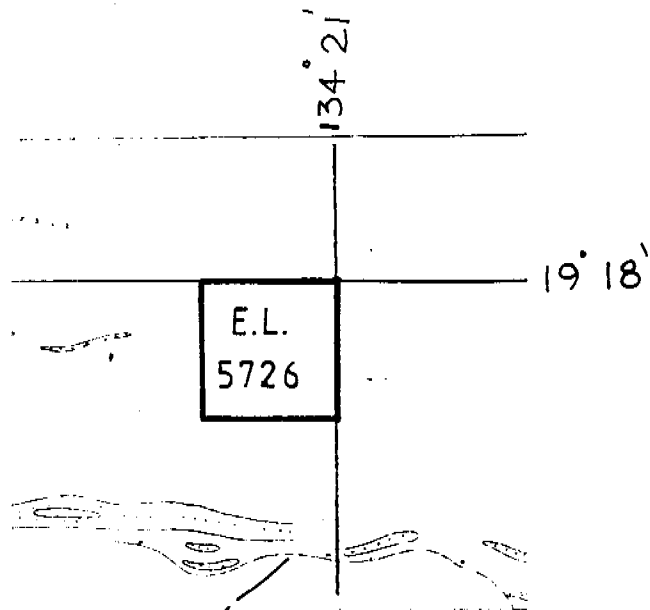
TENNANT CREEK

REGIONAL GEOLOGICAL MAP

From LeMessurier et al. — ECONOMIC GEOLOGY
OF AUSTRALIA and PAPUA NEW GUINEA
METAL. IN PRESS

PREPARED:	DRAWN:	SCALE:	FIGURE No. 2
DRAFTED:	REVISED:	DWG.No.	

METANA MINERALS N.L.



TENNANT CREEK PROJECT

E.L. 5726

WHIPPET EAST

AEROMAGNETIC INTERPRETATION

Scale. 1:100 000

Date

Figure 3

METANA MINERALS N.L.