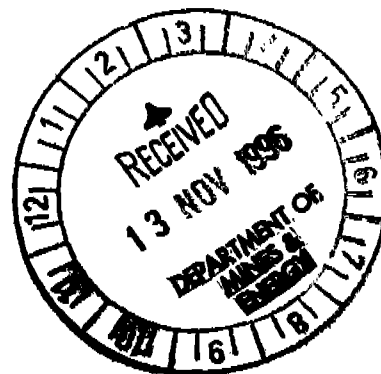


OPEN FILE

1ST ANNUAL REPORT

26/9/95 to 25/9/96

EL 8894



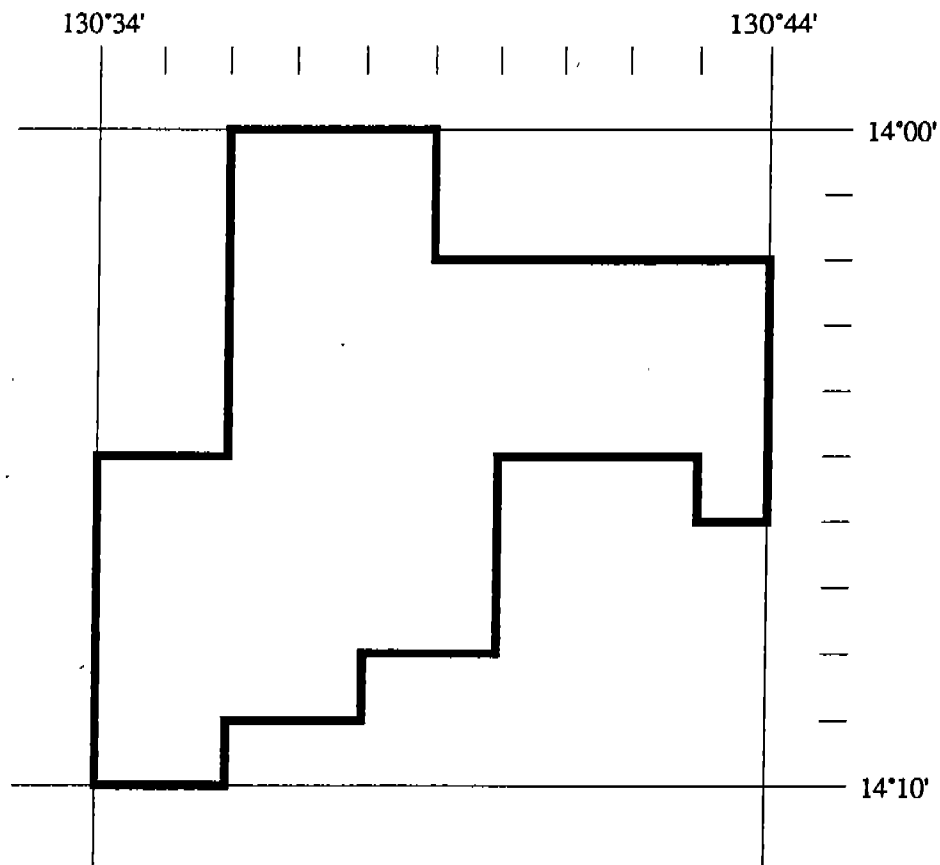
WINGATE MOUNTAINS

BY

R M BIDDLECOMBE

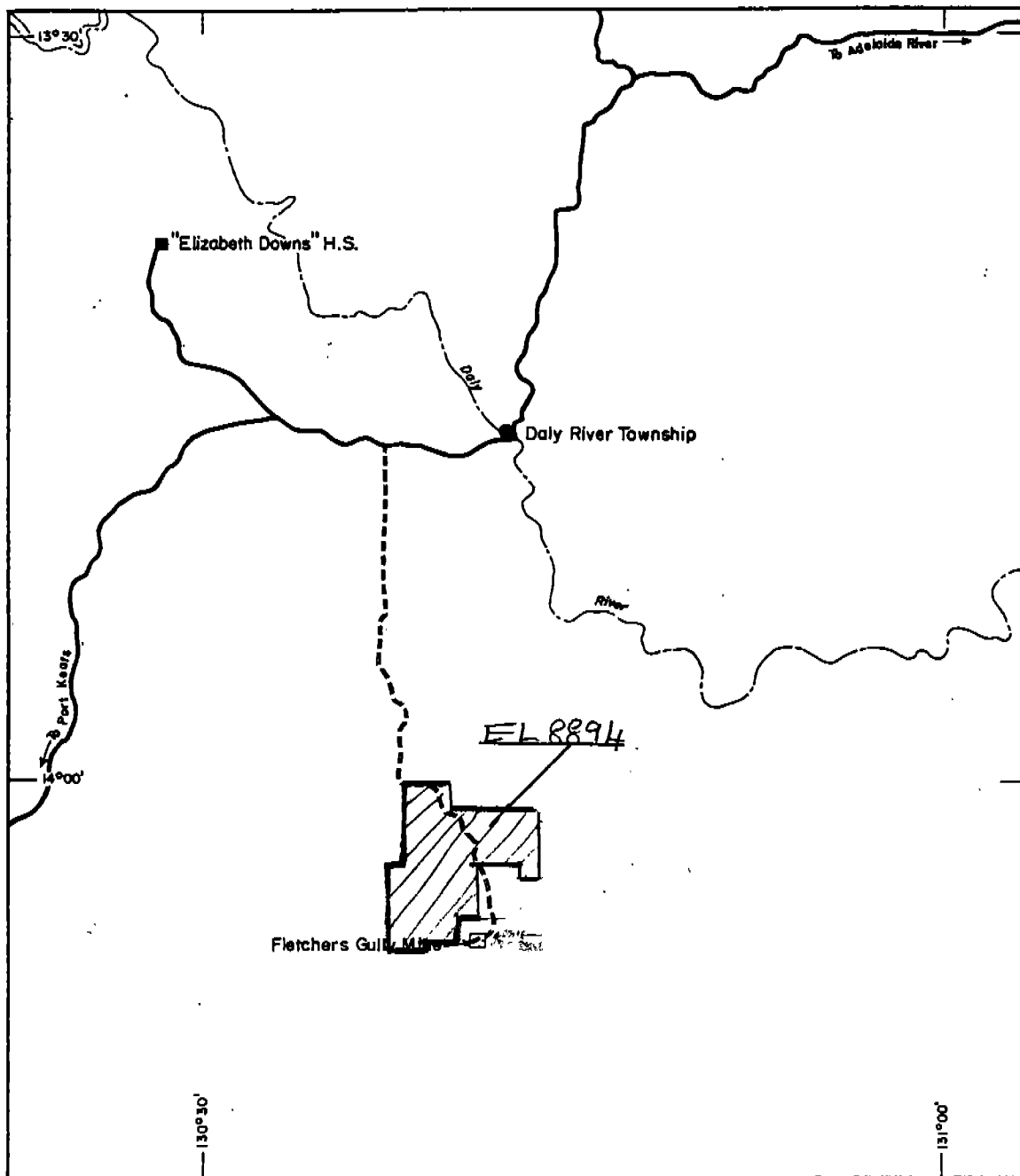
CR96/842.

SECOND SCHEDULE
(Plan of Area)



EL8894
55 BLOCKS
177 sq kms

EL 8894



INTRODUCTION

EL 8894 was taken up to cover any extension of the Fletcher Gully Gold Mine area to the north west.

During the latter half of 1996 RC drilling was carried out as the Fletcher Gully Mine area. This did show considerable mineralization but also tended to indicate the probability of small uneconomic ore shoots, particularly in relation to its out of the way position in relation to possible treatment plants.

WORK CARRIED OUT

Stream sediment samples were taken in numerous streams (Plan A) to the north west of Fletcher Gully Gold Mine. Some specks of gold were noted in the dished concentrate in three locations. These were only of a minor nature.

CONCLUSION OF 1996 WORK

Gold mineralization from Fletcher Gully Gold Mine does not seem to extend to any great length to the north west.

WORK PROGRAM FOR 1996/97

The 3 sample sites showing positive results will be followed up, re-sampled and adjacent areas rock chip sampled.

Areas not covered in the first year will be stream sampled for gold mineralization.

BUDGET FOR 1996/97 - \$5,000.00

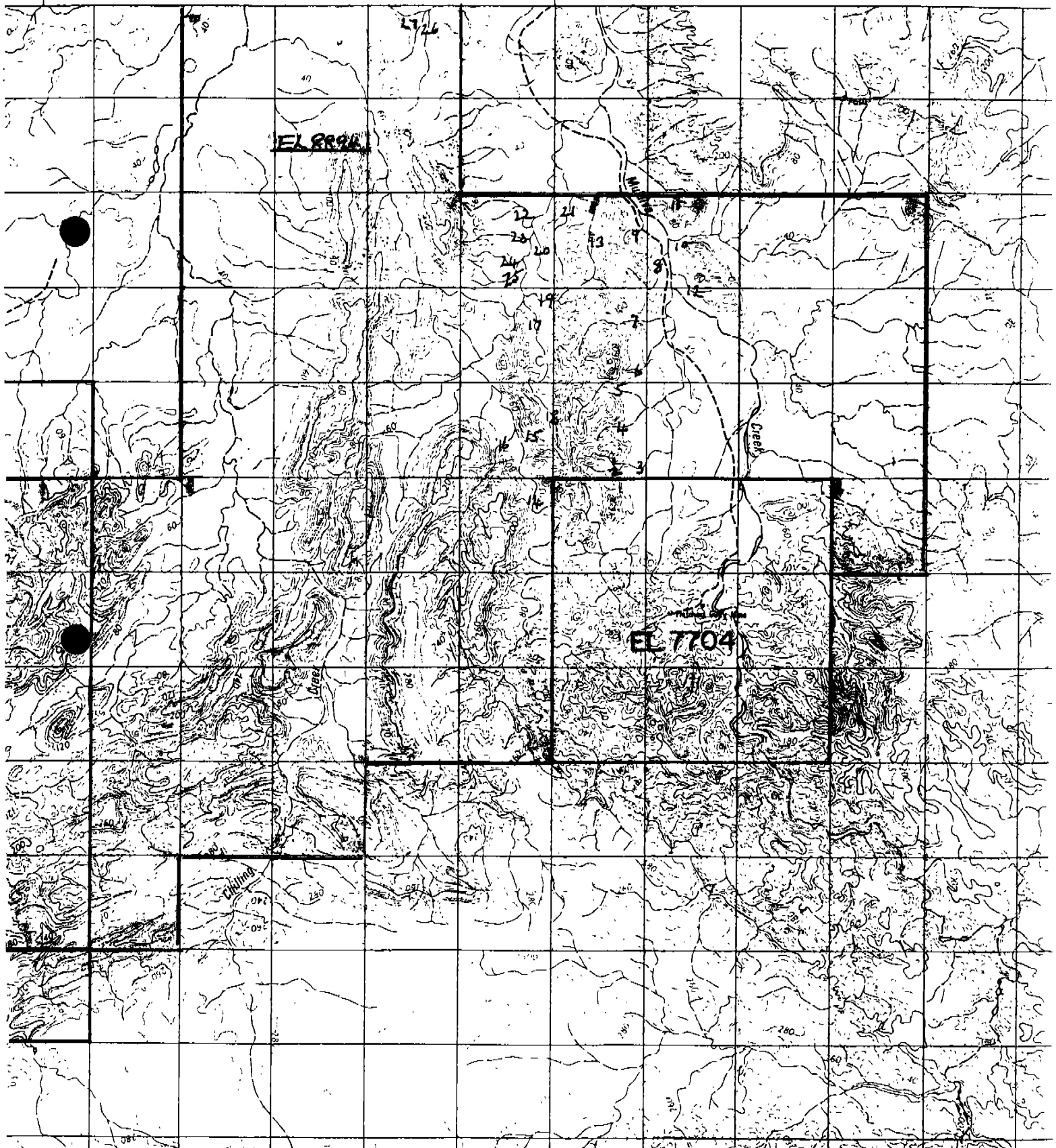
EXPENDITURE 1995/96

Research, mapping	\$1,200.00
Field trip, sampling	5,500.00
Administration	900.00
	<hr/>
	\$7,600.00
	<hr/>

WINGATE M

NORTHERN T

15 16 17 18 19 20 21 22 23 24 25



Pan conc samples EL 8894.

	TYPE	Au	Sn	Pb	COMMENT
1	Pan conc	-	-		
2	"	-	-		
3	"	spack	✓		
4	"	-	-		
5	"	-	-		
6	"	-	-		
7	"	spack	-		
8	"	-	✓		
9	"	-	✓		
10	"	-	-		
11	"	-	-		
12	"	-	✓		
13	"	-	-		
14	"	-	-		
15	"	-	-		
16	"	-	-		
17	"	-	-		
18	"	spack	-		
19	"	-	-		
20	"	-	-		
21	"	-	-		
22	"	-	-		
23	"	-	-		
24	"	-	-		
25	"	-	-		
26	"	-	-		
27	"	-	-		
28					
29					
30					
31					
32					
33					
34					