

APPENDIX IV

GAMMA RAY CORRELATIONS. VERTICAL SCALE 1:250.

ALPHA HILL, SANDY CREEK, OCHRE MINE

MINERAL INDUSTRY  
SURVEY

CE 30 / 092 B

---



# NORTHERN TERRITORY - Sandy Creek

## Gamma Ray Correlations

# Line 8295300N

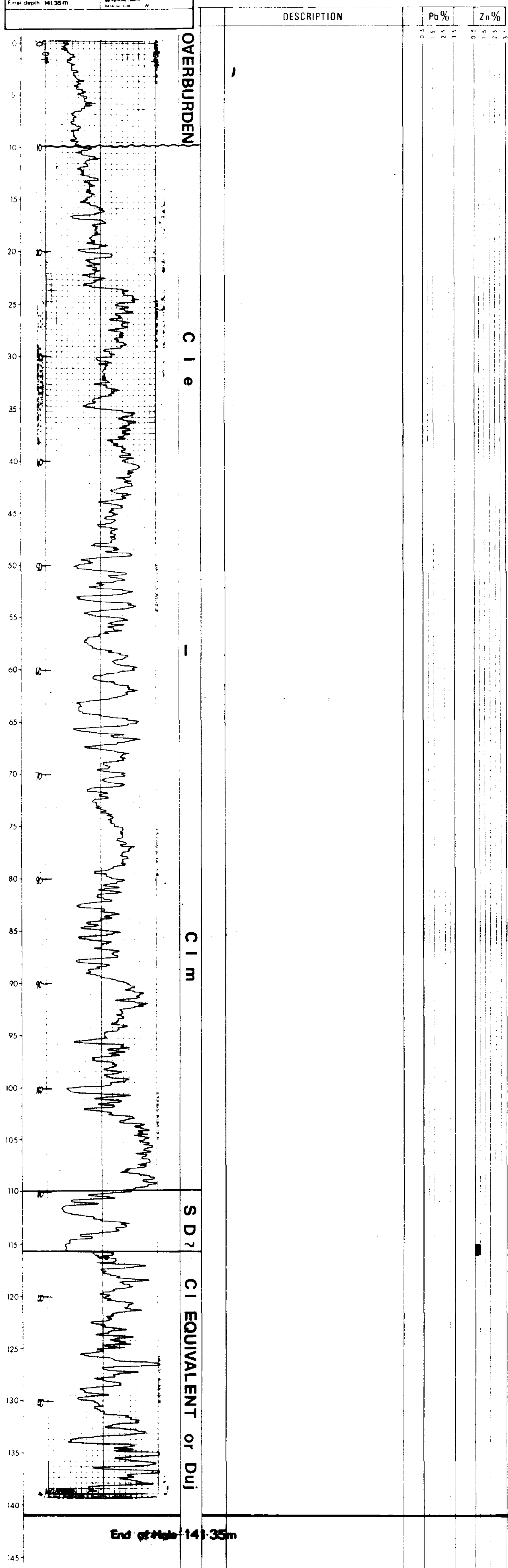
Scale: 1/250

Date 31.12.79

Author: B. Heuillon - J. Lee

<b>BONAPARTE GULF BASIN W.A.</b> <b>SANDY CREEK</b> <b>NBK 1032</b>	
National Grid 8295300N 0519550E	Geographical Grid 113° 00' 00" E 11° 00' 00" S
Date 31.12.79 R. HUTCHINGS	Log No. 100 CA Log Date 31.12.79 Log Time 1.00 Log Location 113° 00' 00" E 11° 00' 00" S
Final depth 141.35m	Description N

B



# NORTHERN TERRITORY - Sandy Creek

## Gamma Ray Correlations

### Line 8295700N

Scale: 1/250

Date 31.12.79

Author: B. Heuillon - J. Lee

**FORACO GAMMA RAY LOG** 1100

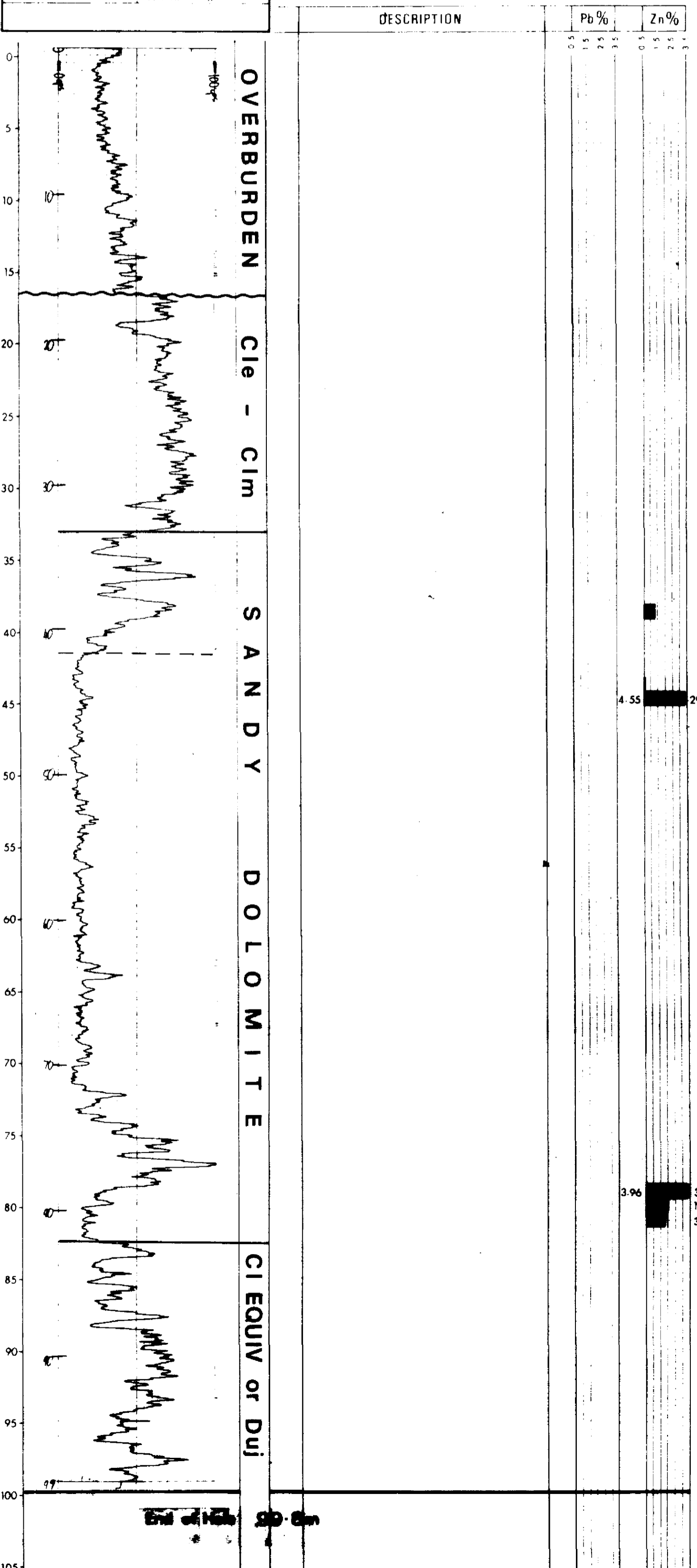
**BONAPARTE GULF BASIN W A**  
**SANDY CREEK**  
**NBK 1031**

Final depth 99.8 m

CO ORDINATES  
MIMETS Grid: 8295650 m, 0519725 m  
Aquitaine Grid: 2.2

LOGGING PARAMETERS:  
Scale: 50 Hz  
100 CPS  
Range: 0 - 100 CPS  
Time: 2 Sec  
Log interval: 1.5 m min  
Approx. 1.01

B



# NORTHERN TERRITORY - Sandy Creek

## Gamma Ray Correlations

### Line 8295900N

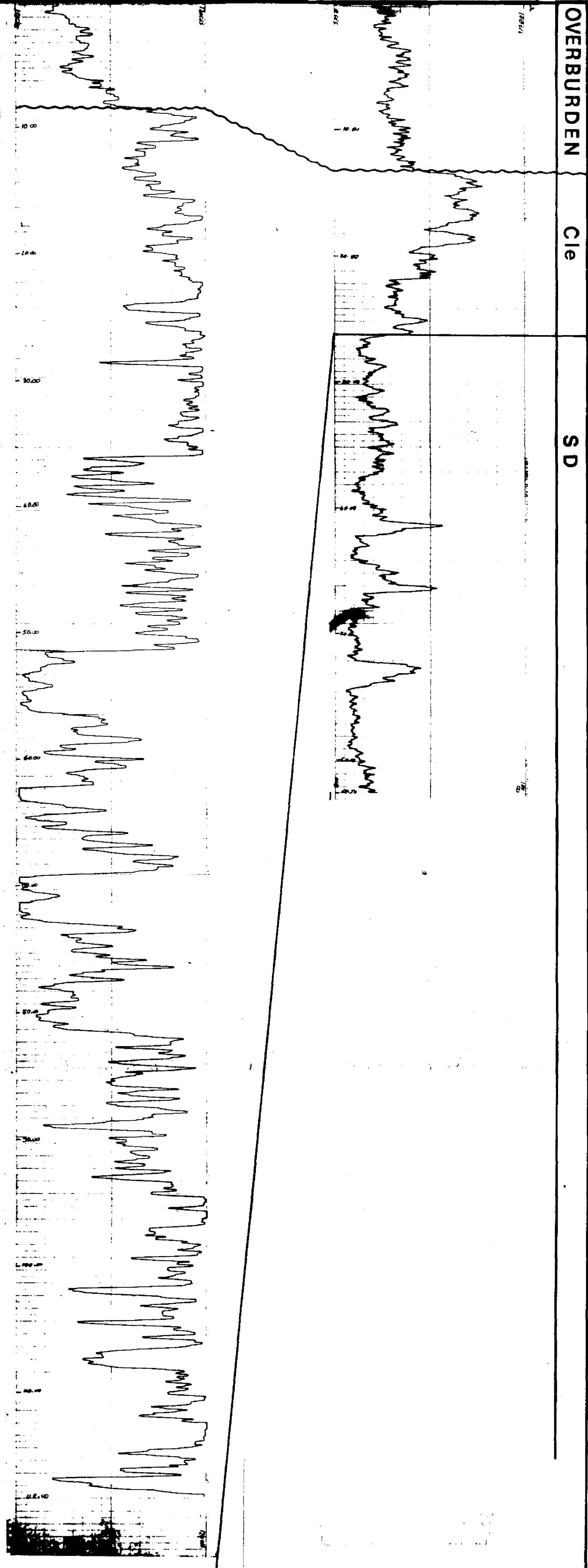
Scale: 1/250

Date 31.12.79

Author: B. Heuillon - J. Lee

<b>GAMMA RAY LOG</b> 1:100 AQUITAINE AUSTRALIA MINERALS PTY LTD - SEREM BONAPARTE GULF BASIN - KEEP RIVER <b>NBK 4011</b> National grid 8295890 0519510 CO-ORDINATES Aquitaine grid 4400 4000 Hole size Borehole medium Logging Fluid level Date Operator FINAL DEPTH 119m NBK 4011		Calibration standard K factor Dead time First reading Range Time constant Logging speed Paper scale Background counts Detector size FINAL DEPTH 119m
--	--	--

<b>GAMMA RAY LOG</b> 1:250 AQUITAINE AUSTRALIA MINERALS PTY LTD MIM CONWEST BONAPARTE GULF BASIN - KEEP RIVER <b>NBK 4087</b> National grid 8295890 0519910 CO-ORDINATES Aquitaine grid 4400 4000 Hole size Borehole medium Logging Fluid level Date Operator FINAL DEPTH 62.7m		Calibration standard K factor Dead time First reading Range Time constant Logging speed Paper scale Background counts Detector size
---	--	--



8295900N B

# NORTHERN TERRITORY - Sandy Creek

## Gamma Ray Correlations

# Line 8296300N

Scale: 1/250

Date 31.12.79

Author: B. Heuillon - J. Lee

**FORACO GAMMA RAY LOG 1:250**

AQUITAINE AUSTRALIA MINERALS PTY LTD MIM CONWEST

**BONAPARTE GULF BASIN - KEEP RIVER**

**NBK 4086/1010**

Natural grid: 8296292, 0519910  
 CO-ORDINATES: Aquitaine grid

Male size, Baritone medium, Counting, Front level, Date, Operator, FINAL DEPTH 158 m

Calibration standard, K factor, Dead time, First reading, Range, Time constant, Logging speed, Paper scale, Background counts, Detector size

**FORACO GAMMA RAY LOG 1:250**

AQUITAINE AUSTRALIA MINERALS PTY LTD MIM CONWEST

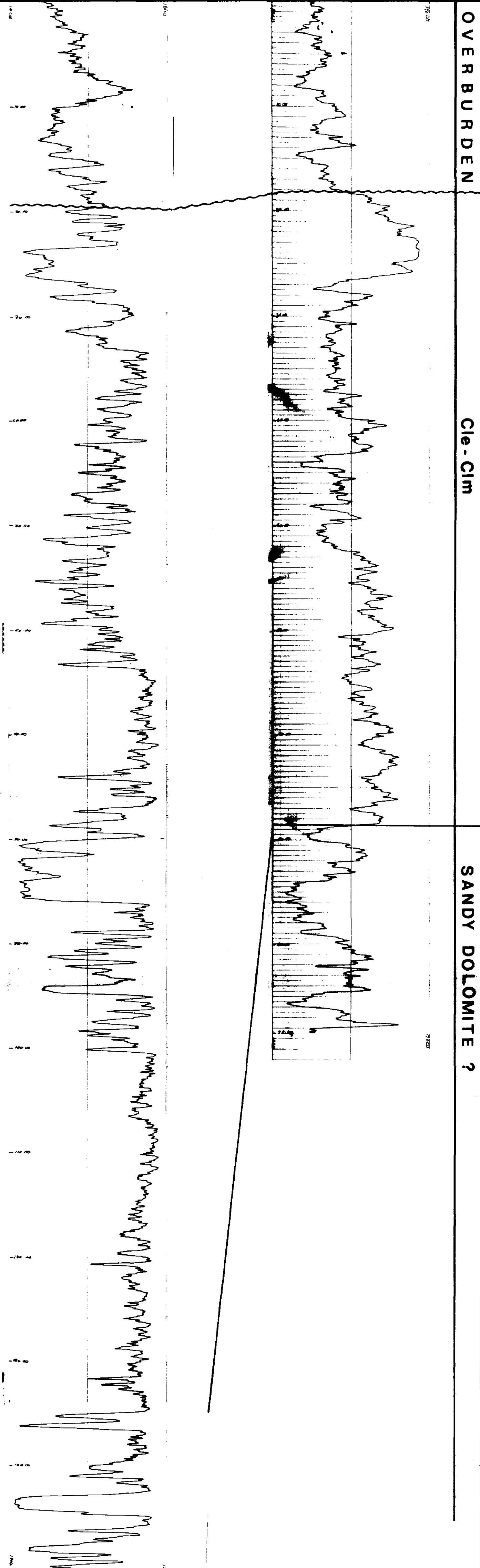
**BONAPARTE GULF BASIN - KEEP RIVER**

**NBK 4085**

Natural grid: 8296292, 0520310  
 CO-ORDINATES: Aquitaine grid

Male size, Baritone medium, Counting, Front level, Date, Operator, FINAL DEPTH 98.5 m

Calibration standard, K factor, Dead time, First reading, Range, Time constant, Logging speed, Paper scale, Background counts, Detector size



OVERBURDEN

Cle - Cim

SANDY DOLOMITE ?

**NORTHERN TERRITORY - Sandy Creek**

**Gamma Ray Correlations**

**Line 8296400N**

Scale: 1/250

Date 31.12.79

Author: B. Heuillon - J. Lee

**GAMMA RAY LOG** 1:100

BONAPARTE GULF BASIN W.A.  
SANDY CREEK  
NBK 1030

CD COORDINATES  
8296400  
0520200

119.09

B

DEPTH (m)	DESCRIPTION	Pb %			Zn %		
		S1	S2	S3	S1	S2	S3
0 - 14.5	OVERBURDEN						
14.5 - 80	Cie - Cim						
80 - 91	SD	6.11	5.35	4.19	8.94	3.80	2.22
91 - 120	CIEQUIVALENT OF DUJ						11
120 - 125	End of Hole 119.09m						13

# NORTHERN TERRITORY - Sandy Creek

## Gamma Ray Correlations

### Line 8296700N

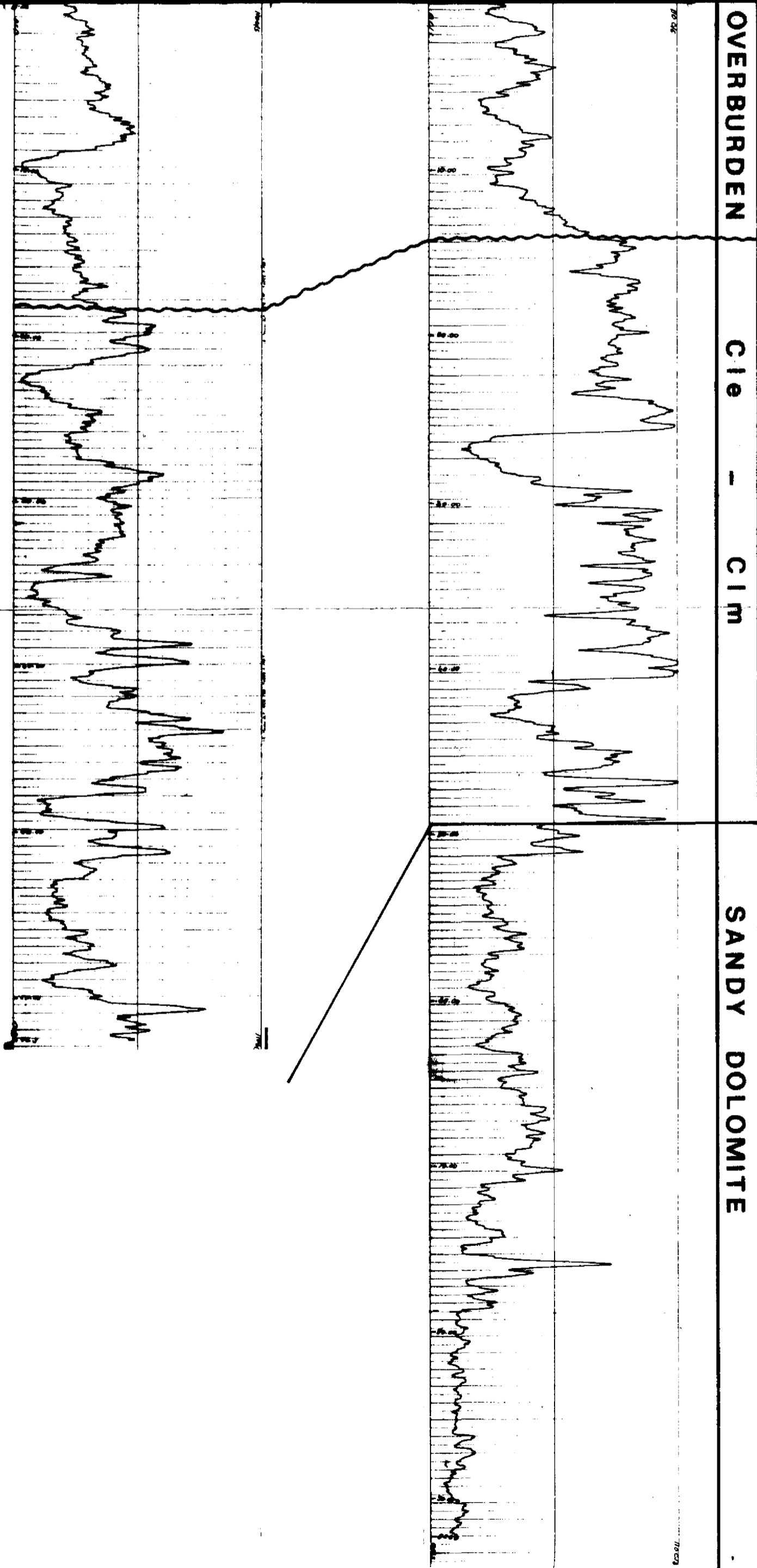
Scale: 1/250

Date 31.12.79

Author: B. Heuillon - J. Lee

PERACO GAMMA RAY LOG 1:250		
AQUITAINE AUSTRALIA MINERALS PTY LTD MIM / CONWEST		
BONAPARTE GULF BASIN - KEEP RIVER		
NBK 4084		
National grid	CO-ORDINATES	Aquitaine grid
8296692 0519910		5200 N 4400 E
Well size	Calibration standard	
Drillhole medium	K factor	
Casing	Dead time	
Fluid level	First reading	
Date	Range	
Operator	Time constant	
	Logging speed	
	Paper scale	
FINAL DEPTH 92.30 m	Background counts	Detector size

PERACO GAMMA RAY LOG 1:250		
AQUITAINE AUSTRALIA MINERALS PTY LTD MIM / CONWEST		
BONAPARTE GULF BASIN - KEEP RIVER		
NBK 4083		
National grid	CO-ORDINATES	Aquitaine grid
8296692 0520310		5200 N 4400 E
Well size	Calibration standard	
Drillhole medium	K factor	
Casing	Dead time	
Fluid level	First reading	
Date	Range	
Operator	Time constant	
	Logging speed	
	Paper scale	
FINAL DEPTH 92.30 m	Background counts	Detector size



B



**NORTHERN TERRITORY - Sandy Creek**

**Gamma Ray Correlations**

**Line 829 6900N**

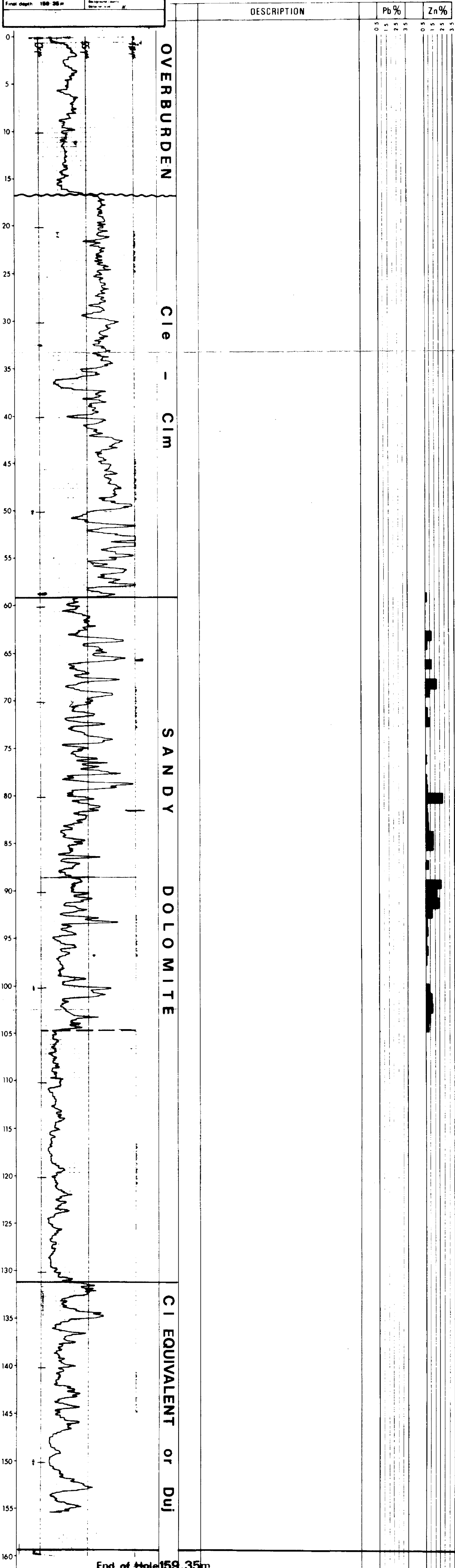
Scale: 1/250

Date 31.12.79

Author: B. Heuillon - J. Lee

<b>GAMMA RAY LOG</b>	
DONAPATE GULF BASIN W.A. <b>SANDY CREEK</b> <b>NBK 1023</b>	
Well No: NBK 1023 Date: 31/12/79 Depth: 159.35m	Correlation Number: 8016 Scale: 1/250 Range: 0-100gpc Time: 2 hrs Logging Rate: 3 gph Log No: 1/700 Date: 31/12/79

3





NORTHERN TERRITORY - Sandy Creek

Gamma Ray Correlations

Line 8297100N

Scale: 1/250

Date 31.12.79

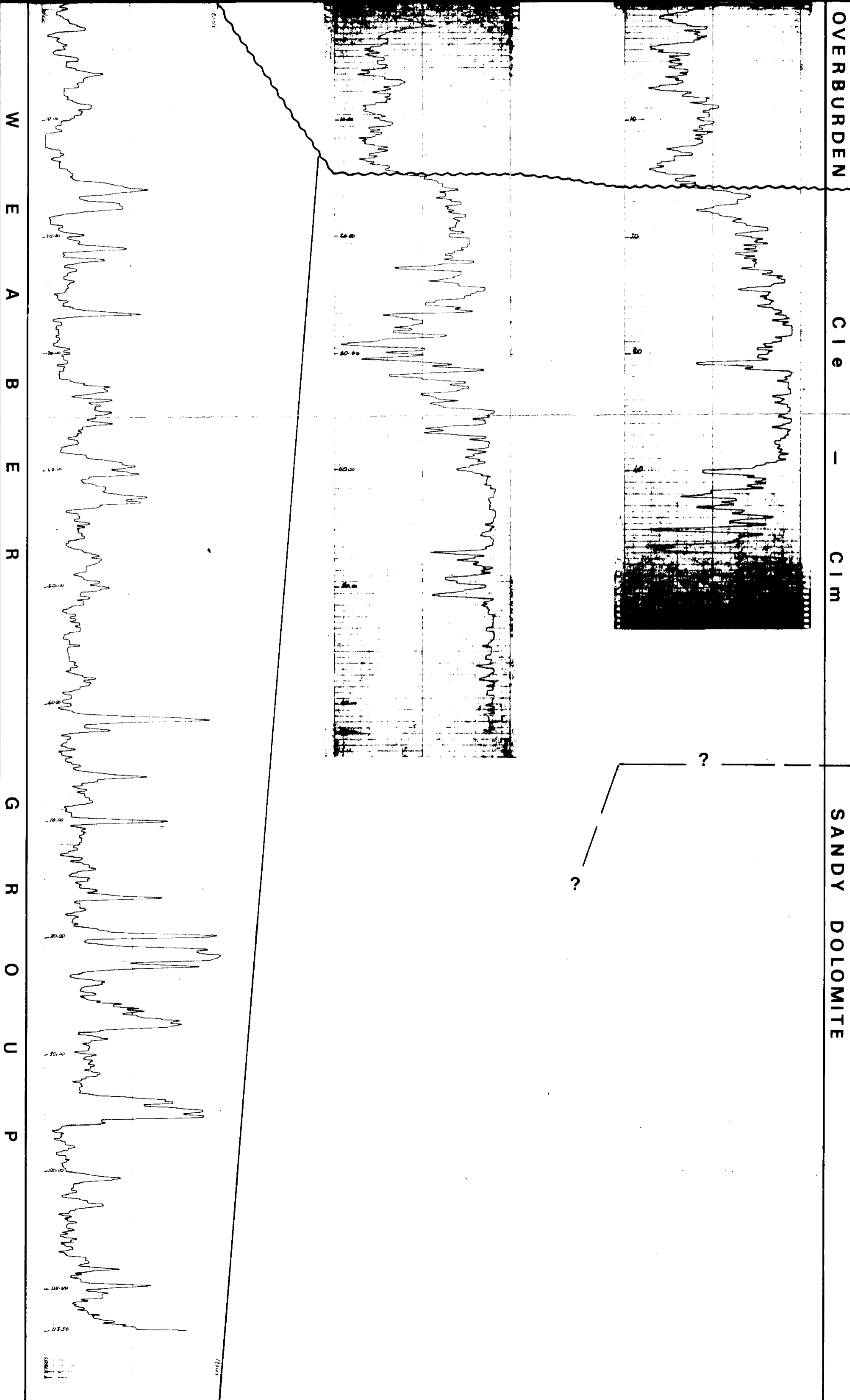
Author: B. Heuillon - J. Lee

B

FORACO GAMMA RAY LOG 1:100		
AQUITAINE AUSTRALIA MINERALS PTY LTD - SEREM		
BONAPARTE GULF BASIN - KEEP RIVER		
NBK 4009		
National grid 8297090 0519510	CO-ORDINATES	Aquitaine grid 5600 4000
Hole size Borehole medium Casing Fluid level Date Operator	Calibration standard K factor Dead time First reading Range Time constant Logging speed Paper scale Background counts Detector size	FINAL DEPTH 135m
NBK 4009 FINAL DEPTH 135m		

FORACO GAMMA RAY LOG 1:100		
AQUITAINE AUSTRALIA MINERALS PTY LTD - MIM - OMMEST		
BONAPARTE GULF BASIN - KEEP RIVER		
NBK 1002		
National grid 8297090 0520505	CO-ORDINATES	Aquitaine grid 5600 5000
Hole size Borehole medium Casing Fluid level Date Operator	Calibration standard K factor Dead time First reading Range Time constant Logging speed Paper scale Background counts Detector size	FINAL DEPTH 144m
NBK 1002 FINAL DEPTH 144m		

FORACO GAMMA RAY LOG 1:100		
AQUITAINE AUSTRALIA MINERALS PTY LTD - SEREM		
BONAPARTE GULF BASIN - KEEP RIVER		
NBK 4004		
National grid 8297090 0520580	CO-ORDINATES	Aquitaine grid 5600 5075
Hole size Borehole medium Casing Fluid level Date Operator	Calibration standard K factor Dead time First reading Range Time constant Logging speed Paper scale Background counts Detector size	FINAL DEPTH 49.5m
NBK 4004 FINAL DEPTH 49.5m		



W  
E  
A  
B  
E  
R  
G  
R  
O  
U  
P

OVERBURDEN  
CIE  
-  
CIM  
SANDY DOLOMITE







NORTHERN TERRITORY - Sandy Creek

Gamma Ray Correlations

Line 8297300N

Scale: 1/250

Date 31.12.79

Author: B. Heuillon, J. Lee

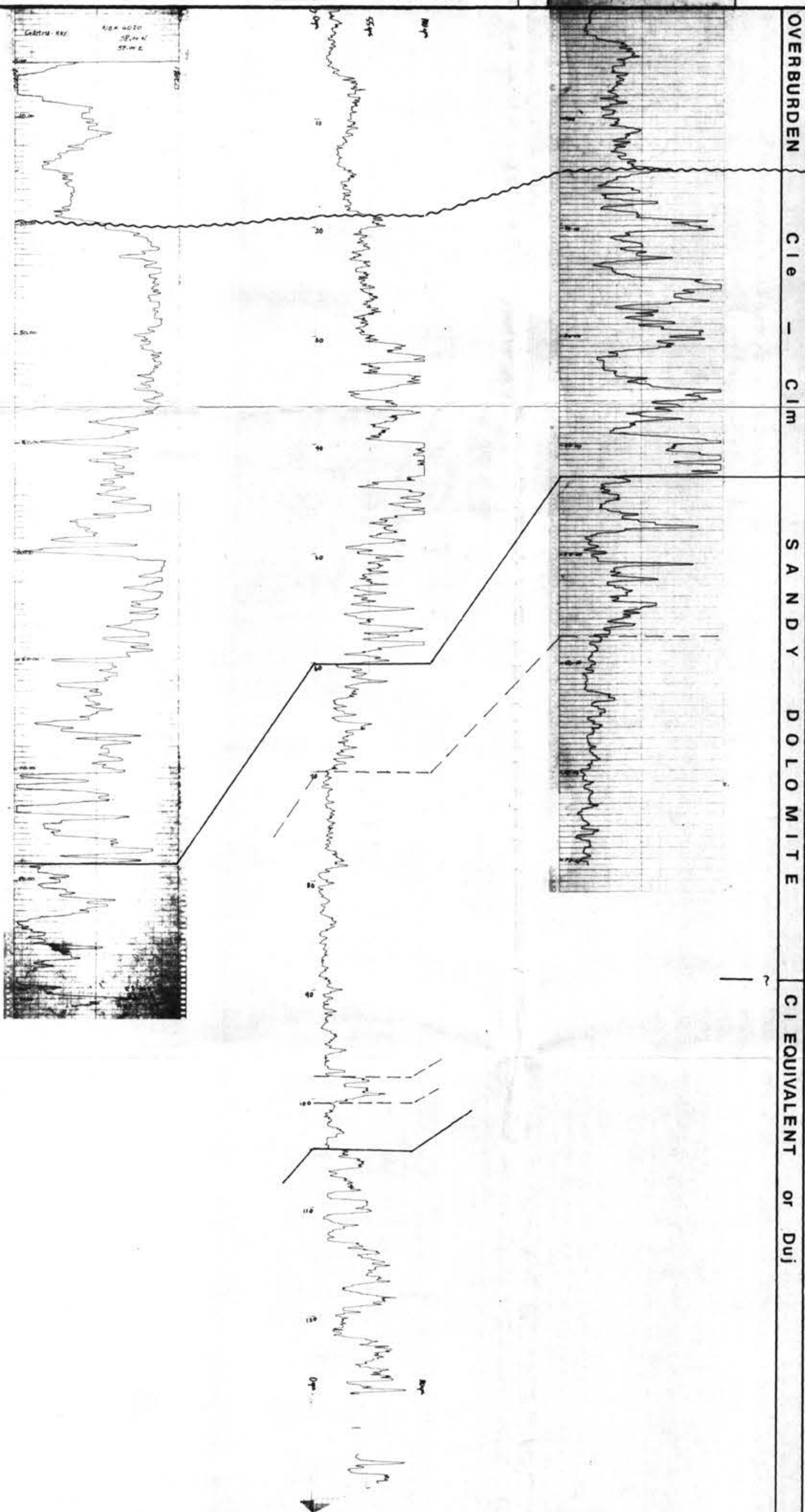
NORTHERN TERRITORY  
REGISTRY OF MINES

60307032 B

FORACO GAMMA RAY LOG 1:100	
AQUITAINE AUSTRALIA MINERALS PTY. LTD. - 1541M	
BONAPARTE GULF BASIN - KEEP RIVER	
NBK 4020	
National grid 8297290, 0520707	CO-ORDINATES Apparatus grid 500 500
Well type Borehole location Casing Fluid Name Date Operator	Calculation standard K factor Depth (m) True reading Range Time corrected Logging speed Paper size Background correct Detector used
FINAL DEPTH 10m	FINAL DEPTH 10m

FORACO GAMMA RAY LOG 1:100	
BONAPARTE GULF BASIN W.A. SANDY CREEK	
NBK 1028	
National grid 8297300 0520725	CO-ORDINATES Apparatus grid 500 500
Well type Borehole location Casing Fluid Name Date Operator	Calculation standard K factor Depth (m) True reading Range Time corrected Logging speed Paper size Background correct Detector used
FINAL DEPTH 135.5m	FINAL DEPTH 135.5m

FORACO GAMMA RAY LOG 1:100	
BONAPARTE GULF BASIN N.T. KEEP RIVER	
NBK 1011	
National grid 8297300 0520707	CO-ORDINATES Apparatus grid 500 500
Well type Borehole location Casing Fluid Name Date Operator	Calculation standard K factor Depth (m) True reading Range Time corrected Logging speed Paper size Background correct Detector used
FINAL DEPTH 100m	FINAL DEPTH 100m



OVERBURDEN  
-  
C I e  
-  
C I m  
-  
S A N D Y  
D O L O M I T E  
-  
C I E Q U I V A L E N T  
o r  
D U J







**NORTHERN TERRITORY - Ochre Mine**

**Gamma Ray Correlations**

**Line 8306450N**

Scale: 1/250

Date 31.12.79

Author: B. Heuillon - J. Lee

**GAMMA RAY LOG**

BONAPARTE GULF BASIN N.T.  
**FLAPPER HILL**  
**OM-R-046**

CO-ORDINATES

8306455 - 0530327

8306450N

DEPTH (m)	DESCRIPTION	Pb %				Zn %			
		0.5	1.5	2.5	3.5	0.5	1.5	2.5	3.5
0	Alluvium - talus.								
5	Interbedded Sandstone and Siltstone. Yellow, friable, leached at top.								
10	Sandstones hard limonitic with traces of PbS.								
15									
20									
25									
30	Siltstone very limonitic, pale to dark brown, silicious.								
35									
40	Abundant quartzite layers continuing to end of hole.								
45									

END OF HOLE 48m

C10 - C1m



AQUITAINE AUSTRALIA MINERALS Pty. Ltd.

MIMETS EXPLORATION Pty. Ltd.

# NORTHERN TERRITORY - Ochre Mine

## Gamma Ray Correlations

# Line 8306700N

Scale: 1/250

Date 31.12.79

Author: B. Heuillon - J. Lee

**FORACO GAMMA RAY LOG** 1100

AQUITAINE AUSTRALIA MINERALS PTY LTD

BONAPARTE GULF BASIN N.T.  
FLAPPER HILL  
**OM-R-048**

PROSPECTOR'S No. 8306720 -  
0530095

ORIGINATOR'S No. 2815  
1860

APPROVED No. \*

DATE OF LOG

LOGGERS

REVISIONS

REMARKS

DEPTH

8306700N 2B

DEPTH (m)	DESCRIPTION	Pb %				Zn %			
		0.5	1.5	2.5	3.5	0.5	1.5	2.5	3.5
0 - 5	Alluvium - Scree.								
5 - 20	Friable white purple and red sandstone. Red yellow and white shale and clay.								
20 - 25	Light brown friable sandstones only minor shale.								
25 - 35	Yellow purple clay, minor sandstone.								
35 - 40	Siltstone, Argillaceous. Precambrian?								

OM - R - 048

END OF HOLE 42m

# NORTHERN TERRITORY - Ochre Mine

## Gamma Ray Correlations

### Line 8306800N

Scale: 1/250

Date 31.12.79

Author: B. Heuillon - J. Lee

**GAMMA RAY LOG**

BONAPARTE GULF BASIN NT  
**FLAPPER HILL**  
**OM-R-049**

8306835  
0530005

83068002 B

DEPTH (m)	DESCRIPTION	Pb %				Zn %			
		0.5	1.5	2.5	3.5	0.5	1.5	2.5	3.5
0	Alluvium - Scree.								
5	Siltstone. With minor interbeds of carbonaceous shale and yellow-red quartz sandstone. Siltstone friable and soft.								
10									
15									
20									
25									
30	Shale. Yellow and pink with minor manganiferous sandstone.								
35									
40									
45									
50	END OF HOLE 50m.								

OR - C10 - C1m



AQUITAINE AUSTRALIA MINERALS Pty. Ltd.

MIMETS EXPLORATION Pty. Ltd.

# NORTHERN TERRITORY - Ochre Mine

## Gamma Ray Correlations

# Line 8307400N

Scale: 1/250

Date 31.12.79

Author: B. Hovillon - J. Lee

**LOG SHEET**

**GAMMA RAY LOG**

DEPARTMENT OF MINES AND PETROLEUM  
NORTHERN TERRITORY  
FLAMER HILL  
OM-R-062

Map Grid: 8307400N  
3100

Map Grid: 3100

Log No: 000000000

Final depth: 42 m

NORTHERN TERRITORY  
DEPARTMENT OF MINES AND PETROLEUM

8307400N 3100

DEPTH (m)	DESCRIPTION	Pb %				Zn %			
		0.5	1.5	2.5	3.5	0.5	1.5	2.5	3.5
0	Siltstone Sandstone sequence. Red brown, highly ferruginous quartz sandstone. White Mn spotted quartz sand.								
5	Highly decomposed yellow siltstone. Abundant yellow clay and Mn fragments.								
10	White-brown feldspathic quartz sandstone disseminated Mn. Abundant silt.								
15	Predominantly yellow-brown silt, minor feldspathic sandstone.								
20	Yellow brown, decomposed, shale and siltstone.								
25									
30	Quartz Sandstone. White-brown, fine grained, laminated.								
35									
40									
42	END OF HOLE 42 m.								

CIR - CIR

# NORTHERN TERRITORY - Ochre Mine

## Gamma Ray Correlations

# Line 8307500N

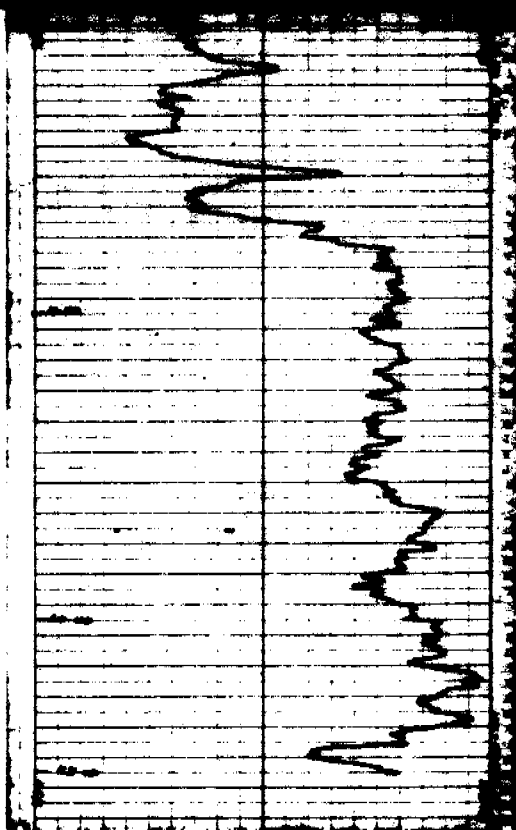
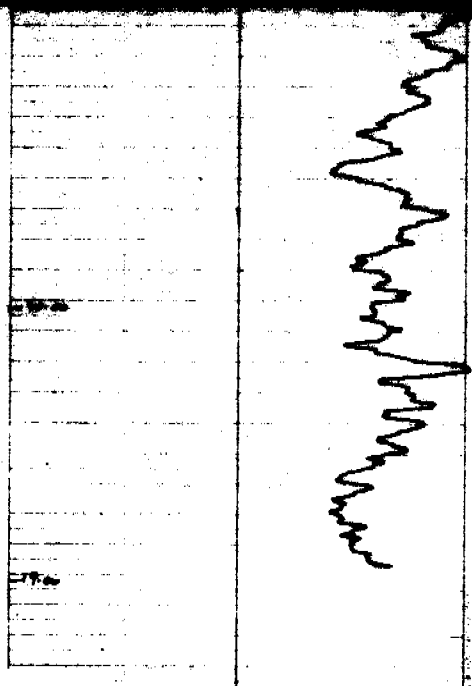
Scale: 1/250

Date 31.12.79

Author: B. Heuillon - J. Lee

<b>LOG</b> <b>GAMMA RAY LOG</b> 11000 AQUITAINE AUSTRALIA MINERALS PTY LTD BONAPARTE GULF BASIN N.T. <b>FLAPPER HILL</b> <b>OM - R - 064</b> ID - CORRELATION Final depth 40.00	
Hole size Surface marker Core Fluid level Dip Operator	Correlation standard K factor Decay index Fluid logging Range Time constant Logging speed Paper size Background count Detector size

<b>LOG</b> <b>GAMMA RAY LOG</b> 11000 AQUITAINE AUSTRALIA MINERALS PTY LTD BONAPARTE GULF BASIN N.T. <b>FLAPPER HILL</b> <b>DDH 115</b> ID - CORRELATION Final depth 105.00	
Hole size Surface marker Core Fluid level Dip Operator	Correlation standard K factor Decay index Fluid logging Range Time constant Logging speed Paper size Background count Detector size



C I O - C I M

8307500N B

**NORTHERN TERRITORY - Ochre Mine**

**Gamma Ray Correlations  
Line 8307600N**

Scale: 1/250

Date 31.12.79

Author: B. Heuillon - J. Lee

**FORACO GAMMA RAY LOG** 1100  
AQUITAINE AUSTRALIA MINERALS PTY. LTD.  
**BONAPARTE GULF BASIN N.T.**  
**FLAPPER HILL**  
**NBF 4106**  
National Grid: 8307605 - 0530137  
CO ORIGINATES: [ ]  
AQUITAINE GRID: [ ]

B

DEPTH (m)	DESCRIPTION	Pb %				Zn %			
		0.5	1.5	2.5	3.5	0.5	1.5	2.5	3.5
0 - 3	ALLUVIUM Silt and clay.								
3 - 68	<u>SILTSTONE</u>  Multicoloured, highly oxidised and decomposed. Local manganese concretions.  Local fine grained quartz sandstone interbeds. Becoming sandier with depth. At depth weak dolomitic cement.								

OB

C l e -  
C l m

END OF HOLE 68 m

# NORTHERN TERRITORY - Ochre Mine

## Gamma Ray Correlations

### Line 8308700N

Scale: 1/250

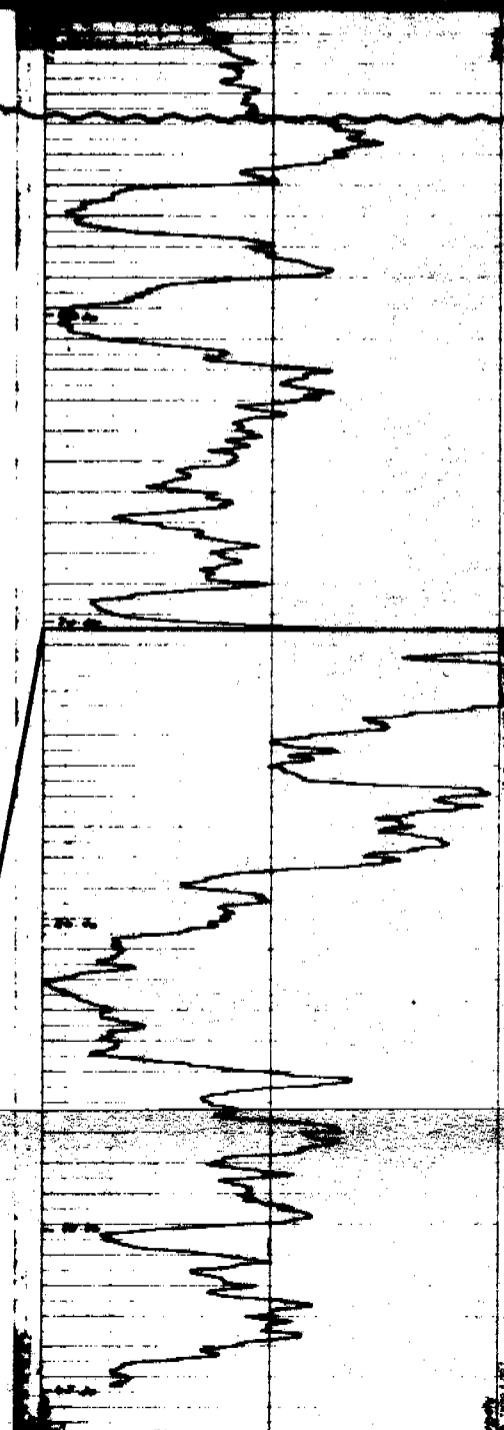
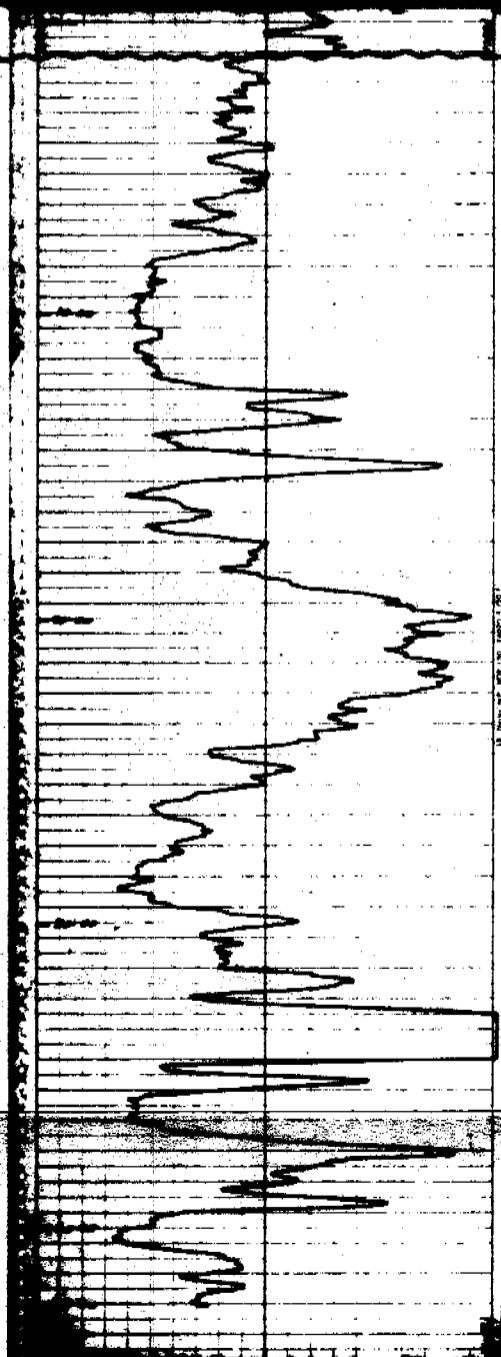
Date 31.12.79

Author: B. Heuillon, J. Lee

GAMMA RAY LOG	
AQUITAINE AUSTRALIA MINERALS PTY LTD	
BONAPARTE GULF BASIN N.T.	
OCHRE MINE CLAIMS	
NBC 4050	
National Grid	Aquidone Grid
4800	3400
Final depth 89 00	Detector size
Hole size Spindle medium Casing Fluid level Date Operator	Calibration standard X factor Dead time First reading Range Time constant Logging speed Paper scale Background counts

GAMMA RAY LOG	
AQUITAINE AUSTRALIA MINERALS PTY LTD	
BONAPARTE GULF BASIN N.T.	
OCHRE MINE CLAIMS	
NBC 4051	
National Grid	Aquidone Grid
4800	5100
Final depth 83 00	Detector size
Hole size Spindle medium Casing Fluid level Date Operator	Calibration standard X factor Dead time First reading Range Time constant Logging speed Paper scale Background counts

C i e - C i m



O.B SANDY DOLOMITE CI EQUIVALENT OF DU1?

NORTHERN TERRITORY - Ochre Mine

Gamma Ray Correlations

Line 8308900N

Scale: 1/250

Date 31 12 79

Author: B. Heuillon - J. Lee

080 B

**FORACO GAMMA RAY LOG 1:100**

AQUITAINE AUSTRALIA MINERALS PTY LTD - SEREM  
 BONAPARTE GULF BASIN - OCHRE MINE  
**NBC 4032**

National Grid: CO-ORDINATES: Aquitaine Grid

5000  
 1500

Final depth: 70.0

**FORACO GAMMA RAY LOG 1:100**

AQUITAINE AUSTRALIA MINERALS PTY LTD  
 BONAPARTE GULF BASIN N.T.  
 FLAPPER HILL  
**NBF 4096**

National Grid: CO-ORDINATES: Aquitaine Grid

5000  
 1500

Final depth: 70.0

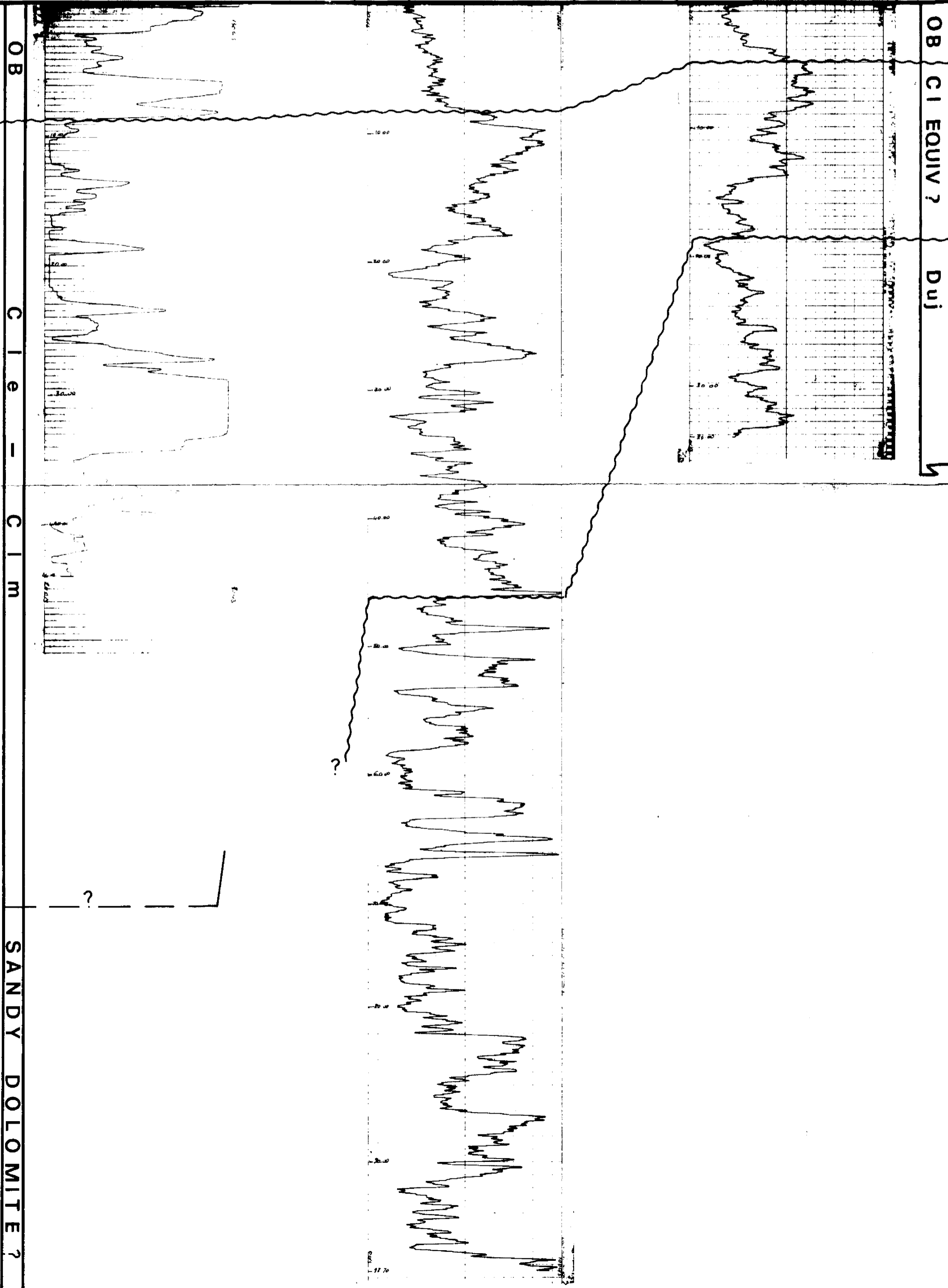
**FORACO GAMMA RAY LOG 1:100**

AQUITAINE AUSTRALIA MINERALS PTY LTD  
 BONAPARTE GULF BASIN N.T.  
 FLAPPER HILL  
**NBF 4097**

National Grid: CO-ORDINATES: Aquitaine Grid

5000  
 1500

Final depth: 70.0



OB

C I E

C I M

SANDY DOLOMITE?

OB C I EQUIV ?

Duj



# NORTHERN TERRITORY - Ochre Mine

## Gamma Ray Correlations

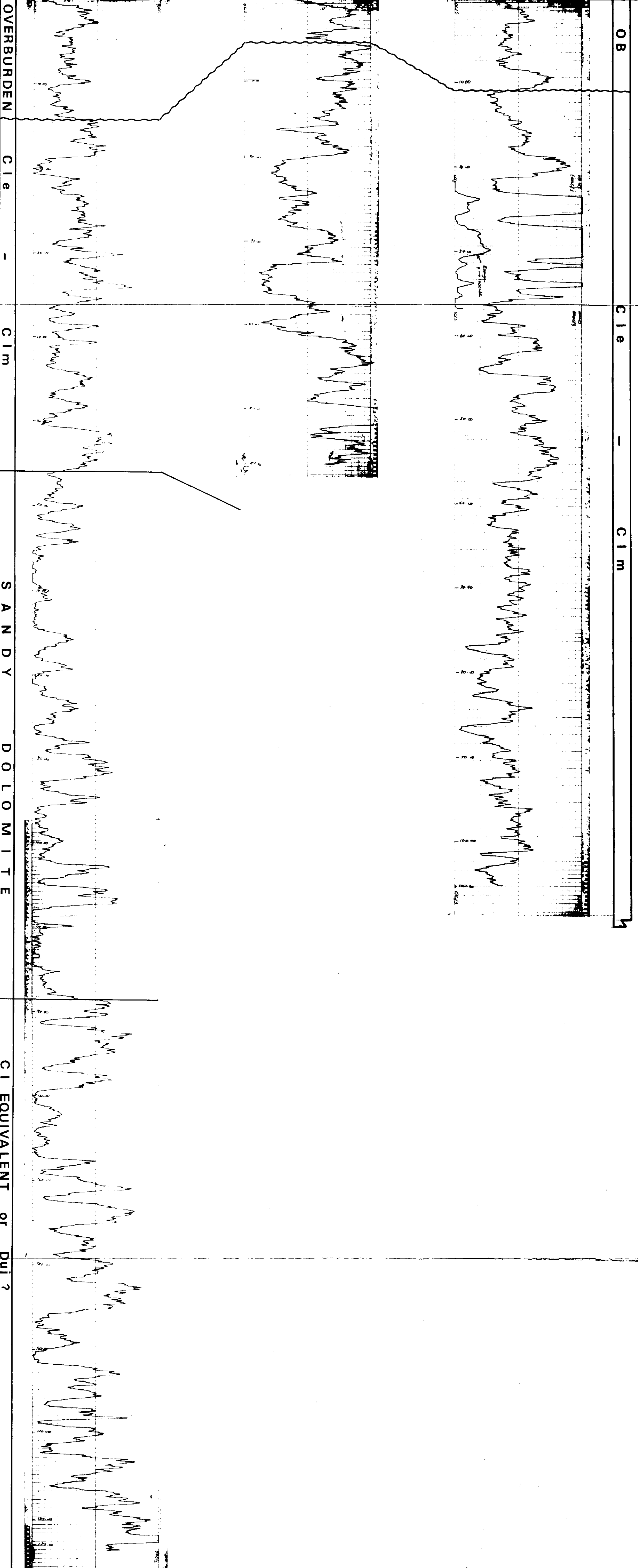
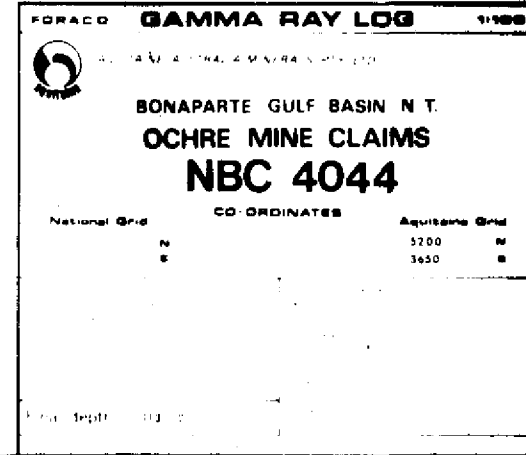
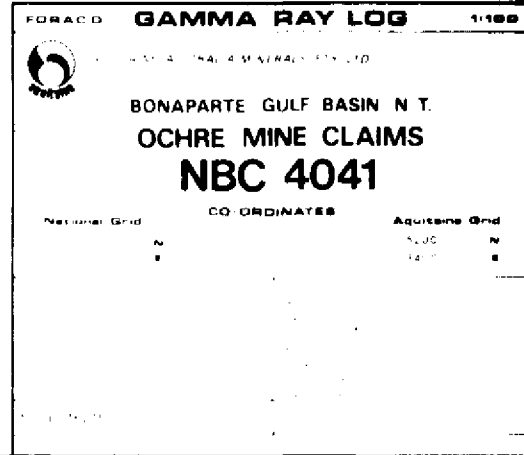
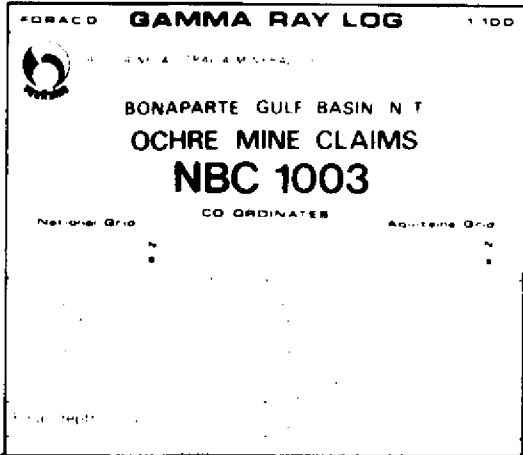
### Line 8309 100N

Scale: 1/250

Date 31 12 79

Author: B. Heuillon - J. Lee

8309 100N  
8309 100N



**NORTHERN TERRITORY - Ochre Mine**

**Gamma Ray Correlations**

**Line 8309200N**

Scale: 1/250

Date 31.12.79

Author: B Heuillon - J. Lee

**GAMMA RAY LOG**

BONAPARTE GULF BASIN N.T.  
OCHRE MINE CLAIMS  
NBC 1002

CO ORDINATES: 8309206-0530206

8309206

DEPTH (m)	DESCRIPTION	Pb %		Zn %	
		0-5	5-10	0-5	5-10
0 - 13.5	ALLUVIUM Sand and clay.				
13.5 - 32.5	SILTY SHALE Highly oxidised and decomposed to a multicoloured clay.				
32.5 - 37.5	SILTSTONE. Oxidised Brown and white. Massive non calcareous, friable. Minor fine grained sandstone intercalations.				
37.5 - 41.5	SANDSTONE. Oxidised. Brown. Friable, porous.				
41.5 - 45.5	SILTSTONE. Oxidised. Multicoloured.				
45.5 - 50.5	SANDSTONE. Oxidised. Silicified.				
50.5 - 55.5	SILTSTONE. Oxidised. Brown, ferruginous.				
55.5 - 60.5	INTENSE OXIDATION - KARSTIC SURFACE. Highly oxidised. Quartz grains. clayey in part. Approximately 10% core recovery.				
60.5 - 65.5	CAVITY.				
65.5 - 115.7	DOLOMITE. Crystalline, slightly silty. Oxidised, vuggy. Locally silicified. Silt content increasing with depth, dolomite grading into a dolomitic siltstone. (Unoxidised from 104.6-106.0m. and 108.8m. to 115.7m.)				

ALLUVIUM

OB

Cie - Cim

Sandy Dolomite

SANDY DOLOMITE

END OF HOLE 115.7 m

# NORTHERN TERRITORY - Ochre Mine

## Gamma Ray Correlations

# Line 8309300N

Scale: 1 250

Date 31 12 79

Author: B. Heuillon - J. Lee

NORTHERN TERRITORY  
GEOLOGICAL SURVEY

8309300N

**FORACO GAMMA RAY LOG 1100**

AQUITAINE AUSTRALIA MINERALS PTY LTD  
BONAPARTE GULF BASIN - OCHRE MINE  
NBC 4007

National Grid CO-ORDINATES Aquitaine Grid

Well size	Calibration standard
Borehole medium	K factor
Leasing	Dead time
Fluid level	First reading
Date	Range
Operator	Time constant
	Logging speed
	Paper scale
	Background counts
	Detector type

FINAL DEPTH 5800

**FORACO GAMMA RAY LOG 1100**

AQUITAINE AUSTRALIA MINERALS PTY LTD  
BONAPARTE GULF BASIN N T  
OCHRE MINE CLAIMS  
NBC 4039

National Grid CO-ORDINATES Aquitaine Grid

Well size	Calibration standard
Borehole medium	K factor
Leasing	Dead time
Fluid level	First reading
Date	Range
Operator	Time constant
	Logging speed
	Paper scale
	Background counts
	Detector type

Final depth 5800

**FORACO GAMMA RAY LOG 1100**

AQUITAINE AUSTRALIA MINERALS PTY LTD  
BONAPARTE GULF BASIN N T  
OCHRE MINE CLAIMS  
NBC 4042

National Grid CO-ORDINATES Aquitaine Grid

Well size	Calibration standard
Borehole medium	K factor
Leasing	Dead time
Fluid level	First reading
Date	Range
Operator	Time constant
	Logging speed
	Paper scale
	Background counts
	Detector type

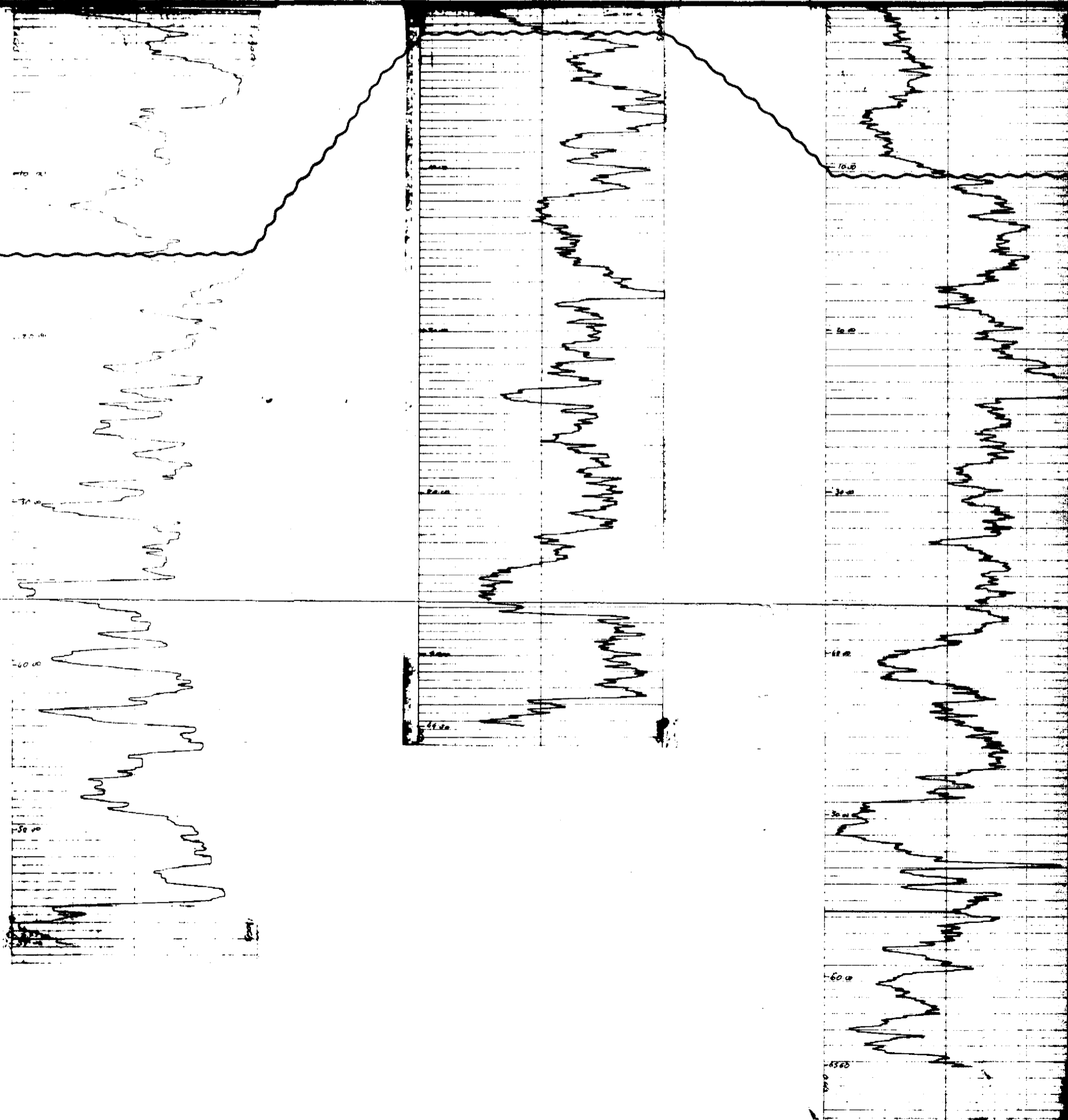
Final depth 5800

OB

C1e - C1m

OB

C1e - C1m



**NORTHERN TERRITORY - Ochre Mine**

**Gamma Ray Correlations**

**Line 8311 500N**

Scale: 1/250

Date 31.12.79

Author: B. Heuillon - J. Lee

**GAMMA RAY LOG**

BONAPARTE GULF BASIN N.T.  
OCHRE MINE CLAIMS  
NBC 4055

NATIONAL GRID CO-ORDINATES  
8311505  
0531638

117  
118  
119  
120  
121  
122  
123  
124  
125  
126  
127  
128  
129  
130  
131  
132  
133  
134  
135  
136  
137  
138  
139  
140  
141  
142  
143  
144  
145  
146  
147  
148  
149  
150  
151  
152  
153  
154  
155  
156  
157  
158  
159  
160  
161  
162  
163  
164  
165  
166  
167  
168  
169  
170  
171  
172  
173  
174  
175  
176  
177  
178  
179  
180  
181  
182  
183  
184  
185  
186  
187  
188  
189  
190  
191  
192  
193  
194  
195  
196  
197  
198  
199  
200

DEPTH (m)	DESCRIPTION	Pb %				Zn %			
		0	5	10	15	0	5	10	15
0 - 8	Red lateritic sands. Yellow clay.								
8 - 33	SHALE. Dark grey and black, calcareous. Some black, shaly CALCAREOUS SILTSTONE.								
33 - 68	SANDY DOLOMITE, DOLOMITIC SANDSTONE. Mottled grey-brown. Up to 90% coarse grained quartz.								
68 - 78	Oolite and pellet ghosts and rare crinoids.								
78 - 83	Interbedded: SANDY DOLOMITE Crystalline, grey-brown. BLACK SHALE. Non calcareous, fissile.								

ALLUVIUM

Sandy Dolomite

OB  
Cie - Cim

END OF HOLE 83 m

**NORTHERN TERRITORY - Ochre Mine**

**Gamma Ray Correlations**

**Line 8316 200N**

Scale: 1/250

Date 31.12.79

Author: B. Heuillon - J. Lee

**GAMMA RAY LOG**

BONAPARTE GULF BASIN N.T.  
**FLAPPER HILL**  
**NBF 4104**

8316210  
0535120

2 B

DEPTH (m)	DESCRIPTION	Pb %				Zn %			
		0.5	1.5	2.5	3.5	0.5	1.5	2.5	3.5
0 - 6	ALLUVIUM								
6 - 26	Calcareous clay.  <u>CALCAREOUS SILTSTONE</u> Rare shell debris. Oxidised at top.								
26 - 80	<u>CALCAREOUS SHALE</u> Dark grey. Thin calcisiltite interbeds. Minor calcareous siltstone at base.								
80 - 89	<u>LIMESTONE</u> Biomicrite limestone. Abundant crinoid and brachiopod remains. Thin interbeds black calcareous shale.								

ALLUV.

OB

C1a - C1m

END OF HOLE 89 m.