

16-10-96

EL 8818

Should show EL  
EL 9202.

63

Page ONE HEAD LINES

Page TWO SAMPLE IN MAIN AREA

Page THREE GRAVES and FEW SCATTERED SAMPLE

Page FOUR EXPENCE

Licenses C.D Roman  
Operation C.D Roman

**OPEN FILE**

CR96/517

R. NW corner  
132° 28' long  
16° 45' lat  
main block

132° 45' long  
16° 45' lat  
NE corner of  
block

16-10-96

Page 2 EL 8818

24

1/3 just S of mirage track

Page Samples in main area

132° 45' long  
16° 45' lat  
NE corner of  
block

132° 28' long  
16° 52' lat

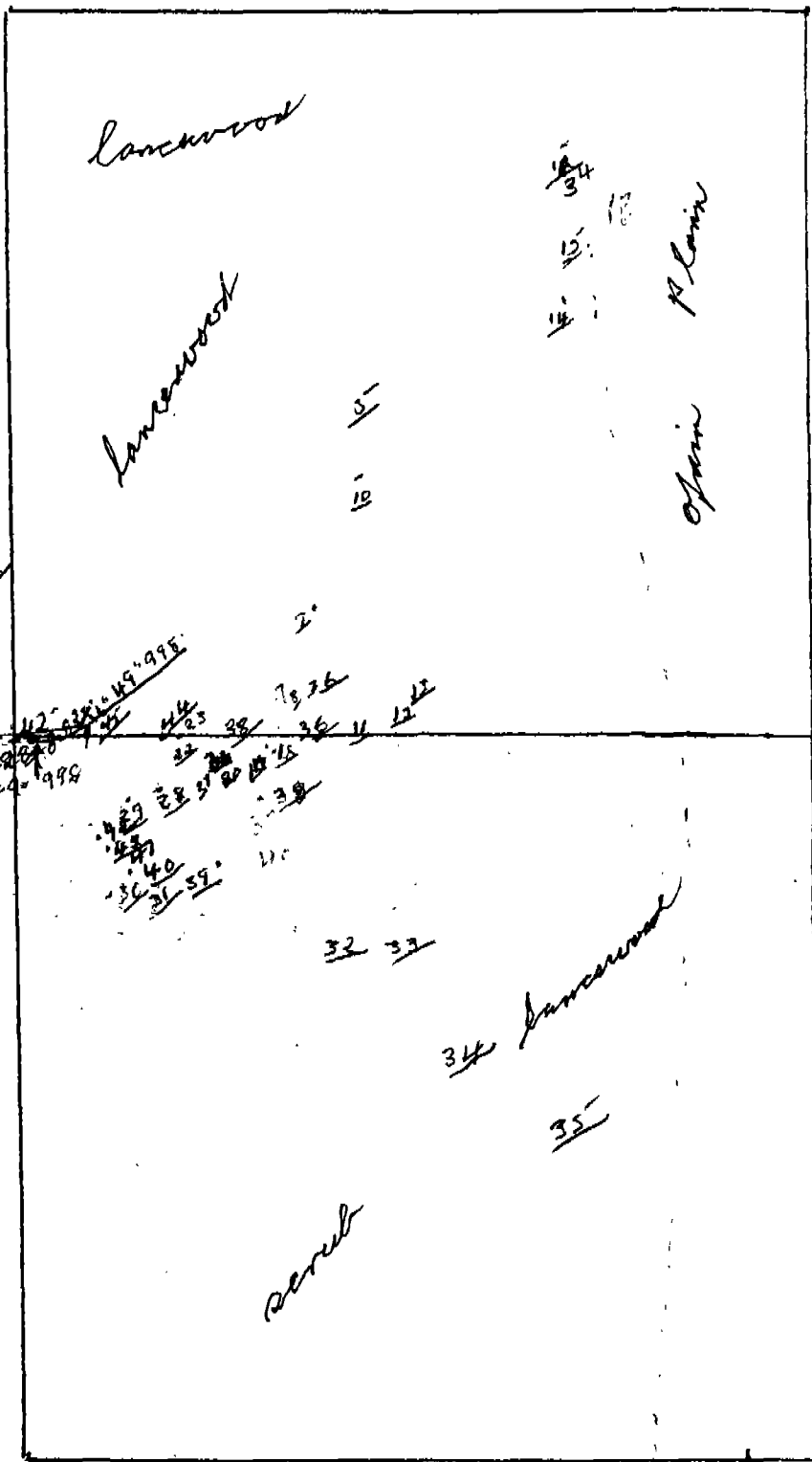
Needs

(1) AMG/or

lat/long  
Feeling this  
could use  
block reference  
from Terrestrial Map

(2) North Point

(3) Scale



SW-corner  
132° 28' long  
16° 5' 3' lat  
main block

16° 5' 3' lat  
132° 28' long

19 and

1.8 KM to 10 contours

square block

132° 45' long  
16° 58' lat  
S.E. main  
corner

BUSH and TRAVIS

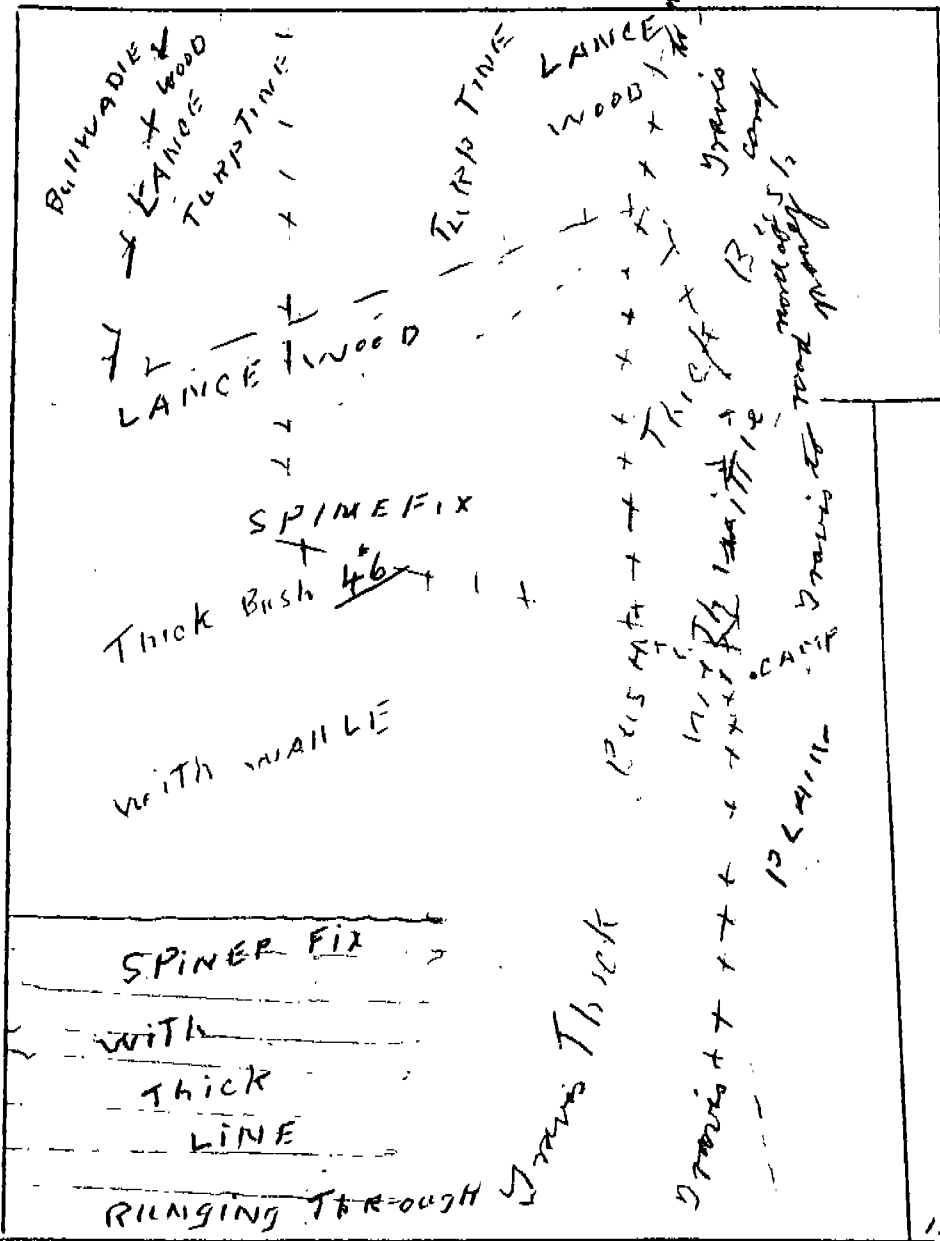
EL 8818

16° 45' lat  
132° 28' long

Road

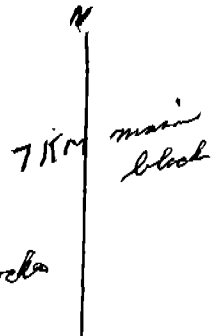
75 KM

132° 45' long NE corner block  
lat 16° 45'



As with previous page

- ① Co ordinates
- ② North Point
- ③ Scale



132° 28' long  
16° 53' lat

132° 45' long  
16° 53' lat S.E. corner of block

The thick bush to get through is mostly made up of  
 with south 40 lb of wood scatter through it  
 where I could get through it on foot I done it  
 as it is very hard on vehicle

Stores	764-65
Hilux Parts	1416-27
Petrol	274 91
wireless instruments	1375 95
Samples	
Hilux	3000 00
Weggs self	10000 00
rego Hilux	<u>153</u>
	16972-58

There is a lot of low grade iron estimated at 20% to 30% over fairly wide area, mostly under laterite

Hard country to get into owing to heavy brush, lines of dense woods, Iupia, with some open spaces and hillsides. I had a talk with a man that knows the iron mining trade and believes it will be some year before there will be any new mines opened, this area will be of use in years to come after my time

The Commodities sought was Fe

At present and for years to come there will not be any demand for new body of high iron or it is best to relinquish the area

I done trails with Hilum but mostly on foot

Most of the ground is covered with red sand and laterite mixed with low grade Fe

I got samples done of reasonable Fe content

I done no geophysical

The samples were assayed at Anabak road at Pine creek

16-8-96

EL 8818

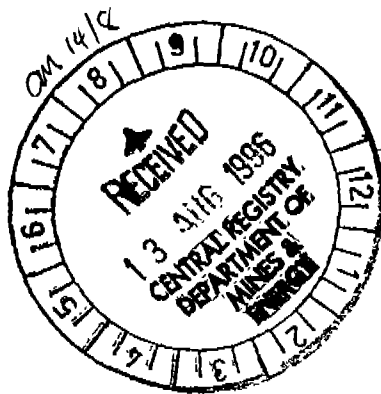
page ~~65~~ 76

- 1 off rock with some sand
- 2 <sup>clay</sup> just below laterite
- 3 laterite
- 4 Soil
- 5 laterite
- 6 Rock from rise of hill
- 7 Rock from rise of hill
- 8 Rock from rise of hill
- 9 Rock from rise of hill
- 10 Rock from brow of hill
- 11 Rock from rise of hill
- 12 Rock from on flat ground
- 13 Rock from flat ground
- 14 Rock from edge of plain
- 15 Rock from edge of plain
- 16 Rock on line of rock going up from plain
- 17 Rock on line of rock going up from plain
- 18 Rock from top of small rise
- 19 Rock from top of small rise
- 20 Pink rock on rise
- 21 Rock on rise
- 22 laterite
- 23 Stone from <sup>under</sup> laterite light purple
- 24 Rock on edge of maranji track
- 26 Rock on top of slight rise
- 27 Solid rock
- 28 Solid rock
- 29 solid rock
- 30 lot of laterite with black sand
- 31 Rock on edge of rise
- 32 Rock
- 33 Rock with loose silice

10-8-96

EL(8818) Page 7 of 7

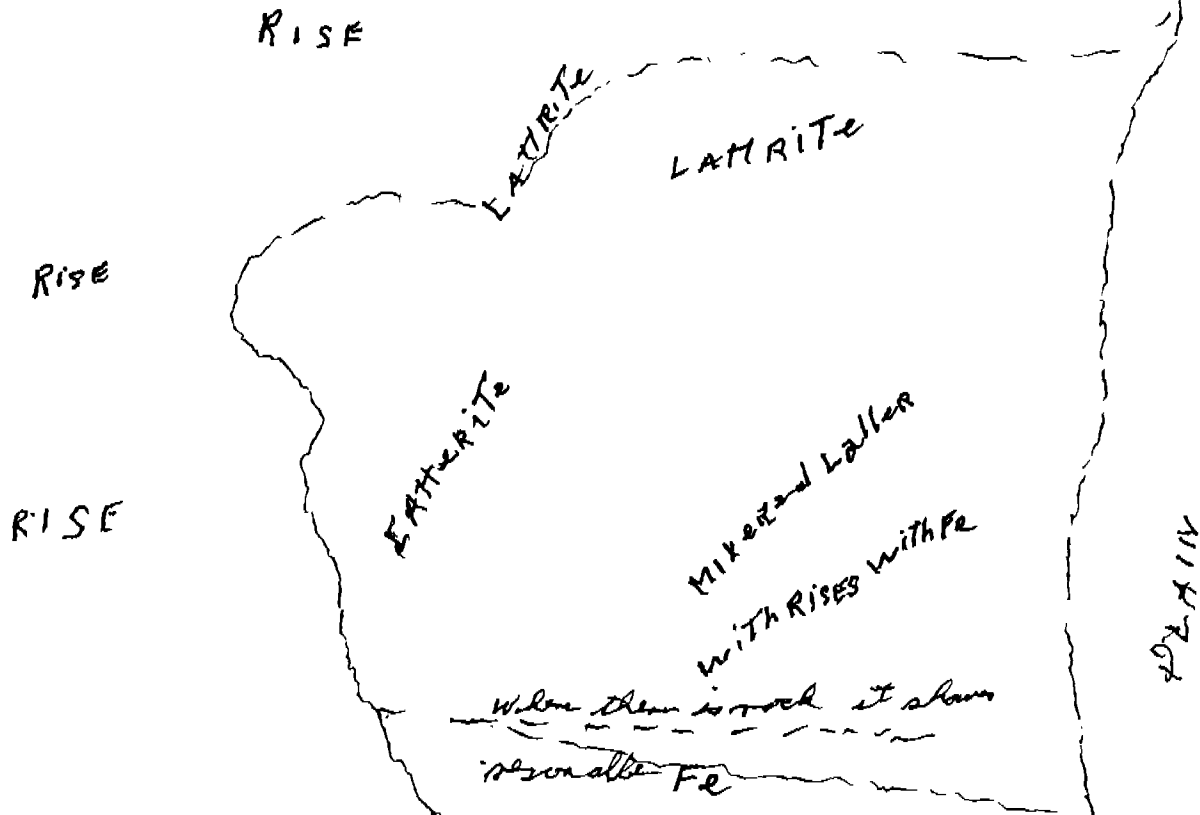
- 34 Rock black sand
- 35 Rock black sand
- 36 Rock black sand
- 37 Rock black sand
- 38 Rock black sand
- 39 Rock with sand
- 40 Rock with sand
- 41 Rock with sand
- 42 Rock with sand
- 43 Rock with sand
- 44 Rock with sand
- 45 Rock with sand
- 46 Rock with mainly laterite



MARRANJ

As for p. 243

- ① a. carbonate
- ② North point
- ③ Scale



- 1 sandstone
- 2 clay under laterite
- 3 laterite
- 4 Boil down bore slope
- 5 laterite
- 6 sandstone
- 7 sandstone
- 8 sandstone
- 9 sandstone
- 10 sandstone
- 11 sandstone
- 12 sandstone
- 13 sandstone
- 14 sandstone
- 15 sandstone
- 16 sandstone
- 17 sandstone
- 18 sandstone
- 19 loest
- 20 sandstone
- 21 sandstone
- 22 Laterite
- 23 Stone from under laterite for 6' under
- 24 Sandstone
- 25 not done
- 26 sand stone
- 27 sand stone
- 28 sand stone
- 29 sand stone
- 30 sand stone
- 31 sand stone
- 32 sand stone

- 33 sand stone
- 34 sand stone
- 35 sand stone
- 36 sand stone
- 37 sand stone
- 38 sand stone
- 39 sand stone
- 40 sand stone
- 41 sand stone
- 42 sand stone
- 43 sand stone
- 44 sand stone
- 45 sand stone
- 46 laterite

I believe the sand  
is coming out of the  
creation as the soil is  
white or gray

The plain beside the  
beach is black soil at edge  
than a white soft rock

I believe it is

melting bed, possible  
with iron on top of it

I intended to go down  
and get some of my things  
and try my new G.P.S.

the old one was so much a  
'6 of a block

I have been waiting for  
some plate to come up for  
my Helix as I can get  
down

In 12 day time I will  
be in Darwin to get  
my cateract out  
of my eye



#32° 28' long.  
16° 54' lat

24  
↑

N  
↑  
+32° 28' long  
16° 45' lat

p1  
2 in close area  
3  
4

17  
16  
15  
14

5  
10  
35

13

12

KM

sample  
36  
16  
152° 42' 820'

23  
22

44  
26  
24

11

29 27 28 26 20 31 37 18  
42 43 35 30 20  
41 40 38  
30 31 34

32 33

334

35

3.6

+32° 28' long  
16° 52' lat

+32° 28' long  
16° 53' lat

14 lost and 1 other 19

*Cristel*

Cecil Don Ronan,  
c/o Community Bag,  
Daly Waters NT 0852  
19/9/96

The Principal Registrar,  
Department Mines & Energy,  
Centrepoint Towers,  
The Mall Darwin NT 0800

Dear Registrar,

**RE PROPOSED EXPLORATION PROGRAM**  
**EXPLORATION LICENCE 9202**  
**SECOND YEAR**

Please find below the exploration program which is proposed for the second year of Exploration Licence 9202 -

Further work will consist of actually examining the ground and forming an opinion on whether economic mineralisation is present. This will be accomplished by traversing in a four wheel drive vehicle where possible despite the dominant vegetation (known locally as lancewood and turpentine). Where this vegetation is such that four wheel drive penetration is not possible, then traversing by foot will be carried out.

Navigation will be by dead reckoning with backup by a Global Positioning System.

Where the magnetic survey carried out by the Federal Australian Geological Survey Organisation shows any significant change in the area covered by the Exploration Licence, check ground surveys will be carried out with a magnetometer.

Because the area is largely covered by alluvium, a Stuhl two stroke powered auger (which can be operated by one man) will be used for taking rock chip samples where required.

It is expected that expenditure of some \$10 000.00 or possibly more (if signs of mineralisation are encountered) could be incurred during the above exploration activities.

Yours faithfully,

C. D. Ronan

*Received*  
*12/9/96*