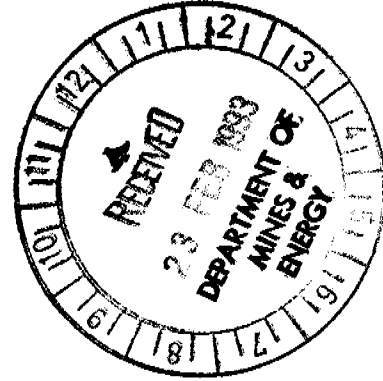


OPEN FILE

FINAL REPORT



EL 7340

MT BONNIE AREA

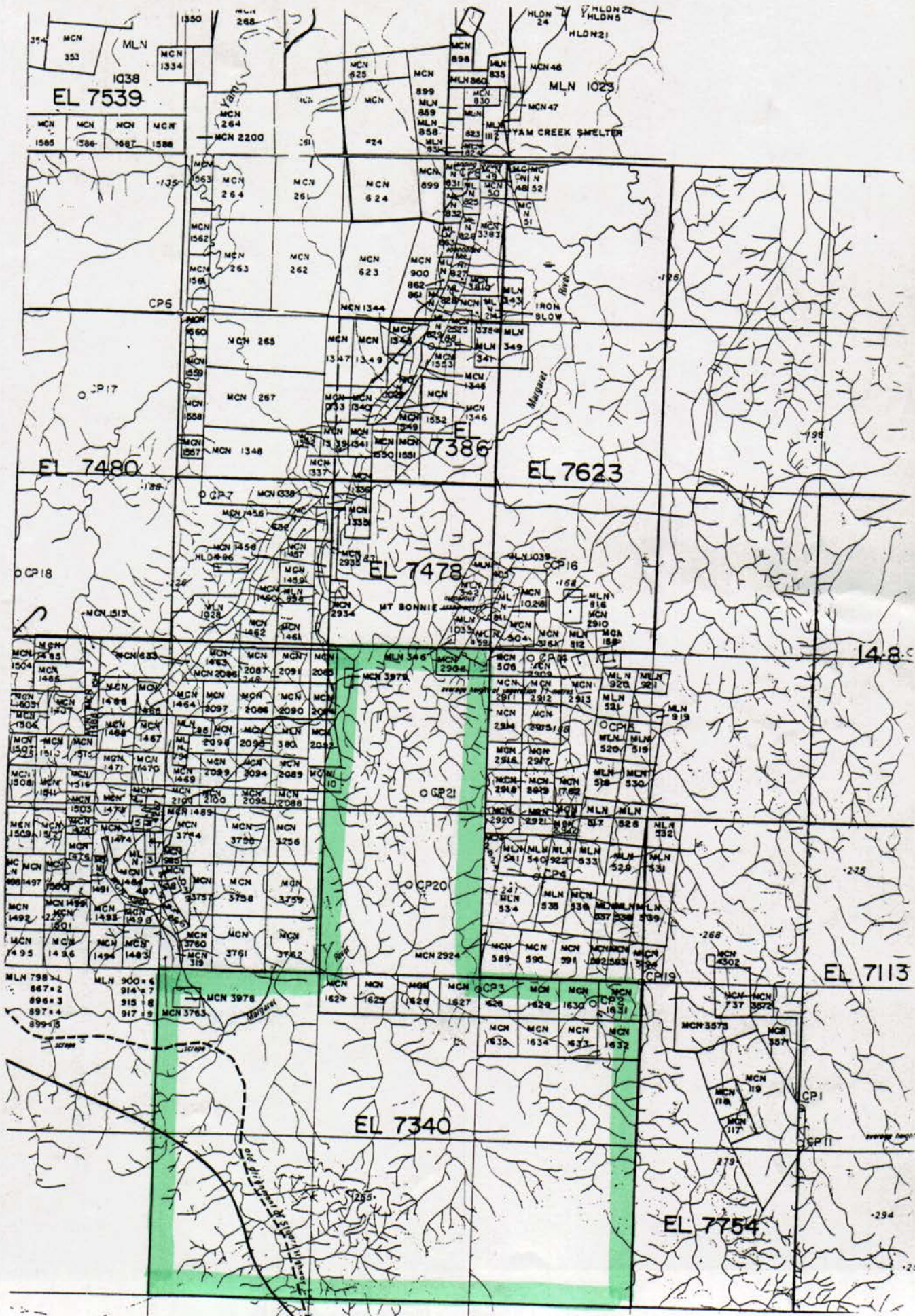
25 January 1992 to 24 January 1993

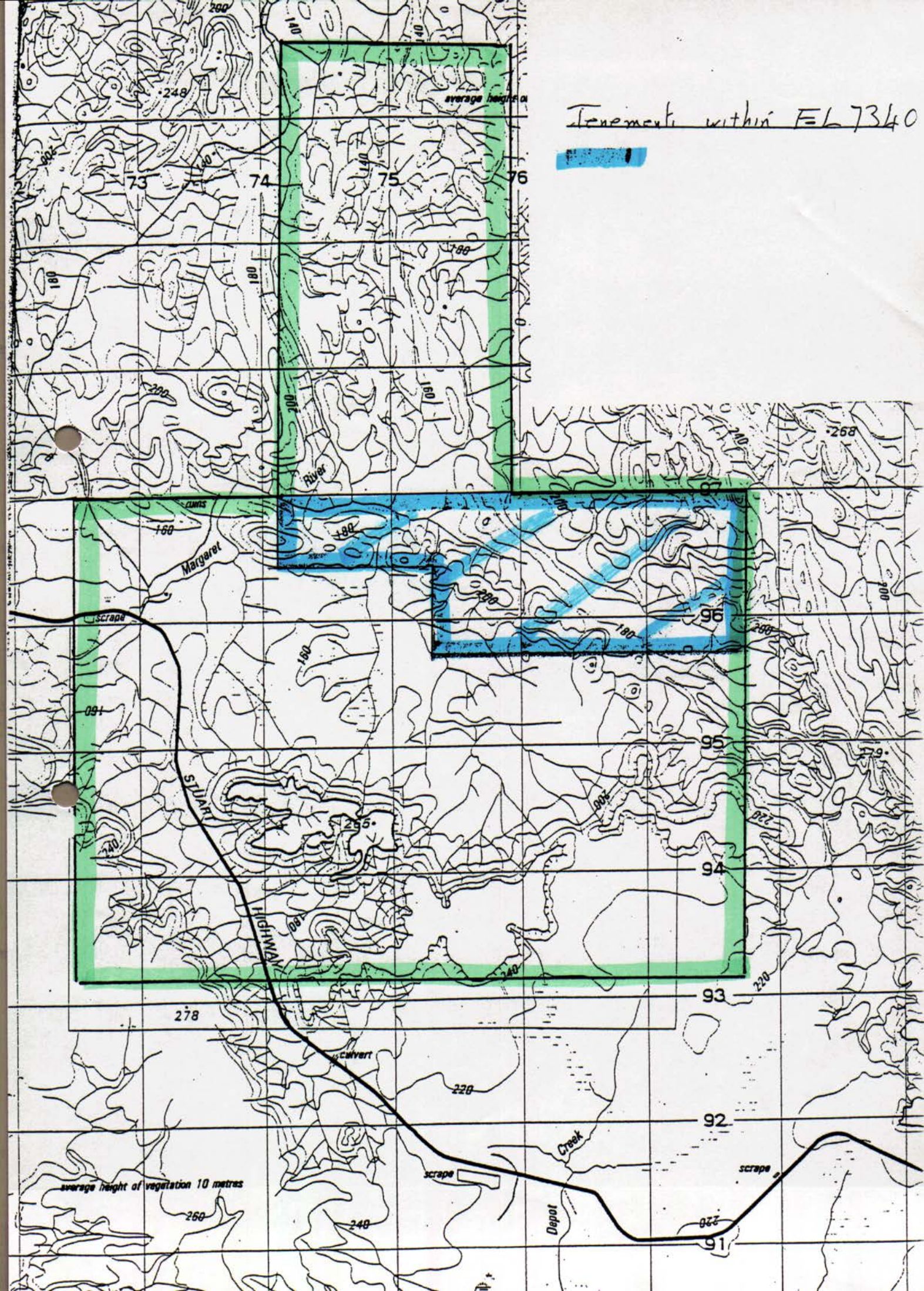
by

R M BIDDLECOMBE

CR 93 / 175

EL7340





INTRODUCTION

EL 7340 is situated approximately 120 miles from Darwin and is easily accessible from the Stuart Highway and Stuart Highway/Grove Hill Road. The area covers the eastern rim of the Golden Dyke Dome and adjacent granite to the south. The easement encompasses part of the Margaret Syncline.

The rim of the domal area is prospective for gold and base metals and little work has been done on it in recent times.

The Margaret Syncline would appear a possible host for base metal occurrences. To the south the granite has numerous dykes present and previous work has indicated some gold values in these. It seems that the area can be treated with three different targets in mind.

An area of leases held by another company does dissect the area but are not anticipated to be a problem.

REGIONAL GEOLOGY

The tenements are situated within the Pine Creek Geosyncline, a tightly to isoclinally folded sequence of mainly pelitic and psammatic (continental to shallow water) Lower Proterozoic sediments with interlayered tuff units. All the lithologies in the area have been metamorphosed mostly to low and in places medium grade metamorphic assemblages. The sequence has been intruded by pre-orogenic dolerite sills and a number of late synorogenic to post-orogenic Proterozoic granitoids. Largely undeformed Middle and Late Proterozoic, Palaeozoic and Mesozoic strata, as well as Cainozoic sediments and laterite overlie the Pine Creek Geosyncline lithologies.

A more complete presentation of the regional geology and Mineralization is given in ¹Nicholson and Eupene (1984).

1. Nicholson, P.M. and Eupene G.S. 1984. Controls on gold Mineralization is the Pine Creek Geosyncline. Aus I.M.M. Conference Darwin NT August 1984.

WORK CARRIED OUT

Numerous samples were taken from the previously located anomalous areas and using a dolly mill crushed and sampled for gold. The object of this was to attempt to locate a mineable small lode capable of being mined and transported to the Cosmo Howley Mine.

During the year the area was included in SEL 7895 as part of a rationalised program for the Yam Creek tenement.

DISCUSSION OF RESULT

Whilst no economic samples were discovered from the samples it is still possible that gold mineralisation exists in economic values in softer, non outcropping formation in the area.

EXPENDITURE FINAL YEAR

Geological Consultants	\$200.00
Literature Search	105.00
Aerial Photos	
Vehicles	475.00
Samples - Dolly Mill	500.00
Camping Costs	370.00
Labour	960.00
Overheads 15%	391.00
	<hr/>
	\$3001.00
	<hr/>

SAMPLE NO.	E.L./LEASE NO.	LOCATION	COMMENTS	Au. g.p.t.			
1	7340	No 1 bottom of spar to	Float	.01			
2	"	No 13 Rim of Dome.	r/c	.01			
3	"		r/c	.03			
4	"		gts Float	.03			
5	"		"	.01			
6	"		old try hole	.02			
7	"		Zamu	.01			
8	"		2nd try hole	.01			
9	"		" " "	.01			
10	"		Gravel over Zamu	.05			
11	"		Rim of Dome	.01			
12	"		"	.01			
13	"		"	.01			
14	"	slack work close granite		.06			
15	"	"		.08			
16	"	"		.05			
17	"	Copper shear		1.07			
18	"	"		.26			
19	"	"		.08			
20	"	"		.11			

Numerous dishes have been taken and indicate better assay should be found.

EL7340

Sample locations.

worked Creek.

17-20

Zone showing pyrite
in Gerow Tuff.

14-16

1-13

approx boundary

sample

STUART
HIGHWAY

278

Calvert

220

Creek

92

scrape

Depot

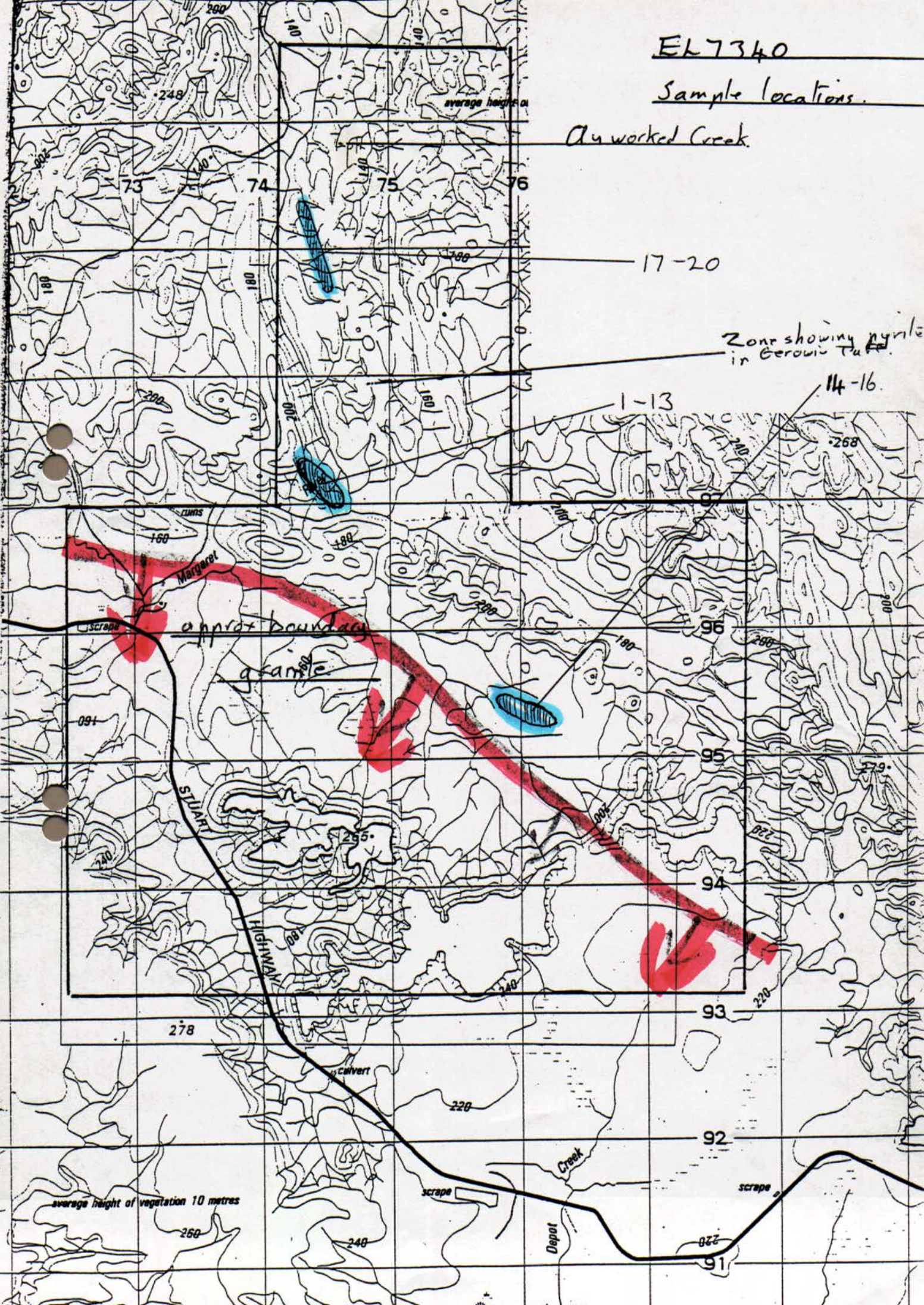
220

91

average height of vegetation 10 metres

260

240



SAMPLE NO.	E.L./LEASE NO.	LOCATION	COMMENTS	estimated		visible gold	
				Au.	g.p.t.		
106 A	7340	loc 1	qtz			-	
107 "	7340	"	qtz	.2 gpt.		✓	
108	7340	"	qtz stock			-	
109	7340	"	" "			-	
110	7340	"	" "			-	
111	7340	"	" "			-	
112	7340	"	" "			-	
113	7340	"	qtz			-	
114	7340	"	qtz	.2		✓	
115	7340	"	2amu qtz iron stain	.3.		✓	
116	7340	"	" " iron stain			-	
117	7340	loc 2	qtz stock			-	
118	7340	"	"			-	
119	7340	"	"			-	
120	7340	"	"			-	
121	7340	"	"			-	
122	7340	"	"			-	
123	7340	loc 3	qtz stock copper (malchite)			-	
124	7340	"	qtz			✓	
125	7340	"	qtz malachite			-	

[illegible]

