



Northern Gold NL ACN. 009 620 937

Lot 128 Finlay Rd Adelaide River, N.T. 0846 Ph 089 767023 Fax 089 767025

EL 8978
1995/96 ANNUAL REPORT

15.06.95 - 14.06.96

Fenton 1:50,000 (14/5-1) Map Sheet

Title Holder:- Territory Goldfields N.L.

Managed by:- Northern Gold N.L.

OPEN FILE

CR 96 / 550

July 1996

Author:- N.Socic

NTDME

Northern Gold N.L., Adelaide River

Northern Gold N.L., Perth Office

TABLE OF CONTENTS

LIST OF FIGURES	2
1.0 SUMMARY	3
2.0 LOCATION AND TENURE	4
3.0 GEOLOGY	4
3.1 Regional Geology	4
3.2 Local Geology	4
4.0 PREVIOUS EXPLORATION	5
5.0 1995/96 EXPLORATION	5
6.0 PROPOSED PROGRAMS FOR 1996/97	5
7.0 1995/96 EXPENDITURE	6

LIST OF FIGURES

Figure 1 - Tenement Location Plan

Figure 2 - Local Geology

Figure 3 - Satellite Image Map

1.0 SUMMARY

EL 8978, consisting of one graticular block, 3 square kilometres in area, was granted to Dominion Gold Operations Pty. Ltd. on the 15th of June 1995 for a period of two years. The tenement is now held by Territory Goldfields N.L. and is managed by Northern Gold N.L.

Northern Gold N.L. completed a work program involving digital data acquisition and manipulation to assess the structural geology and determine the best method of exploration to be used on the licence.

The covenant for the 1995/96 year of tenure was **\$4,600**, while the expenditure totalled **\$5,295**.

2.0 LOCATION AND TENURE

EL 8978 is located 1 kilometre north-east of Hayes Creek on the Stuart Highway and approximately 150 kilometres south-east of Darwin. The licence is situated within the Fenton 1:50,000 map sheet (14/5-I). It is comprised of one graticular block, 3 square kilometres in area, lying between latitudes 13°34' south and 13°35' south and longitudes 131°28' east and 131°29' east (Figure 1).

Access is via the Stuart Highway and tracks throughout the area.

The licence area was granted to Dominion Gold Operations Pty. Ltd. on the 15th of June 1995 for a period of two years.

The tenement is now held by Territory Goldfields N.L., and is managed by Northern Gold N.L.

3.0 GEOLOGY

3.1 Regional Geology

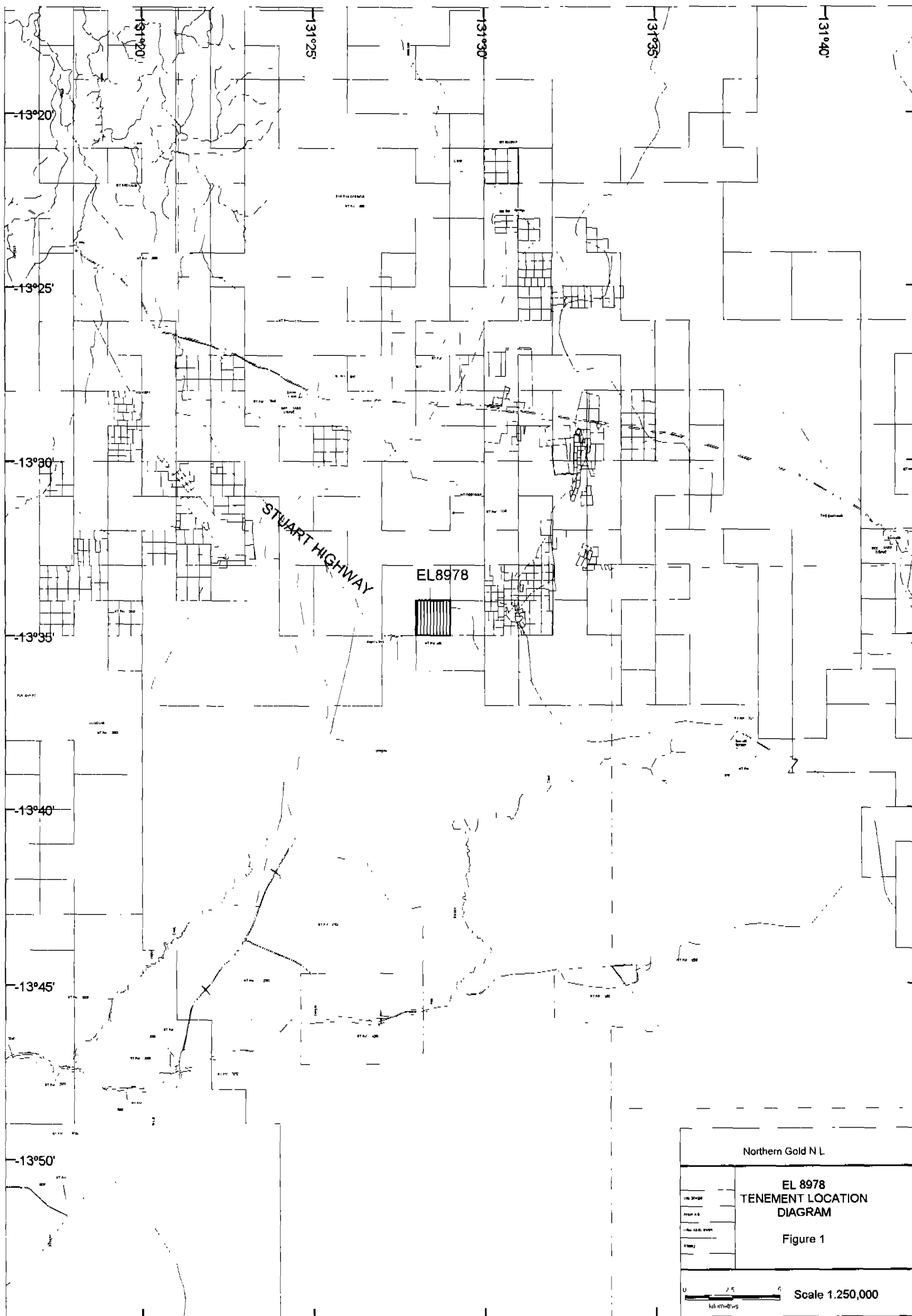
EL 8978 is situated within the Pine Creek Geosyncline, a tightly to isoclinally folded sequence of mainly pelitic and psammitic Lower Proterozoic sediments with interlayered tuff units. All the lithologies in the area have been metamorphosed to low, and in places, medium grade, metamorphic assemblages. For the purpose of this report, the prefix meta- is implied, but omitted from the rock names and descriptions.

The sequence has been intruded by pre-orogenic dolerite sills of the Zamu Dolerite and a large number of late syn-orogenic to post-orogenic Proterozoic granitoids. Largely undeformed Middle and Late Proterozoic, Palaeozoic and Mesozoic strata, as well as Cainozoic sediments and laterites, overly the Pine Creek Geosyncline.

3.2 Local Geology

The geology of EL 8978 consists of folded sequences of Mount Bonnie Formation and the Gerowie Tuff. These rocks have been faulted against the Depot Creek Sandstone and the intruded McMinns Bluff Granite in the south of the licence. This fault trends north-east to south-west through the area.

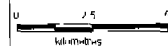
Another fault trends north-northeast to south-west through the north western corner of the tenement, along a possible fault axis (Figure 2).



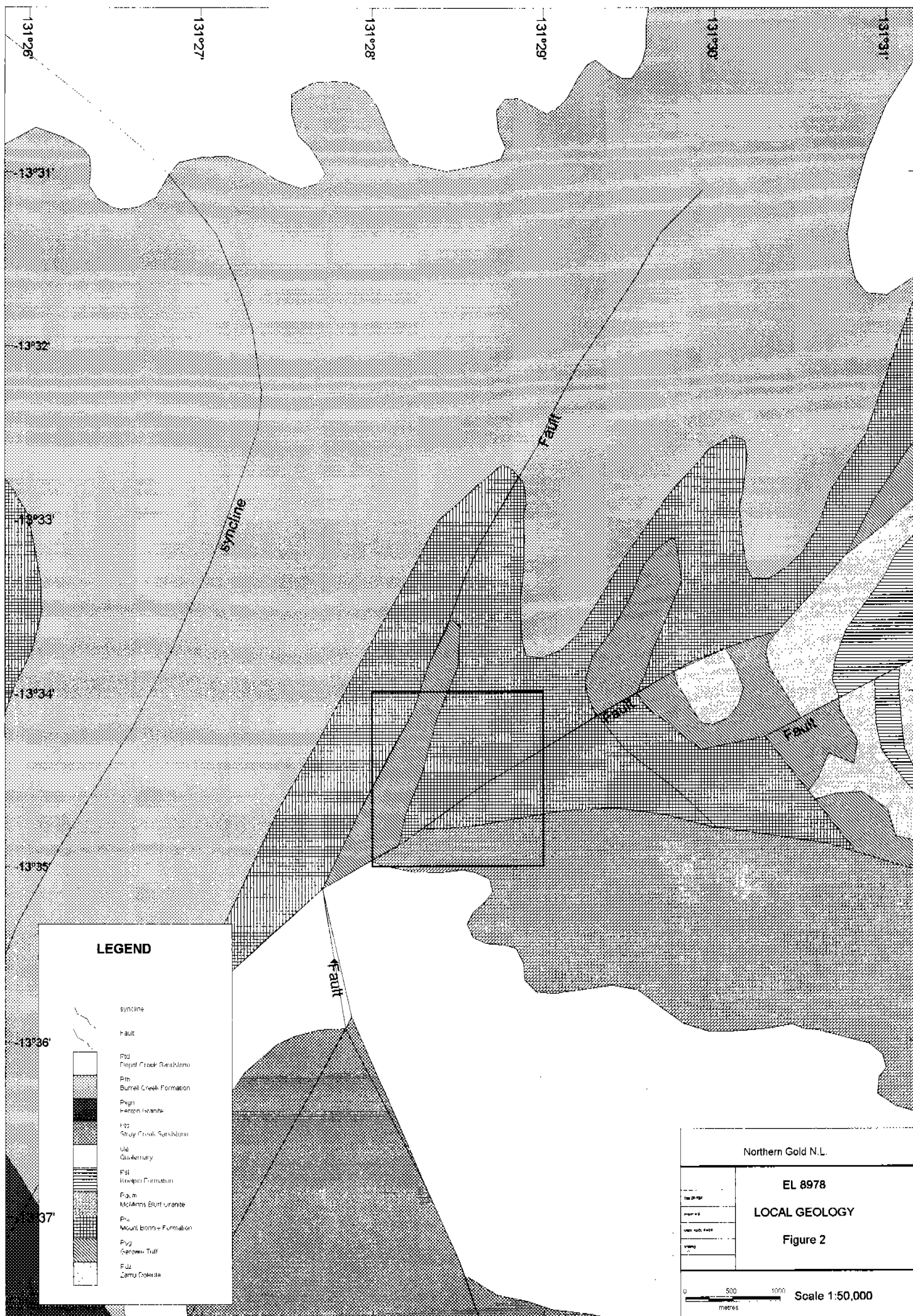
Northern Gold N.L.

**EL 8978
TENEMENT LOCATION
DIAGRAM**

Figure 1



Scale 1:250,000



4.0 PREVIOUS EXPLORATION

No previous work has been carried out on EL 8978.

5.0 1995/96 EXPLORATION

Northern Gold N.L. completed a work program involving digital data acquisition and manipulation. Landsat Imagery, SPOT Imagery and AGSO mapping were obtained and used in conjunction with aerial mapping to determine the best method of exploration to be used on the licence.

GIS and satellite imagery were used to log soil types, indicating that the region comprises mainly laterised lower saprolite.

Satellite imagery was also used to interpret the structural geology of the region (Figure 3).

Interpretation of the GIS and remote sensing imagery shows the McMinns Bluff Granite extending approximately 400 metres into the southern part of the tenement. The metamorphic aureole extends a further 650 metres into the licence from the granite boundary.

A fault can be seen trending northeast-southwest through the tenement, bounding the granite and the rocks of the Mount Bonnie Formation and Gerowie Tuff.

6.0 PROPOSED PROGRAMS FOR 1996/97

Exploration for the 1996/97 year of tenure will also include programs originally designated to the 1995/96 year of tenure.

The programs to be completed are as follows:-

1995/96 Programs

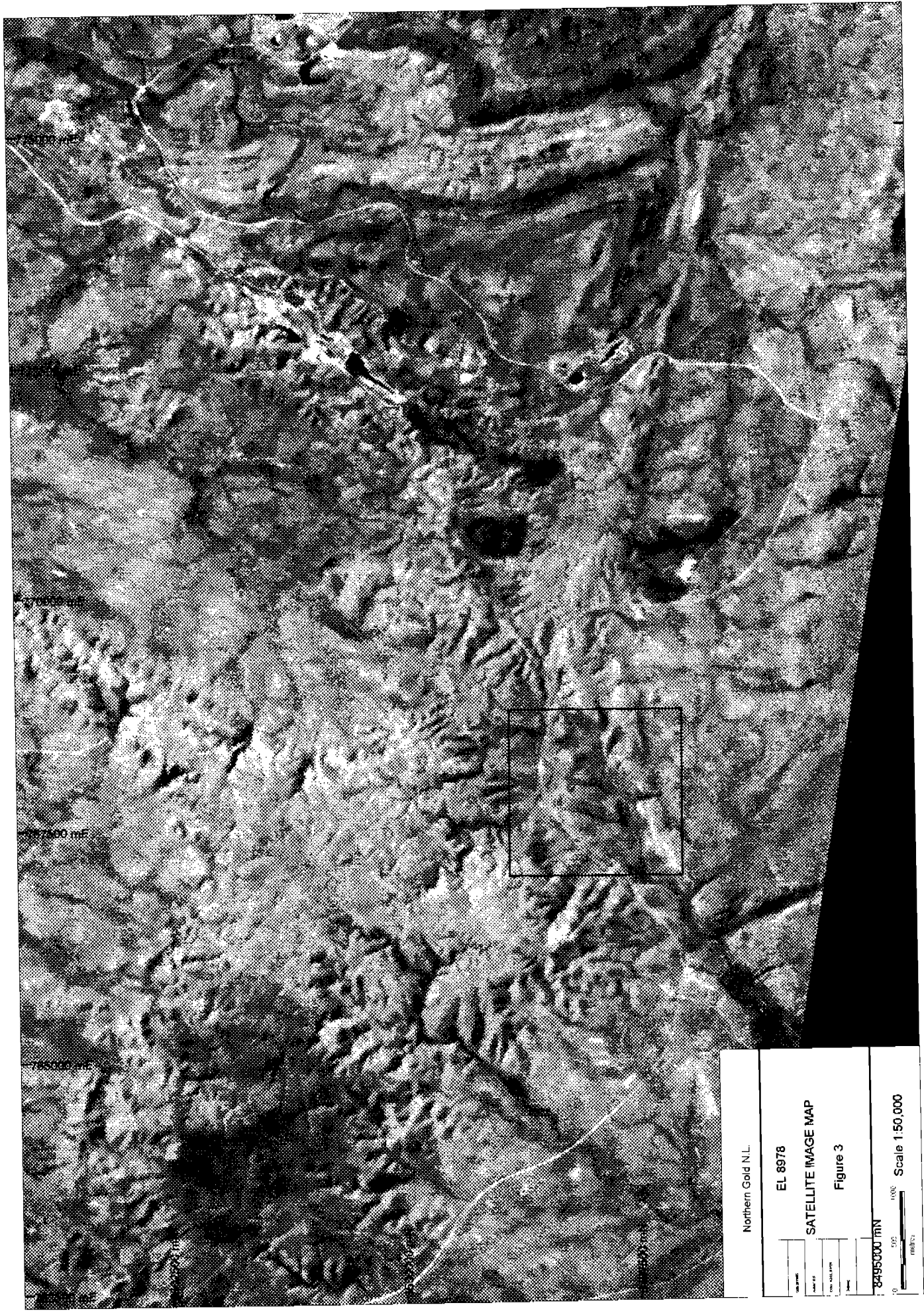
Data Review, Stream Sediment Sampling, Soil Sampling (400 metres x 100 metres), Rock Chip Sampling and geological mapping.

1996/97 Programs

RAB/RC drilling and assaying as required.

An estimation of the cost of these programs is \$8,000.

The tenement will be re-evaluated by Northern Gold N.L. in the context of its other tenement holdings in the area, and the increased budget for exploration on regional tenements. A further program of work may be added later in the year.



Northern Gold N.L.

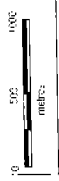
EL 8978

SATELLITE IMAGE MAP

Figure 3

8495000 mN

Scale 1:50,000



7.0 1995/96 EXPENDITURE

The following is a breakdown of the costs incurred in the 1995/96 year of tenure for EL 8978:-

<u>COSTS</u>	<u>AMOUNT</u>
Report Compilation	300
Data Review	200
Tenement Management	500
AGSO Mapping	425
Satellite Imagery & Manipulation	1,500
GIS Manipulation	700
Salaries	980
	<hr/>
Subtotal	4,605
Administration @ 15%	690
	<hr/>
TOTAL	<u>\$5,295</u>

Table 1