

Aquitaine Australia Minerals Pty. Ltd.

MINES BRANCH
GEOLOGICAL LIBRARY

OPEN FILE

E.L. 785 'MT. SEPTIMUS EAST'

FINAL REPORT
FOR THE PERIOD ENDING
27TH NOVEMBER, 1974

Distribution:

Minerals (2)
S.N.P.A. (1)
Manager/Archives (1)
Kununurra (1)
Mines Department (1)

By: P.B. d'Auvergne

20th January, 1975

MG: 511

C O N T E N T S

ABSTRACT

- 1.0 INTRODUCTION
- 2.0 EXPLORATION ACTIVITY 1974
 - 2.1 Induced Polarization
- 3.0 CONCLUSIONS & RECOMMENDATIONS
- 4.0 REFERENCES
- 5.0 EXPENDITURE

P L A T E S

- PLATE 1 LOCATION OF E.L. 785
- PLATE 2 SKETCH MAP OF THE POLICEMAN
WATERHOLE AREA
- PLATE 3 LINE 2 (EXTENSION) DIPOLE -
DIPOLE IP PROFILE

ABSTRACT

Results of field work involving dipole-dipole IP, ground magnetometry, rotary percussion drilling, and geochemistry during 1973 were inconclusive. During 1974 a brief dipole-dipole survey was undertaken. Again results were not encouraging and it was decided no further work was warranted.

Because of the apparent low potential of E.L. 785 and the limited access to the area, it is recommended that the licence is allowed to expire when it comes due for renewal on 27th November, 1974.

1.0 INTRODUCTION

As no outcrops of Burt Range Formation - the formation which is known to contain Pb-Zn mineralisation elsewhere in the Bonaparte Gulf Basin - have been located on E.L. 785, sub-surface exploration techniques are necessary.

During 1973 dipole-dipole IP, ground magnetometry, rotary percussion drilling, and geochemistry did not locate any definite Burt Range Formation and no indications of any possible mineralisation were found [see Ramdohr (1973)].

As it was possible that our 1973 work had all been to the east of any Burt Range Formation, this year one of the 1973 survey lines was extended in a north-west direction and 3000 m of dipole-dipole IP was read.

2.0 EXPLORATION ACTIVITY 1974

2.1 Induced Polarization

Only very limited work was carried out on E.L. 785 this year. Early in the field season exploration on E.L. 415 immediately south of E.L. 785 showed that E.L. 415 was of low potential and this E.L. was subsequently relinquished.

Exploration on E.L. 673 to the north of E.L. 785 revealed Burt Range outcrops previously not known. However, these could not be traced south onto E.L. 785.

At the conclusion of an IP survey on E.L. 673, a brief survey was undertaken on E.L. 785. Three dipole-dipole spreads were read between 19 NW and 47 NW on the

extension of the 1973 survey line 2. Results were very similar to those obtained elsewhere on the E.L. during 1973. No significant anomaly was found (see Plate 3).

3.0 CONCLUSIONS & RECOMMENDATIONS

The lack of encouraging results on E.L. 785 during the last two seasons suggests the area has a low potential and consequently it is recommended that the licence is allowed to expire when it becomes due for renewal on the 27th November, 1974.

4.0 REFERENCES

Ramdohr, R. (1973), Exploration Licence 785. Annual Report for the period ending 27th November, 1973 (MG: 353), unpubl.

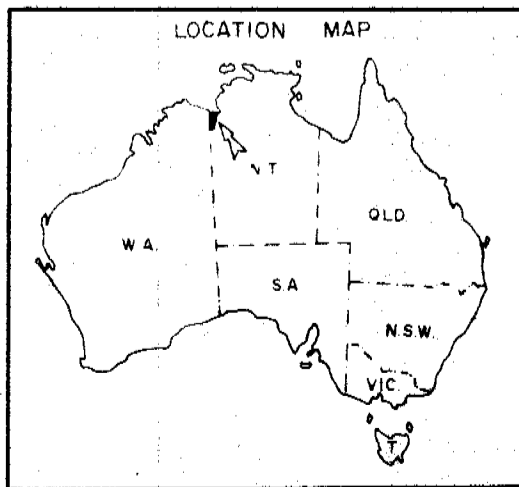
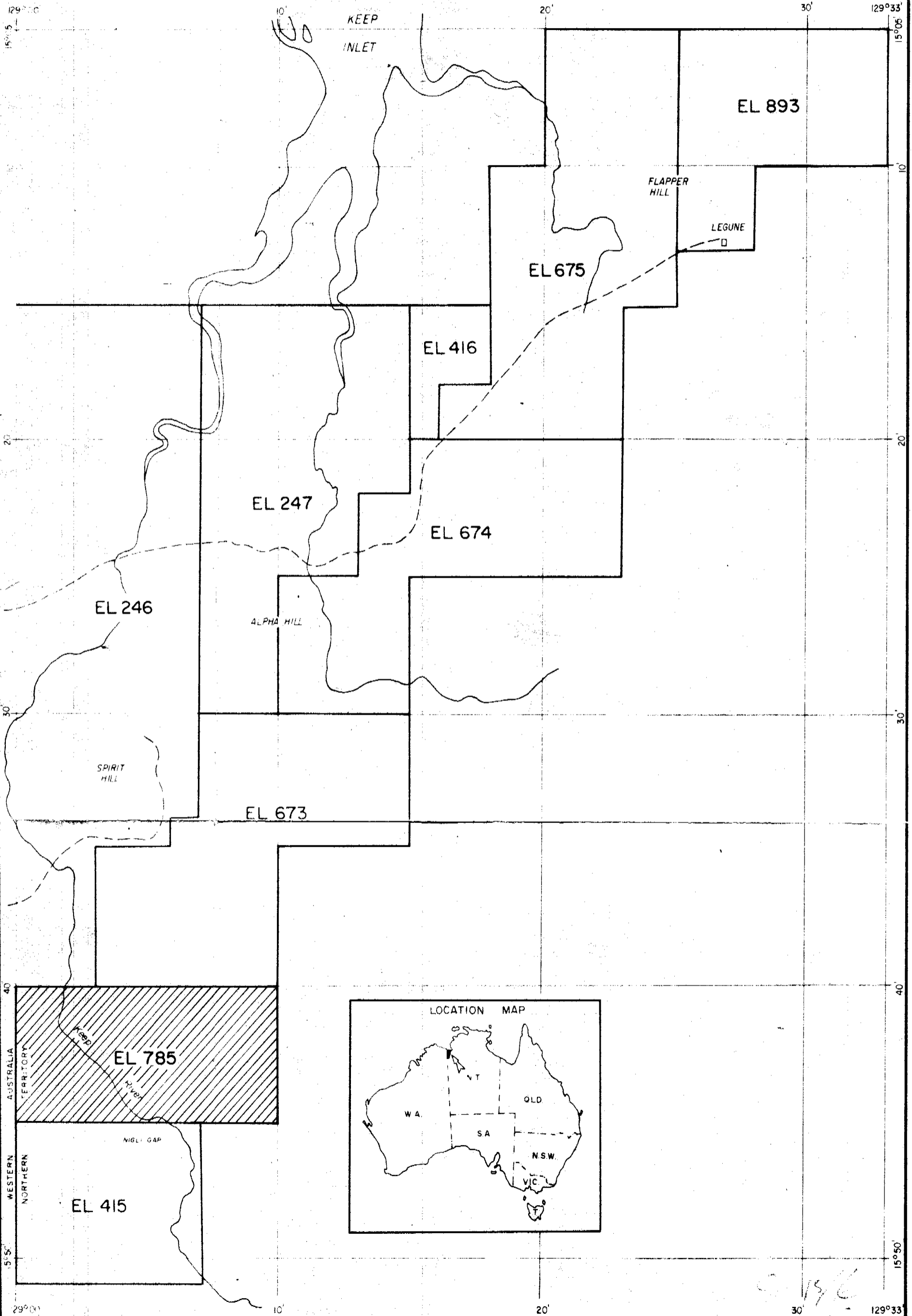
5.0 EXPENDITURE

	\$
Salaries - Residents	476.88
Salaries & Associated Expenses - Temporary Personnel	475.85
Miscellaneous Personnel Expenses	19.71
Accommodation & Associated Expenses	69.61
Motor Vehicle Expenses & Rent	574.47
Air Travel - Personnel	641.12
Air Transport & Freight - Materials	65.43
Maps, photographs, mosaics	60.77
Positioning - Surveying	173.01
Miscellaneous Land Base Expenses	101.47
Rate Per Foot	1,271.25
Mobilisation - Demobilisation (Seismic)	164.07
Induced Polarization	2,409.47
Bits	207.52
Diamond Bits or Core Bits	354.93
Electricity & Gas	19.91
Consulting: S.N.P.A. - Others	533.73
Other Analyses	203.06
Repairs & Maintenance	98.76
Building Rentals - Storage	69.23
Postage & Duties	16.29
Telecommunications	34.35
Taxes & Rates	26.46
Insurance - Others	75.48
Operations - Labour & Associated Expenses	29.33
Mineral Geology - Labour & Associated Expenses	1,916.54
Mineral Geology - General Expenses	287.50
Administration	1,154.93
Drafting & Printing	204.05
	<u>11,735.18</u>

Note: These figures are subject to adjustment when the final figures for 1974 become available.

LOCATION OF EL 785

Scale 1 / 250,000



AUTHOR: P. D'AUVERGNE
 DEPT: Mineral Geology
 BASE MAP: 410 1:250,000

DATE: 6-11-73
 DRAWN BY: S. Williams
 DRG. NO.:

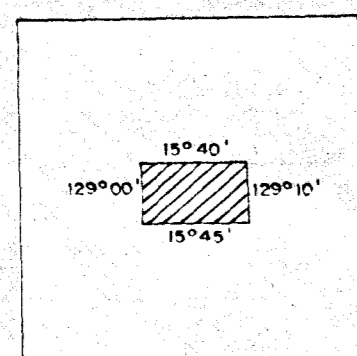
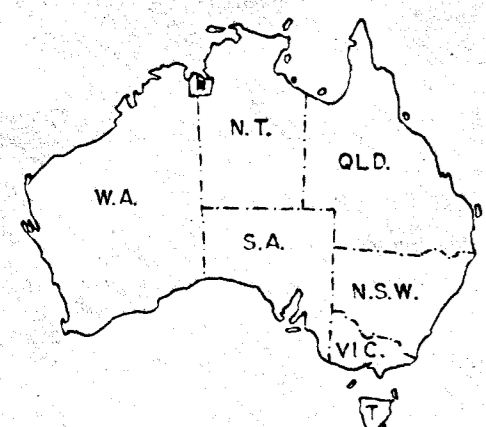
Handwritten signature or initials

EL 785

"POLICEMAN WATERHOLE" AREA

SKETCH MAP

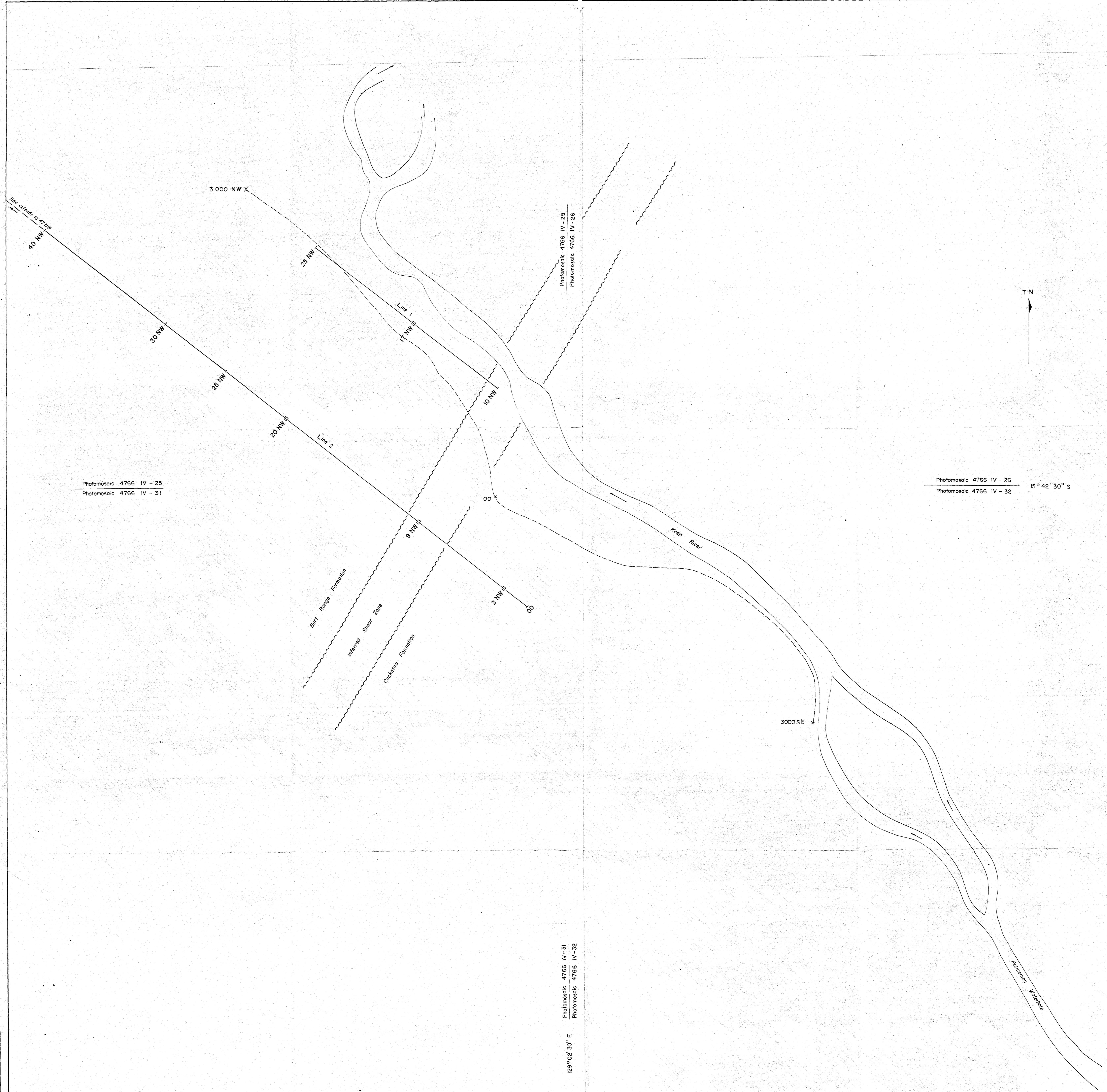
Scale 1:10000
KILOMETRES 0.2 0.1 0 0.2 0.4 0.6 0.8 KILOMETRES



DATE 12-11-73	AUTHOR CWD R. Romdahl	ADM'S
DRAWN BY S. Williams	DEPT Mineral Geology	
DRG CWD	SCALE MAP	

LEGEND

- Rotary Percussion Drill Hole
- Approximate Limits Of Shear Zone



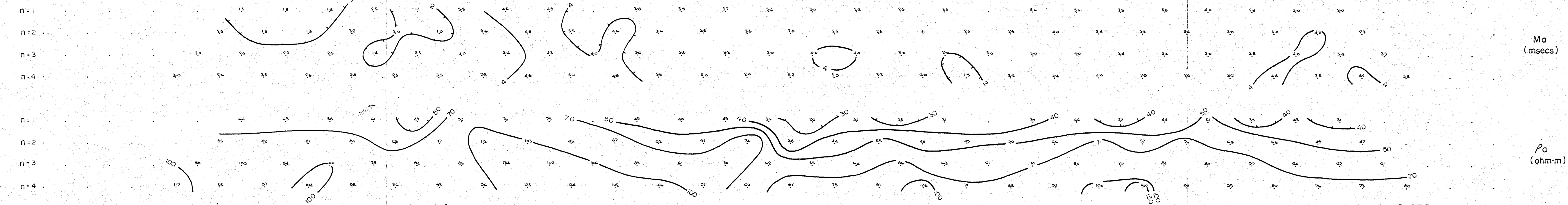
Photomosaic 4766 IV - 25
Photomosaic 4766 IV - 31

Photomosaic 4766 IV - 26
Photomosaic 4766 IV - 32
15° 42' 30" S

129° 02' 30" E
Photomosaic 4766 IV - 31
Photomosaic 4766 IV - 32

Policeman Waterhole

47NW 46NW 45NW 44NW 43NW 42NW 41NW 40NW 39NW 38NW 37NW 36NW 35NW 34NW 33NW 32NW 31NW 30NW 29NW 28NW 27NW 26NW 25NW 24NW 23NW 22NW 21NW 20NW 19NW 18NW 17NW

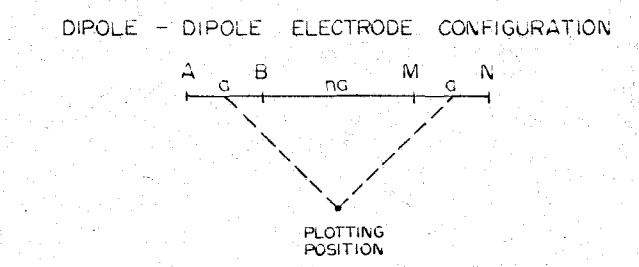


n = 1
n = 2
n = 3
n = 4
n = 1
n = 2
n = 3
n = 4

M_a
(msecs)

P_a
(ohm-m)

Transmitter type: Huntac 7.5 KVA.
Timing sequence: 2sec on / 2 sec. off.
Receiver type: Scintrex IPR7.
Integration time: 450 to 1100msecs after cut off.
IP measured over one current pulse.



11633 PLATE 3 MG. 511

AQUITAINE AUSTRALIA MINERALS PTY. LTD.

INDUCED POLARIZATION and RESISTIVITY SURVEY

POLICEMAN WATERHOLE

LINE: 2 (extension) CR1975-0006

Array: Dipole - Dipole	Dipole length: 100 m
Date: August 1974	Job No: 85-430 Scale: 1:5000