



OLYMPIA
RESOURCES LIMITED

NORTHERN TERRITORY

EXPLORATION PROGRAMME

January, 2008 – December, 2008

John Baxter
Susan Stewart

January, 2008

CONTENTS

Summary	3
NT Tenements	5
NT Introduction	8
HARTS RANGE PROJECT	11
Aquifer Mapping	12
Production Bore Construction	12
Pipeline Flora and Fauna Studies	12
Baseline Ecological Surveys	12
Harts Range Project Abrasive-Extension to Resources	13
HUCKITTA PROJECT	14
Reconnaissance Mapping	14
HALE RIVER PROJECT	15
ONGEVA PROJECT	16
JINKA URANIUM PROJECT	17
BIBLIOGRAPHY	18

Figures

Figure 1 Location of exploratory water bores east of Spinifex Bore (new bores in black)	11
Figure 2 Proposed holes Harts Range Project (new holes in dark blue)	13
Figure 3 Proposed drill holes (dark blue) on Huckitta Project 2008, Scale 1:200,000	14
Figure 4 Hale River Tenement, January, 2008	15
Figure 5 Ongeva South Proposed Drilling 2008	16

Tables

Table 1 Renewal History Olympia Tenements Northern Territory	3
Table 2 Summary of recommended Expenditure until June 2008, NT Projects	6
Table 3 Summary of recommended Expenditure from June 2008 to Dec 2008, NT Projects	6
Table 4 Olympia Tenements Holders and Areas	9
Table 5 Estimates of Expenditure in 2008	10

Summary

The main thrust of the 2007 programme associated with the Aturga abrasive deposit was the definition of the Spinifex Borefield. Fifteen water bores were drilled on EL24360 in the continuing studies on a potential source of water in the Ambalindum Sandstone. Pump testing of these bore was completed by Rockwater, as well as recovery measured after airlifting on two bores. The results of the pump tests on the bores and numerical modelling of extraction indicate that a borefield located 4 to 6km north of the Plenty Highway should supply process water at 1210 cubic metres/day (14 litres/second) for more than five years for Olympia Resources' Harts Range Project (Rockwater, 2007).

Table 1 Renewal History Olympia Tenements Northern Territory

Tenement	Sub Blocks	Area	Grant Date	Expiry Date	Renewal 1 Date	Renewal 2 Date
<i>EL 9190*</i>	6		15/08/1995	14/08/2005	15/08/2001	15/08/2003
<i>EL 9191**</i>	16		15/08/1995	14/08/2005	15/08/2001	15/08/2003
EL 25098	6	18.98km ²	2/10/2006	1/10/2012		
EL 25099	30	87.78km ²	4/10/2006	13/10/2012		
EL 9410	41	127.8 km ²	28/11/2003	27/11/2009		
EL 9851	53	163.7 km ²	24/01/2002	23/01/2008		
EL 10150	29	91.69 km ²	23/01/2002	22/01/2008		
EL 10331	15	47.29 km ²	24/01/2002	23/01/2008		
EL 10372	12	34.43 km ²	23/01/2002	22/01/2008		
EL 23087	25	79.08 km ²	27/01/2005	26/01/2011		
EL 23088	14	44.31 km ²	27/01/2005	26/01/2011		
EL 23089	53	167.8 km ²	27/01/2005	26/01/2011		
EL 23090	8	25.33 km ²	27/01/2005	26/01/2011		
EL24360	61	190.0 km ²	15/9/2006	14/9/2012		
EL 24378	151	475.7 km ²	15/9/2006	14/9/2012		
EL 24641	64	202.5 km ²	15/9/2006	14/9/2012		
ML23868		2530ha	12/8/2005	11/8/2030		
MLS171		100ha	Application			

*Replaced by EL 25098

**Replaced by EL 25099

The latter half the year was spent on a Uranium exploration program where a total of 165 selected sites were inspected by helicopter. These sites were identified from previous studies which used the Northern Territory Geological Society airborne radiometric database. The helicopter reconnaissance identified one specific uranium anomaly, over weathered bedrock near Denara Bore, as substantial. It also upgraded the uranium prospectivity of the broad alluvial targets underlying the Marshall and

Plenty Rivers systems. It confirmed prospectivity for other areas of basement rock and indicated technique modifications required for future exploration (Roberts, 2007).

Exploration in the Harts Range in 2008 will focus on extending the water resources at Spinifex Bore (E24360) and assessing the abrasive resources east of the Aturga Project (E25098 & 24360) and the Huckitta Project (E24378, 24641 & 10372). Reconnaissance exploration for abrasives will be conducted on the Ongeva Project (E10331 & 25099) and Hale River Project (E9410) if access can be arranged.

NT Tenements

The tenements held by Olympia and the renewal history is shown in Table 1.

Olympia has a large holding of granted exploration licences in the Northern Territory that need to be explored to determine whether they contain useful resources or warrant keeping in the portfolio. In 2007 the reconnaissance surveys of the Marshall River and Jinka tenement groups were completed. There does not appear to be any abrasive potential in these tenements and it is proposed to seek joint venture partners to assess the uranium potential of the projects in 2008. DBIRD has informally indicated that some of the tenements have had insufficient work completed to warrant further exemptions.

In the period to December 2008 this report proposes that expenditure of \$922,000 be budgeted for exploration (Table 2 and Table 3) with \$132,000 before June 30th, 2008.

The main thrust will be to:

- Complete the preparation to begin mining at the Aturga Project
- Extend the aquifer of the Ambalindum Sandstone east of Spinifex Bore
- Develop and test up to 5 more bores in the Spinifex Borefield
- Assess the potential for coarse grained garnet/AMH on the south floodplain of the Plenty River
- Review the mineralogy of abrasives on the Plenty River Floodplain
- Completion of negotiations on the Mining Agreement with the CLC
- Establish a village at Harts Range after acquiring land west of the Police Station
- Ecological studies of the pipeline and mine area
- Site clearance by AAPA of the Ongeva Creek North EL 10331, and South EL 25099
- Extension of the resources of abrasives to the east of Aturga
- Site clearance for reconnaissance surveys on E9410, Hale River
- CLC clearance on:
 - Drill traverses across the Plenty River at 500m line spacings and 20m hole spacing along the Plenty River from the eastern boundary of E25098 for about 10km
 - Drill traverses at about 500m line spacings and 20m hole spacing along Aturga Creek from the northeast corner of ML23868 until it meets EI 25098
 - Drill traverses on EL 24360 to follow-up the drilling done in 2006 west of Spinifex Bore on the floodplain of the Plenty River with drill traverses at about 500m line spacings and 20m hole spacing north-north-easterly from EL25098
 - Reconnaissance drill traverses on EL24378 approximately 5km apart perpendicular to the river with holes about 100m apart for 20km east and west of Jamaica Bore.
 - Reconnaissance drill traverses on EL 24641 approximately 1km apart perpendicular to the river on the northern floodplain with holes about 100m apart from the boundary of Huckitta and Jinka to the west for 5km
 - Denara Bore (H258) between S22° 57.046' E136° 15.894 and S22° 57.293' E136° 16.013'

- H102 (EL25099) along the margins of a quartz vein for 100m radius about S23° 08.799' E134° 35.885'
- H133 on EL 24360 between S22° 58.719' E134° 58.487' and S22° 59.055' E134° 58.982'
- H229 on EL 23089 covering the hornfels around the pegmatite for 100m radius around S22° 55.078' E136° 04.861'
- Drill traverses approximately 500m either side of the river with holes every 50m across the lower Marshall River at approximately:
 - 5km easterly from Ghost Gum Bore
 - 7km north-westerly from Jervois Homestead
 - 5km easterly from Jervois Homestead
 - 10km easterly from Denara Bore
- Drill traverses across the Plenty River about 500m either side of the river with holes every 50m at approximately:
 - 2.5km easterly from Prosser Bore
 - 5km easterly from Jinka Homestead site
 - 2km easterly from Jamaica Bore
- Drill traverses on tributaries of the Plenty River being about 500m in line length and 50m hole spacing at:
 - Kanandra Gap Yard trending southwest-northeast
 - approximately 3km southwest of Williams Bore with an easterly traverse across Entire Creek
- Tenement rationalisation prior to production from Aturga

Table 2 Summary of recommended Expenditure until June 2008, NT Projects

Task	Time Required	Operator	Cost Estimate
JV Promotion Jinka CLC Mining Agreement	3 days	Olympia	\$6,000
Aquifer Research Aquifer mapping Ecology Studies	5 days	Olympia	\$10,000
CLC Clearances CLC Negotiation	2 weeks	Rockwater	\$15,000
Huckitta Project Reconnaissance	2 days	Olympia	\$5,000
AAPA Clearance Ongeva Project Reconnaissance	10 days	Low Ecology	\$8,000
	12 days	CLC	\$25,000
	5 days	Olympia & CLC	\$10,000
	5 days	Olympia	\$10,000
	2 days	AAPA	\$12,000
	3 days	Olympia	\$6,000
Contingency			\$25,000
Total			\$132,000

Table 3 Summary of recommended Expenditure from June 2008 to Dec 2008, NT Projects

Task	Time required	Operator	Cost Estimate
Water Explore	2 weeks	Underdale/Rockwater	\$45,000

Drilling			
Production Bores	6 weeks	Underdale Drillers	\$252,000
Hydrogeology	20 days	Rockwater	\$30,000
Analysis Water		Rockwater	\$10,000
Drilling			
Ecology Baseline	7 days	Low Ecology	\$13,000
HM Exploration	~22 days	? Orbit/Bostich	\$124,000
Drilling			
HM Analyses		Diamantina	\$37,000
Mineralogy	Occasional	Diamantina	\$5,000
HM Consultant	40	?	\$36,000
Hale River	3 days	Olympia	\$20,000
Ongeva Creek	3 days	Olympia	\$22,000
U Exploration	~19 days	? Orbit/Bostich	\$76,000
Drilling			
U Analyses		Analabs	\$20,000
U Consultant	25 days	?	\$30,000
Contingency			\$70,000
Total			\$790,000

The expenditure assigned to drilling assumes \$4,000 per day and assumes that about 200m will be completed every day. It also assumes that 60% of samples will be analysed over 1.5m intervals.

NT Introduction

Olympia has granted tenements and some in application the Northern Territory. The tenements have been assigned project status as shown in Table 4 .

Olympia has a substantial tenement holding along the valleys of the Plenty, Marshall and Hale Rivers. Some of the tenements have been renewed for extended terms and the history of the renewals is shown in Table 1.

Ownership of the Olympia tenements and the status with respect to access from either the CLC or AAP is shown in Table 4. The process of clearance is ongoing. It is intended in 2008 to apply for AAPA clearance on EL10331 as there has been no progress made by the CLC and the Department is keen for us to make a decision on the future of the tenement which we have not been able to access up until now. Action for AAPA clearances in 2008 include:

- Transfer AAPA Clearance C200/094 from EE 9190 to EL 25098
- Transfer AAPA Clearance C1998/012 from EL 9191 to EL 25099
- Apply for AAPA Clearance on EL 10331

It is noted that *“Written notice to CLC is required of any reconnaissance surveys, including a description of the activities and their location. The ILUA agreement provides for 28 days before undertaking any activity on the licences.”*

Clearance action required for the CLC includes:

- Exploration drilling on EL 25098, 24360 & 24378 along the Plenty River (proposed drill sites in Appendix 1)
- Exploration drilling on EL 24378, 24641 & 10372 on the Plenty and Entire Creek (proposed drill sites in Appendix 1)
- Clearance for drilling along tracks and roads in the Hale River tenement
- Exploration drilling along the traverse on EL 25099 (proposed drill sites in Appendix 1)
- Exploration and production water bores on E24360 (proposed drill sites in Appendix 2)
- Sites for uranium exploration, when determined

Table 4 Olympia Tenements Holders and Areas

Tenement	Status	Holder/s	Area	CLC Clearance	AAPA Certificate
MLS 171 (A)	Application 22-02-96	John W Benger	100 ha		
EL 9190	Granted 15-08-95 Extended to 14-08-2005	Olympia Resources Limited	6 blocks	Preliminary Exploration	C2000/094
EL 9191	Granted 15-08-95 Extended to 14-08-2005	Olympia Resources Limited	16 blocks		C1998/012
EL 9410	Granted 28-11-2003 Expires 27-11-2009	Olympia Resources Limited	41 blocks		
EL 9851	Granted 24-01-02 Expires 23-01-2008	Olympia Resources Limited	53 blocks	Preliminary Exploration	
EL 10150	Granted 23-01-02 Expires 22-01-2008	Olympia Resources Limited	29 blocks	Pipeline and Mining	C2000/094
EL 10331	Granted 24-01-02 Expires 23-01-2008	Olympia Resources Limited	15 blocks		
EL 10372	Granted 23-01-02 Expires 22-01-2008	Olympia Resources Limited	12 blocks	Preliminary Exploration	
EL 23087	Granted 27-01-2005 Expires 26-01-2011	Olympia Resources Limited	25 blocks	Preliminary Exploration	
EL 23088	Granted 27-01-2005 Expires 26-01-2011	Olympia Resources Limited	14 blocks	Preliminary Exploration	
EL 23089	Granted 27-01-2005 Expires 26-01-2011	Olympia Resources Limited	53 blocks	Preliminary Exploration	
EL 23090	Granted 27-01-2005 Expires 26-01-2011	Olympia Resources Limited	8 blocks	Preliminary Exploration	
ML 23868	Granted 12-8-2005 Expires 11/8/2030	Olympia Resources Limited	2,543 ha	Mining	C2004/167 C2006/003
EL 24360	Granted 15-9-2006 Expires 14-9-2012	Olympia Resources Limited	61 blocks	Water Bores	
EL 24378	Granted 15-9-2006 Expires 14-9-2012	Olympia Resources Limited	155 blocks	Preliminary Exploration	
EL 24641	Granted 15-9-2006 Expires 14-9-2012	Olympia Resources Limited	64 blocks	Preliminary Exploration	
EL 25098	Granted 4-10-2006 Expires 3-10-2012	Olympia Resources Limited	6 blocks		
EL 25099	Granted 4-10-2006 Expires 3-10-2012	Olympia Resources Limited	30 blocks		

This report presented the exploration programme and expected costs in two phases. The total costs are summarised in Table 5.

Table 5 Estimates of Expenditure in 2008

Tenements	Rent 2008 Add GST	Covenant	Budget to June '08	Budget July'08-Dec'08
ML 23868	\$ 25,430.00	\$		
EL 10150	\$ 1,160.00	\$ 80,000.00	\$18,000	\$13,000
EL 25098	\$671.00	\$ 50,000.00	\$9,000	\$45,000
EL 24360	\$ 610.00	\$ 27,000.00	\$8,000	\$382,000
EL 25099	\$ 330.00	\$ 30,000.00	\$9,000	\$26,000
EL 10331	\$ 600.00	\$ 14,000.00	\$8,000	\$11,000
EL 24378	\$ 1,661.00	\$ 30,000.00	\$9,000	\$22,000
EL 24641	\$ 704.00	\$ 30,000.00	\$8,000	\$39,000
EL 10372	\$ 480.00	\$ 13,400.00	\$9,000	\$35,000
MLS 171	\$ 1,000.00			
EL 9410	\$ 451.00	\$ 26,500.00		\$20,000
EL 9851	\$ 2,120.00	\$ 7,500.00	\$15,000	\$29,000
EL 23090	\$ 80.00	\$ 19,000.00	\$3,500	\$22,000
EL 23088	\$ 140.00	\$ 19,000.00	\$3,500	\$25,000
EL 23087	\$ 250.00	\$ 19,000.00	\$3,500	\$26,000
EL 23089	\$ 530.00	\$ 19,000.00	\$3,500	\$25,000

This provides for expenditure of \$922,000 on the Northern Territory tenements where the total covenant for 2007-2008 is \$384,400. If this plan is followed there will need to be a variation of covenant on EL10150 and EL9410 mid-year.

HARTS RANGE PROJECT

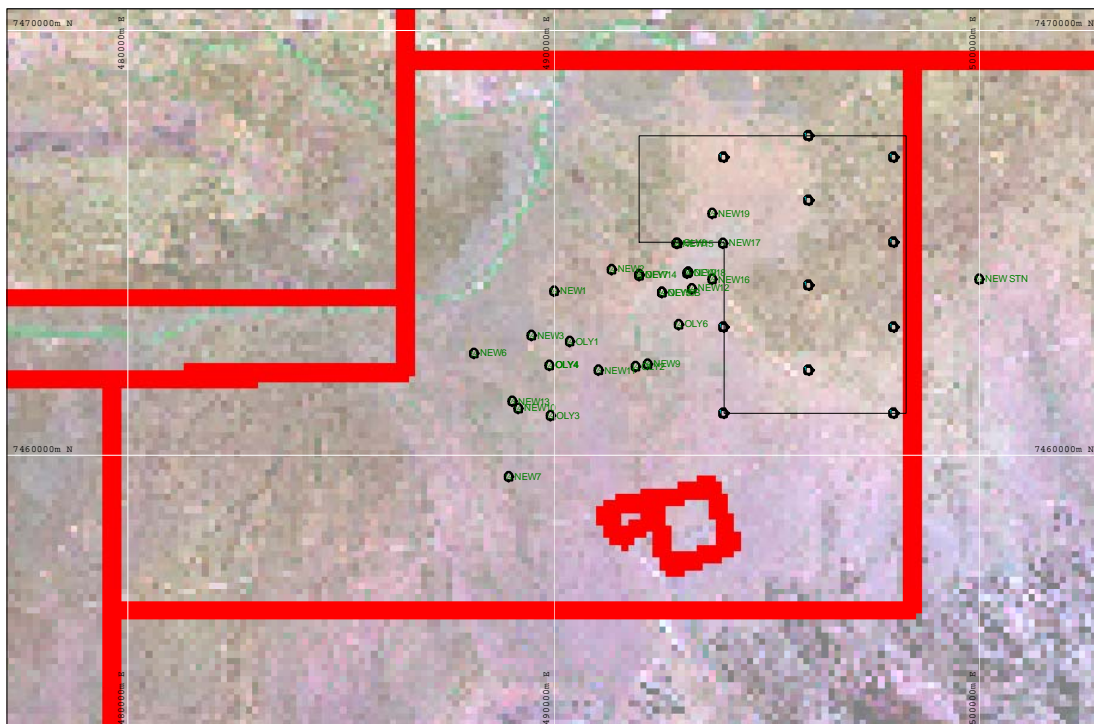
The tenements of the Harts Range Project include ML23868, EI 10150, EL 25098 and EL 24360. This project is completed attached to the development of the Aturga Abrasives Mine. Exploration on tenements at Harts Range in 2008 will concentrate on:

- Exploring the water resources in EI 24360:
 - Mapping the extent of the Ambalindum Sandstone with RC drilling
 - Constructing up to 5 production bores east of the current borefield
 - Establish a monitoring bore regime throughout the area
 - Complete the establishment of base line flora and fauna studies
 - Licence the borefield

- Support for the development of the operation at Aturga by:
 - Establishing a financial package to begin production
 - Extending the inferred resource between Aturga and Spinifex Bore
 - Mineralogy studies
 - Ecological studies

- General Programme of exploration
 - Plenty River palaeochannels assessment
 - Continuing CLC negotiations with respect to the Aturga Operation associated with the DRC.

Figure 1 Location of exploratory water bores east of Spinifex Bore (new bores in black)



Aquifer Mapping

It is expected that drill holes will be constructed on a grid approximate 2km spaced holes between Spinifex Bore and the eastern boundary of EL 24360. The position of the new bores is shown on Figure 1. There are 11 bores that will need to be drilled to about 90m for approximately 1,000m of RC drilling.

These holes will need to be planned (\$20,000) and logged by Rockwater and the drilling should take about 1 week. All eleven bores will be equipped as monitor bores.

The estimated cost is \$65,000.

Production Bore Construction

It is estimated that up to 5 production bores will be required following the aquifer mapping. The exact location of the bores will be determined after the aquifer mapping. In general production bores will be established within 20m of the exploratory bores and will be drilled by an experienced water driller. The preferred contractor is Underdale Drillers.

The estimated cost of this work is \$305,000

Pipeline Flora and Fauna Studies

The proposed survey will identify any flora and fauna aspects that need to be monitored along the pipeline route from Spinifex Bore to the Aturga Minesite. This assessment will be needed prior to the establishment of the pipeline and needs to be done at an opportune time. Consequently it is budgeted in the prior to June, 2008 period. This work will be directed toward EL 10150, MI 23868 and EL 24360.

The estimated cost will be \$8,000

Baseline Ecological Surveys

There is a requirement in the MMP that regular survey work be undertaken in the mined area. Bill Low has proposed that his group complete a baseline study that will assist in establishing targets for the rehabilitation and completing Olympia's obligations. This study will form the basis for ongoing environmental reporting as required by the MMP. The work will initially be directed entirely toward ML 23868.

The initial survey will require a budget of \$13,000 and then the bi-annual surveys as mining proceeds will cost about \$7-10,000 per year. It is proposed that the initial survey be completed toward the end of 2008, prior to initial stripping.

Budget for 2008 is \$13,000.

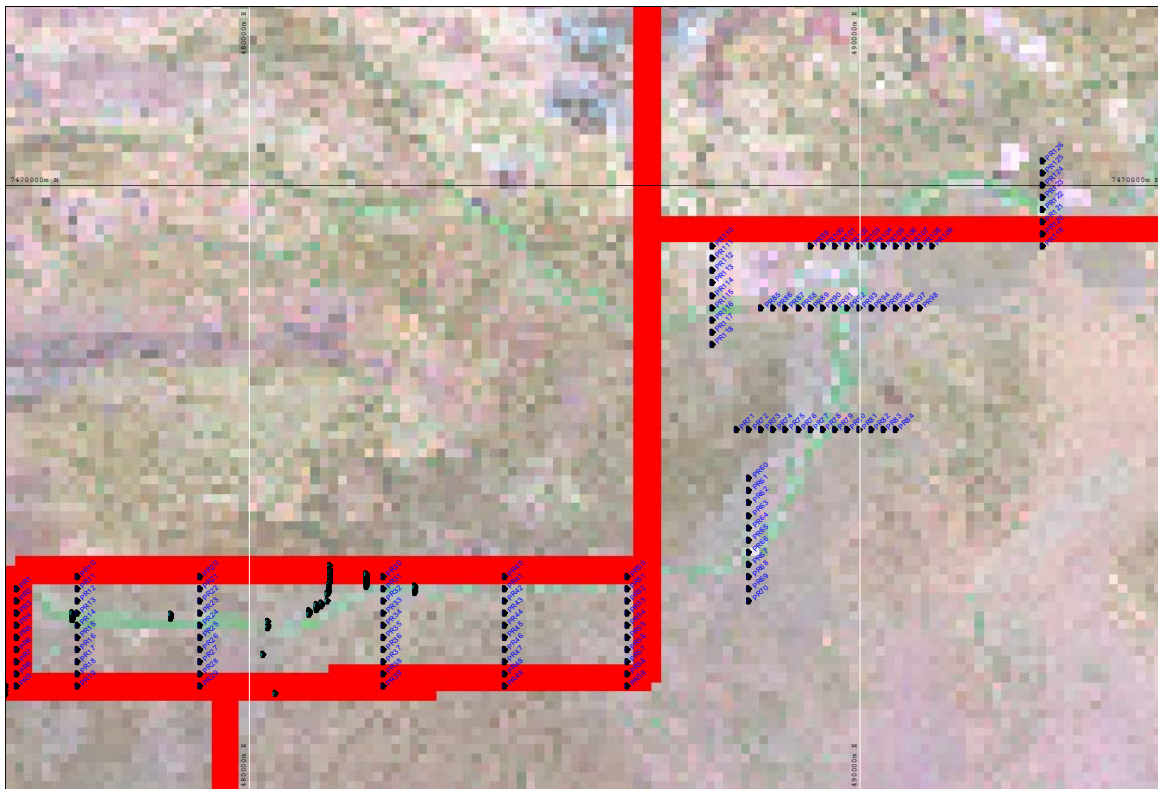
Harts Range Project Abrasive-Extension to Resources

There is a need to understand the distribution of coarser grained abrasives in the floodplain of the Plenty River. In order to assess the Plenty River Channel it is proposed to drill 126 aircore holes along 20 km of the floodplain of the Plenty River on EL25098, 24378 and 24360. The proposed sites are shown in Figure 2.

The programme will include:

- geological mapping,
- drilling holes to basement,
- collecting samples
- HM analysis by heavy media
- Mineralogy of composites
- Screening of the HM products

Figure 2 Proposed holes Harts Range Project (new holes in dark blue)



The drilling programme will require about 50km of brush rake cleared lines (\$5,000) and about 1,000m (\$30,000) of drilling followed by analysis of about 750 samples(\$19,000), which with supervision (\$20,000) for a total budget of \$74,000.

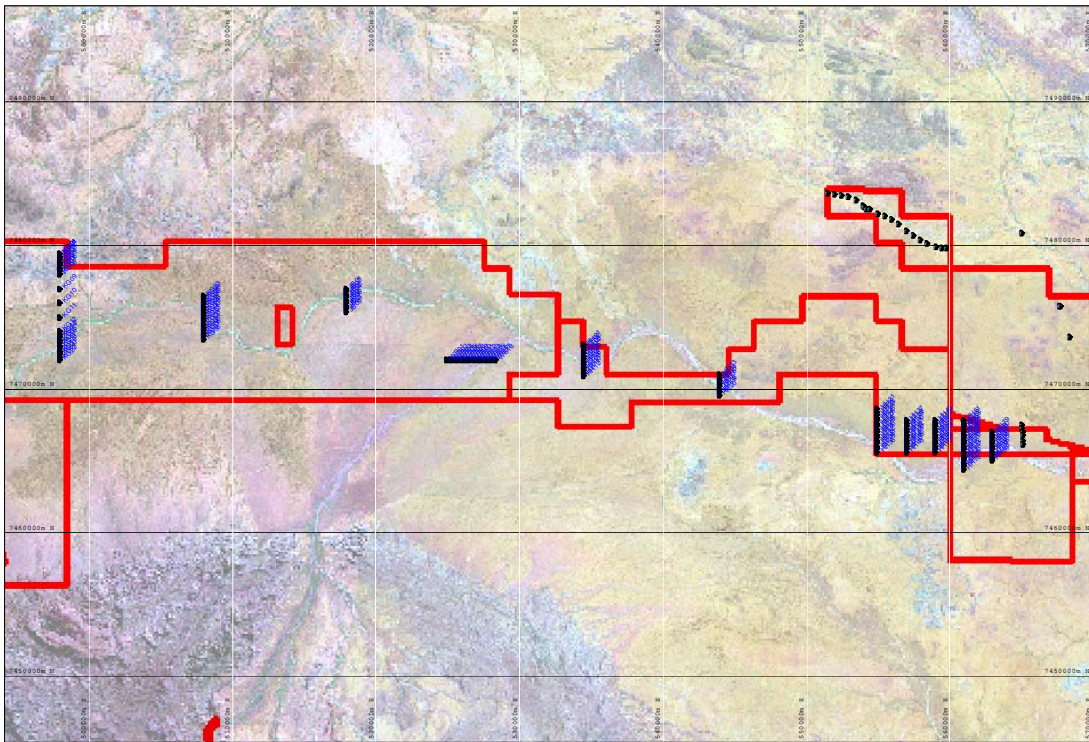
HUCKITTA PROJECT

Reconnaissance Mapping

Most of the Huckitta Project has not had any significant exploration since granting and it is proposed in 2008 to carry out some reconnaissance work on the ground followed by air core drilling. In 2006 Olympia conducted a drilling programme on EL 10372 (Stewart and McGuire, 2007) and identified moderate grades of garnet in the floodplain of the Plenty River. Part of the programme will be to extend that drilling to the west.

Roberts (2007) has recommended some reconnaissance drilling to test the uranium potential in the vicinity of Kanadra Gap Yard, Jamieson Bore and Entire Creek. These valleys are equally prospective for garnet and will be drilled with both targets in mind.

Figure 3 Proposed drill holes (dark blue) on Huckitta Project 2008, Scale 1:200,000



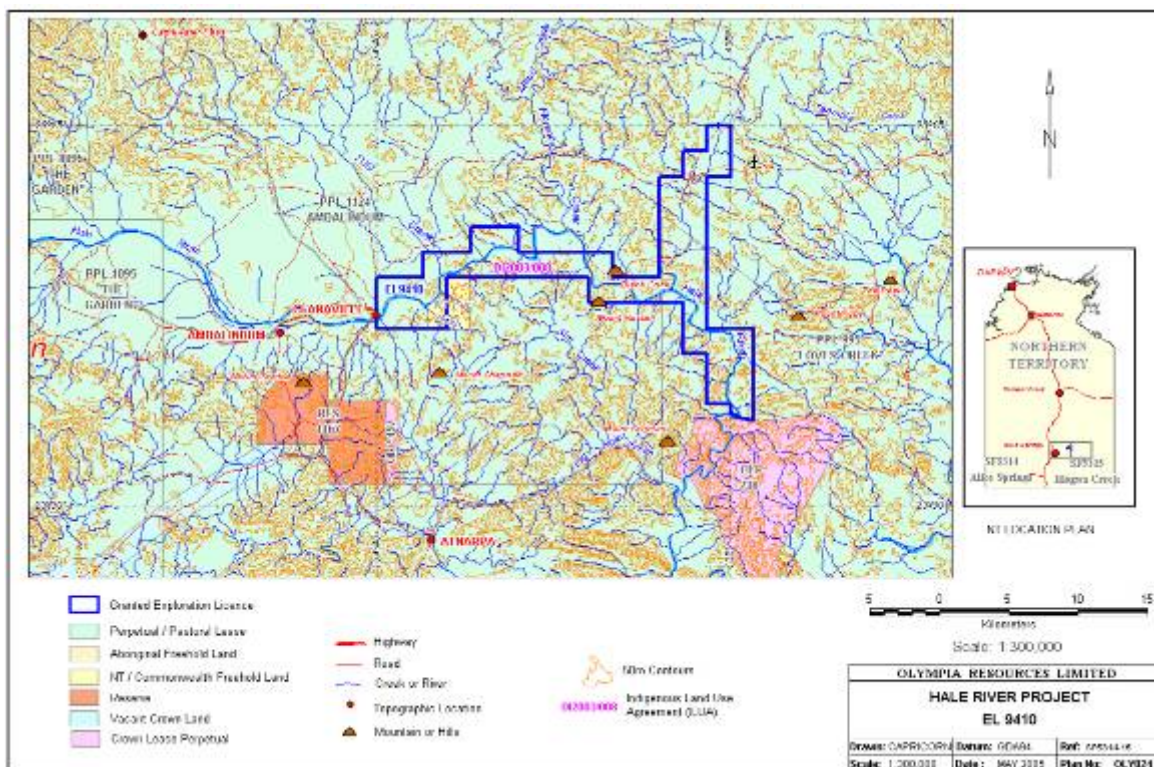
There will need to be about 40km of brush clearing for the lines (\$20,000), drilling of 1,100m of aircore holes (\$32,000) (ca150 holes) followed by HM analysis of 700 samples (\$17,500) and uranium analysis of about 30 U samples (\$500). Supervision of this project will require a budget of about \$16,000. The total budget for this project will be \$70,000.

HALE RIVER PROJECT

The Hale River Project consists of one tenement EL9410. The Hale River is cut into outcrop or sub outcropping rocks and has little chance of developing floodplain deposits within Olympia tenements. Previous explorers have made a very poor assessment of the resources in the river bed. Olympia has conducted two fly overs of the river bed to review the possibility of heavy mineral deposits (Baxter, 2005) and uranium potential (Roberts, 2007).

No CLC clearance has been approved for ground surveys on this tenement.

Figure 4 Hale River Tenement, January, 2008



It is recommended that site clearance be sought to undertake a wide spaced, where tracks and roads give access to the river followed by air core sampling program across the river bed and floodplains in the latter half of 2008. CLC clearance costs will be about \$12,000 followed by reconnaissance drilling attached to the Harts Range Project. Drilling of the tenement will be conducted on lines up to 5km apart wherever access can be sought that include the floodplain and the channel of the Hale River and Lizzie Creek.

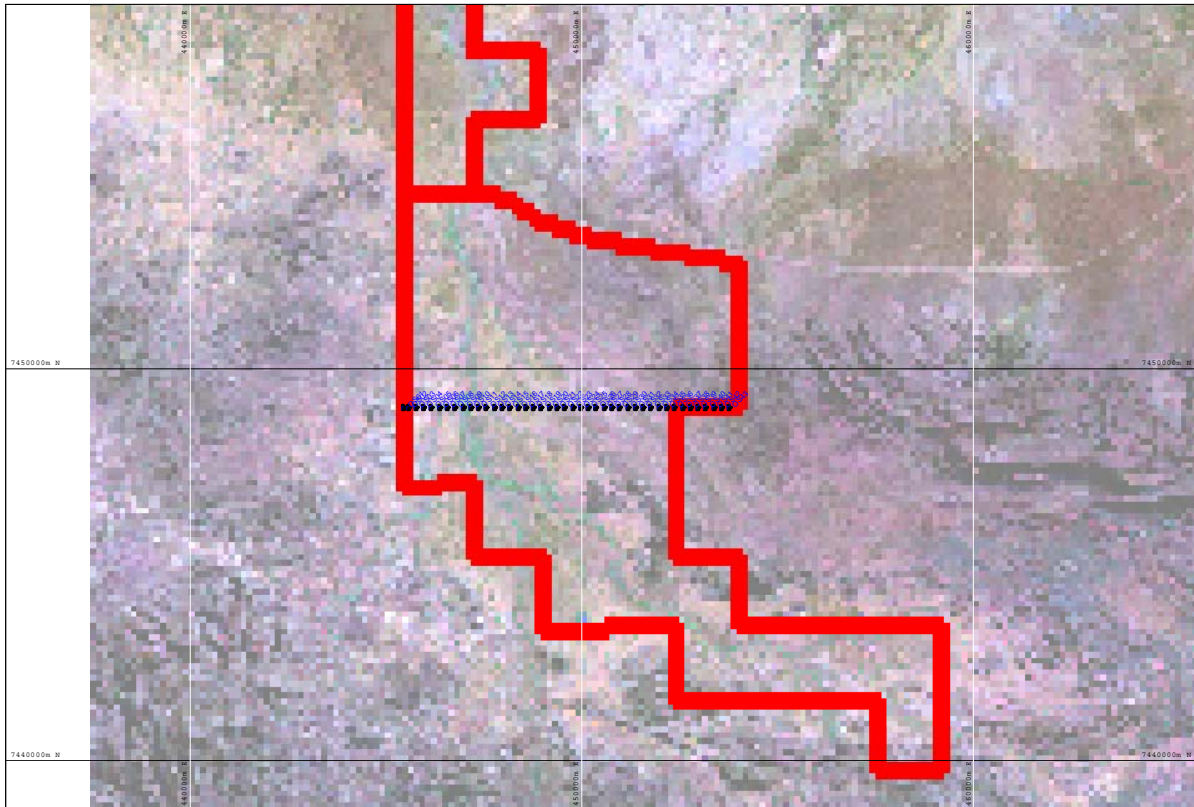
This drilling will be done in conjunction with drilling on the Harts Range Project.

Estimated Cost \$20,000

ONGEVA PROJECT

The Ongeva Project consists of EL10331 and EL 25099. Olympia has previously conducted a resource estimate on the channel of the Ongeva Creek south of the Plenty Highway. This deposit was the original focus of Olympia's work in 1997, but is not considered to warrant economic exploitation.

Figure 5 Ongeva South Proposed Drilling 2008



This proposal is for about 43 holes to be drilled across the Ongeva River valley to assess the potential of the floodplains for coarse grained garnet. Prior to this programme being completed there will need to be an extended clearance from the AAPA for the work to proceed.

It is expected the programme will take 2-3 days, it will require 9 kms of brush clearing along the line. It is important not to interfere with the riparian vegetation on the banks of Ongeva Creek.

The estimated costs of the programme are for clearing (\$2,000), drilling (\$10,000), analyses (\$5,000) and supervision (\$5,000). It is expected this will be completed in the second half of 2008.

JINKA URANIUM PROJECT

The Jinka Uranium Project covers tenements Huckitta and Marshall River Projects (Figure 3)). Roberts (2007) has recommended a programme of work that includes RC or RAB drilling in the following localities:

- Denara Bore (H258) between S22° 57.046' E136° 15.894' and S22° 57.293' E136° 16.013'
- H102 (EL25099) along the margins of a quartz vein for 100m radius about S23° 08.799' E134° 35.885'
- H133 on EL 24360 between S22° 58.719' E134° 58.487' and S22° 59.055' E134° 58.982'
- H229 on EL 23089 covering the hornfels around the pegmatite for 100m radius around S22° 55.078' E136° 04.861'
- Drill traverses approximately 500m either side of the river with holes every 50m across the lower Marshall River at approximately:
 - 5km easterly from Ghost Gum Bore
 - 7km north-westerly from Jervois Homestead
 - 5km easterly from Jervois Homestead
 - 10km easterly from Denara Bore
- Drill traverses across the Plenty River about 500m either side of the river with holes every 50m at approximately:
 - 2.5km easterly from Prosser Bore
 - 5km easterly from Jinka Homestead site
 - 2km easterly from Jamaica Bore
- Drill traverses on tributaries of the Plenty River being about 500m in line length and 50m hole spacing at:
 - Kanandra Gap Yard trending southwest-northeast
 - approximately 3km southwest of Williams Bore with an easterly traverse across Entire Creek

The recommended drilling at Jamaica Bore, Kanandra Gap Yard and Entire Creek has been included in the heavy mineral sand exploration budget.

It is noted that Olympia is currently attempting to obtain a Joint Venture partner to complete the uranium exploration.

It is proposed that approximately 19 days of drilling be conducted in the second half of the year for a budget of about \$150,000. Not detail of this programme has been designed.

BIBLIOGRAPHY

- Barnett, J., 2004, Harts Range Garnet Projects Groundwater Supply: OLY Rept OLY05/066.
- Baxter, J.L., Carthew, S.J., Mather, S. and Wilson, J., 1998, Resource Report on the Hale River Garnet-Magnetite Project: CRM Report WA98\020.
- Baxter, J.L., 2002, Exploration Strategy and Programme Harts Range garnet project, Northern Territory: OLY 05/042
- Baxter, J.L., 2004, Exploration Strategy and Programme Southwest heavy mineral sands project, Western Australia: OLY Report 07/049
- Baxter, J.L., 2005, Reconnaissance mapping and soil sampling at Bruces Copper Prospect, E9851, Northern Territory: OLY05/039
- Baxter, J.L., 2005, Exploration strategy and programme Olympia, Northern Territory tenements to June 2005; OLY05/037
- Baxter, J.L., 2005, Exploration Strategy and Programme Olympia Northern Territory Tenements to June, 2006: Olympia Report OLY07/038
- Baxter, J.L., 2005, Exploration Strategy and Programme Olympia Western Australian Tenements to June 2006. Olympia Report OLY05/073
- Baxter, J.L., 2005, Resource and Exploration Drilling Programme 2006 – Aturga Minesite, Marshall River , Jinka and Spinifex Bore North: Olympia Resources Rept OLY07/045
- Baxter, J.L. and Doepel, J.J.G., 2003, Harts Range Garnet-AMH Project Reserve Report, August 2003, Olympia Resources Ltd: OLY Rept OLY05/065
- Baxter, J.L. and Doepel, J.J.G., 2004, Harts Range Garnet-AMH Project Reserve Report (Updated May 2004) Olympia Resources Ltd: OLY Rept OLY05/033
- Baxter, J.L., Gazzard, P. and Stewart, S., 2007, Updated Resource and Reserve Statement, Aturga Abrasive Project, March 2007: OLY 07/026
- Baxter, J.L., 2007, Exploration Strategy, Northern Territory, Recommended Exploration programme May 2007-January 2008, May 2007, OLY Report No OLY07/028.
- Baxter, J.L., Ingram, M. and Doepel, J.J.G., 2003 Review of Mineralogy, Harts Range Deposit: OLY Rept OLY05/064

- Chisholm, J.M., 2001, Harts Range garnet project database as at March, 2001, Olympia Resources NL: CRM Report WA01/004
- Chisholm, J.M., 2001, Consulting Geologist Report - Olympia Resources Ltd Prospectus: CRM Report WA01/003.
- Chisholm, J.M. and Doepel, J.J.G, 2003 Report on Tenements held by Olympia Resources Ltd: OLY Report OLY07/048
- Doepel, J.J.G., 2003, Harts Range Project, 2002 Drilling Report: OLY07/046 (05/031)
- Garlick, J., 2002, Independent Geologist Report – Olympia Resources N.L. Draft
- Gazzard, P. and Baxter, J.L., 2005, Diggability and Screenability of the Abrasive Deposit, Aturga Creek, Northern Territory; OLY REpy 05/078
- Ingram, M., 1995, Final Report, Exploration Licence 8176 – Hale River – 22 September 1993 to 21 September 1995.
- Lennartz, R., 2005, Bruces Prospect Drilling Report, Central Mining and Exploration Services: OLY Rept OLY05/061
- Lennartz, R., 2007, Aturga Minesite, Spinifex Bore & Exploratory water bore drilling: Central Mining and Exploration Services: OLY Rept OLY07/033
- Roberts, V.T., 2007a, Overview of exploration potential for uranium on Harts Range tenements (of Olympia Resources), Alice Springs Region, Northern Territory, Australia, May, 2007, VR Report 070503, OLY Report OLY07/010
- Roberts, V.T., 2007b, Interpretation of uranium anomalies for reconnaissance inspection, Harts Range Project, Alice Springs Region, Northern Territory, September, 2007, VR Report 070930, OLY Report OLY07/029
- Roberts, V.T., 2007c, Reconnaissance inspection of uranium anomalies Harts Range Project (of Olympia Resources Ltd) Alice Springs region, Northern Territory, Australia, November, 2007, VR Report 071113, OLY Report OLY07/030
- Roney, D. and Passmore, R., 2007, Harts Range Project, Borefield Drilling Programme and Evaluation of Groundwater Supply of 1210 m³/day (14L/s), Rockwater: OLY Rept OLY07/031
- Stewart, S. and Baxter, J.L., 2007, Jinka Project, 2007, Review of Sediment Thickness at anomaly sites identified by Vince Roberts, 2007, December, 2007. OLY Report No: 07/025
- Stewart, S and McGuire, T., 2007, Drilling Report 2007: Olympia Resources Report OLY07/054.
- Taylor, M.J., 1994, Annual Report Exploration Licence 7906 – Ongeva Creek 5 March 1993 to 4 March 1994.

Wischusen, J., 1993, Atitjere (Harts Range) Borefield Review: OLY Rept OLY05/067

APPENDIX 1

Name	Easting	Northing	Name	Easting	Northing
PR1	476200.00	7463400.00	PR44	484200.00	7462800.00
PR2	476200.00	7463200.00	PR45	484200.00	7462600.00
PR3	476200.00	7463000.00	PR46	484200.00	7462400.00
PR4	476200.00	7462800.00	PR47	484200.00	7462200.00
PR5	476200.00	7462600.00	PR48	484200.00	7462000.00
PR6	476200.00	7462400.00	PR49	484200.00	7461800.00
PR7	476200.00	7462200.00	PR50	486200.00	7463600.00
PR8	476200.00	7462000.00	PR51	486200.00	7463400.00
PR9	476200.00	7461800.00	PR52	486200.00	7463200.00
PR10	477200.00	7463600.00	PR53	486200.00	7463000.00
PR11	477200.00	7463400.00	PR54	486200.00	7462800.00
PR12	477200.00	7463200.00	PR55	486200.00	7462600.00
PR13	477200.00	7463000.00	PR56	486200.00	7462400.00
PR14	477200.00	7462800.00	PR57	486200.00	7462200.00
PR15	477200.00	7462600.00	PR58	486200.00	7462000.00
PR16	477200.00	7462400.00	PR59	486200.00	7461800.00
PR17	477200.00	7462200.00	PR60	488200.00	7465200.00
PR18	477200.00	7462000.00	PR61	488200.00	7465000.00
PR19	477200.00	7461800.00	PR62	488200.00	7464800.00
PR20	479200.00	7463600.00	PR63	488200.00	7464600.00
PR21	479200.00	7463400.00	PR64	488200.00	7464400.00
PR22	479200.00	7463200.00	PR65	488200.00	7464200.00
PR23	479200.00	7463000.00	PR66	488200.00	7464000.00
PR24	479200.00	7462800.00	PR67	488200.00	7463800.00
PR25	479200.00	7462600.00	PR68	488200.00	7463600.00
PR26	479200.00	7462400.00	PR69	488200.00	7463400.00
PR27	479200.00	7462200.00	PR70	488200.00	7463200.00
PR28	479200.00	7462000.00	PR71	488000.00	7466000.00
PR29	479200.00	7461800.00	PR72	488200.00	7466000.00
PR30	482200.00	7463600.00	PR73	488400.00	7466000.00
PR31	482200.00	7463400.00	PR74	488600.00	7466000.00
PR32	482200.00	7463200.00	PR75	488800.00	7466000.00
PR33	482200.00	7463000.00	PR76	489000.00	7466000.00
PR34	482200.00	7462800.00	PR77	489200.00	7466000.00
PR35	482200.00	7462600.00	PR78	489400.00	7466000.00
PR36	482200.00	7462400.00	PR79	489600.00	7466000.00
PR37	482200.00	7462200.00	PR80	489800.00	7466000.00
PR38	482200.00	7462000.00	PR81	490000.00	7466000.00
PR39	482200.00	7461800.00	PR82	490200.00	7466000.00
PR40	484200.00	7463600.00	PR83	490400.00	7466000.00
PR41	484200.00	7463400.00	PR84	490600.00	7466000.00
PR42	484200.00	7463200.00	PR85	488400.00	7468000.00
PR43	484200.00	7463000.00	PR86	488600.00	7468000.00

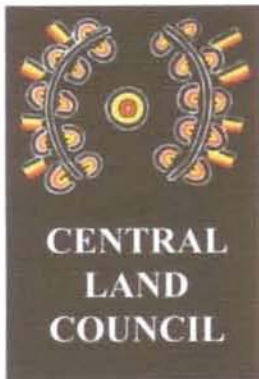
Name	Easting	Northing	Name	Easting	Northing
PR87	488800.00	7468000.00	KG06	498000.00	7478400.00
PR88	489000.00	7468000.00	KG07	498000.00	7478200.00
PR89	489200.00	7468000.00	KG08	498000.00	7478000.00
PR90	489400.00	7468000.00	KG09	498000.00	7477000.00
PR91	489600.00	7468000.00	KG10	498000.00	7476000.00
PR92	489800.00	7468000.00	KG11	498000.00	7475000.00
PR93	490000.00	7468000.00	KG12	498000.00	7474000.00
PR94	490200.00	7468000.00	KG13	498000.00	7473800.00
PR95	490400.00	7468000.00	KG14	498000.00	7473600.00
PR96	490600.00	7468000.00	KG15	498000.00	7473400.00
PR97	490800.00	7468000.00	KG16	498000.00	7473200.00
PR98	491000.00	7468000.00	KG17	498000.00	7473000.00
PR99	489200.00	7469000.00	KG18	498000.00	7472800.00
PR100	489400.00	7469000.00	KG19	498000.00	7472600.00
PR101	489600.00	7469000.00	KG20	498000.00	7472400.00
PR102	489800.00	7469000.00	KG21	498000.00	7472200.00
PR103	490000.00	7469000.00	KG22	498000.00	7472000.00
PR104	490200.00	7469000.00	KG23	508000.00	7476500.00
PR105	490400.00	7469000.00	KG24	508000.00	7476300.00
PR106	490600.00	7469000.00	KG25	508000.00	7476100.00
PR107	490800.00	7469000.00	KG26	508000.00	7475900.00
PR108	491000.00	7469000.00	KG27	508000.00	7475700.00
PR109	491200.00	7469000.00	KG28	508000.00	7475500.00
PR110	487600.00	7469000.00	KG29	508000.00	7475300.00
PR111	487600.00	7468800.00	KG30	508000.00	7475100.00
PR112	487600.00	7468600.00	KG31	508000.00	7474900.00
PR113	487600.00	7468400.00	KG32	508000.00	7474700.00
PR114	487600.00	7468200.00	KG33	508000.00	7474500.00
PR115	487600.00	7468000.00	KG34	508000.00	7474300.00
PR116	487600.00	7467800.00	KG35	508000.00	7474100.00
PR117	487600.00	7467600.00	KG36	508000.00	7473900.00
PR118	487600.00	7467400.00	KG37	508000.00	7473700.00
PR119	493000.00	7469000.00	KG38	508000.00	7473500.00
PR120	493000.00	7469200.00	JB01	518000.00	7477000.00
PR121	493000.00	7469400.00	JB02	518000.00	7476800.00
PR122	493000.00	7469600.00	JB03	518000.00	7476600.00
PR123	493000.00	7469800.00	JB04	518000.00	7476400.00
PR124	493000.00	7470000.00	JB05	518000.00	7476200.00
PR125	493000.00	7470200.00	JB06	518000.00	7476000.00
PR126	493000.00	7470400.00	JB07	518000.00	7475800.00
KG01	498000.00	7479400.00	JB08	518000.00	7475600.00
KG02	498000.00	7479200.00	JB09	518000.00	7475400.00
KG03	498000.00	7479000.00	WB01	525000.00	7472000.00
KG04	498000.00	7478800.00	WB02	525200.00	7472000.00
KG05	498000.00	7478600.00	WB03	525400.00	7472000.00

Name	Easting	Northing	Name	Easting	Northing
WB04	525600.00	7472000.00	HH31	555000.00	7466600.00
WB05	525800.00	7472000.00	HH32	555000.00	7466400.00
WB06	526000.00	7472000.00	HH33	555000.00	7466200.00
WB07	526200.00	7472000.00	HH34	555000.00	7466000.00
WB08	526400.00	7472000.00	HH35	555000.00	7465800.00
WB09	526600.00	7472000.00	HH36	555000.00	7465600.00
WB10	526800.00	7472000.00	HH37	557000.00	7467800.00
WB11	527000.00	7472000.00	HH38	557000.00	7467600.00
WB12	527200.00	7472000.00	HH39	557000.00	7467400.00
WB13	527400.00	7472000.00	HH40	557000.00	7467200.00
WB14	527600.00	7472000.00	HH41	557000.00	7467000.00
WB15	527800.00	7472000.00	HH42	557000.00	7466800.00
WB16	528000.00	7472000.00	HH43	557000.00	7466600.00
WB17	528200.00	7472000.00	HH44	557000.00	7466400.00
WB18	528400.00	7472000.00	HH45	557000.00	7466200.00
HH01	534500.00	7473100.00	HH46	557000.00	7466000.00
HH02	534500.00	7472900.00	HH47	557000.00	7465800.00
HH03	534500.00	7472700.00	HH48	557000.00	7465600.00
HH04	534500.00	7472500.00	HH49	559000.00	7467800.00
HH05	534500.00	7472300.00	HH50	559000.00	7467600.00
HH06	534500.00	7472100.00	HH51	559000.00	7467400.00
HH07	534500.00	7471900.00	HH52	559000.00	7467200.00
HH08	534500.00	7471700.00	HH53	559000.00	7467000.00
HH09	534500.00	7471500.00	HH54	559000.00	7466800.00
HH10	534500.00	7471300.00	HH55	559000.00	7466600.00
HH11	534500.00	7471100.00	HH56	559000.00	7466400.00
HH12	534500.00	7470900.00	HH57	559000.00	7466200.00
HH13	544000.00	7471000.00	HH58	559000.00	7466000.00
HH14	544000.00	7470800.00	HH59	559000.00	7465800.00
HH15	544000.00	7470600.00	HH60	559000.00	7465600.00
HH16	544000.00	7470400.00	HH61	561000.00	7467800.00
HH17	544000.00	7470200.00	HH62	561000.00	7467600.00
HH18	544000.00	7470000.00	HH63	561000.00	7467400.00
HH19	544000.00	7469800.00	HH64	561000.00	7467200.00
HH20	544000.00	7469600.00	HH65	561000.00	7467000.00
HH21	555000.00	7468600.00	HH66	561000.00	7466800.00
HH22	555000.00	7468400.00	HH67	561000.00	7466600.00
HH23	555000.00	7468200.00	HH68	561000.00	7466400.00
HH24	555000.00	7468000.00	HH69	561000.00	7466200.00
HH25	555000.00	7467800.00	HH70	561000.00	7466000.00
HH26	555000.00	7467600.00	HH71	561000.00	7465800.00
HH27	555000.00	7467400.00	HH72	561000.00	7465600.00
HH28	555000.00	7467200.00	HH73	561000.00	7465400.00
HH29	555000.00	7467000.00	HH74	561000.00	7465200.00
HH30	555000.00	7466800.00	HH75	561000.00	7465000.00

Name	Easting	Northing	Name	Easting	Northing
HH76	561000.00	7464800.00	OS32	451600.00	7449000.00
HH77	561000.00	7464600.00	OS33	451800.00	7449000.00
HH78	561000.00	7464400.00	OS34	452000.00	7449000.00
HH79	563000.00	7467000.00	OS35	452200.00	7449000.00
HH80	563000.00	7466800.00	OS36	452400.00	7449000.00
HH81	563000.00	7466600.00	OS37	452600.00	7449000.00
HH82	563000.00	7466400.00	OS38	452800.00	7449000.00
HH83	563000.00	7466200.00	OS39	453000.00	7449000.00
HH84	563000.00	7466000.00	OS40	453200.00	7449000.00
HH85	563000.00	7465800.00	OS41	453400.00	7449000.00
HH86	563000.00	7465600.00	OS42	453600.00	7449000.00
HH87	563000.00	7465400.00	OS43	453800.00	7449000.00
HH88	563000.00	7465200.00			
HH89	563000.00	7465000.00			
OS01	445500.00	7449000.00			
OS02	445600.00	7449000.00			
OS03	445800.00	7449000.00			
OS04	446000.00	7449000.00			
OS05	446200.00	7449000.00			
OS06	446400.00	7449000.00			
OS07	446600.00	7449000.00			
OS08	446800.00	7449000.00			
OS09	447000.00	7449000.00			
OS10	447200.00	7449000.00			
OS11	447400.00	7449000.00			
OS12	447600.00	7449000.00			
OS13	447800.00	7449000.00			
OS14	448000.00	7449000.00			
OS15	448200.00	7449000.00			
OS16	448400.00	7449000.00			
OS17	448600.00	7449000.00			
OS18	448800.00	7449000.00			
OS19	449000.00	7449000.00			
OS20	449200.00	7449000.00			
OS21	449400.00	7449000.00			
OS22	449600.00	7449000.00			
OS23	449800.00	7449000.00			
OS24	450000.00	7449000.00			
OS25	450200.00	7449000.00			
OS26	450400.00	7449000.00			
OS27	450600.00	7449000.00			
OS28	450800.00	7449000.00			
OS29	451000.00	7449000.00			
OS30	451200.00	7449000.00			
OS31	451400.00	7449000.00			

APPENDIX 2

Bore	Easting	Northing
JB1	494000.00	7467000.00
JB2	494000.00	7463000.00
JB3	494000.00	7461000.00
JB4	496000.00	7467500.00
JB5	496000.00	7466000.00
JB6	496000.00	7464000.00
JB7	496000.00	7462000.00
JB8	498000.00	7467000.00
JB9	498000.00	7465000.00
JB10	498000.00	7463000.00
JB11	498000.00	7461000.00



SACRED SITE CLEARANCE CERTIFICATE

Aboriginal Land Rights (Northern Territory) Act 1976

CERTIFICATE
NUMBER: C2008-032

CLC file number: 2007/505

APPLICANT: Olympia Resources Limited
*PO Box 1341
Osborne Park WA 6916*

IMPORTANT:

- A. This certificate is issued for the purpose of:
- (i) protecting sacred sites on the subject land in accordance with the *Indigenous Land Use Agreement* executed by the Central Land Council and the Applicant on the sixth day of March, 2003; and
 - (ii) providing the Applicant with protection against prosecution for entering, remaining on, working on, using or desecrating a sacred site on the subject land under the *Northern Territory Aboriginal Sacred Sites Act* and the *Aboriginal Land Rights (Northern Territory) Act 1976*.
- B. The Central Land Council has consulted the traditional Aboriginal owners and custodians of the subject land, and they consent to the proposed works being carried out subject to the conditions in this certificate.
- C. Expressions used in this certificate have the same meaning given to them in the *Northern Territory Aboriginal Sacred Sites Act* and *Aboriginal Land Rights (Northern Territory) Act 1976*.

SUBJECT LAND: This certificate covers that part of Mt Riddock PPL identified on the map in Annexure A by a blue border and GPS coordinates (the 'subject land').

PROPOSED WORKS: Extension of the Spinifex Bore Field (EL 24360) to supply water resources for Aturga Mine (ML 23868). The work comprises the drilling of an additional eleven (11) bores. Following drilling and assessment five (5) of the bores will be outfitted for production and the remainder outfitted for monitoring purposes. Applicant's documentation is provided in Annexure B (*Olympia Resources Limited Northern Territory Exploration Programme January 2008-December 2008*, dated January 2008).

GENERAL CONDITIONS:

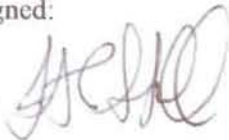
1. The information contained in this certificate is confidential and must not be disclosed to any person other than for the purpose of the proposed works.
2. This certificate is issued for the sole purpose of the proposed works and does not offer protection to the Applicant in relation to any work that is not in accordance with the proposed works.
3. The protection provided by this certificate extends to a person who enters the subject land on behalf of the Applicant to carry out the proposed works provided that person is aware of, and complies with, these conditions.
4. The Applicant must ensure that any person who enters the subject land on behalf of the Applicant to carry out the proposed works is aware of, and complies with, the conditions of this certificate.
5. Entry into exclusion zones identified on the map in Annexure A is prohibited.
6. Entry into restricted work areas identified on the map in Annexure A is subject to the special conditions below.
7. Aboriginal artefacts, stone arrangements, rock engravings or paintings, or human remains must not be removed or disturbed. If any of these items are found, then the Applicant must report the finding to the CLC together with sufficient information, including GPS coordinates, to enable the CLC to locate and identify the item.
8. Soakages, rock-holes, clay-pans, caves and mature trees that are not otherwise protected by the special conditions should be avoided if possible.

SPECIAL CONDITIONS:

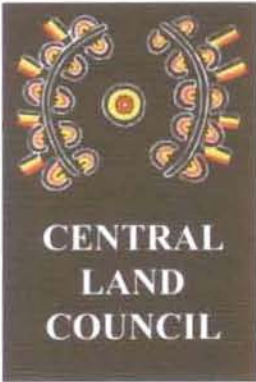
1. No special conditions

Issued by the Central Land Council on the 10th day of June, 2008.

Signed:



Julie-Ann Stoll, Manager, Mining Section
By virtue of the delegated authority of
the Central Land Council
in accordance with resolution EX2007/1



SACRED SITE CLEARANCE CERTIFICATE

Aboriginal Land Rights (Northern Territory) Act 1976

CERTIFICATE
NUMBER: C2008-060

CLC file number: 2007/505

APPLICANT: Olympia Resources Limited
PO Box 1341
Osborne Park WA 6916

IMPORTANT:

- A. This certificate is issued for the purpose of:
- (i) protecting sacred sites on the subject land in accordance with the *Indigenous Land Use Agreement* executed by the Central Land Council and the Applicant on the sixth day of March, 2003; and
 - (ii) providing the Applicant with protection against prosecution for entering, remaining on, working on, using or desecrating a sacred site on the subject land under the *Northern Territory Aboriginal Sacred Sites Act* and the *Aboriginal Land Rights (Northern Territory) Act 1976*.
- B. The Central Land Council has consulted the traditional Aboriginal owners and custodians of the subject land, and they consent to the proposed works being carried out subject to the conditions in this certificate.
- C. Expressions used in this certificate have the same meaning given to them in the *Northern Territory Aboriginal Sacred Sites Act* and *Aboriginal Land Rights (Northern Territory) Act 1976*.

SUBJECT LAND: This certificate covers that part of exploration licences EL 9410 on Ambalindum Perpetual Pastoral Lease and identified on the map in Annexure A by a blue border and GPS coordinates (the 'subject land').

PROPOSED WORKS: Assessment of abrasive resources along the Hale River and Lizzie Creek. The work comprises wide spaced aircore holes in watercourse and floodplain accessible from existing station tracks. Applicant's documentation is provided at Annexure B (*Olympia Resources Limited Northern Territory Exploration Programme January 2008-December 2008*, dated January 2008).

GENERAL CONDITIONS:

1. The information contained in this certificate is confidential and must not be disclosed to any person other than for the purpose of the proposed works.
2. This certificate is issued for the sole purpose of the proposed works and does not offer protection to the Applicant in relation to any work that is not in accordance with the proposed works.
3. The protection provided by this certificate extends to a person who enters the subject land on behalf of the Applicant to carry out the proposed works provided that person is aware of, and complies with, these conditions.
4. The Applicant must ensure that any person who enters the subject land on behalf of the Applicant to carry out the proposed works is aware of, and complies with, the conditions of this certificate.
5. Entry into exclusion zones identified on the map in Annexure A is prohibited.
6. Entry into restricted work areas identified on the map in Annexure A is subject to the special conditions below.
7. Aboriginal artefacts, stone arrangements, rock engravings or paintings, or human remains must not be removed or disturbed. If any of these items are found, then the Applicant must report the finding to the CLC together with sufficient information, including GPS coordinates, to enable the CLC to locate and identify the item.
8. Soakages, rock-holes, clay-pans, caves and mature trees that are not otherwise protected by the special conditions should be avoided if possible.

SPECIAL CONDITIONS:

1. **No access** whatsoever is permitted within the Exclusion Zone indicated on Map at Annexure A by red border, red hatching and corner coordinates (datum GDA94, projection UTM 53) 1 to 4 tabled below.

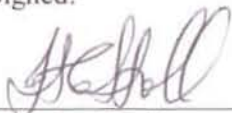
ID	X	Y
1	496866	7423356
2	496866	7423456
3	496966	7423456
4	496966	7423356

2. **Access restricted to transit only** within the Restricted Work Area indicated on map at Annexure A by green border, green hatching and corner coordinates (datum GDA94, projection UTM 53) 100 to 103 tabled below.

ID	X	Y
100	499228	7428580
101	499228	7429080
102	499728	7429080
103	499728	7428580

Issued by the Central Land Council on the 25th day of September, 2008.

Signed:

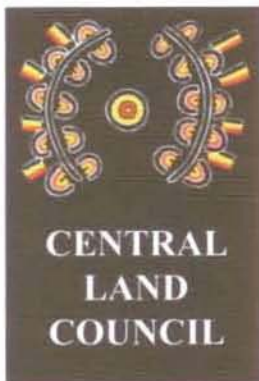


Julie-Ann Stoll

Manager Mining

By virtue of the delegated authority of
the Central Land Council

in accordance with resolution EX2007/036



SACRED SITE CLEARANCE CERTIFICATE

Aboriginal Land Rights (Northern Territory) Act 1976

CERTIFICATE
NUMBER: C2008-034

CLC file number: 2007/505

APPLICANT: Olympia Resources Limited
PO Box 1341
Osborne Park WA 6916

IMPORTANT:

- A. This certificate is issued for the purpose of:
- (i) protecting sacred sites on the subject land in accordance with the *Indigenous Land Use Agreement* executed by the Central Land Council and the Applicant on the sixth day of March, 2003; and
 - (ii) providing the Applicant with protection against prosecution for entering, remaining on, working on, using or desecrating a sacred site on the subject land under the *Northern Territory Aboriginal Sacred Sites Act* and the *Aboriginal Land Rights (Northern Territory) Act 1976*.
- B. The Central Land Council has consulted the traditional Aboriginal owners and custodians of the subject land, and they consent to the proposed works being carried out subject to the conditions in this certificate.
- C. Expressions used in this certificate have the same meaning given to them in the *Northern Territory Aboriginal Sacred Sites Act* and *Aboriginal Land Rights (Northern Territory) Act 1976*.

SUBJECT LAND: This certificate covers that part of exploration licence 25099 on Mt Riddock PPL and identified on the map at Annexure A by a blue coloured border and GPS coordinates (the 'subject land').

PROPOSED WORKS: The aim is to assess the abrasive resources of Ongeva River Valley. The work comprises 43 holes to be drilled along one (1) traverse 9 kilometres in length. The Applicant's documentation, including maps of the proposed work area, is provided at Annexure B.

GENERAL CONDITIONS:

1. The information contained in this certificate is confidential and must not be disclosed to any person other than for the purpose of the proposed works.

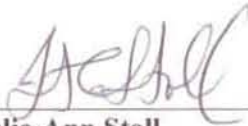
2. This certificate is issued for the sole purpose of the proposed works and does not offer protection to the Applicant in relation to any work that is not in accordance with the proposed works.
3. The protection provided by this certificate extends to a person who enters the subject land on behalf of the Applicant to carry out the proposed works provided that person is aware of, and complies with, these conditions.
4. The Applicant must ensure that any person who enters the subject land on behalf of the Applicant to carry out the proposed works is aware of, and complies with, the conditions of this certificate.
5. Entry into exclusion zones identified on the map in Annexure A is prohibited.
6. Entry into restricted work areas identified on the map in Annexure A is subject to the special conditions below.
7. Aboriginal artefacts, stone arrangements, rock engravings or paintings, or human remains must not be removed or disturbed. If any of these items are found, then the Applicant must report the finding to the CLC together with sufficient information, including GPS coordinates, to enable the CLC to locate and identify the item.
8. Soakages, rock-holes, clay-pans, caves and mature trees that are not otherwise protected by the special conditions should be avoided if possible.

SPECIAL CONDITIONS:

1. no special conditions apply.

Issued by the Central Land Council on the 25th day of September, 2008.

Signed:



Julie-Ann Stoll

Manager Mining

By virtue of the delegated authority of
the Central Land Council

in accordance with resolution EX2007/036