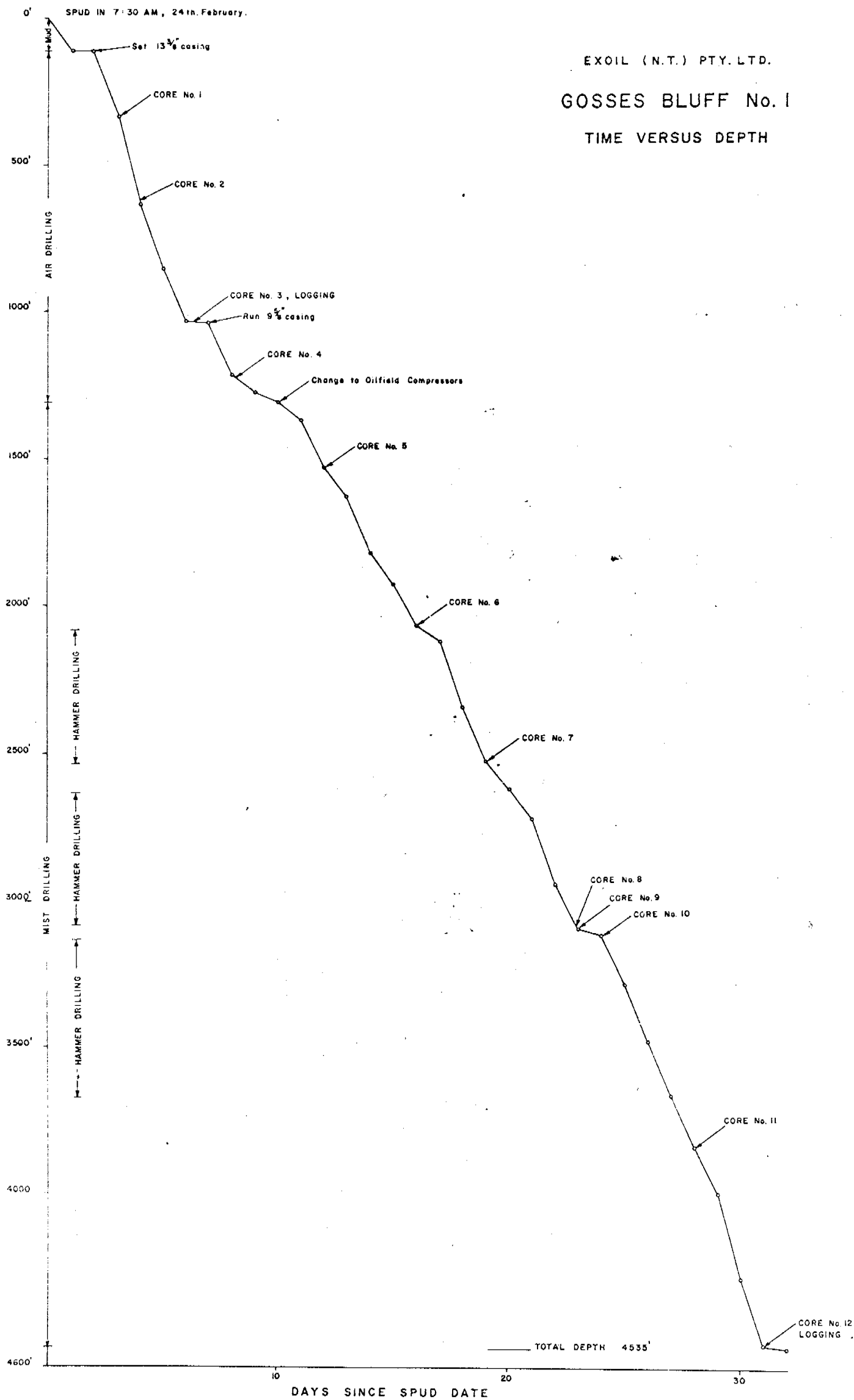
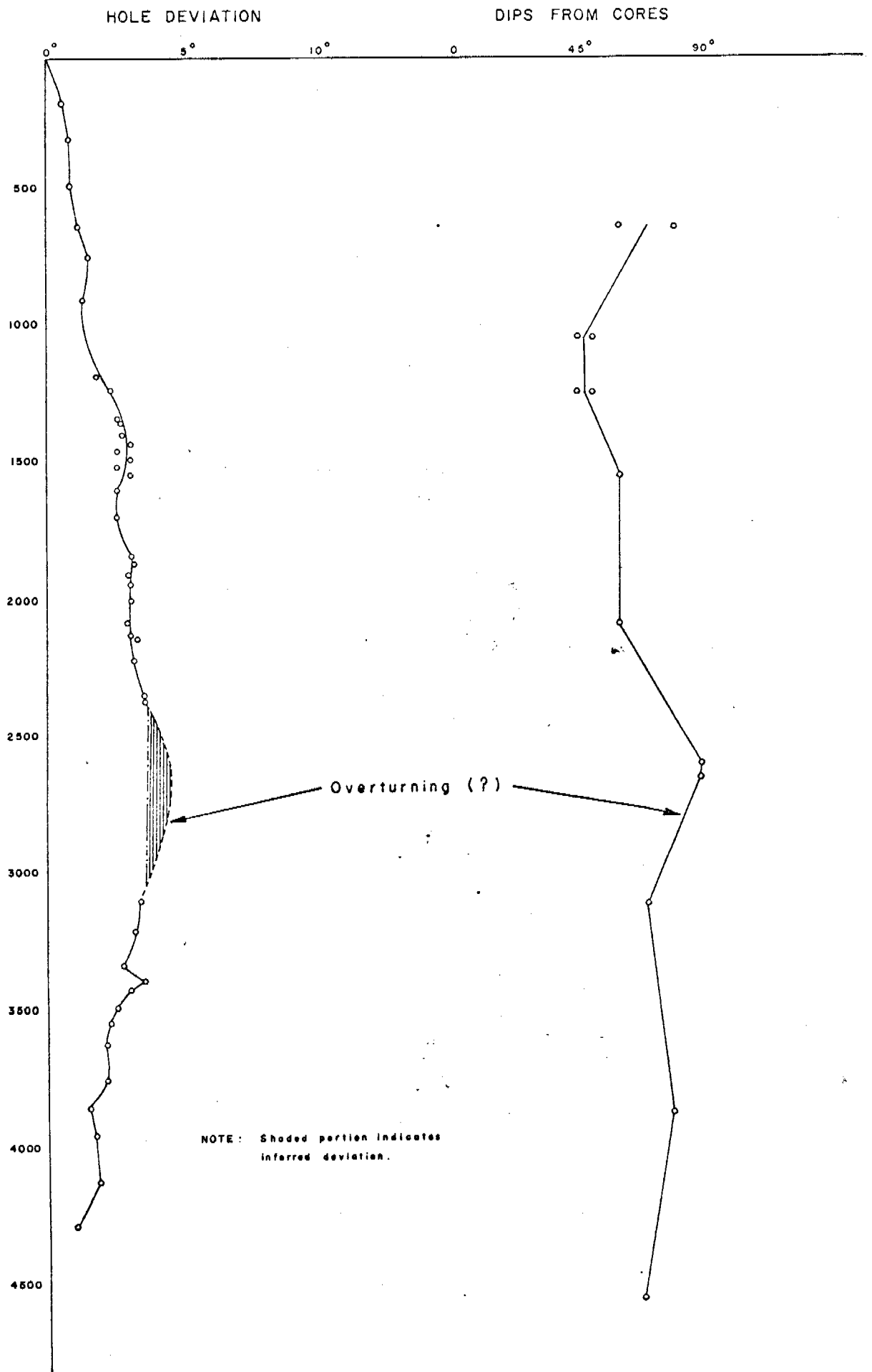


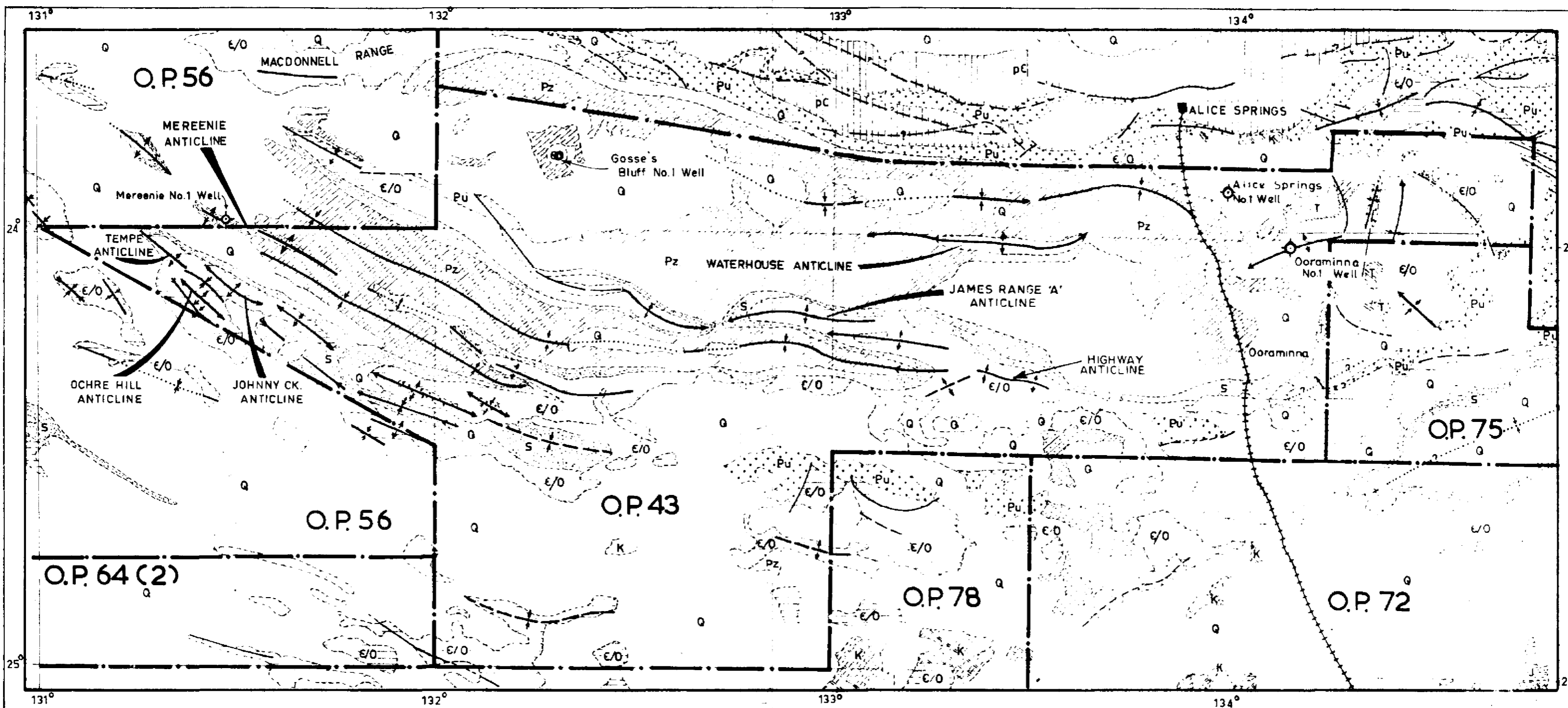
EXOIL (N.T.) PTY. LTD.  
GOSSES BLUFF No. 1  
TIME VERSUS DEPTH





GRAPH SHOWING RELATION BETWEEN  
HOLE DEVIATION AND MEASURED DIPS

GOSSES BLUFF No. 1

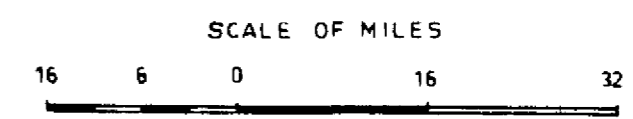


**LEGEND**

- |     |                       |     |                     |
|-----|-----------------------|-----|---------------------|
| G   | QUATERNARY            | Pz  | UPPER PALAEOZOIC    |
| T   | TERTIARY - Sediments  | S   | ? SILURIAN          |
| T   | TERTIARY - Grey billy | E/O | ORDOVICIAN-CAMBRIAN |
| K   | CRETACEOUS            | Pu  | UPPER PROTEROZOIC   |
| ? J | ? JURASSIC            | pC  | Undifferentiated    |

- Fault
- Anticline, showing plunge
- Syncline

**REGIONAL GEOLOGICAL MAP  
ALICE SPRINGS AREA**



Geology after T. Quinlan, BMR

FIG. 4

PR65/1

# COMPOSITE WELL LOG

Sheet 1 of 2  
PR 65/1

EXOIL (N.T.) PTY. LTD. - MAGELLAN PETROLEUM (N.T.) PTY. LTD. - FARMOUT DRILLERS N.L.

## GOSSE'S BLUFF No. 1

PETROLEUM TENEMENT: O.P. 43      STATE: NORTHERN TERRITORY      F 53-13  
4-MILE SHEET: HERMANNSBURG BASIN: AMADEUS  
WELL STATUS: DRY & ABANDONED

LOCATION      Lat. 23° 49' 15" S  
                  Long. 132° 18' 0" E

ELEVATION      Ground 2439.5'  
                  K.B. 2453'

Date Spudded: 24th. February, 1965.  
Date Drilling Stopped: 27th. March, 1965.  
Date Rig of: 28th. March, 1965.

Total Depth      Driller 4535'  
                          E. Log —

| Hole Size | Inches   | From    | To    |
|-----------|----------|---------|-------|
|           | 17 1/2"  | Surface | 106'  |
|           | 12 1/4"  | 106'    | 1019' |
|           | 8 3/4"   | 1019'   | 4520' |
|           | 7 13/16" | 4520'   | 4535' |

| Casing Size | Inches  | Wt.    | Gr.  | Depth | Cmt.      | Cmt'd to |
|-------------|---------|--------|------|-------|-----------|----------|
|             | 13 3/8" | 48 lb. | H-40 | 106'  | 90 sacks  | Surface  |
|             | 9 5/8"  | 36 lb. | J-55 | 1019' | 120 sacks | —        |

| Cement Plugs | From    | To   | Sacks |
|--------------|---------|------|-------|
| 1            | 2920    | 3120 | 80    |
| 2            | 950     | 1050 | 40    |
| 3            | Surface | 50   | 25    |

Well Head Fitting: Welded steel plate  
Drilled by: Oil Drilling and Exploration  
Logged by: Welox  
Drilling Method: Rotary - Air  
Cemented by: Oil Drilling and Exploration  
Mud Logging by: —  
Lithology by: R.L. Pemberton

### INDUCTION - ELECTRICAL LOG DATA

| RUN No                    | 1         | 2         |
|---------------------------|-----------|-----------|
| Date                      | 1.3.65    | 27.3.65   |
| First Reading             | 104'      | 1019'     |
| Last Reading              | 882'      | 4480'     |
| Interval Measure          | 882'      | 3462'     |
| Casing Schlumberger       | 104'      | 1019'     |
| Casing Driller            | 106'      | 1018'     |
| Depth Reached             | 881'      | 4485'     |
| Bottom Driller            | 1017'     | 4520'     |
| Mud Nature                | Air       | Air       |
| Density / Viscosity       |           |           |
| Mud Resistivity           |           |           |
| Mud Resistivity BHT       |           |           |
| pH / Fluid Loss cc/30 min |           |           |
| Origin of Sample          |           |           |
| Ref                       |           |           |
| Rmc                       |           |           |
| Bit Size                  | 12 1/4"   | 8 3/4"    |
| Casing Size               |           |           |
| Dr Rig Time               |           |           |
| Track No                  |           |           |
| Recorded by               | T.J. Wall | T.J. Wall |
| Witness                   |           |           |

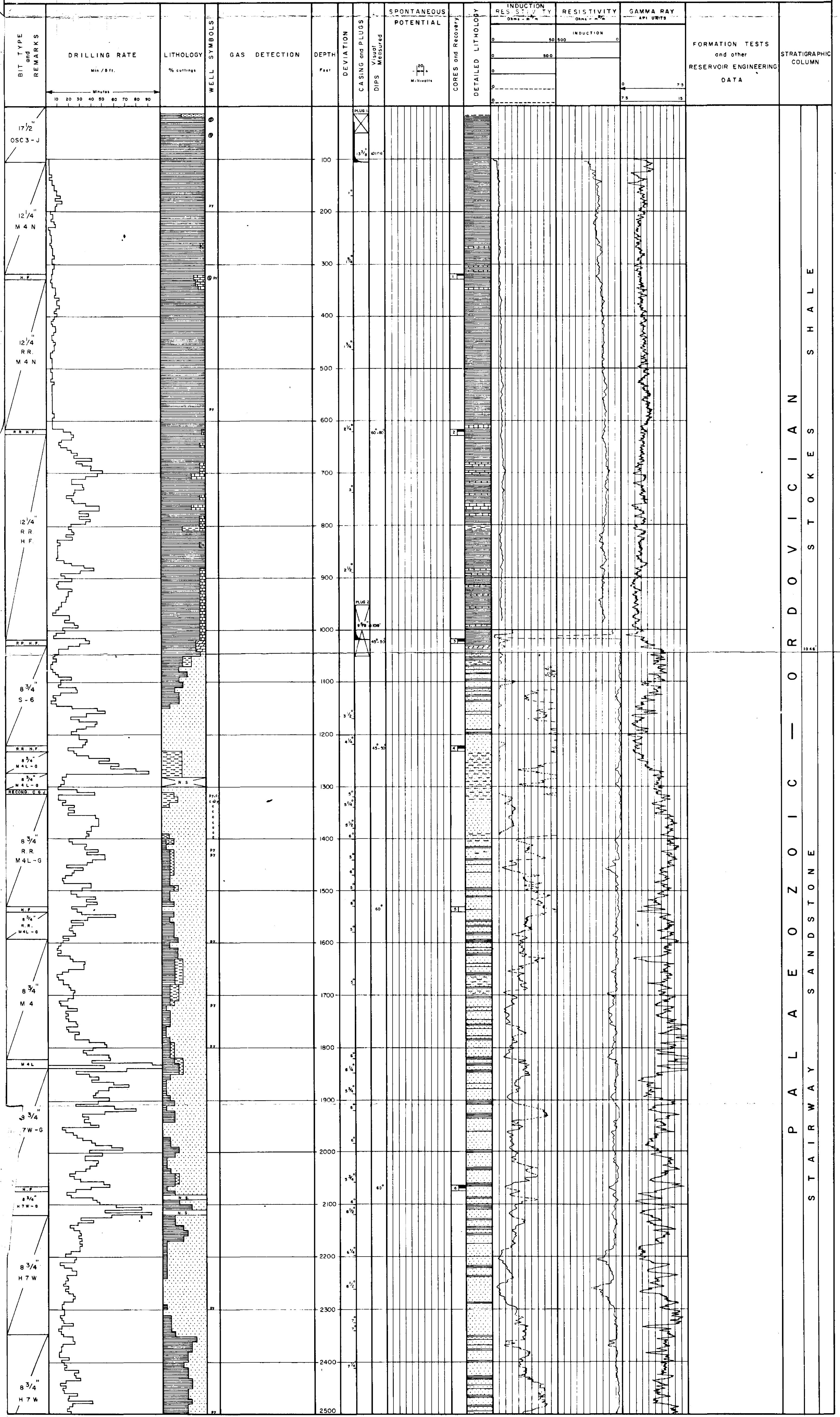
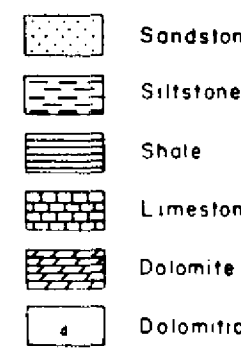
### RADIOMETRIC LOG DATA

| Type of Log                       | Gamma Ray |
|-----------------------------------|-----------|
| Run No                            | 1         |
| Date                              | 27-3-65   |
| Total Depth Drilled               | 4520      |
| Top Logged Interval               | 100       |
| Bottom of Logged Interval         | 3075      |
| Type of Fluid in Hole             | AIR       |
| Fluid Level                       | —         |
| Maximum Recorded Temperature      | —         |
| Neutron Source, Strength and Type | —         |
| Source Spacing - in               | —         |
| Length of Measuring Device        | —         |
| O.D. of Instrument - in           | —         |
| Time Constant - Secs.             | —         |
| Logging Speed - Ft/hr             | —         |
| Statistical Variation             | —         |
| Sensitivity Reference             | —         |
| Recorded by                       | —         |

### OTHER LOGS

Microlog  
Sonic

### LITHOLOGIC REFERENCE



# COMPOSITE WELL LOG GOSSE'S BLUFF No. 1 2500' - 4535' Sheet 2 of 2

| BIT TYPE and REMARKS                | DRILLING RATE<br>Min./5 ft. | LITHOLOGY<br>% cuttings | WELL SYMBOLS | GAS DETECTION | DEPTH<br>Feet | DEVIATION<br>Casing and Plugs<br>Vertical<br>DIPS MEASURED | SPONTANEOUS<br>POTENTIAL<br>mV/m | CORES and Recovery | DETAILED LITHOLOGY | INDUCTION RESISTIVITY<br>Ohm-ft/m |          | RESISTIVITY<br>Ohm-ft/m | GAMMA RAY<br>API UNITS | FORMATION TESTS<br>and other<br>RESERVOIR ENGINEERING<br>DATA | STRATIGRAPHIC<br>COLUMN |
|-------------------------------------|-----------------------------|-------------------------|--------------|---------------|---------------|--|----------------------------------|--------------------|--------------------|-----------------------------------|----------|-------------------------|------------------------|---|-------------------------|
|                                     |                             |                         |              |               |               |  |                                  |                    |                    | 0-500                             | 500-1000 |                         |                        |   |                         |
| H.F.                                |                             |                         |              |               |               |  |                                  |                    |                    |                                   |          |                         |                        |   |                         |
| 8 3/4" H 7 W                        |                             |                         |              |               | 2600          | 80°  |                                  |                    |                    |                                   |          |                         |                        |   |                         |
| 8 3/4" M 4 L-G                      |                             |                         |              |               | 2700          |  |                                  |                    |                    |                                   |          |                         |                        |   |                         |
|                                     |                             |                         |              |               | 2800          |  |                                  |                    |                    |                                   |          |                         |                        |   |                         |
| 8 3/4" M 5                          |                             |                         |              |               | 2900          |  |                                  |                    |                    |                                   |          |                         |                        |   |                         |
|                                     |                             |                         |              |               | 3000          |  |                                  |                    |                    |                                   |          |                         |                        |   |                         |
| R.R. H.F.<br>R.R. H.F.<br>R.R. H.F. |                             |                         |              |               | 3100          | 70°<br>70°   |                                  |                    |                    |                                   |          |                         |                        |   |                         |
|                                     |                             |                         |              |               | 3200          |  |                                  |                    |                    |                                   |          |                         |                        |   |                         |
| 8 3/4" Recond. R.R. CG-J            |                             |                         |              |               | 3300          |  |                                  |                    |                    |                                   |          |                         |                        |   |                         |
|                                     |                             |                         |              |               | 3400          |  |                                  |                    |                    |                                   |          |                         |                        |   |                         |
|                                     |                             |                         |              |               | 3500          |  |                                  |                    |                    |                                   |          |                         |                        |   |                         |
| 8 3/4" H B J                        |                             |                         |              |               | 3600          |  |                                  |                    |                    |                                   |          |                         |                        |   |                         |
|                                     |                             |                         |              |               | 3700          |  |                                  |                    |                    |                                   |          |                         |                        |   |                         |
| R.R. H.F.                           |                             |                         |              |               | 3900          | 80°  |                                  |                    |                    |                                   |          |                         |                        |   |                         |
|                                     |                             |                         |              |               | 4000          |  |                                  |                    |                    |                                   |          |                         |                        |   |                         |
| 8 3/4" Recond. C G J                |                             |                         |              |               | 4100          |  |                                  |                    |                    |                                   |          |                         |                        |   |                         |
|                                     |                             |                         |              |               | 4200          |  |                                  |                    |                    |                                   |          |                         |                        |   |                         |
|                                     |                             |                         |              |               | 4300          |  |                                  |                    |                    |                                   |          |                         |                        |   |                         |
| 8 3/4" Recond. Y C G J              |                             |                         |              |               | 4400          |  |                                  |                    |                    |                                   |          |                         |                        |   |                         |
|                                     |                             |                         |              |               | 4500          |  |                                  |                    |                    |                                   |          |                         |                        |   |                         |
| R.R. *                              |                             |                         |              |               | 4535          | 0°   |                                  |                    |                    |                                   |          |                         |                        |   |                         |
|                                     |                             |                         |              |               | 4600          |  |                                  |                    |                    |                                   |          |                         |                        |   |                         |
|                                     |                             |                         |              |               | 4700          |  |                                  |                    |                    |                                   |          |                         |                        |   |                         |
|                                     |                             |                         |              |               | 4800          |  |                                  |                    |                    |                                   |          |                         |                        |   |                         |
|                                     |                             |                         |              |               | 4900          |  |                                  |                    |                    |                                   |          |                         |                        |   |                         |
|                                     |                             |                         |              |               | 5000          |  |                                  |                    |                    |                                   |          |                         |                        |   |                         |
|                                     |                             |                         |              |               | 5100          |  |                                  |                    |                    |                                   |          |                         |                        |   |                         |
|                                     |                             |                         |              |               | 5200          |  |                                  |                    |                    |                                   |          |                         |                        |   |                         |
|                                     |                             |                         |              |               | 5300          |  |                                  |                    |                    |                                   |          |                         |                        |   |                         |
|                                     |                             |                         |              |               | 5400          |  |                                  |                    |                    |                                   |          |                         |                        |   |                         |
|                                     |                             |                         |              |               | 5500          |  |                                  |                    |                    |                                   |          |                         |                        |   |                         |
|                                     |                             |                         |              |               | 5600          |  |                                  |                    |                    |                                   |          |                         |                        |   |                         |
|                                     |                             |                         |              |               | 5700          |  |                                  |                    |                    |                                   |          |                         |                        |   |                         |
|                                     |                             |                         |              |               | 5800          |  |                                  |                    |                    |                                   |          |                         |                        |   |                         |
|                                     |                             |                         |              |               | 5900          |  |                                  |                    |                    |                                   |          |                         |                        |   |                         |
|                                     |                             |                         |              |               | 6000          |  |                                  |                    |                    |                                   |          |                         |                        |   |                         |

P A L A E O Z O I C — O R D O V I C I A N  
S T A I R W A Y S A N D S T O N E