

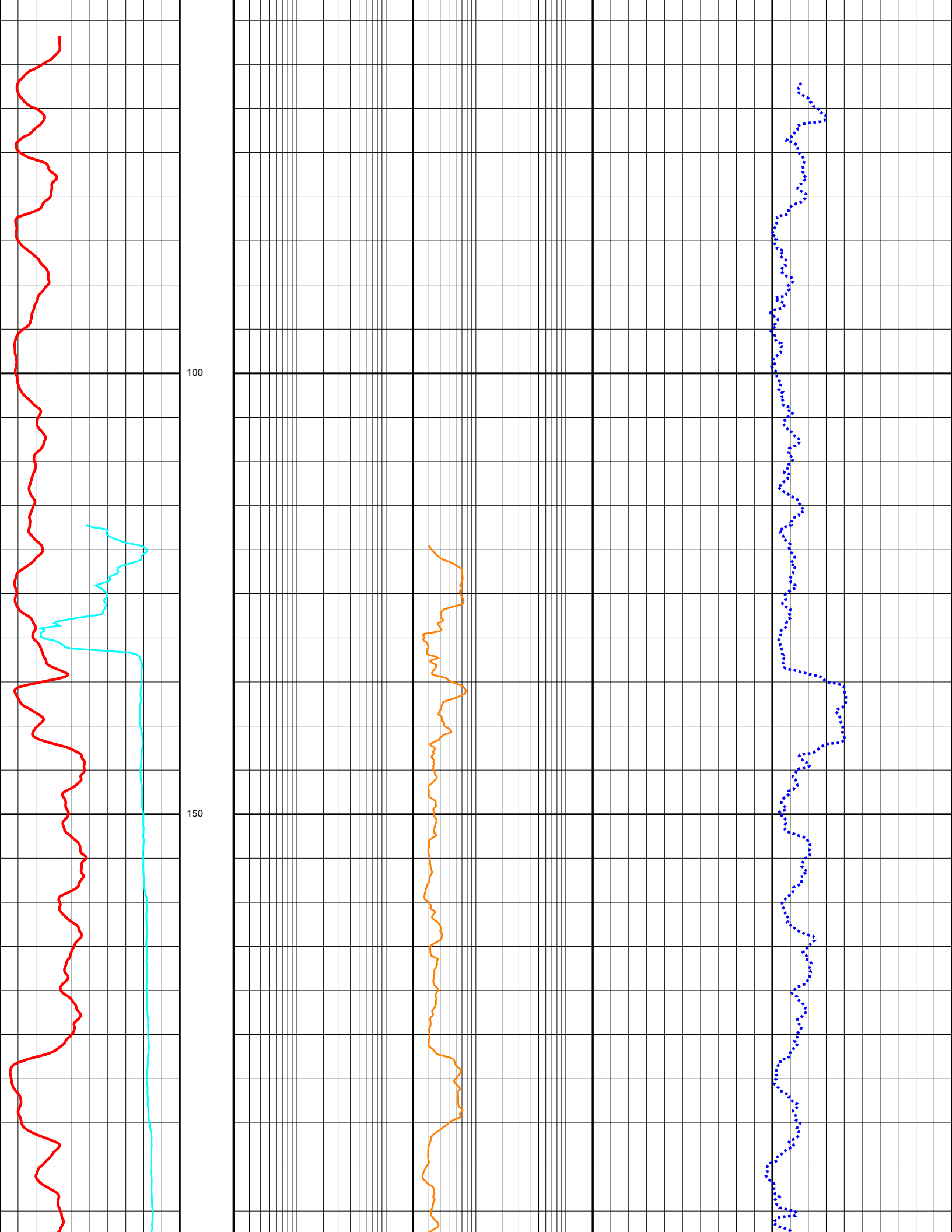
WATERHOUSE 1

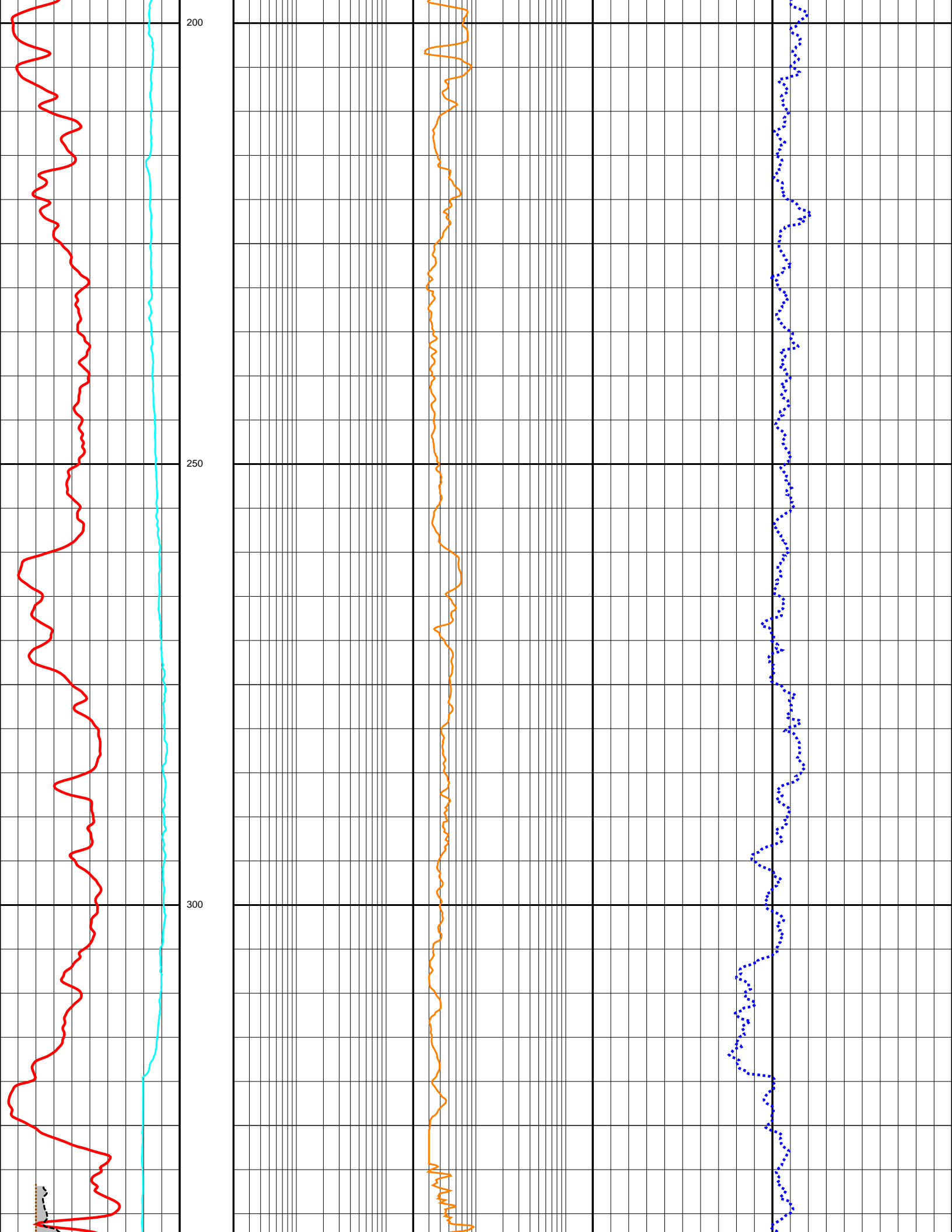
Composite Logs

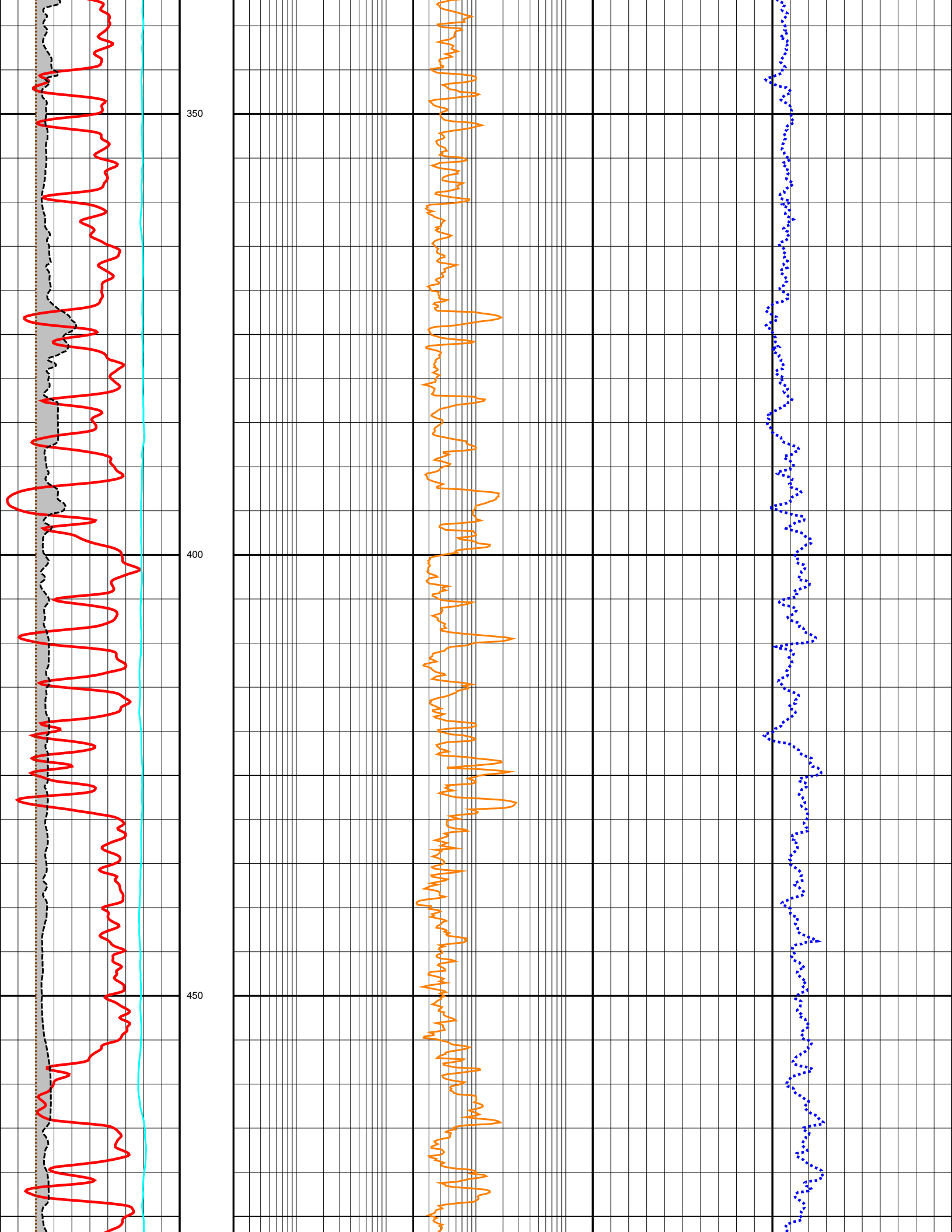
Company	CENTRALIA OIL PTY LTD
Well Name	WATERHOUSE 1
Field	WILDCAT
Country	AUSTRALIA
State	NORTHERN TERRITORY
Latitude	024 00' 36.000" S DMS
Longitude	133 18' 00.000" E DMS
Perm. Datum	G.L.
Elev. Log Zero (wrt EPD)	932.69 M
Log measured from	3060
Services	CBL, L, ML
Service company	SCHLUMBERGER
Number of runs	1
Date Plotted	Wednesday, 7 October 2009
Time Plotted	3:23:03 PM

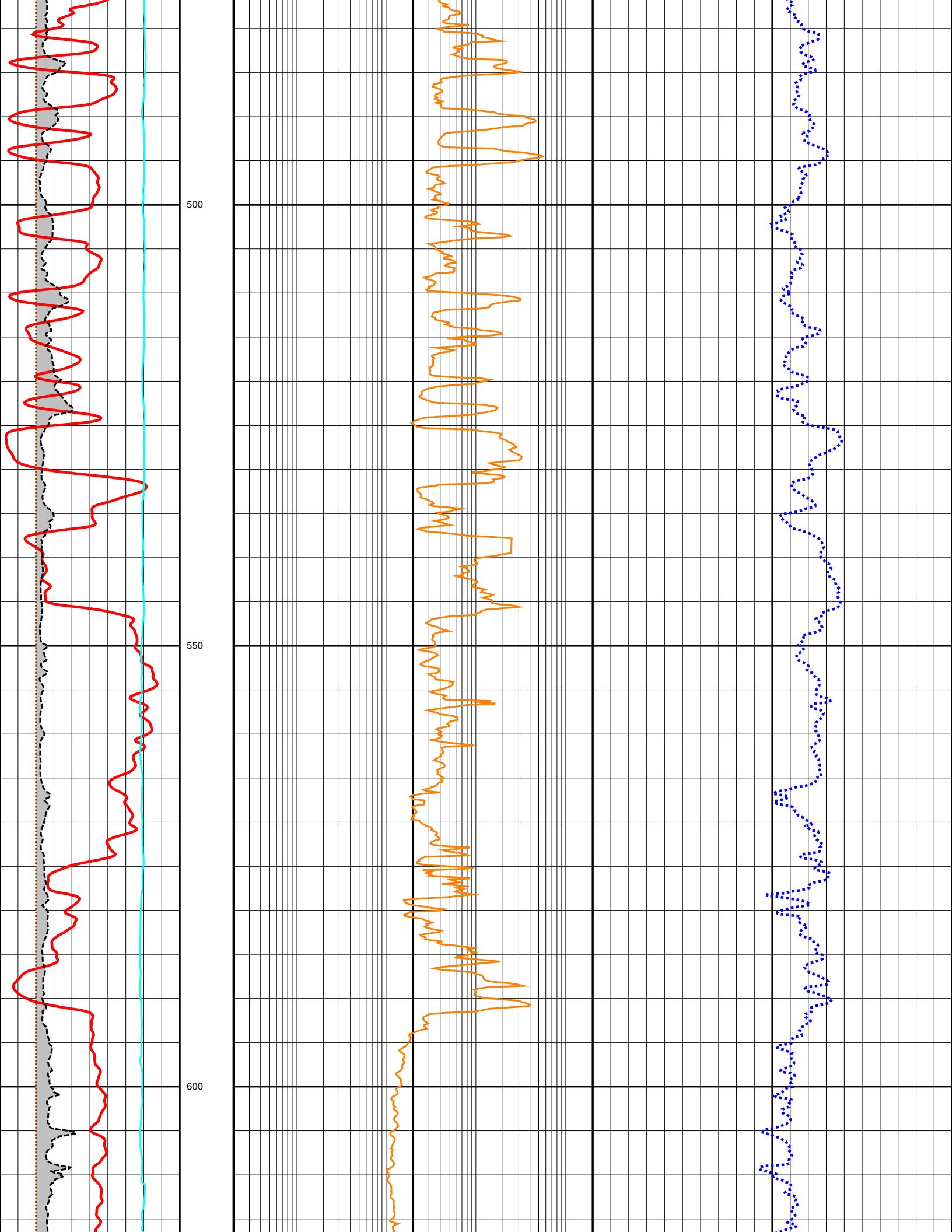
Run Information

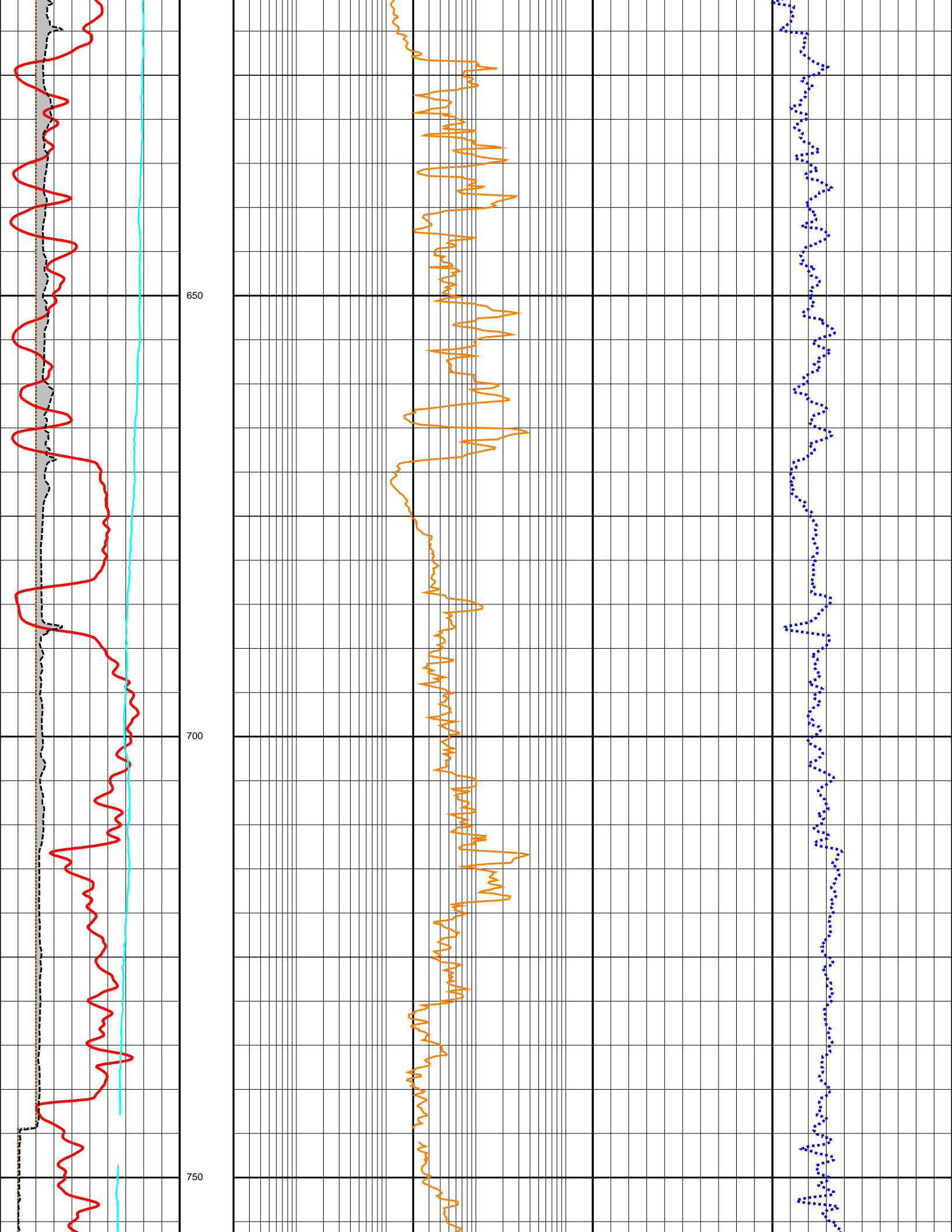
Run number	1	2			
Log date	08/03/1965	28/04/1965			
Bottom log interval	327.05 M	932.69 M			
Top log interval	6.10 M	327.36 M			
Casing-Driller	327.36 M	932.69 M			
Casing-Logger	327.36 M	932.69 M			
Casing Diameter		10.750 INCH			
Bit Size	12.500 INCH	8.000 INCH			
Hole Fluid type	WATER	WATER			
Mud Sample Source	BAILER	BAILER			
RM @ Surface	3.500 OHMM	3.500 OHMM			
Mud temp @ Surface	18.89 DEGC	18.89 DEGC			
RM @ Depth	0.000 OHMM	0.000 OHMM			

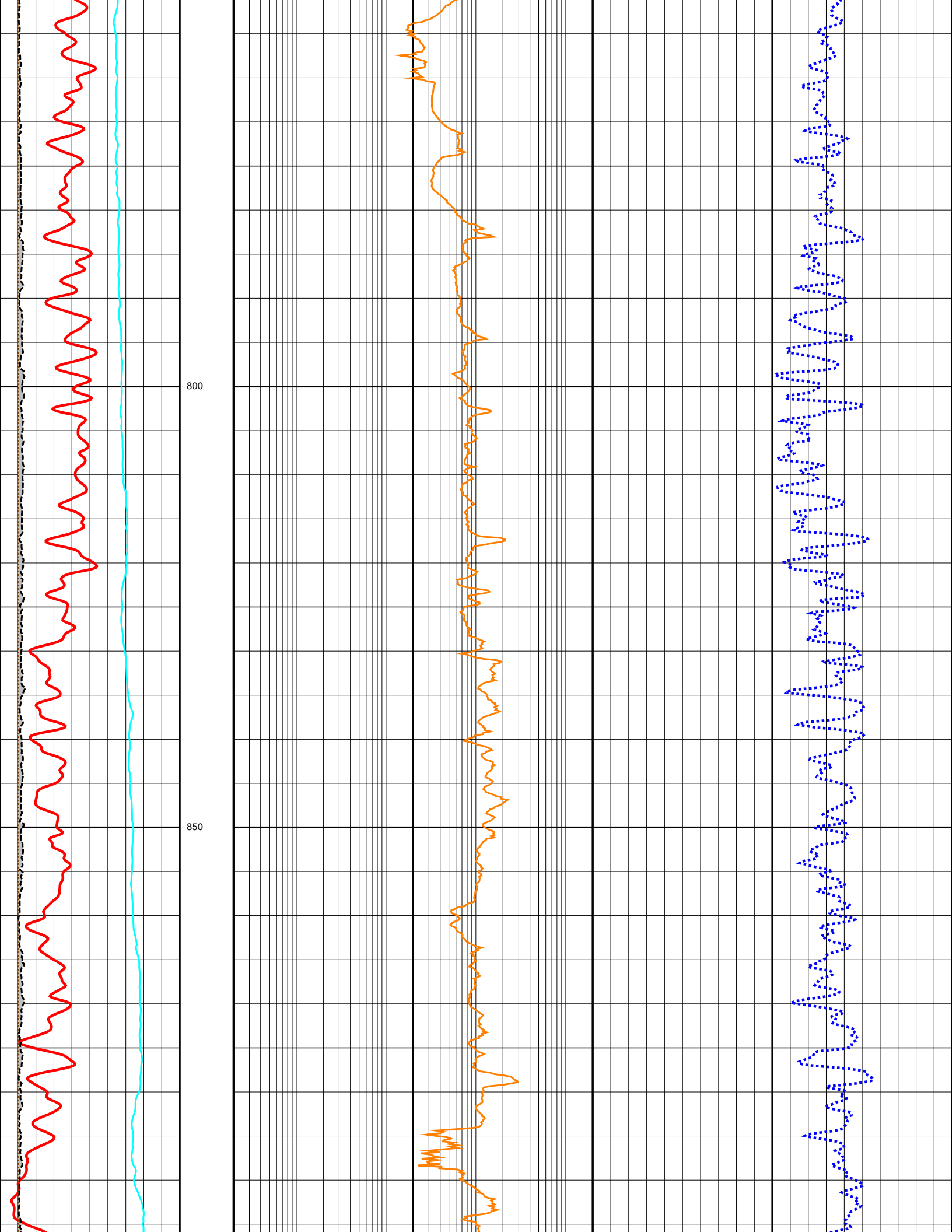


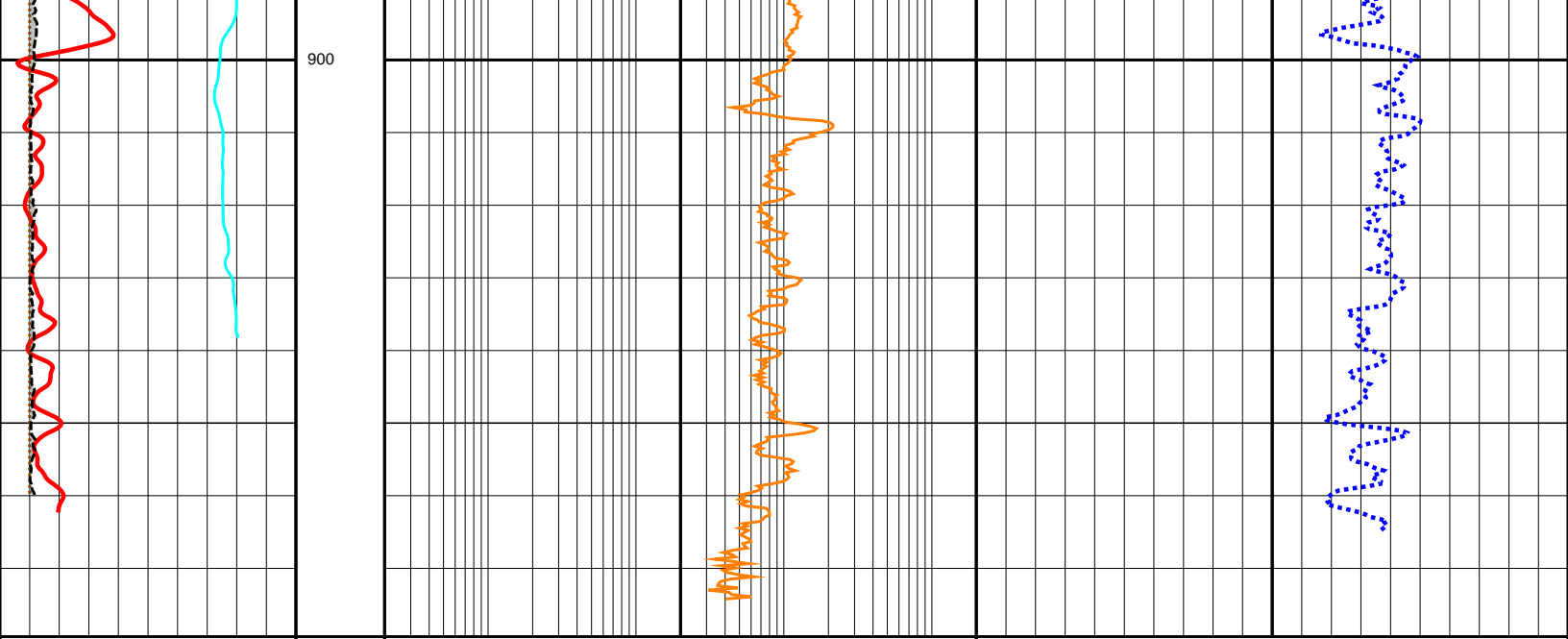












0.0	GR (API)	200.0	DEPTH	0.2	LL3 (OHMM)	2000.0	0.45	NPHI (V/V)	-0.15
6.0	BS (INCH)	26.0	M	0.2	LL7 (OHMM)	2000.0			
6.0	CALI (INCH)	26.0	1:500						
-80.0	SP (MV)	20.0							