

AUSTRALIAN AQUITAINE PETROLEUM

MOYLE No. 1

COMPOSITE WELL LOG

PERMIT OP 2	STATE NORTHERN TERRITORY	BASIN BONAPARTE GULF
FEDERAL MAP SD 52.11	WELL SITE GEOLOGIST F. BROPHY	WELL STATUS ABANDONED, DRY
LOG SCALE 2" = 100'	DATE SPUNDED 27-7-66 COMPLETED 11-8-66	

LOCATION LAT 14° 19' 10" LONG 129° 46' 31"	DEPTH 1767 ft. 538.56 m.
ELEVATION Z RT. 200.7'	Driller Schlum-berger
Z GROUND 185.7'	1763 ft. 537.34 m.

SIZE	FROM	TO	RUN	WT	GR	DEPTH	CMT.	CMT. TO
12 1/4	0	1027	1	9 3/4	36 lb/ft	J 55	1012	33480
8 3/4	1027	1767						Surface

FROM	TO	SACKS	TYPE	SIZE	FROM	TO	No/FT
1027	810	9300 lbs					
0	40	4600 lbs					

PERFORATIONS	PERFORATIONS

DATE	BIT	REMARKS	TYPE	SIZE	REMARKS	TYPE	SIZE	REMARKS

DATE	BIT	REMARKS	TYPE	SIZE	REMARKS	TYPE	SIZE	REMARKS

DATE	BIT	REMARKS	TYPE	SIZE	REMARKS	TYPE	SIZE	REMARKS

DATE	BIT	REMARKS	TYPE	SIZE	REMARKS	TYPE	SIZE	REMARKS

DATE	BIT	REMARKS	TYPE	SIZE	REMARKS	TYPE	SIZE	REMARKS

DATE	BIT	REMARKS	TYPE	SIZE	REMARKS	TYPE	SIZE	REMARKS

DATE	BIT	REMARKS	TYPE	SIZE	REMARKS	TYPE	SIZE	REMARKS

DATE	BIT	REMARKS	TYPE	SIZE	REMARKS	TYPE	SIZE	REMARKS

DATE	BIT	REMARKS	TYPE	SIZE	REMARKS	TYPE	SIZE	REMARKS

DATE	BIT	REMARKS	TYPE	SIZE	REMARKS	TYPE	SIZE	REMARKS

DATE	BIT	REMARKS	TYPE	SIZE	REMARKS	TYPE	SIZE	REMARKS

DATE	BIT	REMARKS	TYPE	SIZE	REMARKS	TYPE	SIZE	REMARKS

DATE	BIT	REMARKS	TYPE	SIZE	REMARKS	TYPE	SIZE	REMARKS

DATE	BIT	REMARKS	TYPE	SIZE	REMARKS	TYPE	SIZE	REMARKS

DATE	BIT	REMARKS	TYPE	SIZE	REMARKS	TYPE	SIZE	REMARKS

DATE	BIT	REMARKS	TYPE	SIZE	REMARKS	TYPE	SIZE	REMARKS

DATE	BIT	REMARKS	TYPE	SIZE	REMARKS	TYPE	SIZE	REMARKS

DATE	BIT	REMARKS	TYPE	SIZE	REMARKS	TYPE	SIZE	REMARKS

DATE	BIT	REMARKS	TYPE	SIZE	REMARKS	TYPE	SIZE	REMARKS

DATE	BIT	REMARKS	TYPE	SIZE	REMARKS	TYPE	SIZE	REMARKS

DATE	BIT	REMARKS	TYPE	SIZE	REMARKS	TYPE	SIZE	REMARKS

DATE	BIT	REMARKS	TYPE	SIZE	REMARKS	TYPE	SIZE	REMARKS

DATE	BIT	REMARKS	TYPE	SIZE	REMARKS	TYPE	SIZE	REMARKS

WELL SYMBOLS

- Gas show slight
- Gas show strong
- Oil show slight
- Oil show strong
- Oil and gas show
- Fluorescence
- Circulation loss partial & sg. mud
- Circulation loss complete & sg. mud
- Flow into well & sg. mud
- Blowout
- Core interval, number & recovery
- Sidewall core
- Formation test interval & no
- Casing
- Perforated interval
- Plugged interval

DRILLING

NB New Bit
RRB Rerun Bit
DB Diamond Bit
TB Turbo Drill
CB Core Bit
DCB Diamond Core Bit

DS Directional Survey
W Weight on Bit in Tons
rpm Revolutions per minute
CO Circulation Out
NR No Return

WELL HEAD FITTINGS:- SHAFER, HYDRIL
DRILLED BY:- FORASOL
LOGGED BY:- SCHLUMBERGER
DRILLING METHOD:- ROTARY
CEMENTED BY:- FORASOL
MUD LOGGING BY:- GEOSERVICES

L E G E N D L I T H O L O G Y

- Conglomerate
- Tillite with rounded and angular polyhedral elements
- Sandstone or quartz sandstone fine grained, conglomeric
- Sandstone or quartz sandstone coarse grained, microconglomeratic
- Sandstone or quartz sandstone coarse grained
- Sandstone or quartz sandstone medium grained
- Sandstone or quartz sandstone fine grained
- Silicified sandstone
- Shaly sandstone
- Sandstone very fine grained, silty
- Siltstone, pure, sandy
- Silty shale
- Plastic clay or shale
- Limestone
- Dolomite
- Calcite streaks
- Gabbro
- Mica
- Glaucanite
- Pyrite
- Ferruginous material
- Feldspar
- Coal streaks and beds
- Marine fossils
- Microfauna
- Plant remains

TYPE OF SERVICE	INDUCTION	ELECTRICAL LOG	GAMMA RAY	SONIC LOG
RUN NUMBER	1	2	1	2
DATE	31-7-1966	12-8-1966	12-8-1966	31-7-1966
FIRST READING	1021	1762	1762	1016
LAST READING	48	1012	100	80
INTERVAL MEASURED	973	750	1662	946
CASING LOGGER	1012	1012	1012	1012
DEPTH REACHED	1022	1763	1763	1022
BOTTOM DRILLER	1027	1767	1767	1027

REMARKS

Log time was taken into account for the collection of cuttings, which therefore represent exact depths.

LOG DATUM

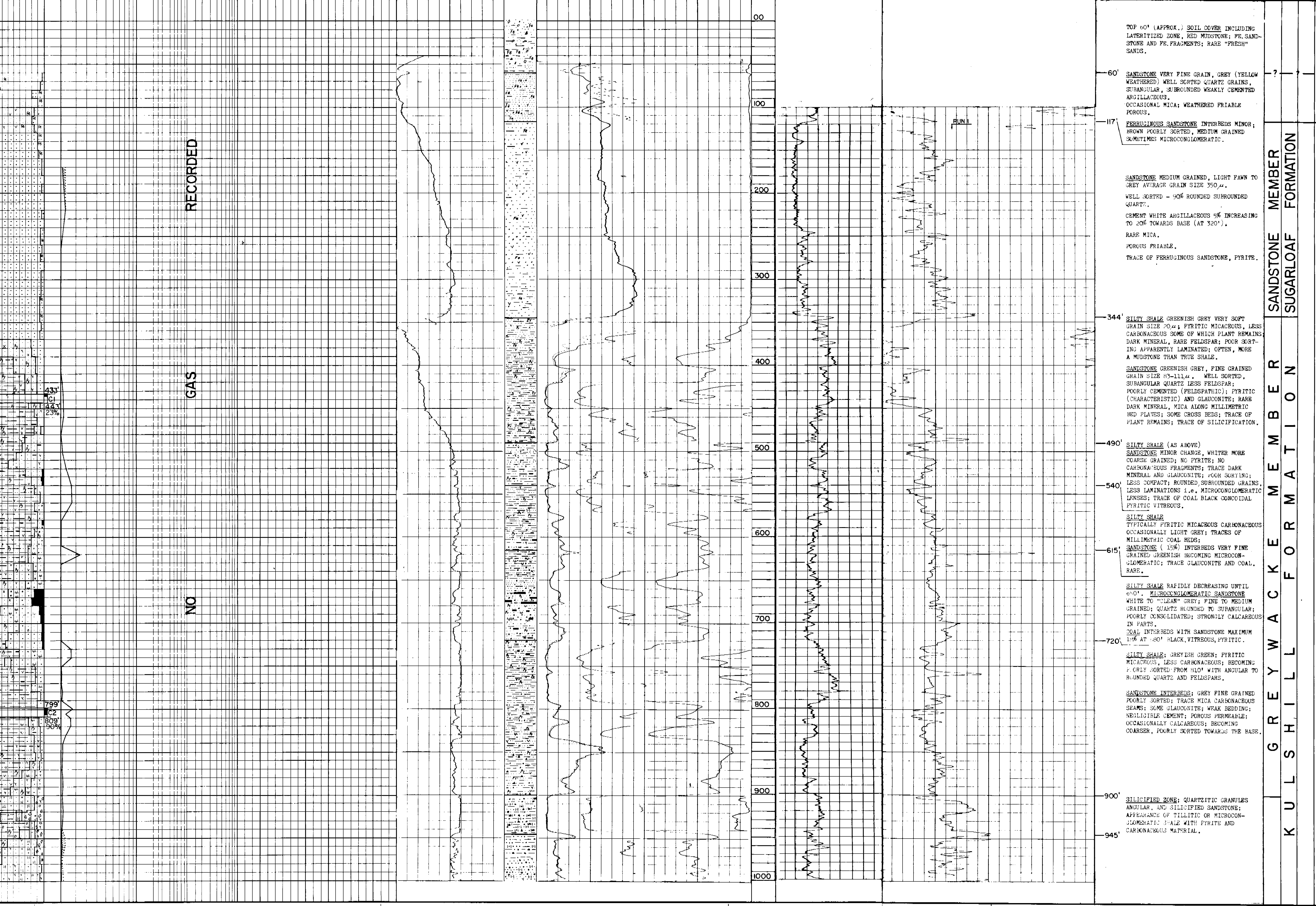
Permanent Datum GL. Elevation 185.7'
Logs measured from RT. 15' Above
Permanent Datum
Drilling measured from RT. 200.7'

ELECTRICAL LOGGING

Truck No. L 4523
Recorded by: J. Cleret
Witness: F. Brophy

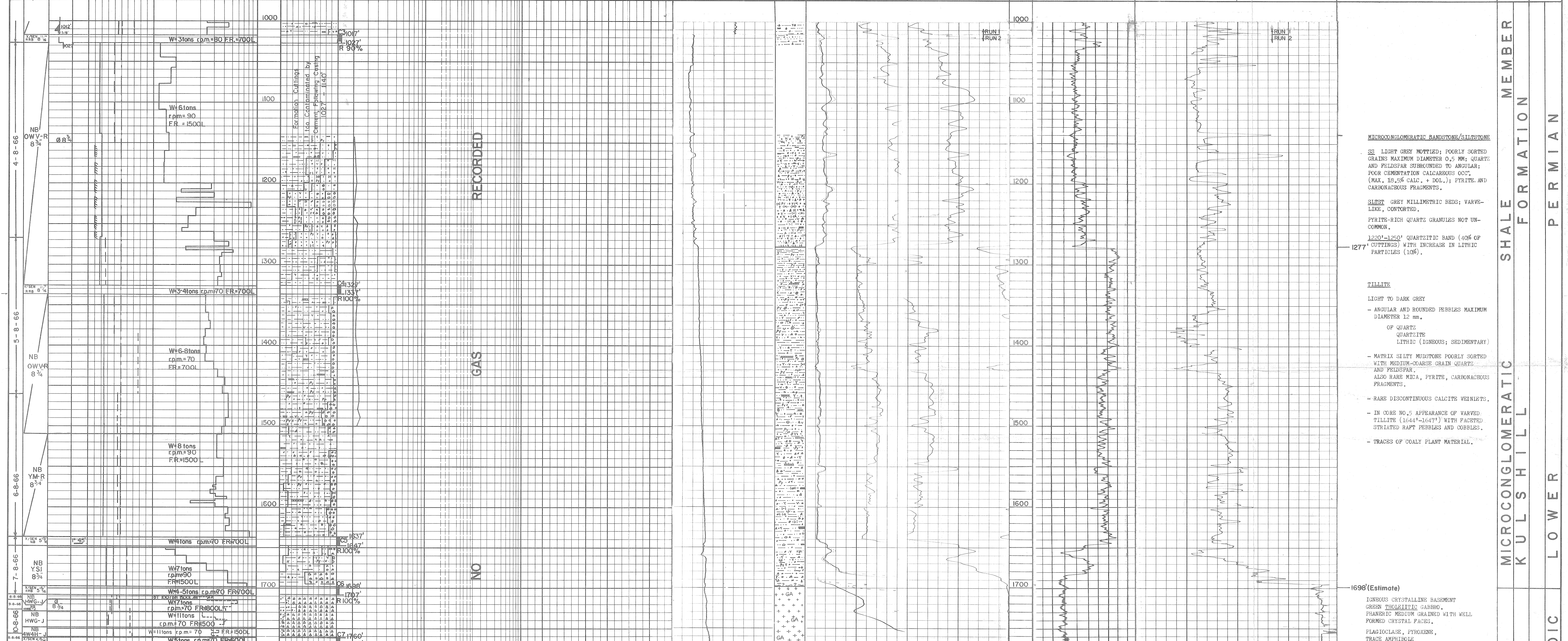
G E O L O G I C A L D A T A

DATE	BIT	REMARKS	TYPE	SIZE	REMARKS	TYPE	SIZE	REMARKS	DEPTH	CUTTINGS LOG	CUTTINGS ANALYSIS	HYDROCARBON OCCURENCES				SPONTANEOUS POTENTIAL	DETAILED LITHOLOGY	RESISTIVITY	CONDUCTIVITY	GAMMA RAY	INTERVAL TRANSIT TIME	LITHOLOGY, TESTS, REMARKS	STRATIGRAPHY
												IN MUD	IN CUTTINGS	IN CORES	IN CUTTINGS								



SANDSTONE MEMBER
SUGARLOAF FORMATION
GREYWACKE MEMBER
KULSHREY WACKE MEMBER
L O W E R P E R M I A N M E S O Z O I C

DATE	DRILLING DATA			DEPTH	CUTTINGS LOG	CUTTINGS ANALYSIS	HYDROCARBON OCCURENCES			SPONTANEOUS POTENTIAL	DETAILED LITHOLOGY	RESISTIVITY	CONDUCTIVITY	GAMMA RAY	INTERVAL TRANSIT TIME	LITHOLOGY, TESTS, REMARKS		STRATIGRAPHY						
	TYPE, SIZE	MUD	DRILLING RATE				IN MUD	IN CUTTINGS								IN CORES	MILLIVOLTS	OHMS - m/m	MILLI OHMS - m/m	APL Units	MICROSECOND	PER FOOT	FORMATION	AGE
								LOG	OIL															



MICROCONGLOMERATIC SANDSTONE/SILTSTONE
 SS LIGHT GREY MOTTLED; POORLY SORTED GRAINS MAXIMUM DIAMETER 0.5 MM; QUARTZ AND FELDSPAR SURROUNDED TO ANGULAR; POOR CEMENTATION CALCAREOUS OCC. (MAX. 18.5% CALC. + DOL.); PYRITE AND CARBONACEOUS FRAGMENTS.

SILTST GREY MILLIMETRIC BEDS; VARVE-LIKE, CONTORTED.
 PYRITE-RICH QUARTZ GRANULES NOT UNCOMMON.

1220'-1250' QUARTZITIC BAND (40% OF CUTTINGS) WITH INCREASE IN LITHIC PARTICLES (10%).

TILLITE
 LIGHT TO DARK GREY
 - ANGULAR AND ROUNDED PEBBLES MAXIMUM DIAMETER 12 mm.
 OF QUARTZ QUARTZITE LITHIC (IGNEOUS; SEDIMENTARY)
 - MATRIX SILTY MUDSTONE POORLY SORTED WITH MEDIUM-COARSE GRAIN QUARTZ AND FELDSPAR.
 ALSO RARE MICA, PYRITE, CARBONACEOUS FRAGMENTS.
 - RARE DISCONTINUOUS CALCITE VEINLETS.
 - IN CORE NO.5 APPEARANCE OF VARVED TILLITE (1644'-1647') WITH FACETED STRIATED RAFT PEBBLES AND COBBLES.
 - TRACES OF COALY PLANT MATERIAL.

1698'(Estimate)
 IGNEOUS CRYSTALLINE BASEMENT GREEN THOLEIITIC GABBRO. PHANERIC MEDIUM GRAINED WITH WELL FORMED CRYSTAL FACES.
 PLAGIOCLASE, PYROXENE, TRACE AMPHIBOLE QUARTZ APATITE, Fe ORE.