

# COMPOSITE WELL LOG POEPELS CORNER -1

ARCO Australia Limited

R.N.B. to ground level 22' (6.7 m)  
 Ground level elev. 131' (39.9 m) above msl  
 datum: R.N.B. - 53' (16.1 m) above msl  
 date spudded: August 21, 1984  
 date drilling stopped: September 18, 1984  
 date rig released: September 22, 1984  
 total depth: 8500' (2590.7 m)  
 drilled by: Richter Drilling Pty. Ltd.  
 rig: Rig No. 8  
 perforations: None

location: lat. 25° 47' 36" S  
 long 137° 57' 06" E  
 state: NORTHERN TERRITORY  
 tenement: OP-184

status: PLUGGED and ABANDONED

### resistivity log data

date	8/21/84	8/22/84	8/23/84	8/24/84	8/25/84
last reading	4494	8500			
interval measured	3156	3887			
casing schlumberger	728	4433			
depth reached	728	4434			
bottom driller	4485	8500			
type of tool	DL / MSFL	DL / MSFL			
fluid nature	SW	SW			
density @ 75°F	9.6 / 55	9.3 / 40			
PH water loss @ 230 min	10 / 2.5	9 / 2.2			
mod resistivity @ 13.4°F	0.188 @ 22°F	0.189 @ 22°F			
mod resistivity @ 64°F	0.080 @ 13.4°F	0.059 @ 22°F			
Rmf measured	0.057 @ 60°F	0.168 @ 60°F			
Rmf measured	0.176 @ 38°F	0.240 @ 22°F			
bit size	12 1/2"	8 1/2"			
recorded by	L. Kelly / J. Kelly	W. J. Kelly			
checked by	W. J. Kelly	W. J. Kelly			

### casing

depth	weight	id	length	cement	comments
0	40	4.5	32	1	surface
13 3/8	54.5	4.55	728	709	surface
9 5/8	60	4.55	4334	498	2650'

### cement plugs

from	to	size	from	to
7492'	7292'	77x	24'	26'
7083'	6883'	69x	12 1/2'	43'
4354'	4254'	165x	12 1/2'	765'
BP	4340'	25x	8 1/2'	4540'
RP	surface	5x	8 15/32'	8490'

### hole size

size	from	to
24"	26'	63'
12 1/2"	43'	740'
12 1/2"	765'	4340'
8 1/2"	4540'	8490'
8 15/32"	8490'	8500'

### gamma ray log data

date	8/30/84	9/18/84			
last reading	4494	8474			
interval measured	30	2472			
depth reached	4494	6020			
bottom driller	4340	8500			
fluid nature	SW	SW			
max recorded temp	15.8°F	22.7°F			
sonde type	SIC	SIC			

### other logs

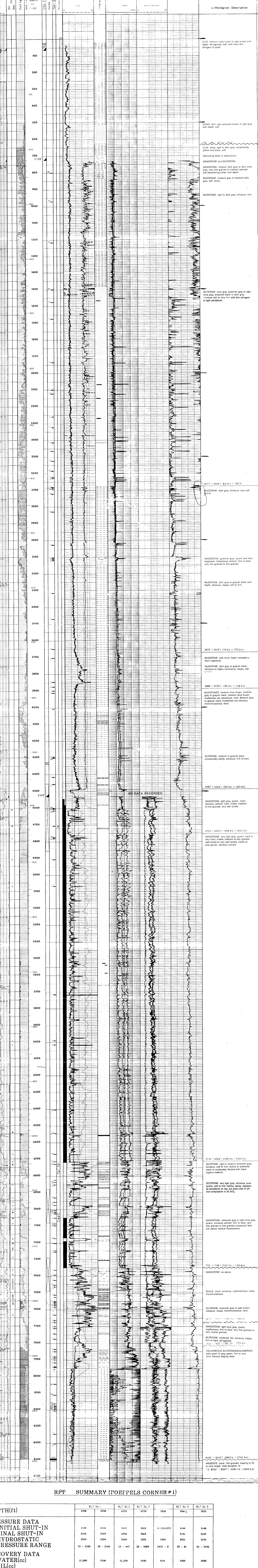
type	interval	runs
ZLS	8500' - 728'	2
DOT	8500' - 728'	2
CST	8404' - 800'	2
LUL/ON/FEF	8500' - 728'	1
RFT	7052' - 4708'	1
WST	8490' - 100'	1
NET	3300' - 2400'	1

### well symbols

- show of oil, poor, fair, good
- show of gas
- ⊙ drill stem tests
- ⊖ perforated interval
- ⊕ core No. & interval
- sidewall core
- ⊠ plugged interval
- ⊡ casing seat
- ⊞ casing interval
- ⊞ gap in samples
- ⊞ formation interval test

### lithology reference

- conglomerate
- sandstone
- conglomeratic sandstone
- streaks of sand
- shaly sandstone
- siltstone
- limestone
- dolomite
- dolomitic limestone
- calcareous limestone
- quagwaind limestone
- anhedral limestone
- shale
- anhedral shale
- calcareous shale
- silty shale
- clay or claystone
- calcareous siltstone
- salt
- anhydrite
- bentonite
- coal
- glauconite
- arkose
- pyrite
- gypsum
- calcareous
- dolomitic
- chert
- basic igneous rock
- quartzite
- tuff and/or volcanic ash
- metamorphic rock
- granite or acidic igneous rock



### RPT SUMMARY (POEPELS CORNER #1)

DEPTH(ft)	WLT No 1	WLT No 2	WLT No 3	WLT No 4	WLT No 5
4708	4708	6729	6730	7018	7015
2166	2166	3010	3024	3144	3148
2166	2166	2998	3023	3141	3145
2264	2264	3268	3283	3405	3415
57 - 2166	58 - 2166	15 - 447	28 - 3009	3405 - 0	38 - 81
21,000	3500	21,200	3500	N/A	3000
.684 at 66°F	1.06 at 68°F	.167 at 70°F	.155 at 70°F	.159 at 66°F	.157 at 66°F
SAND	SAND	SAND	SAND	N/A	SAND
21	21	16	17		18
50 at 200°F	50 at 200°F	20 at 225°F	20 at 225°F	10 at 230°F	10 at 230°F
1.25 at 200°F	1.25 at 200°F	1.1 at 225°F	1.1 at 225°F	.35 at 230°F	.35 at 230°F
2000 ppm	2000 ppm	1800 ppm	1800 ppm	6000 ppm	6000 ppm
.189 at 64°F	.189 at 64°F	.189 at 64°F	.189 at 64°F	.189 at 64°F	.189 at 64°F
40,000 ppm	40,000 ppm	49,000 ppm	40,000 ppm	40,000 ppm	40,000 ppm
0 Call	1 Call	0 Call	1 Call	N/A	0 Call
1 x 0.02"	1 x 0.02"	1 x 0.020"	1 x 0.02"		1 x 0.02"
NO	NO	NO	NO		NO